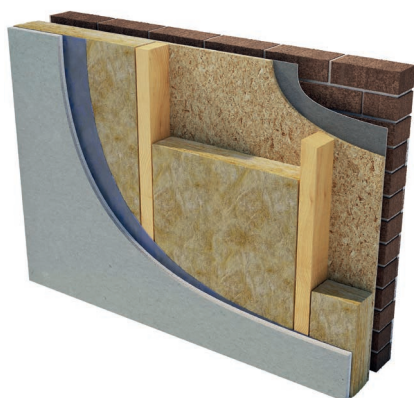
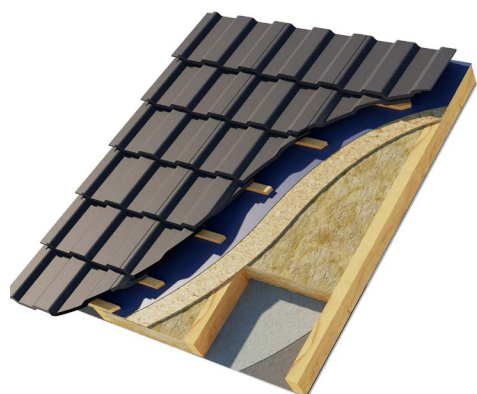


Timber & Rafter Roll 35.

November 2023 | Data Sheet



Description.

Superglass Timber & Rafter Roll 35 is a non-combustible glass mineral wool insulation roll. The flexible roll is cut at 2x570mm widths to allow friction fitting between common stud/rafter spacings minimising gaps at joints and reducing on-site cutting.

Application.

Superglass Timber & Rafter Roll 35 is designed to provide thermal insulation for external timber frame walls, warm pitched roofs, and suspended timber floors.

Performance.

Thermal Conductivity:

Declared thermal conductivity (lambda (λ) value) of 0.035W/mK.

Fire Classification:

Deemed non-combustible with a fire classification of Euroclass A1 (the highest possible rating) when tested to BS EN 13501-1 Reaction to Fire.



Typical applications:

External timber frame walls and warm pitched roofs.



Thermal
Insulation



Non-
combustible



Easy to
Install



Recycled
Content

Intelligent Environments
Superglass

superglass.co.uk

Timber & Rafter Roll 35.

Technical Characteristics.

Product Specification.

Thickness (mm)	Length (m)	Width (mm)	Pack Area (m ²)	Packs per pallet	Thermal Conductivity (W/mK)	Thermal Resistance (m ² K/W)	Product Code
90	5.00	2x570	5.700	24	0.035	2.55	3138
140	4.50	2x570	5.130	24	0.035	4.00	3137

Please note that all dimensions are nominal.

Additional Information.

Vapour Resistivity

The product has a nominal vapour resistivity of 5 MNs/gm.

Environmental credentials.

- Manufactured in accordance with ISO 14001 - Environmental Management Systems (EMS). Certificate number: EMS 646508
- Contains no ozone-depleting substances or greenhouse gases. For more information, please refer to the Environmental Product Declaration (EPD).
- Made from up to 84% recycled glass.
- Generic BRE Green Guide Rating of A+.

Standards and Approvals.

Manufactured in accordance with:

- BS EN 13162:2012(+A1:2015) Thermal insulation products for buildings - Factory made mineral wool (MW) products.
- BS EN 13172: 2012 Thermal insulation products - Evaluation of conformity.
- BS EN ISO 9001 - Quality Management Systems (QMS). Certificate number: FM 02264.

Certifications.

- UKCA certified to BS EN 13162:2012+A1:2015. Certificate number: 0086 CPR 469699.
- CE marked to BS EN 13162:2012+A1:2015. Certificate number: 0751-CPR-399.0-01.

A copy of the product Declaration of Performance (DoP) can be downloaded from the Superglass website.

Handling & Storage.

Due to its physical characteristics, Timber & Rafter Roll 35 is quick and easy to handle and install.

The product is supplied compression packed in polythene to provide short term protection only. For long term protection, the product must be stored indoors, or under a waterproof covering and off the ground to protect from weather damage. The product should not be left permanently exposed to the elements.

All Superglass products are non-hygroscopic, will not rot, degrade, or sustain vermin and will not encourage the growth of mould, bacteria, or fungi.



Intelligent Environments
Superglass

Superglass Insulation Limited. Thistle Industrial Estate, Kerse Road, Stirling, Scotland FK7 7QQ

Technical

Hotline: 0808 1645 134

Email: technical.stirling@etexgroup.com

Customer Services

Tel: 01786 451170

Email: customerservice.stirling@etexgroup.com

Social

www.facebook.com/superglassinsulationuk

www.linkedin.com/company/superglassuk/

www.twitter.com/Superglass_UK

All rights are reserved, including those of photomechanical reproduction and storage in electronic media. Commercial use of the processes and work activities presented in this document is not permitted. Extreme caution was observed when putting together the information, texts and illustrations in this document. Nevertheless, errors cannot quite be ruled out. The publisher and editors cannot assume legal responsibility or any liability whatever for incorrect information and the consequences thereof. The publisher and editors will be grateful for improvement suggestions and details of errors pointed out.

REF: TRR3501