



# CUPA 18

---

*Non-carbonated slate formed by tectonic compression.  
Dark grey slate with thin laminations and a smooth surface.*



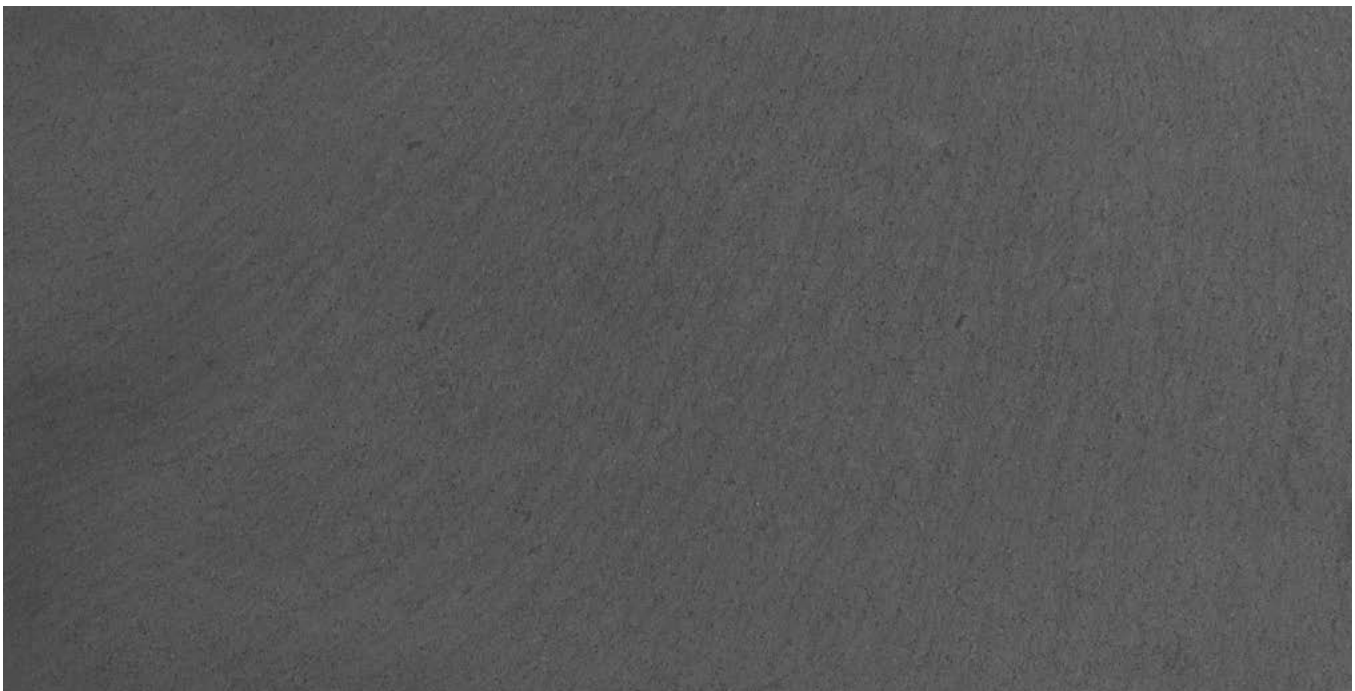
Quarry La Campa. Folgoso del Caurel (Lugo) Spain.



Operating since 1972.



Sizes: 20x20 - 60x45 cm  
Thickness: 3.5 - 5 - 6 mm



## Formats



Rectangular



Squared



Half Moon



Schuppen



Fischchuppen



90° Sawn

## Selections

R EXCELLENCE

H

NATURAL

## Technical specifications

ABSORPTION	CARBONATE NON CARBONATED	MOR CHARACTERISTIC	SO <sub>2</sub> EXPOSURE TEST	THERMAL CYCLE TEST	FREEZE THAW TEST
0,16% Code : W1 (< 0,4%)	0,23% Complies (<1,5%)	Longitudinal 59,8 MPA Transverse 58,1 MPA	S1	T1	Fullfil < 0,6%

## International certifications



European Standard: EN 12326 | Belgian Specifications: ATG H962