



# RMI ESSENTIALS

QUALITY PRODUCTS ALWAYS IN STOCK



**HIGH QUALITY PRODUCTS AVAILABLE NOW  
AND ALWAYS IN STOCK**

**RED BANK**

# RMI ESSENTIALS

QUALITY PRODUCTS ALWAYS IN STOCK

## THE ESSENTIAL RANGE OF HIGH QUALITY RED BANK PRODUCTS AVAILABLE NOW AND ALWAYS IN STOCK.

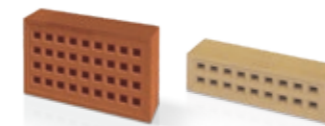
Whatever the architectural style, our master craftspeople at Red Bank manufacture all the clayware essentials you need to ensure you meet the needs of your customers. Our portfolio of Red Bank RMI Essentials is one of the most comprehensive in the UK and all manufactured in accordance with BS EN 13502: 2002.



CHIMNEY POTS PAGE 4



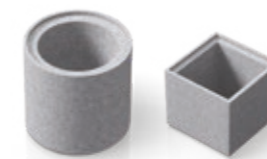
RIDGE TILES PAGE 4



AIR BRICKS PAGE 5



CAVITY WALL BRIDGING DUCTS PAGE 5



FLUE SYSTEM COMPONENTS PAGE 6-9



ACCESSORIES PAGE 8-9

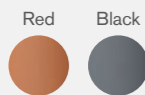
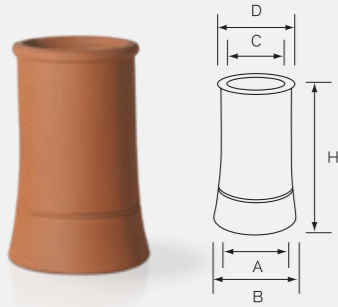
**TO ORDER CALL RED BANK SALES - 01530 273737 >**

## CHIMNEY POTS

**LIST NO. 1**  
Roll Top Chimney Pot

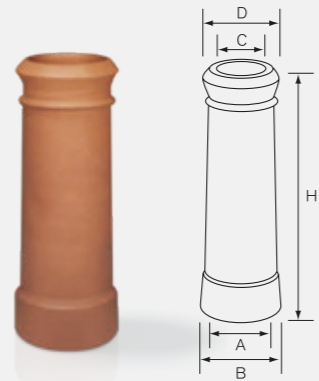
| Height<br>H | Base dia |     | Top dia |     |
|-------------|----------|-----|---------|-----|
|             | A        | B   | C       | D   |
| 300         | 250      | 280 | 200     | 275 |
| 450, 600    | 250      | 280 | 200     | 275 |

300mm high available in Red & Black.  
450 & 600mm high available in Red only.



**LIST NO. 4**  
Traditional Cannon Head Pot

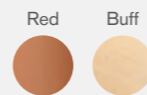
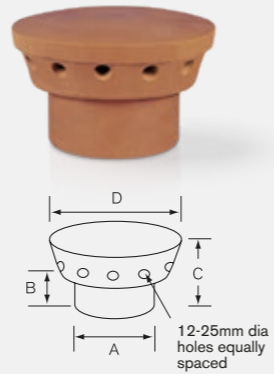
| Height<br>H | Base dia |     | Top dia |     |
|-------------|----------|-----|---------|-----|
|             | A        | B   | C       | D   |
| 300         | 250      | 280 | 200     | 280 |
| 450         | 250      | 280 | 200     | 280 |



**LIST NO. 120**  
Flue Ventilator\*

| Spigot ext. dia<br>A | Spigot Height<br>B | Overall Height<br>C | Hood Width<br>D |
|----------------------|--------------------|---------------------|-----------------|
| 190                  | 65                 | 175                 | 275             |

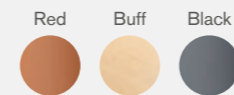
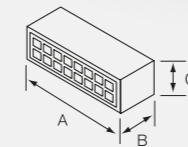
\*For redundant flues only.



## AIR BRICKS

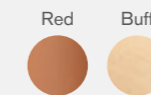
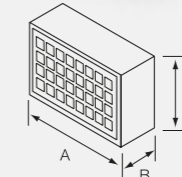
**LIST NO. 350**  
Square Hole Air Brick

| Length<br>A | Width<br>B | Height<br>C | Free air space<br>(mm <sup>2</sup> ) (kg) |
|-------------|------------|-------------|---|
| 215         | 50         | 65          | 1290                                      |



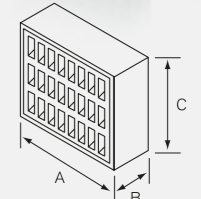
**LIST NO. 351**  
Square Hole Air Brick

| Length<br>A | Width<br>B | Height<br>C | Free air space<br>(mm <sup>2</sup> ) (kg) |
|-------------|------------|-------------|---|
| 215         | 50         | 140         | 2900                                      |



**LIST NO. 374**  
Rectangular Hole Slotted Air Brick

| Length<br>A | Width<br>B | Height<br>C | Free air space<br>(mm <sup>2</sup> ) (kg) |
|-------------|------------|-------------|---|
| 215         | 50         | 215         | 10250                                     |

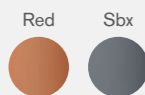
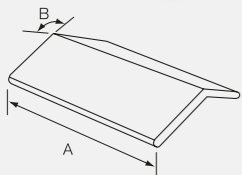


## RIDGE TILES

**LIST NO. 264**  
Plain Angle Ridge

| Length<br>A | Angle<br>B             |
|-------------|------------------------|
| 450         | 75°, 90, 105, 115, 125 |

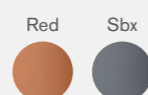
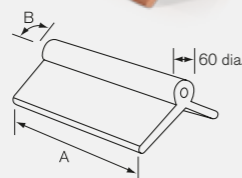
\*75° only available in Sbx.



**LIST NO. 284**  
Roll Top Ridge

| Length<br>A | Angle<br>B |
|-------------|------------|
| 450         | 90, 115    |

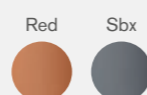
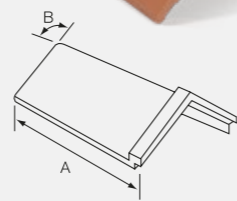
90° available in Red. 115° available in Sbx.



**LIST NO. 285**  
Capped Angle Ridge (One nail hole)

| Length<br>A | Angle<br>B         |
|-------------|--------------------|
| 450         | 90, 105, 115, 125* |

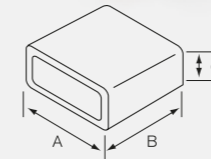
\*125° only available in Sbx.



## CAVITY WALL BRIDGING DUCTS

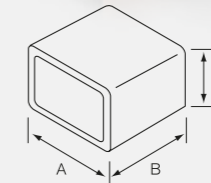
**LIST NO. 400**  
Horizontal CWBD 200 - Red

| Length<br>A | Width<br>B | Height<br>C | Weight<br>(kg) |
|-------------|------------|-------------|----------------|
| 215         | 200        | 65          | 3.9            |



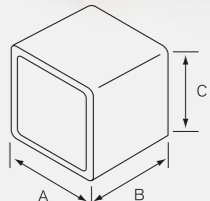
**LIST NO. 401**  
Horizontal CWBD 200 - Red

| Length<br>A | Width<br>B | Height<br>C | Weight<br>(kg) |
|-------------|------------|-------------|----------------|
| 215         | 200        | 140         | 5.1            |



**LIST NO. 402**  
Horizontal CWBD 200 - Red

| Length<br>A | Width<br>B | Height<br>C | Weight<br>(kg) |
|-------------|------------|-------------|----------------|
| 215         | 200        | 215         | 7.5            |

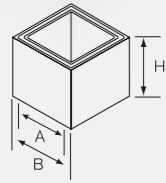


# FLUE SYSTEM COMPONENTS

**LIST NO. 829 RM1**  
200mm Square Rebated Flue 225mm

| Base A | Base B | Height H | Weight (kg) |
|--------|--------|----------|-------------|
| 200    | 250    | 225      | 8.85        |

Wall thickness 25mm

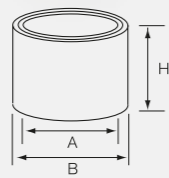


Other RM1 components such as bends and throat units are not included in this brochure. Please contact Red Bank Sales for further information.

**LIST NO. 829 RM6**  
225mm Dia Rebated Flue 225mm High

| Base A | Base B | Height H | Weight (kg) |
|--------|--------|----------|-------------|
| 225    | 275    | 225      | 7.45        |

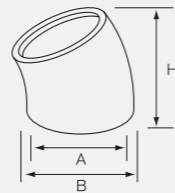
Wall thickness 25mm



**LIST NO. 829 RM91**  
225mm Dia Rebated Flue Bend 22.5°

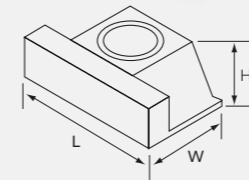
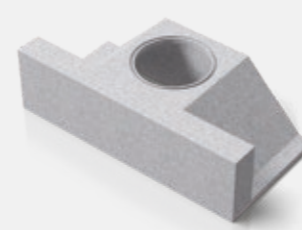
| Base A | Base B | Height H | Weight (kg) |
|--------|--------|----------|-------------|
| 225    | 275    | -        | 4.55        |

Offset Angle 22.5°



**LIST NO. 829 RM11**  
800mm Fyrelintel 225mm Dia Flue

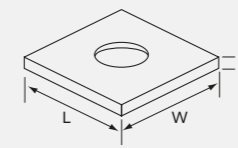
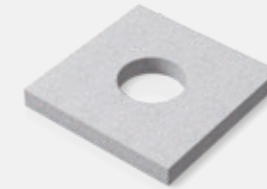
| Length L | Width W | Height H | Weight (kg) |
|----------|---------|----------|-------------|
| 800      | 405     | 222      | 54.45       |



**LIST NO. 829 RM78**  
Raft Lintel Starter Block 175mm Dia

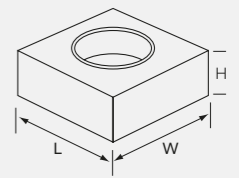
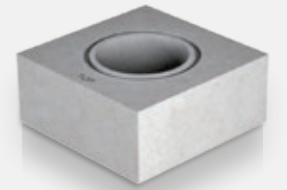
| Length L | Width W | Height H | Weight (kg) |
|----------|---------|----------|-------------|
| 550      | 550     | 65       | 33.15       |

Interior hole dia 175mm



**LIST NO. 829 RM85**  
Starter Unit for 175mm Dia Flue

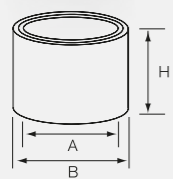
| Length L | Width W | Height H | Weight (kg) |
|----------|---------|----------|-------------|
| 330      | 330     | 140      | 23.5        |



**LIST NO. 829 RM75**  
175mm Internal Dia Rebated Flue Liner

| Base A | Base B | Height H | Weight (kg) |
|--------|--------|----------|-------------|
| 175    | 225    | 225      | 7.65        |

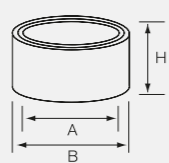
Wall thickness 30mm



**LIST NO. 829 RM76**  
175mm Internal Dia Rebated Flue Liner

| Base A | Base B | Height H | Weight (kg) |
|--------|--------|----------|-------------|
| 175    | 225    | 150      | 5.45        |

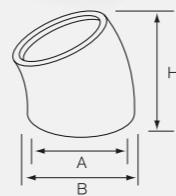
Wall thickness 30mm



**LIST NO. 829 RM77**  
175mm Dia Rebated Flue Bend 22.5°

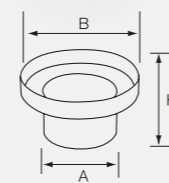
| Base A | Base B | Height H | Weight (kg) |
|--------|--------|----------|-------------|
| 175    | 225    | -        | 4.45        |

Wall thickness 30mm | Offset Angle 22.5°



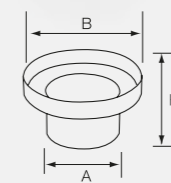
**LIST NO. 829 RM86**  
S/S Adapter for 175mm Dia Flue

| Base A | Top B | Height H | Weight (kg) |
|--------|-------|----------|-------------|
| 172    | 240   | 134      | 0.65        |



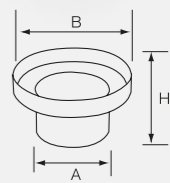
**LIST NO. 829 RM87**  
S/S Adapter for 150mm Dia Flue

| Base A | Top B | Height H | Weight (kg) |
|--------|-------|----------|-------------|
| 150    | 240   | 134      | 0.65        |



**LIST NO. 829 RM90**  
S/S Adapter for 125mm Dia Flue

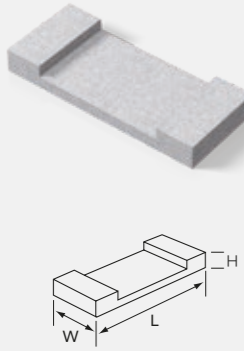
| Base A | Top B | Height H | Weight (kg) |
|--------|-------|----------|-------------|
| 125    | 240   | 134      | 0.65        |



## FLUE SYSTEM COMPONENTS

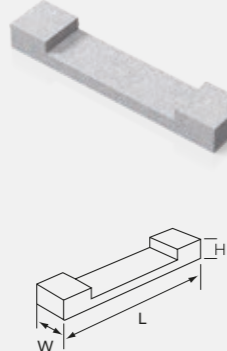
### LIST NO. 829 RM79 Raft Lintel Filler Block

| Length<br>L | Width<br>W | Height<br>H | Weight<br>(kg) |
|-------------|------------|-------------|----------------|
| 550         | 230        | 65          | 10.15          |



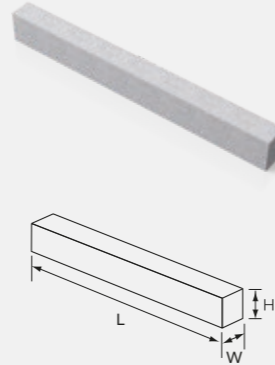
### LIST NO. 829 RM89 Raft Lintel Filler Block

| Length<br>L | Width<br>W | Height<br>H | Weight<br>(kg) |
|-------------|------------|-------------|----------------|
| 550         | 110        | 65          | 4.85           |



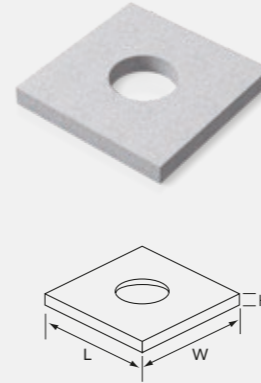
### LIST NO. 829 RM80 Raft Support Lintel

| Length<br>L | Width<br>W | Height<br>H | Weight<br>(kg) |
|-------------|------------|-------------|----------------|
| 1500        | 100        | 140         | 54.5           |



### LIST NO. 829 RM98 150mm Int dia Raft Lintel Starter Block

| Length<br>L | Width<br>W | Height<br>H | Weight<br>(kg) |
|-------------|------------|-------------|----------------|
| 550         | 550        | 65          | 34             |



## ACCESSORIES

### LIST NO. 843 RF28 Fireproof Mortar Cartridge

| Weight<br>(kg) | Only used with flue sizes<br>up to 300mm |
|----------------|--|
| 0.6            |  |



### LIST NO. 846 RF32 Tube Rediflow Smoke Pellets

| Weight<br>(kg) | Quantity           |
|----------------|--------------------|
| 0.1            | (6 x 13gm pellets) |



### LIST NO. 599 Insulating Backfill 20kg Bag

| Weight<br>(kg) | Coverage (m3)/bag |
|----------------|-------------------|
| 21.7           | 0.05              |



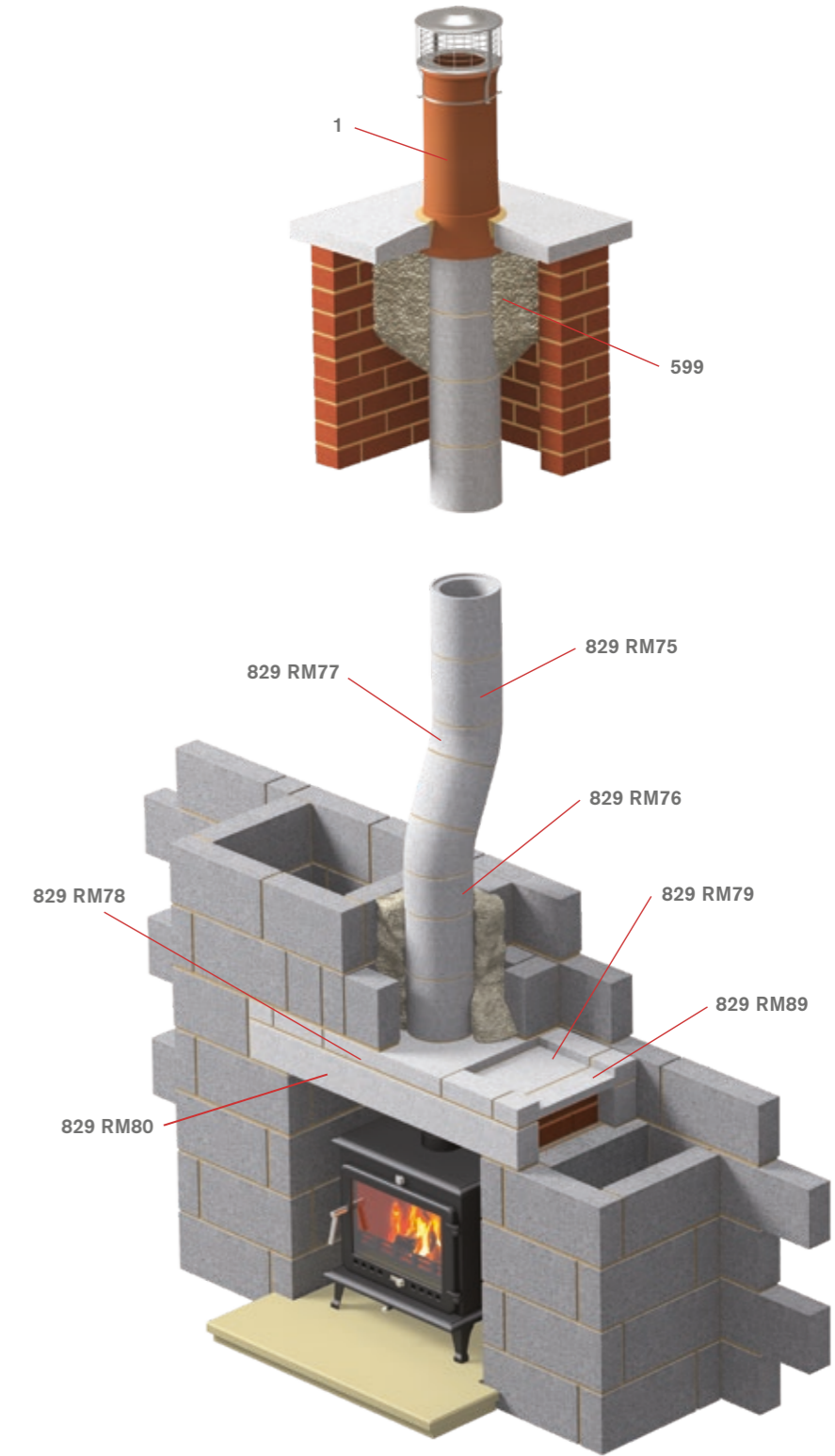
## CHECKLIST PACK

### LIST NO. 999 Notice Plate and Checklist Pack

| Weight<br>(kg) |
|----------------|
| 0.15           |



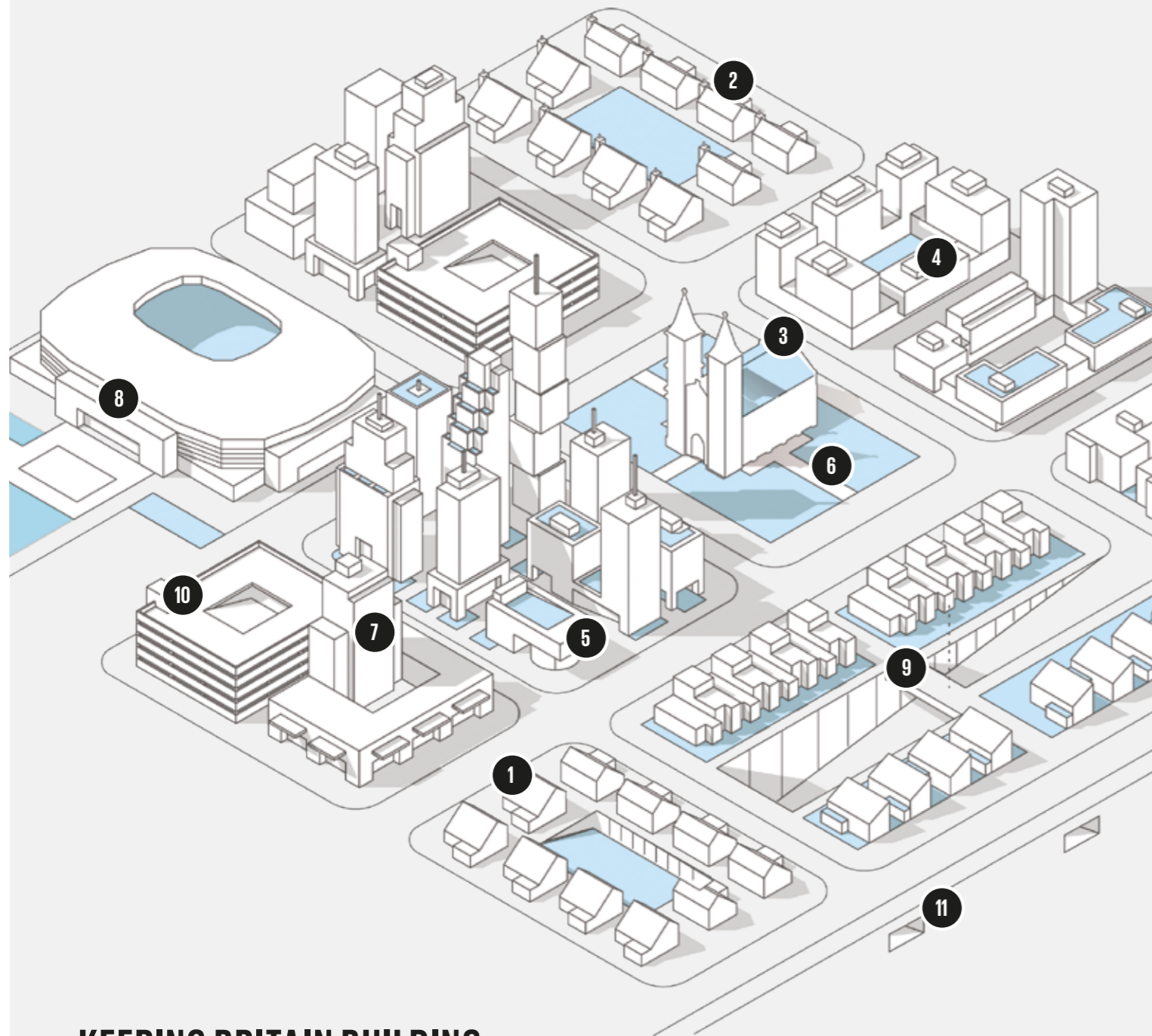
## TYPICAL FLUE SYSTEM



Typical construction of a 175mm internal diameter flue system

# THE COMPLETE FORTERRA RANGE

Our extensive product range covers all your construction requirements, from initial ground work through to finished build.



**KEEPING BRITAIN BUILDING**

## 1. BRICKS AND BLOCKS

LONDON BRICK  
ECOSTOCK  
BUTTERLEY  
THERMALITE  
CONBLOC



## 2. CHIMNEY AND FLUE SYSTEMS

RED BANK



## 3. RIDGE TILES AND FINIALS

RED BANK



## 4. AIR BRICKS AND CAVITY WALL BRIDGING DUCTS

RED BANK



## 5. SPECIAL SHAPED BRICKS

GRADLEY



## 6. PERMEABLE PAVING SYSTEMS

FORMPAVE



## 7. WALLING AND CLADDING SYSTEMS

SUREBRICK  
QUICKWALL



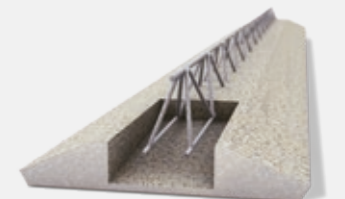
## 8. PRECAST CONCRETE

JETFLOOR  
BEAM & BLOCK  
HOLLOWCORE



## 9. PRECAST CONCRETE

OMNIA BRIDGE DECK



## 10. PRECAST CONCRETE

STAIRS AND LANDINGS



## 11. PRECAST CONCRETE

BOX CULVERTS



**FOR FURTHER INFORMATION  
VISIT FORTERRA.CO.UK**

Forterra is a leading manufacturer of a diverse range of clay and concrete building products, used extensively within the construction sector, and employs over 1,800 people across 17 manufacturing facilities in the UK.

It is the second largest brick and aircrete block manufacturer in the country, and the only producer of the iconic London Brick. Other trusted brands from Forterra include Thermalite, Conbloc, Ecostock, Butterley, Cradley, Red Bank, Bison Precast and Formpave.

**forterra.co.uk**

**Forterra Building Products Ltd**

5 Grange Park Court  
Roman Way  
Northampton  
NN4 5EA

01604 707600

**forterra.co.uk**



**RED BANK**



**forterra.co.uk**