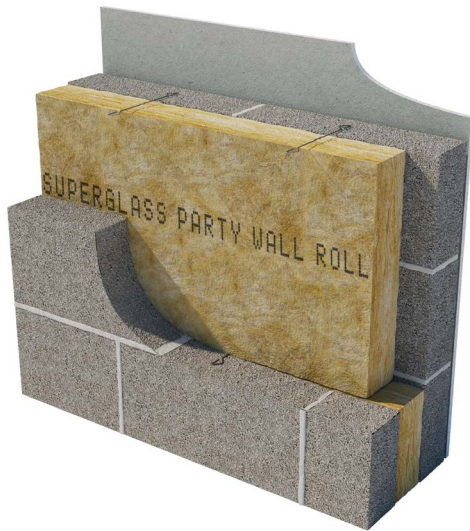


# Party Wall Roll.

November 2023 | Data Sheet



## Description.

Superglass Party Wall Roll is a non-combustible glass mineral wool insulation roll. The flexible roll is cut at 3x455mm widths to fit between standard wall ties spacings and to allow easy installation and minimum on-site cutting and waste.

## Application.

Superglass Party Wall Roll is designed to provide thermal and acoustic insulation within masonry party/separating walls.

Superglass Party Wall Roll may be used as a component in several Robust Details Solutions including proprietary systems E-WM-22, E-WM-23 & E-WM-27. It may also be used in party wall systems which require on-site pre-completion. The product can be used as part of a full fill solution to achieve a zero effective U-value.

## Performance.

### Density:

Manufactured at a minimum density of 18kg/m<sup>3</sup>.

### Thermal Conductivity:

Declared thermal conductivity (lambda ( $\lambda$ ) value) of 0.036W/mK.

### Fire Classification:

Deemed non-combustible with a fire classification of Euroclass A1 (the highest possible rating) when tested to BS EN 13501-1 Reaction to Fire.



**Typical applications:**  
Masonry party/separating walls.



Acoustic  
Insulation



Thermal  
Insulation



Non-  
combustible



Easy to  
Install



Recycled  
Content

Intelligent Environments  
**Superglass**

superglass.co.uk

# Party Wall Roll.

## Technical Characteristics.

### Product Specification.

Thickness (mm)	Length (m)	Width (mm)	Pack Area (m <sup>2</sup> )	Packs per pallet	Thermal Conductivity (W/mK)	Thermal Resistance (m <sup>2</sup> K/W)	Product Code
75	7.70	3x455	10.511	24	0.036	2.05	5873
100	5.75	3x455	7.849	24	0.036	2.75	5872
125	4.50	3x455	6.143	24	0.036	3.45	5874
150	3.50	3x455	4.778	24	0.036	4.15	5869

Please note that all dimensions are nominal.

### Additional Information.

#### Vapour Resistivity

The product has a nominal vapour resistivity of 5 MNs/gm.

#### Environmental credentials.

- ISO 14001 - Environmental Management Systems (EMS) certified. Certificate number: EMS 646508
- Contains no ozone-depleting substances or greenhouse gases. For more information, please refer to the Environmental Product Declaration (EPD).
- Manufactured from up to 84% recycled glass.
- Generic BRE Green Guide Rating of A+.

#### Standards and Approvals.

Manufactured in accordance with:

- BS EN 13162:2012(+A1:2015) Thermal insulation products for buildings - Factory made mineral wool (MW) products.
- BS EN 13172: 2012 Thermal insulation products - Evaluation of conformity.
- BS EN ISO 9001 - Quality Management Systems (QMS). Certificate number: FM 02264.

#### Certifications.

- UKCA certified to BS EN 13162:2012+A1:2015. Certificate number: 0086 CPR 469699.
- CE marked to EN 13162:2012+A1:2015. Certificate number: 0751-CPR-399.0-01.

A copy of the product Declaration of Performance (DoP) can be downloaded from the Superglass website.

#### Handling & Storage.

Due to its physical characteristics, Party Wall Roll is quick and easy to handle and install.

The product is supplied compression packed in polythene to provide short term protection only. For long term protection, the product must be stored indoors, or under a waterproof covering and off the ground to protect from weather damage. The product should not be left permanently exposed to the elements.

All Superglass products are non-hygroscopic, will not rot, degrade, or sustain vermin and will not encourage the growth of mould, bacteria, or fungi.

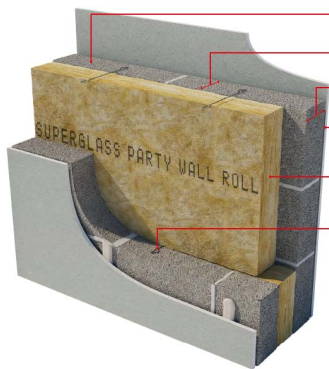
# Party Wall Roll.

## Technical Characteristics.

### Recommended solutions

**robust**details®

#### E-WM-22



**Block density:** 1350 to 1600 kg/m<sup>3</sup> or Plasmor Aglite Ultima 1050kg/m<sup>3</sup>

**Cavity width:** 100mm (min)

**Block thickness:** 100mm (min), each leaf

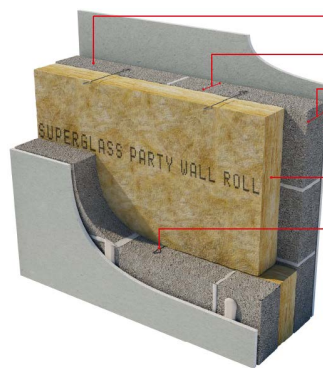
**Wall finish:** Gypsum based board mounted on dabs (nominal 10kg/m<sup>2</sup>)

**Insulation:** SUPERGLASS PARTY WALL ROLL

**Wall Ties:** Approved Document E 'Tie type A'

**External flanking wall:** Masonry (both leaves) with 50mm (min) cavity - fully filled or partially filled with Superglass Superwall Cavity Slabs or fully filled with Superglass Superwhite 34 Blown Cavity Insulation.

#### E-WM-23



**Block density:** 600 to 800kg/m<sup>3</sup>

**Cavity width:** 100mm (min)

**Block thickness:** 100mm (min), each leaf

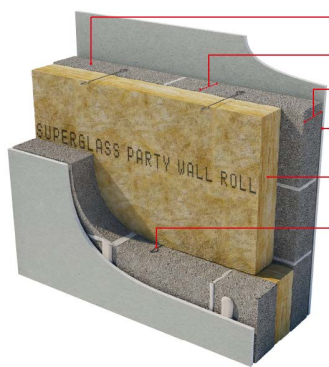
**Wall finish:** Gypsum based board mounted on dabs (nominal 8kg/m<sup>2</sup>)

**Insulation:** SUPERGLASS PARTY WALL ROLL

**Wall Ties:** Approved Document E 'Tie type A'. For thin joint, wall ties must be Ancon Building Products Staifix HRT4 or Clan PWT4 at no more than 2.5 ties per square metre

**External flanking wall:** Masonry (both leaves) with 50mm (min) cavity - fully filled or partially filled with Superglass Superwall Cavity Slabs or fully filled with Superglass Superwhite 34 Blown Cavity Insulation.

#### E-WM-27



**Blocks:** 1350 to 1600 kg/m<sup>3</sup>

**Cavity width:** 75mm (min)

**Block thickness:** 100mm (min), each leaf

**Wall finish:** Gypsum based board mounted on dabs (nominal 8kg/m<sup>2</sup>)

**Insulation:** SUPERGLASS PARTY WALL ROLL

**Wall Ties:** Approved Document E 'Tie type A'

**External flanking wall:** Masonry (both leaves) with 50mm (min) cavity - fully filled or partially filled with Superglass Superwall Cavity Slabs or fully filled with Superglass Superwhite 34 Blown Cavity Insulation.

The requirements of the Robust Details Handbook should be strictly followed.

# Party Wall Roll.

## Technical Characteristics.

Suitable for use in **robustdetails** masonry party walls

Superglass Party Wall Roll can be used in the following Robust Details specifications:

Robust Details Solutions - England, Wales & Northern Ireland				
Robust Detail	Minimum Cavity Width (mm)	Block Type & Density (kg/m <sup>3</sup> )	Parge Coat Required	Wall Finish
E-WM-1	75	Dense Aggregate - 1850 to 2300	No	Wet Plaster
E-WM-2	75	Lightweight Aggregate - 1350 to 1600	No	Wet Plaster
E-WM-3	75	Dense Aggregate - 1850 to 2300	Yes	Render and gypsum-based board on dabs
E-WM-4	75	Lightweight Aggregate - 1350 to 1600	Yes	Render and gypsum-based board on dabs
E-WM-5	75	Besblock 'Star Performer' - 1528	Yes	Render and gypsum-based board on dabs
E-WM-6	75	Aircrete - 600 to 800	Yes	Render and gypsum-based board on dabs
E-WM-10	75	Aircrete - Thin Joint System - 600 to 800	Yes	Render and gypsum-based board on dabs
E-WM-11	100	Lightweight Aggregate - 1350 to 1600	Yes	Render and gypsum-based board on dabs
E-WM-12	75	Plasmor 'Aglite Ultima' - 1050	Yes	Render and gypsum-based board on dabs
E-WM-13	75	Aircrete - Thin Joint Untied System - 600 to 800	Yes	Render and gypsum-based board on dabs
E-WM-16	100	Dense Aggregate - 1850 to 2300	Yes	Render and gypsum-based board on dabs
E-WM-18	100	Dense Aggregate - 1850 to 2300	No	Wet Plaster
E-WM-19	100	Dense or Lightweight Aggregate - 1350 to 1600 or 1850 to 2300	Yes	Render and gypsum-based board on dabs
E-WM-21	100	Lightweight Aggregate - 1350 to 1600	No	Wet Plaster
E-WM-22	100	Lightweight Aggregate - 1350 to 1600 or Plasmor 'Aglite Ultima' - 1050	No	Gypsum-based board on dabs
E-WM-23	100	Aircrete - Standard and Thin Joint - 600 to 800	No	Gypsum-based board on dabs
E-WM-25	100	Porotherm - Thin Joint - n/a	Yes	Ecoparge gypsum-based board on dabs
E-WM-26	100	Besblock 'Star Performer' - 1528	No	Gypsum-based board on dabs
E-WM-27	75	Lightweight Aggregate - 1350 to 1600	No	Gypsum-based board on dabs
E-WM-29	75	Porotherm - Thin Joint - n/a	Yes	Ecoparge gypsum-based board on dabs
E-WM-31	100	H+H Celcon Elements - thin joint - 575	No	Gypsum-based board on dabs
E-WM-34	100	Plasmor 'Aglite Ultima' - 1050	No	Gypsum-based board on dabs

The requirements of the Robust Details Handbook should be strictly followed.



Intelligent Environments  
**Superglass**

Superglass Insulation Limited. Thistle Industrial Estate, Kerse Road, Stirling, Scotland FK7 7QQ

### Technical

Hotline: 0808 1645 134

Email: [technical.stirling@etexgroup.com](mailto:technical.stirling@etexgroup.com)

### Customer Services

Tel: 01786 451170

Email: [customerservice.stirling@etexgroup.com](mailto:customerservice.stirling@etexgroup.com)

### Social

[www.facebook.com/superglassinsulationuk](https://www.facebook.com/superglassinsulationuk)

[www.linkedin.com/company/superglassuk/](https://www.linkedin.com/company/superglassuk/)

[www.twitter.com/Superglass\\_UK](https://www.twitter.com/Superglass_UK)

All rights are reserved, including those of photomechanical reproduction and storage in electronic media. Commercial use of the processes and work activities presented in this document is not permitted. Extreme caution was observed when putting together the information, texts and illustrations in this document. Nevertheless, errors cannot quite be ruled out. The publisher and editors cannot assume legal responsibility or any liability whatever for incorrect information and the consequences thereof. The publisher and editors will be grateful for improvement suggestions and details of errors pointed out.

REF: PWR01