

# BRADSTONE®

Hulland Ward, Ashbourne  
Derbyshire DE6 3ET  
Bradstone consumer helpline: 01335 372289  
General enquiries: 01335 372222  
Email: [bradstone.garden@aggregate.com](mailto:bradstone.garden@aggregate.com)

[bradstone.com](http://bradstone.com)



© Aggregate Industries UK Ltd.  
Registered address: Bardon Hall, Copt Oak Road, Markfield, Leicestershire, LE67 9PJ. No: 00245717



BRADSTONE®



You've got it in bradstone

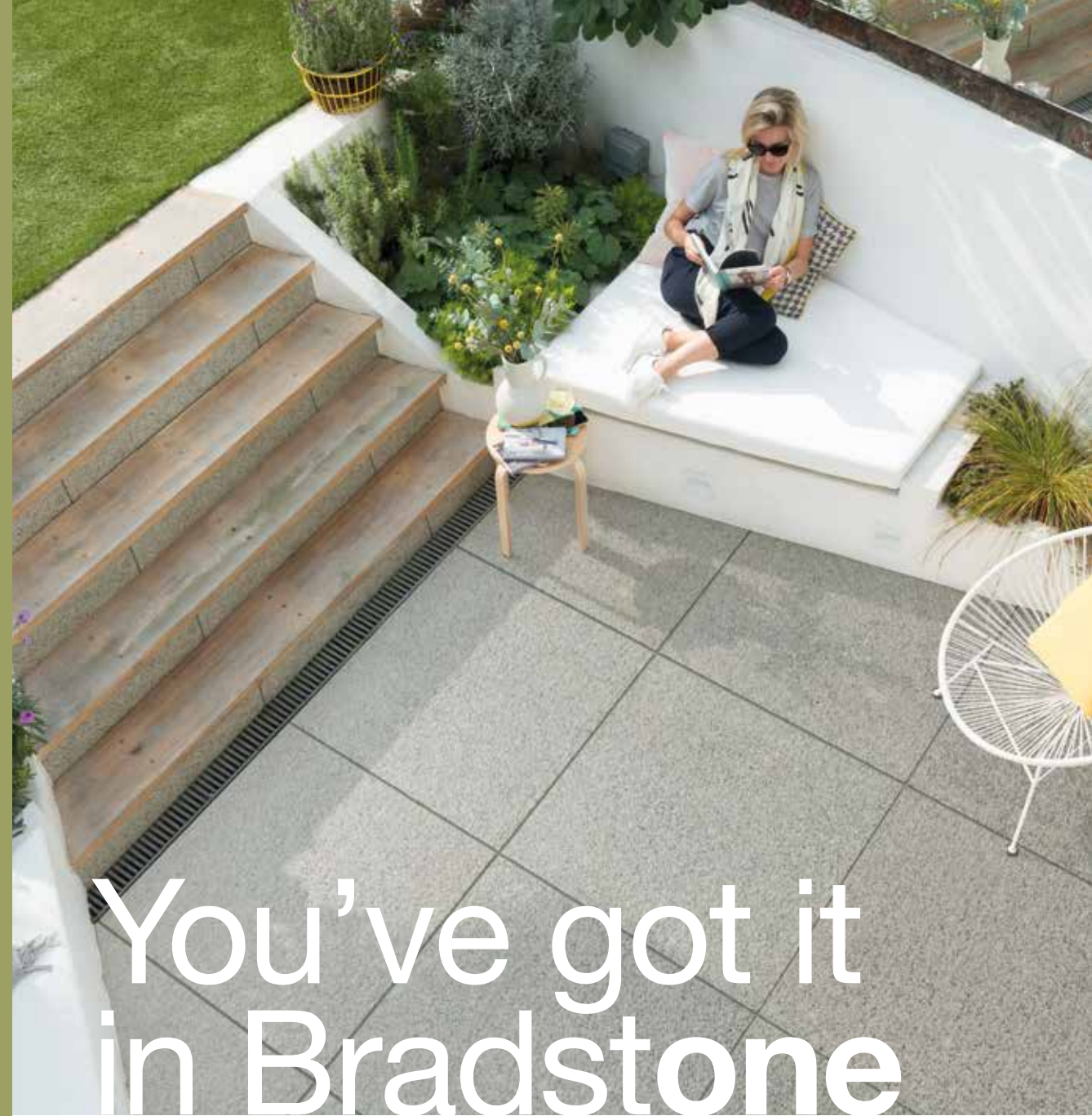
# BRADSTONE®

## You've got it in Bradstone

From driveways to patios, suntraps to garden paths, we've everything you need, all in one place, to transform your outdoor space into something great.

Arenaria paving in Dark Grey

This is just the start of your journey to transform your outdoor space, and we're with you every step of the way.



## You've got it in Bradstone

You've got an outdoor space, but you want to do more with it. You want space to entertain, to enjoy time with family and friends, to grow your own vegetables, to practice your gardening skills, to park your car in style, (and give your neighbours something to talk about.)

With Bradstone, you've got everything in one place to make it happen. Everything from driveways to patios, suntraps to garden paths.

All expertly designed and landscaped by a trusted network of landscapers, and brought to life from the widest range of paving styles.

We believe that any outdoor space can be transformed into something great.

**You've got it in Bradstone.**



Page 56

Old Town ECO paving in Grey-Green

Mode Profiled paving in Silver Grey



Page 14



Page 40

Natural Sandstone paving in Silver Grey



Page 6

# Contents

Introduction to Bradstone	6
<b>Porcelain Paving</b>	14
<b>Natural Stone Paving</b>	40
<b>ECO Paving</b>	56
<b>Concrete Paving</b>	72
<b>Driveway Block Paving</b>	90
<b>Landscaping Features</b>	110
Key product information	132

# You've got the dream We can make it a reality, like no one else

*For over 65 years we've had the pleasure of transforming outdoors spaces, bringing ideas to life in gardens and driveways.*

Whether you're looking for something easy to maintain, stunning style to make the neighbours jealous or even just a small patio area to relax in, your vision is our inspiration.

And we've always been there every step of the way. From design to sourcing sustainable materials and expert installation. Bradstone has always been the one place to go to transform any outdoor space.

Mode Profiled - Dark Grey



*We can do the hard work*

Why DIY when we have a team of professional landscapers that will help with the design and build of your outdoor space?

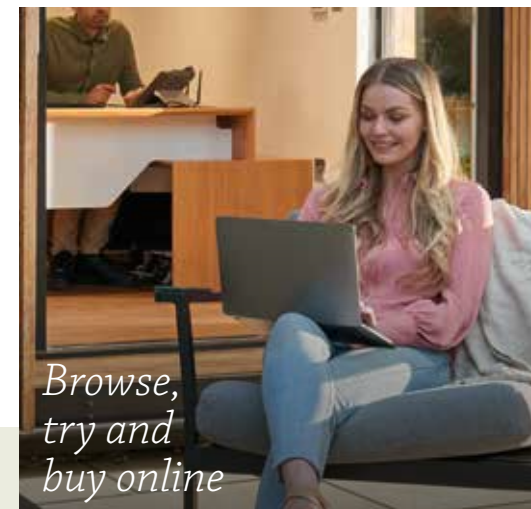
Find your Bradstone Assured Landscaper at [bradstone.com](http://bradstone.com)

**BRADSTONE**  Assured™

With large ranges of beautiful, top quality paving including porcelain, concrete and natural stone, plus our clever garden visualiser tool, there's no end of possibilities for your project.



*Endless possibilities*



*Browse, try and buy online*

While Bradstone products are available and supplied through a nationwide network of builders' merchants and retailers, you can also visit [bradstone.com](http://bradstone.com) to use our product selector tool, order free samples, try our new visualiser tool and even order your paving, all from the comfort of your garden chair.

Our priority is making sure that you enjoy your garden for years to come. If you choose to transform your space with an Assured Landscaper you will get the added bonus of the Bradstone Assured free guarantee.

10 year guarantee on products\*  
5 year guarantee on installation\*\*



*Guaranteed for years to come\**

# You've got the space We help you to transform it

## How to transform your outdoor space in five steps

We know transforming an outdoor space can be hard, that's why we've split the process into five easy steps. From finding the right style to sourcing the perfect landscaper, we'll help make your dream garden a reality.



"From start to transformational finish, I'm there for my customers every step of the way."

*Darren Plumridge*  
Bradstone Assured Landscaper

Romeli paving in Grey Blend

# 1

## Get some outdoor inspiration

Leaf through our beautiful transformations in this brochure to help you start to envision your perfect garden.



# 2

## Find your Assured Landscaper

Choose one of our Assured landscapers to help design and build your garden - all carefully assessed to guarantee the highest standards.

# 3

## Choose your paving style

From concrete to porcelain, simple to detailed, we have a range of beautiful paving to suit any outdoor project.

Can't decide on which paving to get? Try our Paving Selector tool to narrow down the choice and find what's right for you. See [beinspired.bradstone.com](http://beinspired.bradstone.com)



## Visualise your space

Now you can visualise your outdoor space with Bradstone paving. With Pave my Space you simply pick between Bradstone products and use the tool to see them come to life in your garden. Once you have chosen your perfect paving, order a sample to get a real feel for your favourite choices.

Visit [bradstone.com](http://bradstone.com) for more information.



# 5

## Get the right help

Whether it's technical support, laying tips, or product advice, our team is on-hand to help whenever you need us. If you've chosen to hire a Bradstone Assured installer don't forget to ask them for the guarantee form to register for your free guarantee.

Visit [bradstone.com](http://bradstone.com) for more information, call **01335 372289** or email [bradstone.garden@aggregat.com](mailto:bradstone.garden@aggregat.com)



# You've got an idea We've got the tips, tricks and inspiration



Page 22



Page 36

## Curved gardens

Expand your horizons by using curves in the garden to add interest and visually grow your space.



Arenaria paving in Dark Grey



Carpet Stones in Charcoal

Page 76

## Cottagecore

Learn how to create a country style garden that is full of pretty planting and up-cycled loveliness.



StoneMaster paving in Light, Mid and Dark Grey

Page 62

## Greener gardening

Your garden can do good for you and for our environment. Take a look at some tips and ideas for how to create an outdoor space that gives back.



Page 84

## One garden. Three designs.

Our Assured Landscapers are bursting with ideas for how to transform any garden. This next installment gives us even more ways to design an outdoor space in three completely different ways.



Page 100

## Kerb appeal

Make an amazing first impression from the front of your home with beautifully landscaped spaces and driveways.



Vetusto paving in Dune

## One garden. Three designs.

We asked our Assured Landscapers to inspire us with ideas on how to transform one garden into three completely different spaces. Take a look at what they did.

# You've got the style We've got a range to match

Page 14

## Porcelain paving

Porcelain paving doesn't require sealant, doesn't fade, is durable, and is easier to clean because it absorbs less moisture. Like natural stone, it is also ethically sourced.

Fiero paving in Bronze



Natural Sandstone paving in Silver Grey

Page 40

## Natural Stone paving

Our natural stone paving ranges include natural sandstone, limestone, granite and slate, all ethically sourced from around the world.

Page 56

## eco paving

As part of our sustainability commitment, we've developed a lower carbon concrete range. This ECO range is made up of garden paving (p56), driveway paving (p92) and walling and edging (p114 and 125).



Old Town ECO Evolve paving in Silver Grey

Page 72

## Concrete paving

Concrete is a hardwearing, sustainable solution suitable for a variety of paving projects. It's also proudly made in the UK (except for carpet stones) and is perfect for a range of budgets.



Mahina paving in Dark Grey



StoneMaster block paving in Dark Grey

Page 90

## Driveway paving

Our wonderful range of quality block paving allows you to turn your driveway into a beautiful focal point for your home, as well as a functional space for your car.



Prestige Walling in Cognac

Page 110

## Landscaping features

Walling, edging, steps, we're the one place that has everything, including all the finishing touches, to make a real difference to your project.

# Porcelain paving

## *Why choose porcelain?*

Porcelain is lower maintenance than other types of paving. It also doesn't require sealing, is durable and doesn't fade. Our Porcelain paving is rectified\* meaning near perfect straight edges for ease of laying and joint widths which are consistent.

### **Traditional**

Romeli® .....	20
Madera® Antigua .....	28
Rock .....	30

### **Contemporary**

Serameno® .....	16
Fiero® .....	18
Mode® Profiled .....	24
Vetusto® .....	26
Stylus® .....	32
Arenaria® .....	34
Tatra® .....	38

\*except Serameno

Mode Profiled paving in Silver Grey



Think Porcelain  
could be right  
for you?







Technical information



Looks great with Sawn & Tumbled Granite Setts see page 123

Serameno paving in Flint Charcoal

# Serameno<sup>®</sup>

*For vibrant colour and wow-factor detail.*

Serameno offers an incredible detailed finish replicating the look of natural stone with all the benefits of a Porcelain paver. Choose from three eye-catching colours: striking Flint Charcoal, warm Flint Buff and modern Flint Silver.

Our Serameno range is available as a 1000x500mm single sized paver.



Flint Charcoal (FC)



Flint Buff (FB)



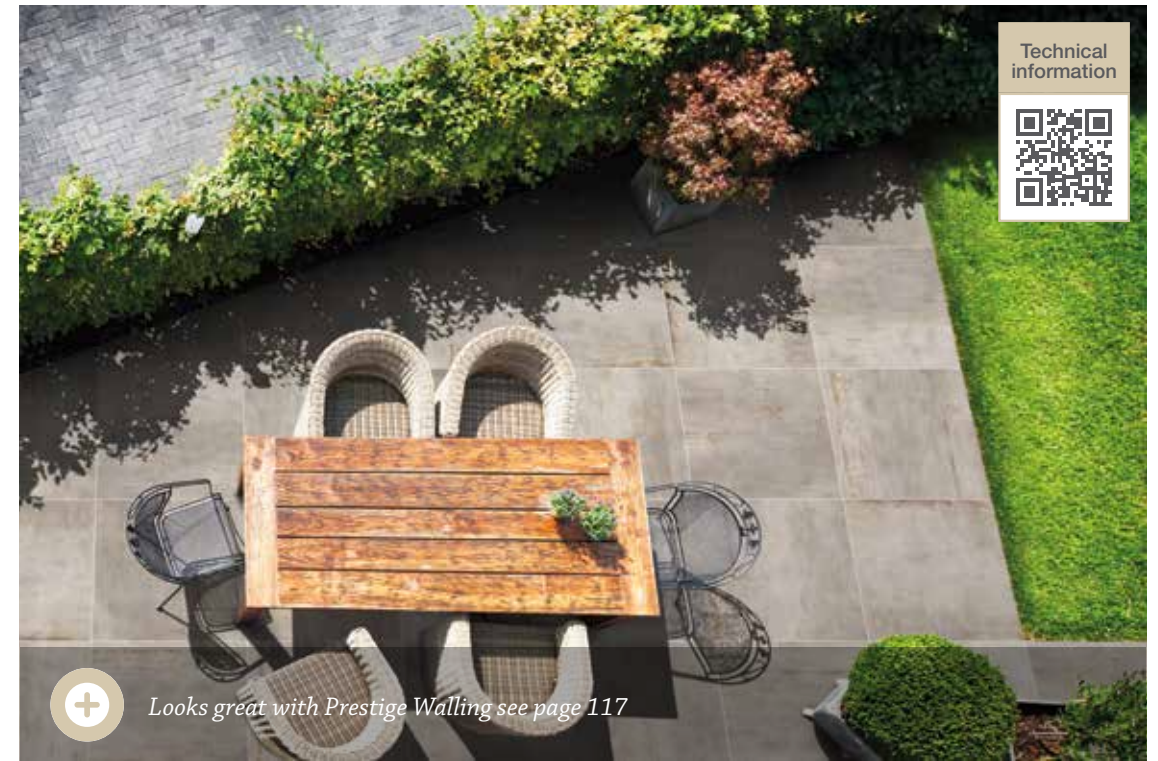
Flint Silver (FS)



Serameno paving in Flint Buff

*Our Assured  
Landscapers give this  
the thumbs up for:*

People who want a  
statement patio with a  
unique finish that stands  
the test of time whatever  
the elements throw at it.



Porcelain paving

Technical  
information



*Looks great with Prestige Walling see page 117*

Fiero paving in Silver

# Fiero<sup>®</sup>

*Make a striking feature of  
your outdoor space.*

As a contemporary industrial style paver this is the perfect addition to any modern property. A key feature is the oxidised metallic tones that can be seen within the finished design creating a beautiful feature out of any paved area.

Available in large format 900x900mm single sized pavers.



Silver (Si)



Lead (Le)



Bronze (Br)

Fiero paving in Bronze

# Romeli®

*Authentic design with traditional features.*

With fettled edges, Romeli is sure to bring character and charm to any garden. A hard-wearing, scratch resistant, lower maintenance paver that is ideal for patios wanting to create a timeless look. It is designed to mimic the look of natural stone with its unique qualities offering a wide variation in colour.

Romeli is available in an 800x400mm single sized paver.



Buff Blend (BB)



Grey Blend (GB)



Looks great with Natural Sandstone Setts page 122 or Natural Granite Setts page 123

Romeli paving in Buff Blend

# One garden Three designs



*We asked one of our Assured Landscapers to transform this garden however they wanted.*

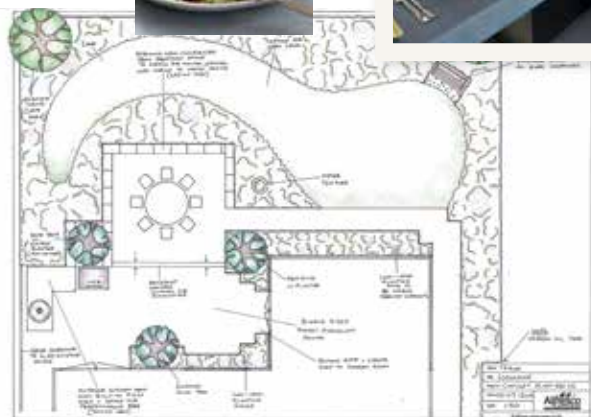
Alfresco Landscaping has been designing and building gardens for 17 years. We tasked them with taking one typically sized plot and designing 3 very different types of garden – suitable for those who dream of the perfect entertaining space; a family-friendly zone; or an on-a-budget outdoor project.

With Bradstone, you've got exclusive access to the expertise of Assured Landscapers like Alfresco to help transform your garden into your dream outdoor space.

Let's take a look at what they created.

## 1 The entertaining garden with a traditional feel.

Years of experience has taught Alfresco how to plan a garden space perfect for entertaining family and friends. Situated around expansive paved terraced areas, with space for alfresco dining and outdoor kitchen or barbecue area. A curved lawn feature adds space for plenty of planting, and bench seating allows you to relax in the heart of your garden.



## 2

### The family garden

Here, Alfresco has created the perfect garden where young children can happily play; teenagers can use their phones; and the grown-ups can just kick back and relax, creating zones for everyone to escape to. Two patio areas are connected by a large lawn area, which is maximised for the family to play games. While planting areas are reduced to save on overall maintenance but keep a natural feel. Plus, there's also plenty of secluded and screened areas for added interest and privacy.



## 3

### The modern garden

Naturally, people's tastes in style and needs can be different. With this in mind, Alfresco's modern contemporary design can be tailored to create a striking garden with design features and spaces to suit anyone. The space flows from relaxing to entertaining effortlessly with the help of textures and materials that lead the eye through the garden.

The contemporary 45 degree angle of the space matches the interior of the property while creating planting areas that are easily accessible. Features such as an outdoor kitchen, water features and structural planting complement the paving beautifully and create an environment that feels like home.



# Mode<sup>®</sup> Profiled

*The definition of contemporary elegance.*

Our Mode Profiled range is an all encompassing Porcelain range. The highlight of this paving is its fine riven texture containing mica crystals that glitter in the light, creating a sparkling shimmer effect. You'll also notice the subtle diagonal ribbon of colour, creating a unique design feature.

Available in 595x595, 595x295, 295x295, 895x445, 895x145 single sized pavers as well as an 18.36m<sup>2</sup> patio pack.

We also offer a single sized paver for indoor use\*. Our 10mm 595x595mm paver allows for a level and seamless transition once the paving is laid.

\*The finishes of the 10mm and 20mm pavers will differ slightly



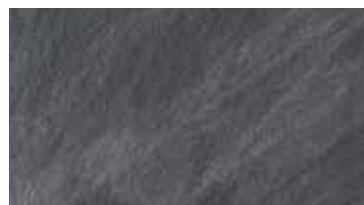
Honey Gold (HG)



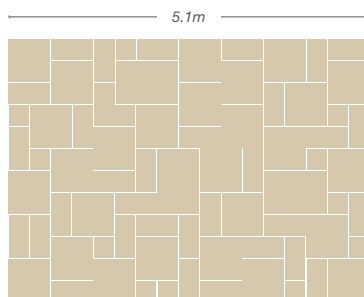
Dark Grey (DG)



Silver Grey (SG)



Graphite (Gr)



Technical information



Mode Profiled paving in Dark Grey



Mode Profiled paving in Silver Grey



Vetusto paving in Dune



Technical information



Looks great with Sawn & Tumbled Granite Setts see page 123

Vetusto paving in Rustic Gold

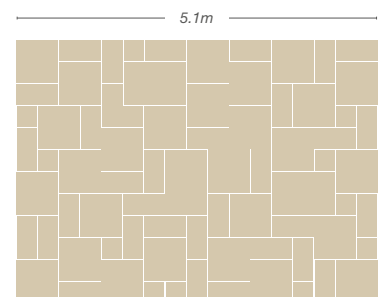
# Vetusto<sup>®</sup>

*The profile of slate, the personality of porcelain.*

Vetusto combines the characteristics of aged slate and the benefits of modern porcelain. Its distinctive colour brings a 'lived in' feel to your garden. Being porcelain, it's strong, durable and does not fade.

Available in an 18.36m<sup>2</sup> patio pack featuring three different sizes for a random, natural appearance. Our Blue-Black and Dune shades are also available in 895x595mm\*.

\*The finishes of the single-sized pavers and patio pack will differ slightly



Dune (Du)



Blue-Black (BB)



Rustic Gold (RG)



# Madera<sup>®</sup> Antigua

*Beautiful paving doesn't grow on trees.*

Madera Antigua brings an authentic aged timber look to any garden but without the warping or degradation associated with real wood. It's strong, lower maintenance, durable and fade-resistant. Madera Antigua comes in two shades, each with subtle variations. This paving can also be used to create a feature border to your garden design.

Available in a 900x150mm single sized paver.



Grey (Gy)



Oak (Oa)

“The best part is seeing each stage of the garden unfold to create the transformation we always dreamed of.”

*Becky - Bradstone customer*



Rock in Silver Grey

# Rock

*Stunning, hard-wearing paving.*

This stunning paving is designed to replicate Natural Sandstone in Silver Grey. Perfect for both modern and traditional properties, it's also hard-wearing, scratch-resistant and lower maintenance.

Available in a 900x600mm single sized paver.



Silver Grey (SG)

*Assured  
Landscaper  
Top Tip*



“Create an all-around authentic natural look with both traditional and different laying patterns.”

*Alastair Peat  
Bradstone Assured Landscaper*



# Stylus<sup>®</sup>

*Distinct character with intricate details.*

The universal character of these tiles also allows you to combine them with various materials, such as gravel and garden planting, creating a design that feels like it's always been part of the space.

It's available in Light Grey and Dark Grey and sizes 1200x600mm and 600x600mm.



Light Grey (LG)



Dark Grey (DG)



*Looks great with Slate walling slips  
see page 115 for more details*



Technical information



The big benefit of a patio pack is that it ensures you get a traditional look for your space.



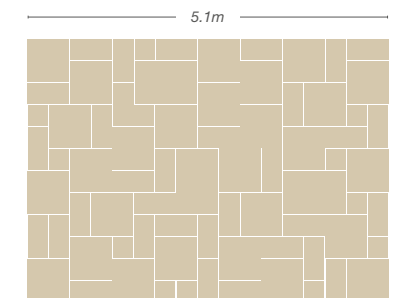
Arenaria paving in Light Grey, installed by Bradstone Assured Installer of the year 2022 Lee Harvey Designs – [www.leeharveydesigns.co.uk](http://www.leeharveydesigns.co.uk)

# Arenaria<sup>®</sup>

*When good looks meet practicality.*

Designed to replicate natural stone effect but with consistently accurate sizes for ease when laying, this paver is laid with thin joints for a traditional feel with a contemporary twist.

Available in an 18.36m<sup>2</sup> patio pack.



Dark Grey (DG)



Light Grey (LG)



Cream (Cr)



*Hard landscaping combined with soft curves creates a truly relaxing space*



## Curved

*Natural curves create calm, harmony and flow in smaller spaces.*

Arenaria paving in Dark Grey

### *Embrace your curves*

Many gardens in the UK are small and rectangular, where you can see the whole space at once. But as soon as you add some curves, it's a whole different story. A curved path leads to a hidden delight just around the bend. Making the whole space feel bigger, more interesting, and brings an added sense of privacy.



### *Curved furniture*

Mirror the curves in your garden by adding gently curving benches, round tables and chairs, and even beautifully curved pergolas, arches and arbours.

### *Choose porcelain paving*

The perfect choice for hard landscaping your curved garden. It's extraordinarily hardwearing and also chip and scratch resistant. Making it ideal for high footfall winding paths and for sculpting around curved patio areas.



**"Consistently accurate sizes allow porcelain paving to be laid with thin joints that create a contemporary look and feel"**

Lee  
Bradstone Assured  
Installer of the year





Tatra paving in Beige

New

# Tatra®

*Great style, great value.*

Having received a stylish update for 2022, our new and improved range of Tatra Porcelain is now available in three colours and sizes. This range is designed to replicate Natural Stone and features many of its unique characters such as its distinct veining whilst having all the benefits of Porcelain. Each paver is fully rectified with precision edges for easy laying.

Available in 600x600, 900x600 and 1200x600 single sized pavers.

Please note these pavers will not be compatible with the previous range of the same name.



Beige (Bg)



Dark Grey (DG)



Light Grey (LG)



Tatra paving in Light Grey

# Natural Stone paving

## *Why choose natural stone?*

Our natural stone is ethically sourced and of the finest quality. As well as being strong and hard-wearing, it's unique in style with no two pavers the same. Choose from many variations of colour and texture in contemporary and traditional styles.

### **Traditional**

Natural Slate.....	48
Natural Limestone .....	50
Natural Sandstone.....	52
Blended Natural Sandstone .....	54

### **Contemporary**

Smooth Natural Sandstone.....	42
Natural Granite .....	44

Natural Sandstone paving in Silver Grey at night

Natural stone paving



Think Natural Stone could be right for you?



# Smooth Natural Sandstone

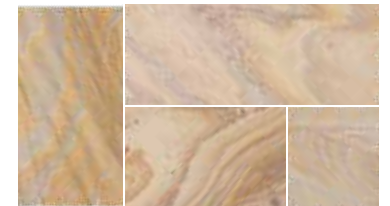
*A contemporary paving solution as unique and individual as you are.*

Smooth Natural Sandstone is beautifully distinctive with its superb colour and veining variations. Available in two striking shades, there's sure to be a perfect option for your outdoor space. We also offer a range of lightly textured steps to enable you to create a coordinated finish for your garden.

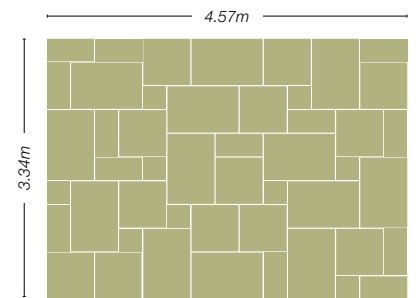
Available in a 15.3m<sup>2</sup> patio pack.



Dune (Du)



Rainbow (R)



Smooth Natural Sandstone paving in Dune

Smooth Natural Sandstone paving in Rainbow



Technical information



Looks great with Sandstone walling slips see page 115



Technical information



Looks great with Granite Setts see page 123

Natural Granite paving in Silver Grey

# Natural Granite

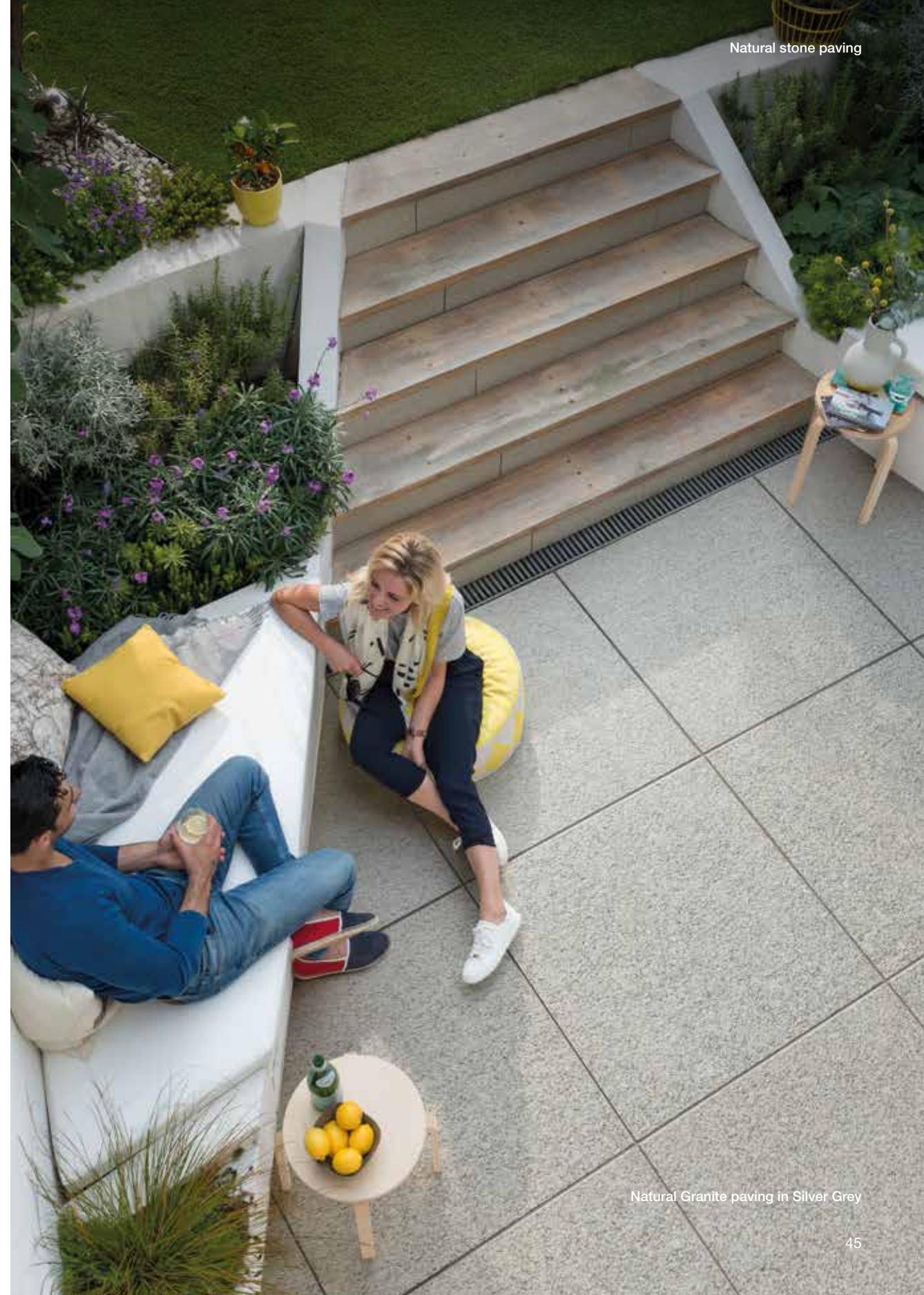


Silver Grey (SG)

*Combining outstanding natural beauty with long-lasting durability.*

Natural Granite brings a modern and minimalist feel to any outdoor space thanks to its straight machine cut edges and textured top surface. Also available in Natural Granite Setts see page 123.

Available in 900x900mm, 600x600mm, 600x300mm and 300x300mm single sized pavers.



Natural stone paving

Natural Granite paving in Silver Grey

# Time short? Create a low maintenance haven



Vetusto paving in Dune

Statement paving creates a beautiful 'no mow' environment.

*Follow these simple tips for a beautiful, easy-to-maintain garden.*

Life can get busy and our time is precious. No matter how much we love our garden and pruning and preening it, it's just not always possible to devote time to it. But there is a way to make your garden into the haven you want without the hard work.

## Lawn free

A lawn is a lovely feature, but larger areas can take time and effort to keep up with it. Why not consider paving your entire space and designing your foliage around incorporating planters, beds and pots to grow your favourite things.



Tatra paving in Silver Grey

## Choose all year round shrubs

Evergreen shrubs are those that thrive through a number of seasons. This means that come spring, summer, autumn or winter, you are guaranteed to have greenery and life in your garden without having to lift a finger (or a green thumb.)



Romeli paving in Grey Blend

## Plenty of pots

When it comes to designing a beautiful low-maintenance garden, there's no such thing as too many pots (just look at Cottagecore for example!) With different sizes, designs, shapes, and colours, the pot possibilities are endless. Just make sure that the plants are correct in size and type for the different pots.



## Go wild

It's OK to let your garden grow wild and free. The natural (wild) look can create a space that screams an "enchanted secret garden" with textures and natural shapes that work their way around the garden. OK a bit of pruning might be needed here and there, but it's about letting the garden do the work.

## Plant climbers

Trellises and walls can be the perfect canvas for growing plants and they don't need a lot of your attention. Let them grow and create their own path, and if you need to reign them in or redirect them, you always have the option to do that too.



# Natural Slate

*A paving solution like no other.*

Natural Slate creates a unique outdoor space every time. Every piece of slate is individual with its own textures and shades. And it's hand riven and diamond sawn for a crisper edge.

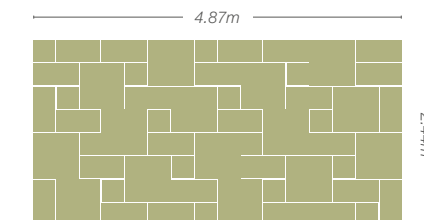
Available in a 11.88m<sup>2</sup> patio pack in both shades as well as 600x600mm and 600x295mm single sized pavers in Blue-Black.



Blue-Black (BB)



Grey-Green (GG)



Looks great with Granite setts see page 122 for more details

Technical information





Technical information



Natural Limestone paving in Blue-Black

# Natural Limestone

*Add a touch of drama and distinction to your garden.*

Natural Limestone offers outstanding beauty with unique shades and distinctive natural veining. At the same time, it has superb strength and durability, ensuring your patio looks great for years to come. Available in two stunning colours, Blue-Black and Azure, each colour varies in shades due to the natural element of the paving. As a matter of course Natural Limestone will fade in the sunlight, adding to its beauty.

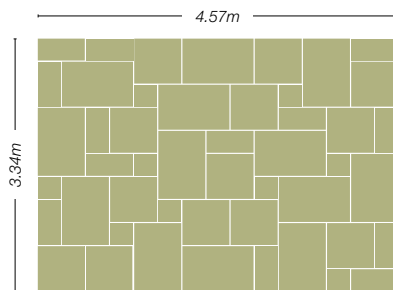
Available as a 15.3m<sup>2</sup> patio pack in both colours and 900x600mm, 600x600mm and 600x300mm single sized pavers.



Blue-Black (BB)



Azure (Az)



Natural Limestone paving in Azure

# Natural Sandstone

*Helping you create a garden feature that's unique.*

Natural Sandstone will give your patio that touch of exclusivity. The many natural tonal variations, differing riven profiles and exquisite natural veining makes every paver unique. This range offers four beautiful natural shades, varied shapes and individual textures so you have a wealth of design possibilities. Also available in Natural Sandstone Setts see page 122.

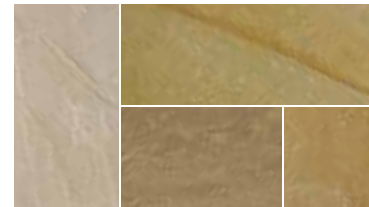
Available in a 15.3m<sup>2</sup> patio pack as well as 900x600mm, 600x600mm, 600x300mm and 300x300mm single sized pavers and circle packs in up to four shades with complementary walling and edging.



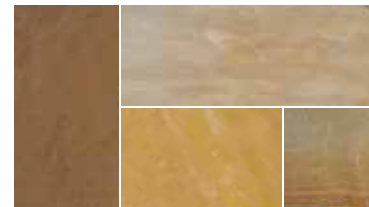
Natural Sandstone paving in Silver Grey.



Fossil Buff (FB)



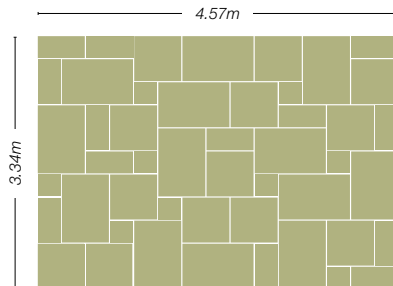
Autumn Green (AGr)



Sunset Buff (SB)



Silver Grey (SG)



*The natural texture creates a wild and rustic atmosphere. Perfect for evoking the Cottagecore trend.*

See page 76 to find out more about Cottagecore



Natural Sandstone paving in Autumn Green  
Looks great with Natural Sandstone edging see page 125 for more details

# Blended Natural Sandstone

*An economical calibrated paving with natural quality.*

Blended Natural Sandstone calibrated patio packs are hand cut and hand dressed to give a more rustic finish. They come in four specially selected colour blends and the pavers are lighter in weight than standard Natural Sandstone, making them easier to handle and ideal for those lower budget projects that still require a natural product.

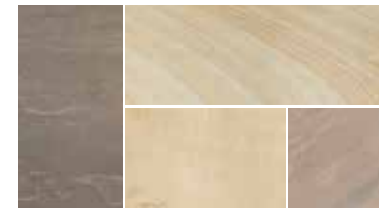
All shades are available as a 19.52m<sup>2</sup> patio pack or a 900x600mm single sized paver.



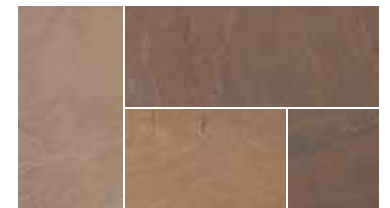
Imperial Green (IG)



Rustic Grey (RG)



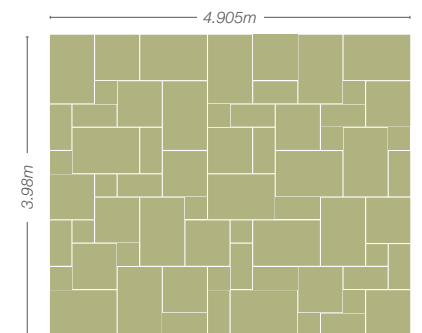
Rustic Buff (RB)



Burnt Umber (BU)



Blended Natural Sandstone paving in Imperial Green

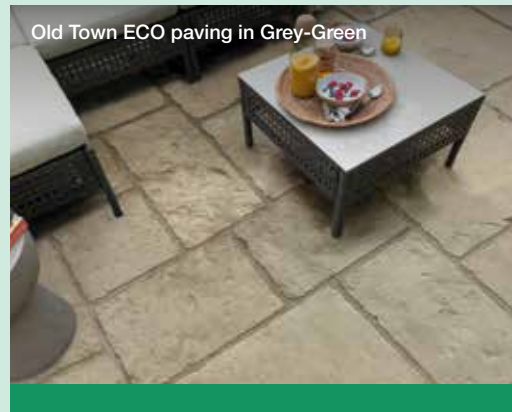


Blended Natural Sandstone paving in Rustic Grey

# ecological

*Same style and quality.  
Now lower carbon.*

Go greener with Bradstone's new lower carbon paving, ECO. The same beautiful paving you expect from us, but now we have reduced our carbon footprint by more than 20%. So a typical 30m<sup>2</sup> patio offers a carbon saving equivalent to that generated by three mature trees\* over a year. We also have Old Town Silver Grey ECO evolve. An even more sustainable choice with 35% less carbon, that's easier to handle, transport and lay too.



Old Town ECO paving in Grey-Green



Old Town ECO evolve paving in Silver Grey

## *A greener future.*

We believe in building a more sustainable world for people and the environment. On our way to becoming a Net Zero company, we constantly try to innovate and accelerate our carbon reduction by introducing environmentally friendlier products.

We are constantly looking to improve and add to our ECO range of products.

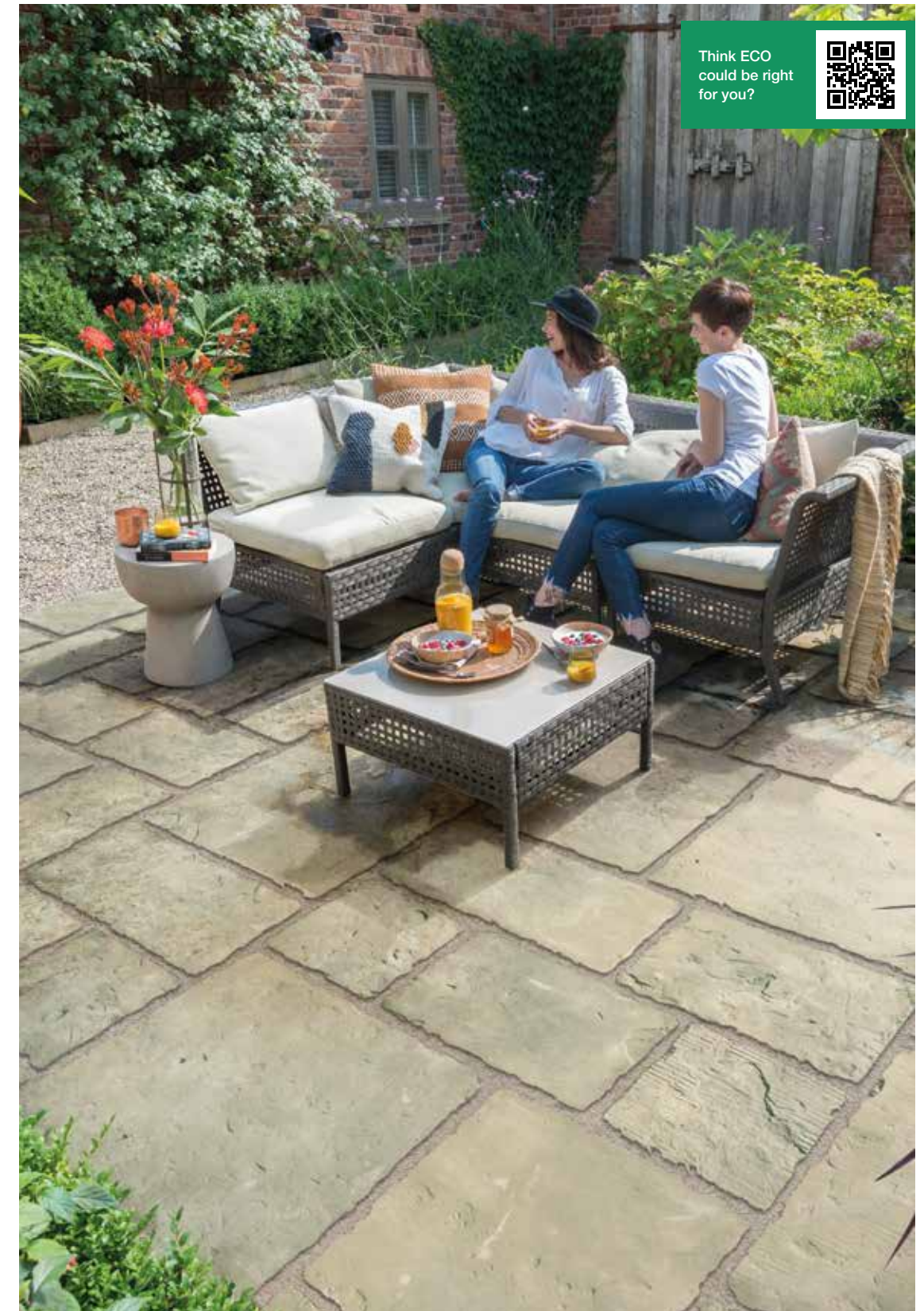
To find out more head to [bradstone.com](http://bradstone.com)

**eco™ ecoevolve™**

Old Town® ECO evolve .....	58
Old Town® ECO.....	60
Old Riven ECO.....	64

Aged Riven ECO .....	66
Ashbourne ECO .....	68
Edale ECO .....	70

\*Per 30m<sup>2</sup> according to European Environment Agency



Think ECO  
could be right  
for you?





More than 35% CO2 reduction compared to the previous Old Town mix.



Technical information



Old Town ECO evolve paving in Silver Grey



# Old Town<sup>®</sup> ec<sup>o</sup>evolve™

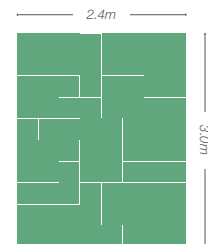
*An even more sustainable choice.*

Old Town ECO evolve has more than a 35% carbon reduction compared to traditional Old Town paving. The product is lighter and easier to handle, all the while maintaining the same standards of quality and strength. With a different laying pattern to Old Town ECO it is now faster to lay as well.

Available in a 7.2m<sup>2</sup> patio kit containing four sizes, 900x600mm, 600x600mm, 600x300mm and 300x300mm.



Silver Grey (SG)



Old Town ECO evolve paving in Silver Grey



# Old Town<sup>®</sup> eco<sup>™</sup>

*Lower carbon footprint, same premium quality*

We've lowered the carbon footprint of our Old Town ECO mix by more than 20% - but still with the same great quality as before. Made using moulds of the floor of a 19th century Lancashire Cotton Mill, it's finish looks just like authentic reclaimed stone. So you can relive the charm of days gone by, original tooling marks, weathered edges and all. There are over 25 different profiles in the range to give a truly authentic appearance to your patio. Making it perfect for creating a garden with a traditional look, while reducing your carbon footprint too.

All three shades are available in a 6.4m<sup>2</sup> patio kit featuring six different sizes and 900x600mm, 600x600mm, 600x300mm and 300x300mm single sized pavers. We also offer two sized circles, walling, coping and edging in all shades.



Grey-Green (GG)



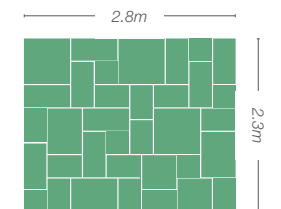
Old Quarried (OQ)



Weathered Limestone (WL)



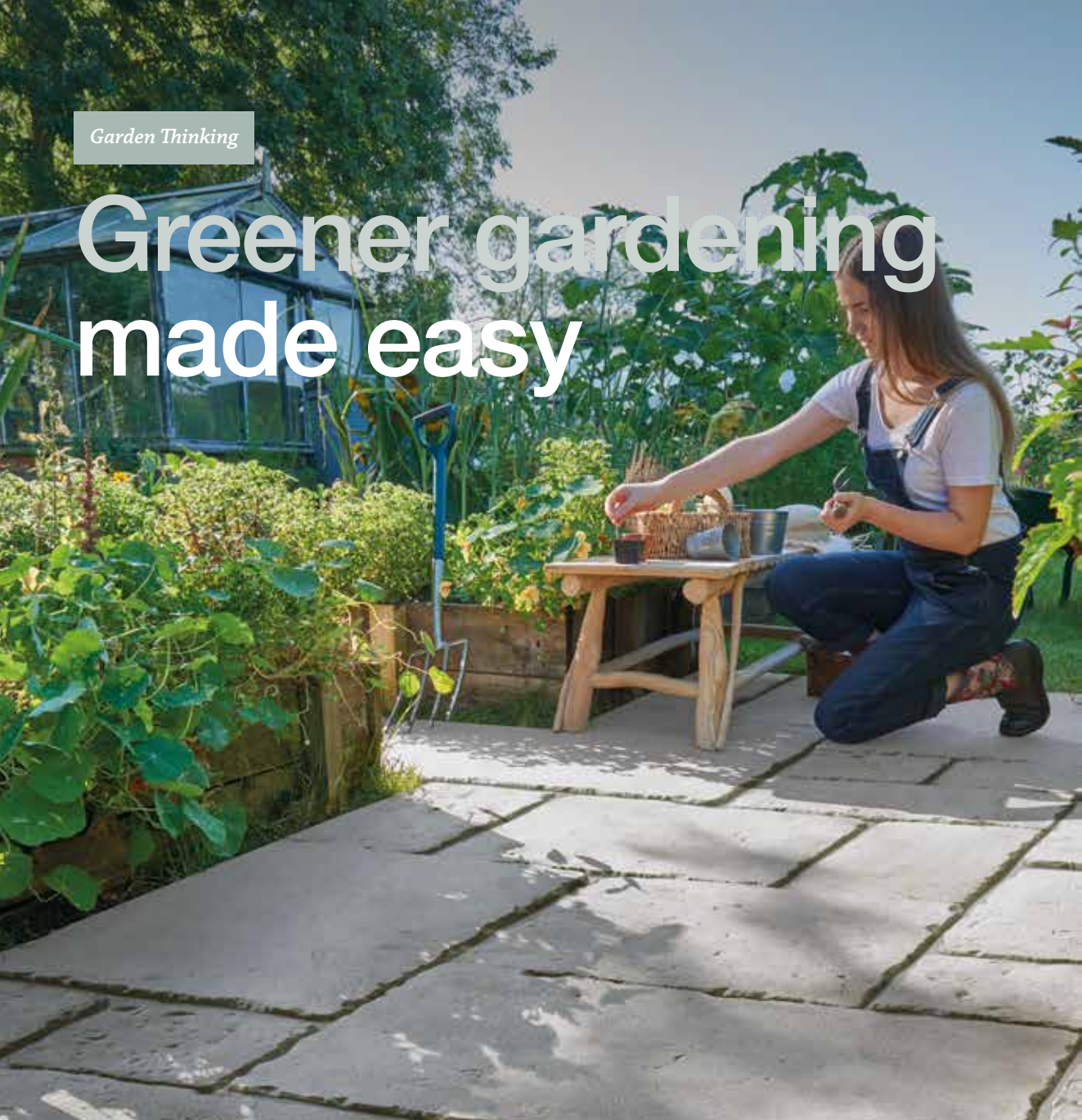
Old Town ECO paving in Old Quarried



Old Town ECO circle paving in Grey-Green.  
Looks great with Old Town ECO edging see page 125 for more details



# Greener gardening made easy



*You might think that a greener garden means more work... but we're here to show you how easy it can be in just 4 steps.*

We're all conscious about doing our bit to help protect our environment. Your own garden can be the perfect place to do this. Little changes like swapping to peat-free compost, creating environments for wildlife to thrive and reusing rainwater can all help. And best of all, they're easy to do with no fuss.

ECO paving



## 1 Go peat free

Peat comes from places called Peatlands. These vast (and beautiful) lands are highly effective at storing carbon and providing precious habitats for wildlife. However, when Peatlands are damaged to create compost, the land releases the carbon back into our environment and destroys habitats.

You can help by simply choosing peat-free compost, planting directly into your soil or letting leaves decompose to feed the soil naturally.



## 2 Rain gardens

We might not love the rain, but when it comes we should make the most of it! Rain gardens are easy to manage, collecting rainwater to feed your garden continuously. Simply choose a section of your garden located by a sloped or hard surface and incorporate a way of collecting the rainwater. This could be a plant bed or simply a water butt.

## 3 Plant for pollinators

The buzz of wildlife in any garden brings energy and life. By choosing plants that attract pollinators, your garden can become a safe haven for bees and insects that depend on a variety of plants and flowers to survive.



## 4 Reduce plastic

Plastics are commonplace in a lot of the everyday products we use for the garden. But it's really easy to swap your usual plastic go-to's with natural options. For example, swap plastic seed trays for wooden ones, invest in a metal watering can, and even down to plant labelling where you can use a wooden or bamboo stick instead of a plastic one.







# Old Riven

## eco™

*Visual appeal with options galore.*

The Old Riven ECO is an environmentally friendlier product perfect for creating an affordable patio area that doesn't compromise on style or quality. With more than 20% lower carbon footprint than before, Old Riven ECO has an authentic look with straight sawn edge detail, inspired by natural quarried stone.

Available in a 9.9m<sup>2</sup> patio pack, 600x600mm, 600x300mm and 300x300mm single sized pavers in all four shades. Matching Ø2400mm circles, walling, coping and edging are available in Autumn Silver and Autumn Cotswold.



Old Riven ECO circle in Autumn Silver



Autumn Bronze (AB)



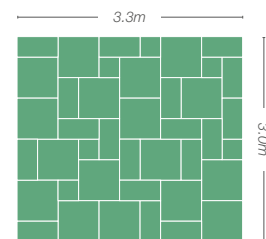
Autumn Cotswold (AC)



Autumn Gold (AG)



Autumn Silver (AS)



More than 20% CO<sub>2</sub> reduction compared to previous version of the mix.



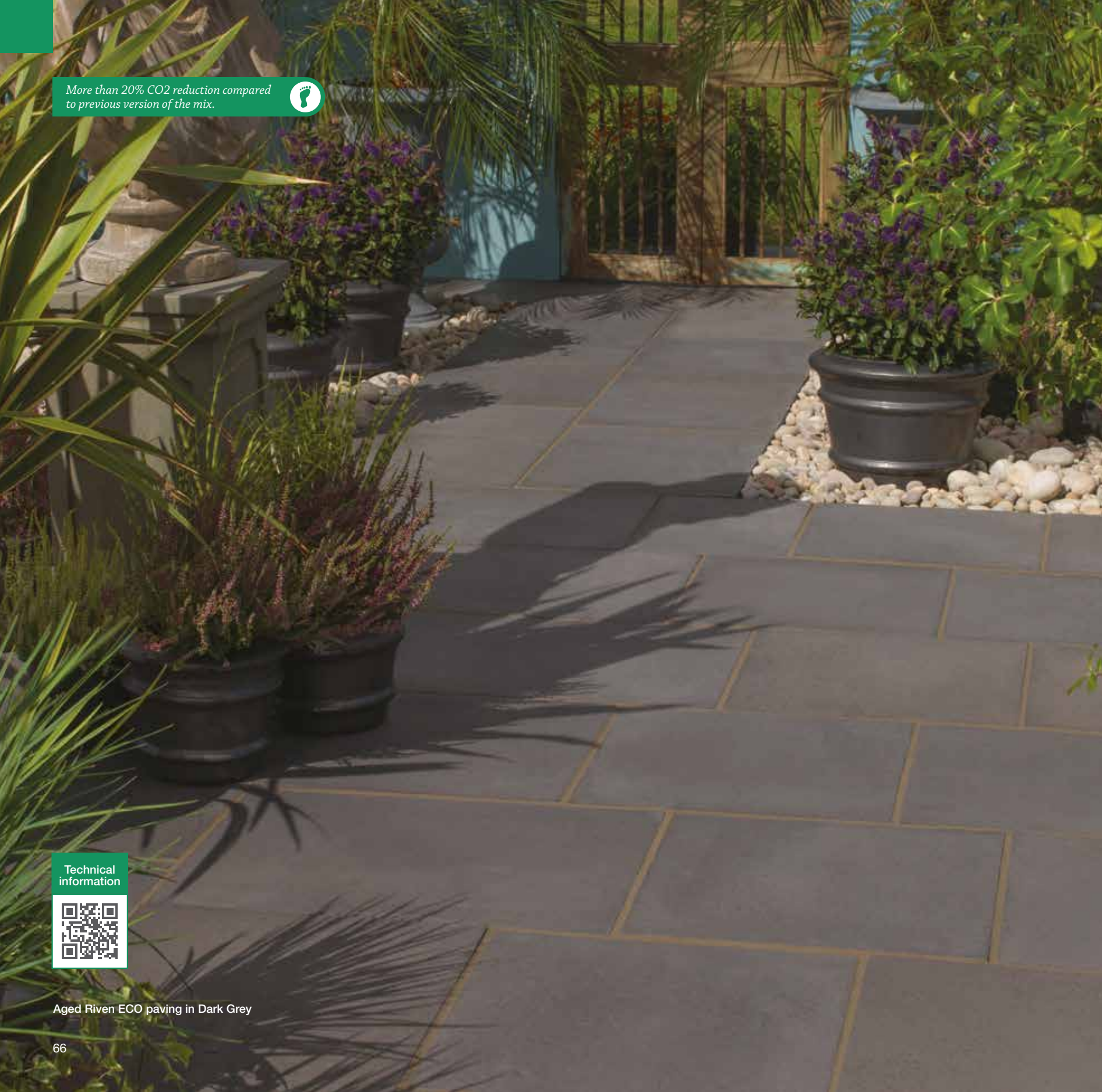
Technical information



 Looks great with Old Riven ECO edging (page 127) and Old Riven ECO walling (page 119)



More than 20% CO2 reduction compared to previous version of the mix.



# Aged Riven eco™

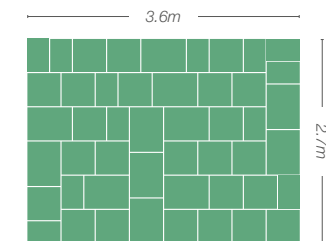
*Traditional style and charm comes of age.*

Aged Riven ECO combines the old with the new in perfect harmony. Improved in 2021, it has a reduced carbon footprint of more than 20% compared to the previous version of the product. It's distinctive weathered profile gives the paving a traditional, timeworn appearance, while its smooth edges add a modern feel.

Available in a random style 9.72m<sup>2</sup> patio pack, as well as a 450x300mm single sized paver to create a more uniform pattern.



Dark Grey (DG)



Technical information



Aged Riven ECO paving in Dark Grey



Looks great with Easy Stack ECO Walling see page 114 for more details

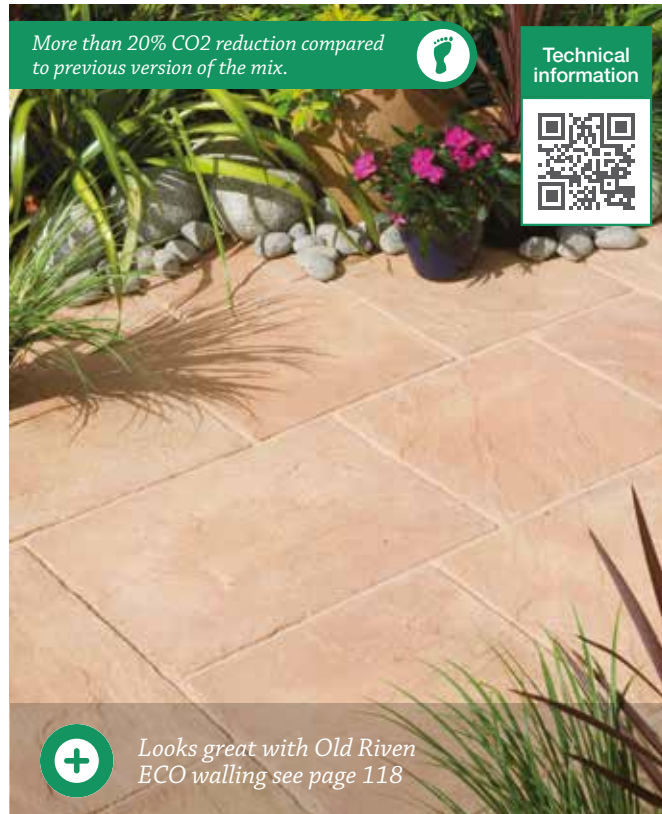


# Ashbourne<sup>TM</sup> eco<sup>TM</sup>

*Give your patio a rustic feel.*

Ashbourne ECO is a distinctive style paving with a riven surface and fettled edges, creating a stunning, authentic natural stone appearance. With a new and improved mix we've reduced its carbon footprint by more than 20% than before, offering you a more sustainable solution for your garden project.

It's available in a 9.72m<sup>2</sup> patio pack containing three different sized pavers, so you can create a garden feature that's naturally eye-catching.



More than 20% CO<sub>2</sub> reduction compared to previous version of the mix.



Technical information



Looks great with Old Riven  
ECO walling see page 118

Ashbourne ECO paving in York Gold



Cotswold (Ct)



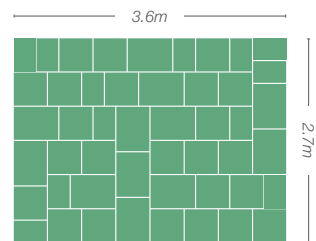
York Brown (YB)



York Gold (YG)



Weathered Grey (WG)



Ashbourne ECO paving in Weathered Grey

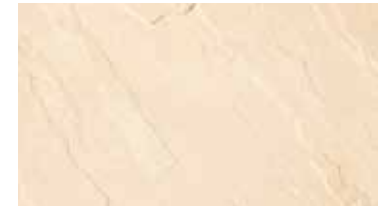


# Edale eco™

*A great value,  
traditional paving.*

Edale ECO is a gentle riven paving with smooth edges inspired by the stony footpaths seen on country walks. With an improved mix to reduce its carbon footprint by more than 20% than before, Edale ECO is an affordable and traditional paving range that doesn't compromise on style or decorative appeal.

Available in 450x450mm and new for 2023 600x600mm single sized pavers.



Cream (Cr)



Grey (Gy)



Dark Grey (DG)



Edale Eco paving in Dark Grey



# Concrete paving

## *Why choose concrete paving?*

Concrete paving is hard-wearing, durable and strong. Choose from endless design options, sizes and styles with either an authentic aged appearance or a contemporary look. Complete the look with our range of accessories see page 110.

### **Traditional**

Carpet Stones .....	74
Peak .....	88

### **Contemporary**

StoneMaster® .....	78
Panache Ground .....	80
Mahina® .....	82
Textured.....	86



*Looking to go greener?  
See page 56 for our  
concrete ECO range.*

Mahina paving in Dark Grey



Think Concrete  
could be right  
for you?





Carpet Stones in Charcoal

# Carpet Stones

*Liven up your outdoor space – give it a carpet!*

Carpet Stones are easy to lay to achieve an intricate rustic design in your garden. The cobbles are pre-laid on an underlying flexible mat, which can be simply cut with a pair of scissors to fit any awkward areas or to create elaborate designs. With the correct preparation our Carpet Stones can also be used on your driveway.

Available in 1200x400mm.



Charcoal (Ch)



Rustic Red (RR)



Carpet Stones in Rustic Red

*The natural texture creates a wild and rustic atmosphere. Perfect for evoking the Cottagecore trend.*

See page 76 to find out more about Cottagecore



# Cottagecore

*A garden trend with its roots in the past*

Carpet Stones in Charcoal

## The Garden Edit

### 5 simple ways to create a Cottagecore garden – embrace a wholesome country theme

#### Plentiful pretty planting

A relaxing planting style, creating a rich tapestry of colour, is key to a cottagecore garden. If you're starting from scratch, take a trip to your local garden centre and get some advice on pretty, traditional plants such as poppies, lupins, lavender, foxgloves and, of course, trellises draped in wild climbing roses, cherry blossoms, and wistful wisteria.



#### Include a garden room

A garden room, or summerhouse, is the perfect place for chilling out when the sun is too high, or getting away from it all on cooler days. Decorate it with vintage treasures – and don't forget the kettle or the cocktail shaker!

#### Go for a stone with a natural look.

Think winding paths, hidden nooks and crannies and pretty patio areas, to give a traditional, cottage garden vibe. Bradstone has many stunning ranges of beautiful, hardwearing paving, with an authentic lived in feel being the very essence of its charm.

#### Repurpose old furniture.

Take vintage, pre-owned or damaged furniture – tables, chairs, mirrors, and even fireplaces – and get creative with the sandpaper, paints and chintzy fabrics and prints.





StoneMaster paving in Light Grey, Mid Grey and Dark Grey



# StoneMaster<sup>®</sup>

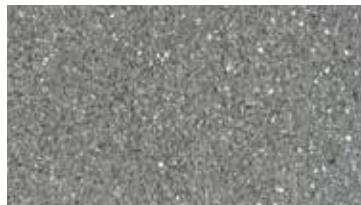
*Contemporary paving that's long on style, quality and durability.*

StoneMaster is a long aspect paving which can be used to create the illusion of more space in your garden. Available in three grey shades to replicate natural granite, they're sold in single colour packs which you can mix to create the perfect look. It's also treated with Bradstone Surface Protection to make it less susceptible to stains from oil, grease and moss. Looking to use StoneMaster to transform your driveway? Head over to page 94 to find out more about StoneMaster block paving designed specifically to be a hard wearing alternative to StoneMaster paving.

Available in 800x200mm single sized pavers.



Light Grey (LG)



Mid Grey (MG)



Dark Grey (DG)

## *Assured Landscaper Top Tip*

# You can give the illusion of space by choosing longer aspect paving.





Up to 88% recycled content



# Panache Ground

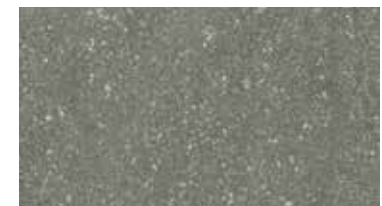
*The easy way to make any patio sparkle.*

Panache Ground can make your patio sparkle with its smooth surface and light reflecting particles. Available in two stunning shades which can be mixed to create your own unique outdoor area. And, up to 88% recycled content, it's kinder to the environment too.

Available in 450x450mm single sized pavers.



Silver Grey (SG)



Midnight Grey (MG)

Technical information



Panache Ground paving in Silver Grey and Midnight Grey



# Mahina®

*Contemporary paving  
given a touch of style.*

Mahina paving gives any garden a modern and refined feel with its stylish textured finish. It is available in two shades, both with a contemporary fleck to replicate granite, allowing you to create a unique look. And, up to 60% recycled content, it's environmentally friendly too. Look out in 2023 for two new shades, Chocolate and Buff.

Available in 600x600mm and 450x450mm single sized pavers.



Natural (Na)



Dark Grey (DG)



Mahina paving in Dark Grey

# One garden Three designs

*We asked one of our Assured Landscapers to transform this garden however he wanted.*

Keyscape Gardens has experience in designing and building gardens for 30 years. Taking a typical sized plot, we asked them to design 3 very different types of garden – suitable for those who are on-a-budget, want a low maintenance space or dream of an outdoor space that gives back to them and the environment.

With Bradstone, you've got exclusive access to the expertise of Assured Landscapers like Keyscape Gardens to help transform your garden into your dream outdoor space.

Let's take a look at what they created.



## 1 The low budget garden

Like all of our Assured Landscapers, Keyscape Gardens knows how to make a big impact with a small space or budget. Here, they transformed the garden by adding planting beds to the bottom and side of the plot – plants can be bought when young and will grow and mature to create a lush backdrop. They included a cost effective patio area and added cheap and cheerful tubs and planters.



## 2 The grow your own garden

Our Assured Landscapers are passionate about designing gardens that give back to people and the environment. From conserving rainwater to putting home-grown veggies on your plate, Keyscape Gardens design shows how with a few clever areas for raised planters, a water butt and even a greenhouse, you too can have a grow your own garden in no time.

## 3 The low maintenance garden

If spending more time enjoying your garden than working on it is more your thing, Keyscape Gardens has expertly designed a garden that looks good with little maintenance needed. They have designed a space full of interest and texture, with zones that are paved, pebbled and graveled. Potted plants flank the pathways and adorn the patio areas, creating a beautiful display of easy to maintain flowers and plants.





# Textured

*Style and practicality working together in perfect harmony.*

Textured paving offers the perfect balance of flair and function. It incorporates fine white limestone chippings to provide a softened appearance. It is also durable and hard-wearing enough to retain it's good looks over the years.

Available in 600x600mm and 450x450mm single sized pavers in all four shades.



Red (Rd)



Buff (Bf)



Grey (Gy)



Dark Grey (DG)



Technical information





# Peak

*Utility paving.*

Peak utility paving is a tough, hard-wearing and low-cost paving solution, making it the perfect base for utility areas and sheds. However, it should not be used for feature areas. All four colours are available in a riven 450x450mm and 600x600mm. Buff and Natural are also available in a smooth 400x400mm, 450x450mm and 600x600mm.



**IMPORTANT INFORMATION:** *Peak utility paving should not be used in feature areas. This product is for use under bins, sheds and greenhouse floors only.*



Riven  
Technical  
information



Smooth  
Technical  
information



Peak Riven utility paving in Dark Grey

Riven



Buff (Bf)



Natural (N)



Red (Rd)



Dark Grey (DG)

Smooth



Buff (Bf)



Natural (N)

*Assured Landscaper Top Tip*

A hard wearing utility paver, Peak is for use under bins, sheds and greenhouse floors only.

# Driveway Block paving

## *Why choose driveway block paving?*

Bradstone's range of driveway block paving products provides a variety of driveway solutions that are the very epitome of style and practicality.

### **Traditional**

BradDrive® Cobblestone ECO.....	92
Woburn Rumbled .....	96
Woburn Rumbled Kerbs .....	98
Woburn Rumbled Infilta.....	98
Monksbridge .....	102
Lumley Cobble .....	107

### **Contemporary**

StoneMaster® .....	94
Woburn Original.....	99
Driveway .....	104
Driveway Infilta .....	106
Kerbs .....	108
Installation solutions.....	109

StoneMaster block paving in Dark Grey



Think Driveway block paving could be right for you?



**IMPORTANT INFORMATION:** Although every effort is made to ensure accuracy, all images are for illustrative purposes only. Due to varying light conditions, it is not always possible to show the true colours of our products in a photograph. To ensure you are completely happy with the product before ordering, you can order a sample at [bradstone.com](http://bradstone.com) or from our Customer Care team on 01335 372289.



# BradDrive<sup>®</sup> Cobblestone **eco**<sup>™</sup>

*Design your perfectly  
authentic rustic driveway.*

BradDrive Cobblestone ECO gives you an authentic rustic effect, with a lower carbon footprint. An improved, sustainable product giving more than a 20% carbon reduction compared to the previous version of the product. With five different sizes you can create your own unique driveway. The Grey jointing compound is included as part of the system, so your cobbles can be laid in a random pattern, a single colour or a mixture of colours for a more striking style.



Brown (Br)



Anthracite (An)



Grey (Gy)



BradDrive<sup>®</sup> Cobble



**IMPORTANT INFORMATION:** BradDrive Cobblestone is laid differently to standard block paving and is not suitable for use in all ground conditions. For more information please visit [bradstone.com](http://bradstone.com)



Technical  
information





# StoneMaster®

*Mastering the look and feel of natural granite.*

StoneMaster is a superbly realistic substitute for natural granite. Available in three grey shades, they're sold in single colour packs which you can mix to create the perfect look. StoneMaster is available in 50mm thick mixed sized packs containing four different sized pavers or in the ultra contemporary 60mm thick 300x100mm single size. It's also treated with Bradstone Surface Protection for easier maintenance of stains from oil, grease and moss.

Why not coordinate your driveway with your garden paving? StoneMaster is also available in flag paving so you can continue the look around your whole home.



Dark Grey (DG)



Mid Grey (MG)



Light Grey (LG)



*StoneMaster block paving in Light, Mid and Dark Grey, installed by Bradstone Assured landscaper S&D Paving – [www.sanddpaving.co.uk](http://www.sanddpaving.co.uk)*



*StoneMaster block paving in Light, Mid and Dark Grey, installed by Bradstone Assured landscaper A1 paving – [www.a1paving.co.uk](http://www.a1paving.co.uk)*





# Woburn Rumbled

*Create an unforgettable first impression.*

Woburn Rumbled brings a delightful cobble style block paving to any driveway. This block paving features a weathered appearance and mottled effect, which helps create a sense of real period charm and character.

Please note this product will be changing in 2023. Go to **bradstone.com** for the latest information and to order samples.



Autumn (Au)



Rustic (Ru)



Brindle (Bd)



Graphite (Gr)



Kerb in Autumn (Au)



Kerb in Rustic (Ru)



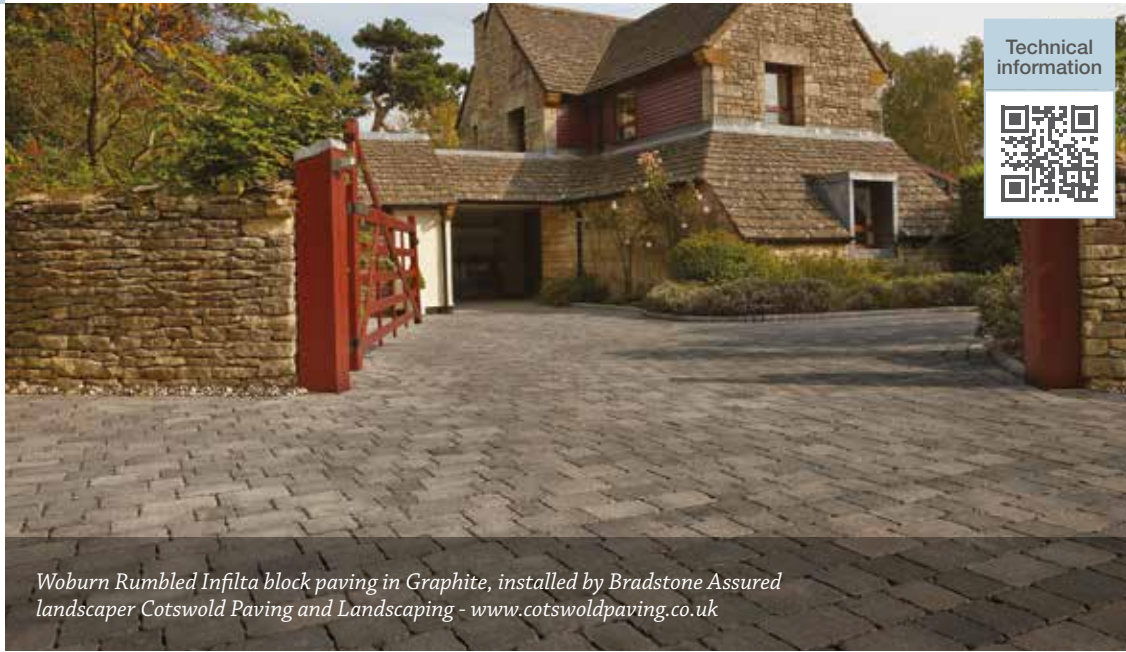
Kerb in Graphite (Gr)



Technical information



*Woburn Rumbled block paving in Graphite installed by Bradstone Assured landscaper Alcourt Landscapes - [www.alcourtlandscapes.co.uk](http://www.alcourtlandscapes.co.uk). Achieve this look with our Woburn Rumbled kerbs in graphite.*



Technical information



Woburn Rumbled Infilta block paving in Graphite, installed by Bradstone Assured landscaper Cotswold Paving and Landscaping - [www.cotswoldpaving.co.uk](http://www.cotswoldpaving.co.uk)



Technical information



Woburn Original block paving in Graphite



# Woburn Rumbled Infilta

*Create an unforgettable first impression.*

Woburn Rumbled Infilta offers the distinctive period charm and character of Woburn Rumbled block paving. To be used with a permeable sub-base, it provides a surface that filters surface water away, stopping it from collecting on the driveway. This is particularly important in light of stringent legislation regarding front driveways\*. It's available in three shades, all of which perfectly complement the cobble style.

Please note this product will be changing in 2023.

\*Go to [bradstone.com](http://bradstone.com) for the latest information and to order samples.



Autumn (Au)



Graphite (Gr)



Rustic (Ru)



# Woburn Original

*Tough enough to cope, stylish enough to stand out.*

Woburn Original is everything you need from a driveway. It's tough and uncompromising in performance to withstand the rigours of daily vehicle use. It's also beautifully contemporary with style cues from natural sandstone setts and is available in three shades.

Please note this product will be changing in 2023. Go to [bradstone.com](http://bradstone.com) for the latest information and to order samples.



Autumn (Au)



Graphite (Gr)



Rustic (Ru)

# Give your home kerb appeal



*Your house has the power to catch the eye of passers-by and be the best house on the street. Here's how you can create the ultimate kerb appeal for your home.*

To achieve real kerb appeal, it's all about setting the perfect scene at the front of your home. Whether it's a colourful front door, blooming-marvellous planting or a beautifully paved driveway, these are all ingredients for creating a stunning first impression and welcome to your home.

## *First impressions*

Your front outdoor space can reflect everything from your home to your personal style. Add contrast between your home's brickwork and your paving, bring a pop of colour with a statement front door, add lighting to the doorway or spotlights leading to the house. What kind of impression do you want to make?



## *Finishing flourishes*

Liven-up shady corners and add texture with landscaping accents such as potted plants and hanging baskets. These are quick and easy ways to add interest to the front of your home. Especially when you want less to take care of without losing any of the impact.



## *Creative paving*

It's not just a space to park cars. A paved driveway can add lots of personality by getting creative with layout patterns. Depending on the type of paving you choose, you can opt for anything from a "Stretcher Bond", which gives the classic uniform pattern, to "Herringbone" which brings a more distinctive pattern.



*Design the front of your house to welcome you home in style every day, for years to come.*



# Monksbridge

*A bridge to the look and style of yesteryear.*

Monksbridge is perfect for the driveways of traditionally styled properties. With its subtle hues and authentic weather worn appearance, this distinctive block paving adds the rustic flair of a bygone age. It's available in five shades, all of which come in a pack that includes four different sizes.



*Monksbridge block paving in Grey-Green with Woodland border, installed by Bradstone Assured landscaper Evans Innovation Landscaping – [www.evansinnovationlandscaping.co.uk](http://www.evansinnovationlandscaping.co.uk)*



Cinder (Cin)



Royale (Roy)



Croft (Cro)



Woodland (Wo)



Grey-Green (GG)



*Monksbridge block paving in Woodland, installed by Bradstone Assured landscaper Down To Earth – [www.gardensupplieeswindon.co.uk](http://www.gardensupplieeswindon.co.uk)*



# Driveway

*Real kerb appeal at an appealing price.*

Driveway is a stylish block paving which adds visual appeal to any driveway. It's as easy on the eye as it is on the pocket, combining affordability with exceptional durability making it perfect for driveways as well as patios and paths. Available in seven different colours and in one size.



Autumn (Au)



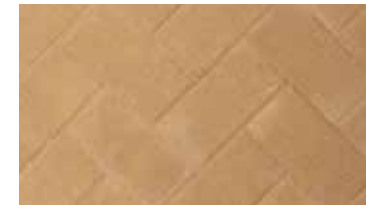
Burnt Oker (BO)



Brindle (Bd)



Charcoal (Ch)



Buff (Bf)



Red (Rd)



Grey (Gy)



Technical information



Driveway block paving in Autumn



# Driveway Infilta

*The driveway that drains as it rains.*

Driveway Infilta is both stylish and practical. It's laid as part of a permeable solution, any water that lands on it simply drains away between the blocks, stopping surface water from collecting. It is specially designed to show an authentic block driveway. Importantly, this satisfies all the stringent legislation regarding front driveways. Go to [bradstone.com](http://bradstone.com) for more information.

To complete the Infilta system see our range of Block Paving Fixing Products on page 109.



Driveway Infilta block paving in Charcoal



Autumn (Au)



Brindle (Bd)



Red (Rd)



Charcoal (Ch)



Technical information



Lumley Cobble block paving in Stone



# Lumley Cobble

*Capture the spirit of a bygone age.*

Lumley Cobble is the ideal way to give your driveway traditional charm. This beautiful cobble effect block paving is equally at home in the town or countryside. Available as a mixed pack featuring eight different sized cobbles which you mix to create the perfect look.



Stone (Stn)

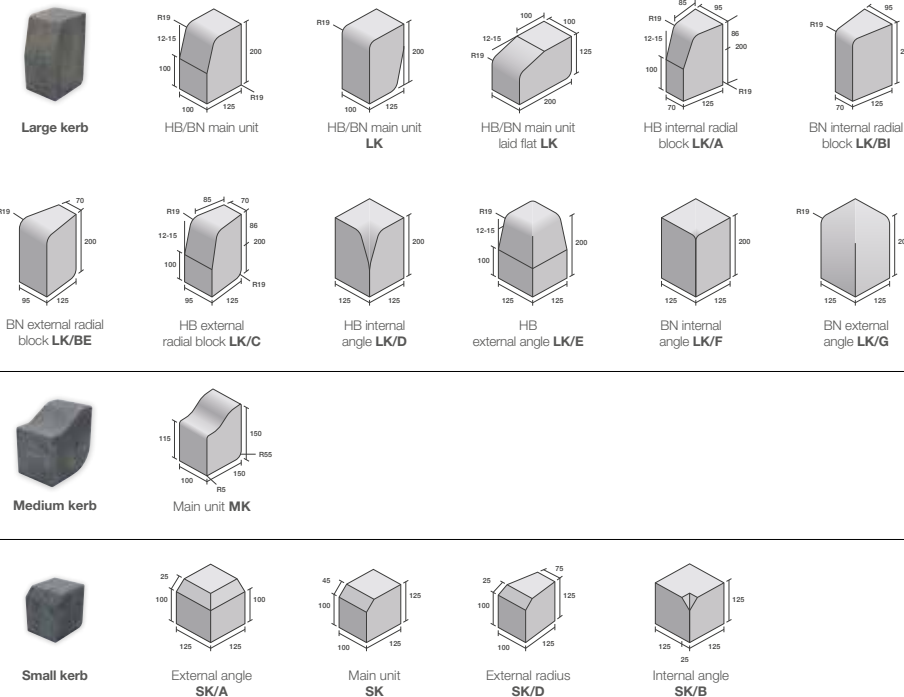


# Kerbs

*The perfect finishing touch for block paving.*

Kerbs are a great way to complete the look of your driveway, patio or path. Effortlessly combining style and practicality, while perfectly complementing any block paving and preventing vehicular overrun. Available in large, medium and small sizes, the range comes in a variety of shades to complement or contrast your driveway.

Kerb accessories are available in Brindle and Charcoal in large and small sizes. Rumbled kerbs are also available in large size to complement our Woburn Rumbled paving in 3 shades.



# Installation solutions

## Bradbond® Slurry Primer

Bradbond is a cementitious slurry primer that can be used on any paving product to help strengthen the bond between the paving and the sub-base onto which the patio is being laid. The British Standard recommends that a slurry primer should be applied to the underside of all paving prior to laying to improve adhesion to the mortar bed. Bradbond is so easy to use. You simply add water (refer to tub instructions) to the already blended mixture that comes in the tub and apply it with a brush to the back of each slab before you lay them. One 17kg tub will cover a nominal 12.75m<sup>2</sup> of paving, when applied with a thickness of 3mm.



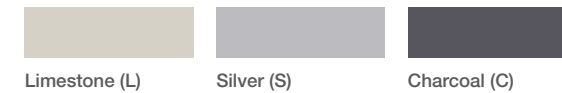
## Bradbond® Walling Adhesive

Bradbond walling adhesive is a flexible cladding adhesive for external floor and wall applications. It's specially formulated to make it easy to work with when fixing brick slips and natural stone to a range of substrates including sand/cement render, brick or block work. Simply mix 4.42 litres of clean water with each 17kg tub and apply 1m<sup>2</sup> at a time to a thickness of 3-20mm before leaving for 16 hours to set.



## ProGrout Flexible

ProGrout Flexible is an exterior tile grout with increased flexibility, providing a stronger, virtually impermeable set for your patio. It's suitable for joints from 1-20mm and a depth of up to 20mm. Each tub contains 9kg.



## Infilta Installation solutions

High performance open graded aggregates specifically designed to provide controlled water management within Sustainable Drainage Systems (SuDS).



Superflow Drainage Agg    Superflow Bedding Aggregate    Superflow Joint Agg

# Landscaping Features

*Finishing touches that make all the difference*

Your perfect garden has your own distinctive stamp on it and Bradstone gives you the opportunity to create the finish of your dreams.

Steps .....	112
Walling .....	114
Setts .....	122
Edging .....	124
Stepping Stones.....	129

Prestige Walling Slips in Cognac







# Steps

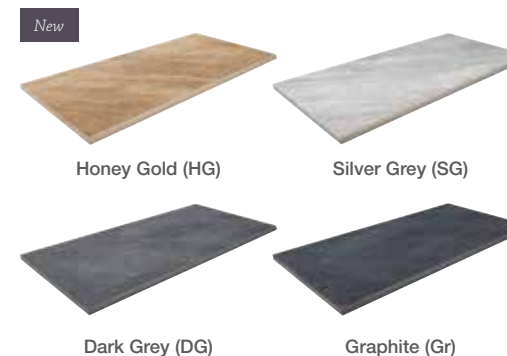
*Practicality and elegance combined.*

Our selection of steps are designed to finish off your outdoor space with a beautiful, consistent look. You can make a real statement with a stairway of grand proportions or complete your patio with a simple coordinated set of steps.

Mode Profiled Steps in Silver Grey

## Mode® Profiled Steps

Mode Profiled Steps are the ideal partner for our Mode Profiled range. They can also be used in all other ranges in our porcelain collection as a contrast to enhance the garden design.



Mode Profiled Steps in Dark Grey

## Smooth Natural Sandstone Steps

Create a stairway that delights with every step. Our Smooth Natural Sandstone Steps are lightly textured to complement our natural sandstone collection.

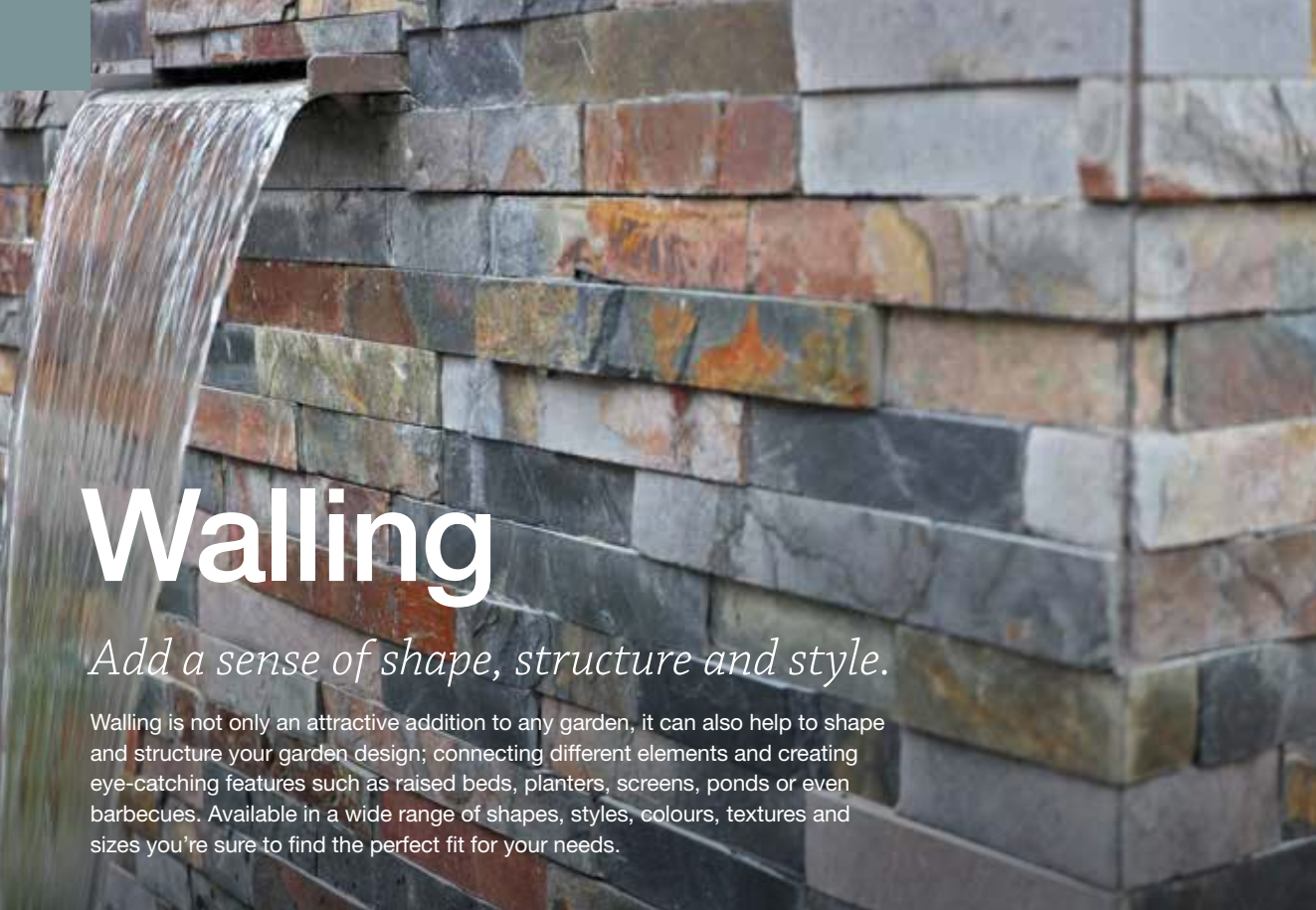


Universal Steps in Buff

## Universal Steps

Make your outside space stunningly seamless with our ceramic Universal Steps. Choose from three colours that'll complement all types of paving. Also, they're available in both straight and corner step units and come with a handy paver to create a step riser or to make a step deeper.



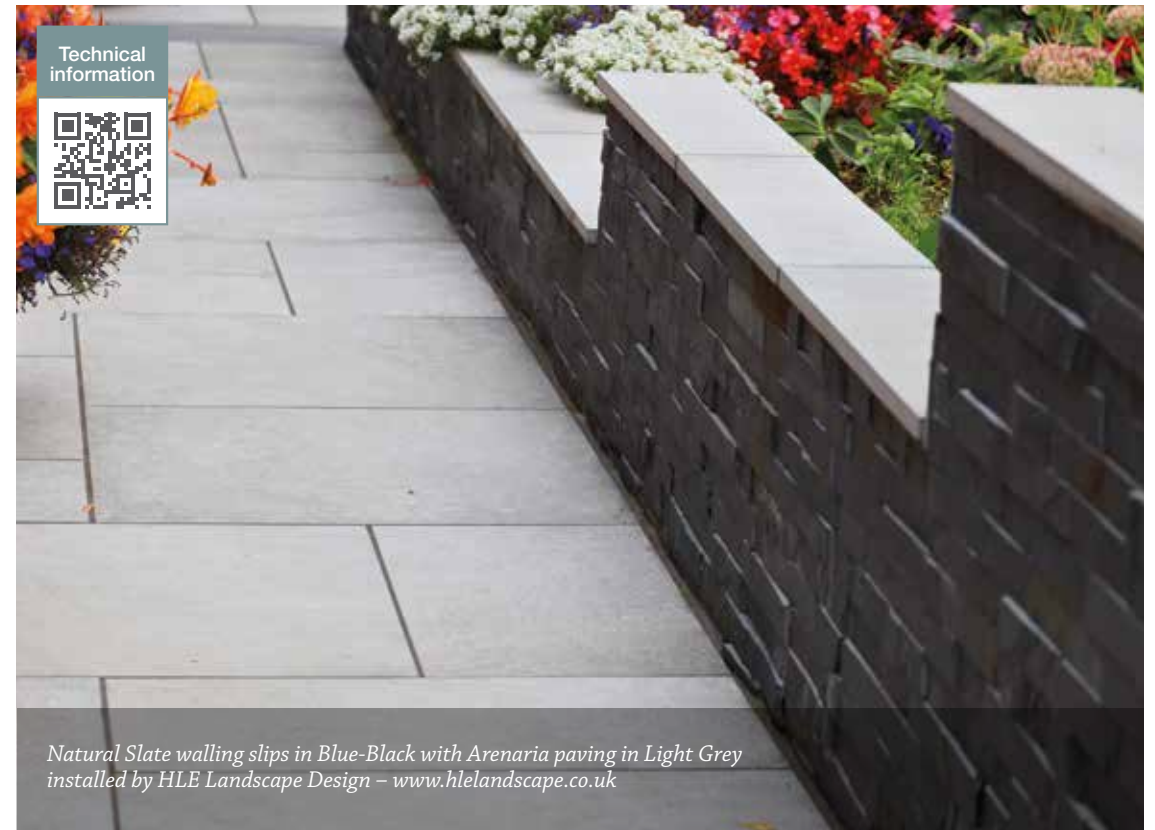


# Walling

*Add a sense of shape, structure and style.*

Walling is not only an attractive addition to any garden, it can also help to shape and structure your garden design; connecting different elements and creating eye-catching features such as raised beds, planters, screens, ponds or even barbecues. Available in a wide range of shapes, styles, colours, textures and sizes you're sure to find the perfect fit for your needs.

Natural Slate walling slips in Rustic Gold



Natural Slate walling slips in Blue-Black with Arenaria paving in Light Grey installed by HLE Landscape Design – [www.hlelandscape.co.uk](http://www.hlelandscape.co.uk)



ECO Stack ECO Walling in Anthracite



## Easy Stack™ eco Walling

This contemporary style hollow walling unit is extremely versatile. For a dry laid effect the unit can be filled with concrete to create a stable base for a feature wall. This walling can also be laid as a planter, simply infill with soil up to a maximum height of 600mm to create a stunning border for your planters.



Anthracite full block (An)



Anthracite full coping (An)



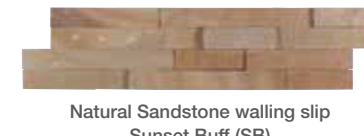
Anthracite half coping (An)

## Natural Stone Walling Slips

This range of walling slips comes in Natural Slate and Natural Sandstone with a set of complementary shades. For a superb natural stone look, they just stick to a block wall using Bradbond walling adhesive. The slips are Z-shaped giving the appearance a random look. Natural Stone or Porcelain is ideal as complementary coping for these walls.



Natural Sandstone walling slip  
Fossil Buff (FB)



Natural Sandstone walling slip  
Sunset Buff (SB)



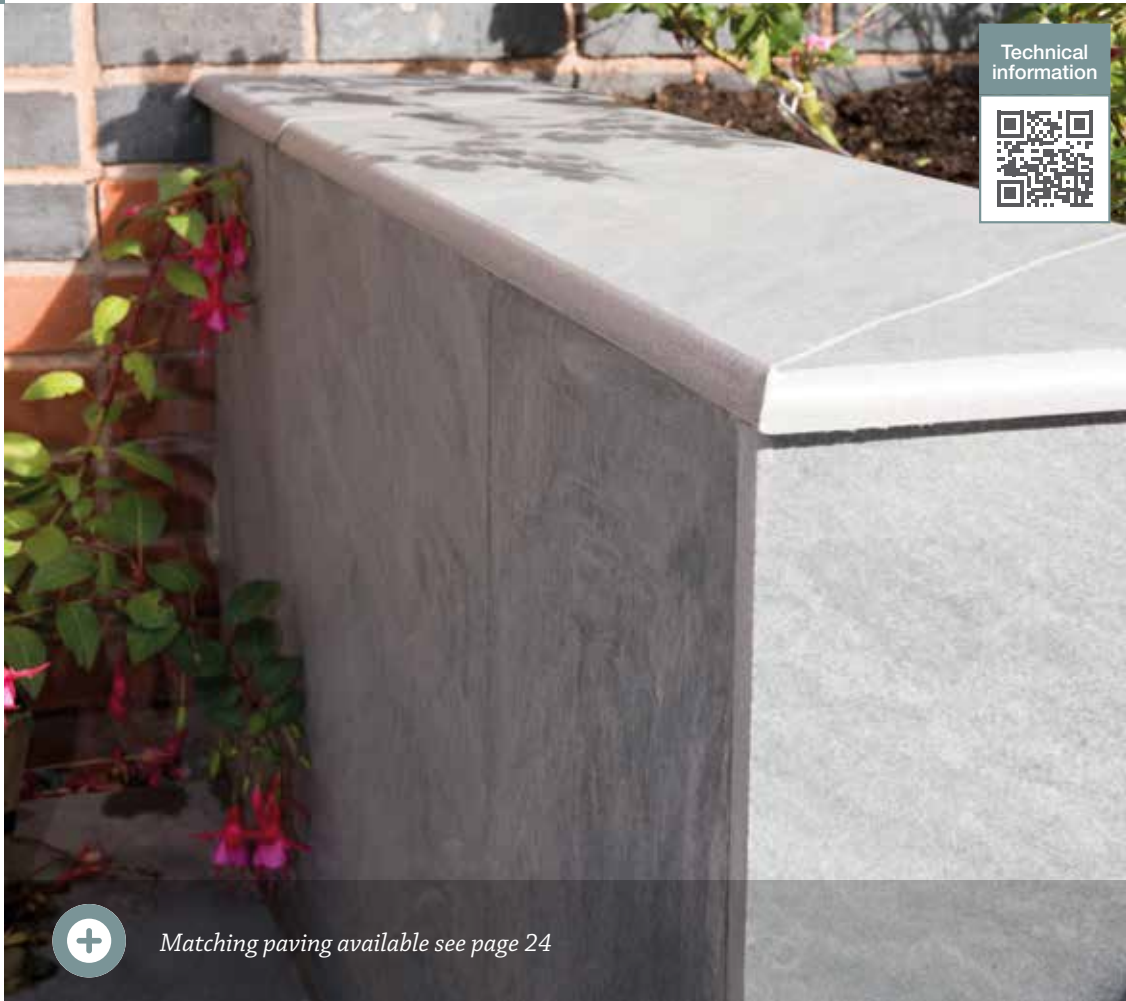
Natural Sandstone walling slip  
Silver Grey (SG)



Natural Slate walling slip  
Blue-Black (BB)



Natural Slate walling slip  
Rustic Gold (RG)



Matching paving available see page 24

Mode Profiled Coping in Silver Grey

## Mode<sup>®</sup> Profiled Coping

Available in four shades, this coping is ideal to complement or contrast porcelain paving, depending upon the look you desire.



Honey Gold (HG)



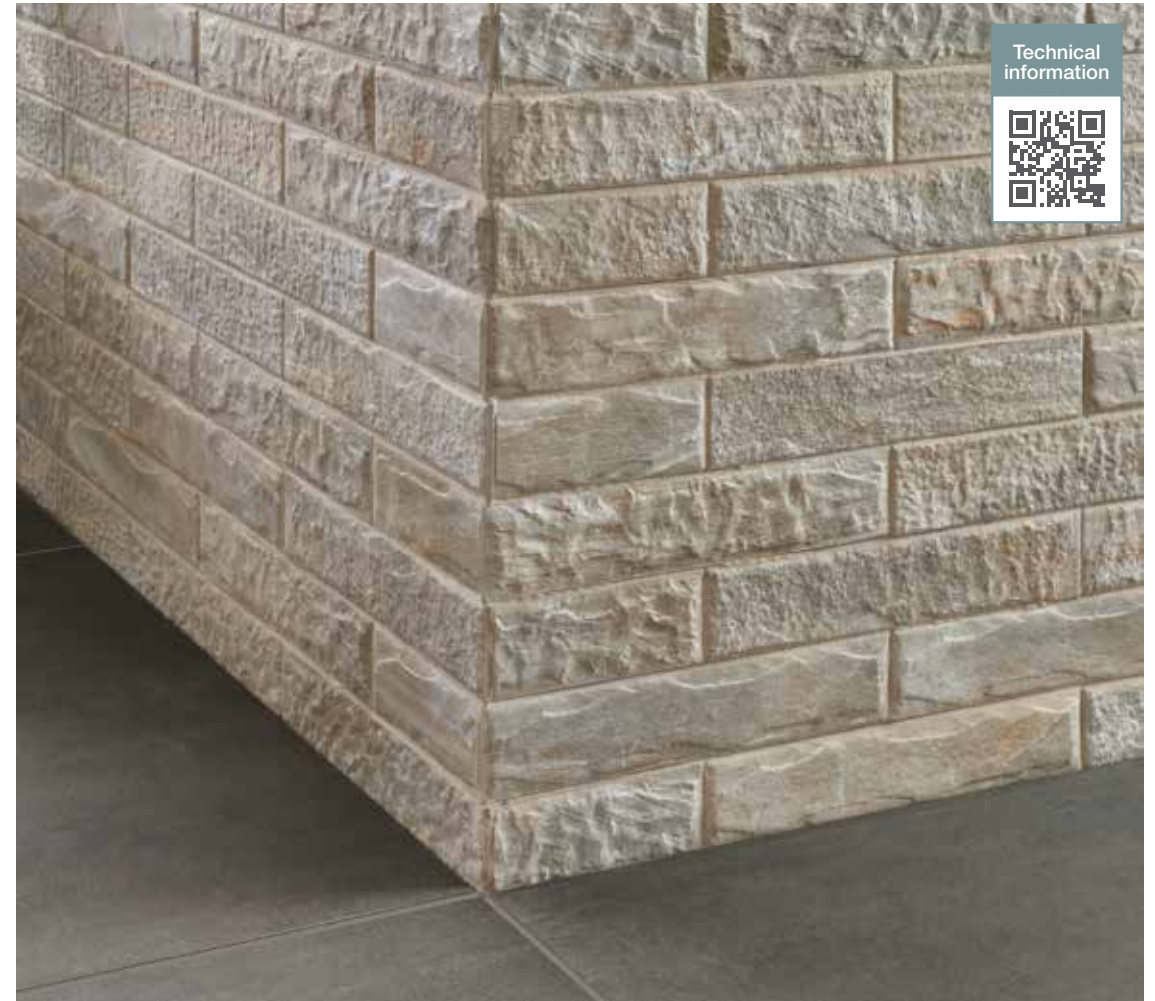
Dark Grey (DG)



Silver Grey (SG)



Graphite (Gr)



Prestige Walling Slips in Cognac

## Prestige Walling Slips

Designed to complement our range of paving, our porcelain walling brick slips provide an exquisite finishing touch to any garden. The slips are individual pieces in a choice of two shades that complement our paving ranges, giving a superb natural stone look. They should be applied to a suitable base with our Bradbond Walling Adhesive.



Cognac (C)



Gris (Gr)



## Old Town<sup>®</sup> eco<sup>™</sup> Walling

This single block of reclaimed Yorkstone profile walling gives the effect of a number of smaller blocks that work perfectly with Old Town paving. The false joints can be mortared for an even more realistic finish.



Grey-Green (GG)



Weathered Limestone (WL)



Grey-Green (GG)



Weathered Limestone (WL)



Matching paving available see page 60

Old Town ECO Walling in Weathered Limestone

## Natural Sandstone Walling

A perfect complement to Natural Sandstone paving, these fully rumbled, double-sided blocks are easy to use for both straight and curved walls. Also ideal for step risers, fire pits or barbecues.



Fossil Buff (FB)



Silver Grey (SG)



Fossil Buff coping (FB)



Matching paving available see page 52

Natural Sandstone Walling in Fossil Buff



Technical information



Technical information



## Madoc eco<sup>™</sup> Walling

This single block of slate profile walling gives the effect of separate slate pieces laid together. Unique Z-shaped blocks make it easy to build walls and planters.



Weathered Cotswold full block (WcT)



Weathered Cotswold sneck (WcT)



Weathered Cotswold coping (WcT)

Madoc ECO Walling in Weathered Cotswold



## Old Riven eco<sup>™</sup> Walling

This pitched effect block is perfect for either straight or curved walls. Available in two shades and a mixed size pack.



Autumn Cotswold (AC)



Autumn Silver (AS)



Technical information



Matching paving available see page 64

Old Riven ECO Walling in Autumn Silver



## Countrystone® Walling

This fully rumbled product – available in three sizes – has been designed to complement traditional style paving.



Buff (Bf)

Countrystone Walling in Buff



## Pitched Walling

These pitched single blocks can be used to easily build both straight and curved walls. It is available in three sizes and two shades and is designed for use with Textured Coping.



Buff (Bf)



Grey (Gy)

Pitched Walling in Buff



## Textured Coping

This coping works perfectly together with Countrystone and Pitched Walling. Also ideal for use as a stepping stone or long aspect paver.



Buff (Bf)



Grey (Gy)



Matching paving available see page 86

Textured Coping in Grey



## Screenwall Walling

This double-sided block is mainly used to renovate existing walling. The Saddleback Coping and Pyramid pier caps complement Screenwall or brick walls perfectly, and come in two sizes.



(Leaf block)  
Off-White (OW)



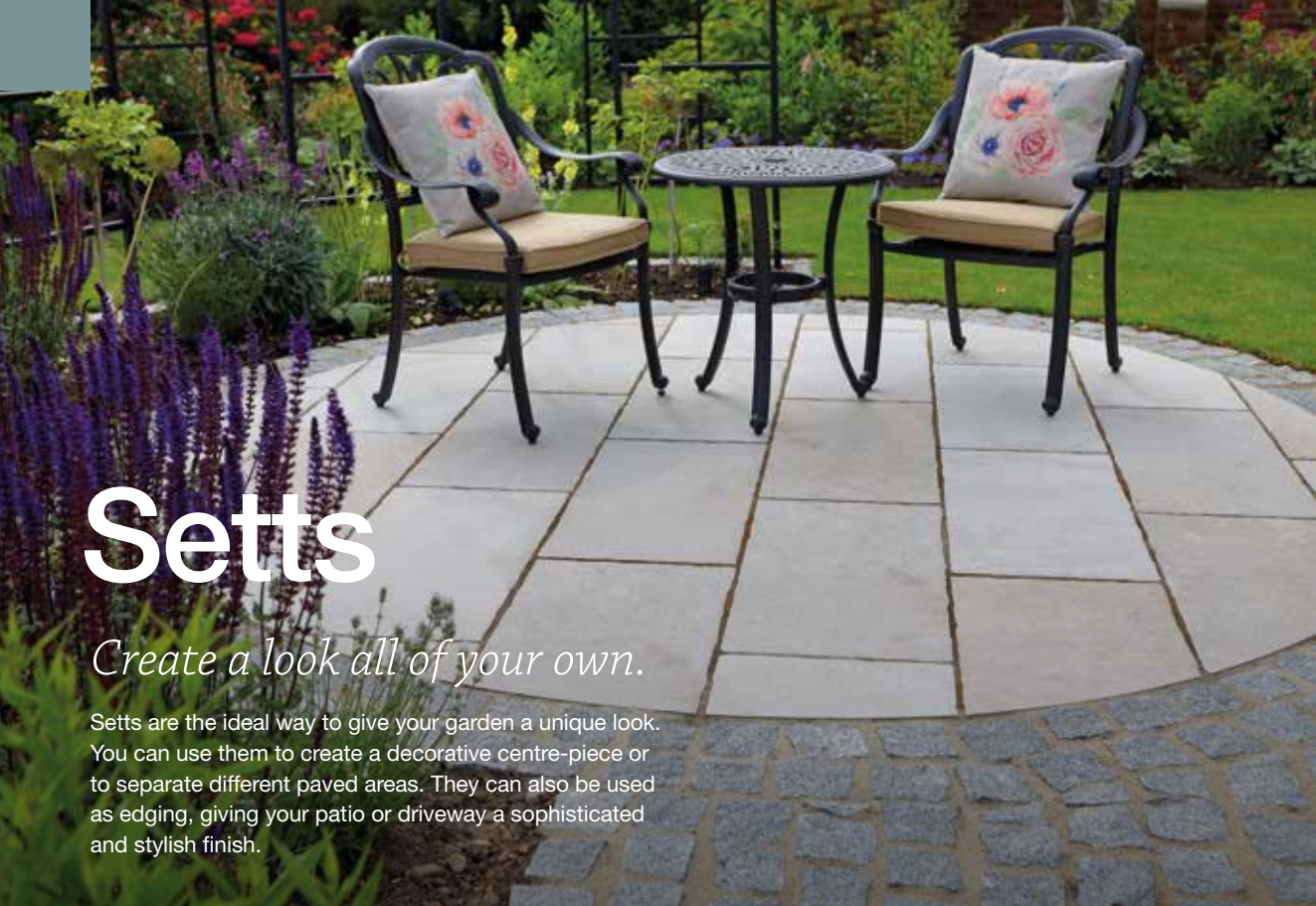
(Pyramid pier cap)  
Off-White (OW)



(Saddleback coping)  
Off-White (OW)



Screenwall Walling in Off-White



# Setts

*Create a look all of your own.*

Setts are the ideal way to give your garden a unique look. You can use them to create a decorative centre-piece or to separate different paved areas. They can also be used as edging, giving your patio or driveway a sophisticated and stylish finish.

Natural Granite Setts in Silver Grey



Silver Grey (Split all sides) setts and Romeli Buff Blend paving installed by Bradstone Assured installer P B Landscapes of Melbourne – [www.pblandscapes.co.uk](http://www.pblandscapes.co.uk)



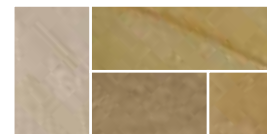
Natural Sandstone Setts in Autumn Green

## Natural Sandstone Setts

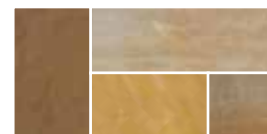
A range of setts that can be used to add detailed areas to a patio or used as a flat edging.



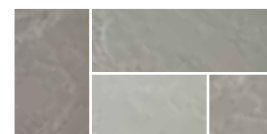
Fossil Buff (FB)



Autumn Green (AGr)



Sunset Buff (SB)



Silver Grey (SG)

## Natural Granite Setts

Ethically sourced from our global suppliers, our range of granite setts are great for adding feature areas such as paths or borders.



Silver Grey (SG)  
(Split all sides)



Dark Grey (DG)  
(Sawn, flamed and tumbled)



Silver Grey (SG)  
(Sawn and flamed)

*Assured  
Landscape  
Top Tip*



"Let your creativity run free with Setts. Incorporate as much or as little of a design to bring your ideas to life."

Paul Bignall  
Bradstone Assured Landscaper



# Edging

*The definition of stylish borders.*

Edging is a great way to define borders and herbaceous beds to make a real design statement. With our comprehensive choice of styles in both natural stone and concrete, you can perfectly coordinate your edging with many of our paving options.

Old Town ECO Edging in Grey-Green



Mode® Profiled Edging in Silver Grey

## Mode® Profiled Edging

An ideal finish to your porcelain patio, available in four shades. Perfectly complements Mode Profiled paving but can be used with all of our porcelain range to complete your garden project.



Honey Gold (HG)



Silver Grey (SG)



Dark Grey (DG)



Graphite (Gr)



## Rustic Rope Top eco Edging

Available in three distinctive and attractive colours, this traditional-style Rope Top edging has matching corners which make it easy to change direction.



Fossil Buff (FB)



Fossil Buff (FB)



Fossil Buff (FB)



Dollies Left to right:  
Antique Red (AR),  
Cotswold (Ct),  
Old Granite (OG)



Old Town ECO Edging in Grey-Green

## Natural Sandstone Edging

This versatile riven profile can be used as both edging and coping for walling. It beautifully complements Natural Sandstone paving.



Fossil Buff (FB)



Rustic Rope Top ECO Edging in Fossil Buff



## Old Town® eco Edging

This traditional round top edging has a pleasantly weathered Yorkstone-effect profile. It complements Old Town paving and walling.



Grey-Green (GG)



Weathered Limestone (WL)



Natural Sandstone Edging in Fossil Buff



## ECO Countryside Edging

With a distinctive and stylish black fleck shade which closely resembles natural granite, this environmentally-friendly edging has up to 45% recycled or reclaimed material.



Black Fleck (BF)

ECO Countryside Edging in Black Fleck



## Old Riven eco Edging

Each single piece of this stone on-end edging looks like ten pieces. It can also be used as coping to create a new and strikingly different effect.



Autumn Silver (AS)



Autumn Cotswold (AC)

Old Riven ECO Edging in Autumn Silver



## Stonewood® eco Edging

These rugged, rustic wood-effect sleepers have weathered, authentic profiles and are available in three sizes.



Antique Brown (AB)



Antique Brown (AB)



Antique Brown (AB)



Stonewood ECO Edging in Antique Brown



## Textured Edging

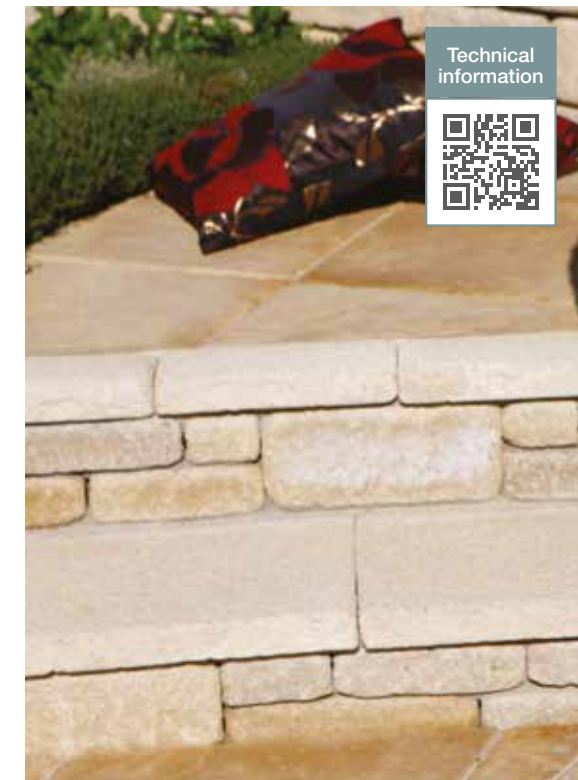
Available in two subtle and elegant shades, this medium textured edging beautifully complements Textured paving.



Buff (Bf)



Grey (Gy)



Textured Edging in Buff





Technical information



## Scalloped Edging

Just the job when budgets are tight, this edging offers excellent value for money.



Buff (Bf)



Red (Rd)



Grey (Gy)

Scalloped Edging in Buff



## Round Top Edging

A great value edging which comes in attractive Buff, Grey and Dark Grey colour options.



Buff (Bf)



Dark Grey (DG)



Grey (Gy)



Technical information



Round Top Edging in Grey

# Stepping Stones

*Step this way for a delightful garden feature*

Stepping stones are a charming feature in any garden. Set in lawns and gravel or even in borders interspersed with planting, they offer a practical way to walk about your garden, add interest and character.

Technical information



Round stepping stones in Cream Blend



### Natural Sandstone Stepping Stone



Natural Sandstone stepping stone Fossil Buff (FB)

### Stonewood® Stepping Stone



Stonewood® stepping stone Antique Brown (AB)

### Natural Limestone Stepping Stone



Natural Limestone stepping stone Blue-Black (BB)



### Random Stepping Stone



Random stepping stone Weathered Brown (WB)



Random stepping stone Weathered Grey (WG)



### Round Stepping Stone



Round stepping stone Brown Blend (BrB)



Round stepping stone Cream Blend (CrB)

# Additional landscaping materials

*As part of the Aggregate Industries group, we can also offer ready-mixed concrete and asphalt surfacing materials for your garden or driveway project.*

If you're looking for concrete for a shed base, a garden path or for the foundations of your garden walls then our concrete service can deliver direct to your door. Simply visit [aggregate.com](http://aggregate.com) and we can help guide you to the right concrete mix and help you calculate how much concrete you will need.

If you're thinking of asking your landscaper to install an asphalt driveway or pathway then our **Express Asphalt** service offers them collection locations across the country. All our plants offer service guarantees that mean your landscaper will receive the most reliable service the industry has to offer.



*For more information or advice on our concrete services, please call **0345 939 0014**. For asphalt enquiries please call **08450 757 799** or simply visit [www.aggregate.com](http://www.aggregate.com)*

## *Additional information*

### **Product Images**

The designs shown in the brochure are for illustrative purposes only. Every effort is made to ensure the accuracy of all content in this guide, however due to varying light conditions it is not always possible to show the true colours of products in a photograph. Before ordering please always view a sample of current stock. You can do this in several ways: By ordering a **FREE** sample from [bradstone.com](http://bradstone.com) or by calling **01335 372289** or by visiting a display at your local stockist (to find your nearest stockist visit [bradstone.com](http://bradstone.com))

### **Cost**

You can find prices at [bradstone.com](http://bradstone.com) or your local stockist who will be able to advise on the price of paving. Please be aware that paving is just one element of the total cost and is rarely the largest outlay. It's usually about 20% of the cost of the whole project.

### **Sizes and joint widths**

Size dimensions quoted within this brochure are nominal and for guidance only. Actual sizes will vary, particularly where riven profiles and fettled edges are a feature of the product. Always dry lay the product to check area required (especially circles and patio kits). See joint widths recommended for products in the technical information. All m<sup>2</sup> coverage is approximate and may vary. All our products are manufactured to industry standard tolerances.

### **General information**

Bradstone products that are British made are indicated with a British flag icon.

Bradstone products and materials, unless otherwise stated, are for domestic landscaping and driveway projects.

Decorative flag paving and some edgings are not recommended for use on driveways. All products must be checked on arrival and in the unlikely event of products reaching you in a less than satisfactory condition, please refer to your stockist immediately, allowing time for the rejected product to be replaced.

When you receive your product you may notice minor scuffing on the surface. This can occur due to movement in transit and will generally disappear in time. De-icing salts should not be used on any of the Bradstone product range. Bradstone does not recommend the use of jet/ power washers as this may affect the surface of the product over time.

All products can develop algae and organic growths under certain environmental conditions and may require cleaning. Areas adjacent to borders, plant pots and trees may discolour from transfer of plant life; specialist maintenance advice may need to be sought.

For advice on cleaning and general maintenance of your patio please refer to our website.

Aggregate Industries cannot accept responsibility for any

of the above conditions. Should you require further advice in this area call our customer care team on **01335 372289**.

### **Health and safety**

Due to the nature of our products we always recommend suitable lifting equipment be used for larger products such as 1200 x 600mm and 900 x 900mm pavers. We recommend the use of lifting equipment such as a vacuum lift.

- Always wear gloves and safety footwear when handling the product.
- Always wear safety goggles, safety footwear, gloves, ear protection and appropriate respiratory protection when using cutting equipment.
- Ensure the products are on level ground and retained in some way before removing any packaging.
- Always handle with care as breakage and chipping may result from mishandling.

### **Order Choice**

The Bradstone Order Choice service means that at an additional cost you can order certain products from any Bradstone stockist, even if they do not actually stock that particular product. Simply ask your stockist.

**Please note:** We do not split patio feature kits.

### **Bradstone Assured terms and conditions**

Bradstone Assured landscapers are subject to regular quality checks and assessments and are required to abide by the Bradstone Assured terms and conditions of membership at all times. Bradstone offers a 10 year guarantee on all Bradstone products Installed by Bradstone Assured landscapers with the exception of Peak and a 5 year guarantee on the installation of Bradstone products by a Bradstone Assured landscaper for a reasonable domestic use.

All guarantees are subject to a completed card being returned to the Bradstone offices and a certificate having been issued. Terms and conditions apply please see our website for more details.

Each Bradstone Assured landscaper is directly responsible for the management of the relationship with their customers and any enquiries. Please note that the resulting legal contract is between you and the Bradstone Assured landscaper and is subject to the terms and conditions of that member. They will advise you of these conditions themselves.

You should carefully review their terms and conditions applying to the purchase of your products and/or services. Claims or suggestions should be addressed directly to the Bradstone Assured landscaper providing the relevant products or services.

**Please note:** Pointing materials are not covered in the Bradstone Assured Guarantee.

# Key product information

## Block paving

Colour variations can occur within packs, therefore:

Ensure your sample and blocks are from the same factory. Block paving should be ordered from the same batch number to avoid colour variation. Do not mix blocks from different factories. Bradstone cannot accept responsibility once blocks are laid from different batches. The responsibility of ensuring this is correct lies with the landscaper. Best results are achieved through mixing from 3 to 5 different packs and from vertical columns rather than horizontal rows.

We recommend a neoprene faced or rubber sole plate on vibrating plate compactors to reduce scuffing (specifically on our StoneMaster, BradDrive Cobblestone ECO and Woburn Original ranges). Light colours are susceptible to staining and care should be given when selecting blocks for driveways.

## Slurry Primer

The British Standard recommends that a slurry primer (such as Bradbond) should be applied to the underside of all paving prior to laying to improve adhesion.

## Natural stone colour and maintenance

All natural stone products (Sandstone, Limestone, Slate and Granite) will have colour and texture variation to a greater or lesser extent within single pieces and from piece to piece.

We recommend a reasonable amount of product is viewed at your local stockist before ordering. Natural stone products may contain minor imperfections. These will depend on the characteristics of the product i.e. fossils, ferns, veining and quartz. Natural stone may develop added marking, deposits or patches as mineral content oxidises.

Product should be mixed from a number of packs prior to installation. Natural stone should always be laid on a full wet mortar bed.

A slurry primer (such as Bradbond) is recommended to be applied to the underside of all Natural Stone paving but is essential for Smooth Natural Sandstone, Natural Slate and Granite paving prior to laying to improve adhesion.

## Sandstone

Sandstone needs to be handled very carefully when installing to minimise staining and we would advise that Smooth Natural Sandstone be sealed prior to laying using a breathable sealer. However, if this is not possible, it should be covered up as it is installed and sealed as soon as it is laid.

The Silver Grey colour in all of our Natural stone products will vary with differing geological conditions. Such variations can lead to small particles of ironstone within the product creating a darkening of the surface with natural weathering. Being pale in colouration, this natural

weathering is more obvious with Silver Grey compared to other natural products in the Bradstone range.

## Slate

Slate has many natural characteristics. Therefore, care should be taken when laying to aid/enhance the overall finished aesthetic appearance. In most cases this paving has more than one usable face, we strongly recommend the following checks be made:

- Select the best finished top surface to work with ensuring it is free from calcite mineral deposits (circular white marks).
- Dry lay the paving prior to final installation/fixing to ensure the desired shade variation is achieved throughout the patio area.
- A slurry primer (such as Bradbond) should be applied to the underside of Slate paving prior to laying to improve adhesion.
- Do not use acidic based products during or after installation.
- Natural Slate is not suitable for steps and copings.

## Natural Granite

A slurry primer (such as Bradbond) should be applied to the underside of Granite paving prior to laying to improve adhesion.

Do not use a resin based jointing compound with Granite.

## Limestone

Indian Blue/Black Limestone is UV sensitive and over time will lighten in colour. We do recommend sealing limestone prior to laying, or as soon after laying when practically possible. Combined colour enhancers and sealers are available that will help keep the look for longer. Never use acidic based products during or after installation.

## Porcelain paving

Manufactured from the finest raw materials, under strict controls allows us to obtain the exceptional technical characteristics which sets porcelain paving apart.

## Anti-slip surface resistance

- Madera Antigua = R12
- All other porcelain paving = R11

We recommend Progrout Flexible for pointing. Do not use white cement nor materials containing black pigments. Finishes are intentionally manufactured with slightly uneven colour tones and surface decoration, these subtle variations set these products apart.

The use of a slurry primer to the reverse of each paver is both essential and more importantly critical to the overall performance of Bradstone porcelain paving.

We recommend the use of Bradstone Bradbond for this. Apply as per instructions given on the tub. Applied to the underside using a stiff brush, it provides an exceptional bond between paver and the full wet bed underneath. Mixed to manufacturer's instructions and applied with care it forms an immediate bond which prevents the pavers from lifting or potentially moving in the future when correctly laid.

Bradstone porcelain paving can be cut on site and mostly to any size. We recommend the use of a portable saw (table saw, petrol driven disc cutter, rechargeable angle grinder) fitted with a good quality diamond porcelain blade. The blade should be water fed for dust suppression and to keep the blade cool. Scoring the product first and sawing from the face downwards will help to alleviate the potential risk of edge/surface chipping. There is a porcelain laying guide on bradstone.com.

Bradstone porcelain paving can be cleaned by applying a suitable cleaner. We strongly recommend the finished laid area be thoroughly cleaned/washed down which helps remove general building dirt, grout residue and any grease deposits that may be present. It is also recommended that periodic cleaning with a porcelain cleaner will help to keep the paving looking its best.

Dependent on the type of stain/surface residue present (i.e. suction marks, grease, grout, general building site dirt,) there is a wide range of off the shelf specialist cleaners available. Always check the manufacturer's instructions first before applying to any test area.

Rectified paving is intentionally produced slightly oversize, then cut or ground on all 4 sides to very precise tolerances.

## Concrete colour and maintenance

Colours may vary subtly, especially in blended shades. Colours will appear different during varying weather conditions such as sunlight and rain. Please check colour samples in dry conditions and in full daylight. Where possible, products should be selected from the same product batch. Our Peak paving should not be used for patios or areas where aesthetics are important.

## Differential Weathering

Differential weathering can cause patchy dark discolourations on the surface of individual units. Again this will generally diminish over time and will not affect long term performance. This is due to differential weathering where the surface of the paving has cured at different rates. All decorative products will weather and change appearance over time.

## Efflorescence

Efflorescence can appear on all paving products as white patches or a lightening of the surface colour, but seems

to disappear when wet. It is formed by a normal chemical reaction which causes calcium hydroxide (lime) to migrate through the damp paving surface and then react with carbon dioxide in the atmosphere resulting in a deposit of calcium carbonate crystals. Efflorescence is very unpredictable in its occurrence and can happen at any time of the year but is more prevalent in winter.

Although there are cleaners available, efflorescence is a natural phenomenon and will generally disappear with the natural weathering process and the passage of time. It does not compromise the integrity of the paving. Aggregate Industries cannot accept responsibility for the effect of efflorescence which can be a characteristic of all good quality products with a high cement content. For more information visit bradstone.com

## Bradstone information

Bradstone reserves the right to alter specifications without prior notice. All products and services shown in this brochure are supplied subject to Aggregate Industries UK Ltd terms and conditions of sale.

No charge is levied for this brochure or the advice therein, and accordingly the company, its employees and authorised agents can accept no liability whatsoever, either directly or indirectly arising from the use of its products in connection with any information or advice contained in this guide.

Bradstone is part of Aggregate Industries UK Ltd. Aggregate Industries is the first company in the world to achieve a BES 6001:2008 Responsible Sourcing Certificate from BRE Global. Products are assessed on:

- Quality management
- Environmental management
- Health and safety management
- Greenhouse gas emissions
- Minimising raw material usage
- Labour practice
- Biodiversity
- Community engagement.

All Bradstone's manufacturing facilities are covered by BS EN ISO 9001 certification for product quality and service. Bradstone block paving products are also manufactured to, and in accordance with, BS EN 1338.

Each of the Bradstone manufacturing locations is certified to ISO 14001 for environmental management systems and 18001 for occupational health and safety. All dimensions quoted in this brochure are nominal and are for guidance only. Actual sizes may vary. Our products also conform to European harmonised standards for CE marking.

## Find out what sizes your paving comes in

Type	Range	Colour	300x300	400x400	450x300	450x450	600x300
ECO paving	Old Town ECO evolve	SG	-	-	-	-	-
ECO paving	Old Town ECO	GG,WL,OQ	✓	-	-	-	✓
ECO paving	Old Riven ECO	AC,AS	✓	-	-	-	✓
ECO paving	Old Riven ECO	AG, AB	✓	-	-	-	✓
ECO paving	Aged Riven ECO	DG	-	-	✓	-	-
ECO paving	Ashbourne ECO	Ct, YB, YG, WG	-	-	-	-	-
ECO paving	Edale ECO	Cr, Gy, DG	-	-	-	✓	-
Concrete paving	Carpet Stones	Ch, RR	-	-	-	-	-
Concrete paving	StoneMaster	LG, MG, DG	-	-	-	-	-
Concrete paving	Panache Ground	SG, MG	-	-	-	✓	-
Concrete paving	Mahina	Na, DG, Bf, Ch	-	-	-	✓	-
Concrete paving	Textured	DG, Gy, Bf, Rd	-	-	-	✓	-
Utility paving	Peak Riven	Bf, N, Rd, DG	-	-	-	✓	-
Utility paving	Peak Smooth	Bf, N	-	✓	-	✓	-
Natural Stone Ranges	Smooth Natural Sandstone	Du, R	-	-	-	-	-
Natural Stone Ranges	Natural Granite	SG	✓	-	-	-	✓
Natural Stone Ranges	Natural Slate	BB	-	-	-	-	✓
Natural Stone Ranges	Natural Slate	GG	-	-	-	-	-
Natural Stone Ranges	Natural Limestone	BB	-	-	-	-	✓
Natural Stone Ranges	Natural Limestone	Az	-	-	-	-	-
Natural Stone Ranges	Natural Sandstone	FB, AGr, SB, SG	✓	-	-	-	✓
Natural Stone Ranges	Blended Natural Sandstone	ImG, RG, RB, BU	-	-	-	-	-
Porcelain Collection	Serameno	FC,FB,FS	-	-	-	-	-
Porcelain Collection	Fiero	Si, Le, Br	-	-	-	-	-
Porcelain Collection	Romeli	BB,GB	-	-	-	-	-
Porcelain Collection	Mode Profiled	HG, DG, SG, Gr	✓	-	-	-	✓
Porcelain Collection	Vetusto	BB, Du	-	-	-	-	-
Porcelain Collection	Vetusto	RG	-	-	-	-	-
Porcelain Collection	Rock	SG	-	-	-	-	-
Porcelain Collection	Stylus	LG, DG	-	-	-	-	-
Porcelain Collection	Madera Antigua	Gy, Oa	-	-	-	-	-
Porcelain Collection	Arenaria	DG, LG, Cr	-	-	-	-	-
Porcelain Collection	Tatra	DG, LG, Bg	-	-	-	-	-

600x600	800x200	800x400	900x150	900x450	900x600	900x900	1000x500	1200x400	1200x600	Circle	Patio Pack
-	-	-	-	-	-	-	-	-	-	-	✓
✓	-	-	-	-	✓	-	-	-	-	✓	✓
✓	-	-	-	-	-	-	-	-	-	✓	✓
✓	-	-	-	-	-	-	-	-	-	-	✓
-	-	-	-	-	-	-	-	-	-	-	✓
-	-	-	-	-	-	-	-	-	-	-	✓
✓	-	-	-	-	-	-	-	-	-	-	-
-	-	-	-	-	-	-	-	✓	-	-	-
-	✓	-	-	-	-	-	-	-	-	-	-
-	-	-	-	-	-	-	-	-	-	-	-
✓	-	-	-	-	-	-	-	-	-	-	-
✓	-	-	-	-	-	-	-	-	-	-	-
-	-	-	-	-	-	-	-	-	-	-	✓
✓	-	-	-	-	-	✓	-	-	-	-	-
✓	-	-	-	-	-	-	-	-	-	-	✓
-	-	-	-	-	-	-	-	-	-	-	✓
✓	-	-	-	-	✓	-	-	-	-	-	✓
-	-	-	-	-	-	-	-	-	-	-	✓
✓	-	-	-	-	✓	-	-	-	-	✓	✓
-	-	-	-	-	✓	-	-	-	-	-	✓
-	-	-	-	-	-	-	✓	-	-	-	✓
✓	-	-	✓	✓	-	-	-	-	-	-	✓
-	-	-	-	-	✓	-	-	-	-	-	✓
-	-	-	-	-	-	-	-	-	-	-	✓
✓	-	-	-	-	-	-	-	-	✓	-	-
-	-	-	✓	-	-	-	-	-	-	-	-
-	-	-	-	-	-	-	-	-	-	-	✓
✓	-	-	-	-	✓	-	-	-	✓	-	-

*Find out what sizes your driveway block paving comes in*

Type	Range	Colour	Mixed Sizes	300x100	200x134
Driveway Block paving	BradDrive Cobblestone ECO	Br, Gy, An	✓	-	-
Driveway Block paving	StoneMaster	DG, MG, LG	✓	✓	-
Driveway Block paving	Woburn Rumbled	Au, Ru, Bd, Gr	-	-	✓
Driveway Block paving	Woburn Rumbled Kerb	Au, Ru, Gr	-	-	-
Driveway Block paving	Woburn Rumbled Infilta	Au, Gr, Ru	-	-	✓
Driveway Block paving	Woburn Original	Au, Gr, Ru	-	-	✓
Driveway Block paving	Monksbridge	Cin, Roy, Cro, Wo, GG	✓	-	-
Driveway Block paving	Lumley Cobble	Stn	✓	-	-
Driveway Block paving	Driveway	Au, BO, Bd, Ch, Bf, Rd, Gy	-	-	-
Driveway Block paving	Driveway Infilta	Au, Bd, Rd, Ch	-	-	-
Driveway Block paving	Kerb	Bd, Ch	-	-	-

	200x125	200x100	150x150	134x134	125x125	100x134
	-	-	-	-	-	-
	-	-	-	-	-	-
	-	-	-	✓	-	✓
	✓	-	-	-	-	-
	-	-	-	✓	-	✓
	-	-	-	✓	-	✓
	-	-	-	-	-	-
	-	-	-	-	-	-
	-	✓	-	-	-	-
	-	✓	-	-	-	-
	✓	-	-	-	✓	-

# Keep your patio or driveway in beautiful condition for years

*All Bradstone paving is designed to withstand not only the elements but the riggers of everyday life too. But, there are a number of very simple and effective things you can do to keep your paving in tip-top condition and looking great.*

The sweep of a stiff broom and some hot soapy water can do the trick and help prevent the build-up of dirt. Occasionally you can use a patio or driveway wash to enhance the appearance.

And how could we forget weeds? Sometimes there's no getting away from them. They can take years to pop up, but if they finally do keep them at bay but pulling them up from the roots.

Then there are the natural effects of the environment. Occasionally, after a few weeks or months, white patches may appear on the surface of paving stones. This is known as efflorescence or white bloom. It's a natural phenomenon and can occur with all cement-based products, as well as other paving products. More about this and other maintenance information can be found on our website.



## Index

### Product A-Z

Aged Riven ECO ..... 66	Natural Granite..... 44	Romeli® ..... 20
Arenaria® ..... 34	Natural Granite setts..... 123	Round stepping stone ..... 129
Ashbourne™ ECO..... 68	Natural Limestone..... 50	Round top edging..... 128
Blended Natural Sandstone..... 54	Natural Limestone stepping stone.. 129	Rustic rope top edging..... 125
Block paving fixing products..... 109	Natural Sandstone ..... 52	Saddleback coping ..... 121
BradDrive® Cobblestone ECO ..... 92	Natural Sandstone edging..... 125	Scalloped edging ..... 128
Carpet Stones ..... 74	Natural Sandstone setts..... 122	Screenwall walling ..... 121
Countrystone® walling ..... 120	Natural Sandstone stepping stone . 129	Serameno® ..... 16
Driveway ..... 104	Natural Sandstone walling..... 118	Smooth Natural Sandstone ..... 42
Driveway Infilta ..... 106	Natural Slate..... 48	Smooth Natural Sandstone steps. 113
Easy Stack™ ECO walling ..... 114	Natural Stone walling slips..... 115	StoneMaster® ..... 78
ECO Countryside edging..... 126	Old Riven ECO ..... 64	StoneMaster® block paving ..... 94
Edale ECO ..... 70	Old Riven ECO edging..... 127	Stonewood® ECO sleeper edging 126
Fiero® ..... 18	Old Riven ECO walling..... 119	Stonewood® stepping stone ..... 129
Flag paving fixing products ..... 109	Old Town® ECO ..... 60	Stylus® ..... 32
Kerbs ..... 108	Old Town® ECO edging..... 125	Tatra® ..... 38
Lumley Cobble® ..... 107	Old Town® ECO evolve ..... 58	Textured ..... 86
Madera® Antigua..... 28	Old Town® ECO walling..... 118	Textured coping..... 120
Madoc ECO walling..... 119	Panache Ground ..... 80	Textured edging..... 127
Mahina® ..... 82	Peak ..... 88	Universal steps..... 112
Mode® Profiled ..... 24	Pitched walling ..... 121	Vetusto® ..... 26
Mode® Profiled coping ..... 116	Prestige walling slips..... 117	Woburn Original ..... 99
Mode® Profiled edging ..... 124	Pyramid pier cap ..... 121	Woburn Rumbled ..... 96
Mode® Profiled steps..... 113	Random stepping stone ..... 129	Woburn Rumbled Infilta ..... 98
Monksbridge ..... 102	Rock ..... 30	

### My Bradstone Assured landscaper details

.....

.....

.....

.....

.....

.....

.....

.....

.....

.....

### My favourite products

.....

.....

.....

.....

.....

.....

.....

.....

.....

.....