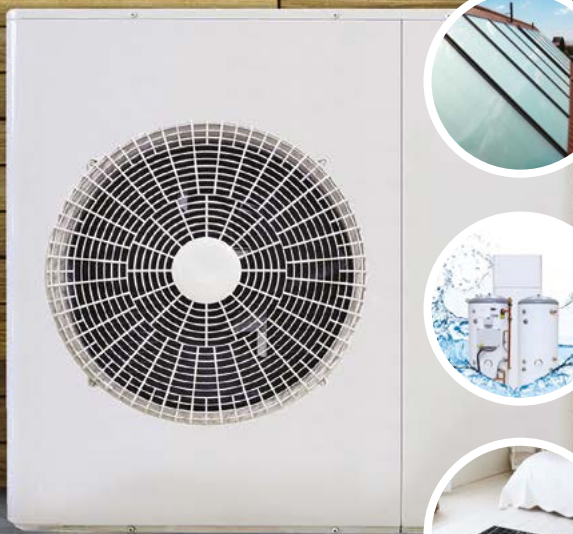




Complete Product Guide



Contents

Oil Fired Boilers & Flues	4-19
Vortex Eco Range - utility & external (outdoor modules)	5-7
Vortex Pro Range - utility & external (outdoor modules)	8-10
Vortex Boiler House Range	11
Vortex Pro Range - combi models	12
EZ-Fit Flue systems	14-19

Air Source Heat Pumps	20-22
Aerona ³ air to water heat pumps	20-22
Hybrid	23
VortexAir Hybrid	23

QR Cylinders	24-29
QR cylinders overview	24
QR single coil cylinders	25
QR single coil slimline cylinders	26
QR single coil pre-plumbed cylinders	27
QR twin coil cylinders	28
QR single coil integrated cylinders	29

Solar Thermal Systems	30-36
On roof kits	30-32
In roof & flat roof kits	33-34
Accessories	35-36

Magnetic Central Heating Filter	37
Mag One filter	37

Heat Emitters	38-43
Uflex underfloor heating	38-42
Afinia aluminium radiators	43

Flexible learning anytime, anywhere with the Grant eLearning Academy

Develop product and industry knowledge from the comfort of your own home with our expert trainers.

Training with Grant eLearning could not be easier!



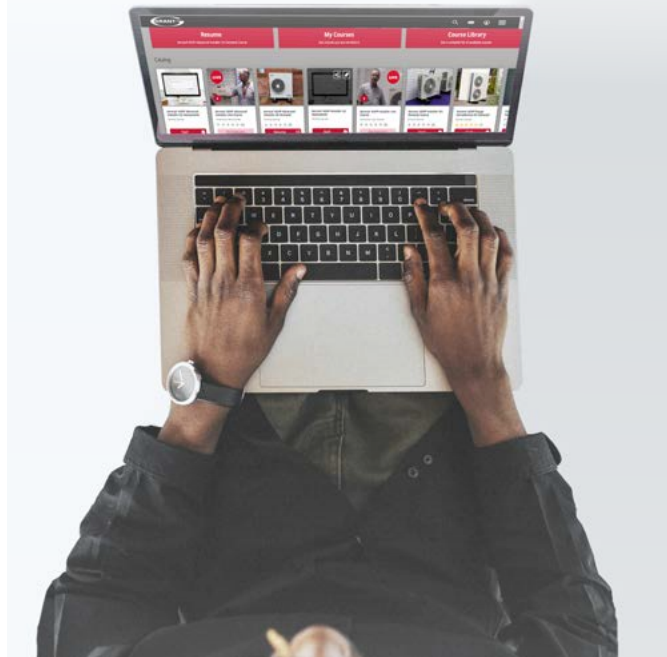
Simply register online using the unique enrolment key below



Access on-demand training at any time or enrol on to a real time instructor led course



Complete a course and automatically receive a certificate as evidence of your training



grantelearning.com

ENROLMENT KEY: GUKPRS0820





**GO PRO GET 10
THE GRANT VORTEX PRO
OIL BOILER NOW WITH A
10 YEAR GUARANTEE***

**10
YEAR GUARANTEE**



We are taking steps to future proof our industry. Scan to read our HVO blog and find out more.



Read More

Vortex Eco Range



- Outputs from 15-35kW
- Up to 92.7% efficiencies (SAP 2009)
- Riello/ Ecoflam low NOx yellow flame burner
- Up to 5 year guarantee*



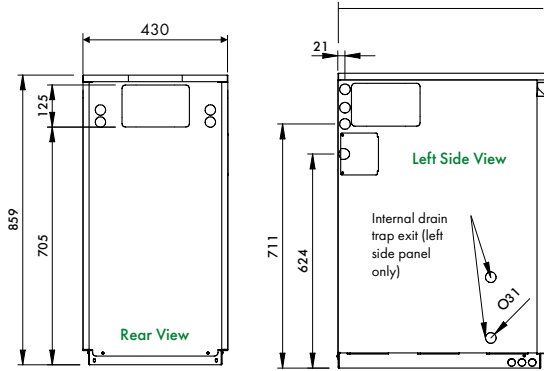
Floor standing models only

Product Code	Output		Dimensions			Weight (dry) kg	Burner
	Btu/h	kW	H	W	D		
Internal standard models - white cased							
VTXECO15/21	50-70	15-21	859	430	606	97	RDB2.2 BX
VTXECO21/26	70-90	21-26	859	430	606	97	RDB2.2 BX
VTXECO26/35	90-120	26-35	898	470	602	127	RDB2.2 BX
Internal sealed system models - white cased							
VTXSECO15/21	50-70	15-21	859	430	606	123	RDB2.2 BX
VTXSECO21/26	70-90	21-26	859	430	606	123	RDB2.2 BX
VTXSECO26/35	90-120	26-35	898	470	602	138	RDB2.2 BX
External standard modules (inc flue) - powder coated case							
VTXOMECO15/21	50-70	15-21	908	505	800	113	RDB2.2 BX
VTXOMECO21/26	70-90	21-26	908	505	800	113	RDB2.2 BX
VTXOMECO26/35	90-120	26-35	908	505	800	142	RDB2.2 BX
External sealed system models (inc flue) - powder coated cased							
VTXSOMECO15/21	50-70	15-21	908	505	800	136	RDB2.2 BX
VTXSOMECO21/26	70-90	21-26	908	505	800	136	RDB2.2 BX
VTXSOMECO26/35	90-120	26-35	908	505	800	152	RDB2.2 BX

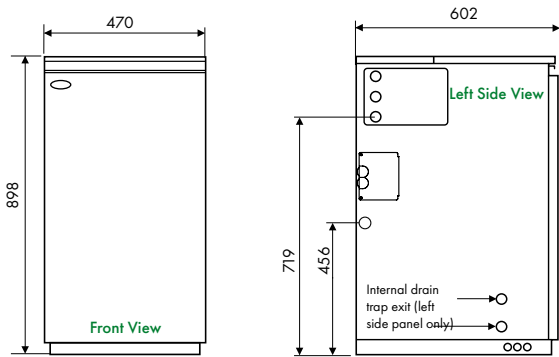
*When installed by a G1 Installer. Subject to full T&C's.

Vortex Eco Range

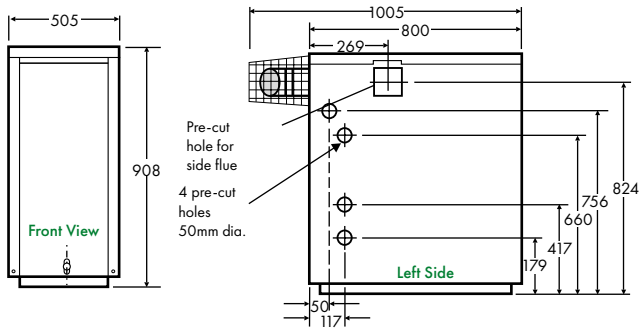
Dimensions (mm)



Vortex Eco 15-21, 21-26kW Utility System



Vortex Eco 26-35kW Utility System

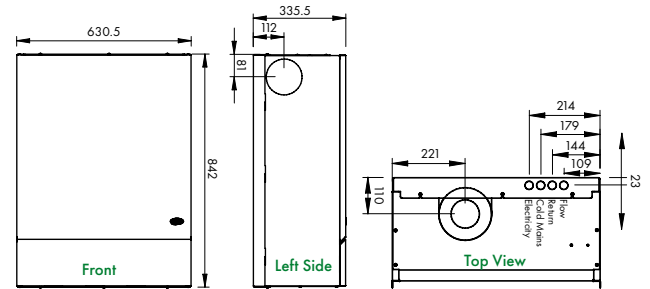


Vortex Eco 15-21, 21-26, 26-35kW External and External System

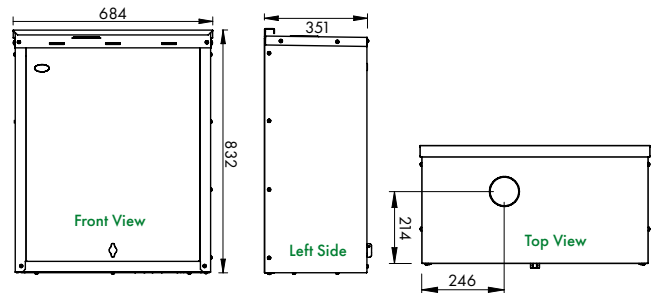
Vortex Eco Range

Product Code	Output		Dimensions			Weight (dry) kg	Burner
	Btu/h	kW	H	W	D		
Wall hung internal standard models - white cased							
VTXWH16/21	55-70	16-21	842	630.5	335.5	85.7	MAX1 LN
Wall hung internal sealed system models - white cased							
VTXSWH16/21	55-70	16-21	842	630.5	335.5	97.5	MAX1 LN
Wall hung external standard models (inc flue) - powder coated cased							
VTXOMWH16/21	55-70	16-21	832	684	351	92.1	MAX1 LN
Wall hung external sealed system models (inc flue) - powder coated cased							
VTXSOMWH16/21	55-70	16-21	832	684	351	96.1	MAX1 LN

Dimensions (mm)



Vortex Eco Wall Hung and Wall Hung System 16-21kW Internal



Vortex Eco Wall Hung and Wall Hung System 16-21kW External

Vortex Pro Range

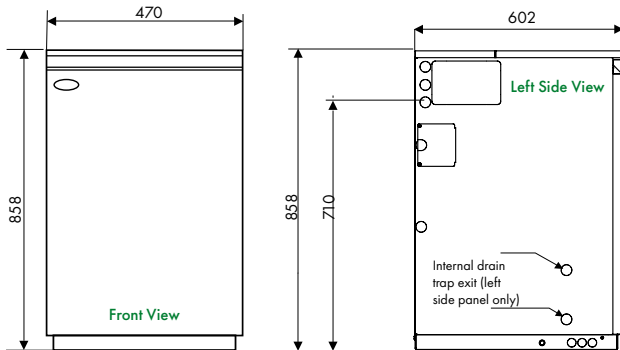


- Outputs from 15-70kW
- Up to 91.7% efficiencies (SAP 2009)
- Riello low NOx yellow flame burner
- Up to 10 year guarantee *



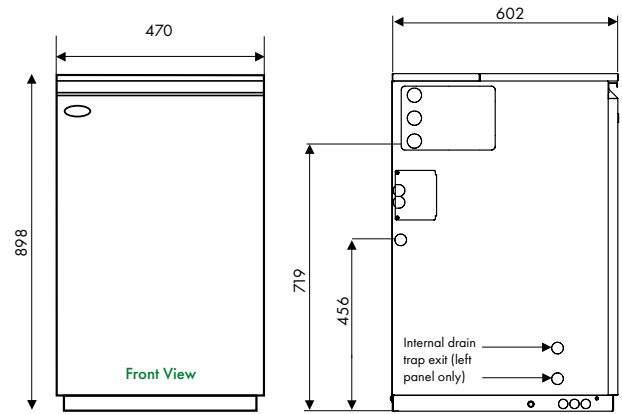
Product Code	Output		Dimensions			Weight (dry) kg	Burner
	Btu/h	kW	H	W	D		
Internal standard models - white cased							
VTX15/26	50-90	15-26	858	470	602	130	RDB1 BX
VTX26/46	90-157	26-46	898	470	602	144	RDB2.2 BX
VTX46/70	157-240	46-70	1234	563	782	282	RDB3.2 BX
Internal sealed system models - white cased							
VTXS15/26	50-90	15-26	858	470	602	138	RDB1 BX
VTXS26/46	90-157	26-46	898	470	602	168	RDB2 BX
External standard modules (inc flue) - powder coated case							
VTXOM15/26	50-90	15-26	910	505	796	143	RDB1 BX
VTXOM26/46	90-157	26-46	910	505	796	162	RDB2 BX
VTXOM46/70	157-240	46-70	1239	586	947	288	RDB2.2 BX

Dimensions (mm)

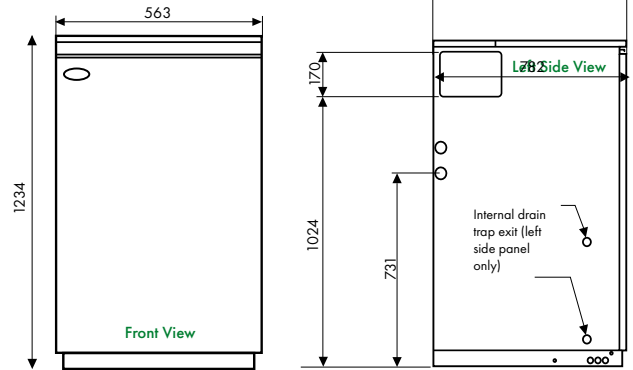


Vortex Pro and Pro System 15-26kW

Vortex Pro Range



Vortex Pro and Pro System 26-46kW



Vortex Pro 46-70kW

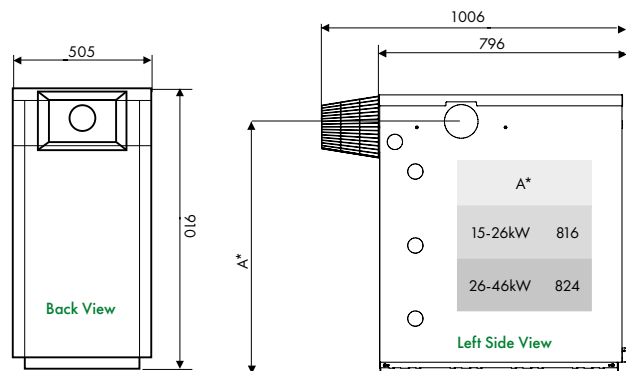
TechBox

All current and archived Grant installation manuals at your fingertips.

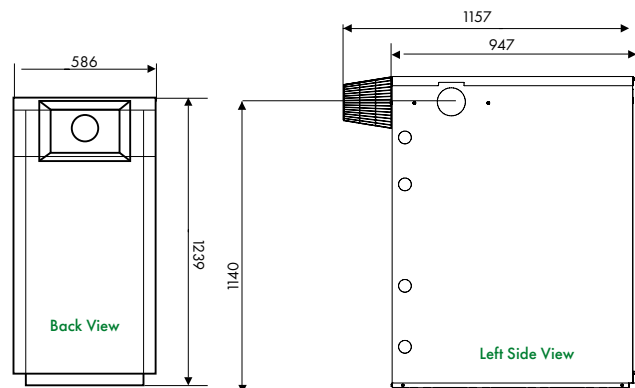


*When installed by a G1 Installer. Subject to full T&C's.

Vortex Pro Range



Vortex Pro External 15-26kW & 26-46kW



Vortex Pro External 46-70kW

Accessories & Control Options	
Product Code	Description
VTXOMSSKIT26	12 Litre Sealed System Kit for VTXOM26
VTXOMSSKIT26/46	16 Litre Sealed System Kit for VTXOM26/ VTXOM46

Vortex Boiler House Range



- Outputs from 15-70kW
- Up to 91.7% efficiencies (SAP 2009)
- Riello low NOx yellow flame burner
- Up to 5 year guarantee*

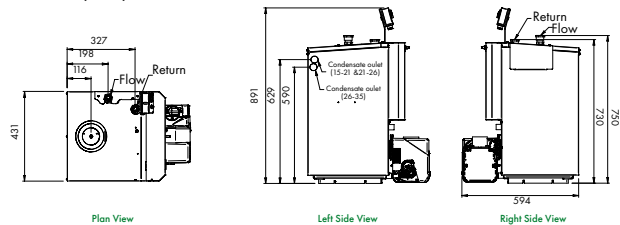


Product Code	Output		Dimensions			Weight (dry) kg	Burner
	Btu/h	kW	H	W	D		
Internal boiler house models - red cased							
VTXBH1526	50-90	15-26	891 ¹	431	594 ²	125	RDB2.2 BX
VTXBH2646	90-157	26-46	877 ¹	455	591 ²	145	RDB2.2 BX
VTXBH4670	157-240	46-70	1078 ¹	542	765 ²	301	RDB2.2 BX

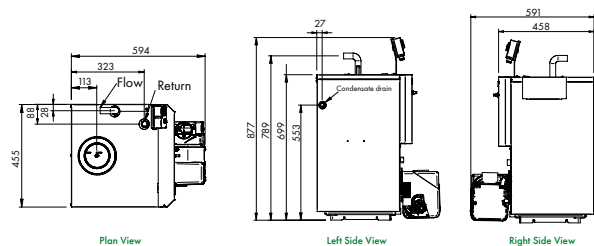
¹Including dual thermostat

²Including burner

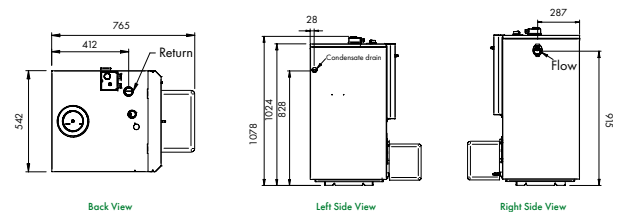
Dimensions (mm)



Vortex Boiler House 15-26kW



Vortex Boiler House 26-46kW



Vortex Boiler House 46-70kW

*When installed by a G1 Installer. Subject to full T&C's.

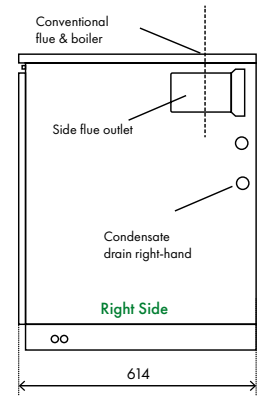
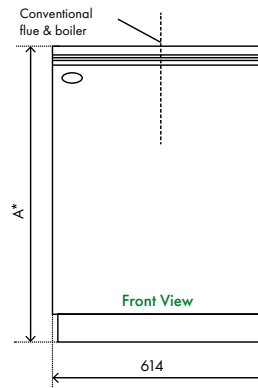
Vortex Pro Combi Range



- Outputs from 21-36kW
- Up to 94.5% efficiencies (SAP 2009)
- Riello low NOx yellow flame burner
- Up to 10 year guarantee*

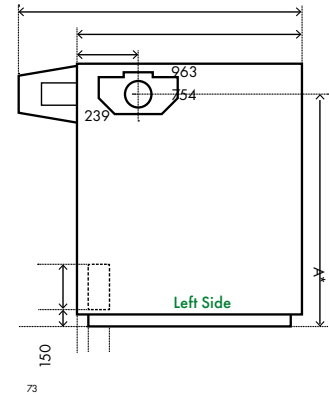
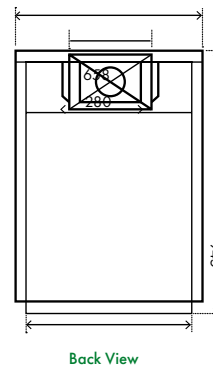


Product Code	Output		Dimensions			Weight (dry) kg	Burner
	Btu/h	kW	H	W	D		
Internal Combi models - white cased							
VTXCOMBI21	70	21	860	614	614	160	RDB2.2 BX
VTXCOMBI26	90	26	860	614	614	177	RDB1 BX
VTXCOMBI36	123	36	900	614	614	200	RDB2.2 BX
Internal Combi XS model - white cased							
VTXXSCOMBI26	90	26	857	515	606	163	RDB2.2 BX
External Combi modules (incl flue) - powder coated cased							
VTXOMCOMBI21	70	21	945	658	754	181	RDB2.2 BX
VTXOMCOMBI26	90	26	945	658	754	206	RDB1 BX
VTXOMCOMBI36	123	36	945	658	754	225	RDB2.2 BX



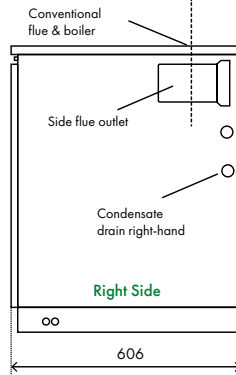
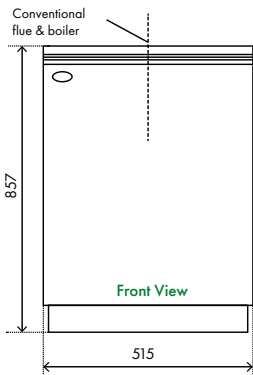
A*	
21kW	860
26kW	860

Vortex Pro Combi 21kW, 26kW, 36kW



A*	
21kW	828
26kW	828

Vortex Pro Combi External 21kW, 26kW, 36kW



Vortex Pro Combi XS 26kW

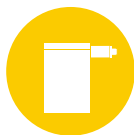
*When installed by a G1 Installer. Subject to full T&C's.

Vortex Pro Combi Range

Yellow System

Low level balanced flue kits

- Low level
- Suitable for all internal Vortex models
- Stainless steel
- Terminal section and guard are black painted

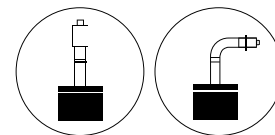


Product Code	Output (kW)	Description
EZ90B	15-26	Standard flue kit – Walls up to 450mm Includes s/s terminal guard (Black painted finish)
EZ90SB	15-26	Short flue kit – Single skin walls up to 230mm Includes s/s terminal guard (Black painted finish)
X90S	15-26	Extension 225mm
X90M	15-26	Extension 450mm
X90L	15-26	Extension 675mm
EZELB90	15-26	90° Elbow Kit (Includes 90° elbow and 225mm Extension)
EZ45/90	15-26	45° Elbow Kit (Includes 45° elbow and 225mm Extension)
EZ45/90S	15-26	Short elbow only up to 26kW
GPDA90B	15-26	Adjustable plume diverter kit 80mm x 2 metres (Black painted finish)
GPD250EXT/90B	15-26	Extension 250mm (Black painted finish)
GPD500EXT/90B	15-26	Extension 500mm (Black painted finish)
GPD1000EXT/90B	15-26	Extension 1000mm (Black painted finish)
GPDA45/90B	15-26	45° elbow (Black painted finish)
GPDBRKT90B	15-26	Wall bracket (Black painted finish)
EZ200B	26-70	Standard flue kit – Walls up to 450mm Includes s/s terminal guard (Black painted finish)
EZ200SB	26-70	Short flue kit – Single skin walls up to 230mm Includes s/s terminal guard (Black painted finish)
X200S	26-70	Extension 225mm
X200M	26-70	Extension 450mm
X200L	26-70	Extension 675mm
EZELB200	26-70	90° Elbow Kit (Includes 90° elbow and 225mm Extension)
EZ45/200	26-70	45° Elbow Kit (Includes 45° elbow and 225mm Extension)
EZ45/200S	26-70	Short elbow only above 26kW
GPDA200B	26-70	Adjustable plume diverter kit 100mm x 2 metres (Black painted finish)
GPD250EXT/200B	26-70	Extension 250mm (Black painted finish)
GPD500EXT/200B	26-70	Extension 500mm (Black painted finish)
GPD1000EXT/200B	26-70	Extension 1000mm (Black painted finish)
GPDA45/200B	26-70	45° elbow (Black painted finish)
GPDBRKT200B	26-70	Wall bracket (Black painted finish)

White System

High level/ vertical balanced flue kits

- High level/ Vertical
- Easy to install
- Suitable for all internal Vortex models
- Stainless steel white powder coated



Product Code	Output (kW)	Description
HLK015090	15-26	1.2 metre High level adjustable flue kit c/w 90° elbow and terminal
VTK055090	15-26	Adjustable Vertical 3 metre flue kit c/w terminal and storm collar
EXTK31225/90	15-26	Extension 225mm (9")
EXTK09450/90	15-26	Extension 450mm (18")
EXTK11950/90	15-26	Extension 950mm (38")
EXTK13ADJ/90	15-26	Adjustable extension 275 - 450mm (10 to 18")
ELBK2145/90	15-26	45° elbow
VTMF90/200	15-70	Pitched master flashing [aluminium]
VTK25P90/X	15-26	Pitched flashing [lead replacement]
VTK27F90	15-26	Flat flashing
BRK2990	15-26	Wall bracket [galvanised]
VTEXT90	15-26	Black extension for vertical terminal 80mm x 1 mtr
HLK0290200	26-70	1.2 metre High level adjustable flue kit c/w 90° elbow and terminal
VTK0690200	26-70	Adjustable Vertical 3 metre flue kit c/w terminal and storm collar
EXTK32225/200	26-70	Extension 225mm (9")
EXTK10450/200	26-70	Extension 450mm (18")
EXTK12950/200	26-70	Extension 950mm (38")
EXTK14ADJ/200	26-70	Adjustable extension 275 - 450mm (10 to 18")
ELBK2245/200	26-70	45° elbow
VTMF90/200	12-70	Pitched master flashing [aluminium]
VTK26P240	26-70	Pitched flashing [lead]
VTK26P200X	26-70	Pitched flashing [lead replacement, incl collar]
VTK28F200	26-70	Flat flashing
BRK30200	26-70	Wall bracket [galvanised]
VTEXT200	26-70	Black extension for vertical terminal 100mm x 1 mtr

NOTE:

High level/vertical flues, extensions and accessories can be used with all internal boilers.

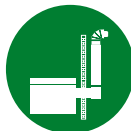
Vertical flue kits can be extended to a maximum straight length of 12m. Deduct 1m for each 45° elbow (max 6 elbows).

High level flue kits can be extended to a maximum length of 10m. Deduct 1m for each 45° elbow (max 6 elbows).

For information on Plume Diverter Kits for high level flues, please contact our Technical Department.

External High Level/ Vertical balanced flue kits

- High level/ Vertical
- Stainless steel, black painted
- Suitable for all internal & external Vortex models
- Twin wall insulated vertical extensions



Product Code	Output (kW)	Description
GK90B	15-26	Standard Starter Kit (Black painted finish)
GK90SB	15-26	Short Starter Kit (Black painted finish)
GKM90	15-26	Outdoor Module Starter (Elbow) + Test point
GKM90C	15-26	Outdoor Module Starter (Straight) + Test point
GX150/90B	15-26	Extension 150mm
GX250/90B	15-26	Extension 250mm
GX450/90B	15-26	Extension 450mm
GX950/90B	15-26	Extension 950mm
GXA250/90B	15-26	Adjustable Extension 195 - 270mm
GE45/90B	15-26	45° Elbow
GTL90	15-26	Straight Terminal Only
GTH90B	15-26	High level 90° Terminal
GTV90B	15-26	Vertical Terminal
GWB90B	15-26	Wall Bracket
GEB90B	15-26	Extended Wall Bracket
GK200B	26-70*	Standard Starter Kit (Black painted finish)
GK200SB	26-70*	Short Starter Kit (Black painted finish)
GKM200	26-46*	Outdoor Module Starter (Elbow) + Test point
GKM200C	26-46*	Outdoor Module Starter (Straight) + Test point
GX150/200B	26-70*	Extension 150mm
GX250/200B	26-70*	Extension 250mm
GX450/200B	26-70*	Extension 450mm
GX950/200B	26-70*	Extension 950mm
GXA250/200B	26-70*	Adjustable Extension 195 - 270mm
GE45/200B	26-70*	45° Elbow
GTL200	26-70*	Straight Terminal Only
GTH200B	26-70*	High level 90° Terminal
GTV200B	26-70*	Vertical Terminal
GWB200B	26-70*	Wall Bracket
GEB200B	26-70*	Extended Wall Bracket
CFA15/70	12-70	CF Adaptor/Connector from Orange to Green System

NOTE:

*The Grant Eco Outdoor Modules VTXXOME2635 and VTXXOME26/35 use the smaller 12-26 flue pipe.

Please use extensions from the Yellow System to extend starter kits horizontally.

The CFA15/70 is to only be used with the Grant Green and Orange Flue System. Fitting with any other flue system could invalidate the warranty of the boiler. If the CFA15/70 is not sent with components of the Green or Orange Systems, then full installation details will be required prior to despatch.

Conventional flue kits

- Conventional flexi kits
- Smooth bore stainless steel liner
- White powder coated extensions
- Suitable for all internal Vortex models



Product Code	Output (kW)	Description
GFKIT6/100	15-46	Flexi Kit 100mm dia x 6m
GFKIT8/100	15-46	Flexi Kit 100mm dia x 8m
GFKIT10/100	15-46	Flexi Kit 100mm dia x 10m
GFKIT11/100	15-46	Flexi Kit 100mm dia x 11m
GFKIT12/100	15-46	Flexi Kit 100mm dia x 12m
GFKIT14/100	15-46	Flexi Kit 100mm dia x 14m
GFKIT16/100	15-46	Flexi Kit 100mm dia x 16m
WX150/100	15-46	White Extension 150mm x 100mm dia
WX250/100	15-46	White Extension 250mm x 100mm dia
WX450/100	15-46	White Extension 450mm x 100mm dia
WX950/100	15-46	White Extension 950mm x 100mm dia
WXA250/100	15-46	235mm x 300mm x ø100mm White Adjustable Extension
WE45/100	15-46	White 45° Elbow x 100mm dia
GFKIT6/125	46-70	Flexi Kit 125mm dia x 6m
GFKIT8/125	46-70	Flexi Kit 125mm dia x 8m
GFKIT10/125	46-70	Flexi Kit 125mm dia x 10m
GFKIT11/125	46-70	Flexi Kit 125mm dia x 11m
GFKIT12/125	46-70	Flexi Kit 125mm dia x 12m
GFKIT14/125	46-70	Flexi Kit 125mm dia x 14m
GFKIT16/125	46-70	Flexi Kit 125mm dia x 16m
WX150/125	46-70	White Extension 150mm x 125mm dia
WX250/125	46-70	White Extension 250mm x 125mm dia
WX450/125	46-70	White Extension 450mm x 125mm dia
WX950/125	46-70	White Extension 950mm x 125mm dia
WXA250/125	46-70	235mm x 300mm x ø125mm White Adjustable Extension
WE45/125	46-70	White 45° Elbow x 125mm dia

Flexi Kit includes: Terminal/top plate/flexi-flue adaptor assembly, adaptor to flexi, boiler flue connector, locking band and fixing screws, plus tube of silicon and length of smooth bore insulated flexible flue liner.

NOTE: Maximum vertical height from top of the boiler to the terminal is 19 metres. Maximum of 2 x 45° elbows can be used.

Flexi Vertical balanced flue kits

- Balanced flexi kits
- Smooth bore stainless steel inner and outer liners
- Suitable for all internal Vortex up to 26kW



Product Code	Output (kW)	Description
GFXBF6/26COMR	15-26	6m Balanced Flexi Liner Kit
GFXBF8/26COMR	15-26	8m Balanced Flexi Liner Kit
GFXBF10/26COMR	15-26	10m Balanced Flexi Liner Kit
GFXBF12/26COMR	15-26	12m Balanced Flexi Liner Kit
EXTK31225/90	15-26	Extension 225mm (9")
EXTK09450/90	15-26	Extension 450mm (18")
EXTK11950/90	15-26	Extension 950mm (38")
EXTK13ADJ/90	15-26	Adjustable extension 275 - 450mm (10 to 18")
ELBK2145/90	15-26	45° elbow

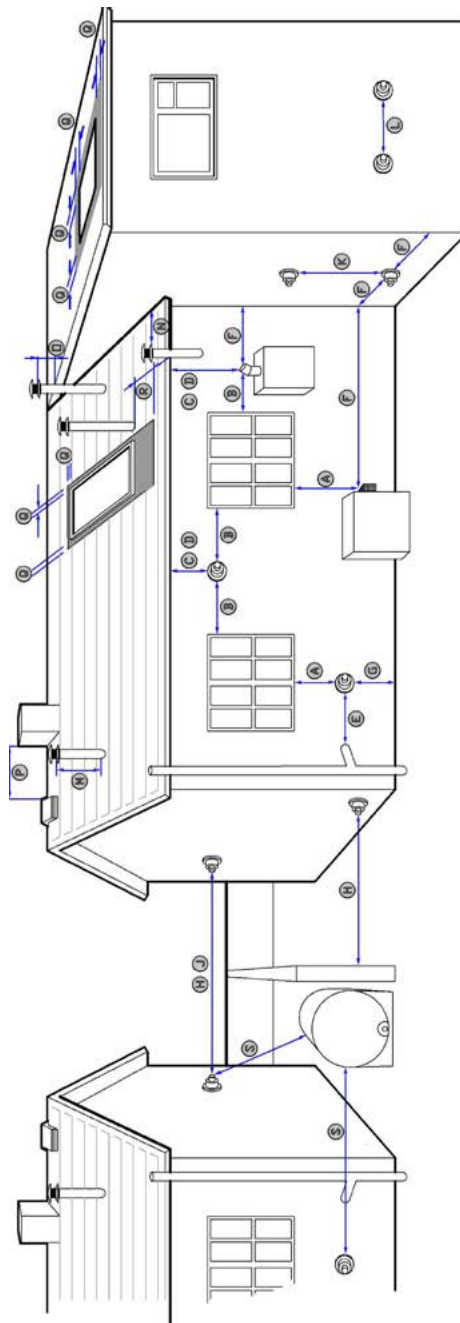
Liner Kit includes: 125mm flexi liner, 80mm 316 stainless steel smooth bore flexi liner, Boiler Connector, Telescopic Extension, Rigid to Flexi Adaptor and Terminal Assembly (approximate height above boiler case 820 - 1220mm)

NOTE: Maximum vertical height from top of the boiler to the terminal is 20m. Deduct 1m for each 45° elbow (max 4 elbows).

Ref	Location of outlet (see diagram opposite)	Pressure Jet (mm)	Condensing (mm)
A	Directly below an opening, air brick opening, opening window, etc.	600	1000**
B	Horizontally to an opening, air brick opening, opening window, etc.	600	1000**
C	Below a gutter, eaves or balcony with protection	75*	1000**
D	Below a gutter, eaves or balcony without protection	600	1000**
E	From vertical sanitary pipe work	300	
F	From an internal or external corner	300	
G	Above ground or balcony level	300	
H	From a surface or boundary facing the terminal	600	2500**
J	From a terminal facing the terminal	1200	
K	Vertically from a terminal on the same wall	1500	
L	Horizontally from a terminal on the same wall	750	
M	Above the highest point of an intersection with the roof	600	
N	From a vertical structure to the side of the terminal	750	
O	Above a vertical structure less than 750 mm from the side of the terminal	600	
P	From a ridge terminal to a vertical structure on the roof	1500	
Q	Above or to the side of any opening on a flat or sloping roof	300	
R	Below any opening on a sloping roof	1000	
S	From oil storage tank (Class 1)	1800***	

Note:

- * A heat shield at least 750mm wide must be fitted to provide protection of combustible material
- ** Clearances required by BS 5410-1:2014 to alleviate the effect of plume nuisance. If a risk assessment shows that there will be no impact from plumbing, then the 'pressure jet' figure could apply - seek confirmation from Local Authority Building Control.
- *** Seek guidance from OFTEC Book 3 (Oil Storage and Supply).



1. Appliances burning class D fuel have additional restrictions. Refer to BS 5410-1:2014.
2. Vertical structure in N, O and P includes tank or lift rooms, parapets, dormers, etc.
3. Terminating positions A to L are only permitted for appliances that have been approved for low level flue discharge when tested in accordance with BS EN 303-1, OFS A101, 4. Terminating positions should be at least 1.8 metres from an oil storage tank (Class 1) unless a wall with at least 30 minutes fire resistance and extending 300 mm higher and wider than the tank is provided between the tank and the terminating position.
5. Where a flue is terminated less than 600 mm away from a projection above it and the projection consists of plastics or has a combustible or painted surface, then a heat shield of at least 750 mm wide should be fitted to protect these surfaces.
6. If the lowest part of the terminal is less than 2 metres above the ground, balcony, flat roof or other place to which any person has access, the terminal should be protected by a guard.
7. Notwithstanding the dimensions given above, a terminal should not be sited closer than 300 mm to combustible material. In the case of a pitched roof, double this separation distance should be provided. It is also advisable to treat the flitch with a fire retardant material and close wire in the immediate vicinity of the flue.
8. A flue or chimney should not pass through the roof within the shaded area delineated by dimensions Q and R.
9. Where protection is provided for plastics components, such as guttering, this should be to the standard specified by the manufacturer of the plastics components.
10. Terminals must not be sited under car ports.
11. Terminals at low levels (terminals under 2.1 metres) have more restrictive recommendations and should not be positioned near public footways, frequently used access routes, car parking spaces less than 2.5 metres from the terminal or patio's (hard surface area). Further guidance can be obtained from BS 5410-1:2014, OFTEC Book 4 (Installation) and Approved Document J. Grant UK flue products are fully compliant with the CE (Communauté Européenne/ European Community) standards having undergone rigorous product testing.

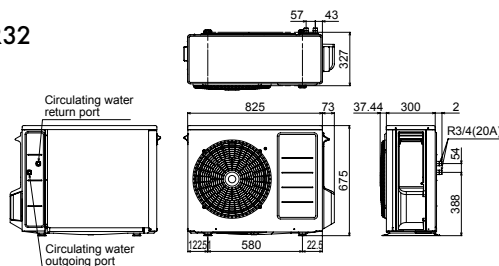
Aerona³ R32 Heat Pumps

- kW** Outputs from 6kW up to 17kW
- R32 refrigerant**
- In-built weather compensation**
- In-built frost protection**
- Suitable for use with S & W-Plan heating control systems**
- Up to 7 year guarantee***

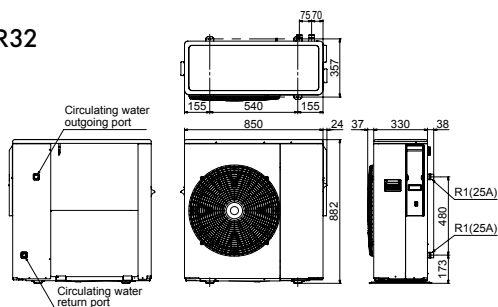


*When installed by a G1 Installer. Subject to full T&C's.

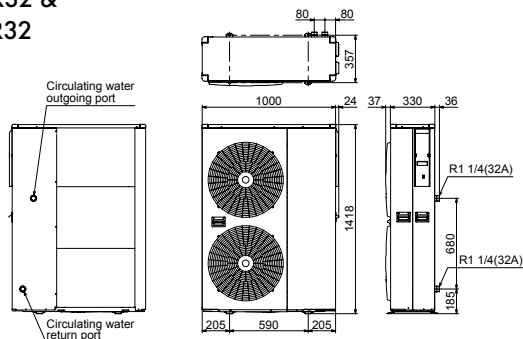
HPID6R32



HPID10R32



HPID13R32 & HPID17R32

Aerona³ R32 Heat PumpsAerona³ Heat Pumps

Model	HPID6R32	HPID10R32	HPID13R32	HPID17R32
ErP Rating (heating @35OC flow) EN14825-SSHEE W45	A+++	A+++	A+++	A+++
Height (mm)	675	882	1418	1418
Width (mm)	898	874	1024	1024
Depth (mm)	379.4	405	403	403
Weight (kg full)	52.8	71.8	101	120
Heating Capacity (kW) (BS EN 14511 air 7°C/ Water 35°C)	6.92	11.1	13.6	18.0
Power input (kW) (BS EN 14511 air 7°C/ Water 35°C)	1.41	2.10	2.59	3.76
COP (at 7°C air/ 35°C flow)	4.91	5.28	5.25	4.79
SCOP (average climate conditions) 35°C	4.61	5.20	5.40	4.54
Refrigerant (R32) (kg)	0.80	1.55	2.20	2.80
Operating voltage (v)	230	230	230	230
Water connections (BSPF)	3/4"	1"	1 1/4"	1 1/4"
Min/max operating temperatures (Air °C)	-20/43	-20/43	-20/43	-20/43
Sound power level at 1m (dB(A)) (BS EN ISO 3743-1:2010)	65.2	64	60.8	61.6
Sound pressure level at 1m (dB(A)) (Q=1)	54.2	53	49.8	50.6
Electrical Installation Requirements				
Max running current (A)	11.2	17.5	23.0	25.3
MCB	Rating (A)	16	20	32
	Type	C	C	C

Aerona³ Accessories

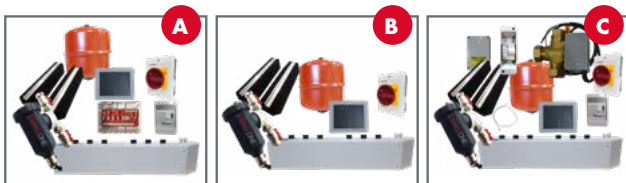
HPIDSYLLHKIT	System combined volumiser/low loss header (70kW) kit c/w 2x28mm valves
HPWPR1	Water Priority Relay
HPWPR2	Water Priority Relay (2 CH Zone)
EP001	Wiring centre
EP001X	Wiring centre (hard wired)
EP002	Heat Pump wiring interface
HPIDT205	7 day Immersion Programmer (legionella)
HPIDFOOT/KIT2	Aerona ³ flexi-foot kit with fixings (2 x 600mm)
HPIDINSU/KIT	Aerona ³ through wall insulation kit to fit 22-28mm flexi hose
HPID120	28mm 3-Port diverter valve
HPID121	10k Ohm cylinder sensor
HPIDTM4	DHW Programmer
EML/100A	Aerona ³ wall mounted electricity meter
HPIDHEATMETER2	Aerona ³ heat meter kit (compatible with HPID6R32 & HPID10R32)
HPIDHEATMETER	Aerona ³ heat meter kit (compatible with HPID13R32 & HPID17R32)
INHIB03	Inhibitor/ anti-freeze 25 litre
HPIDAC32	AC isolator 32amp

Aerona³ R32 Heat PumpsAerona³ Accessories

HPIDWALLBRKT2	Aerona ³ heat pump wall bracket (M-Type 90-120kg)
VM01/X	MagOne 22mm - 28mm central heating magnetic filter
VM04	MagOne fill and flush connection kit

Aerona³ Sealed System Kits

HPAWSSK12	12 Litre sealed system kit for Aerona ASHP
HPAWSSK18	18 Litre sealed system kit for Aerona ASHP
HPAWSSK50	50 Litre sealed system kit for Aerona ASHP

Aerona³ Installation Packs

Pack Contents

	HPIDR32PACKA	HPIDR32PACKB	HPIDR32PACKC
Flexi Foot kit	✓	✓	✓
MagOne filter	✓	✓	✓
DHW programmer	✓	✓	✓
18ltr sealed system kit	✓	✓	✓
Combined volumiser/ low loss header	✓	✓	✓
32A AC isolator	✓	✓	✓
Wiring centre c/w DHW priority	✓	x	x
Hot water priority relay	x	x	✓
7 day Immersion Programmer	✓	x	✓
Heat pump wiring interface	x	x	✓
Cylinder sensor	x	x	✓
28mm 3-port diverter valve	x	x	✓

VortexAir Hybrid Range



- VortexAir 15-26kW oil boiler
- 17kW Aerona³ air source heat pump
- Boiler can be fitted internally or externally
- Low level balanced flue kit included
- Up to 5 year guarantee*



Grant VortexAir Hybrid

Model	HPIDAIR1526		
ErP Rating EN14825:2015 SHHEE W45	Heat Pump	Heating	A+++
	Boiler	Heating	A
Height (mm)	1420		
Width (mm)	2047		
Depth (mm)	525		
Weight (kg)	Heat Pump	Empty	118
	Boiler	Empty	151
	Combined	Empty	269
Boiler Output (kW)	21-2		
Heat Pump Capacity (kW)	18.0		
Heat Pump Power input (kW) (BS EN 14511 air 7°C/ Water 35°C)	3.76		
Heat Pump COP (at 7°C air/ 35°C flow)	4.79		
Heat Pump SCOP (average climate conditions) 35°C	4.54		
Heat Pump Refrigerant (R32) (kg)	2.80		
Heat Pump Operating voltage (v)	230		
Heat Pump Flow/ return tappings (BSPF)	1 1/4"		
Heat Pump Min/max operating temperatures	Air (°C)		-20/43
Heat Pump Sound power level at 1 m (dB(A)) (BS EN ISO 3743-1:2010)	61.6		
Heat Pump Sound pressure level at 1 m (dB(A)) (Q=1)	50.6		
Electrical Installation Requirements			
Max running current (A)	25.3		
MCB	Rating (A)		32
	Type		C

Grant VortexAir Accessories

HPIDHEATMETER	VortexAir Heat Meter Kit
HPIDKW/HMETER	VortexAir DIN rail mounted electricity meter
HPIDFOOT/KIT2	Flexi-foot kit with fixings (2 x 600mm) **

*When installed by a G1 Installer. Subject to full T&C's.

**requires one set for boiler (if installed externally) and one set for heat pump



- Sizes from 150 - 300 litres
- Slimline, Pre-Plumbed and Integrated models
- Fast recovery stainless steel coils
- Labelled tappings and connections
- Supplied with unvented kit as standard including expansion vessel, inlet manifold, tundish, 2-port motorised valve and dual thermostat

* Subject to full T&C's.

Quick Recovery Cylinders

Single Coil

Model	Actual Capacity (ltrs)	ErP Rating	Expansion vessel (ltrs)	Coil rating primary (kW)	Overall Height (mm)	Overall Diameter (mm)	Weight empty (kg)	Weight full (kg)
QRSC150	136	C	19	32.0	1117	550	45	181
QRSC180	167	C	19	32.0	1305	550	50	217
QRSC210	197	C	19	32.0	1491	550	54	251
QRSC250	237	C	19	32.0	1744	550	62	299
QRSC300	289	C	24	34.0	2054	550	68	357

Single Coil | Slimline

Model	Actual Capacity (ltrs)	ErP Rating	Expansion vessel (ltrs)	Coil rating primary (kW)	Overall Height (mm)	Overall Diameter (mm)	Weight empty (kg)	Weight full (kg)
QRSC150SL	141	C	19	30.0	1458	478	39	180
QRSC180SL	171	C	19	30.0	1708	478	43	214
QRSC210SL	201	C	19	30.0	2021	478	50	251

Single Coil | Pre-Plumbed

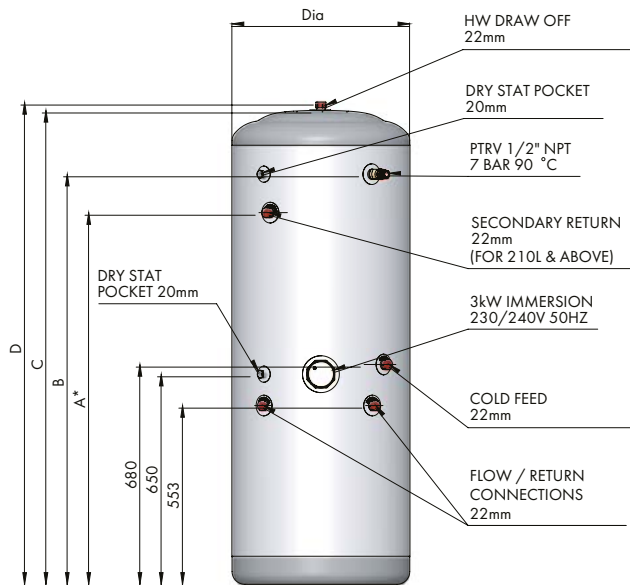
Model	Actual Capacity (ltrs)	ErP Rating	Expansion vessel (ltrs)	Coil rating primary (kW)	Overall Height (mm)	Overall Diameter (mm)	Weight empty (kg)	Weight full (kg)
QRSC210PP	197	C	19	32.0	1493	550	59	256
QRSC250PP	237	C	19	32.0	1744	550	67	304
QRSC300PP	289	C	24	34.0	2057	550	73	362

Single Coil | Integrated

Model	Actual Capacity (ltrs)	ErP Rating	Expansion vessel (ltrs)	Coil rating primary (kW)	Overall Height (mm)	Overall Width (mm)	Overall Depth (mm)	Weight empty (kg)	Weight full (kg)
QRINTSC210	197	C	19	32.0	1855	594	727*	139	375

Twin Coil

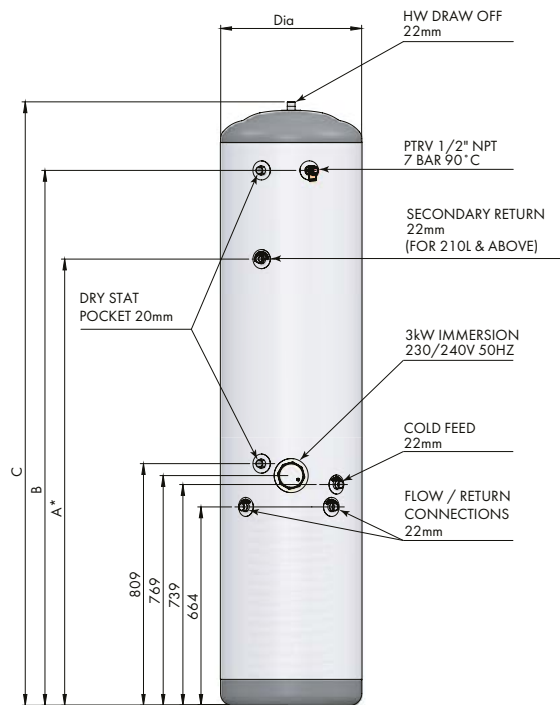
Model	Actual Capacity (ltrs)	ErP Rating	Expansion vessel (ltrs)	Coil rating primary (kW)	Solar Coil (kW)	Overall Height (mm)	Overall Diameter (mm)	Weight empty (kg)	Weight full (kg)
QRTC210	192	C	19	32.0	19.7	1490	550	59	251
QRTC250	233	C	19	32.0	20.7	1741	550	65	298
QRTC300	284	C	24	34.0	22.1	2054	550	77	361



Single Coil

Dimensions (mm)	150L	180L	210L	250L	300L
A*	-	-	1150	1400	1600
B	893	1081	1269	1519	1832
C	1091	1279	1467	1717	2030
D	1117	1305	1491	1744	2054
Diameter	550	550	550	550	550

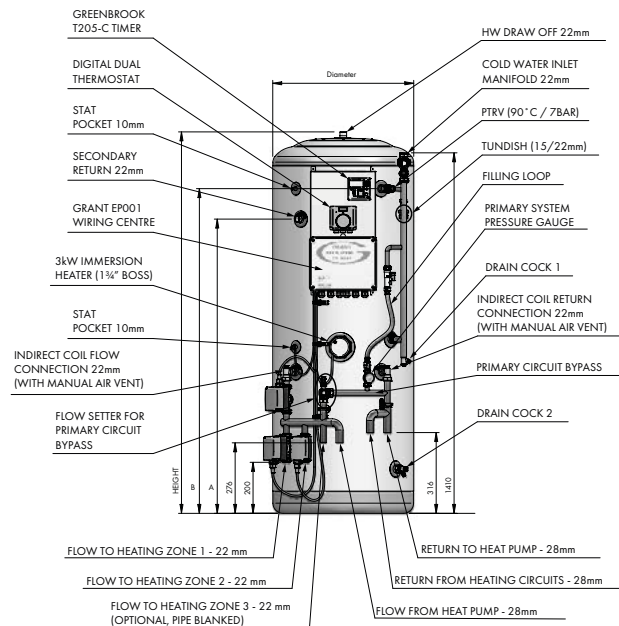
*Secondary return on 210, 250 & 300 litre models only



Single Coil | Slimline

Dimensions (mm)	150L	180L	210L
A*	-	-	1494
B	1228	1478	1791
C	1458	1708	2021
Diameter	478	478	478

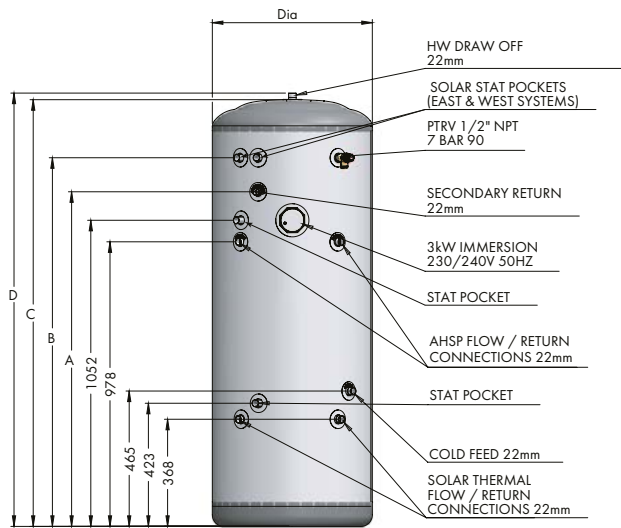
*Secondary return on 210 litre model only



Single Coil | Pre-Plumbed

Dimensions (mm)	210L	250L	300L
A	1150	1400	1600
B	1269	1519	1832
Height	1493	1744	2057
Diameter	550	550	550

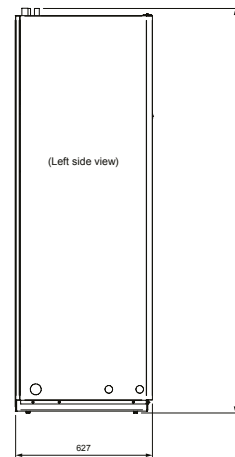
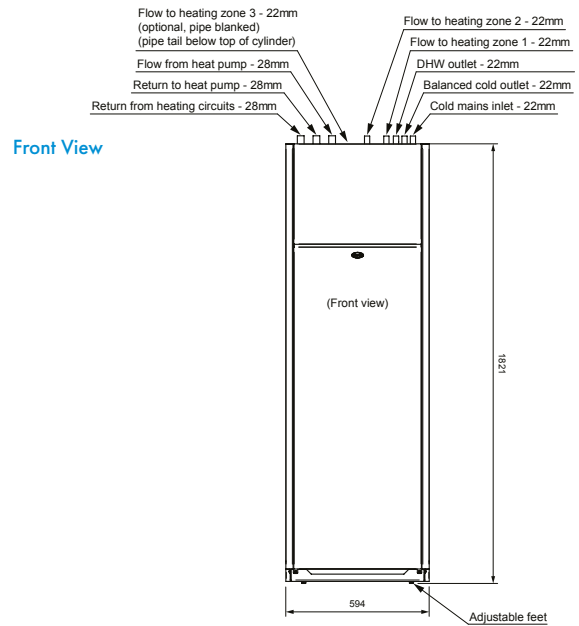
QR Cylinder Range



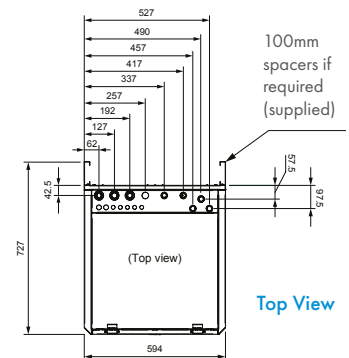
Twin Coil

Dimensions (mm)	210L	250L	300L
A	1150	1401	1601
B	1267	1518	1831
C	1467	1717	2030
D	1490	1741	2054
Diameter	550	550	550

QR Cylinder Range








Side View



Top View

Single Coil | Integrated



-  82.6% collector efficiency
-  Significantly lower CO₂ emissions
-  Helps reduce annual fuel bills
-  Minimum maintenance
-  Up to 10 year guarantee*



Solar Keymark

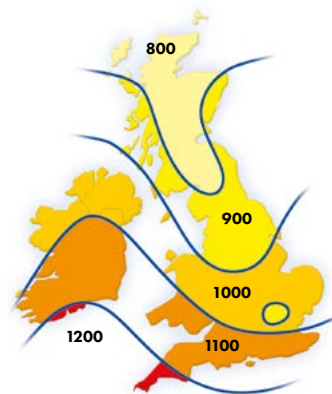
*When installed by a G1 Installer. Subject to full T&C's.

Collector Information	
Length (mm)	2043
Width (mm)	1143
Depth (mm)	80
Collector gross area (m ²)	2.34
Aperture/absorber area (m ²)	2.14
Weight (kg)	40
Glass type	ESG, Durasolar P+ Sandy
Glass Thickness (mm)	3.2
Efficiency (%)	82.6
Effective thermal capacity(KJ/m ² K ²)	12620
Conversion factor (η)	0.826
Linear heat loss coefficient (α_1)	4.4
Linear heat loss coefficient (α_2) (W/m ² K ²)	0.008
Stagnation temperature (°C)	177
Maximum operating pressure (bar)	10
Fluid content (L)	1.6
Tilt angle (maximum/minimum) (°)	20/90
Pressure drop (at 2.5l/min solar fluid) (mbar)	105

*Test conditions - Irradiance 1000W/m² Ambient temperature 30°C

Solar radiation in the UK and Ireland

The diagram below shows the total average solar radiation falling on 1 m² surface, inclined at 30° to the horizontal, measured in kilowatt-hours. The average property requires approximately 3,000 kWh per year for domestic water heating.



How to calculate the number of collectors required					
Direction of roof	Solar radiation (see above map) kWh/year	Number of people per household			
		<3	4	5	6
South	900 - 1000	2	2	2	3
	1000 - 1100	2	2	2	2
	1100 - 1200	2	2	2	2
South West/ South East	900 - 1000	2	2	3	3
	1000 - 1100	2	2	2	3
	1100 - 1200	2	2	2	2
West	900 - 1000	2	3	3	4
	1000 - 1100	2	2	3	3
	1100 - 1200	2	2	2	3
East	900 - 1000	2	3	3	4
	1000 - 1100	2	3	3	3
	1100 - 1200	2	2	2	3

Cylinder requirements are 50-60 litres capacity per m² of nett collector area. To simplify this, for a 2-collector system of 2 x 2.14 = 4.28m², you would require a cylinder of approximately 200-250 litres. This should be sufficient for 4 people and satisfy up to 70% of your hot water demand per annum.

GSSKIT0		
1 Collector Bronze On-Roof	QTY	Product Code
Solar Collector (Bronze)	1	GS222773C
Connection kit flow and return	1	GS222146
1 Collector on roof extra set	1	GS222742
Pump Station	1	GS222154H
Controller	1	GS222765
Solar Fluid 20 litre	1	GS222076
Expansion Vessel 18 litre	1	GS222095
Expansion Vessel pipe connections	1	GS222074
Expansion Vessel bracket and valve	1	GS222073
Roof Anchors:		
Anchors for profile tile (Pack of 2)	2 Pks*	GS222148
Anchors for flat tile (Pack of 2)	2 Pks*	GS222091
Anchors for slate tile (Pack of 2)	2 Pks*	GS222090

GSSKIT1		
2 Collector Bronze On-Roof	QTY	Product Code
Solar Collector (Bronze)	2	GS222773C
Connection kit flow and return	1	GS222146
Connection Kit collector to collector	1	GS222068
2 Collector portrait rails and fixings	1	GS222741
Pump Station	1	GS222154H
Controller	1	GS222765
Solar Fluid 10 litre	1	GS222075
Solar Fluid 20 litre	1	GS222076
Expansion Vessel 18 litre	1	GS222095
Expansion Vessel pipe connections	1	GS222074
Expansion Vessel bracket and valve	1	GS222073
Roof Anchors:		
Anchors for profile tile (Pack of 2)	3 Pks*	GS222148
Anchors for flat tile (Pack of 2)	3 Pks*	GS222091
Anchors for slate tile (Pack of 2)	3 Pks*	GS222090

GSSKIT2		
3 Collector Bronze On-Roof	QTY	Product Code
Solar Collector (Bronze)	3	GS222773C
Connection kit flow and return	1	GS222146
Connection Kit collector to collector	2	GS222068
2 Collector portrait rails and fixings	1	GS222741
1 Collector on roof extension kit	1	GS222742
Pump Station	1	GS222154H
Controller	1	GS222765
Solar Fluid 20 litre	2	GS222076
Expansion Vessel 18 litre	1	GS222095
Expansion Vessel pipe connections	1	GS222074
Expansion Vessel bracket and valve	1	GS222073
Roof Anchors:		
Anchors for profile tile (Pack of 2)	4 Pks*	GS222148
Anchors for flat tile (Pack of 2)	4 Pks*	GS222091
Anchors for slate tile (Pack of 2)	4 Pks*	GS222090

*This is the minimum number of roof anchors required. For MCS compliant installations the number of roof anchors must be calculated using the method given in MCS012

GSSKIT15		
1 Collector Bronze In-Roof (TILE)	QTY	Product Code
Solar Collector (Bronze)	1	GS222773C
Connection kit flow and return	1	GS222146
1 Collector Portrait In-Roof Kit - Tile Roof	1	GS255247 + GS255245
Pump Station	1	GS222154H
Controller	1	GS222765
Solar Fluid 20 litre	1	GS222076
Expansion Vessel 18 litre	1	GS222095
Expansion Vessel pipe connections	1	GS222074
Expansion Vessel bracket and valve	1	GS222073

GSSKIT16		
1 Collector Bronze In-Roof (SLATE)	QTY	Product Code
Solar Collector (Bronze)	1	GS222773C
Connection kit flow and return	1	GS222146
1 Collector Portrait In-Roof Kit - Slate Roof	1	GS255249 + GS255245
Pump Station	1	GS222154H
Controller	1	GS222765
Solar Fluid 20 litre	1	GS222076
Expansion Vessel 18 litre	1	GS222095
Expansion Vessel pipe connections	1	GS222074
Expansion Vessel bracket and valve	1	GS222073

GSSKIT3		
2 Collector Bronze In-Roof (TILE)	QTY	Product Code
Solar Collector (Bronze)	2	GS222773C
Connection kit flow and return	1	GS222146
Connection Kit collector to collector	1	GS222068
2 Collector Portrait In-Roof Kit - Tile Roof	1	GS255246 + GS255244
Pump Station	1	GS222154H
Controller	1	GS222765
Solar Fluid 10 litre	1	GS222075
Solar Fluid 20 litre	1	GS222076
Expansion Vessel 18 litre	1	GS222095
Expansion Vessel pipe connections	1	GS222074
Expansion Vessel bracket and valve	1	GS222073

GSSKIT17		
2 Collector Bronze In-Roof (SLATE)	QTY	Product Code
Solar Collector (Bronze)	2	GS222773C
Connection kit flow and return	1	GS222146
Connection Kit collector to collector	1	GS222068
2 Collector Portrait In-Roof Kit - Slate Roof	1	GS255248 + GS255244
Pump Station	1	GS222154H
Controller	1	GS222765
Solar Fluid 10 litre	1	GS222075
Solar Fluid 20 litre	1	GS222076
Expansion Vessel 18 litre	1	GS222095
Expansion Vessel pipe connections	1	GS222074
Expansion Vessel bracket and valve	1	GS222073

Sahara Portrait In-roof Kits

GSSKIT4		
3 Collector Bronze In-Roof (TILE)	QTY	Product Code
Solar Collector (Bronze)	3	GS222773C
Connection kit flow and return	1	GS222146
Connection kit connector to connector	2	GS222068
2 Collector portrait In-Roof kit - Tile Roof	1	GS255246 + GS255244
1 Collector portrait In-Roof extension - Tile Roof	1	GS255251 + GS255245
Pump Station	1	GS222154H
Controller	1	GS222765
Solar Fluid 20 litre	2	GS222076
Expansion Vessel 18 litre	1	GS222095
Expansion Vessel pipe connections	1	GS222074
Expansion Vessel bracket and valve	1	GS222073

GSSKIT18		
3 Collector Bronze In-Roof (SLATE)	QTY	Product Code
Solar Collector (Bronze)	3	GS222773C
Connection kit flow and return	1	GS222146
Connection kit connector to connector	2	GS222068
2 Collector portrait In-Roof kit - Slate Roof	1	GS255248 + GS255244
1 Collector portrait In-Roof ext - Slate Roof	1	GS255245 + GS255250
Pump Station	1	GS222154H
Controller	1	GS222765
Solar Fluid 20 litre	2	GS222076
Expansion Vessel 18 litre	1	GS222095
Expansion Vessel pipe connections	1	GS222074
Expansion Vessel bracket and valve	1	GS222073

Sahara Portrait Flat Roof Kits

GSSKIT5		
2 Collector Bronze Flat-Roof	QTY	Product Code
Solar Collector (Bronze)	2	GS222773C
Connection kit flow and return	1	GS222146
Connection Kit collector to collector	1	GS222068
2 Collector portrait Flat Roof rails & fixings	1	GS222741
2 Collector portrait Flat Roof Kit	1	GS222028
2 Collector portrait Flat Roof Cruciform	1	GS222169
Pump Station	1	GS222154H
Controller	1	GS222020
Solar Fluid 10 litre	1	GS222075
Solar Fluid 20 litre	1	GS222076
Expansion Vessel 18 litre	1	GS222095
Expansion Vessel pipe connections	1	GS222074
Expansion Vessel bracket and valve	1	GS222073

For bespoke kits please contact our sales team on
+44 (0)1380 736920

Solar Accessories

PRODUCT CODE	PICTURE	DESCRIPTION
GS222139		Filling Station
GS222003		Grant Connection Kit Lead Flashing (Pack of two)
GS222008		Grant Connection Kit Acrylic Coated Lead Flashing (Pack of two)
GS222080		Insulated Pipe Clips (Pack of four)
GS600069		15mm Connector Flex Pipe Compression Fitting (DN16) (2pc)
GS600071		Connector (between two pipes) (DN16) (2pc)
GS600099		3/4 Male Connector (DN16) (2pc)
GS600194		10 metre Insulated Flex Solar Pipe (DN16)
GS600195		15 metre Insulated Flex Solar Pipe (DN16)
GS600196		25 metre Insulated Flex Solar Pipe (DN16)
GS121530		1.2 metre 15mm Foil-faced Insulation
GS122230		1.2 metre 22mm Foil-faced Insulation
GS122231		2 metre 15mm Armaflex Insulation
GS122232		2 metre 22mm Armaflex Insulation
GS222014A		2-port high temperature motorised valve 22mm
GS222015A		3-port high temperature motorised valve 22mm
GS550001		Solar fluid recovery container (including safety valve)

Solar Accessories

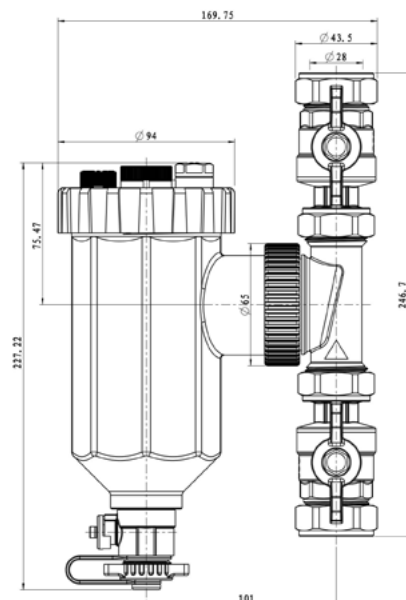
PRODUCT CODE	PICTURE	DESCRIPTION
GS222148		Anchors for profile tile (pack of 2)
GS222091		Anchors for flat tile (pack of 2)
GS222090		Anchors for slate tile (pack of 2)
GS222006		2x 15mm - 12mm Landscape Reducing Elbows
GS222068		Connection Kit Collector to Collector
GS222095		18 Litre Expansion Vessel
GS222072		25 Litre Expansion Vessel
GS222073		Expansion Vessel Bracket & Valve
GS222074		Expansion Vessel Pipe Connection
GS222075		10 Litre Solar Fluid (Glycol)
GS222076		20 Litre Solar Fluid (Glycol)
GS222146		Connection Kit Flow & Return
GS222765		GSX1 Solar Controller
GS222020X		SD3X Solar controller (for east/west systems)
COMSOL3		CombiSol Thermostatic solution for linking combination boilers to solar thermal pre-heat cylinders
WINTERSOL1		WinterSol Heats complete solar cylinder when there is no solar gain

MagOne Magnetic Central Heating Filter



- High performance heavy duty filter
- Easy clean, easy drain design
- 12000 gauss neodymium magnet
- 28mm isolation valves with 28-22mm reducers
- 360° Installation
- Suitable for systems up to 36kW, larger systems use two in parallel circuit

Product Code	Description
VM01/X	Vortex MagOne universal 22/28mm magnetic central heating filter
VM04	MagOne fill and flush connector kit



Note:
Please allow enough clearance around the Mag One to ensure the isolating valves can be fully closed.

It is recommended that a clearance of at least 250mm is given to enable the magnet and filter to be removed during servicing.

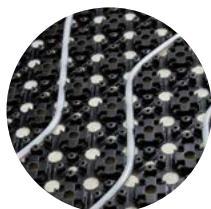
Sufficient clearance must also be given to ensure that the Mag One can be drained easily into a suitable container.

Uflex Underfloor Heating



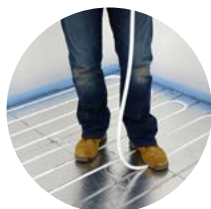
Uflex

- 16mm pipe
- Screeded system
- Unique edge insulation
- Simple installation
- Up to 25 year guarantee (subject to full T&C's)



Uflex MINI

- 10mm pipe
- Fully dry in just 3 days
- No overboarding required
- Simple installation
- Up to 25 year guarantee (subject to full T&C's)



Uflex Overlay System

- 10mm or 16mm pipe
- Dry, non-screeded system
- 16mm & 20mm polystyrene boards
- Simple and quick installation
- Up to 25 year guarantee (subject to full T&C's)

Uflex Underfloor Heating

Uflex & Uflex MINI Ranges

	PRODUCT CODE	IMAGES	DESCRIPTION
PIPES	UFLEX00		Uflex UFH Pipe 16X2,0 80m
	UFLEX01		Uflex UFH Pipe 16X2,0 120m
	UFLEX02		Uflex UFH Pipe 16X2,0 240m
	UFLEX04		Uflex UFH Pipe 16X2,0 500m
	UFLEX106		120M Uflex MINI 10mm UFH pipe
	UFLEX107		240M Uflex MINI 10mm UFH pipe
	UFLEX108		480M Uflex MINI 10mm UFH pipe
	UFLEX102		Uflex 100m Pex/Al/Pex 16mm Pipe
	UFLEX103		Uflex 250m Pex/Al/Pex 16mm Pipe
	UFLEX104		Uflex 500m Pex/Al/Pex 16mm Pipe
MANIFOLDS & PUMP SETS	UFLEX75		Uflex Manifold SS 2X3/4 EURO
	UFLEX76		Uflex Manifold SS 3X3/4 EURO
	UFLEX77		Uflex Manifold SS 4X3/4 EURO
	UFLEX78		Uflex Manifold SS 5X3/4 EURO
	UFLEX79		Uflex Manifold SS 6X3/4 EURO
	UFLEX80		Uflex Manifold SS 7X3/4 EURO
	UFLEX81		Uflex Manifold SS 8X3/4 EURO
	UFLEX82		Uflex Manifold SS 9X3/4 EURO
	UFLEX83		Uflex Manifold SS 10X3/4 EURO
	UFLEX84		Uflex Manifold SS 11X3/4 EURO
UFLEX85		Uflex Manifold SS 12X3/4 EURO	
UFLEX109		Uflex Pump/Mixer	

Uflex Underfloor Heating

	PRODUCT CODE	IMAGES	DESCRIPTION
OVERLAY BOARDS	UFLEX120		Uflex MINI overlay panel 10mm x 100mm non-foiled (pack of 10)
	UFLEX121		Uflex MINI overlay panel 10mm x 100mm foiled (pack of 10)
	UFLEX122		Uflex overlay panel 16mm x 150mm non-foiled (pack of 10)
	UFLEX123		Uflex overlay panel 16mm x 150mm foiled (pack of 10)
	UFLEX124		Uflex overlay panel 16mm x 200mm non-foiled (pack of 10)
	UFLEX125		Uflex overlay panel 16mm x 200mm foiled (pack of 10)
HEAT EMISSION PLATES	UFLEX47		Uflex heat emission plate double 400mm (pack of 28)
	UFLEX47S		Uflex heat emission double 400mm (single)
CONTROLS	UFLEX62		Uflex Neostat V2
	UFLEX63		Uflex Edge With Mobus
	UFLEX117		Uflex NeoAir V2-M Wireless Programmable Thermostat
	UFLEX118		Uflex UH8-RF V2 Wiring Centre (for NeoAir)
	UFLEX64		Uflex UH8 Wiring Center 8 Zones Underfloor
	UFLEX65		Uflex Floor/Air Sensor Underfloor
	UFLEX66		Uflex Sensor Box Underfloor
	UFLEX67		Uflex Thimble Sensor - Underfloor
	UFLEX68		Uflex Wireless Air Sensor - Underfloor
	UFLEX69		Uflex Wireless Door Contact - Underfloor
	UFLEX70		Uflex Hub - Underfloor
	UFLEX71		Uflex 230v Actuator Underfloor

Uflex Underfloor Heating

	PRODUCT CODE	IMAGES	DESCRIPTION
ACCESSORIES	UFLEX22		Uflex Conduit 28/23 Black 50m
	UFLEX23		Uflex Multi Edging Strip With Foil Pe 50m 150x10mm
	UFLEX24		Uflex Tacker Pipe Clip Long 55mm (Pack Of 300)
	UFLEX26		Uflex Compression Adapter 16x2,0-G3/4"Fleuro
	UFLEX27		Uflex MINI Nubfoil 8pce, 6.2m² 1100x700x12mm
	UFLEX28		Uflex MINI Edging Strip (Self Adhesive) 20m 80x8mm
	UFLEX44		Uflex Fix Clamp Track With Glue 14-20mm C/C 50mm 1m (Pack Of 100)
	UFLEX44S		Uflex Fix Clamp Track With Glue 14-20mm C/C 50mm 1m (Single)
	UFLEX50		Uflex Compression Repair Connector
	UFLEX51		Uflex MINI Compression Coupling
	UFLEX105		Pex/Al/Pex Eurocone Coupling Set 16mm
	UFLEX110		Uflex Limit Thermostat For Pump/Mixer Uflex109
	UFLEX111		Uflex Manifold Low Loss Header
	UFLEX112		Uflex Connection Angle Set
	TOOLS	UFLEX91	
UFLEX116			Uflex MINI Pipe Bend Support - 10mm UFH Pipe
UFLEX115			Eurocone Coupling for Uflex MINI pipe 10X1.3
UFLEX29			Uflex Multi Uncoiler Telescop
UFLEX30			Uflex Tacker Clip Stapler Magazine 14-20mm L=700m=Mm
ULFEX57			Uflex Multi Layer Tube Cutter (26mm)



Step it up

with Uflex



£150
CASH BACK

on all Uflex underfloor heating orders over £1500*

Try our free Underfloor heating design service.
Send your plans to design@grantuk.com



Scan to read more, submit a claim or read the full T&C's.

SCAN ME

*Cash back promotion available on all Uflex and Uflex MINI orders placed between 1st January 2023-30th June 2023. Order retail value must be over £1500. Full Terms & Conditions apply.

Afinia Aluminium Radiators



- Horizontal & vertical options
- Highly responsive
- Ideal for low temperature systems such as ASHP's
- Up to 15 year guarantee (subject to full T&C's)

Standard

Code	Panels	Output W ΔT30	Output W ΔT50	Height (mm)	Width (mm)	Depth (mm)	Weight Empty (kg)	Weight Full (kg)
GALU4306KIT	6	288	552	430	480	95	6.06	7.56
GALU4308KIT	8	384	736	430	640	95	8.08	10.08
GALU43010KIT	10	480	920	430	800	95	10.10	12.60
GALU43012KIT	12	576	1104	430	960	95	12.12	15.12
GALU43014KIT	14	672	1288	430	1120	95	14.14	17.64
GALU5806KIT	6	366	744	580	480	95	8.10	10.14
GALU5808KIT	8	488	992	580	640	95	10.80	13.52
GALU58010KIT	10	610	1240	580	800	95	13.50	16.90
GALU58012KIT	12	732	1488	580	960	95	16.20	20.28
GALU58014KIT	14	854	1736	580	1120	95	18.90	23.66
GALU58015KIT	15	915	1860	580	1200	95	20.25	25.35
GALU6806KIT	6	432	852	680	480	95	9.60	11.94
GALU6808KIT	8	576	1136	680	640	95	12.80	15.92
GALU68010KIT	10	720	1420	680	800	95	16.00	19.90
GALU68012KIT	12	864	1704	680	960	95	19.20	23.88
GALU68014KIT	14	1008	1988	680	1120	95	22.40	27.86
GALU68015KIT	15	1080	2130	680	1200	95	24.00	29.85

Vertical

GALUV18426KIT	6	816	1626	1842	480	80	15.48	19.56
GALUV18428KIT	8	1088	2168	1842	640	80	20.64	26.08
GALUV20426KIT	6	882	1758	2042	480	80	16.86	21.36
GALUV20428KIT	8	1176	2344	2042	640	80	22.48	28.48

This leaflet is accurate at the time of printing but as Grant UK has a policy of continual improvement it may be superseded. We reserve the right to amend specifications without prior notice. The statutory rights of the consumer are not affected.

All products manufactured under I.S. EN ISO 9001. Grant UK additionally holds ISO 14001 accreditation.

™THE GRANT 'EZ-FIT FLUE' SYSTEM is a trade mark of Grant Engineering Limited.

©Grant Aeron³, Grant Uflex, Afinia, Grant Spira, Grant Vecta, Grant SpiraVac, Grant SpiraPod, Grant Vortex, Grant VortexBlue, Grant VortexAir, Grant Solar, Grant Aurora, Grant Sahara, Grant CombiSOL, Grant WinterSOL, Grant MonoWave, Grant DuoWave, Grant ThermaWave, Euroflame and Multi Pass are registered trade marks of Grant Engineering Limited. The contents of this leaflet are fully protected by copyright and nothing can be reproduced without permission from Grant UK.



Grant Engineering (UK) Ltd

t: +44 (0)1380 736920

sales@grantuk.com | www.grantuk.com

