



## General Information

On delivery, the product should be inspected for any damage, and the batch information should be noted in case it is needed later. If there are any issues, please report them immediately and do not commence installation.

Always test a small, discrete area of paving with the grout before full installation to ensure compatibility. Failure to test the chosen paving for suitability with the jointing compound will be the liability of the installer and not Marshalls Plc.



## Health and Safety Information

Safe working practices should be employed at all times during the construction process and all necessary Personal Protective Equipment (PPE) should be worn.



## Prior to use

**Please Note:** Weatherpoint 365 is not suitable for Marble and Granite Paving.

### Equipment:

- Stiff Bristle Brush
- Soft Bristle Brush
- Hose Pipe
- Marshalltown Jointer or similar tool

**During Use:** The product should be used 1 hour from exiting the vacuum pack.

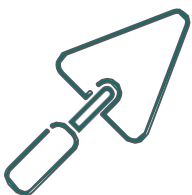
**Storage after Use:** Any material left over can be stored as long as the compound is covered by at least 80mm (3 inches) of water. Product can then be stored for up to 3 months as long as the product remains fully immersed in water.

**Weather:** Minimum laying temperatures 5°C

## Prior to Installation

All paving must be laid on a full mortar bed and the paving unit primed with a slurry adhesive. Paving must never be installed on a spot bed.

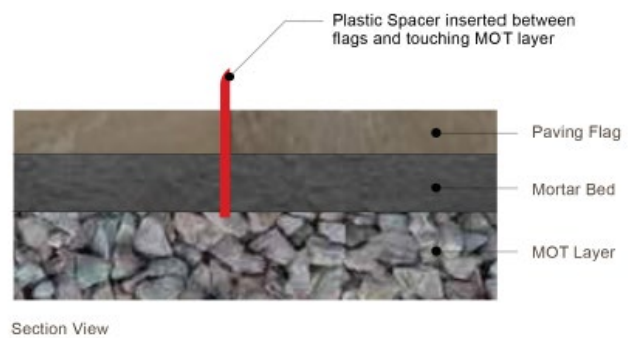
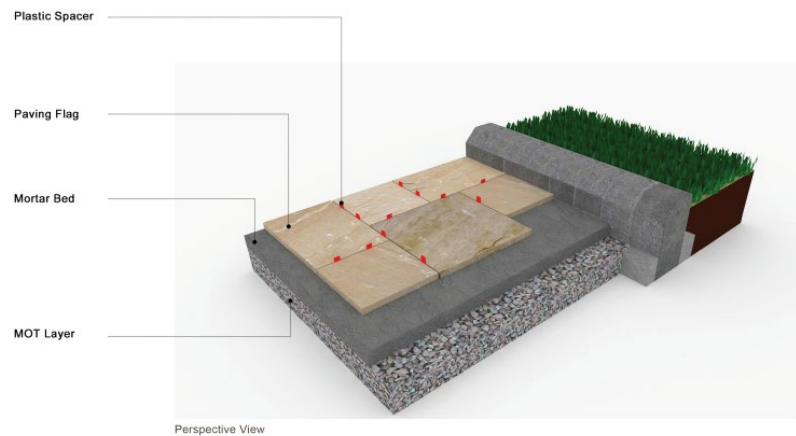
The installation must allow for free-flowing drainage. To do this, you must install drainage ports into the mortar bed. You can do this by removing any excess mortar in the joint to the full depth of your chosen paving flag.



Then insert spacers every 300mm on all sides of your paving, so they are touching the top of the MOT Type 1. This process will then create an unhindered flow to the sub soil.

The image below demonstrates the use of spacers during the installation process:

Ensure drainage ports have been installed before applying Weatherpoint 365 (see below)

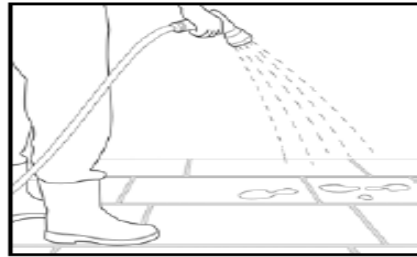


## Installation of Weatherpoint 365

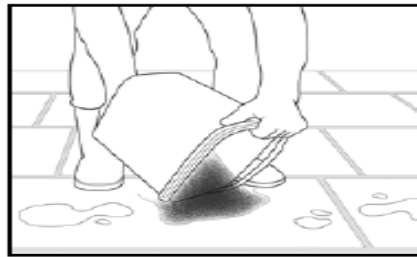
**Please Note:** Whether you are installing Weatherpoint 365 in the rain or the dry, always thoroughly saturate the paved area with a hose and leave it for 10 minutes to absorb into your chosen paving. Re-saturate again before installing the product.

In warm and sunny conditions (+20°C) do not allow the paving to dry out until installation of Weatherpoint 365 has been completed.

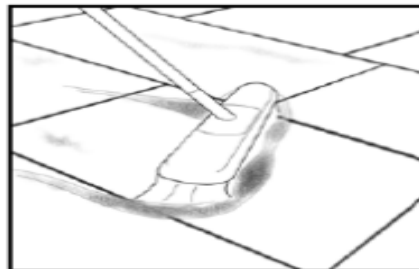
1. Thoroughly saturate the paving surface. It is impossible to over water the paved area. Failure to wet the paving correctly could result in temporary staining of the paving surface.



2. Open the tub and cut the vacuum bag open. Pour the joint compound material on the paved surface, and then begin to brush it into the joints with a stiff bristle sweeping brush.



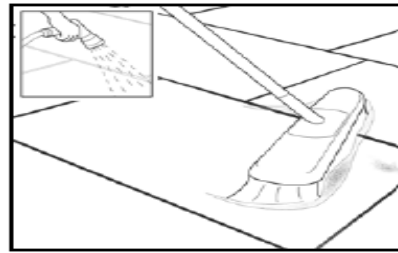
3. Brush the material in to the joint diagonally (at a 45° angle). Ensure that the joint void is completely filled. See the illustration below. The jointing material should be used within one hour of pouring the vacuum pack.



4. Strike off the joint using a Marshalltown jointer or similar tool. Top up any hungry joints with more jointing material and strike again if required. On smaller joints and to get the jointing material deeper into the joint, delicately chop in with the side of a trowel or similar tool, being careful not to strike the surface of the paving. Carry out this procedure prior to striking off. If you require a smoother 'struck' finish to your joint, allow the joint to dry out a little and iron the joint using a Marshalltown jointer or similar.



5. To finish the process, gently spray the surface with a wide angled spray and brush excess joint compound off the surface using a soft bristled brush.



Laying and jointing operations should be discontinued (and any open work face covered) if weather conditions are such that the performance of the paving may be jeopardised. Laying operations should not be undertaken when the temperature is below 5°C on a falling thermometer. All unfinished areas and stockpiles of materials should be covered in the advent of inclement weather to prevent saturation.



### **Curing Time**

Weatherpoint 365 can be walked on immediately after the installation has been completed. During this time, you can use your patio, but you should stay off the joint until the full cure has taken place.

Weatherpoint 365 will start to cure after 3 days and will achieve its final cure after 30 days.

**Please note:** Lower temperatures will lengthen the curing time and higher temperatures will accelerate the curing time. Additionally, once installed, Weatherpoint 365 will not start the curing process until dry weather and the cessation of rain.

Minimum laying temperature 5°C and rising.