



COLOURS

# Canterra®

subtly embossed flagstones

AG Flagstones

Canterra®  
colours

## DEPTHS



40  
Millimetres

## FINISH

Em

Embossed



400 x  
400mm



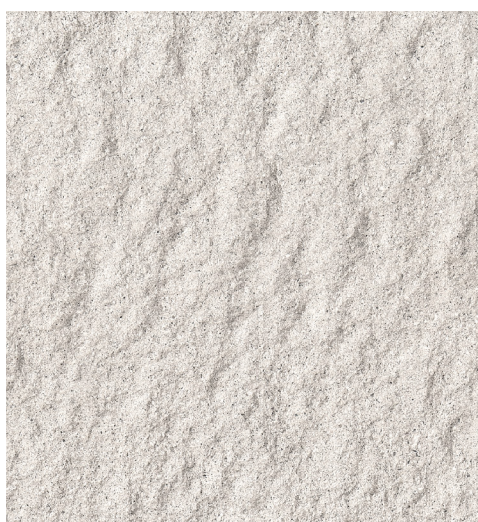
600 x  
400mm

## COLOURS

For 'Stock Information' on colours availability - see page 3.



SLATE new



SILVER new



SAHARA



Frost  
Resistant



Pedestrian  
Use



Abrasion  
Resistant

# Canterra®

subtly embossed flagstones

## DEPTHS

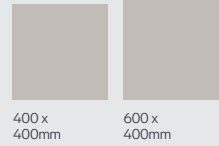


40  
Millimetres

## FINISH



Embossed



400 x  
400mm

600 x  
400mm

Canterra®  
technical information

## STANDARDS + PERFORMANCE

<b>Product Type</b>	Subtly embossed flagstones
<b>Manufactured to</b>	hEN 1339:2003
<b>Surface Layer</b>	Durable and hard wearing with a minimum surface layer of 8mm.
<b>Granite Content</b>	Not less than 50% natural granite and quartz aggregate in surface layer
<b>Efflorescence</b>	State-of-the-art factory controlled vapour curing significantly reduces this naturally occurring chemical reaction
<b>Bending Strength</b>	>3.5Mpa. This pressure applies to all sizes and depths. For specific force performance on a given size or depth please contact our Technical Specification Department
<b>Slip / Skid Resistance</b>	(PTV) >60 low potential for slip. Specific slip / skid resistance test results are available on request from our Technical Specification Department
<b>Installed to</b>	BS 7533-4:2006
<b>NBS Plus</b>	Q25 315

## SUSTAINABILITY

<b>Energy Use</b>	100% renewable
<b>Water Used</b>	100% recycled water
<b>Recyclable</b>	100% of this product can be recycled
<b>Manufacturing</b>	Produced in the UK using responsibly sourced materials
<b>Non-Primary Materials</b>	52 – 60% (surface layer)
<b>Waste Wood + Plastic</b>	100% recycled
<b>BREEAM</b>	A Rating – according to the Green Guide to Specification 4th edition 2009
	A+ Rating can be achieved when used in conjunction with a prepared recycled sub-base

## BOUND SYSTEM

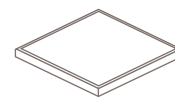
AG's preference is that installers use open joints when laying Canterra®, whereby >5mm joints are created and filled with a solid jointing compound. This is the most effective method of laying the product to minimise the visual impact of the variations on the surface of the product. The solid jointing compound enhances the overall appearance and will also help to reduce ongoing maintenance of the product.

## UNBOUND SYSTEM

When using an unbound system AG recommend close jointing Canterra®. Joints of between 2mm and 5mm should be created when laying with fine, dry jointing-sand used to fill the joints. This will help to reduce the visual appearance of allowable tolerances. The installer should ensure jointing sands are brushed in to completely fill the joints.

## EDGES

Canterra® Supplied with a less than 3mm straight chamfer edge as standard.



Straight Chamfer

## SPACER NIBS

No formed spacer.

## FINISH

Canterra® has been designed to create a 'naturally undulating old courtyard' effect. This effect replicates the uneven surface of natural stone with a randomly undulating surface. The surface profile varies in height between 0mm and 3mm.

## AG RECOMMENDATIONS

### Close Jointing

AG recommends a close joint of between 2mm - 5mm as per BS 7533 to cater for product alignment (butt jointing should be avoided).

### Jointing Sand

AG recommends that silver and slate coloured products are jointed with AG's Granite Sand.

### Colour blending

AG recommends that products are blended from 3 packs from alternate sides using full vertical sections.

Please contact our Technical Specification Department for further details.

## ADVICE + GUIDANCE

For advice and guidance on ordering, installation, good site practice, etc. visit our website:

[www.ag.uk.com/advice+guidance](http://www.ag.uk.com/advice+guidance)

For maintenance guidance and health and safety advice visit our website:

[www.ag.uk.com/maintenance](http://www.ag.uk.com/maintenance)



Frost  
Resistant



Pedestrian  
Use



Abrasion  
Resistant

SPECIFICATION REFERENCE: NBS PLUS: Q25 SLAB/BRICK/SETT/COBBLE PAVINGS: 31, 315; hEN: 1339:2003



T 028 8778 4208 | GB Sales T 0121 747 0202 | E [specifications@ag.uk.com](mailto:specifications@ag.uk.com)

[AG.UK.COM](http://AG.UK.COM)

# Canterra®

subtly embossed flagstones

## DEPTHS



40  
Millimetres

## FINISH

Em

Embossed



400 x  
400mm



600 x  
400mm

Canterra®  
stock information

## STOCK INFORMATION

Standard product depth	Size (mm)	In Stock	Available Colours	m <sup>2</sup> per pack	Units per m <sup>2</sup>	Units per pack	Unit weight (kg)	Weight per pack (t)	Packs per 8 wheeler	Packs per unit lorry
40mm	600 x 400	Yes	Silver / Slate / Sahara	12	4.16	50	22.95	1.2	12	GB 23 / IRE 20
	400 x 400	Yes	Silver / Slate / Sahara	16	6.25	100	16.09	1.609	10	GB 17 / IRE 15

Information for a specific colour / depth is available on request from our Technical Specification Department.



Frost  
Resistant



Pedestrian  
Use



Abrasion  
Resistant

## MANUFACTURING

Canterra® flags are manufactured from specially selected natural granite aggregates. They are finished with a subtle embossed surface.  
PLANT OF MANUFACTURE: Made at our Fivemiletown production plant.

## CERTIFICATION

ISO 9001  
ISO 14001  
ISO 45001  
CE Marking

Quality Management.  
Environmental Management.  
Occupational Health and Safety Management.  
Download our Declaration of Performance (DOP) data at: [www.ag.uk.com/resources](http://www.ag.uk.com/resources)