

EXTERIOR CARRIAGE BOLTS & NUTS



EXTERIOR CARRIAGE BOLTS

EXTERIOR (GREEN ORGANIC)



CORROSION RATING



Urban & industrial areas with a low salt atmosphere

A domed head bolt with a square anti spin shoulder mainly used for clamping timber or attaching ironmongery to timber.

Coated with a patented multi-layer corrosion resistant plating to withstand 500 hours

salt spray making it ideal for external applications.

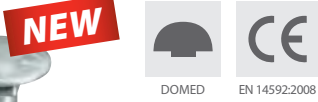
Manufactured to DIN 603, DIN 934 and DIN 125-A.

Product Code	Size (mm)	Nut Socket Size (mm)	Pack Qty (pcs)	Carton Qty (packs)
BAG				
10100INCB	M10 x 100	17	10	10
10150INCB	M10 x 150	17	10	6
10160INCB	M10 x 160	17	10	6
10200INCB	M10 x 200	17	10	6
10220INCB	M10 x 220	17	10	5

TYPE - IND

SUB TYPE - IND06

EXTERIOR (SILVER ORGANIC)



CORROSION RATING



Urban & industrial areas with a low salt atmosphere

A domed head bolt with a square anti spin shoulder mainly used for clamping timber or attaching ironmongery to timber.

Coated with a patented multi-layer corrosion resistant plating to withstand 1,000 hours

salt spray test making it ideal for external applications.

Supplied with hex nuts and form A washers.

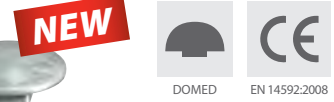
Product Code	Size (mm)	Nut Socket Size (mm)	Pack Qty (pcs)	Carton Qty (packs)
TIMBAG				
0640CBI	M6 x 40	10	10	5
0650CBI	M6 x 50	10	10	5
0675CBI	M6 x 75	10	10	5
06100CBI	M6 x 100	10	10	5
0850CBI	M8 x 50	13	10	5
0875CBI	M8 x 75	13	10	5
08100CBI	M8 x 100	13	10	5
08110CBI	M8 x 110	13	10	5
08130CBI	M8 x 130	13	10	5
08150CBI	M8 x 150	13	10	5
1075CBI	M10 x 75	17	10	5
10100CBI	M10 x 100	17	10	5
10120CBI	M10 x 120	17	10	5
10130CBI	M10 x 130	17	10	5
10150CBI	M10 x 150	17	10	5
10180CBI	M10 x 180	17	10	5
1275CBI	M12 x 75	19	10	5
12100CBI	M12 x 100	19	10	5
12130CBI	M12 x 130	19	10	5

TYPE - CAB

SUB TYPE - CAB05

HDG CARRIAGE BOLTS

HOT DIPPED GALVANISED



CORROSION RATING



Urban and industrial areas with a moderate salt atmosphere

A domed head bolt with a square anti spin shoulder mainly used for clamping timber or attaching ironmongery to timber.

NOTE: Fully threaded up to and including 150mm. Partially threaded thereafter. Nut included.

Manufactured to DIN 603 and DIN 934

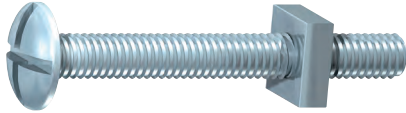
Product Code	Size (mm)	Nut Socket Size (mm)	Pack Qty (pcs)	Carton Qty (packs)
BOX				
0850CBG	M8 x 50	13	100	9
0875CBG	M8 x 75	13	50	9
08130CBG	M8 x 130	13	50	6
08150CBG	M8 x 150	13	25	10
1075CBG	M10 x 75	17	50	8
10100CBG	M10 x 100	17	25	9
10110CBG	M10 x 110	17	25	9
10130CBG	M10 x 130	17	25	10
10150CBG	M10 x 150	17	25	6
10180CBG	M10 x 180	17	25	6
10200CBG	M10 x 200	17	10	10
1275CBG	M12 x 75	19	25	9
12100CBG	M12 x 100	19	25	6
12110CBG	M12 x 110	19	25	6
12130CBG	M12 x 130	19	10	10
12150CBG	M12 x 150	19	10	10
12180CBG	M12 x 180	19	10	10
12200CBG	M12 x 200	19	10	10

TYPE - CAB

SUB TYPE - CAB04

SCREWS
FASTENERS & FIXINGS
ANCHORS
NAILS
TAPES & ADHESIVES
BUILDING CHEMICALS
POWERTOOL ACC.
HAND TOOLS & ACC.
SITE PROTECTION
BUILDERS METAL WORK
SECURITY & IRONMONGERY
GATE & FENCE HARDWARE

ROOFING BOLTS



Manufactured with a large flat head, making it ideal for clamping thin sheet metal, plastic and wood.



BAG/PACK

ZINC

Product Code	Size (mm)	Nut Size (mm)	Qty	Carton Qty (Pack)	Carton Qty
BAG					
0612RBB	M6 x 12	M6	150	5	750
0620RBB	M6 x 20	M6	140	5	700
0625RBB	M6 x 25	M6	130	5	650
0630RBB	M6 x 30	M6	120	5	600
0640RBB	M6 x 40	M6	110	5	550
0650RBB	M6 x 50	M6	90	5	450
0660RBB	M6 x 60	M6	80	5	400
0680RBB	M6 x 80	M6	70	5	350
PACK					
0612RBP	M6 x 12	M6	14	5	70
0620RBP	M6 x 20	M6	12	5	60
0625RBP	M6 x 25	M6	10	5	50
0630RBP	M6 x 30	M6	10	5	50
0640RBP	M6 x 40	M6	8	5	40
0650RBP	M6 x 50	M6	8	5	40
0660RBP	M6 x 60	M6	6	5	30
0680RBP	M6 x 80	M6	4	5	20
06100RBP	M6 x 100	M6	2	5	10

TYPE - BAG/PAK

SUB TYPE - BAG23/PAK23

BOX

ZINC

Product Code	Size (mm)	Nut Size (mm)	Qty	Carton Qty (Box)	Carton Qty	Pallet Qty (Box)	Pallet Qty
BOX							
0512RB	M5 x 12	M5	200	18	3,600	648	129,600
0530RB	M5 x 30	M5	200	10	2,000	300	60,000
0608RB	M6 x 08	M6	200	18	3,600	648	129,600
0612RB	M6 x 12	M6	200	10	2,000	300	60,000
0616RB	M6 x 16	M6	200	10	2,000	300	60,000
0620RB	M6 x 20	M6	200	10	2,000	300	60,000
0625RB	M6 x 25	M6	100	18	1,800	648	64,800
0630RB	M6 x 30	M6	100	18	1,800	648	64,800
0635RB	M6 x 35	M6	100	10	1,000	300	30,000
0640RB	M6 x 40	M6	100	10	1,000	300	30,000
0650RB	M6 x 50	M6	100	10	1,000	300	30,000
0660RB	M6 x 60	M6	100	8	800	240	24,000
0670RB	M6 x 70	M6	100	8	800	240	24,000
0680RB	M6 x 80	M6	100	8	800	240	24,000
06100RB	M6 x 100	M6	100	8	800	240	24,000
0825RB	M8 x 25	M8	100	10	1,000	300	30,000
0830RB	M8 x 30	M8	100	10	1,000	300	30,000
0840RB	M8 x 40	M8	100	8	800	240	24,000
0850RB	M8 x 50	M8	100	8	800	240	24,000
0860RB	M8 x 60	M8	100	8	800	240	24,000
0880RB	M8 x 80	M8	50	8	400	240	12,000
08100RB	M8 x 100	M8	50	8	400	240	12,000
08120RB	M8 x 120	M8	50	8	400	240	12,000
08140RB	M8 x 140	M8	50	8	400	240	12,000
08160RB	M8 x 160	M8	50	6	300	216	10,800
08180RB	M8 x 180	M8	50	6	300	216	10,800
08200RB	M8 x 200	M8	50	6	300	216	10,800

TYPE - ROB

SUB TYPE - ROB01

CABLE TRAY BOLTS

CABLE TRAY BOLT & FLANGE NUT (DIN6923)



Specifically designed to provide a rapid and secure fixing when erecting cable trays. Flange nut prevents the nut from falling into the socket driver.



BOX

ZINC

Product Code	Size (mm)	Nut A/F (mm)	Qty	Carton Qty (Box)	Carton Qty
BOX					
CTB612	M6 x 12	10	200	16	3,200
CTB616	M6 x 16	10	200	16	3,200
CTB620	M6 x 20	10	200	16	3,200
CTB625	M6 x 25	10	200	16	3,200

TYPE - ROB

SUB TYPE - ROB02

ZINC PLATED THREADED BAR

ALSO AVAILABLE IN STAINLESS STEEL

GRADE 4.8 THREADED BAR (DIN975)



Commonly used with drop in anchors for suspending cable trays from ceilings or can be cut to a required length and used with chemical resin.

BUNDLES

ZINC

Product Code	Thread Ø x Length (mm)	Qty
300MM BUNDLE		
06300TBZ	M6 x 300	10
08300TBZ	M8 x 300	10
10300TBZ	M10 x 300	10
12300TBZ	M12 x 300	10
16300TBZ	M16 x 300	10
1000MM BUNDLE		
06TBZ	M6 x 1000	10
08TBZ	M8 x 1000	10
10TBZ	M10 x 1000	10
12TBZ	M12 x 1000	10
16TBZ	M16 x 1000	10
20TBZ	M20 x 1000	5

TYPE - TBA

SUB TYPE - TBA02/01

GRADE 8.8 HIGH TENSILE THREADED BAR



Manufactured from grade 8.8 high tensile carbon steel. Commonly used with drop in anchors for suspending cable trays from ceilings or can be cut to a required length and used with chemical resin.

BUNDLES

ZINC

Product Code	Thread x Length (mm)	Qty
1000MM BUNDLE		
06TBZHT	M6 x 1000	10
08TBZHT	M8 x 1000	10
10TBZHT	M10 x 1000	10
12TBZHT	M12 x 1000	10
16TBZHT	M16 x 1000	10
20TBZHT	M20 x 1000	5

TYPE - TBA

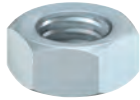
SUB TYPE - TBA04

ZINC PLATED NUTS

ALSO AVAILABLE IN STAINLESS STEEL



HEX FULL NUT (DIN934)



A traditional nut used for all bolting and fastening applications.

* Please note boxed are Class 8 to DIN 267-4

BULK/BOX/BAG/PACK ZINC

Product Code	Size (mm)	Height (mm)	A/F (mm)	Qty	Carton Qty (Pack)	Carton Qty
BULK BOX						
NH6ZBULK	M6	5.0	10	-	1	12,000
NH8ZBULK	M8	6.5	13	-	1	5,500
NH10ZBULK	M10	8.0	17	-	1	2,500
NH12ZBULK	M12	10.0	19	-	1	1,700
NH16ZBULK	M16	13.0	24	-	1	800
NH20ZBULK	M20	16.0	30	-	1	400
BOX*						
NH4Z	M4	3.2	7	1,500	20	30,000
NH5Z	M5	4.0	8	1,000	20	20,000
NH6Z	M6	5.0	10	500	20	10,000
NH8Z	M8	6.5	13	200	20	4,000
NH10Z	M10	8.0	17	100	20	2,000
NH12Z	M12	10.0	19	100	12	1,200
NH16Z	M16	13.0	24	100	6	600
NH20Z	M20	16.0	30	50	6	300
BAG						
6HNUTZB	M6	5	10	600	5	3,000
8HNUTZB	M8	6.5	13	300	5	1,500
10HNUTZB	M10	8	17	130	5	650
12HNUTZB	M12	10	19	90	5	450
16HNUTZB	M16	13	24	45	5	225
20HNUTZB	M20	16	30	20	5	100
PACK						
6HNUTZP	M6	5	10	40	10	400
8HNUTZP	M8	6.5	13	30	10	300
10HNUTZP	M10	8	17	20	10	200
12HNUTZP	M12	10	19	10	10	100
16HNUTZP	M16	13	24	4	10	40
20HNUTZP	M20	16	30	2	10	20

TYPE - 934/934/BAG/PAK SUB TYPE - 93402/93401/BAG27/PAK27

HEX CONNECTOR NUT (DIN6334)



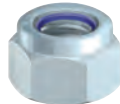
For extending the length of threaded bar.

BOX/BAG ZINC

Product Code	Size (mm)	Height (mm)	A/F (mm)	Qty	Carton Qty (Pack)	Carton Qty
BOX						
NC6Z	M6	18	10	200	12	2,400
NC8Z	M8	24	13	100	12	1,200
NC10Z	M10	30	17	100	4	400
NC12Z	M12	36	19	100	4	400
NC16Z	M16	48	24	50	4	200
NC20Z	M20	60	30	25	4	100
PACK						
NC8ZP	M8	24	13	4	10	40
NC10ZP	M10	30	17	2	10	20

TYPE - NUT/PAK SUB TYPE - NUT04/PAK99

NYLON NUT - TYPE P (DIN982)



Also known as locking nuts, designed to prevent the nut from loosening.

BULK/BOX/BAG/PACK ZINC

Product Code	Size (mm)	Height (mm)	A/F (mm)	Qty	Carton Qty (Pack)	Carton Qty
BULK BOX						
NP6ZBULK	M6	8.0	10	-	1	8,000
NP8ZBULK	M8	9.5	13	-	1	4,000
BOX						
NP6Z	M6	8.0	10	500	12	6,000
NP8Z	M8	9.5	13	200	12	2,400
NP10Z	M10	11.5	17	100	12	1,200
NP12Z	M12	14.0	19	100	8	800
NP16Z	M16	18.0	24	100	4	400
BAG						
6NPB	M6	8.0	10	300	5	1,500
8NPB	M8	9.5	13	300	5	1,500
10NPB	M10	11.5	17	130	5	650
12NPB	M12	14.0	19	90	5	450
16NPB	M16	18.0	24	45	5	225
PACK						
6NPP	M6	8.0	10	20	10	200
8NPP	M8	9.5	13	10	10	100
10NPP	M10	11.5	17	4	10	40
12NPP	M12	14.0	19	4	10	40
16NPP	M16	18.0	24	2	10	20

TYPE - NYN/BAG/PAK SUB TYPE - NYN02/BAG28/PAK28



WING NUT



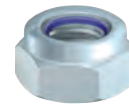
A light duty nut that is regularly tightened and removed by hand.

BOX/PACK ZINC

Product Code	Size (mm)	Qty	Carton Qty (Pack)	Carton Qty
BOX				
NW6Z	M6	300	12	3,600
NW8Z	M8	200	12	3,600
NW10Z	M10	100	12	3,600
NW12Z	M12	100	8	800
NW16Z	M16	50	4	200
PACK				
NW6ZP	M6	6	10	60
NW8ZP	M8	4	10	40
NW10ZP	M10	2	10	20

TYPE - NUT/PAK SUB TYPE - NUT02/PAK98

NYLON NUT - TYPE T (DIN985)



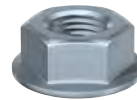
Type T hexagonal nylon nut with a metric thread. Sometimes known as a 'thin nut'.

BULK/BOX ZINC

Product Code	Size (mm)	Height (mm)	A/F (mm)	Qty	Carton Qty (Pack)	Carton Qty
BULK BOX						
NT6ZBULK	M6	6	10	-	1	11,000
NT8ZBULK	M8	8	13	-	1	5,000
BOX						
NT6Z	M6	6	10	500	16	8,000
NT8Z	M8	8	13	200	20	4,000
NT10Z	M10	10	17	100	16	1,600
NT12Z	M12	12	19	100	10	1,000
NT16Z	M16	16	24	100	6	600

TYPE - NYN SUB TYPE - NYN01

HEX SERRATED FLANGE NUT (DIN6923)



Designed to provide a larger clamping and locking force than a standard hex nut.

BOX ZINC

Product Code	Size (mm)	Height (mm)	A/F (mm)	Qty	Carton Qty (Pack)	Carton Qty
BOX						
NF6Z	M6	6	10	300	16	4,800
NF8Z	M8	8	13	200	16	3,200
NF10Z	M10	10	15	100	16	1,600
NF12Z	M12	12	18	100	8	800
NF16Z	M16	16	24	100	4	400
NF20Z	M20	20	30	50	4	200

TYPE - NUT SUB TYPE - NUT01

HEX DOME NUT (DIN1587)



A hexagonal dome nut with a metric thread. Ideal for protective or aesthetic uses.

BOX ZINC

Product Code	Size (mm)	Height (mm)	A/F (mm)	Qty	Carton Qty (Pack)	Carton Qty
BOX						
ND6Z	M6	12	10	200	20	4,000
ND8Z	M8	15	13	100	20	2,000
ND10Z	M10	18	17	100	8	800
ND12Z	M12	22	19	100	8	800
ND16Z	M16	28	24	100	4	400
ND20Z	M20	34	30	50	4	200

TYPE - NUT SUB TYPE - NUT03



STAINLESS STEEL FASTENERS

SUPERIOR CORROSION RESISTANCE

A2 Stainless steel offers an excellent resistance to corrosion which makes it perfect for many day to day external and corrosive applications.



SUSTAINABLE STAINLESS STEEL

Stainless steel is regarded as one of the most sustainable metals on the planet.



STAINLESS STEEL CARRIAGE BOLTS

SUPERIOR CORROSION RESISTANCE



SUSTAINABLE STAINLESS STEEL

CARRIAGE BOLT (DIN603)



DOMED

A cup square carriage bolt in A2 stainless steel. A full metric fine thread. **Nut not included.**

BOX

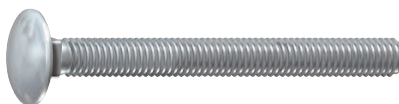
A2 / AUST SS

Product Code	Size (mm)	Qty	Carton Qty (Pack)	Carton Qty
BOX				
0625CBSS	M6 x 25	200	8	1,600
0630CBSS	M6 x 30	200	8	1,600
0640CBSS	M6 x 40	200	6	1,200
0650CBSS	M6 x 50	200	5	1,000
0675CBSS	M6 x 75	50	10	500
06100CBSS	M6 x 100	50	10	500
0860CBSS	M8 x 60	100	5	500
0875CBSS	M8 x 75	50	8	400
0880CBSS	M8 x 80	50	8	400
08100CBSS	M8 x 100	50	6	300
08130CBSS	M8 x 130	25	6	150
08150CBSS	M8 x 150	25	6	150
1075CBSS	M10 x 75	50	6	300
1090CBSS	M10 x 90	50	5	250
10110CBSS	M10 x 110	25	10	250
10120CBSS	M10 x 120	25	8	200
10130CBSS	M10 x 130	25	8	200
10150CBSS	M10 x 150	25	6	175
1275CBSS	M12 x 75	50	5	250
12100CBSS	M12 x 100	50	3	150
12110CBSS	M12 x 110	25	6	150
12130CBSS	M12 x 130	25	4	100
12150CBSS	M12 x 150	25	4	100

TYPE - CAS

SUB TYPE - CAS01

CARRIAGE BOLT (DIN603)



DOMED

A cup square carriage bolt in A2 stainless steel. A full metric fine thread. **Nut not included.**

BAG

A2 / AUST SS

Product Code	Size (mm)	Qty	Carton Qty (Pack)	Carton Qty
SMALL BAG				
0625CBSSX	M6 x 25	10	200	2,000
0630CBSSX	M6 x 30	10	100	1,000
0640CBSSX	M6 x 40	10	100	1,000
0650CBSSX	M6 x 50	10	100	1,000
0675CBSSX	M6 x 75	10	50	500
06100CBSSX	M6 x 100	10	50	500
0840CBSSX	M8 x 40	10	100	1,000
0850CBSSX	M8 x 50	5	100	500
0860CBSSX	M8 x 60	5	100	500
0875CBSSX	M8 x 75	5	100	500
0880CBSSX	M8 x 80	5	100	500
08100CBSSX	M8 x 100	5	50	250
08130CBSSX	M8 x 130	5	50	250
08150CBSSX	M8 x 150	5	50	250
1075CBSSX	M10 x 75	5	50	250
1090CBSSX	M10 x 90	5	50	250
10100CBSSX	M10 x 100	5	50	250
10110CBSSX	M10 x 110	5	50	250
10120CBSSX	M10 x 120	5	50	250
10130CBSSX	M10 x 130	5	50	250
10150CBSSX	M10 x 150	5	30	150
1275CBSSX	M12 x 75	5	50	250
12100CBSSX	M12 x 100	5	30	150
12110CBSSX	M12 x 110	5	30	150
12130CBSSX	M12 x 130	5	30	150
12150CBSSX	M12 x 150	5	20	100

TYPE - SSB

SUB TYPE - SSB05

CARRIAGE BOLT (DIN603) & NUT (DIN934)



DOMED

A cup square carriage bolt in A2 stainless steel. A full metric fine thread.

PACK

A2 / AUST SS

Product Code	Size (mm)	Nut A/F (mm)	Qty	Carton Qty (Pack)	Carton Qty
PACK					
08100CBSSP	M8 x 100	13	4	5	20
08130CBSSP	M8 x 130	13	3	5	15
08150CBSSP	M8 x 150	17	2	5	10
1075CBSSP	M10 x 75	17	3	5	15
10100CBSSP	M10 x 100	17	2	5	10
10120CBSSP	M10 x 120	17	2	5	10
10130CBSSP	M10 x 130	17	2	5	10
10150CBSSP	M10 x 150	13	2	5	10
12100CBSSP	M12 x 100	19	2	5	10
12130CBSSP	M12 x 130	19	2	5	10

TYPE - PAK

SUB TYPE - PAK65

STAINLESS STEEL SOCKET SCREWS

SUPERIOR CORROSION RESISTANCE



SUSTAINABLE STAINLESS STEEL

COUNTERSUNK SOCKET (DIN7991)



INTER. HEX

Designed for use in applications where the head is flush with joining parts.

BUTTON SOCKET (ISO7380)



INTER. HEX

Designed for applications that allow the head to protrude above the joining parts. Button head protects adjoining parts from scrapes or other damage.

CAP SOCKET (DIN912)



INTER. HEX

Socket head cap screws are designed to be used with the head protruding.

BOX/BAG

A2 / AUST SS

Product Code	Size (mm)	Hex Recess (mm)	Qty	Carton Qty (Pack)	Carton Qty
BOX					
616CSKSS	M6 x 16	5.0	500	10	5,000
620CSKSS	M6 x 20	5.0	200	20	4,000
625CSKSS	M6 x 25	5.0	200	16	3,200
825CSKSS	M8 x 25	6.0	100	20	2,000
830CSKSS	M8 x 30	6.0	100	14	1,400
SMALL BAG					
616CSKSSX	M6 x 16	5.0	10	500	5,000
620CSKSSX	M6 x 20	5.0	10	300	3,000
625CSKSSX	M6 x 25	5.0	10	300	3,000
825CSKSSX	M8 x 25	6.0	10	200	2,000
830CSKSSX	M8 x 30	6.0	10	100	1,000

TYPE - SOS/SSB

SUB TYPE - SOS01/SSB04

BOX/BAG

A2 / AUST SS

Product Code	Size (mm)	Hex Recess (mm)	Qty	Carton Qty (Pack)	Carton Qty
BOX					
612BUTSS	M6 x 12	5.0	500	12	6,000
616BUTSS	M6 x 16	5.0	500	10	5,000
620BUTSS	M6 x 20	5.0	500	10	5,000
625BUTSS	M6 x 25	5.0	200	15	3,000
630BUTSS	M6 x 30	5.0	200	14	2,800
825BUTSS	M8 x 25	6.0	100	16	1,600
SMALL BAG					
612BUTSSX	M6 x 12	5.0	10	500	5,000
616BUTSSX	M6 x 16	5.0	10	500	5,000
620BUTSSX	M6 x 20	5.0	10	300	3,000
625BUTSSX	M6 x 25	5.0	10	200	2,000
630BUTSSX	M6 x 30	5.0	10	200	2,000
825BUTSSX	M8 x 25	6.0	10	100	1,000

TYPE - SOS/SSB

SUB TYPE - SOS02/SSB10

BOX/BAG

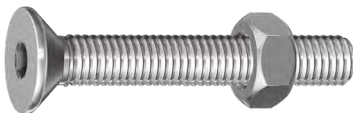
A2 / AUST SS

Product Code	Size (mm)	Hex Recess (mm)	Qty	Carton Qty (Pack)	Carton Qty
BOX					
516CAPSS	M5 x 16	4.0	500	10	5,000
520CAPSS	M5 x 20	4.0	500	12	6,000
616CAPSS	M6 x 16	5.0	200	20	4,000
620CAPSS	M6 x 20	5.0	200	16	3,200
625CAPSS	M6 x 25	5.0	200	14	2,800
820CAPSS	M8 x 20	6.0	200	8	1,600
825CAPSS	M8 x 25	6.0	200	7	1,400
SMALL BAG					
516CAPSSX	M5 x 16	4.0	10	100	1,000
520CAPSSX	M5 x 20	4.0	10	500	5,000
616CAPSSX	M6 x 16	5.0	10	500	5,000
620CAPSSX	M6 x 20	5.0	10	200	2,000
625CAPSSX	M6 x 25	5.0	10	200	2,000
820CAPSSX	M8 x 20	6.0	10	200	2,000
825CAPSSX	M8 x 25	6.0	10	100	1,000

TYPE - SOS/SSB

SUB TYPE - SOS01/SSB11

COUNTERSUNK SOCKET (DIN7991) & NUT (DIN934)



INTER. HEX

Designed for use in applications where the head is flush with joining parts.

BUTTON SOCKET (ISO7380) & NUT (DIN934)



INTER. HEX

Designed for applications that allow the head to protrude above the joining parts. Button head protects adjoining parts from scrapes or other damage.

CAP SOCKET (DIN912) & NUT (DIN934)



INTER. HEX

Socket head cap screws are designed to be used with the head protruding.

PACK

A2 / AUST SS

Product Code	Size (mm)	Hex Recess (mm)	Qty	Carton Qty (Pack)	Carton Qty
PACK					
616CSKSSP	M6 x 16	5.0	8	10	80
620CSKSSP	M6 x 20	5.0	8	10	80
625CSKSSP	M6 x 25	5.0	6	10	60
825CSKSSP	M8 x 25	6.0	4	10	40
830CSKSSP	M8 x 30	6.0	4	10	40

TYPE - PAK

SUB TYPE - PAK95

PACK

A2 / AUST SS

Product Code	Size (mm)	Hex Recess (mm)	Qty	Carton Qty (Pack)	Carton Qty
PACK					
612BUTSSP	M6 x 12	5.0	8	10	80
616BUTSSP	M6 x 16	5.0	8	10	80
620BUTSSP	M6 x 20	5.0	8	10	80
625BUTSSP	M6 x 25	5.0	6	10	60
630BUTSSP	M6 x 30	5.0	4	10	40
825BUTSSP	M8 x 25	6.0	4	10	40

TYPE - PAK

SUB TYPE - PAK93

PACK

A2 / AUST SS

Product Code	Size (mm)	Hex Recess (mm)	Qty	Carton Qty (Pack)	Carton Qty
PACK					
516CAPSSP	M5 x 16	4.0	8	10	80
520CAPSSP	M5 x 20	4.0	8	10	80
616CAPSSP	M6 x 16	5.0	8	10	80
620CAPSSP	M6 x 20	5.0	8	10	80
625CAPSSP	M6 x 25	5.0	6	10	60
820CAPSSP	M8 x 20	6.0	4	10	40
825CAPSSP	M8 x 25	6.0	4	10	40

TYPE - PAK

SUB TYPE - PAK94

SCREWS
FASTENERS & FIXINGS
ANCHORS
NAILS
TAPES & ADHESIVES
BUILDING CHEMICALS
POWERTOOL ACC.
HAND TOOLS & ACC.
SITE PROTECTION
BUILDERS METAL WORK
SECURITY & IRONMONGERY
GATE & FENCE HARDWARE

STAINLESS STEEL SET SCREWS

SUPERIOR CORROSION RESISTANCE



SUSTAINABLE STAINLESS STEEL

SET SCREW (DIN933)



A fully metric threaded bolt used in a wide variety of applications.
Nut not included.

HEX

BOX

A2 / AUST SS

Product Code	Size (mm)	Socket Size (mm)	Qty	Carton Qty (Pack)	Carton Qty
BOX					
S616SS	M6 x 16	10	200	20	4,000
S620SS	M6 x 20	10	200	16	3,200
S625SS	M6 x 25	10	200	14	2,800
S630SS	M6 x 30	10	200	14	2,800
S640SS	M6 x 40	10	200	10	2,000
S650SS	M6 x 50	10	200	8	1,600
S820SS	M8 x 20	13	200	10	2,000
S825SS	M8 x 25	13	200	7	1,400
S830SS	M8 x 30	13	100	14	1,400
S835SS	M8 x 35	13	100	14	1,400
S840SS	M8 x 40	13	100	12	1,200
S850SS	M8 x 50	13	100	8	800
S860SS	M8 x 60	13	100	7	700
S880SS	M8 x 80	13	50	10	500
S8100SS	M8 x 100	13	50	8	400
S1020SS	M10 x 20	17	100	10	1,000
S1025SS	M10 x 25	17	100	10	1,000
S1030SS	M10 x 30	17	100	8	800
S1035SS	M10 x 35	17	100	8	800
S1040SS	M10 x 40	17	100	7	700
S1050SS	M10 x 50	17	50	12	600
S1060SS	M10 x 60	17	50	8	400
S1070SS	M10 x 70	17	50	8	400
S1080SS	M10 x 80	17	50	7	350
S10100SS	M10 x 100	17	50	7	350
S1230SS	M12 x 30	19	50	10	500
S1240SS	M12 x 40	19	50	8	400
S1250SS	M12 x 50	19	50	8	400
S1260SS	M12 x 60	19	50	7	350

TYPE - SSS

SUB TYPE - SSS01

SET SCREW (DIN933)



A fully metric threaded bolt used in a wide variety of applications.
Nut not included

HEX

BAG

A2 / AUST SS

Product Code	Size (mm)	Socket Size (mm)	Qty	Carton Qty (Pack)	Carton Qty
SMALL BAG					
S616SSX	M6 x 16	10	10	20	2,000
S620SSX	M6 x 20	10	10	16	2,000
S625SSX	M6 x 25	10	10	14	2,000
S630SSX	M6 x 30	10	10	14	2,000
S640SSX	M6 x 40	10	10	10	1,000
S650SSX	M6 x 50	10	10	8	2,000
S820SSX	M8 x 20	13	10	10	2,000
S825SSX	M8 x 25	13	10	7	1,000
S830SSX	M8 x 30	13	10	14	1,000
S835SSX	M8 x 35	13	10	14	1,000
S840SSX	M8 x 40	13	10	12	1,000
S850SSX	M8 x 50	13	5	8	500
S860SSX	M8 x 60	13	5	7	500
S880SSX	M8 x 80	13	5	10	500
S8100SSX	M8 x 100	13	5	8	250
S1020SSX	M10 x 20	17	10	10	1000
S1025SSX	M10 x 25	17	10	10	1000
S1030SSX	M10 x 30	17	10	8	500
S1035SSX	M10 x 35	17	10	8	500
S1040SSX	M10 x 40	17	10	7	500
S1050SSX	M10 x 50	17	5	12	500
S1060SSX	M10 x 60	17	5	8	250
S1070SSX	M10 x 70	17	5	8	250
S1080SSX	M10 x 80	17	5	7	250
S10100SSX	M10 x 100	17	5	7	250
S1230SSX	M12 x 30	19	10	10	500
S1240SSX	M12 x 40	19	10	8	300
S1250SSX	M12 x 50	19	10	8	300
S1260SSX	M12 x 60	19	5	7	250

TYPE - SSB

SUB TYPE - SSB03

SET SCREW (DIN933) & NUT (DIN934)



A fully metric threaded bolt used in a wide variety of applications.

HEX

PACK

A2 / AUST SS

Product Code	Size (mm)	Socket Size (mm)	Qty	Carton Qty (Pack)	Carton Qty
PACK					
S616SSP	M6 x 16	10	8	10	800
S620SSP	M6 x 20	10	8	10	800
S625SSP	M6 x 25	10	6	10	600
S650SSP	M6 x 50	10	4	10	400
S820SSP	M8 x 20	13	6	10	600
S825SSP	M8 x 25	13	4	10	400
S840SSP	M8 x 40	13	2	10	200
S850SSP	M8 x 50	13	2	10	200
S1025SSP	M10 x 25	13	2	10	200
S1030SSP	M10 x 30	17	2	10	200
S1040SSP	M10 x 40	17	2	10	200
S1050SSP	M10 x 50	17	2	10	200
S1070SSP	M10 x 70	17	2	10	200
S10100SSP	M10 x 100	17	2	10	200
S1230SSP	M12 x 30	19	2	10	200
S1240SSP	M 12 x 40	19	2	10	200
S1250SSP	M12 x 50	19	2	10	200

TYPE - PAK

SUB TYPE - PAK66

STAINLESS STEEL THREADED BAR (DIN975)

SUPERIOR CORROSION RESISTANCE



SUSTAINABLE STAINLESS STEEL



Commonly used with drop in anchors for suspending cable trays from ceilings or can be cut to a required length and used with chemical resin.

BUNDLE

Product Code	Thread Ø x Length (mm)	Bundle Qty
06TBSS	M6 x 1000	5
08TBSS	M8 x 1000	5
10TBSS	M10 x 1000	5
12TBSS	M12 x 1000	5
16TBSS	M16 x 1000	5
20TBSS	M20 x 1000	5

TYPE - TBS

SUB TYPE - TBS01

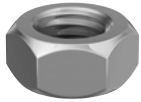
STAINLESS STEEL NUTS & WASHERS

SUPERIOR CORROSION RESISTANCE



SUSTAINABLE STAINLESS STEEL

HEX FULL NUT (DIN934)



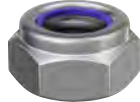
A full hex nut in A2 stainless steel, used for all bolting and fastening applications.

BOX/BAG/PACK A2 / AUST SS

Product Code	Size (mm)	A/F (mm)	Qty	Carton Qty (Pack)	Carton Qty
BOX					
NH4SS	M4	7	1000	20	20,000
NH5SS	M5	8	1000	20	20,000
NH8SS	M8	13	200	20	4,000
NH10SS	M10	17	100	20	2,000
SMALL BAG					
NH4SSX	M4	7	10	1,000	10,000
NH5SSX	M5	8	10	600	6,000
NH6SSX	M6	10	10	350	3,500
NH8SSX	M8	13	10	300	3,000
NH10SSX	M10	17	10	150	1,500
NH12SSX	M12	19	5	200	1,500
NH16SSX	M16	24	5	100	500
PACK					
NH5SSP	M5	8	50	10	500
NH6SSP	M6	10	40	10	400
NH8SSP	M8	13	20	10	200
NH10SSP	M10	17	10	10	100
NH12SSP	M12	19	8	10	80
NH16SSP	M16	24	2	10	20

TYPE - NUS/SSB/PAK SUB TYPE - NUS01/SSB02/PAK67

NYLON NUT - TYPE T (DIN985)



Type T hexagonal nylon nut with a metric thread. Sometimes known as a 'thin nut'.
• Conforms to ISO 10511

BOX/BAG/PACK A2 / AUST SS

Product Code	Size (mm)	A/F (mm)	Qty	Carton Qty (Pack)	Carton Qty
BOX					
NT5SS	M5	8	1000	16	16,000
NT6SS	M6	10	500	16	8,000
NT10SS	M10	17	100	16	1,600
SMALL BAG					
NT5SSX	M5	8	10	600	6,000
NT6SSX	M6	10	10	300	3,000
NT8SSX	M8	13	10	300	3,000
NT10SSX	M10	17	10	150	1,500
NT12SSX	M12	19	5	200	1,000
NT16SSX	M16	24	5	100	500
PACK					
NT5SSP	M5	8	20	10	500
NT6SSP	M6	10	20	10	400
NT8SSP	M8	13	10	10	200
NT10SSP	M10	17	4	10	100
NT12SSP	M12	19	4	10	80

TYPE - NUS/SSB/PAK SUB TYPE - NUS02/SSB08/PAK96

HEX DOME NUT (DIN1587)



A hexagonal dome nut with a metric thread. Ideal for protective or aesthetic uses.

BOX/PACK A2 / AUST SS

Product Code	Size (mm)	A/F (mm)	Qty	Carton Qty (Pack)	Carton Qty
BOX					
ND5SS	M5	8	500	16	8,000
ND6SS	M6	10	200	20	4,000
SMALL BAG					
ND5SSX	M5	8	10	500	5,000
ND6SSX	M6	10	10	300	3,000
ND8SSX	M8	13	10	200	2,000
ND10SSX	M10	17	10	100	1,000
ND12SSX	M12	19	5	100	500

TYPE - NUS/SSB SUB TYPE - NUS03/SSB09

FORM A WASHER (DIN125-A)



A traditional and commonly used washer for clamping and spacing applications.

• Conforms to BS4320

BOX/BAG/PACK A2 / AUST SS

Product Code	Size x Outer Ø (mm)	Thickness (mm)	Qty	Carton Qty (Pack)	Carton Qty
BOX					
WA4SS	M4 x 9	0.8	1,000	60	60,000
WA5SS	M5 x 10	1.0	1,000	40	40,000
WA8SS	M8 x 16	1.6	500	24	15,000
WA10SS	M10 x 20	2.0	500	12	9,000
WA12SS	M12 x 24	2.5	200	16	4,800
WA16SS	M16 x 30	3.0	100	18	2,400
SMALL BAG					
WA4SSX	M4 x 9	0.8	50	800	40,000
WA5SSX	M5 x 10	1.0	50	600	30,000
WA6SSX	M6 x 12	1.6	20	700	14,000
WA8SSX	M8 x 16	1.6	20	500	10,000
WA10SSX	M10 x 20	2.0	10	480	4,800
WA12SSX	M12 x 24	2.5	10	250	2,500
WA16SSX	M16 x 30	3.0	10	180	1,800
PACK					
WA5SSP	M5 x 10	1.0	50	10	500
WA6SSP	M6 x 12	1.6	50	10	500
WA8SSP	M8 x 16	1.6	30	10	300
WA10SSP	M10 x 20	2.0	20	10	200
WA12SSP	M12 x 24	2.5	10	10	100
WA16SSP	M16 x 30	3.0	6	10	600

TYPE - WAS/SSB/PAK SUB TYPE - WAS01/SSB01/PAK68

FORM B WASHER (DIN125-B)



Thinner than a Form A, used for clamping and spacing applications.

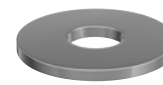
• Conforms to BS4320

BOX/BAG A2 / AUST SS

Product Code	Size x Outer Ø (mm)	Thickness (mm)	Qty	Carton Qty (Pack)	Carton Qty
BOX					
WB6SS	M6 x 12	0.8	1,000	40	40,000
WB10SS	M10 x 20	1.25	500	18	9,000
WB16SS	M16 x 30	2.0	100	24	2,400
SMALL BAG					
WB6SSX	M6 x 12	0.8	20	900	18,000
WB8SSX	M8 x 16	1.0	20	500	10,000
WB10SSX	M10 x 20	1.25	10	600	6,000
WB12SSX	M12 x 24	1.6	10	380	3,800
WB16SSX	M16 x 30	2.0	10	200	2,000

TYPE - WAS/SSB SUB TYPE - WAS03/SSB06

PENNY / REPAIR WASHER (DIN9054)



A large diameter washer ideal for spreading the clamping load, reducing a hole diameter and packing out. Also known as a 'mudguard' washer.

BOX/BAG/PACK A2 / AUST SS

Product Code	Size x Outer Ø (mm)	Thickness (mm)	Qty	Carton Qty (Pack)	Carton Qty
BOX					
WP525SS	M5 x 25	1.5	200	24	4,800
WP625SS	M6 x 25	1.5	200	24	4,800
WP825SS	M8 x 25	1.5	200	24	4,800
WP835SS	M8 x 35	1.5	200	24	4,800
WP1025SS	M10 x 25	1.5	200	24	4,800
WP1035SS	M10 x 35	1.5	200	12	2,400
WP1235SS	M12 x 35	1.5	200	12	2,400
SMALL BAG					
WP525SSX	M5 x 25	1.5	10	380	3,800
WP625SSX	M6 x 25	1.5	10	380	3,800
WP825SSX	M8 x 25	1.5	10	380	3,800
WP835SSX	M8 x 35	1.5	10	250	2,500
WP1025SSX	M10 x 25	1.5	10	400	4,000
WP1035SSX	M10 x 35	1.5	10	250	2,500
WP1235SSX	M12 x 35	1.5	10	250	2,500
PACK					
WP625SSP	M6 x 25	1.5	10	10	1,000
WP825SSP	M8 x 25	1.5	8	10	800
WP1035SSP	M10 x 35	1.5	4	10	400

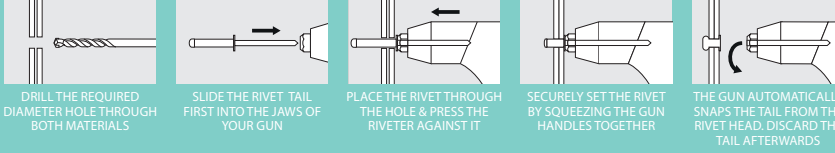
TYPE - WAS/SSB/PAK SUB TYPE - WAS02/SSB07/PAK69

NEW

RIVETS

Quick and easy to use fasteners designed for thin sheet and hard plastic applications. Ideal for applications where welding or bolting is not possible. During installation the head tightly grips to the back of the work piece whilst giving a low profile and aesthetic finish. Available in A2 304 stainless steel and aluminium for corrosion resistance.

Installation Guide:



DOME HEAD RIVETS (DIN7337)



- Ideal for sheet to sheet applications.
- Aluminium body for an enhanced resistance to corrosion.

CORROSION RATING



ALUMINIUM

Urban and industrial areas with a low salt atmosphere



- Ideal for sheet to sheet applications.
- A2 stainless steel body for ultimate resistance to corrosion.

CORROSION RATING



A2/AUST.SS

Urban and industrial areas with a moderate salt atmosphere

FLANGE HEAD RIVETS (DIN7337)



- Ideal for heavy duty sheet to sheet applications.
- Aluminium body for an enhanced resistance to corrosion.

CORROSION RATING



ALUMINIUM

Urban and industrial areas with a low salt atmosphere

BOX

Product Code	Head Ø x Length (mm)	Drill Hole Ø (mm)	Min. Grip Range (mm)	Max. Grip Range (mm)	Qty
ALUMINIUM					
748456	3.2 x 6	3.3	1.5	3.5	500
748741	3.2 x 8	3.3	3.5	5.5	500
748852	3.2 x 10	3.3	5.5	7.5	500
748963	4.0 x 8	4.1	3.0	5.0	500
748369	4.0 x 10	4.1	5.0	6.5	500
748258	4.0 x 12	4.1	6.5	8.5	500
748147	4.8 x 10	4.9	4.5	6.0	500
748951	4.8 x 12	4.9	6.0	8.0	500
748357	4.8 x 14	4.9	8.0	10.0	500

TYPE - RIV SUBTYPE - RIV01

BOX

Product Code	Head Ø x Length (mm)	Drill Hole Ø (mm)	Min. Grip Range (mm)	Max. Grip Range (mm)	Qty
A2/AUST.SS					
748023	3.2 x 6	3.3	1.0	3.0	500
748613	3.2 x 8	3.3	3.0	5.0	500
748100	4.0 x 10	4.1	4.5	6.5	500
748531	4.0 x 12	4.1	6.5	8.5	250
748868	4.8 x 14	4.9	8.0	9.5	250
748305	4.8 x 16	4.9	9.5	11.0	250

TYPE - RIV SUBTYPE - RIV02

BOX

Product Code	Head Ø x Length (mm)	Drill Hole Ø (mm)	Min. Grip Range (mm)	Max. Grip Range (mm)	Qty
ALUMINIUM					
748918	4.8 x 12	4.9	6.0	8.0	250
748735	4.8 x 16	4.9	10.0	12.0	250
748499	4.8 x 20	4.9	15.0	17.0	250
748264	4.8 x 25	4.9	16.0	21.0	250

TYPE - RIV SUBTYPE - RIV03

NEW

RIVETERS

Hard wearing riveters suitable for the professional user. Constructed from all metal components for simple and effortless installation of a variety of rivets including dome head and flange head. Interchangeable nose pieces included for the installation of various sized rivets.

HAND RIVETER



A robust steel hand riveter, with a soft grip handle for user comfort. Ideal for DIY and professional use such as engineering, mechanics, roofing construction and more. Powder coated for a long lasting and durable finish.

- Soft grip handle for user comfort
- 4 interchangeable nose pieces
- Nose piece spanner included

BOX

Product Code	To Suit Rivets (mm)	Qty
784555	3.0, 3.2, 4.0 & 4.8	1

TYPE - RVG SUBTYPE - RVG01

LAZY TONGUE RIVETER

A heavy duty riveter designed for repetitive work. During installation the lattice mechanism increases driving force, reducing work time and effort. Ideal for professional use such as engineering, mechanics, roofing construction and more. Powder coated for a long lasting and durable finish.



- Lattice mechanism increases driving force
- 5 interchangeable nose pieces
- Nose piece spanner included

BOX

Product Code	To Suit Rivets (mm)	Qty
784101	3.0, 3.2, 4.0, 4.8, 6.0 & 6.4	1

TYPE - RVG SUBTYPE - RVG02

SCREWS
FASTENERS & FIXINGS
ANCHORS
NAILS
TAPES & ADHESIVES
BUILDING CHEMICALS
POWERTOOL ACC.
HAND TOOLS & ACC.
SITE PROTECTION
BUILDERS METAL WORK
SECURITY & IRONMONGERY
GATE & FENCE HARDWARE

CABLE TIES

Designed to bundle and secure wires, cables, hoses and much more.



COLOURED CABLE TIES



BAG

Product Code	Size (mm)	Tensile Strength (kg)	Bag Qty	Carton Qty (Bag)
48200CTMIX	4.8 x 200	22.20	200	75

TYPE - ECT SUB TYPE - ECT03

CABLE TIES



BAG

Product Code	Size (mm)	Tensile Strength (kg)	Bag Qty	Carton Qty (Bag)
BLACK				
25100CTB	2.5 x 100	8.10	100	600
36140CTB	3.6 x 140	18.20	100	300
36200CTB	3.6 x 200	18.20	100	200
45180CTB	4.5 x 180	22.00	100	160
45200CTB	4.5 x 200	22.00	100	150
45300CTB	4.5 x 300	22.00	100	110
48160CTB	4.8 x 160	22.20	100	160
48200CTB	4.8 x 200	22.20	100	150
48250CTB	4.8 x 250	22.20	100	120
48300CTB	4.8 x 300	22.20	100	110
48370CTB	4.8 x 370	22.20	100	90
48430CTB	4.8 x 430	22.20	100	75
76250CTB	7.6 x 250	54.40	100	60
76300CTB	7.6 x 300	54.40	100	50
76370CTB	7.6 x 370	54.40	100	40
76540CTB	7.6 x 540	54.40	100	20
90530CTB	9.0 x 530	79.40	100	20

TYPE - ECT SUB TYPE - ECT02

Product Code	Size (mm)	Tensile Strength (kg)	Bag Qty	Carton Qty (Bag)
NATURAL				
25100CTN	2.5 x 100	8.10	100	600
36140CTN	3.6 x 140	18.20	100	300
36200CTN	3.6 x 200	18.20	100	200
45200CTN	4.5 x 200	22.00	100	150
48160CTN	4.8 x 160	22.20	100	160
48200CTN	4.8 x 200	22.20	100	150
48250CTN	4.8 x 250	22.20	100	120
48370CTN	4.8 x 370	22.20	100	90
48430CTN	4.8 x 430	22.20	100	75
76250CTN	7.6 x 250	54.40	100	60
76300CTN	7.6 x 300	54.40	100	50
76370CTN	7.6 x 370	54.40	100	40
76540CTN	7.6 x 540	54.40	100	20
90530CTN	9.0 x 530	79.40	100	20

TYPE - ECT SUB TYPE - ECT01

NEW

STAINLESS STEEL CABLE TIES



- High tensile strength
- High temperature resistance (-80°C to +500°C)
- Conforms to BS 7671:2018

BAG

Product Code	Size (mm)	Tensile Strength (kg)	Bag Qty	Carton Qty (Bag)
A2 STAINLESS STEEL				
46152CTSS	4.6 x 152	60.00	100	100
46200CTSS	4.6 x 200	60.00	100	50
46300CTSS	4.6 x 300	60.00	100	50
46350CTSS	4.6 x 350	60.00	100	50
46500CTSS	4.6 x 500	60.00	100	40
79350CTSS	7.9 x 350	80.00	100	25

TYPE - ECT SUB TYPE - ECT05

MIXED PACK CABLE TIES



TUBE - 200 QTY

Product Code	Size (mm)	Colour	Cable Tie Qty	Tube Qty	Tubes Per Carton
CTMIX200	2.5 x 100	Natural	50	200	80
	2.5 x 100	Black	50		
	3.6 x 200	Natural	50		
	3.6 x 200	Black	50		

TYPE - ECT SUB TYPE - ECT05

TUBE - 500 QTY

Product Code	Size (mm)	Colour	Cable Tie Qty	Tube Qty	Tubes Per Carton
CTMIX500	2.5 x 100	Black	200	500	24
	3.6 x 140	Black	200		
	4.8 x 200	Black	100		

TYPE - ECT SUB TYPE - ECT05

CABLE TIE PLUG



A simple solution for attaching a cable tie to masonry or timber. Black only.

Substrate	Masonry	Timber
Hole Size (mm)	8.0	7.0
Min. Hole Depth (mm)	40	40

BAG

Product Code	Size (mm)	Bag Qty	Carton Qty (Bag)
840CTP	8.0 x 40	100	85

TYPE - ECT SUB TYPE - ECT04

HOOK & LOOP STRAPS



Convenient and temporary fastening.

PACK

Product Code	Pack Qty	Outer Bag Qty (Pack)
HOOKLOOPP	10	10

TYPE - PAK SUB TYPE - PK005

R SPRING CLIPS & COTTER PINS



R Spring Clip

Commonly used to secure the ends of round shafts

Cotter Pins

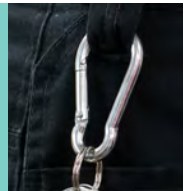
A metal split pin used to secure two components

PACK

Product Code	Description	Size (mm)	Pack Qty	Outer Bag Qty (Pack)
MIXRSPRINGP	R Spring Clip	Mixed	18	10
MIXCOTTERP	Cotter Pin	Mixed	16	10

TYPE - PAK SUB TYPE - PK006/PK007

SNAP HOOKS



For quick & easy, low security, temporary fastening. Available in aluminium and steel.

PACK

Product Code	Length (mm)	Type	Colour	Pack Qty	Outer Bag Qty (Pack)
SSHOOKP	60	Steel	Silver	3	10
ASHOOKP	47	Aluminium	Red	5	10

TYPE - PAK SUB TYPE - PAK82

HANGING FIXINGS



ADHESIVE HOOK



Handy self adhesive hooks.

PACK

Product Code	Size	Pack Qty	Outer Bag Qty (Pack)
SMALLAHOOKP	Small	5	10
LARGEAHOOKP	Large	3	10

TYPE - PAK SUB TYPE - PAK88

CURTAIN HOOK



Commonly used plastic curtain hooks.

PACK

Product Code	Colour	Pack Qty	Outer Bag Qty (Pack)
CHOOKP	White	35	10

TYPE - PAK SUB TYPE - PAK91

PICTURE HANGING



For hanging pictures.

PACK

ELECTRO BRASS ZINC

Product Code	Item	Size	Pack Qty	Outer Bag Qty (Pack)
35BWP	Wire	3.5m	1	10
2PHSP	Single Hook	No.2	12	10
3PHDP	Double Hook	No.3	4	10
MPHP	Mixed Hooks	No.2 & 3	8	10

TYPE - PAK SUB TYPE - PAK38 (BWP) / PAK39 (PH) / PAK40 (MPHP)

MIRROR PLATE

Slotted



Plain



For mounting mirrors onto walls.

PACK

ELECTRO BRASS

Product Code	Type	Size (mm)	Pack Qty	Outer Bag Qty (Pack)
PMP32P	Plain	32	4	5
PMP38P	Plain	38	4	5
SMP32P	Slotted	32	4	5
SMP38P	Slotted	38	4	5

TYPE - PAK SUB TYPE - PKO12

SAWTOOTH HANGER



Hanging of canvas and picture frames

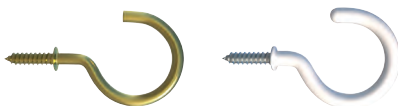
PACK

ELECTRO BRASS

Product Code	Width (mm)	Pack Qty	Outer Bag Qty (Pack)
STOOTH41P	41	20	10
STOOTH63P	63	15	10
MIXSTOOTH	41 & 63	15	10

TYPE - PAK SUB TYPE - PAK85

ROUND CUP HOOK



A light duty horizontal or vertical hook to be used into wood for hanging small items such as keys.

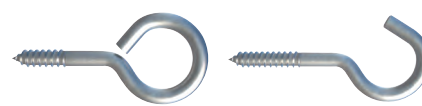
PACK

ELECTRO BRASS ZINC

Product Code	Hook Dia. (mm)	Thread Dia. (mm)	Thread Dia. (Gauge)	Length (mm)	Pack Qty	Outer Bag Qty (Pack)
BRASS						
19SHBP	10.0	3.0	4	19	15	10
25SHBP	13.0	3.0	4	25	10	10
38SHBP	21.0	4.0	8	38	5	10
ZINC / WHITE						
25SHWP	13.0	3.0	4	25	6	10
38SHWP	21.0	4.0	8	38	4	10

TYPE - PAK SUB TYPE - PAK32 (BRASS) / PAK33 (WHITE)

SCREW EYE & SCREW HOOK



A medium duty versatile solution for either hanging or attaching items to timber or masonry with the use of a plug.

PACK

ZINC

Product Code	Hook Dia. (mm)	Thread Dia. (mm)	Thread Dia. (Gauge)	Length (mm)	Pack Qty	Outer Bag Qty (Pack)
SCREW HOOK						
60SHP	16.0	5.5	12	60	4	10
80SHP	20.0	5.5	12	80	3	10
100SHP	20.0	5.5	12	100	2	10
SCREW EYE						
30SEP	9.0	3.9	7	30	15	10
40SEP	12.0	4.2	8	40	10	10
45SEP	12.0	4.9	10	45	5	10
55SEP	16.0	5.5	12	55	4	10

TYPE - PAK SUB TYPE - PAK37 / PAK34

SQUARE CUP HOOK



A light duty horizontal hook to be used into wood for hanging small items.

PACK

ELECTRO BRASS

Product Code	Bend (mm)	Thread Dia. (mm)	Thread Dia. (Gauge)	Length (mm)	Pack Qty	Outer Bag Qty (Pack)
25SQBP	10.0	3.0	4	25	16	10
38SQBP	13.0	4.0	8	38	8	10

TYPE - PAK SUB TYPE - PAK35

VINE EYE



Multiple uses, but commonly used to thread string/wire, and to train plants up fences and walls with the use of a plastic plug.

PACK

ZINC

Product Code	Hook Dia. (mm)	Thread Dia. (mm)	Thread Dia. (Gauge)	Length (mm)	Pack Qty	Outer Bag Qty (Pack)
75VEP	16.0	5.5	12	75	4	10
100VEP	16.0	5.5	12	100	2	10

TYPE - PAK SUB TYPE - PAK36

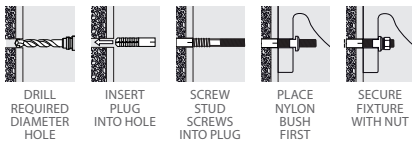
SCREWS
FASTENERS & FIXINGS
ANCHORS
NAILS
TAPES & ADHESIVES
BUILDING CHEMICALS
POWERTOOL ACC.
HAND TOOLS & ACC.
SITE PROTECTION
BUILDERS METAL WORK
SECURITY & IRONMONGERY
GATE & FENCE HARDWARE

SANITARY FIXINGS



LIGHT DUTY BASIN FIXING KITS

Designed to securely mount washbasins to a variety of solid building materials. Countersunk nylon bushes designed to ensure no damage is done to the basin during installation. Can also be used into wood without nylon plugs.

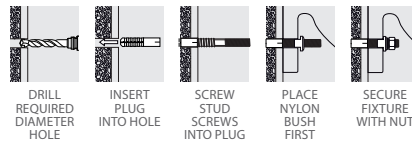


PACK

Product Code	Item	Size (mm)	Qty	Outer Bag Qty (Pack)
LDBK	Nylon Plugs	10.0 x 50	2	20
	Stud Screws	M8 x 100	2	
	Nylon Brushes	M8	2	
	Washers	M8	2	
	Hex Full Nuts	M8	2	

HEAVY DUTY BASIN FIXING KITS

Designed to securely mount washbasins to a variety of solid building materials. Countersunk nylon bushes designed to ensure no damage is done to the basin during installation. Can also be used into wood without nylon plugs.

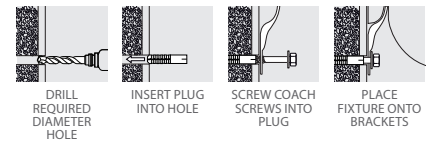


PACK

Product Code	Item	Size (mm)	Qty	Outer Bag Qty (Pack)
HDBK	Nylon Plugs	14.0 x 75	2	10
	Stud Screws	M10 x 140	2	
	Nylon Brushes	M10	2	
	Washers	M10	2	
	Hex Full Nuts	M10	2	

CLOAKROOM BASIN FIXING KIT

Designed to fix cloakroom basins to a variety of solid building materials. Can also be used into wood without nylon plugs.



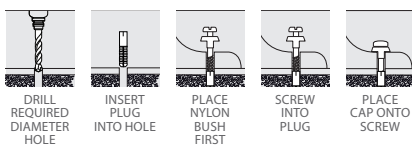
PACK

Product Code	Item	Size (mm)	Qty	Outer Bag Qty (Pack)
CBK	Basin Brackets	-	2	20
	Nylon Plugs	10.0 x 50	2	
	Coach Screws	7.0 x 60	2	
	Washers	M7	2	

TYPE - SEK SUB TYPE - SEK01

PAN/BIDET FIXING KIT

Designed for floor fixing pan/bidets into a variety of solid building materials. Countersunk nylon bushes designed to ensure no damage is done to the fixture during installation. Flat caps for a concealed finish. Can also be used into wood without nylon plugs.



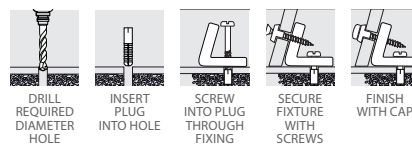
PACK

Product Code	Item	Size (mm)	Qty	Outer Bag Qty (Pack)
PBK	Nylon Plugs	10.0 x 50	2	20
	Coach Screws	6.0 x 80	2	
	Nylon Brushes	6	2	
	Washers	M6	2	
	Cover Caps	18	2	

TYPE - SEK SUB TYPE - SEK01

ADJUSTABLE WC/BIDET FIXING KIT

Designed to fix WC pan/bidets to a variety of solid building materials. Fully adjustable for a quick easy installation. Countersunk nylon bushes designed to ensure no damage is done to the fixture during installation. Can also be used into wood without nylon plugs.



PACK

Product Code	Item	Size (mm)	Qty	Outer Bag Qty (Pack)
WCBK	Nylon Brackets	-	2	20
	Nylon Plugs	10.0 x 50	2	
	Coach Screws	6.0 x 70	2	
	Nylon Brushes	5	2	
	Washers	M6	2	
	Screws	4.5 x 40	2	
	Cover Caps	18	2	

TYPE - SEK SUB TYPE - SEK01

PLUG & CHAIN



Replacement plugs and chains for baths and sinks. (Sold separately)

PACK

Product Code	Item	Size (inch)	Qty	Outer Bag Qty (Pack)
BATHPLUG112P	Plug	1 1/2	2	10
BATHPLUG134P	Plug	1 3/4	2	10
CSCHAIN12P	Chain	12	2	10
CSCHAIN18P	Chain	18	2	10

TYPE - PAK SUB TYPE - PAK89/90

PIPE CLIPS

Manufactured by Talon



SINGLE QUICK LOCK PIPE CLIP

Designed to withstand repeated opening and closing offering 360° degree pipe retention. Secure grip and complete security when pipe is in place, with the snap tight locking top. The high stand-off allows for lagging and heat circulation.



BAG

Product Code	To Suit Pipe Size (mm)	To Fit Screw Dia (mm)	To Fit Screw Gauge (Imp.)	Bag Qty
QS15	15.0	3.5 - 4.5	6 - 8	50
QS22	22.0	3.5 - 4.5	6 - 8	50
QS28	28.0	3.5 - 4.5	6 - 8	50

TYPE - PPC SUB TYPE - PPC01

QUICK LOCK SPACER

The Quick Lock spacer is designed to suit the single quick lock pipe clip.



It allows a greater stand-off where site conditions apply or where thicker lagging is used.

BAG

Product Code	Height (mm)	To Fit Screw Dia (mm)	To Fit Screw Gauge (Imp.)	Bag Qty
QSP1	15	3.5 - 4.5	6 - 8	50

TYPE - PPC SUB TYPE - PPC02

SINGLE OPEN PIPE CLIP

The single open clip provides a strong and reliable snap fit pipe fixing.



BAG

Product Code	To Suit Pipe Size (mm)	To Fit Screw Dia (mm)	To Fit Screw Gauge (Imp.)	Bag Qty
OPS15	15.0	3.5 - 4.5	6 - 8	20
OPS22	22.0	3.5 - 4.5	6 - 8	20
OPS28	28.0	3.5 - 4.5	6 - 8	20

TYPE - PPC SUB TYPE - PPC03

DOUBLE QUICK LOCK PIPE CLIP

Double robust clips designed to withstand repeated opening and closing where needed. 360° pipe retention.



BAG

Product Code	To Suit Pipe Size (mm)	To Fit Screw Dia (mm)	To Fit Screw Gauge (Imp.)	Bag Qty
QD15	15.0	3.5 - 4.5	6 - 8	50
QD22	22.0	3.5 - 4.5	6 - 8	50

TYPE - PPC SUB TYPE - PPC04

MDPE PIPE CLIP

The single hinged clip is available in sizes to fit MDPE pipe and in blue to match the pipe colour.



BAG

Product Code	To Suit Pipe Size (mm)	To Fit Screw Dia (mm)	To Fit Screw Gauge (Imp.)	Bag Qty
TMS20	19.0 - 21.0	3.5 - 4.5	6 - 8	10
TMS25	25.0 - 27.4	3.5 - 4.5	6 - 8	10
TMS35	31.8 - 35.0	3.5 - 5.0	6 - 10	10

TYPE - PPC SUB TYPE - PPC05

NAIL IN PIPE CLIP

Zinc plated hardened and tempered nail suitable for all types of masonry.



BAG

Product Code	To Suit Pipe Size (mm)	Nail Size (mm)	Bag Qty
NCW10	10.0	2.5 x 30	40
NCW15	15.0	2.5 x 45	20
NCW22	22.0	2.5 x 30	20

TYPE - PPC SUB TYPE - PPC04

NEW PACKS

HOSE CLIPS

Manufactured to BS 5315-1991



Zinc plated carbon steel worm drive hose clips with a 7mm slotted hex.



PACK/BAG

Product Code	Hose Size (mm)	Pack Qty	Outer Qty (Packs)
PACK			
HC9512P	9.5 - 12	4	10
HC1116P	11 - 16	4	10
HC1320P	13 - 20	4	10
HC1825P	18 - 25	4	10
HC2230P	22 - 30	4	10
HC2535P	25 - 35	4	10
BAG			
HC9512	9.5 - 12	10	100
HC1116	11 - 16	10	100
HC1320	13 - 20	10	100
HC1622	16 - 22	10	100
HC1825	18 - 25	10	100
HC2230	22 - 30	10	50
HC2535	25 - 35	10	50
HC3040	30 - 40	10	50
HC3550	35 - 50	10	50
HC4055	40 - 55	10	20
HC4560	45 - 60	10	20
HC5570	55 - 70	10	20
HC6080	60 - 80	10	20
HC7090	70 - 90	10	20
HC90120	90 - 120	10	10
HC110140	110 - 140	10	10

TYPE - PAK/PPC SUB TYPE - PAK021/PPC07

MIXED HOSE CLIPS



Mixed bag containing the 8 most popular sizes. Zinc plated carbon steel worm drive hose clips with a 7mm slotted hex.

BAG

Product Code	Hose Size (mm)	Qty	Bag Qty	Carton Qty (Bags)
HCMIX	11 - 16	10	50	6
	13 - 20	10		
	18 - 25	10		
	22 - 30	10		
	25 - 35	4		
	35 - 50	2		
	60 - 80	2		
	110 - 140	2		

TYPE - PPC SUB TYPE - PPC07