

# Building Chemicals

Formulated for the Professionals



**Multi-Purpose Lubricant**  
- Page 124 -



**Silicone Lubricant**  
- Page 124 -



**Copper Anti-Seize**  
- Page 124 -



**White Lithium Grease**  
- Page 125 -



**Chain Lubricant**  
- Page 125 -



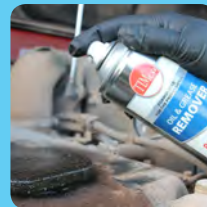
**Cutting & Tapping Lubricant**  
- Page 125 -



**Welder's Anti-Spatter**  
- Page 125 -



**Air & Gas Leak Detector**  
- Page 126 -



**Oil & Grease Remover**  
- Page 126 -



**Survey & Spot Marker**  
- Page 126 -



**Very High Temperature Paint**  
- Page 127 -



**Finishing Paint**  
- Page 127 -



**Cold Galvanising Paint**  
- Page 127 -



**Primer**  
- Page 127 -

New

**Metolux®**



**1 Part Wood Filler**

- Page 128 -



**2 Part Styrene Free Wood Filler**

- Page 129 -



**2 Part Decor All Purpose Filler**

- Page 129 -



**2 Part Metoset Liquid Mortar**

- Page 129 -



**Metobond 1-1 Epoxy Building Adhesive**

- Page 129 -

# Maintenance Sprays & Lubricants



## Multi-Purpose Lubricant



Developed to penetrate, loosen, maintain, protect and clean metal surfaces.

Ideal for: Drying electrical systems, stopping hinges and latches from squeaking, maintaining locking mechanisms, reducing tool wear and tear, priming ignition systems, loosening seized nuts and bolts and much more.

**Features:**

- Premium quality oil suspended in a low viscosity dispersing fluid
- Specially formulated to rapidly penetrate into hard to reach areas
- Excellent moisture repelling properties
- Maintains lasting performance of a variety of metal components
- Heat resistant from -50°C to +200°C

PROTECTS	LUBRICATES	DEGREASES	360° SPRAY VALVE	WATER RESISTANT	RESISTS CORROSION	TEMPERATURE RESISTANT
----------	------------	-----------	------------------	-----------------	-------------------	-----------------------

Product Code	Size	Carton Qty
237789	480ml	12
TYPE - AER		SUB TYPE - AER01



## Silicone Lubricant



Formulated for applications where there are plastic or rubberised components, due to the absence of any chemicals which cause hardening and splitting.

Ideal for: window seals and slides, runners, bearings, o-rings, textile equipment and more.

**Features:**

- Low odour
- Long lasting
- No heavy hydrocarbons that can cause cracking, squeaking, splitting and hardening
- Heat resistant from -50°C to +200°C

PROTECTS	LUBRICATES	REDUCES FRICTION	LOW ODOUR NON STAINING	TEMPERATURE RESISTANT
----------	------------	------------------	------------------------	-----------------------

Product Code	Size	Carton Qty
237357	380ml	12
TYPE - AER		SUB TYPE - AER01



## Copper Anti-Seize



A premium pure copper lubricant with a graphite additive, suspended in a high quality grease.

It maintains and protects Steel, Stainless Steel, Cast Iron, Copper & Brass components from high temperatures, corrosion and seizure.

Ideal for all automotive, industrial and construction uses including: threaded fasteners, brake pads and callipers, manifolds and exhausts, boiler parts, flanges and pipes.

**Features:**

- The graphite additive allows for easy assembly and dismantling of a wide range of metal applications
- Copper formulation resists high temperatures
- Heat resistant up to 1100°C

PROTECTS	LUBRICATES	HEAVY DUTY	WATER RESISTANT	ANTI-FUSION	EXTREME TEMPERATURE
----------	------------	------------	-----------------	-------------	---------------------

Product Code	Size	Carton Qty
237456	380ml	12
TYPE - AER		SUB TYPE - AER01



Screws

Fasteners & Fixings

Anchors

Nails

Tapes & Adhesives

Building Chemicals

Power Tool Accessories

Hand Tools & Accessories

Site Protection

Builders Metal Work

Security & Ironmongery

Gate & Fence Hardware

## White Lithium Grease



An opaque viscous lubricant with a non-thinning heat resistant formulation to ensure long term performance. Ideal for industrial, marine and automotive applications where water ingress can be detrimental to lubrication.

**Features:**

- Highly visible
- Extremely effective in areas requiring water resistance
- Heat resistant from -20°C to +140°C



LUBRICATES



REDUCES FRICTION



HIGH WATER RESISTANCE



RESISTS CORROSION



TEMPERATURE RESISTANT

Product Code	Size	Carton Qty
237482	380ml	12
TYPE - AER		SUB TYPE - AER01



## Chain Lubricant



Designed to penetrate, maintain, protect and clean chain, wire rope and moving metal parts. The high viscosity formula gives excellent lubricant retention, preventing "fling off" and unnecessary wear and maintenance.

Ideal for: chain, gears, wire rope, pulleys, rollers, bearings and more.

**Features:**

- The Molybdenum disulphide additive gives exceptional long lasting friction reduction
- Prolongs the performance and lifespan of moving metal parts and surfaces
- Prevents corrosion and reduces dirt and grime build up, even in wet and humid environments



ANTI-FLING



LUBRICATES



MO<sub>2</sub> ADDITIVE



WATER RESISTANT



DIRT & GRIME RESISTANT

Product Code	Size	Carton Qty
237123	380ml	12
TYPE - AER		SUB TYPE - AER01



## Cutting & Tapping Lubricant



Formulated to significantly reduce friction and wear, increase cutting speeds, protect and extend tool life, and ensure a consistent high quality surface finish.

Ideal for: all machine shops, tool-rooms and maintenance departments.

**Features:**

- Contains extreme pressure additives
- Prevents pitting, galling and metal seizure
- Improves tooling accuracy
- Suitable for use on hard to work metals including stainless steel, titanium, aluminium and tool steel
- Complete with an easy-to-use 360° spray nozzle, for precise application in hard to reach and confined spaces.



360° SPRAY VALVE



LUBRICATES



REDUCES FRICTION



ANTI-GALLING



PROLONGS TOOL LIFE

Product Code	Size	Carton Qty
237159	380ml	12
TYPE - AER		SUB TYPE - AER01



## Welder's Anti-Spatter



Specifically formulated to eliminate the need to remove unsightly spatter from welds, working areas and equipment, significantly reducing working time.

**Features:**

- Can be easily removed after welding
- Low odour and colourless
- Silicone and petroleum free, so does not interfere with post welding coatings



ODOURLESS



NO COLOUR



NON-FLAMMABLE



QUICK DRYING



RESISTS CORROSION

Product Code	Size	Carton Qty
237560	300ml	12
TYPE - AER		SUB TYPE - AER01





## Air & Gas Leak Detector



Professional formulation, designed to quickly and reliably detect the smallest leak in pressurised systems. Ideal for: refrigeration units, air conditioning systems, exhausts, pipes, valves, screw connectors, welding seams, compressed air lines and compressors.

### Features:

- Water based
- Complete with an easy-to-use 360° spray nozzle, for precise application in hard to reach and confined spaces
- Reacts instantly upon contact with gas and air pressure, forming a stream of bubbles to identify the leak



SAFE REACTION



360° SPRAY VALVE



NON-FLAMMABLE



INSTANT REACTION



EASY APPLICATION

Product Code	Size	Carton Qty
237023	300ml	12
TYPE - AER		SUB TYPE - AER01



## Oil & Grease Remover



A solvent based degreaser, which penetrates, lifts and easily removes heavy oils, grease and tar deposits from most metals and hard plastic surfaces. Ideal for: automotive, industrial, general workshop maintenance, and surface preparation prior to applying paints, sealants and adhesives.

### Features:

- Powerful degreasing performance
- Immediately emulsifies with water
- Highly effective at penetrating and lifting unwanted contaminants
- Leaves the surface clean and residue free



ENGINE DEGREASER



REMOVES TAR SPOTS



QUICK DRYING



REMOVES DIRT & GRIME



DEGREASES

Product Code	Size	Carton Qty
237156	380ml	12
TYPE - AER		SUB TYPE - AER01



# Paints



## Survey & Spot Marker



A rapid drying marking paint for applying semi-permanent markings to soil, grass, concrete and most hard surfaces.

Ideal for a variety of uses including: highway maintenance, site excavation, turf marking, landscaping and marking cable positions prior to drilling and cutting.

Lasts at least 3 months on most hard surfaces. Applications to wet and damp surfaces may decrease performance.

### Features:

- Contains built-in bright colour pigments for a bold finish
- Includes a heavy duty, non clogging nozzle for inverted use
- Includes dual trigger pads for compatibility with survey marking applicators

### Suitable for:

- Soil
- Concrete
- Grass
- Gravel
- Asphalt
- Wood
- Composite
- Brick
- Metal



Product Code	Size	Colour	Application*	Carton Qty
237369	750ml	White	General Marker	12
237025	750ml	Yellow	General Marker	12
237798	750ml	Blue	Water	12
237206	750ml	Red	Electricity	12
237047	750ml	Green	Cablework	12
237225	750ml	Black	Covering old lines	12
237900	750ml	Orange	Hazards	12
TYPE - AER				SUB TYPE - AER02

\* Survey marking applications include but are not limited to the following



FAST DRYING



3 MONTHS LONG LASTING



HIGH VISIBILITY



INTERNAL & EXTERNAL



HARD WEARING



EASY APPLICATION



ANTI-CLOG NOZZLE

## Very High Temperature Paint



A durable, corrosion resistant coating formulated to withstand temperatures of up to 650°C. Ideal for: stoves, heaters, fire places and surrounds, boiler flues, machinery, exhausts, radiators, incinerators, furnaces and more.

### Features:

- During the curing process a heat resistant silicone matrix is formed
- A hard-wearing heat and flame resistant protective coating for metal surfaces subjected to extreme heat
- The single coat, primerless and fast drying formula gives a non-drip and run free application.
- Heat resistant to +650°C



Product Code	Size	Colour	Carton Qty
237896	380ml	Black	12
TYPE - AER		SUB TYPE - AER02	

## Finishing Paint



A multi-purpose acrylic based finishing paint designed to give a professional and corrosion resistant finish to most substrates including: ferrous metals, stainless steel, aluminium, plaster, wood and some plastics.

Ideal for: ironmongery, garden furniture, decorative fixtures, concealing unsightly surfaces and repairing damaged paint surfaces.

### Features:

- The fast drying, UV resistant and flexible formula gives a drip-free application
- Heat resistant from -50°C to +80°C
- Enhanced colour pigments for a long lasting finish



Product Code	Size	Colour	Carton Qty
237128	380ml	Matt Black	12
237190	380ml	Gloss Black	12
TYPE - AER		SUB TYPE - AER02	

## Cold Galvanising Paint



A premium quality zinc spray that gives excellent corrosion resistance, as either a primer or topcoat of metals after grinding, welding, cutting and drilling. Ideal for: threaded fasteners, exposed metal edges and welds, conduit, fencing and railings, gates, signs, doors, guard rails and more.

### Features:

- Sacrificial zinc coating forms a hard-wearing bond to ferrous metals
- The high zinc purity blends with previously galvanised coatings
- Gives a professional finish or a suitable base layer for acrylic, alkyd, p/u alkyd and epoxy paints
- Actively fights rust and corrosion



Product Code	Size	Colour	Carton Qty
237159	380ml	Galvanised Zinc	12
TYPE - AER		SUB TYPE - AER02	

## Primer



Formulated to maximise the adhesion of finishing paints to metals and hard plastics.

Ideal for: welded seams, machinery and equipment, ironmongery, fences, gates and commercial steelwork.

### Features:

- The corrosion resistant properties enhance the finish paint performance
- Protects exposed metal surfaces after welding and fabrication
- Excellent high build formula fills and masks surface imperfections, resulting in a smooth and consistent finish
- Heat resistant from -50°C to +80°C



Product Code	Size	Colour	Carton Qty
237320	380ml	Red Oxide	12
237480	380ml	Grey	12
TYPE - AER		SUB TYPE - AER02	



New Range!

**Metolux®**

**UK MANUFACTURED  
PROFESSIONAL TRADE  
FILLERS & ADHESIVES**

The Metolux range draws from over 60 years' experience in the construction industry. Consisting of a wide range of building chemical products including timber repair fillers and high strength epoxy adhesives. All have been specifically formulated for professional results in a variety of specialist applications.



**1 Part Wood Filler**

Metolux 1 Part Wood Filler is a pre-coloured high strength polyester wood filler. Used for the filling and repair of small pinholes and cracks up to 5mm deep in timber. Particularly suited to flat face-up applications and for materials such as MDF and chipboard.

**Features:**

- Fast drying
- Easy application
- Easy to sand
- Handy 250ml pack size
- Ideal for interior use - very low odour



Product Code	Size	Colour	Carton Qty
65388	250ml	White	6
65389	250ml	Pine	6
65390	250ml	Light Oak	6
65394	250ml	Dark Oak	6

TYPE - MFL

SUBTYPE - MFL01

Screws

Fasteners & Fixings

Anchors

Nails

Tapes & Adhesives

Building Chemicals

PowerTool Accessories

Hand Tools & Accessories

Site Protection

Builders Metal Work

Security & Ironmongery

Gate & Fence Hardware

## 2 Part Styrene Free Wood Filler

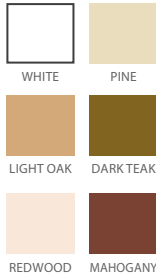


Metolux 2 Part Styrene Free Wood Filler is a two component high strength polyester wood filler. It provides a strong high quality repair to wood imperfections.

Supplied in pre-coloured blends to match your wood type. The weatherproof formulation is ideal for internal and external applications with additives to help flex with the natural movement of timber

**Features:**

- Professional Grade
- Easy to mix
- Easy to sand
- Can be painted, stained, varnished and waxed
- Non slump



Product Code	Size	Colour	Carton Qty
65431	275ml	White	6
65432	770ml	White	6
65433	3.3L	White	2
65437	275ml	Pine	6
65438	770ml	Pine	6
65439	3.3L	Pine	2
65440	275ml	Light Oak	6
65441	770ml	Light Oak	6
65442	3.3L	Light Oak	2
65434	275ml	Dark Teak	6
65435	770ml	Dark Teak	6
65443	275ml	Light Redwood	6
65444	770ml	Light Redwood	6
65447	275ml	Dark Mahogany	6
65446	770ml	Dark Mahogany	6

TYPE - MFL

SUB TYPE - MFL02

## 2 Part Decor All Purpose Filler



Metolux 2 Part Universal Decor Filler is a fast hardening two component polyester filling paste for the repairing of holes and surface imperfections in a wide range of materials including wood, metal, concrete, plaster and fibreglass.

**Features:**

- Easy to sand after 20 minutes
- Easy to blend



Product Code	Size	Colour	Carton Qty
65425	500g	Light Grey	6
65427	1.5kg	Light Grey	6
65428	6.0kg	Light Grey	2

TYPE - MFL

SUB TYPE - MFL03

## 2 Part Metoset Liquid Mortar



Metolux 2 Part Liquid is a two component polyester liquid mortar for crack and chip repair. Alternatively it can be used to fix threaded rod or rebar into concrete, stone or plain brick. Ideal for filling cracks and cavities in difficult to reach areas.

**Features:**

- Easy to apply
- Rapid setting
- Internal & external use
- Paintable
- Useful to fill cavities, cracks or difficult access areas
- High mechanical and physical resistance



Product Code	Size	Colour	Carton Qty
65627	1.0kg	Grey	6
65628	5.0kg	Grey	2

TYPE - MFL

SUB TYPE - MFL04

## Metobond 1-1 Epoxy Building Adhesive



General Purpose Epoxy Building Adhesive, Metolux Metobond has a thixotropic mixed consistency. It is designed predominantly for vertical and overhead applications and is offered as an extremely powerful structural adhesive with high chemical resistance.

Suitable for use with Concrete materials, Brick & Mortar or Stone, Ceramic, Tile or Glass elements, Iron, Aluminium, Copper, Marble, Wooden structures, adhesive or repair applications, bedding in (eg floor tiles), gap & crack filling in voids, grouting. Ideal for horizontal (overhead) or vertical use.

**Features:**

- Ready to use
- Easy to apply (thixotropic)
- Suitable for use in damp conditions
- Non shrink epoxy
- High level of chemical resistance
- Easy to pigment
- Excellent structural characteristics
- Adheres to almost any surface
- Superior sealant qualities
- Cures down to 5°C
- Re-usable unit



Product Code	Size	Colour	Carton Qty
65379	10.0kg	Light Grey	1

TYPE - MFL

SUB TYPE - MFL05

Screws

Fasteners & Fixings

Anchors

Nails

Tapes & Adhesives

Building Chemicals

Power Tool Accessories

Hand Tools & Accessories

Site Protection

Builders Metal Work

Security & Ironmongery

Gate & Fence Hardware



# Multi-Fix Resin

Multi-Fix resin range offers an effective anchoring system for fixing into concrete and masonry. The stress-free nature of this solution gives greater flexibility when anchoring closer to a substrate edge such as balustrade installation.

See Page  
**94.**

## 'Mixing Nozzles with Low Extrusion Force'

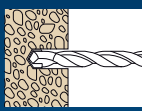


## 'Unique Design for Improved Mixing'

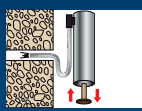


- ✓ Ready to Use
- ✓ Uses Standard Tools
- ✓ T-FLOW™ Nozzle Included
- ✓ Low Extrusion Force
- ✓ Less Wastage
- ✓ No Leakage
- ✓ Faster and Easier to Use
- ✓ Close Edge and Axial Spacing

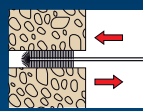
## EASY INSTRUCTION GUIDE



DRILL CORRECT SIZE HOLE FOR YOUR FIXING.



BLOW OUT ANY DEBRIS FROM THE HOLE.

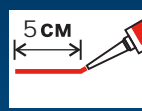


BRUSH THE HOLE TO ENSURE SIDES ARE CLEAN.

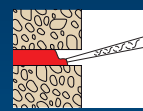


BLOW OUT ANY DEBRIS.

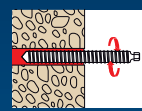
Steps 2-4 Repeat x4



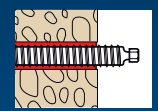
EXTRUDE UNMIXED RESIN TO WASTE



PUMP THE RESIN TO FILL 2/3 OF THE HOLE.



INSERT FIXING BY SLOWLY ROTATING



LEAVE TO CURE FOR THE STATED TIME