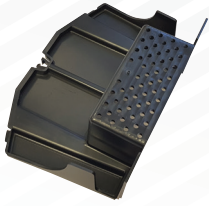


## Fixing Instructions Products



Starter Unit



Half round ridge end cap

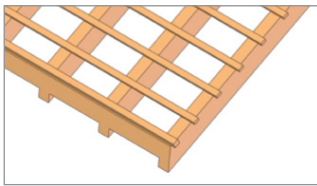


Segmental or universal  
angled ridge end caps

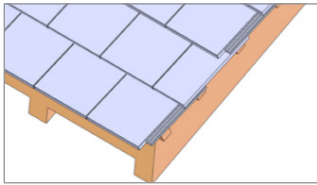


Universal dry verge units

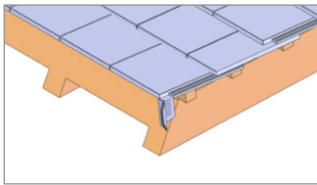
## Installation Procedure



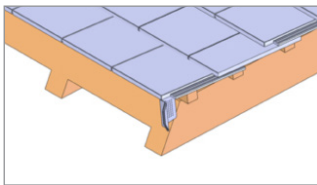
1. Install the tiling battens with a 40mm overhang over the brick or barge board. For refurbishment projects install a new tiling batten to the underside of the existing tiling batten.



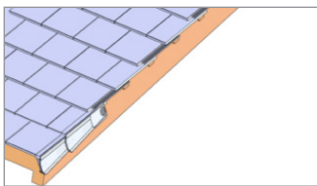
2. Set tiles flush with the battens. For refurbishment projects remove existing mortar bedding and install new tiling batten to the underside of the existing tiling batten.



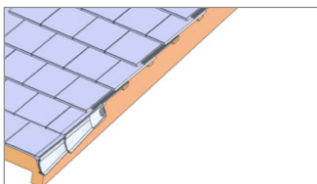
3. Starting at the bottom edge of the roof, insert the starter piece into the front end of the verge unit and mark out the starter position on the fascia and barge board. Remove the unit and mechanically fix the starter piece into position through the grid with a 40 x 3.35mm screw.



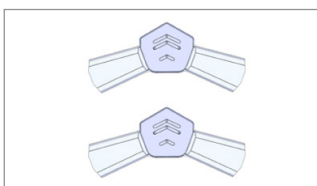
4. Slide the first verge unit over the tile at the eaves and into the starter kit fitting it under the head laps to ensure the unit is firmly held in place. Fix the unit through the top grid into the batten with a 40 x 3.35mm screw.



5. Slide the next verge unit into the upper edge of the first unit. Press firmly to the tile fitting it under the head laps to ensure the unit is firmly held in place. Screw the unit through the top grid into the batten.



6. Continue the process along the barge board to the ridge. If required, insert the blanking plate over the final nail grid to prevent water ingress. Now insert the ridge cap once the other verge is completed.



7. Continue this process along the barge board on both sides until reaching the ridge. Insert a ridge cap ensuring that the flexible flaps on the ridge cap contour around the outside of the verge unit. Screw fix the ridge cap to the ridge batten.

Date of issue: June 2020