

Knauf Aquapanel® Interior Cement Board

Data Sheet



AQUAPANEL® Interior Cement Board is a solid, durable tile backing board for interior use in wet and humid areas. It is made of aggregated Portland cement with coated glass fibre mesh embedded in the back and front surfaces. The board ends are cut square and edges are reinforced for extra strength (EasyEdge®).

Now with a 25% reduction in weight, the new board offers lighter, easier and faster installation.

Knauf Application

The water and mould resistant AQUAPANEL® Interior Cement Board is designed specifically to withstand wet and humid environments, such as swimming pools, steam saunas, communal showers and kitchen areas, without swelling or disintegration it serves as a substrate for tiles or other finishing options for construction of indoor walls.

Physical Characteristics

Dimensions (mm)			Material No	Pallet Details		
Thickness	Width	Length		Boards	m ²	Tonnes (Approx)
12.5	900	1200	519734	55	59.4	0.65
12.5	900	2400	508257	55	118.8	1.30
12.5	1200	2400	508267	55	158.4	1.70

Note: 2400mm long boards are recommended for use in commercial applications. Compliance: EN 12487

Storage and Handling

AQUAPANEL® Interior Cement Board must be protected from the effects of moisture and weather before installation. Boards that have become damp must be laid flat and dried on both sides before use. The supporting surface must be able to carry the weight of the boards. A pallet of AQUAPANEL® Interior Cement Board applies a load on the floor of approx. 700kg to 2250kg (as delivered).

Always carry boards upright using a board trolley or on a pallet using a forklift truck. When setting the boards down, make sure that corners and edges are not damaged.

Compliance

EN 12467

Fibre-cement flat sheets.

Product specification and test methods.

Performance Data

Weight

Approx. (11 kg/m²).

Fire Performance

Building material class according to EN 13501.

A1 non-combustible.

Bending Strength

Bending strength (MPa) according to EN 12467 ≥ 7 .

Bending Radius

Min. bending radius for 900/1200/1250mm wide board 1m when dry.

Dry bulk density

(kg/m³) according to EN 12467 Approx. 750m³.

Strength

Supports tiling up to 50kg/m².

Product Features

- Weight reduction from 15kg/m² to now only 11kg/m².
- Improved score and snap technique, with easier cutting.
- 100% water resistant.
- Mould and mildew resistant.
- Ready keyed for tiling - only one layer required for tile finish.
- Robust and reliable with high impact resistance and sound insulation.
- Hygienic and manufactured from sustainable materials.

Application/Installation

Suitable Substrates

Timber studs can be used, however for best results with AQUAPANEL® Interior Cement Board we recommend lightweight metal Knauf Acoustic 'C' studs. Using metal studs ensures accuracy, and they will not move or twist due to shrinkage or water ingress. In commercial applications set studs at maximum 600mm centres. In domestic/small commercial applications with timber studs, set at maximum 450mm centres.

Application Temperature

Allow time for the boards to acclimatise to the ambient temperature and moisture conditions before installation. The material, ambient air and background temperature must not be below +5 °C.

Jointing

Two types of joint treatments are available:

For large commercial projects we recommend:

Joints are formed using the AQUAPANEL® Interior Joint Adhesive (PU) material no: 49376.

Other jointing methods available.

For domestic/small commercial projects we recommend:

Joints are formed using flexible tile adhesive in conjunction with AQUAPANEL® Interior Joint Tape material no: 258339.

Cutting

Knauf AQUAPANEL® Interior Cement Board is easily and accurately cut using a coarse bladed saw, or by simply using "score and snap" techniques.

Installation

AQUAPANEL® Interior Cement Board is fixed horizontally to a vertical stud frame. In addition to horizontal mounting, vertical mounting is also possible. Depending on requirements it is possible to use single or double-layer AQUAPANEL® Interior Cement Board or a combination with other Knauf plasterboards.

Fixing

Two methods of fixing are recommended:

For large commercial projects we recommend:

Knauf AQUAPANEL® Interior Cement Boards are laid horizontally. Start at one end and align the first board along the studs. Secure the board with 25mm Knauf AQUAPANEL® Maxi Screws (SN) material no: 87319/431010, at maximum 250mm centres, ensuring that the screws are at least 15mm from the board edge. Countersink screw head flush with front surface of the board, but do not overdrive the screws.

For domestic/small commercial projects we recommend:

Knauf AQUAPANEL® Interior Cement Board should be screwed to the framework at maximum 250mm centres, with screws 15mm from the board edge.

Use 25mm Knauf AQUAPANEL® Maxi Screws (SN) material no: 87319/431010 if fixing into metal studs, and 39mm AQUAPANEL® Maxi Screws (SN) material no: 87283/53500, if fixing into timber studs. Ensure all joints between boards are staggered and leave a 3mm gap. Countersink screw head flush with front surface of the board, but do not overdrive the screws.

Related Products

Knauf AQUAPANEL® Interior Cement Board should be used in conjunction with the following products:

Knauf AQUAPANEL® 25mm Maxi Screws (SN) material no: 87319 1000pack / 431010 100pack.

Knauf AQUAPANEL® 39mm Maxi Screws (SN) material no: 53500 500pack / 87283 100pack.

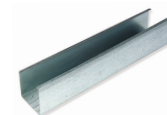
Knauf AQUAPANEL® 39mm Maxi Screws (SN) Collated material no: 87317 1000pack.

Knauf AQUAPANEL® Interior Joint Tape 48mmx20m material no: 258339.

Knauf AQUAPANEL® Interior Joint Filler and Skim Coat - White 20Kg bag material no: 131095.

Knauf AQUAPANEL® Interior Joint Adhesive PU 310ml material no: 49376.

Knauf Acoustic 'C' Studs, gauge 0.60 Size / Webb 50/70.



Top Tips

Knauf AQUAPANEL® Interior Cement Board can be tiled on both sides but we recommend using the smooth side which contains AQUAPANEL® markings, the rough side of the product contains batch markings so the product can be identified on-site.

Health & Safety

Refer to the product MSDS and also the Knauf Guidance for Safe Material Management document:

MSDS: <http://www.knauf.co.uk/product-data-sheets>

Safe Material Management: <http://www.knauf.co.uk/literature>

Sustainability Credentials

Please view Product Sustainability Credentials Sheet:

<http://www.knauf.co.uk/product-data-sheets>



KNAUF

Website

www.knauf.co.uk

Customer Service

Tel: 0800 521 050

Fax: 0800 521 205

Knauf

Kemsley Fields Business Park

Sittingbourne

Kent ME9 8SR