

TF200 THERMO

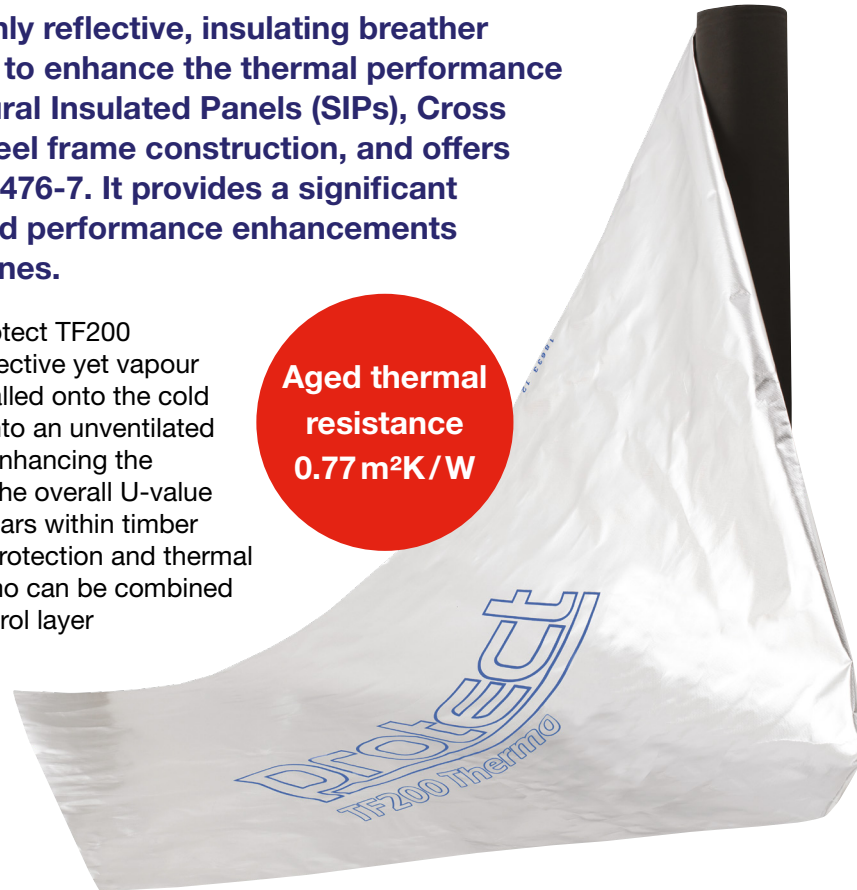
LOW EMISSIVITY INSULATING BREATHER MEMBRANE

Protect TF200 Thermo is a robust, highly reflective, insulating breather membrane which has been developed to enhance the thermal performance of external timber frame walls, Structural Insulated Panels (SIPs), Cross Laminated Timber (CLT) panels and steel frame construction, and offers Class 1 surface spread of flame to BS 476-7. It provides a significant thermal benefit along with strength and performance enhancements over other reflective breather membranes.

Produced in the UK of triple ply construction, Protect TF200 Thermo's innovative design provides a highly reflective yet vapour permeable, low emissivity outer layer. When installed onto the cold side of the insulation on an external wall facing into an unventilated airspace it effectively blocks infra red radiation, enhancing the thermal performance of the airspace and hence the overall U-value of the wall. It has been proven in use for many years within timber frame constructions, providing reliable weather protection and thermal performance enhancement. Protect TF200 Thermo can be combined with the Protect VC Foil Ultra air and vapour control layer which is installed on the warm side of the insulation to deliver optimum cost savings and the ultimate in thermal efficiency.

Protect TF200 Thermo has achieved independently verified Environmental Product Declaration (EPD) certification, providing specifiers with clear sustainability and life cycle assessment data.

**Aged thermal
resistance
0.77 m²K/W**



BENEFITS

- Aligned with STA Advice Note 18, with aged thermal resistance of 0.77 m²K/W, incorporating printing and using typical 600 mm stud centres.
- Resists the passage of water, wind blown snow and dust into the interior of the building.
- Low emissivity reflective surface enhances the thermal performance of the wall.
- Helps to meet the Building Regulations requirements in the UK and Ireland.
- Corrosion and damage resistant reflective surface.
- UV and heat stabilised.
- Good nail tear resistance compared with alternative membranes.
- High burst strength, tough and durable.
- Unaffected by conditions found in timber frame walls.
- Meets the permeability requirements recommended by TRADA and NHBC.
- BM TRADA independently certified for all applications.
- Third party verified and certified EPD available.



TF200 THERMO

LOW EMISSIVITY INSULATING BREATHER MEMBRANE

Description

Produced in the UK of triple ply construction, Protect TF200 Thermo is supported with blue branding to aid ease of installation on the cold side of the insulation.

Dimensions

Roll size:	Roll weight:
0.30 m x 100 m (30 m ²)	4.6 kg
0.60 m x 100 m (60 m ²)	9.2 kg
2.70 m x 100 m (270 m ²)	42 kg
3.00 m x 100 m (300 m ²)	46 kg
1.50 m x 50 m (75 m ²)	12 kg

Appearance

High purity, aluminium membrane with micro perforated upper surface and embossed lower surface.

Compatibility

As with all nonwoven spunbond materials, do not lay in direct contact with undried timber preservatives (whether water or solvent based).

For more information visit: glidevaleprotect.com/tf200thermo

IMPROVEMENT IN THERMAL RESISTANCE VALUES				
Wall heat flow	Airspace (mm)	Unventilated airspace		Improvement with Protect TF200 Thermo
		with no special treatment (m ² K/W)	with Protect TF200 Thermo facing into airspace (m ² K/W)	
Horizontal	>20	0.18	0.77* (aged)	328%

PERFORMANCE TO BS EN 13859-2:2010		
	MD	CD
*Nail tear strength (N) to BS EN 12310-1 modified to BS EN 13859-2	239	243
*Tensile strength (N/50mm) to BS EN 12311-1 modified to BS EN 13859-2	210	205
Water vapour resistance to BS EN ISO 12572	0.36 MNs/g / 0.071 S _d	
Total thermal resistance (m ² K/W) to BS EN ISO 8990 & BS EN 15976 (incorporates printing)	0.77* (aged)	
Emissivity of the surface (ε) unaged to BS EN 15976	0.02**	
Emissivity of the surface (ε) aged to BS EN 15976	0.03**	
Weight (g/m ²) to BS EN 1849-2	150	
Resistance to water penetration to BS EN 13111	Pass - Class W2 No leakage (aged)	

* Independently tested by National Physics Laboratories (NPL) in a typical UK house with timber frame wall cavity and verified by BM TRADA.

** Independently tested by a European notified laboratory.

MD = Machine Direction (along roll). CD = Cross Direction (across roll).

Specification clause:

External, reflective breather membrane to be Protect TF200 Thermo supplied by Glidevale Protect, 2 Brooklands Road, Sale, Cheshire M33 3SS.
T: +44 (0)161 905 5700
F: +44 (0)161 905 2085
E: info@glidevaleprotect.com

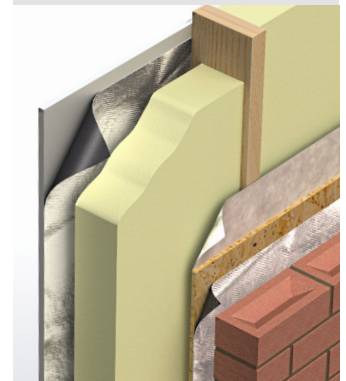
External wall breather membrane to be non-woven PP core, with a permeable high purity aluminium foil layer.

To achieve a thermal resistance of 0.77 m²K/W to BS EN ISO 8990 & BS EN 15976 (aged – incorporates printing) and a vapour resistance of 0.36 MNs/g / 0.071 S_d to BS EN ISO 12572.

Breather membrane to be fitted into wall on the cold side of the insulation in accordance with TRADA recommendations and manufacturer's instructions.

TOP TIP

Use the membrane solution of Protect TF200 Thermo, TF InterFoil and VC Foil Ultra within a timber frame panel to achieve thermal efficiency and potential insulation cost savings.



Related products

Protect VC Foil Ultra AVCL membrane: glidevaleprotect.com/vcfoilultra

Protect TF InterFoil breather membrane: glidevaleprotect.com/tfinterfoil

Environmental Product Declaration available from: glidevaleprotect.com/epdthermo



Glidevale Protect, 2 Brooklands Road, Sale, Cheshire, M33 3SS

T: +44 (0)161 905 5700 F: +44 (0)161 905 2085

info@glidevaleprotect.com

Glidevale Protect

glidevaleprotect.com

Glidevale Protect maintains a policy of continuous development and reserves the right to amend product specifications without notice. The company is a division of Building Product Design Ltd. Company registration 3944123. Printed on sustainably sourced paper.

CI/SfB (47)
Uniclass Pr_25_57_10_68

glidevale
protect

