



Specialist
Drainage
Distribution



Stanley John Ltd (or SJL) have been established since 1996 and has been fondly known as a family run business. We are an independent company that specialise in supplying to the construction, civil engineering and groundworks industry. We maintain high stock levels in order to cater for high demands all year round. We spend a significant amount of time researching products and manufacturers in order to provide the best possible service to our customers. As a result we can pride ourselves on being able to supply high quality products, along with a quick delivery from stock, at very reasonable rates. We also have a trade counter where customers can get advice from our fully trained staff. Otherwise, we are just a phone call or email away. SJL are small enough to care, and yet big enough to cope. We see ourselves as more than just specialist distributors.

Stanley John Ltd. Unit 89, Third Street East
Greenham Business Park, Newbury, Berkshire RG19 6HW

📞 01635 524224

✉️ sales@stanleyjohn.com

🌐 stanleyjohn.com

MANHOLE COVERS & GULLY GRATINGS	4
GEOTEXTILES, GEOGRIDS & EROSION CONTROL	16
GRASS, DRIVEWAY & ROOT PROTECTION	22
LINE DRAINAGE CHANNEL	26
STEEL MANHOLE COVERS & FRAMES	30
PAVING & PERMEABLE SYSTEMS	36
STORMWATER CELL UNITS	40
DAMP PROOF MEMBRANES & ACCESSORIES	48
TWINWALL DUCTING & ACCESS CHAMBERS	50
COMPOSITE MANHOLE COVERS & FRAMES	60
WATER PIPE, BARRIER PIPE & FITTINGS	64
CONSTRUCTION SITE ACCESSORIES	70
TELESCOPIC AIR VENTS & ACCESSORIES	78
CELLCORE HX RANGE	82
WASTEWATER MANAGEMENT	86
HYDROBRAKES & FLOW CONTROL UNITS	102
INDEX	104



MANHOLE COVERS & GULLY GRATINGS

All of our access covers and gully gratings comply with the British Standard BS EN 124 as a minimum requirement. We then require all municipal castings, that are loading class B125 to F900 groups, possess the British Standard Kitemark. Most of our stocked castings then carry a further quality assurance complaint to UK Highways Agency HA104/09. Our superior HA104/09 products are designed to be long lasting in heavily trafficked environments.

Highway Ductile Iron D400 & HA 104/09 Access Covers



Designed and manufactured to meet enhanced requirements of the Highways Agency's Specification.

- For use in Group 4 Class D400 carriageway
- All BSI Kitemarked & BS EN 124:1994
- Manufactured from strong Ductile Iron

Code	Length	Width	Depth	Qty	Weight
SJDKM000	450mm	450mm	100mm	1	45kg
SJDKM001	600mm	450mm	100mm	1	66kg
SJDKM002	600mm	600mm	100mm	1	71kg
SJDKM002/150	600mm	600mm	150mm	1	79kg
SJDKM003	675mm	675mm	100mm	1	92kg
SJDKM003/150	675mm	675mm	150mm	1	103kg
SJDKM006	750mm	600mm	100mm	1	122kg
SJDKM006/150	750mm	600mm	150mm	1	134kg
SJDKM004	750mm	750mm	100mm	1	128kg
SJDKM004/150	750mm	750mm	150mm	1	141kg
SJDKM007	900mm	600mm	100mm	1	140kg
SJDKM007/150	900mm	600mm	150mm	1	158kg
SJDKM005	900mm	900mm	100mm	1	155kg
SJDKM008	1220mm	675mm	100mm	1	146kg
SJDKM008/150	1220mm	675mm	150mm	1	220kg

Ductile Iron D400 Access Covers



Carries the British Standard Kitemark as standard.

- For use in Group 4 Class D400 environment
- All BSI Kitmarked & BS EN 124:1994
- Manufactured from strong Ductile Iron

Code	Length	Width	Depth	Qty
SJDKM000A	450mm	450mm	100mm	1
SJDKM001A	600mm	450mm	100mm	1
SJDKM002A	600mm	600mm	100mm	1
SJDKM002A/150	600mm	600mm	150mm	1
SJDKM003A	675mm	675mm	100mm	1
SJDKM003A/150	675mm	675mm	150mm	1
SJDKM006A	750mm	600mm	100mm	1
SJDKM006A/150	750mm	600mm	150mm	1
SJDKM004A	750mm	750mm	100mm	1
SJDKM007A	900mm	600mm	100mm	1
SJDKM007A/150	900mm	600mm	150mm	1
SJDKM005A	900mm	900mm	100mm	1
SJDKM008A	1220mm	675mm	100mm	1
SJDKM008A/150	1220mm	675mm	150mm	1
SJDKM031A	1200mm	900mm	100mm	1

Single Seal Ductile Iron C250 Access Covers



Designed to combine high strength and light weight.

- For use in Group 3 Class C250 environment
- All BS EN 124:1994 & Third Party Accredited
- Manufactured from strong Ductile Iron

Code	Length	Width	Depth	Qty
SJDKM010	450mm	450mm	50mm/75mm	1
SJDKM011	600mm	450mm	50mm/75mm	1
SJDKM012	600mm	600mm	50mm/75mm	1
SJDKM018	600mm Diameter		50mm/75mm	1
SJDKM015	750mm	600mm	50mm/75mm	1
SJDKM016	900mm	600mm	50mm/75mm	1

To view our composite cover range,
please go to page 59



Single Seal Ductile Iron B125 Access Covers



Designed to combine high strength and light weight.

- For use in Group 2 Class B125 environment
- All BSI Kitemarked & BS EN 124:1994
- Manufactured from strong Ductile Iron

*Also available in 75mm depth

Code	Length	Width	Depth	Qty	Weight
SJDKM028	450mm Diameter		40mm	1	17kg
SJDKM017	450mm	450mm	40mm	1	20kg
SJDKM019	600mm	450mm	40mm	1	24kg
SJDKM020	600mm	450mm	75mm	1	32kg
SJDKM021	600mm	600mm	40mm	1	41kg
SJDKM022	600mm	600mm	75mm	1	44kg
SJDKM027	600mm Diameter		75mm	1	45kg
SJDKM030	675mm	675mm	40mm	1	48kg
SJDKM023*	750mm	600mm	40mm	1	50kg
SJDKM024	750mm	750mm	40mm	1	52kg
SJDKM025*	900mm	600mm	50mm	1	62kg
SJDKM051	900mm	900mm	50mm	1	92kg
SJDKM029	1220mm	600mm	40mm	1	90kg

Cast Iron A15 Access Covers



Designed and manufactured for use in locations of pedestrian and pedal cycle traffic only.

- For use in Group1 Class A15 environment
- Has a single seal labyrinth arrangement
- Manufactured from cast Iron

Code	Length	Width	Depth	Qty	Weight
SJD031	450mm	450mm	40mm	1	20kg
SJD032	600mm	450mm	40mm	1	27kg
SJD033	600mm	600mm	40mm	1	37kg
SJD034	750mm	600mm	40mm	1	56kg
SJD035	900mm	600mm	40mm	1	58kg

Ask us about our concrete chamber sections.
For other access chambers,
please go to pages 34-35 and page 60



Light Duty Cast Iron/Polypropylene Access Covers



Designed to locate on top of PPIC chambers.

- For use in Group 1 Class A15
- Has a single seal labyrinth arrangement
- Manufactured from cast Iron/Polypropylene

Code	Length	Width	Depth	Qty	Weight
SJD029	450mm Diameter		40mm	1	10kg

Light Duty Polypropylene Access Cover



Designed to locate on top of PPIC chambers for light domestic and light vehicular access.

- Has a 3.5 tonne GLW loading
- Has a single seal labyrinth arrangement
- Manufactured from Polypropylene

Code	Length	Depth	Qty	Weight
SJD028	450mm Diameter	40mm	1	4kg

Surface Boxes Ductile Iron D400 & Grade A BS750



Designed to be easy to remove in Emergency situations on carriageways.

- For use in Group 4 Class D400
- All fully comply with BS EN 124:1994
- Manufactured from strong Ductile Iron

Code	Length	Width	Depth	Qty	Weight
SJD044	380mm	230mm	100mm/125mm	1	26kg

Surface Boxes Ductile Iron BS5834 & Grade A Heavy Duty



Combines high strength and light weight in a stable double-triangular design.

- High Strength and Light Weight
- Stable double-triangular design
- Manufactured from strong Ductile Iron

Code	Length	Width	Depth	Qty	Weight
SJD046	150mm	150mm	100mm	1	10kg
SJD047	225mm	225mm	100mm	1	13kg
SJD048	300mm	300mm	100mm	1	18kg

Gully Grating D400 HA104-09 Compliant



Normally hinged to suit vehicles travelling in left lane, but can be changed on request to right lane.

- For use in Group 4 Class D400 carriageway
- All BSI Kitemarked & BS EN 124:1994
- Manufactured from strong Ductile Iron

Code	Length	Width	Depth	Qty	Weight
SJDKM037	430mm	370mm	100mm	1	34kg
SJDKM037/150	430mm	370mm	150mm	1	35kg
SJDKM047/150	420mm	420mm	150mm	1	35kg
SJDKM048/150	440mm	400mm	150mm	1	38kg

Pedestrian Area Ductile Iron D400 Gully Grating



Designed for use in kerbside of carriageways and estate roads including pedestrian streets.

- For use in Group 4 Class D400 environment
- All BSI Kitemarked & BS EN 124:1994
- Manufactured from strong Ductile Iron

Code	Length	Width	Depth	Qty	Weight
SJDKM043	430mm	370mm	100mm	1	32kg

Ductile Iron C250 Gully Grating



Normally hinged to suit vehicles travelling in left lane, but can be changed on request to right lane.

- For use in Group 3 Class C250 environment
- All BSI Kitemarked & BS EN 124:1994
- Manufactured from strong Ductile Iron

Code	Length	Width	Depth	Qty	Weight
SJDKM045	360mm	310mm	75mm	1	20kg

Pedestrian Area Ductile Iron C250 Gully Grating*



Designed for use in kerbside of carriageways subject to pedestrian traffic and road vehicles.

- For use in Group 3 Class C250 environment
- All BSI Kitemarked & BS EN 124:1994
- Manufactured from strong Ductile Iron

*Also available in 75mm depth

Code	Length	Width	Depth	Qty	Weight
SJDKM044	336mm	308mm	100mm	1	26kg

Gully Grates Ductile Iron D400 Catch Pit - HA104-09 compliant



Designed to provide optimum strength whilst maximising the available drainage area.

- For use in Group 4 Class D400 carriageway
 - All BSI Kitemarked & BS EN 124:1994
 - Manufactured from strong Ductile Iron
- *Flange 3 sides only

Code	Length	Width	Depth	Qty	Weight
SJDKM036/150	600mm	600mm	150mm	1	74kg
SJDKM036	600mm	600mm	100mm	1	68kg
SJDKM036A*	600mm	600mm	100mm	1	65kg

Halkyn Ductile Iron D400 Gully Grating



Designed for use in the kerbside of carriageways and estate roads including all pedestrian streets. HA104/09 product available on request

- For use in Group 4 Class D400 environment
- All BSI Kitemarked & BS EN 124:1994
- Manufactured from strong Ductile Iron

Code	Length	Width	Depth	Qty	Weight
SJC028	480mm	370mm	150mm	1	50kg

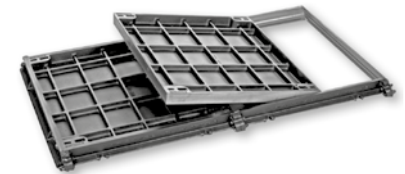
ERMATIC® range - The modular solution

Ermatic® is a comprehensive and highly specified range of access covers for a wide variety of underground services :

- **Sewerage:** inspection pits for sludge chambers, access shafts for large plants, etc.
- **Telecommunications:** cable jointing chambers, etc.
- **Electricity:** lighting, signals, transformer pits, cable joint boxes, etc.

In the following environments :

- **Airports and ports**
- **Railways**
- **Tunnels**
- **Power stations**
- **Water treatment and purification plants**
- **Manufacturing plants**
- **Industries**
- **Exhibition centres, leisure parks, stadiums, etc**

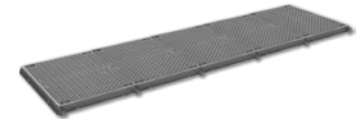


1/2/3 covers unit

Ermatic® products assure protection against damage, debris or aggressive chemicals, and allow designers to conceal underground services, maximising productive use of the unobstructed surface.

Environment, security, ergonomics, the Ermatic® range benefits from the advanced technology of EJ :

- **Aesthetics of the project is enhanced:** the covers can be recessed to receive a similar material to the surround
- **Rapid and easy access for maintenance and the network deployment**
- **Security reinforced** by the strength and stability of the covers



Continuous duct cover

Modular construction

The use of modular elements gives a vast range of sizes. Frame elements (side frames and end plates) are assembled using bolts and aluminium joints to provide linear openings for even the longest ducts.

Above clear opening spans of 1200 mm, Ermatic® units use removable beams supported in boxes which are fixed to the frames. This allows the construction of units to suit the largest openings.



Cover with removable beams



GEOTEXTILES, GEOGRIDS & EROSION CONTROL

With a variety of ranges and strengths available. Providing a cost effective solution for separation, reinforcement, filtration and erosion control. These products are ideal for various applications such as domestic weed control, horse arenas, general construction, sub base reinforcement, contaminated soil separation and water filtration. Available from small 'easy to handle' packs to large rolls for quick and efficient installation.

STANTRACK SG 609 Woven Geotextile



Designed to conform to old Transport Highways Spec for road and earthworks separation.

- Strength tested to EN ISO 10319
- Puncture resistance tested to EN ISO 12236
- Available in Lightweight, Heavyweight, High Flow and High Strength

Code	Length	Width	Depth	Qty	Weight
SJG001	100m	4.5m	0.40mm	1	78g/m2
SJG004	10m	4.5m	0.40mm	1	78g/m2

STANTRACK 1000 NW8 Non-Woven Geotextile



Our most commonly specified alternative to Terram 1000.

- Strength tested to EN ISO 10319
- Puncture resistance tested to EN ISO 12236
- Available in Thermally Bonded and Needle Punched

Code	Length	Width	Depth	Qty	Weight
SJG003	100m	4.5m	1mm	1	100g/m2
SJG014	10m	4.5m	1mm	1	100g/m2

SJL Biaxial Geogrid



Designed to reinforce granular sub-bases and provide a strong and positive interlock with granular materials.

- Strength tested to EN ISO 10319/ ASTM D 6637
- Available in various tensile strengths
- Manufactured from 100% Stabilized UV Polypropylene

Code	Length	Width	Depth	Qty	Strength
SJGG20	50m	3.95m	N/A	1	20kN/m2
SJGG30	50m	3.95m	N/A	1	30kN/m2
SJGG40	50m	3.95m	N/A	1	40kN/m2

Hi Visibility Geotextile



Used as a separation layer between contaminated and non contaminated soils.

- Highly visible membrane
- Warns of potential danger when uncovered
- Prevents contaminated particles mixing with non contaminated above

Code	Length	Width	Depth	Qty	Weight
SJF003	100m	4.5m	0.40mm	1	78g/m2

Inbitex Non-Woven Geotextile



Exclusive to the Formpave Aquaflow systems.

- Strength tested to EN ISO 10319
- Puncture resistance tested to EN ISO 12236
- Inbitex® provides initial filtering and cleansing of run-off

Code	Length	Width	Depth	Qty	Weight
SJG008	100m	4.5m	N/A	1	130g/m2

SC Intergrid Geogrid



Designed to create triangular shaped apertures with a high degree of molecular orientation.

- Punched and stretched
- Ribs have orientations in three equilateral directions
- Posseses a high degree of molecular orientation which is continuous through the node

Code	Length	Width	Depth	Qty	Weight
SJG007	50m	4m	N/A	1	48.5kg

TriAx Geogrid



Designed to produce major cost savings and considerable performance benefits.

- Reduces excavated soil
- Controls differential settlement
- Reduces disturbance and weakening of sensitive subgrade formations

Code	Length	Width	Depth	Qty	Weight
SJG006	75m	4m	N/A	1	N/A
SJG013	50m	4m	N/A	1	N/A

Geotextiles & Geogrids are regularly used alongside Paving & Stormwater systems.

For Paving & Stormwater units, please go to pages 36-46



We're open from
7.45am to 5pm,
Mon-Fri.



GRASS, DRIVEWAY & ROOT PROTECTION

Any area subject to pedestrian, animal or vehicular traffic will be subject to erosion control. These products are designed for ground reinforcement and erosion prevention but they also take into consideration the surrounding environments and visual appearances of landscaped areas. Can be used by professional landscapers and DIY enthusiasts alike. Innovative designs but with traditional values.

RITE-L-EDGE Edge Restraint



Ultimate edge restraint for hard landscape surfaces.

- L' shaped section for added strength
- Flexible with high retaining properties
- Manufactured from durable extruded Aluminium Alloy 6063

Code	Length	Width	Depth	Qty	Weight
C571	2.44m	50mm	25mm	28	29.5kg
C572	2.44m	50mm	38mm	22	28.5kg
C573	2.44m	50mm	50mm	19	28.5kg
C574	2.44m	50mm	64mm	17	28.5kg
C575	2.44m	75mm	75mm	13	29.5kg
C576	2.44m	100mm	100mm	10	27.6kg
C537(pins)Steel	255mm	N/A	N/A	250	22.7kg



GEOcell geosynthetic cellular confinement system



Designed to protect against erosion from water, wind and weight bearing loads

- Slope protection as cells prevent movement
- Earth retention as retains infill in walls, embankments and barriers
- Manufactured from lightweight, expandable and flexible thermoplastic

Code	Panel size	Depth	Qty	Weight
SJGC001	20m ² *	50mm	1	12kg
SJGC002	20m ² *	75mm	1	18kg
SJGC003	20m ² *	100mm	1	24kg
SJGC004	20m ² *	150mm	1	36kg
SJGC005	20m ² *	200mm	1	48kg

*other panel sizes available

Rite Pave



Ideal for paths, driveways, grass and gravel car parks and stabilisation of slopes and embankments.

- Tough, durable and maintenance free
- Load capacity up to 320 Ton per m²
- Perfect solution for worn, rutted or displaced grass and gravel areas

Code	Panel size	Depth	Qty	Weight
SJR001	1m ²	40mm	1	6kg

RITE-EDGE Edge Restraint



Designed with a life expectancy of 27 years in a hot and humid climate such as Florida.

- Manufactured to a T6 hardness
- Fixing stakes are to T6 hardness
- Manufactured from durable extruded Aluminium Alloy 6063

Code	Length	Width	Depth	Qty	Weight
C531	2.438m	3mm Thickness	102mm	14	20.5kg
C531RT	1.2m	3mm Thickness	102mm	4	3kg
C532	2.438m	3mm Thickness	102mm	14	20.5kg
C532RT	1.2m	3mm Thickness	102mm	4	3kg
C533	2.438m	3mm Thickness	102mm	14	20.5kg
C534	2.438m	3mm Thickness	102mm	14	20.5kg
C535	2 per length	3mm Thickness	305mm	28	3.2kg
C557	2.438m	4.5mm Thickness	102mm	12	26.4kg
C560	2.438m	4.5mm Thickness	140mm	10	36.2kg





LINE DRAINAGE CHANNEL

Our market leading range of surface water drainage ensures we can provide the best solution for your commercial and domestic projects. In a climate where we are experiencing more frequent and extreme rainfall, it is important our infrastructures, gardens, pavements and roads are protected from the build up of excess rainwater. Most of our line drainage is made using renewable energy and is also 100% recyclable.

Line Drainage Channel



Designed for an easy and effective way of removing troublesome standing water.

- Quick and simple on-site construction
- Clip down grate covering and clip on ends caps
- Manufactured in the UK and made from recycled polypropylene

Code	Length	Width	Depth
SJLD001	1m	100mm	90mm

SlotDrain Line Drainage Channel



Designed as a discreet way of removing unwanted standing water from outside paved areas.

- Slot together for quick and easy installation
- Can be cut down in length with clip detail at 6 points along length
- Multiple rainwater exit points with easy cut outlets

Code	Length	Width	Depth
SJLD004	1m	100mm	135mm

SJL-DRAIN Line Drainage Channel



Designed as a discreet channel for paved finished areas.

- Invisible finish as only a 10mm wide slot
- Can be central slot or offset slot finish
- Available in Galvanised Steel or Stainless steel finish

Code	Length	Width	Depth	Slot Position
SJLD007	1m	100mm	240mm	Offset
SJLD008	1m	100mm	240mm	Centre

Self Line Drainage Channel



Light and easy to move, used primarily in domestic applications such as drives and gardens.

- Galvanised steel grate A15 loading option
- Ductile iron grate B125 loading option
- Snap on locking system

Code	Length	Width	Depth
SJLD002 A15	1m	100mm	100mm
SJLD003 B125	1m	100mm	100mm

Tec Line Drainage Channel



Ideal for pedestrian areas, car parks, shopping centres and similar applications.

- Load classification C250 to D400
- Nominal width of 100mm-300mm available
- Tec is also available in a shallow channel

Code	Length	Width	Depth
SJLD005	1m	100mm	135mm

Pro Line Drainage Channel



Suited for commercial areas, loading bays, highways & motorways, but can also be used for residential applications and public facilities.

- Load classification D400 to F900
- Nominal width of 100mm-300mm available
- Pro is also available in a shallow channel

Code	Length	Width	Depth
SJLD006	1m	100mm	145mm



STEEL MANHOLE COVERS & FRAMES

We have an extensive range of stainless and galvanized steel access covers available, for light duty to heavy duty environments. We can offer badging, sealed, lockable, hinged and assisted lift options. Recessed for paving, concrete and internal floor finishes. Also pressed or chequer plate solid top versions available. Our UK based design and fabrication team can manufacture to any specific requirements.

Manhole Cover and Frame - Recessed



Designed for use in areas of block paving for continuity of surface finish and pattern.

- Galvanised to BS EN ISO 1461
- Non-standard sizes available on request
- Manufactured from Galvanised Mild Steel plate

Code	Length	Width	Depth	Qty
SJS001	300mm	300mm	80mm/100mm	1
SJS002	450mm	450mm	80mm/100mm	1
SJS003	600mm	450mm	80mm/100mm	1
SJS004	600mm	600mm	80mm/100mm	1
SJS005	750mm	600mm	80mm/100mm	1
SJS064	675mm	675mm	80mm/100mm	1
SJS006	750mm	750mm	80mm/100mm	1
SJS007	900mm	600mm	80mm/100mm	1
SJS008	1220mm	675mm	80mm/100mm	1

Optional Extras

Heavy Duty loading, Sealed & Locking, Badging, Multiple Covers, Duct run designs

Manhole Cover and Frame - Recessed



Designed for use internally where a concrete/vinyl floor is required.

- Galvanised to BS EN ISO 1461
- Brass & Stainless edge finishes available
- Manufactured from Galvanised Rolled Steel plate

Code	Length	Width	Depth	Qty
SJS025	300mm	300mm	40mm	1
SJS024	450mm	450mm	40mm	1
SJS010	600mm	450mm	40mm	1
SJS011	600mm	600mm	40mm	1
SJS012	750mm	600mm	40mm	1
SJS013	900mm	600mm	40mm	1
SJS043	675mm	675mm	40mm	1

Our UK based fabrication team can manufacture items to any specific requirement or special design



Manhole Cover and Frame - Solid Top



Designed for a wide range of clear openings and load classes.

- Galvanised to BS EN ISO 1461
- Non-standard sizes available on request- 75mm/100mm deep frame
- Manufactured from Galvanised Rolled Steel or Chequer Plate

Code	Length	Width	Depth	Qty
SJCP001	300mm	300mm	25-150mm	1
SJCP002	450mm	450mm	25-150mm	1
SJCP003	600mm	450mm	25-150mm	1
SJCP004	600mm	600mm	25-150mm	1
SJCP005	750mm	600mm	25-150mm	1
SJCP006	750mm	750mm	25-150mm	1
SJCP007	900mm	600mm	25-150mm	1
SJCP008	900mm	900mm	25-150mm	1
SJCP009	1000mm	1000mm	25-150mm	1
SJCP010	657mm	675mm	25-150mm	1

Optional Extras

Heavy Duty loading, Sealed & Locking, Badging, Multiple Covers, Duct run designs

STAKKAbox™ Chambers

ULTIMA Standard




STAKKAbox™ ULTIMA offers a flexible access chamber system with no compromise on strength. Due to the design and the material used (GRP).

ULTIMA Connect



ULTIMA Connect has been developed to offer greater flexibility in chamber sizes without compromising the strength of the standard ULTIMA system.

Modula




STAKKAbox™ Modula is a range of modular and structural preformed access chambers. The system provides contractors with a means of constructing access chambers quickly and inexpensively.

Fortress



STAKKAbox™ Fortress is a range of modular and structural preformed access chambers. The fortress system is moulded in HDPE and possesses excellent strength to weight properties.

Quad



STAKKAbox™ Quadbox is a range of modular and structural preformed access chambers, supplied by Cubis. Available in the 102, 104 and 106 sizes.


AX-S™ Covers

Composite (A15 - B125 - C250)



AX-S™ Composite covers offer a lightweight cover with no reduction in loading performance. A wide range of sizes can be manufactured utilising multi-cover frames.

Composite (C250)



AX-S™ Composite covers offer a lightweight cover with no reduction in loading performance. A wide range of sizes can be manufactured utilising multi-cover frames.

Concrete (B125)



AX-S™ Concrete Infill covers offer flexibility in size and design. A wide range of sizes can be manufactured utilising multi-cover frames and there are options for bespoke customer badging.

Recessed (A15 - B125)



AX-S™ Recessed cover range has developed a reputation in the construction industry for being high-quality, safe to use, value for money and secure when installed.

Hinged (D400)



The hinge lock range of D400 ductile iron access covers fully comply with BS EN 124:1994 and carry the British Standard kitemark.

Drop in (D400)



Drop in D400 ductile iron access covers fully comply with BS EN 124:1994 and carry the British Standard kitemark.

STAKKAbox™ Chambers & AX-S™ Covers

		AX-S™ Covers							STAKKAbox™ Chambers					
		A15	B125	B125	A15	B125	C250	D400	D400	ULTIMA Standard	ULTIMA Connect	Modula*	Fortress	Quad
Dimensions in mm		Composite	Composite	Concrete	Recessed	Recessed	Composite	Hinged	Drop in					
L	W													
150	150													
225	225													
300	300	■	■	■	■	■	■					■		
380	230			■	■	■	■		■			■		
420	240			■										
450	300	■	■	■	■	■	■					■		
450	450	■	■	■	■	■	■	■				■	■	
500	500	■	■	■	■	■	■							
530	380		■	■	■	■	■			■				
550	315			■	■	■	■							
600	450	■	■	■	■	■	■					■	■	
675	675				■	■	■				■	■	■	
725	255			■										■
730	460			■	■	■	■							
750	600		■	■	■	■	■				■	■		
750	675			■				■			■	■		
750	750		■	■	■	■	■		■			■		
800	800	■	■	■		■	■			■		■		
885	530		■	■		■	■			■				
900	450	■	■	■		■	■	■						
900	600	■	■	■		■	■	■			■	■	■	
900	675								■		■	■	■	
900	900	■	■	■		■	■							
915	445		■	■		■	■			■			■	■
915	915		■	■		■	■						■	■
960	610					■	■							
1000	600						■				■			
1000	1000	■	■	■			■				■			
1160	380		■	■		■	■			■				
1200	600	■	■	■		■	■			■			■	
1200	675										■			
1220	675								■				■	
1200	900		■	■	■	■	■		■		■		■	
1200	1200	■	■	■	■	■	■			■			■	
1220	1220						■						■	■
1310	610		■	■		■	■	■		■			■	■
1300	850			■			■	■						
1380	530		■							■				
1500	750		■	■		■	■	■		■				
1500	1500		■	■		■	■				■			
1690	710					■	■							
1705	710			■										
1790	880	■	■				■			■				
1870	530									■				
1900	1200	■	■				■				■			
2000	600	■	■				■				■			
2285	710					■	■							
2320	740			■						■				
2500	1200	■	■				■				■			

*Commonly supplied STAKKAbox™ Modula sizes, due to component format of the chamber other sizes are available.



Conventional Paving



Designed for use on Driveways, Patios and Paths.

- Solid and reliable rectangular range
- Available in a distinctive range of 8 colours
- Easily combined to create individual patterns and designs

Depth	Blocks per pack	Pack Coverage m2
50mm	424	8.48
60mm	424	8.48
80mm	296	5.92

Colours Available



Autumn Yellow



Burnt Red



Charcoal Grey



Golden Brindle



Natural



Purbeck



Red Brindle



Vendage

PAVING & PERMEABLE SYSTEMS

Choosing the right block paving can help set a project apart. Aesthetics are important and it is also essential to consider if the paving used can help address any issues. Now you can choose between standard or permeable paving and still have a wide selection of colours and style options. Set a project apart from others and also improve sustainability credentials, health and safety and flood resistance at the same time.

Permeable Paving System



Designed for use on Driveways, Patios and Paths requiring protection from heavy rainfall flooding.

- Available in 3 sizes-small, medium and large
- Available in 6 colourways
- Suitable for use where a SUD's system is mandatory

Depth	Blocks per pack	Pack Coverage m2
60mm	424	8.48
80mm	296	5.92

Colours Available



Autumn Yellow



Burnt Red



Charcoal Grey



Golden Brindle



Natural



Purbeck



Red Brindle



Vendage



We're just at the
end of a phone
if you need any
help with orders;
01635 524224.



STORMWATER CELL UNITS

Stormwater cell units are the tried, tested and versatile answer to the effective management of excessive rainfall and the reduction of flood risk. Due to their lightweight and therefore ease of handling, these units can be quickly assembled on site. In addition, all units can be brick bonded for greater strength and stability and can be mixed and matched to create the optimum installation for every application.

AquaCell Eco Stormwater Cell unit



Designed for shallow, non-trafficked, landscaped applications.

- BBA Cert no 03 / 4018 approved
- Has a vertical loading of 17.5T/m² and lateral loading of 4.0T/m²
- Manufactured from specially reformulated recycled material

Code	Length	Width	Depth	Qty
6LB025	1m	500mm	400mm	1

AquaCell Prime Stormwater Cell unit



Designed for shallow and deep regular trafficked landscaped applications.

- BBA Cert no 03 / 4018 pending
- Has a vertical loading of 45.6T/m² and lateral loading of 7.0T/m²
- Manufactured from specially reformulated recycled material

Code	Length	Width	Depth	Qty
6LB075	1m	500mm	400mm	1

AquaCell Core Stormwater Cell unit



Designed for deep regular and heavy trafficked landscaped applications.

- BBA Cert no 03 / 4018 approved
- Has a vertical loading of 56T/m² and lateral loading of 7.7T/m²
- Manufactured from specially reformulated recycled material

Code	Length	Width	Depth	Qty
6LB100	1m	500mm	400mm	1

AquaCell Plus Stormwater Cell unit



Designed for where inspectability is required and for use in all applications.

- BBA Cert no 03 / 4018 approved
- Has a vertical loading of 65T/m² and lateral loading of 8.5T/m²
- Manufactured from specially reformulated recycled material

Code	Length	Width	Depth	Qty
6LB200	1m	500mm	400mm	1

AquaCell Ancillary Components



Designed for use with any AquaCell unit.

Product	Code
OsmaDrain S/S Reducer	6D099
OsmaDrain S/S Adaptor-Thinwall Clay Spigot	6D129
OsmaDrain P/E Adaptor 160mm	4D916
Shear Connector	6LB102
Flange Adaptor 150mm	6LB104
Clip	6LB105
Domestic Silt Trap	6LB300
Silt Trap	6LB600
Extension Kit	6SC205
Twinwall S/S Adaptor	6TW141
UltraRib S/S Adaptor	6UR141
SuperSleeve Adaptor 150mm	SA15/2
SuperSleeve Adaptor 150mm (for use with 6LB104)	TA/2
SuperSleeve Adaptor 225mm (for use with 6LB106)	TA/4

Polystorm Lite Modular Cell System Stormwater Cell unit



Designed for use in landscaped pedestrian or other non-load applications.

- 95% void ratio to retain large volumes of water run-off
- Load bearing capacity of 20 Ton/m²
- 50 year design life and 100% recyclable

Code	Length	Width	Depth	Qty	Weight
PSM2	1m	500mm	400mm	1	7kg

Polystorm Modular Cell System Stormwater Cell unit



Designed for use in lightly trafficked and loaded applications.

- 95% void ratio to retain large volumes of water run-off
- Load bearing capacity of 40 Ton/m²
- 50 year design life and 100% recyclable

Code	Length	Width	Depth	Qty	Weight
PSM1	1m	500mm	400mm	1	9kg

Polystorm Xtra Modular Cell System Stormwater Cell unit



Designed for use in deeper build depths for heavily trafficked and heavy loaded applications.

- 95% void ratio to retain large volumes of water run-off
- Load bearing capacity of 83 Ton/m²
- 50 year design life and 100% recyclable

Code	Length	Width	Depth	Qty	Weight
PSM3	1m	500mm	210mm	1	5kg

Polystorm-R Modular Cell System Stormwater Cell unit



Designed for use in lightly trafficked and pedestrian applications.

- 95% void ratio to retain large volumes of water run-off
- Load bearing capacity of 40 Ton/m²
- Made from specially selected and controlled recycled materials

Code	Length	Width	Depth	Qty	Weight
PSM1A	1m	500mm	400mm	1	9kg

Rainwater Diffuser Unit



Designed to allow rainwater to be infiltrated into/out of a porous sub-base.

- Connection to suit either 110mm or 160mm
- Available in single, double and triple sized units
- Manufactured from Polypropylene core and (HDPE) surround

Code	Length	Width	Depth	Qty
SJP001	708mm	354mm	150mm	1



Our trade counter is open to trade and the public



Cut costs not corners, bends or junctions.

Drainage is all we do. A simple, everyday, below ground range that combines consistent quality with great value for money. **It's not world changing, it's Just basically better.**

Just below ground drainage.

Just a little more than you'd expect from a value range. Just is a range of below ground drainage pipe and fittings designed for those situations where good, rather than best, is good enough. Drainage that gets the job done without fuss or frills, but also without cutting corners. Add to that fast availability and compliance with BS EN 13476 and BS EN 1401 requirements and Just Drain is the ideal choice for any project. **Find just what you're looking for.**





DAMP PROOF MEMBRANES & ACCESSORIES

Manufactured and blown from extruded polyethylene in the UK. Used with underground stormwater storage systems and as tanking systems. Also working in conjunction with radon, methane, CO2 and hydrocarbon gas barriers systems to contain rising gasses across the footprint of buildings. Membranes can be installed as an oversite membrane, between a blinded hardcore bed and the base concrete or between base concrete and screed level.

Impervious Membrane



Designed for underground stormwater storage systems and permeable paving systems.

- High resistance to puncture
- Restricts water entering the sub-grade
- Preserves the sub-grade structural integrity

Code	Length	Width	Type	Weight
SJDPM003	25m	4m	RADON	27.62kg
SJDPM004	25m	4m	300 microns	27.62kg
SJDPM013	12.5m	4m	500 microns	23kg
SJDPM024	15m	4m	SC MEMBRANE	16.56kg

Joining Tape



Various joint tapes designed to be used with Impervious Membrane

Code	Length	Width	Type	Colour
SJDPM010	33m	100m	S/SIDED	BLACK
SJDPM021	50m	100m	D/SIDED	CLEAR
SJDPM022	15m	100m	BITUMASTIC	BLACK
SJDPM024	15m	100m	SC TAPE	GREEN



TWINWALL DUCTING & ACCESS CHAMBERS

Suitable for the protection of electricity, gas and water supply services. Also for street lighting cables and fibre optic for telecommunications cabling. Ideal for gravity surface water and stormwater applications. It can be used for Highway filter and carrier drains, Rail Tracks, golf courses and land drainage. A broad range of fittings and accessories to suit various projects. Sizes and accessories from 50mm – 600mm from stock.

Twinwall Pipe Ducting



Designed for use with underground utilities and also surface water removal.

- Low weight, Flexible, Durable and High Strength
- BBA approved and HAPAS Roads & Bridges certified.
- Available in a range of colours which comply with NJUG classifications

NJUG Colour Coding

Colour : Black Code : BK Application : Electricity	Colour : Green Code : GR Application : CCTV
Colour : Blue Code : BU Application : Water	Colour : Orange Code : OR Application : Traffic Signal / Street Lights
Colour : Yellow Code : YE Application : Gas	Colour : Purple Code : PL Application : Motorway Communications

*Please add colour code as required Eg. 300TW6BU (300mm x 6 Mtr Blue Twinwall)

Code	Type	Internal DIA	External DIA	Length
94TW6	Non-Perforated	94mm	110mm	6m
137TW6	Non-Perforated	137mm	160mm	6m
150TW6	Non-Perforated	150mm	178mm	6m
150TW6PF	Fully Perforated	150mm	178mm	6m
225TW6	Non-Perforated	225mm	268mm	6m
225TW6PF	Fully Perforated	225mm	268mm	6m

Code	Type	Internal DIA	External DIA	Length
300TW6	Non-Perforated	300mm	354mm	6m
300TW6PF	Fully Perforated	300mm	354mm	6m
375TW6	Non-Perforated	375mm	426mm	6m
375TW6PF	Fully Perforated	375mm	426mm	6m
450TW6	Non-Perforated	450mm	510mm	6m
450TW6PF	Fully Perforated	450mm	510mm	6m
600TW6	Non-Perforated	600mm	680mm	6m
600TW6PF	Fully Perforated	600mm	680mm	6m

Gas Singlewall Corrugated Pipe Ducting



Designed for use with Gas pipes.

- Complies with transo
- Kitemarked to BS4962
- Supplied with one coupler

Code	Size	Length
60GD050	60mm PERFORATED	50m
100GD050	100mm PERFORATED	50m
160GD050	160mm PERFORATED	50m

Landcoil Drainage Singlewall Ducting



Designed for Agricultural use.

- Available in Black, Blue or Yellow
- Kitemarked to BS4962
- Manufactured in HDPE

Code	Length	Width
60D050	50m	60mm Diameter Perforated
60D150	150m	60mm Diameter Perforated
80D050	50m	80mm Diameter Perforated
80D100	100m	80mm Diameter Perforated
100D025	25m	100mm Diameter Perforated
100D050	50m	100mm Diameter Perforated
100D100	100m	100mm Diameter Perforated
160D050	50m	160mm Diameter Perforated
200D040	40m	200mm Diameter Perforated

Often used along with Geotextiles.

To view this range, please go to pages 16-19

Twinwall Pipe Accessories



Designed for use with surface water twinwall pipe ducting.

- Fittings and accessory products that are quick and efficient to use
- Size range from 63mm-600mm from stock
- Special designs can be fabricated within 2 days

Code	Product	Diameter	Code	Product	Diameter
63TWC	Coupler	50/63mm	137TB90	Bend 90°	137/160mm
94TWC	Coupler	94/110mm	137TB45	Bend 45°	137/160mm
137TWC	Coupler	137/160mm	150TB90	Bend 90°	150/178mm
150TWC	Coupler	150/178mm	150TB45	Bend 45°	150/178mm
225TWC	Coupler	225mm	150TB30	Bend 30°	150/178mm
300TWC	Coupler	300mm	150TB15	Bend 15°	150/178mm
375TWC	Coupler	375mm	225TB90	Bend 90°	225mm
450TWC	Coupler	450mm	225TB45	Bend 45°	225mm
600TWC	Coupler	600mm	225TB30	Bend 30°	225mm
110TRS	Ring seal	110mm	225TB15	Bend 15°	225mm
150TRS	Ring seal	150mm	300TB90	Bend 90°	300mm
225TRS	Ring seal	225mm	300TB45	Bend 45°	300mm
300TRS	Ring seal	300mm	300TB30	Bend 30°	300mm
375TRS	Ring seal	375mm	300TB15	Bend 15°	300mm
450TRS	Ring seal	450mm	375TB90	Bend 90°	375mm
600TRS	Ring seal	600mm	375TB45	Bend 45°	375mm
63TB90	Bend 90°	50/63mm	300TB30	Bend 30°	375mm
63TB45	Bend 45°	50/63mm	300TB15	Bend 15°	375mm
94TB90	Bend 90°	94/110mm	375TB90	Bend 90°	450mm
94TB45	Bend 45°	94/110mm	375TB45	Bend 45°	450mm

Code	Product	Diameter	Code	Product	Diameter
450TB30	Bend 30°	450mm	300TY225	45° Branch	300 x 225mm
450TB15	Bend 15°	450mm	300TT225	90° Branch	300 x 225mm
600TB90	Bend 90°	600mm	375TY225	45° Branch	375 x 225mm
600TB45	Bend 45°	600mm	375TT225	90° Branch	375 x 225mm
600TB30	Bend 30°	600mm	450TY225	45° Branch	450 x 225mm
600TB15	Bend 15°	600mm	450TT225	90° Branch	450 x 225mm
94TY45	45° Branch	94/110mm	600TY225	45° Branch	600 x 225mm
94TT90	90° Branch	94/110mm	600TT225	90° Branch	600 x 225mm
150TY45	45° Branch	150/178mm	375TY300	45° Branch	375 x 300mm
150TT90	90° Branch	150/178mm	375TT300	90° Branch	375 x 300mm
225TY45	45° Branch	225mm	450TY300	45° Branch	450 x 300mm
225TT90	90° Branch	225mm	450TT300	90° Branch	450 x 300mm
300TY45	45° Branch	300mm	600TY300	45° Branch	600 x 300mm
300TT90	90° Branch	300mm	600TT300	90° Branch	600 x 300mm
375TY45	45° Branch	375mm	450TY375	45° Branch	450 x 375mm
375TT90	90° Branch	375mm	450TT375	90° Branch	450 x 375mm
450TY45	45° Branch	450mm	600TY375	45° Branch	600 x 375mm
450TT90	90° Branch	450mm	600TT375	90° Branch	600 x 375mm
600TY45	45° Branch	600mm	600TY450	45° Branch	600 x 450mm
600TT90	90° Branch	600mm	600TT450	90° Branch	600 x 450mm
225TY150	45° Branch	225 x 150mm	94TRD63	Reducer	94/110 x 50/63mm
225TT150	90° Branch	225 x 150mm	150TRD94	Reducer	150/178 x 94/110mm
300TY150	45° Branch	300 x 150mm	225TRD94	Reducer	225 x 94/110mm
300TT150	90° Branch	300 x 150mm	600TRD94	Reducer	600 x 94/110mm
375TY150	45° Branch	375 x 150mm	225TRD150	Reducer	225 x 150mm
375TT150	90° Branch	375 x 150mm	300TRD150	Reducer	300 x 150mm
450TY150	45° Branch	450 x 150mm	375TRD150	Reducer	375 x 150mm
450TT150	90° Branch	450 x 150mm	450TRD150	Reducer	450 x 150mm
600TY150	45° Branch	600 x 150mm	600TRD150	Reducer	600 x 150mm
600TT150	90° Branch	600 x 150mm	300TRD225	Reducer	300 x 225mm

Code	Product	Diameter
375TRD225	Reducer	375 x 225mm
450TRD225	Reducer	450 x 225mm
600TRD225	Reducer	600 x 225mm
375TRD300	Reducer	375 x 300mm
450TRD300	Reducer	450 x 300mm
600TRD300	Reducer	600 x 300mm
450TRD375	Reducer	450 x 375mm
600TRD375	Reducer	600 x 375mm
600TRD450	Reducer	600 x 450mm



Gully Pots



For use in trapped and untrapped applications. Light, versatile and made from HDPE.

- Tapered outlet eliminates the need for multi adaptors
- A rotational moulded design ensures greater strength
- Trapped gullies with dual outlets

Code	Product	Dimensions	Outlet
SJP002	Midi Gully	600mm x 300mm	110mm
SJP003	Road Gully	900mm x 450mm	160-178mm Tapered
SJP004	Road Gully	750mm x 450mm	160-178mm Tapered

Twinwall Pipe Ducting Coil



Designed for use with underground utilities.

- Strong yet flexible alternative
- Available in a range of colours which comply with NJUG classifications
- Manufactured from Polyethylene

NJUG Colour Coding

Colour : Black Code : BK
Application : Electricity

Colour : Green Code : GR
Application : CCTV

Colour : Blue Code : BU
Application : Water

Colour : Orange Code : OR
Application : Traffic Signal / Street Lights

Colour : Yellow Code : YE
Application : Gas

Colour : Purple Code : PL
Application : Motorway Communications

*please add colour code as required Eg. 94TW50BK (94/110mm x 50 Mtr black Twinwall)

Code	Internal DIA	External DIA	Length
40TW50	31mm	40mm	50mm
50TW50	40mm	50mm	50mm
63TW50	50mm	63mm	50mm
75TW50	75mm	90mm	50mm
94TW50	94mm	110mm	50mm
137TW50	137mm	160mm	50mm

BT & Telecommunications Duct



Telecommunications ducting systems. Grey is fully approved for use on the national BT network. Green is generally used in cable TV applications.

- Available in Grey and Green
- For all BT network & Telecommunications cabling
- Range of accessories available

Code	Diameter	Description	Colour
BT54P	54mm	3m Pipe	Grey
BT54B22.5	54mm	22.5° Bend	Grey
BT54B45	54mm	45° Bend	Grey
BT54B90	54mm	90° Bend	Grey
BT54C	54mm	Connector	Grey
BT54E	54mm	End Cap	Yellow
BT96P	96.5mm	6m Pipe	Grey
BT96B22.5	96.5mm	22.5° Bend	Grey
BT96B45	96.5mm	45° Bend	Grey
BT96B90	96.5mm	90° Bend	Grey
BT96C	96.5mm	Connector	Grey
BT96E	96.5mm	End Cap	Red
BTG54P	54mm	3m Pipe	Green
BTG54B11.25	54mm	11.25° Bend	Green
BTG54B22.5	54mm	22.5° Bend	Green

Code	Diameter	Description	Colour
BTG54B45	54mm	45° Bend	Green
BTG54B90	54mm	90° Bend	Green
BTG54BR	54mm	45° Branch	Green
BTG54C	54mm	Connector	Green
BTG54DC	54mm	Double Connector	Green
BTG54E	54mm	End Cap	Yellow
BTG96P	96.5mm	6m Pipe	Green
BTG96B11.25	96.5mm	11.25° Bend	Green
BTG96B22.5	96.5mm	22.5° Bend	Green
BTG96B45	96.5mm	45° Bend	Green
BTG96B90	96.5mm	90° Bend	Green
BTG96C	96.5mm	Connector	Green
BTG96DC	96.5mm	Double Connector	Green
BTG96E	96.5mm	End Cap	Red
BTG96T	96.5mm	Tee Swept	Green

Do you require agreed rates for specific products? Contact our Sales Manager with any enquiries; 07730812702

SJL



Composite Cover



- Lids are corrosion, impact and weather resistant
- No inherent scrap value, Complies with EN124 (BS EN 124:1994)
- B125 Loading

Code	Length	Width	Depth
SJCC001	300mm	300mm	75mm
SJCC002	300mm	450mm	75mm
SJCC003	450mm	450mm	75mm
SJCC004	450mm	600mm	75mm
SJCC005	600mm	600mm	75mm

COMPOSITE MANHOLE COVERS & FRAMES

Composites offer many advantages over traditional cast or ductile iron covers such as lightweight, reduced risk of theft, non-conductive, rust-free and non-slip. Composites are growing popular with general construction for traffic signals, electricity, water and gas distribution, security sensitive and watertight applications. Also use up to 50% less energy during production compared to cast and steel covers.

Can't find what you're looking for?
For more cover sizes, loadings and depth options, please go to pages 4-11
Special requirements available on request

Access Chamber System



Designed for use with Composite Manhole Covers.

- Available Assembled or Flat packed
- A15-D400 Loadings available
- Larger sizes available from stock

Code	Length	Width	Depth Range
SJAB001	300mm	300mm	150-335mm
SJAB002	300mm	450mm	150-335mm
SJAB003	450mm	450mm	150-335mm
SJAB004	450mm	600mm	150-335mm
SJAB005	600mm	600mm	150-335mm

Modular chamber systems also available.
Potentially any size chamber is achievable.

For all ducting & accessories,
please go to pages 50-57



We're open from
7.45am to 5pm,
Mon-Fri.



WATER PIPE, BARRIER PIPE & FITTINGS

A comprehensive range of MDPE and HDPE pipes, fittings and accessories for drinking water and sewer drainage installations. Our barrier pipes combine the benefits of polyethylene with aluminium. The layers of polyethylene are formed over an aluminium layer which together offer barrier protection from contaminated ground. Coils and straight lengths available in diameters 25 to 180mm. Electrofusion to compression fittings, including tool and machinery hire also available.

Puriton Barrier Water Pipe



For the conveyance of potable water in contaminated ground.

- Available in Coiled lengths up to 50m and 110mm diameter
- Comprehensive range of fittings and accessories available
- Available in Straight lengths up to 6m and 110mm diameter

50m

Code	Diameter	Length
25BPA50	25mm	50m
32BPA50	32mm	50m
63BPA50	63mm	50m
90BPA50	90mm	50m
110BPA50	110mm	50m

6m

Code	Diameter	Length
25BPA6	25mm	6m
32BPA6	32mm	6m
63BPA6	63mm	6m
90BPA6	90mm	6m
110BPA6	110mm	6m

Polyethylene Water Pipe



For the conveyance of potable water.

- Available in Coiled lengths up to 150m and 180mm diameter
- Comprehensive range of fittings and accessories available
- Available in Straight lengths up to 18m and 200mm

Code	Diameter	Length
20PW050	20mm	50m
20PW100	20mm	100m
20PW150	20mm	150m
25PW050	25mm	50m
25PW100	25mm	100m
25PW150	25mm	150m
32PW050	32mm	50m
32PW100	32mm	100m
32PW150	32mm	150m
50PW050	50mm	50m
50PW100	50mm	100m
50PW150	50mm	150m
63PW050	63mm	50m
63PW100	63mm	100m
63PW150	63mm	150m
90PW050	90mm	50m
90PW100	90mm	100m
110PW050	110mm	50m
125PW050	125mm	50m

Polyethylene Water Pipe

	Length	Width	Qty
Manufactured from Polyethylene-Straight lengths	Up to 18m	Up to 200mm Diameter	1

Plasson Class 4 Water Pipe Fittings



Designed for use with Polyethylene, Copper, Lead, Steel, and PVC pipes.

- Universal fitting
- Makes an immediate joint on existing pipework
- Connects metric and also imperial sizes

Plasson Mechanical Water Pipe Fittings



Designed for use with Polyethylene pipe.

- In use for over 45 years
- Safe and reliable connections
- Comprehensive range of fittings and accessories available

Plasson Pushfit Water Pipe Fittings



Designed for use with Polyethylene, Copper, Polybutylene and PEX pipes.

- A range of innovative push-fittings
- Provides connectivity from pipe sizes 20mm-63mm
- Connects Polyethylene to Copper, Polybutylene and PEX pipes

Plasson Electrofusion Water Pipe Fittings



Designed for use with Plasson Smart-Fuse, Fusamatic and non-Fusamatic controllers.

- For reliable high performance
- Have a long system life
- WRAS approved

Plasson Valves and Accessories



Plasson Valves have been in service in excess of 45 years in many applications.

- High quality and long life service
- Many types of valves & fitting available
- WRAS Approved

Mechanical fittings

PLASSON
mechanical



Dedicated fittings

BLACK 2 BLUE™



Universal fittings

PLASSON



Specialist fittings



PLASSON
valves



Liners



Adapters





CONSTRUCTION SITE ACCESSORIES

High quality professional products and accessories for the construction and industrial sectors. A variety of premium strong barrier fencing, road pins, underground warning tapes, detectable tapes, earth wire, marker paints and draw rope. These high grade site accessories are rigorously tested to meet the demands of today's industrial and domestic markets. Used in many industry sectors including construction, groundworks, engineering and agriculture.

Barrier Fencing Mesh



- Available in 4 colourways - Orange, Yellow, Blue and Green
- Promotional/Warning tapes can be laminated to the mesh
- *Orange supplied as standard unless otherwise requested

Code	Height	Length
SJF004	1m	50m

Fencing Pins



- Essential for the fast and quick installation of plastic barrier fencing mesh and barrier tapes
- Durable round steel with a point at one end to allow easy penetration of tough ground conditions

Code	Height	Diameter
SJF005	1300mm	10mm

Marker Tapes



- Designed to enable various service pipes to be located without damage
- Earth wire and detectable tapes also available

Code	Type	Colour	Size
SJMT001	ELECTRIC BELOW	YELLOW	365m
SJMT002	SEWER BELOW	RED	365m
SJMT003	WATER BELOW	BLUE	365m
SJMT004	TELEPHONE BELOW	GREEN	365m
SJMT004	GAS BELOW	YELLOW	365m

Marker Paint



- High quality fast drying and hard wearing acrylic marking paint
- For use on concrete, tarmac, wood and composites
- Other colours also available on request

Code	Colour	Size
SJMP001	YELLOW	750ml
SJMP002	BLUE	750ml
SJMP003	WHITE	750ml
SJMP004	RED	750ml

Hi-Vis Manhole Protectors



- Protection that will avoid unnecessary and costly damage to drain covers
- Optional caution warning triangle which stands on top of the cover itself, helping with visibility

Code	Length	Width
SJHV001	600mm	600mm

Manhole Keys



- Standard keys sold in pairs
- Other keys available to order

Code	Type	Length
SJHDK001	Heavy Duty	540mm
SJHDK	Heavy Duty	160mm
SJMDK	Medium Duty	95mm
SJLDK	Light Duty	150mm
SJTBK	Turnbuckle Key	60mm

Ancillary Castings



- Suitable for domestic and pedestrian applications
- Most sizes available in Alloy, Cast Iron and Galvanised Cast Iron

Code	Size (mm)	Size (inches)	Description
SJARG125	125mm DIA	5"	Alloy Grid
SJARG140	140mm DIA	5.5"	Alloy Grid
SJARG150	150mm DIA	6"	Alloy Grid
SJARG175	175mm DIA	7"	Alloy Grid
SJARG197	197mm DIA	7.75"	Alloy Grid
SJARG205	205mm DIA	8"	Alloy Grid
SJARG225	225mm DIA	9"	Alloy Grid
SJASG120	120mm ²	5"	Alloy Grid
SJASG140	140mm ²	5.5"	Alloy Grid
SJASG150	150mm ²	6"	Alloy Grid
SJASG175	175mm ²	7"	Alloy Grid
SJASG205	205mm ²	8"	Alloy Grid
SJASG225	225mm ²	9"	Alloy Grid
SJASG250	250mm ²	10"	Alloy Grid
SJARG140LKD	140mm DIA	5.5"	Hinged & Locking
SJARD197LKD	197mm DIA	7.75"	Hinged & Locking
SJARG273LKD	273mm DIA	10.78"	Hinged & Locking
SJARG363LKD	363mm DIA	14.50"	Hinged & Locking
SJASG120LKD	120mm ²	5"	Hinged & Locking
SJASG150LKD	150mm ²	6"	Hinged & Locking
SJASG225LKD	225mm ²	9"	Hinged & Locking
SJASG300LKD	300mm ²	12"	Hinged & Locking



- Suitable for domestic and pedestrian applications
- Most sizes available in Alloy, Cast Iron and Galvanised Cast Iron

Code	Size (mm)	Size (inches)	Description
SJBRG125	125mm DIA	5"	Black Iron Grid
SJBRG140	140mm DIA	5.5"	Black Iron Grid
SJBRG150	150mm DIA	6"	Black Iron Grid
SJBRG175	175mm DIA	7"	Black Iron Grid
SJBRG193	193mm DIA	7.5"	Black Iron Grid
SJBRG197	297mm DIA	7.75"	Black Iron Grid
SJBRG205	205mm DIA	8"	Black Iron Grid
SJBRG225	225mm DIA	9"	Black Iron Grid
SJBRG283	283mm DIA	11"	Black Iron Grid
SJBRG363	363mm DIA	14.50"	Black Iron Grid
SJBSG120	120mm ²	5"	Black Iron Grid
SJBSG150	150mm ²	6"	Black Iron Grid
SJBSG175	175mm ²	7"	Black Iron Grid
SJBSG205	205mm ²	8"	Black Iron Grid
SJBSG225	225mm ²	9"	Black Iron Grid
SJBSG300	300mm ²	12"	Black Iron Grid
SJBSG150LKD	150mm ²	6"	Hinged & Locking
SJBSG225LKD	225mm ²	9"	Hinged & Locking
SJBSG300LKD	300mm ²	12"	Hinged & Locking
SJARP110	110mm	4"	Alloy Rodding Point
SJARP160	160mm	6"	Alloy Rodding Point

Flexible Coupling Range



- Comprehensive range from 40mm – 2100mm available
- Saddles, tees, elbows and caps available
- Tooling and accessories also available

Code	Size (mm)	Description
SJDC95	80-95mm	Drain Coupling
SJDC115	100-115mm	Drain Coupling
SJDC125	110-125mm	Drain Coupling
SJDC135	120-135mm	Drain Coupling
SJDC165	150-165mm	Drain Coupling
SJDC175	160-175mm	Drain Coupling
SJDC195	180-195mm	Drain Coupling
SJDC225	210-225mm	Drain Coupling
SJSC115	100-115mm	Standard Coupling
SJSC120	110-121mm	Standard Coupling
SJSC137	120-137mm	Standard Coupling
SJSC175	150-175mm	Standard Coupling
SJSC200	175-200mm	Standard Coupling
SJSC225	200-225mm	Standard Coupling
SJSC290	265-290mm	Standard Coupling
SJSC385	360-385mm	Standard Coupling
SJAC1221	110-122/80-95mm	Adaptor Coupling
SJAC5144	110-125/110-115mm	Adaptor Coupling
SJAC1922	170-192/110-122mm	Adaptor Coupling
SJAC1923	170-192/121-136mm	Adaptor Coupling
SJAC1924	170-192/144-160mm	Adaptor Coupling
SJAC4000	121-136/110-121mm	Adaptor Coupling
SJAC6000	180-200/160-180mm	Adaptor Coupling
SJAC9001	260-285/180-205mm	Adaptor Coupling

We stock below ground drainage and accessories. If you need any help, call us on **01635 524224**





TELESCOPIC AIRVENTS & ACCESSORIES

If a building uses a suspended ground floor, it is important to provide ventilation into the underfloor void. This prevents condensation, removes stagnant air and is particularly important in areas where radon or methane gas may pose a problem. Ventilation is important regardless of whether the suspended floor is block and beam or traditional joist and board construction. The ideal method for providing ventilation is to use an underfloor ventilator and airbrick.

Telescopic Underfloor Vent



Designed to provide ventilation below suspended ground floors.

- Telescopic and Adjustable for a step of 3,4 or 5 brick courses
- Equivalent area of 6000mm² per unit
- Special grille included to prevent entry of vermin

Code	Width	Height	Qty
SJT001	220mm	225mm - 375mm Height	20

Telescopic Underfloor Vent Accessories



Designed to be used with the Telescopic Underfloor Vent.

- Satisfies NHBC requirements, complies with BS EN 13141-1:2004
- All extension sleeves can be slotted together to form longer section if required
- Eliminates the need for on-site modifications

Code	Description	Qty
SJT007	+150mm Vertical Extension	20
SJT008	+115mm Front Extension	20
SJT011	+100mm Rear Extension	20
SJT012	Duct Adaptor to suit 110mm	20

Airbrick Airvent



Designed to be used with the Telescopic Underfloor Vent.

- Satisfies NHBC requirements, complies with BS EN 13141-1:2004
- Equivalent area of 6170mm² per airbrick
- Manufactured from UV Stabilised Polypropylene

Code	Colour	Width	Length	Depth	Qty
SJT002	Buff	215mm	60mm	69mm	20
SJT003	Terracotta	215mm	60mm	69mm	20
SJT004	Black	215mm	60mm	69mm	20
SJT013	Grey	215mm	60mm	69mm	20
SJT014	Brown	215mm	60mm	69mm	20
SJT015	White	215mm	60mm	69mm	20
SJT009	Terracotta (Clay)	215mm	60mm	69mm	20
SJT010	Buff (Clay)	215mm	60mm	69mm	20
SJT005	Buff wall weep	10mm	100mm	65mm	50
SJT006	Terracotta wall weep	10mm	100mm	65mm	50



We're just at the end of a phone if you need any help with orders; 01635 524224.



CELLCORE HX RANGE

Ground Heave is the expansion of soil, typically caused by an increase in moisture content. Our range of ground heave solutions are designed to protect floor slabs, ground beams and pile caps from the effects associated with expansive soil types. In addition to ground heave protection, the product range includes systems which incorporate permanent formwork, insulation and passive ground gas venting options.

Cordek CellCore HX S



Designed to be used under suitably re-inforced floor slabs.

- Wide range of profiles and grades to suit most applications
- BBA certified
- Reduces upwards force transmitted to the structure

Cordek CellCore HX B



Designed to be used under suspended beams.

- Wide range of profiles and grades to suit most applications
- BBA certified
- Reduces upwards force transmitted to the structure

Product Sizes

Standard Panel – 2400mm x 1200mm

Beams widths – 2400mm x 1200mm to 300mm (in 25mm increments)

Depth of HX panel should be determined by the heave potential:

Soil Analysis	NHBC Category	Predicted Heave	HX depth to achieve 'Equivalent void'	
Plasticity Index	Shrinkage Category	Void (mm)	HXS (mm)	HXB (mm)
10-20	Low	50	90	85
20-40	Medium	100	160	155
40-60	High	150	225	220

Grade of product is determined by depth of concrete to be cast on the Cellcore:

Soil Analysis	NHBC Category	Predicted Heave	Predicted Heave
7/10	7	10	200mm
9/13	9	13	300mm
13/18	13	18	460mm
18/24	18	24	660mm
24/32	24	32	900mm

Cordek Cellcore HX Plus



In cases where insulation is also required beneath the slab, the HX Plus range can be utilised to provide combined ground movement protection and insulation from a single product.

- Cellcore HX Plus with EPS insulation incorporated
- BBA certified
- Meets the NHBC's Technical Standards

The thermal resistance of the Cellcore HX Plus is based upon the thickness of insulation incorporated within the panels, as outlined in the table below:

Thickness	Thermal resistance (m ² c/w)
50mm	1.39
75mm	2.08
100mm	2.78
125mm	3.47
150m	4.17



Do you require
agreed rates for
specific products?
Contact our Sales
Manager with
any enquiries;
07730812702.



WASTEWATER MANAGEMENT

We are working alongside globally trusted brands, offering a full range of reliable wastewater management solutions along with professional, expert service and maintenance for your wastewater system. Our tried and tested product range includes sewage treatment plants, septic tanks, fuel and oil separators, pumping stations and grease traps.

Septic Tank - Spherical



Strong, light and watertight, the specialist design of the Spherical septic tank is ideal for easy installation and handling. A wide, flat shape guarantees minimal visual impact.

- Suitable for homes with between 5-17 occupants
- Impact resistant - manufactured from composite GRP
- CE marked to comply with Construction Products Regulations (July 2013)

Code	Capacity (ltrs)	No. of People (150 ltrs/head/day)	Diameter
AT-02.8-1.0	2800	5	2075mm
AT-03.8-1.0	3800	12	2075mm
AT-04.6-1.0	4600	17	2084mm

Gamma Septic Tank



Gamma is a direct response to market needs. An affordable and reliable septic tank that is easy to install in a range of domestic applications.

- Reduced excavation costs, saving you money
- Simple to install for reduced on-site installation time
- CE marked to comply with Construction Products Regulations

Code	Capacity (ltrs)	Overall Height	Length	Diameter
GST028	2800	1755-2255mm	2480mm	1130mm
GST040	4000	1755-2255mm	3360mm	1215mm

Sigma Septic Tank



The advanced design of the Sigma Shallow Dig delivers a robust, impact resistant and durable tank

- Less soil disposal and less backfill material - kinder to the environment
- Reduced excavation costs, saving you money
- CE marked to comply with Construction Products Regulations

Code	Capacity (ltrs)	No. of People (150 ltrs/head/day)	Diameter	Length	Invert Height
STH028	2800	5	1225mm	2955mm	500mm
STH038	3800	12	1225mm	3895mm	500mm
STH057	5700	24	1425mm	4275mm	500mm
STH071	7150	34	1920mm	3225mm	500mm
STH091	9150	47	1920mm	3960mm	500mm

Forecourt Separator

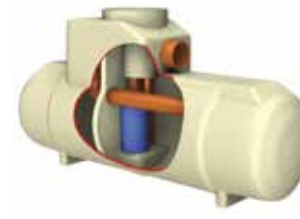


Provide the ideal solution for potential spillages likely to occur during vehicle refuelling and road tanker delivery.

- Class I and Class II design for flexibility of choice
- Light and easy to install, saving you time and money
- CE marked

Class	Capacity (ltrs)	Drainage area (m ²)	Peak flow (l/s)	Length	Diameter
1	10000	720	15	3915mm	2020mm
2	10000	720	15	3915mm	2020mm

Bypass Separator



Fully treats all flows generated by rainfall rates of up to 6.5mm/hr. This covers over 99% of all rainfall events. Flows above this rate are allowed to bypass the separator.

- Class I design
- Oil alarm system available (required by EN858-1 and PPG3)
- Maintenance from ground level

Code	Flow (l/s)	Peak Flow (l/s)	Drainage Area (m ²)	Silt Capacity (ltrs)	Oil Capacity (ltrs)	Length	Diameter
NSBE003	3	30	1670	300	45	1700mm	1350mm
NSBE004	4.5	45	2500	450	60	1700mm	1350mm
NSBE006	6	60	3335	600	90	1700mm	1350mm
NSBE010	10	100	5560	1000	150	2069mm	1220mm
NSBE015	15	150	8335	1500	225	2947mm	1220mm
NSBE020	20	200	11111	2000	300	3893mm	1220mm
NSBE025	25	250	13890	2500	375	3575mm	1420mm
NSBE030	30	300	16670	3000	450	4265mm	1420mm
NSBE040	40	400	22222	4000	600	3230mm	1920mm
NSBE050	50	500	27778	5000	750	3960mm	1920mm
NSBE075	75	750	41667	7500	1125	5841mm	1920mm
NSBE100	100	1000	55556	10000	1500	7661mm	1920mm
NSBE125	125	1250	69444	12500	1875	9548mm	1920mm

Full Retention Separator

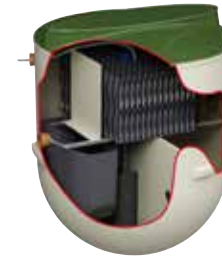


Can be used in car parks, roadways, fuel distribution depots, vehicle workshops and forecourt.

- Treats full rainfall flow intensity of 65mm/hr
- Maintenance from ground level
- Certified to EN858-1 & PPG3

Code	Flow (l/s)	Drainage Area (m ²)	Silt Capacity (ltrs)	Oil Capacity (ltrs)	Length	Diameter
NSFP003	3	170	300	30	1700mm	1350mm
NSFP006	6	335	600	60	1700mm	1350mm
NSFA010	10	555	1000	100	2610mm	1225mm
NSFA015	15	835	1500	150	3910mm	1225mm
NSFA020	20	1115	2000	200	3200mm	2010mm
NSFA030	30	1670	3000	300	3915mm	2010mm
NSFA040	40	2225	4000	400	4640mm	2010mm
NSFA050	50	2780	5000	500	5425mm	2010mm
NSFA065	65	3160	6500	650	6850mm	2010mm
NSFA080	80	4445	8000	800	5744mm	2820mm
NSFA100	100	5560	10000	1000	6200mm	2820mm
NSFA125	125	6945	12500	1250	7365mm	2820mm
NSFA150	150	8335	15000	1500	8675mm	2820mm
NSFA175	175	9725	17500	1750	9975mm	2820mm
NSFA200	200	11110	20000	2000	11280mm	2820mm

BioTec Sewage Treatment



The economical off-mains solution for single houses and uses the tried and tested aerobic biological process for the treatment of domestic sewage.

- Low-level visibility pedestrian cover
- Housing developments with up to 25 people
- 5 year guarantee options available

Code	Daily flow (m ³ /day)	BOD Load (kg/day)	Diameter	Depth
BioTec-1	1.2	0.36	1900mm	2200mm
BioTec-1IPS	1.2	0.36	1900mm	2200mm
BioTec-2	2.4	0.72	1900mm	2700mm
BioTec-2IPS	2.4	0.72	1900mm	2700mm
BioTec-3	3.6	1.1	2700mm	2600mm
BioTec-3IPS	2.6	1.1	2700mm	2600mm
BioTec-4	5	1.5	2700mm	2600mm
BioTec-4IPS	5	1.5	2700mm	2600mm

For our below ground pipe range,
please go to pages 47 & 74-75



BioDisc Domestic Sewage Treatment



For domestic dwellings without access to mains drainage, the BioDisc sewage treatment plant provides a reliable, efficient and environmentally safe solution.

- Suitable for homes with up to 18 people
- Low profile covers for minimal visual impact
- Single phase standard power

Code	Unit Size	Population	Diameter	Depth	Storage Period
BA	Single House	1 house up to 4 bedrooms	1995mm	1400mm	12 months
BA-X	Single House	1 house up to 7 bedrooms	1995mm	1400mm	9 months
BB	Multiple houses	2 houses up to 8 bedrooms	1995mm	1400mm	6 months
BC	Multiple houses	3 houses up to 12 bedrooms	2450mm	1820mm	7 months

For our below ground pipe range, please go to pages 47 & 74-75



BioFicient Sewage Treatment



Specially designed for shallow dig applications, allowing for an unobtrusive below ground installation

- Suitable for homes with up to 18 people
- Low profile covers for minimal visual impact
- Single phase standard power

Code	Population	Diameter	Length
BioFicient-1	6	1540mm	2500mm
BioFicient-2	8	1425mm	3760mm
BioFicient-3	10	1425mm	3760mm
BioFicient-4	15	1920mm	3230mm
BioFicient-5	20	1920mm	4390mm
BioFicient-6	30	1920mm	6220mm

For our below ground pipe range, please go to pages 47 & 74-75



BioDisc Commercial Sewage Treatment



Sewage treatment models for a range of commercial applications. From hotels to offices, pubs to campsites and industrial buildings.

- Fully removable covers for simple maintenance
- No compressors – No noise
- Continuous treatment even with over or under load

Code	Max Daily BOD (kg)	Max Daily flow (m ³)	Length	Width
BE	2.1	7	3340mm	2450mm
BF	3	10	4345mm	2450mm
BG	4.2	14	5235mm	2450mm
BH	4.5	15	7755mm	2455mm
BJ	6	20	7755mm	2455mm
BK	7.5	25	7755mm	2455mm
BL	9	30	7755mm	2455mm
BM	13.5	33.75	13055mm	2605mm

For our below ground pipe range,
please go to pages 47 & 74-75



BioFicient Commercial Sewage Treatment



Plant range is shipped as a single piece tank up to 300PE with modular systems available for up to 1000 PE. The BioFicient commercial range is designed in accordance with BS EN 12255

- Can be installed in trafficked areas
- Alarm protected
- Other Made To Order / bespoke options are available

Code	Max flow (m ³ /day)	Length	Volume (m ³)
17	8	7.4 m	17
23	11	9.3 m	23
34	15	7.4 m	34
38	20	8.1 m	38
42	25	8.9 m	42
47	30	9.7 m	47
55	40	11.2 m	55
67	50	13.5 m	67
80	60	15.8 m	80

For our below ground pipe range,
please go to pages 47 & 74-75



Domestic Pumping Station



For properties up to 13 people. Pumping stations require minimal maintenance, saving you time and money.

- Quick connection outlet couplings
- Designed with easy access features for maintenance
- Comes with options of monitoring systems

Code	Tank Size	Capacity (Ltrs)
DomesticPS1250	900x2080mm	1250
DomesticPS1600	900x2580mm	1600
DomesticPS+1450	1000x2000mm	1450
DomesticPS+2200	1000x2500mm	2200

Compact Pumping Station



Compact design for outbuildings, extensions, cellars, pool houses and external WC's.

- Fully automatic
- 3 pump options
- Complete pre-fabricated solution ready for installation

Code	Tank Size	Capacity (Ltrs)
CompactPS200	610x700mm	200
CompactPS400	560x1650mm	400

Grease Separators



Designed for large commercial and industrial applications such as restaurants and hotels.

- Protects mains drainage system from grease blockages
- Prevents contamination of small sewage treatment plants, reducing risk of breakdown
- Greatly reduces drain blockages, for maximum operational efficiency

Model	Diameter	Length	Capacity (Ltrs)	Flow (l/s)
NSG04	1200mm	2072mm	2000	4
NSG06	1200mm	3018mm	3000	6
NSG09	1200mm	3895mm	4000	9
NSG18	1800mm	3231mm	8000	18
NSG24	1800mm	4386mm	11000	24

Grease Traps

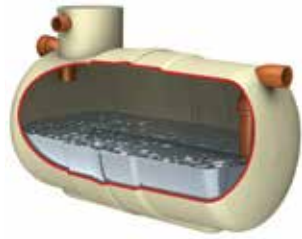


Perfect solution for a range of small commercial establishments, including small restaurants, pubs and canteens.

- Greatly reduces drain blockages, for maximum operational efficiency
- Helps improve performance of septic tanks and field drains for best results
- Prevents contamination of small sewage treatment plants, reducing risk of breakdown

Model	Capacity (Ltrs)	Length	Width	Height
2	23	1330mm	850mm	1035mm
4	45	2070mm	1200mm	1035mm

Washdown Silt Trap



Washdowns and silt traps can be used in areas such as car wash and other cleaning facilities that discharge directly into a foul drain, which feeds into a municipal treatment facility

- Light and easy to install
- Maintenance from ground level
- FACTA Class B covers

Code	Capacity (Ltrs)	Max Silt (Ltrs)	Max flow (l/s)	Length	Diameter
W1/010	1000	500	3	1123mm	1225mm
W1/020	2000	1000	5	2074mm	1225mm
W1/030	3000	1500	8	2952mm	1225mm
W1/040	4000	2000	11	3898mm	1225mm
W1/060	6000	3000	16	4530mm	1440mm
W1/080	8000	4000	22	3200mm	2020mm
W1/100	10000	5000	27	3915mm	2020mm
W1/120	12000	6000	33	4640mm	2020mm
W1/150	15000	7500	41	5435mm	2075mm
W1/190	19000	9500	52	6865mm	2075mm

For our below ground pipe range,
please go to pages 47 & 74-75

Envireau Rainwater Harvesting



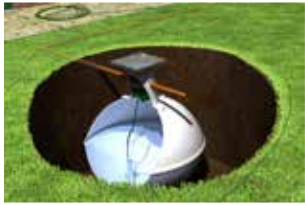
Perfect fully integrated solution for self-build projects and existing homes

- Save up to 50% of your water consumption
- Helps planning applications
- It's a system that pays for itself

Code	Roof Size (m ²)	Diameter	Height	Length
Gravity System	-	-	-	-
ENVG060KSW	60	1350mm	2220mm	1700mm
ENVG100KSW	100	1700mm	2443mm	2000mm
ENVG150KSW	150	1800mm	2543mm	2400mm
ENVG200KSW	200	2070mm	2793mm	2400mm
Direct System	-	-	-	-
ENVD060KSW	60	1350mm	2220mm	1700mm
ENVD100KSW	100	1700mm	2443mm	2000mm
ENVD150KSW	150	1800mm	2543mm	2400mm
ENVD200KSW	200	2070mm	2793mm	2400mm

For our below ground pipe range,
please go to pages 47 & 74-75

Raintrap Rainwater Harvesting



Domestic Rainwater Irrigation System is a below ground rainwater storage tank with internal pump and filter.

- Inexpensive and low maintenance costs
- Automatic rainwater diversion when tank reaches full capacity
- Internal self-cleaning leaf filter

Code	Capacity (Ltrs)	Diameter	Height (to base outlet)
RT2800	2800	1905mm	1565mm
RT3800	3800	2070mm	1795mm
RT4600	4600	2080mm	2035mm

Aquabank Rainwater Harvesting



Simplified rainwater harvesting systems controlled by a pump, suitable for either direct or gravity fed applications.

- Does not require a control panel, display panel or depth sensor
- Minimal energy use in operation
- Cost effective

Code (Gravity System)	Capacity (Ltrs)	Code (Direct System)	Capacity (Ltrs)
AQB012GKSW	1000	AQB012DKSW	1000
AQB028GKSW	2800	AQB028DKSW	2800
AQB038GKSW	3800	AQB038DKSW	3800
AQB046GKSW	4600	AQB046DKSW	4600
AQB060GKSW	6000	AQB060DKSW	6000



We're open from
7.45am to 5pm,
Mon-Fri.



HYDROBRAKES & FLOW CONTROL UNITS

Manage low, moderate and high flows to deliver sustainable drainage from single sites to large networks. Providing large-scale protection at the watercourse level, preventing costly damage and disruption to residents, businesses and essential services. Flow control provides customised water quantity management for surface, foul or combined water across a wide range of flows and for a variety of applications.

Hydro and Vortex Flow Control Units



For the regulation of storm flows in both surface and foul sewers.

- Self-activating with no moving parts to wear or replace
- Precision-engineered to meet site-specific flow, head and storage requirements
- Provides customised water quantity management for surface, foul or combined water

What design information do we need?

- ° The maximum flow rate – Litres per second
- ° The head height – Invert level to top water level
- ° Type of drainage – Storm or Foul water

Various manufacturers & options available:

- ° Flow control units
- ° Hydro brakes
- ° Hydro valves
- ° Hydro valve sliders
- ° Orifice plates
- ° WRC Approved
- ° BBA Certified
- ° ISO 9001

ACCESS CHAMBERS	34,62
AIR BRICKS	80
AIR VENT EXTENSION	79
AIR VENT	79
ALUMINIUM EDGE	23,25
AQUABANK TANK	100
AQUACELL	40-43
AQUACELL ANCILLARIES	43
AQUACELL ECO	41
AQUACELL CORE	42
AQUACELL PLUS	42
AQUACELL PRIME	41
AX-S COVERS	35
BAND SEALS	76
BARRIER FENCING	71
BARRIER PIPE	65
BLOCK PAVING	36-38
BT BOXES	34-35
BT COVERS	58-59
BT DUCT	34-35
BIODISC TANK	92,94
BIOTEC	91
BYPASS SEPARATOR	89
CASTINGS	74-75
CELLCORE HX B	83
CELLCORE HX PLUS	84
CELLCORE HX S	83
CHANNEL DRAINAGE	26-29
COMPOSITE COVERS	61
DAMP PROOF	49
DIFFUSER UNIT	46
DUCT BOX	62
DUCT COVERS	61
DUCTING	50-59
ENVIREAU TANK	99
ERMATIC COVERS	15
EROSION GRID	18
FENCING PINS	71
FLEXSEAL COUPLERS	76
FLOW CONTROL UNITS	103
FORECOURT SEPARATOR	88
FULL RETENTION SEPARATOR	90
GAS BARRIER	49
GAS DUCT	52
GEOCELL	24
GEOGRIDS	18-20
SJL GRID	18
SC INTERGRID	19
TRIAx GRID	20
GEOTEXTILES	16-19
HIGH VIS ORANGE	18
INBITEX GREEN	19
MINI PACKS	17
STANTRACK 1000	17
STANTRACK 609	17
GRATES (IRON)	75
GRATES (STEEL)	74
GREASE SEPARATOR	97
GREASE TRAP	97
GULLY GRATINGS	12-14
C250	13
D400	12,14
GULLY POTS	56
HYDROBRAKES	103
IMPERVIOUS MEMBRANE	48-49
JOINT TAPES	49
JUST DRAIN	47
KEYS	73
LADDERS	32
LAND DRAIN COIL	53
LINE DRAINAGE CHANNEL	26-29
A15 PLASTIC	27
A15 STEEL	28
B125 IRON	28
C250-D400	29
D400-F900	29
SJLDRAIN STEEL	28
SLOT DRAIN PLASTIC	27
MANHOLE COVERS	4-11, 15, 30-35, 60
A15	9-10
B125	8
C250	7
D400	5-6
COMPOSITE COVERS	61
ERMATIC RANGE	15
PPIC COVERS	10
SURFACE BOX COVERS	11
MANHOLE PROTECTORS	73
MARKER PAINTS	72
MARKER TAPES	72
ORANGE BARRIER	71
ORANGE GEOTEXTILE	18
ORIFACE PLATE	103
OSMA	76
PAVING CHANNEL	27-28
PAVING PERMEABLE	38
PAVING STANDARD	37
PAVING TRAYS	31, 34
PERFORATED COIL	52-53
PERFORATED PIPE	51-52
PERMAVOID UNIT	46
PIPE	47, 51-59, 64-66, 77
BARRIER	65
BELOW GROUND	47, 77
BT	58-59
GAS	52
LAND DRAIN	53
TELECOMMUNICATIONS	58-59
TWINWALL	51, 54-57
WATER	66
PLASSON FITTINGS	67-69
PUMPING STATIONS	96
PURITON PIPE	65
RAINWATER HARVESTING	99-100
RITE-EDGE	25
RITE-L-EDGE	23
RITE PAVE	24
ROAD PINS	71
SEPARATORS (BYPASS)	89
SEPARATORS (FORECOURT)	88
SEPARATORS (FULL RETENTION)	90
SEPTIC GAMMA TANK	87
SEPTIC SIGMA TANK	88
SEPTIC SPHERICAL TANK	87
SEWER TREATMENT (BIOTEC)	91
SEWER TREATMENT (BIODISC)	92,94
SEWER TREATMENT (BIOFICIENT)	93,95
SILT TRAP	98
STAKKABOX CHAMBERS	34
STEEL MANHOLE COVERS	30-35
BT COVERS	34
CHEQUER PLATE	33
CUSTOM FABRICATION	32
PAVING TRAYS	31
SEALED & LOCKED TRAYS	32
SOLID TOP	33
STORMWATER CRATE CELLS	40-46
AQUACELL ECO	41
AQUACELL PRIME	41
AQUACELL CORE	42
AQUACELL PLUS	42
AQUACELL COMPONENTS	43
POLYSTORM	44
POLYSTORM LITE	44
POLYSTORM R	45
POLYSTORM XTRA	45
RAINWATER DIFFUSER	46
TAPES	49
TERRAM	16-17
TRAYS (STEEL)	31-32,34
TWINWALL	51-52, 54-57
ACCESSORIES	54-56
BENDS	54-55
BRANCHES	55
COILS	57
COUPLERS	54
PIPES	51-52
REDUCERS	55-56
SEALS	54
VENTS (ACCESSORIES)	79-80
VENTS (TELESCOPIC)	79
VORTEX FLOW UNIT	103
WASHDOWN	98
WATER PIPE	66
WATER PIPE FITTINGS	67-69

Orders and Enquiries

If you have a question, need help choosing a product or need a quote. Feel free to contact our sales office:

Tel 01635524224
 Fax 01635524324
 Email sales@stanleyjohn.com

When ordering, please state product codes and any agreed rates wherever possible. Further information on our product range is available on our website stanleyjohn.com

Delivery & Returns

Deliveries from stock are generally 1-3 working days. Please ensure you have suitable equipment for offloading goods upon delivery. In most cases, we can offer a tail lift or 'self' offload option but this would need to be advised before placing order. Stanley John expects to deliver on time in accordance to any estimates and advisories given but these are provided as a general guideline only and are not guaranteed. In the event of damaged goods, short supply or non-delivery, notification must be made in writing within 3 days of delivery. We reserve the right to make handling, carriage and restocking charges on goods collected or returned that were incorrectly ordered by the customer. Only unused goods in a resaleable condition will be accepted. Any special goods or goods supplied 'direct' may or may not be accepted for restocking and credits (these may or may not be subject to supplier's terms and conditions).

Important notes

- The placing of an order constitutes acceptance of our terms and conditions. A copy is available on request.
- All goods remain property of Stanley John Ltd until full payment is received. In the case of non-payment, we shall be entitled to collect goods wherever possible.
- Stanley John Ltd operates a programme of continuous product development and reserves the right to make changes to product specifications, descriptions and appearances without prior notice.
- All information in the publication is given in good faith and is believed to be correct at time of going to press. No responsibility can be accepted for any errors, omissions or incorrect assumptions.
- It is the responsibility of all users to satisfy themselves that products are suitable for the purpose and application intended.
- Images in this publication are for illustrative purposes only. Appearances, makes and designs may or may not vary at time of ordering

Stanley John Ltd. Unit 89, Third Street East

Greenham Business Park, Newbury, Berkshire RG19 6HW

 01635 524224

 sales@stanleyjohn.com

 stanleyjohn.com

HOW TO FIND US



SJL

Stanley John Ltd. Unit 89, Third Street East
Greenham Business Park, Newbury, Berkshire RG19 6HW

📞 01635 524224

✉️ sales@stanleyjohn.com

🌐 stanleyjohn.com