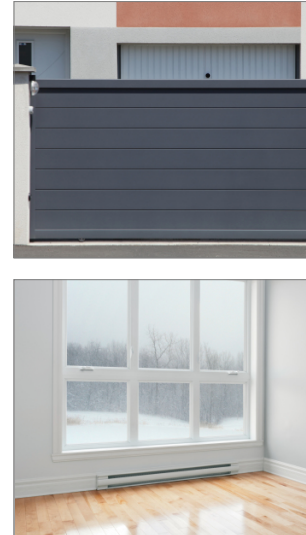


R-KEM II with Threaded Rods for Masonry

Universal polyester (styrene free) resin - European Approval for 15 substrates



Approvals and Reports

- ETA-12/0528
- UKTA-22/6108



Product information

Features and benefits

- Available in a winter version with faster curing time. It can be used from -20°C.
- Three colors - standard, stone & gray
- The most convenient bonded anchor for general purpose use
- Approved for 15 substrates
- Quick, secure and simple installation
- Product with wide spectrum of use in the medium load capacity area
- Ideal for applications where mechanical anchors are not suitable
- Easy dosage thanks to patented self-opening system and use of manual or electric gun
- Option of use standard manual silicone gun
- Suitable for multiple use. Partly used product can be reused after fitting new nozzle

Applications

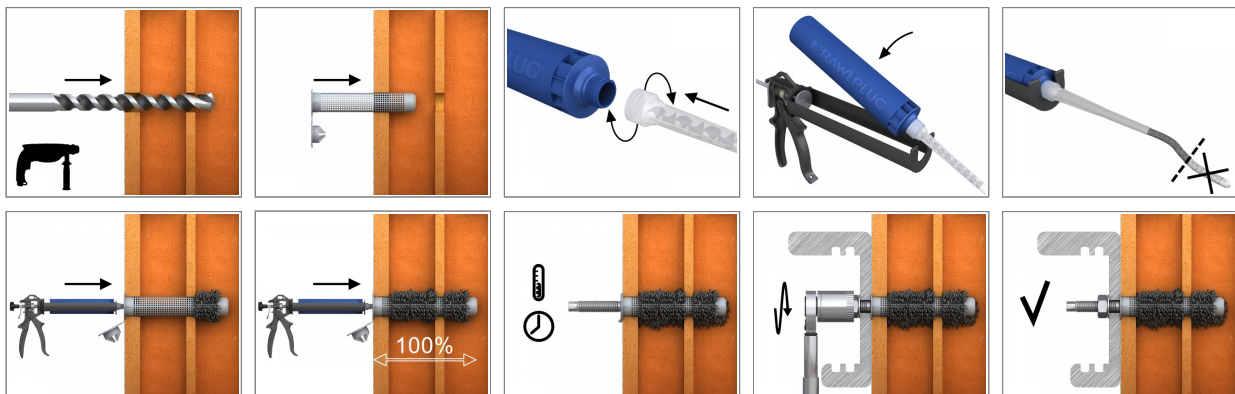
- Gates
- Window elements
- Canopies
- Sanitary appliances
- Railings
- Handrails
- Consoles
- Ladders
- Cable trays

Base materials

Approved for use in:

- Hollow Brick
- Solid Brick
- Hollow Sand-lime Brick
- Solid Sand-lime Brick
- Hollow Lightweight Concrete Block
- Aerated Concrete Block

Installation guide



Product information

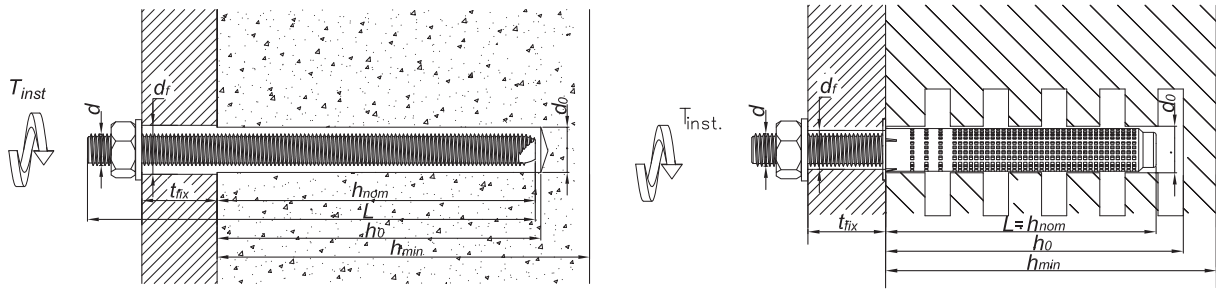
1. Drill hole to the required diameter and depth for stud size being used.
2. Solid substrates: Clean the drill hole thoroughly with brush and hand pump at least four times before installation.
3. Hollow substrates: insert mesh sleeve into the hole.
4. Insert cartridge into gun and attach nozzle.
5. Dispense to waste until even colour is obtained.
6. Solid substrates: Insert the mixer nozzle to the bottom of the drill hole and inject resin, slowly withdrawing the nozzle as the hole is filled to 70% of its depth.
7. Hollow substrates: Insert the mixer nozzle to the bottom of the drill hole and inject resin, slowly withdrawing the nozzle as the hole is filled to 100% of its depth.
8. Immediately insert the stud, slowly and with slight twisting motion. Remove any excess resin around the hole before it sets and leave it undisturbed until the curing time elapses.
9. Attach fixture and tighten the nut to the required torque.

Product Code	Resin	Description / Resin Type	Volume
			[ml]
R-KEM-II-175	R-KEMII	Styrene Free Polyester Resin	175
R-KEM-II-300			300
R-KEM-II-410			410
R-KEM-II-300-W	R-KEMII-W	Low Temperature (Winter) / Rapid Cure Styrene Free Polyester Resin	300
R-KEM-II-300-S	R-KEMII-S	High Temperature (Summer) / Slow Cure Styrene Free Polyester Resin	
R-KEM-II-175-SET	R-KEMII	Set with 4 studs and plastic sleeves	175
R-KEM-II-300-SET			300
R-KEM-II-300-STONE		Stone colour Styrene Free Polyester Resin	410
R-KEM-II-410-STONE			300
R-KEM-II-300-GREY		Grey colour Styrene Free Polyester Resin	410
R-KEM-II-410-GREY			300
R-KEM-II-300-SV		Styrene Free Polyester Resin	300

R-STUDS

Size	Product Code			Anchor		Fixture
	Steel class 5.8	Steel class 8.8	Steel grade A4	Diameter	Length	Hole diameter
				d	L	d _f
				[mm]	[mm]	[mm]
M8	R-STUDS-08110	R-STUDS-08110-88	R-STUDS-08110-A4	8	110	9
	R-STUDS-08160	-	R-STUDS-08160-A4	8	160	9
M10	R-STUDS-10130	R-STUDS-10130-88	R-STUDS-10130-A4	10	130	12
	R-STUDS-10170	-	-	10	170	12
	R-STUDS-10190	-	-	10	190	12
M12	R-STUDS-12160	R-STUDS-12160-88	R-STUDS-12160-A4	12	160	14
	R-STUDS-12190	-	R-STUDS-12190-A4	12	190	14
	R-STUDS-12220	-	-	12	220	14
	R-STUDS-12260	-	-	12	260	14
	R-STUDS-12300	-	R-STUDS-12300-A4	12	300	14
M16	R-STUDS-16190	R-STUDS-16190-88	R-STUDS-16190-A4	16	190	18
	R-STUDS-16220	-	-	16	220	18
	R-STUDS-16260	-	-	16	260	18
	R-STUDS-16300	-	-	16	300	18
	R-STUDS-16380	-	-	16	380	18

Installation data



AERATED CONCRETE

Size			M8	M10	M12	M16
Thread diameter	d	[mm]	8	10	12	16
Hole diameter in substrate	d ₀	[mm]	10	12	14	18
Installation torque	T _{inst}	[Nm]	3	4	6	10
Min. hole depth in substrate	h ₀	[mm]	h _{nom} + 5	h _{nom} + 5	h _{nom} + 5	h _{nom} + 5
Min. installation depth	h _{nom}	[mm]	80	85	95	105
Min. spacing	s _{min}	[mm]	50	50	50	54
Min. edge distance	c _{min}	[mm]	50	50	50	54

CERAMIC SOLID SUBSTRATES

Size			M8	M10	M12	M16
Thread diameter	d	[mm]	8	10	12	16
Hole diameter in substrate	d ₀	[mm]	10	12	14	18
Installation torque	T _{inst}	[Nm]	5	8	10	15
Min. hole depth in substrate	h ₀	[mm]	h _{nom} + 5	h _{nom} + 5	h _{nom} + 5	h _{nom} + 5
Min. installation depth	h _{nom}	[mm]	80	85	95	105
Min. spacing	s _{min}	[mm]	50	50	50	54
Min. edge distance	c _{min}	[mm]	50	50	50	54

HOLLOW SUBSTRATES

Size			M8		M10		M12		M16
Thread diameter	d	[mm]	8	8	10	10	12	12	16
Hole diameter in substrate	d ₀	[mm]	12	12	16	16	16	16	20
Installation torque	T _{inst}	[Nm]	3	3	4	4	6	6	10
Min. hole depth in substrate	h ₀	[mm]	h _{nom} + 5	h _{nom} + 5	h _{nom} + 5	h _{nom} + 5	h _{nom} + 5	h _{nom} + 5	h _{nom} + 5
Min. installation depth	h _{nom}	[mm]	50	80	85	125	85	125	85
Min. spacing	s _{min}	[mm]	100	100	100	100	100	100	120
Min. edge distance	c _{min}	[mm]	100	100	100	100	100	100	120
Plastic mesh sleeve size		[mm]	12x50	12x80	16x85	16x130	16x85	16x130	20x85

Installation data

Minimum working and curing time

R-KEM II

Resin temperature	Concrete temperature	Curing time*	Working time
[°C]	[°C]	[min]	[min]
5	-20	-	-
5	-15	-	-
5	-10	-	-
5	-5	8 h	70
5	0	4 h	45
5	5	2 h	25
10	10	1.5 h	15
15	15	1 h	9
20	20	45	5
25	30	30	2
25	35	-	-
25	40	-	-

**For wet concrete the curing time must be doubled*

R-KEMII-W

Resin temperature	Concrete temperature	Curing time*	Working time
[°C]	[°C]	[min]	[min]
5	-20	24 h	45
5	-15	18 h	30
5	-10	8 h	20
5	-5	5 h	11
5	0	2 h	7
5	5	1 h	5
10	10	45	2
15	15	30	1.5
20	20	15	1
25	30	-	-
25	35	-	-
25	40	-	-

**For wet concrete the curing time must be doubled*

R-KEMII-S

Resin temperature	Concrete temperature	Curing time*	Working time
[°C]	[°C]	[min]	[min]
5	-20	-	-
5	-15	-	-
5	-10	-	-
5	-5	24 h	180
5	0	18 h	120
5	5	12 h	60
10	10	8 h	45
15	15	6 h	25
20	20	4 h	15
25	30	1.5 h	7
25	35	1 h	6
25	40	45	5

**For wet concrete the curing time must be doubled*

Mechanical properties

Size			M8	M10	M12	M16
R-STUDS Metric Threaded Rods - Steel Class 5.8						
Nominal ultimate tensile strength - tension	f_{uk}	[N/mm ²]	500	500	500	500
Nominal yield strength - tension	f_{yk}	[N/mm ²]	400	400	400	400
Cross sectional area - tension	A_s	[mm ²]	37	58	84	157
Elastic section modulus	W_{el}	[mm ³]	31	62	109	278
Characteristic bending resistance	$M^0_{Rk,s}$	[Nm]	19	37	65	166
Design bending resistance	M	[Nm]	15	30	52	133
Allowable bending resistance	M_{rec}	[Nm]	11	21	37	95
R-STUDS Metric Threaded Rods - Steel Class 8.8						
Nominal ultimate tensile strength - tension	f_{uk}	[N/mm ²]	800	800	800	800
Nominal yield strength - tension	f_{yk}	[N/mm ²]	640	640	640	640
Cross sectional area - tension	A_s	[mm ²]	37	58	84	157
Elastic section modulus	W_{el}	[mm ³]	31	62	109	278
Characteristic bending resistance	$M^0_{Rk,s}$	[Nm]	30	60	105	266
Design bending resistance	M	[Nm]	24	48	84	213
Allowable bending resistance	M_{rec}	[Nm]	17	34	60	152
R-STUDS Metric Threaded Rods - Steel Class A4						
Nominal ultimate tensile strength - tension	f_{uk}	[N/mm ²]	700	700	700	700
Nominal yield strength - tension	f_{yk}	[N/mm ²]	350	350	350	350
Cross sectional area - tension	A_s	[mm ²]	37	58	84	157
Elastic section modulus	W_{el}	[mm ³]	31	62	109	278
Characteristic bending resistance	$M^0_{Rk,s}$	[Nm]	26	52	92	233
Design bending resistance	M	[Nm]	17	34	59	149
Allowable bending resistance	M_{rec}	[Nm]	12	24	42	107

Basic performance data

R-STUDS LIGHT

Performance data for single anchor without influence of edge distance and spacing

Size		M8	M10	M12	M16			
Substrate type	-	Hollow substrates						
Plastic mesh sleeve size	[mm]	12x50	12x80	16x85	16x130	16x85	16x130	20x85
MEAN ULTIMATE LOAD								
TENSION AND SHEAR LOAD $F_{R,u,m}$								
Silicate hollow block min 12MPa (eg KS Ratio Block 8 DF)	[kN]	3.42	3.50	3.73	5.11	4.16	4.48	4.24
Perforated ceramic blocks min 12MPa (eg Proton Hz 12/0.9 DF)	[kN]	3.21	3.54	3.87	4.03	3.97	4.16	3.69
Perforated ceramic blocks min 15MPa (eg Wienerberger Porotherm)	[kN]	2.04	2.84	3.07	3.68	3.74	3.99	3.51
Perforated ceramic blocks min 10MPa (eg Leiter Thermopor)	[kN]	2.08	2.98	3.19	3.78	3.68	4.03	3.77
Perforated ceramic blocks min 15MPa (eg MEGA MAX)	[kN]	2.86	3.43	3.74	3.59	3.71	3.94	3.80
Perforated ceramic blocks min 6.0MPa (eg LS Tableau Mono Rect)	[kN]	1.24	1.25	2.49	2.74	2.82	2.78	2.14
Perforated ceramic blocks min 6.0MPa (eg LS Tableau Rect)	[kN]	1.73	1.60	2.37	2.51	2.41	2.68	2.10
Perforated ceramic blocks min 6.0MPa (eg LS Monomur)	[kN]	1.30	1.39	1.99	2.06	2.05	2.12	2.05
Perforated ceramic blocks min 6MPa (eg SM BGV Thermo)	[kN]	1.45	1.45	2.22	2.17	2.19	2.24	2.25
Perforated ceramic blocks min 6.0MPa (eg SM BGV Thermo Plus)	[kN]	1.51	1.60	1.39	1.45	1.86	2.07	1.75
Lightweight concrete hollow block min 2.0MPa	[kN]	1.73	2.38	3.52	3.00	3.93	3.75	3.92
CHARACTERISTIC LOAD								
TENSION AND SHEAR LOAD $F_{R,k}$								
Silicate hollow block min 12MPa (eg KS Ratio Block 8 DF)	[kN]	2.50	2.50	2.50	3.50	3.00	3.00	3.00
Perforated ceramic blocks min 12MPa (eg Proton Hz 12/0.9 DF)	[kN]	2.00	2.50	2.50	2.50	2.50	2.50	2.50
Perforated ceramic blocks min 15MPa (eg Wienerberger Porotherm)	[kN]	1.50	2.00	2.00	2.50	2.50	2.50	2.50
Perforated ceramic blocks min 10MPa (eg Leiter Thermopor)	[kN]	1.50	2.00	2.00	2.50	2.50	2.50	2.50
Perforated ceramic blocks min 15MPa (eg MEGA MAX)	[kN]	2.00	2.50	2.50	2.50	2.50	2.50	2.50
Perforated ceramic blocks min 6.0MPa (eg LS Tableau Mono Rect)	[kN]	0.90	0.90	1.50	2.00	2.00	2.00	1.20
Perforated ceramic blocks min 6.0MPa (eg LS Tableau Rect)	[kN]	0.90	1.20	1.50	1.50	1.50	2.00	1.50
Perforated ceramic blocks min 6.0MPa (eg LS Monomur)	[kN]	0.90	0.90	1.20	1.50	1.50	1.50	1.50
Perforated ceramic blocks min 6MPa (eg SM BGV Thermo)	[kN]	0.90	0.90	1.50	1.50	1.50	1.50	1.50
Perforated ceramic blocks min 6.0MPa (eg SM BGV Thermo Plus)	[kN]	0.90	1.20	0.90	0.90	1.20	1.50	1.20
Lightweight concrete hollow block min 2.0MPa	[kN]	1.20	1.50	2.50	2.00	2.50	2.50	2.50

Basic performance data

Size		M8		M10		M12		M16
DESIGN LOAD								
TENSION AND SHEAR LOAD F_{Rd}								
Silicate hollow block min 12MPa (eg KS Ratio Block 8 DF)	[kN]	1.00	1.00	1.00	1.40	1.20	1.20	1.20
Perforated ceramic blocks min 12MPa (eg Proton Hz 12/0.9 DF)	[kN]	0.88	1.00	1.20	1.40	1.40	1.60	1.60
Perforated ceramic blocks min 15MPa (eg Wienerberger Porotherm)	[kN]	0.60	0.80	1.00	1.00	1.40	1.40	1.00
Perforated ceramic blocks min 10MPa (eg Leiter Thermopor)	[kN]	0.60	0.80	0.80	1.00	1.00	1.40	1.20
Perforated ceramic blocks min 15MPa (eg MEGA MAX)	[kN]	0.80	1.00	1.40	1.40	1.60	1.60	1.60
Perforated ceramic blocks min 6.0MPa (eg LS Tableau Mono Rect)	[kN]	0.36	0.36	0.80	0.80	0.80	0.80	0.60
Perforated ceramic blocks min 6.0MPa (eg LS Tableau Rect)	[kN]	0.48	0.48	0.60	0.60	0.80	0.80	0.60
Perforated ceramic blocks min 6.0MPa (eg LS Monomur)	[kN]	0.36	0.36	0.60	0.60	0.60	0.60	0.60
Perforated ceramic blocks min 6MPa (eg SM BGV Thermo)	[kN]	0.36	0.36	0.60	0.60	0.60	0.60	0.60
Perforated ceramic blocks min 6.0MPa (eg SM BGV Thermo Plus)	[kN]	0.48	0.48	0.48	0.48	0.48	0.60	0.48
Lightweight concrete hollow block min 2.0MPa	[kN]	0.48	0.60	1.00	1.00	1.00	1.40	1.40
RECOMMENDED LOAD								
TENSION AND SHEAR LOAD F_{rec}								
Silicate hollow block min 12MPa (eg KS Ratio Block 8 DF)	[kN]	0.71	0.71	0.71	1.00	0.86	0.86	0.86
Perforated ceramic blocks min 12MPa (eg Proton Hz 12/0.9 DF)	[kN]	0.63	0.71	0.86	1.00	1.00	1.14	1.14
Perforated ceramic blocks min 15MPa (eg Wienerberger Porotherm)	[kN]	0.43	0.57	0.71	0.71	1.00	1.00	0.71
Perforated ceramic blocks min 10MPa (eg Leiter Thermopor)	[kN]	0.43	0.57	0.57	0.71	0.71	1.00	0.86
Perforated ceramic blocks min 15MPa (eg MEGA MAX)	[kN]	0.57	0.71	1.00	1.00	1.14	1.14	1.14
Perforated ceramic blocks min 6.0MPa (eg LS Tableau Mono Rect)	[kN]	0.26	0.26	0.57	0.57	0.57	0.57	0.43
Perforated ceramic blocks min 6.0MPa (eg LS Tableau Rect)	[kN]	0.34	0.34	0.43	0.43	0.57	0.57	0.43
Perforated ceramic blocks min 6.0MPa (eg LS Monomur)	[kN]	0.26	0.26	0.43	0.43	0.43	0.43	0.43
Perforated ceramic blocks min 6MPa (eg SM BGV Thermo)	[kN]	0.26	0.26	0.43	0.43	0.43	0.43	0.43
Perforated ceramic blocks min 6.0MPa (eg SM BGV Thermo Plus)	[kN]	0.34	0.34	0.34	0.34	0.34	0.43	0.34
Lightweight concrete hollow block min 2.0MPa	[kN]	0.34	0.43	0.71	0.71	0.71	1.00	1.00

Basic performance data

R-STUDS LIGHT

Performance data for single anchor without influence of edge distance and spacing

Size		M8	M10	M12	M16
Substrate type	-	Solid substrates			
Plastic mesh sleeve size	-	-	-	-	-
MEAN ULTIMATE LOAD					
TENSION LOAD $N_{Ru,m}$					
Solid clay brick min 20MPa (eg Mz20/2.0)	[kN]	8.78	10.9	11.3	11.5
Autoclaved aerated concrete block min 6.0MPa (AAC7)	[kN]	2.65	3.24	4.11	4.68
Solid silicate brick min 20MPa (eg KS NF 20/2.0)	[kN]	7.54	8.00	8.30	8.50
SHEAR LOAD $V_{Ru,m}$					
Solid clay brick min 20MPa (eg Mz20/2.0)	[kN]	5.79	8.35	11.6	11.5
Autoclaved aerated concrete block min 6.0MPa (AAC7)	[kN]	2.43	3.41	4.36	4.48
Solid silicate brick min 20MPa (eg KS NF 20/2.0)	[kN]	5.86	8.11	7.91	8.23
CHARACTERISTIC LOAD					
TENSION LOAD N_{Rk}					
Solid clay brick min 20MPa (eg Mz20/2.0)	[kN]	6.00	7.00	7.00	7.00
Autoclaved aerated concrete block min 6.0MPa (AAC7)	[kN]	1.50	2.00	2.50	3.00
Solid silicate brick min 20MPa (eg KS NF 20/2.0)	[kN]	5.00	5.00	5.00	5.00
SHEAR LOAD V_{Rk}					
Solid clay brick min 20MPa (eg Mz20/2.0)	[kN]	3.50	5.00	7.00	7.00
Autoclaved aerated concrete block min 6.0MPa (AAC7)	[kN]	1.50	2.00	2.50	2.50
Solid silicate brick min 20MPa (eg KS NF 20/2.0)	[kN]	3.50	5.00	5.00	5.00
DESIGN LOAD					
TENSION LOAD N_{Rd}					
Solid clay brick min 20MPa (eg Mz20/2.0)	[kN]	2.40	2.80	2.80	2.80
Autoclaved aerated concrete block min 6.0MPa (AAC7)	[kN]	0.75	1.00	1.25	1.50
Solid silicate brick min 20MPa (eg KS NF 20/2.0)	[kN]	2.00	2.00	2.00	2.00
SHEAR LOAD V_{Rd}					
Solid clay brick min 20MPa (eg Mz20/2.0)	[kN]	1.40	2.00	2.80	2.80
Autoclaved aerated concrete block min 6.0MPa (AAC7)	[kN]	0.75	1.00	1.25	1.25
Solid silicate brick min 20MPa (eg KS NF 20/2.0)	[kN]	1.40	2.00	2.00	2.00
RECOMMENDED LOAD					
TENSION LOAD N_{rec}					
Solid clay brick min 20MPa (eg Mz20/2.0)	[kN]	1.71	2.00	2.00	2.00
Autoclaved aerated concrete block min 6.0MPa (AAC7)	[kN]	0.54	0.71	0.89	1.07
Solid silicate brick min 20MPa (eg KS NF 20/2.0)	[kN]	1.43	1.43	1.43	1.43
SHEAR LOAD V_{rec}					
Solid clay brick min 20MPa (eg Mz20/2.0)	[kN]	1.00	1.43	2.00	2.00
Autoclaved aerated concrete block min 6.0MPa (AAC7)	[kN]	0.54	0.71	0.89	0.89
Solid silicate brick min 20MPa (eg KS NF 20/2.0)	[kN]	1.00	1.43	1.43	1.43

Product commercial data

Product Code	Volume [ml]	Quantity [pcs]			Weight [kg]			Bar Codes
		Box	Outer	Pallet	Box	Outer	Pallet	
R-KEM-II-175 ¹⁾	175	10	10	840	3.8	3.8	348.1	5906675050249
R-KEM-II-300 ¹⁾	300	10	10	840	5.9	5.9	529.0	5906675050256
R-KEM-II-410 ¹⁾	410	10	10	560	8.4	8.4	498.7	5906675408163
R-KEM-II-300-W ¹⁾	300	10	10	840	5.8	5.8	516.4	5906675064666
R-KEM-II-300-S ¹⁾	300	10	50	600	6.0	30.0	390.0	5906675064642
R-KEM-II-175-SET ¹⁾	175	5	5	525	3.0	3.0	348.3	5906675057866
R-KEM-II-300-SET ¹⁾	300	5	5	320	4.9	4.9	345.9	5906675057859
R-KEM-II-300-STONE ₁₎	300	10	10	840	6.0	6.0	534.0	5906675038124
R-KEM-II-410-STONE ₁₎	410	10	10	560	8.4	8.4	498.7	5906675424958
R-KEM-II-300-GREY ₁₎	300	10	10	840	6.0	6.0	534.0	5906675038131
R-KEM-II-410-GREY ₁₎	410	10	10	560	8.4	8.4	498.7	5906675424941
R-KEM-II-300-SV ¹⁾	300	10	10	840	5.9	5.9	529.0	5906675417073

1) ETA-12/0528