

ENVIROTECT™

Envirotect XT 150 Refl  t spunbond non-woven polypropylene construction membrane with a high purity aluminium surface. It has been designed and developed for use in timberframe, light steel gauge, modular building and leisure building applications. Envirotect XT 150 Refl  t delivers first line protection to the external of the building during construction against driving rain, and wind-blown snow providing ultimate protection to the exterior of the building. The high-water vapour permeability provided from Envirotect XT 150 Refl  t ensures water vapour can pass through the structure safely into a cavity. The ultra-low emissivity surface enhances the thermal performance of the airspace significantly improving the overall thermal performance of the wall construction when facing a still air cavity.

Developed and manufactured by Permavent using the latest technologically advanced methods available Envirotect XT 150 Refl  t assures a high specification, class leading product solution.

XT 150 REFLECT WALLING MEMBRANE



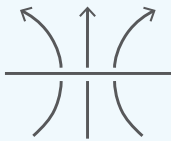
Thermal resistance,
m²K/W



Water vapour
resistance



UV and heat resistant



High vapour
permeability

STA | STRUCTURAL
TIMBER
ASSOCIATION
Member

UK
CA

CE

Thermal resistance R, m ² K/W	0.79*
Resistance to water penetration, Class	W2
Water vapour transmission properties (sd), m	0.09
Nail tear resistance to EN12310-1 (MD), N/50mm	220
Nail tear resistance to EN12310-1 (CD), N/50mm	230
Tensile strength to EN12311-1 (MD), N/50mm	240
Tensile strength to EN12311-1 (CD), N/50mm	190
Flexibility at low temperature to EN1109:2013	-40°C
Weight, gsm	150
Emissivity	0.02

*when facing >20mm still airspace.

Independently tested.
Exceeds BS5250, BMTRADA & NHBC requirements for vapour permeability.

1.5x50m
12kg

PERMAVENT

For installation guides on all our products, please visit our website PERMAVENT.CO.UK

A: 11 Cumberland Drive, Granby Industrial Estate, Weymouth, Dorset, DT4 9TB T: +44 (0) 1305 766 703 E: enquiries@permavent.co.uk



5 060747 290985

FITTING INSTRUCTIONS

XT 150 REFLECT WALLING MEMBRANE

Unroll Envirotect XT 150 Reflect and secure directly to the sheathing or insulation using stainless steel staples and in accordance with NHBC.

Envirotect XT 150 Reflect should be secured at no more than 600mm horizontally and 500mm vertically fixing centres. A maximum fixing centre of 200mm should be adopted around any openings (Figure 1).

All laps around windows or door openings should be sealed using Permavent high tack sealing tape. Vertically the membrane should overlap by at least 150mm and with the joints in a staggered pattern. Envirotect XT 150 Reflect should be installed with a least a 100mm lap horizontally starting at the bottom of the panel working up to ensure the upper layer covers the lower layer, to protect the substrate from water runoff (Figure 2).

Envirotect XT 150 Reflect should be covered as soon as practically possible and dependent on the build type and installation time.

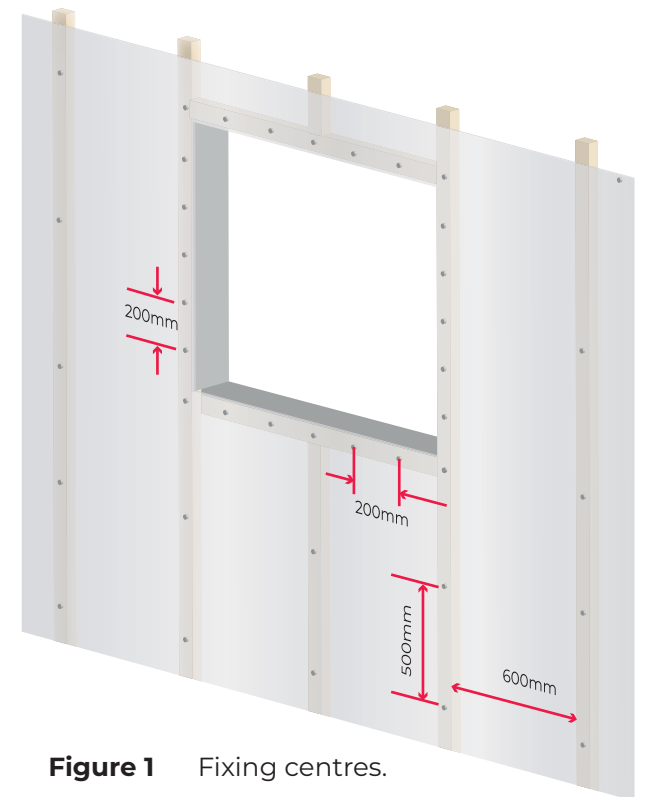


Figure 1 Fixing centres.

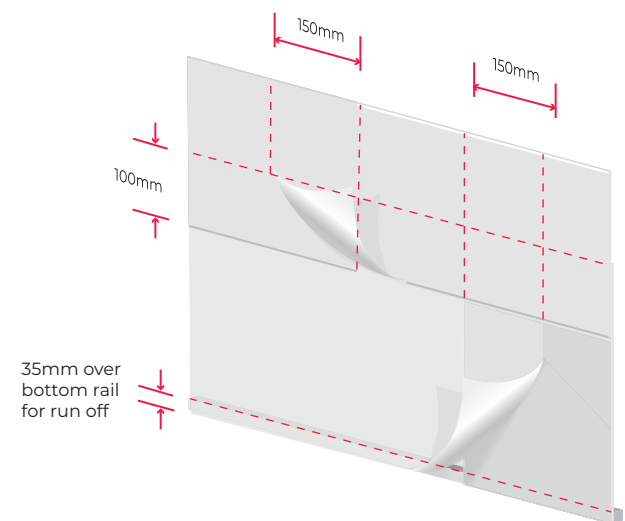
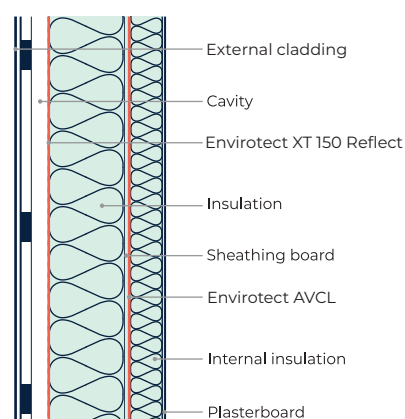


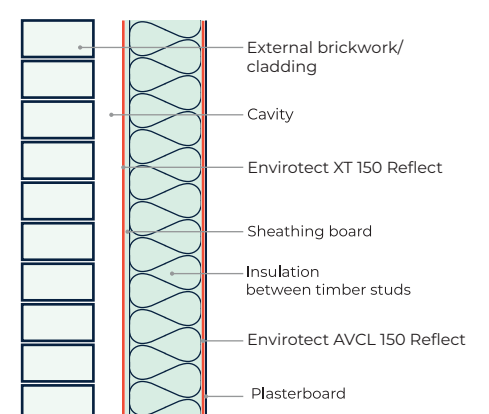
Figure 2 Vertical & horizontal laps.

Envirotect XT 150 Reflect Applications:

▼ Cladding



▼ Timberframe



The information contained within the installation advice document provided by Permavent Limited is for general information and provided as guidance only. Permavent provide no warranty and accept no liability for the information contained within this document which is published in good faith. The suitability of the product is the responsibility of the installer / specifier. Permavent Limited advise following the installation guidelines and the relevant codes of practice which were correct at the time of publishing. Permavent Limited reserve the right to alter product specifications without prior notice, in line with company policy of continuous development and improvement.

ENVIROTECT™