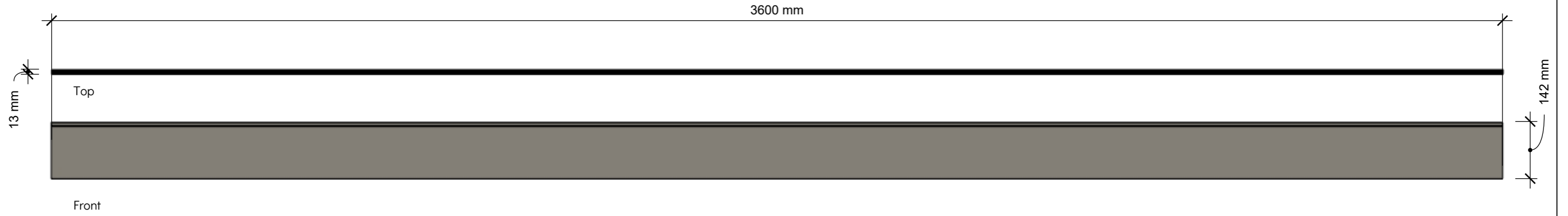
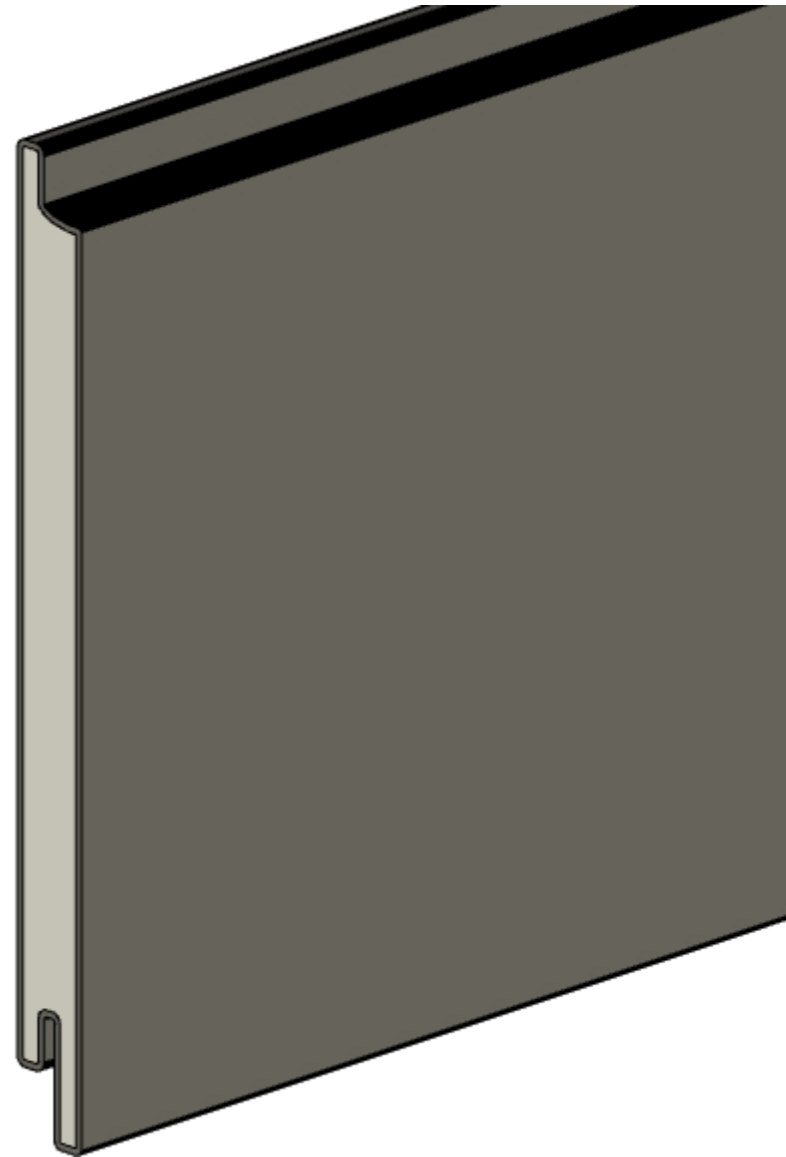


Do not scale from this drawing.
 The Contractor shall be responsible for checking dimensions, tolerances & references.
 Discrepancies to be verified with Ecoscape UK before commencement of works.



Scale 1:10



Ecoscape Forma Composite Cladding Board

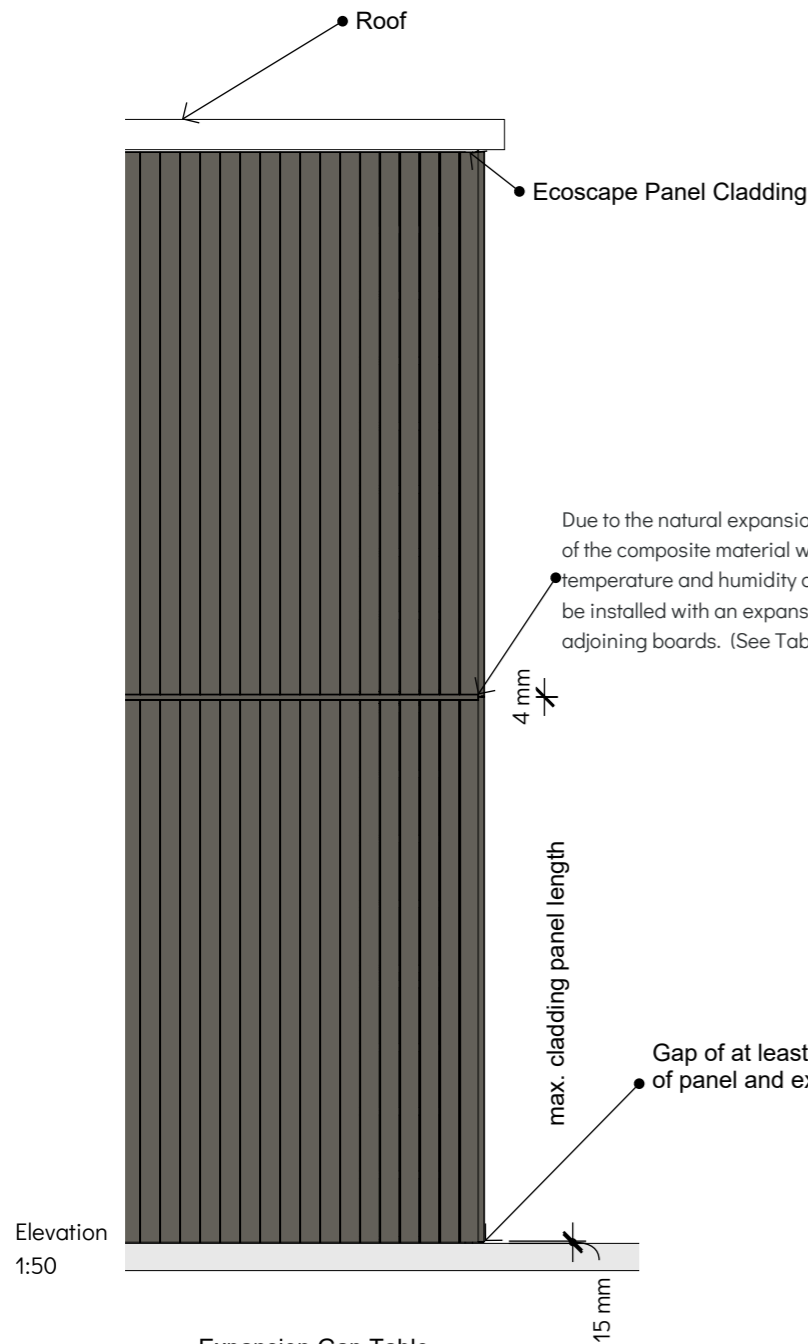
Material: 2nd Generation Wood Plastic Composite with durable co-extrusion capping
 Finish: Brushed Finish

Product Variants:

	Midnight	Argent	Flint	Havana	Silver Birch	Spiced Oak
3600mm	ECO3600AR	ECO3600AR	ECO3600FL	ECO3600HA	ECO3600SB	ECO3600SO

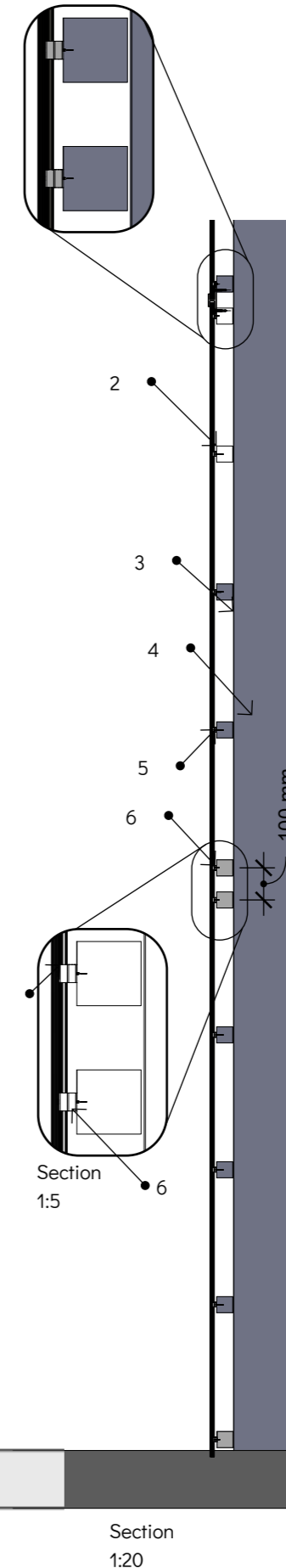
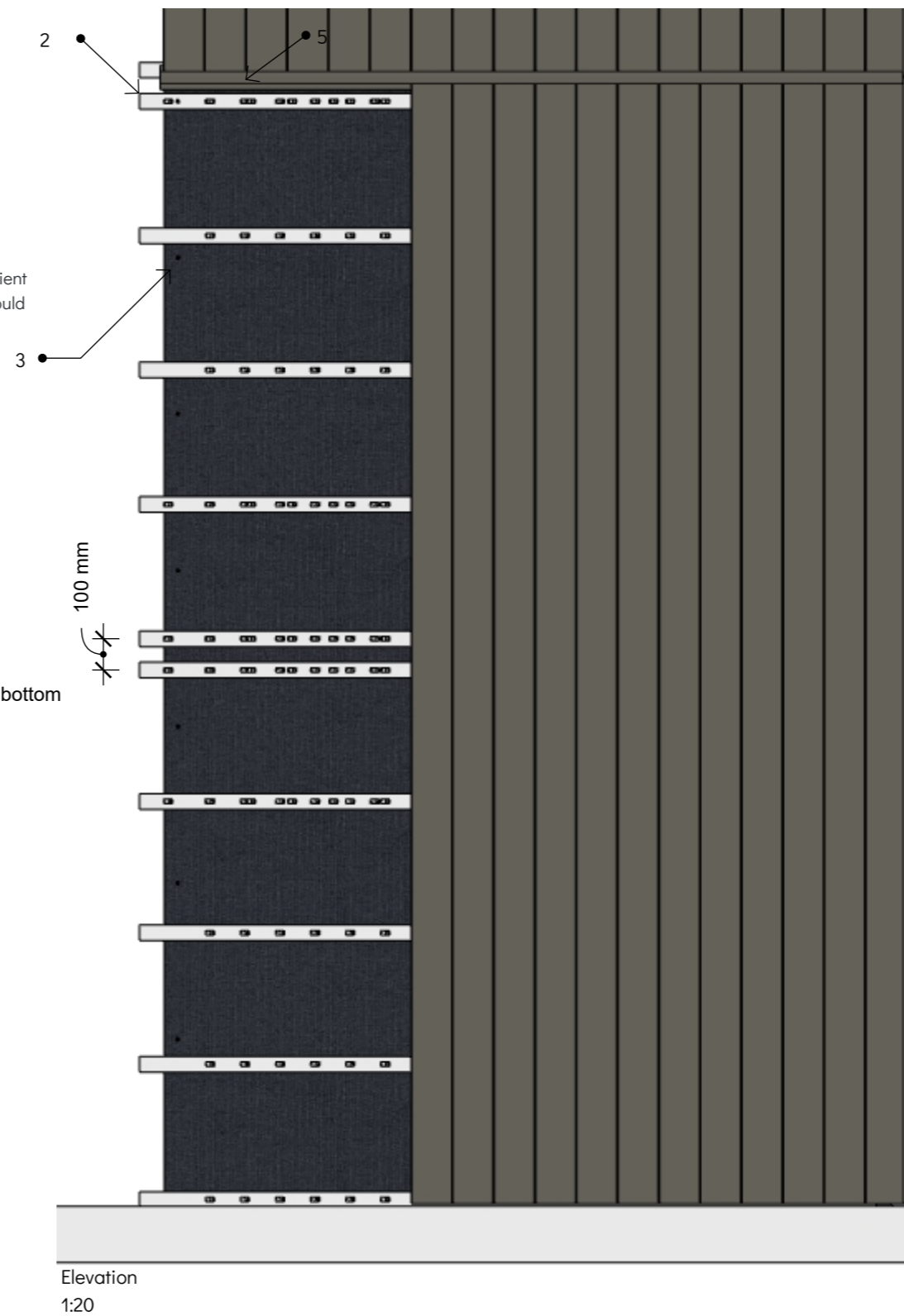
© 2024 Ecoscape UK Ltd

Panel Cladding Vertical Orientation Typical Detail



Expansion Gap Table

		Length (Meters)										
		1	2.44	2.8	3	3.66	3.9	4	4.88	5.4		
Installation Temperature (°C)	-10	2.4	5.9	6.7	7.2	8.8	9.4	9.6	11.7	13.0	Gap (mm)	
	-5	2.2	5.4	6.2	6.6	8.1	8.6	8.8	10.7	11.9		
	0	2.0	4.9	5.6	6.0	7.3	7.8	8.0	9.8	10.8		
	5	1.8	4.4	5.0	5.4	6.6	7.0	7.2	8.8	9.7		
	10	1.6	3.9	4.5	4.8	5.9	6.2	6.4	7.8	8.6		
	15	1.4	3.4	3.9	4.2	5.1	5.5	5.6	6.8	7.6		
	20	1.2	2.9	3.4	3.6	4.4	4.7	4.8	5.9	6.5		
	25	1.0	2.4	2.8	3.0	3.7	3.9	4.0	4.9	5.4		
	30	0.8	2.0	2.2	2.4	2.9	3.1	3.2	3.9	4.3		
35	0.6	1.5	1.7	1.8	2.2	2.3	2.4	2.9	3.2			
40	0.4	1.0	1.1	1.2	1.5	1.6	1.6	2.0	2.2			



1: Ecoscape Panel Cladding Board (3600mm x 21 x 151mm)
Available Colours: Spiced Oak; Silver Birch; Midnight

2: Substructure: - Cladding can be fixed to solid plastic, pressure treated softwood timber (in accordance with BS8417), or Aluminium joists depending on design requirements. Both solid plastic joists and aluminium joists can be purchased from Ecoscape.
- Joists should be fixed into position at 500mm centres using suitable A4 stainless steel countersunk wood/ masonry screws or good quality exterior screws. All joists need to be fixed in a minimum of 3 places.
- All joists need to be minimum 19mm thick, flat and leveled against the wall. Use shims as required.

3: Vapour Barrier: Prior to installation, a building professional should be consulted regarding vapor barriers and insulation for your project. Where a vapor barrier is to be used, it should be a breathable type and must be positioned behind the joists to allow the cladding a minimum 25mm airflow. It is essential that a barrier/ coating is installed to prevent water penetration.

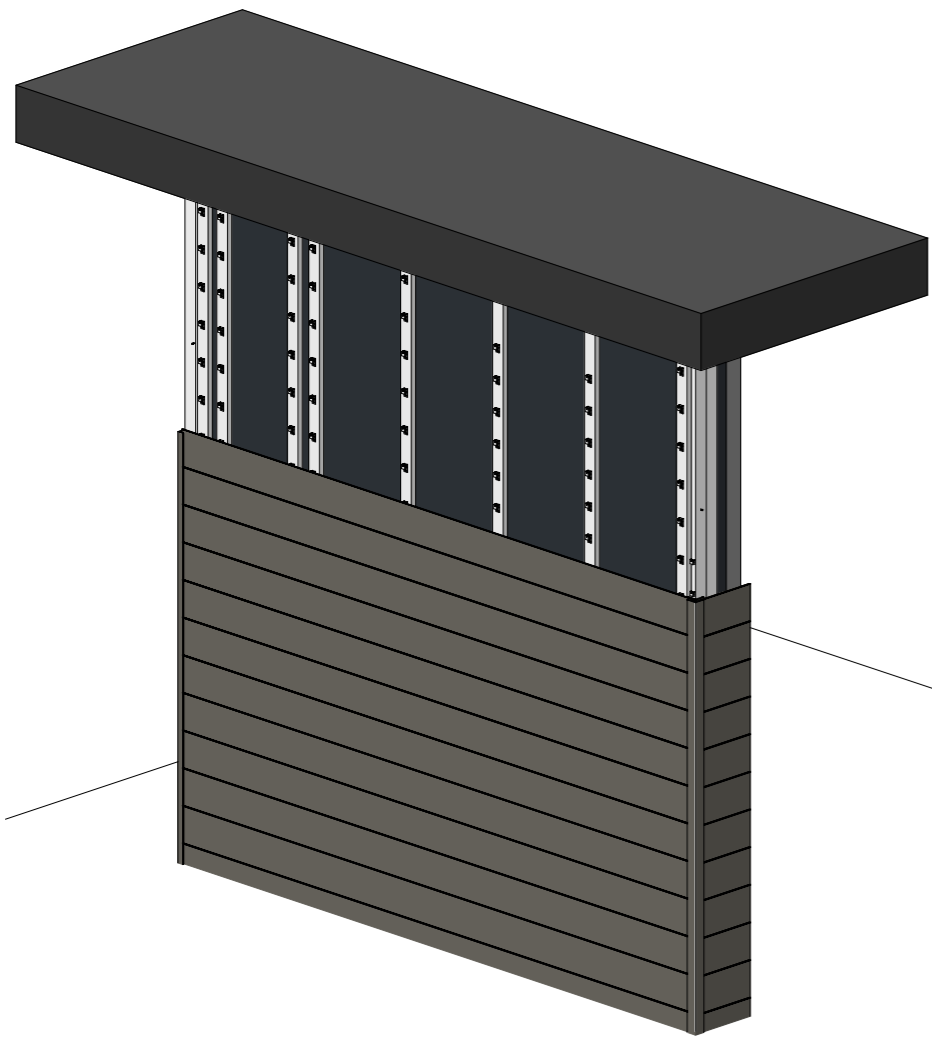
4: Building Structure

5: Joint Trim

6: Cladding Clips - Cladding clips should be fixed back to the joists using 'Wood screws for

7: Locking Screw - Locking screw - For 2no. cladding clips per board (placed no more than 100mm apart and usually placed centrally) an additional screw is required through front of cladding clip, and pre-drilled tongue of cladding board - to support the cladding board vertically.

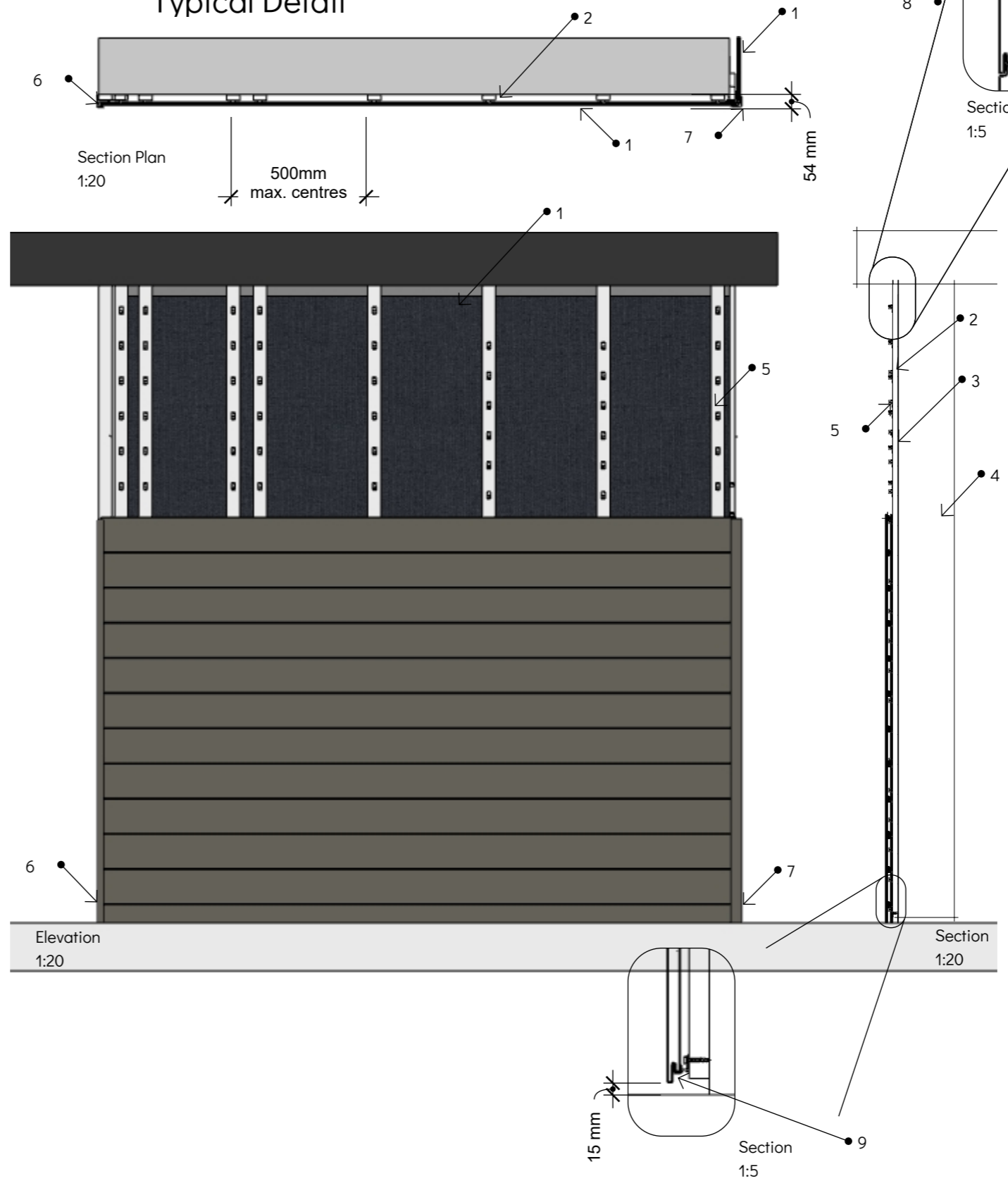
Panel Cladding Horizontal Orientation Typical Detail



Iso View showing Panel Cladding with Horizontal cladding (some boards removed to show substructure below)
1:50

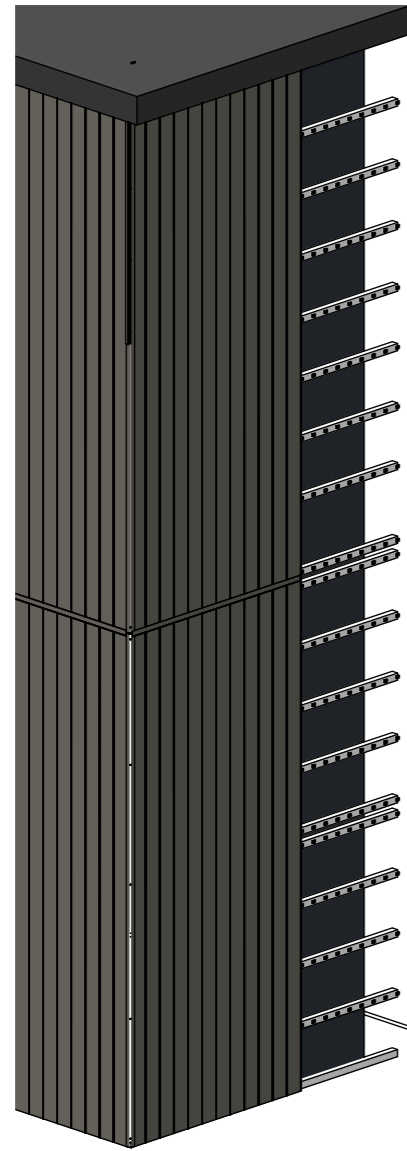
Expansion Gap Table

		Length (Meters)										
		1	2.44	2.8	3	3.66	3.9	4	4.88	5.4		
Installation Temperature (°C)	-10	2.4	5.9	6.7	7.2	8.8	9.4	9.6	11.7	13.0	Gap (mm)	
	-5	2.2	5.4	6.2	6.6	8.1	8.6	8.8	10.7	11.9		
	0	2.0	4.9	5.6	6.0	7.3	7.8	8.0	9.8	10.8		
	5	1.8	4.4	5.0	5.4	6.6	7.0	7.2	8.8	9.7		
	10	1.6	3.9	4.5	4.8	5.9	6.2	6.4	7.8	8.6		
	15	1.4	3.4	3.9	4.2	5.1	5.5	5.6	6.8	7.6		
	20	1.2	2.9	3.4	3.6	4.4	4.7	4.8	5.9	6.5		
	25	1.0	2.4	2.8	3.0	3.7	3.9	4.0	4.9	5.4		
	30	0.8	2.0	2.2	2.4	2.9	3.1	3.2	3.9	4.3		
	35	0.6	1.5	1.7	1.8	2.2	2.3	2.4	2.9	3.2		
40	0.4	1.0	1.1	1.2	1.5	1.6	1.6	2.0	2.2			

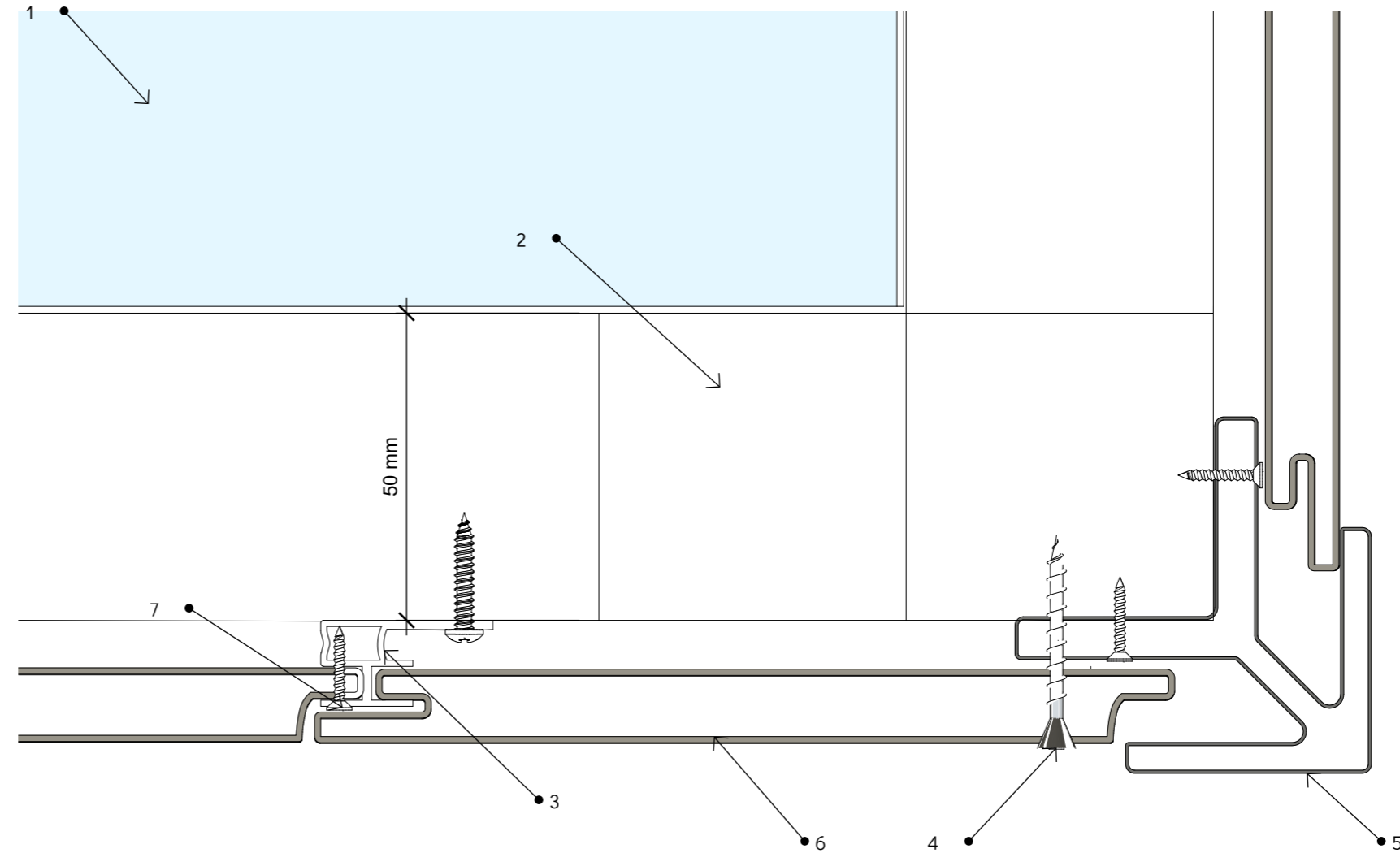


- 1: Ecoscape Panel Cladding Board (3600mm x 21 x 151mm)
Available Colours: Spiced Oak; Silver Birch; Midnight
- 2: Substructure: - Cladding can be fixed to Ecoscape solid plastic joists, or pressure treated softwood timber* (in accordance with BS8417), or Aluminium joists depending on design requirements.
- Joists should be fixed into position at 500mm centres using suitable A4 stainless steel countersunk wood/ masonry screws or good quality exterior screws. All joists need to be fixed in a minimum of 3 places.
- All joists need to be minimum 19mm thick, flat and leveled against the wall. Use shims as required.
- 3: Vapour Barrier: Prior to installation, a building professional should be consulted regarding vapor barriers and insulation for your project. Where a vapor barrier is to be used, it should be a breathable type and must be positioned behind the joists to allow the cladding a minimum 25mm airflow. It is essential that a barrier/ coating is installed to prevent water penetration.
- 4: Building Structure
- 5: Cladding Clips - The centre of each cladding board should be supported by double joists - spaced at 50mm apart - which should be fixed with 2no. colour-coded screws -fixed through the recess into pre-drilled and countersunk holes.
- 6: F-Shaped End Trim - to be fixed back to joist with good quality exterior screw. Cladding to be fixed to trim using Ecoscape Colour-coded screws (into recess), ensuring cladding is pre-drilled and countersunk.
- 7: External Corner Trim - to be fixed back to joist with good quality exterior screw. Cladding to be fixed to trim using Ecoscape Colour-coded screws (into recess), ensuring cladding is pre-drilled and countersunk.
- 8: Plastic Pad - Where end trims are not used, the uppermost cladding board may be secured using a plastic pad and colour coded screw (pre-drilled and countersunk) through each joist)
- 9: Starter Bar - when cladding is installed in horizontal orientation - starter bar should be used in place of cladding clips for mounting the lowermost cladding board, ensuring a gap of 15mm between bottom of cladding and the floor, to avoid excessive moisture absorption.

Panel Cladding Corner Trim Typical Fixing Detail



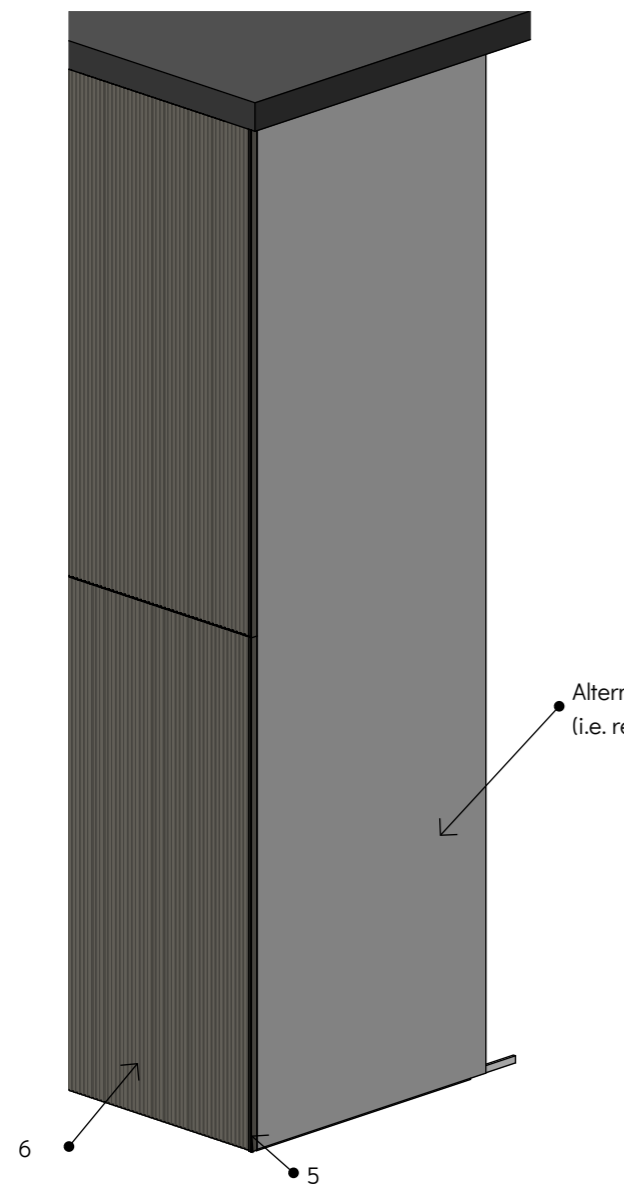
Iso: Cladding Corner Detail - shown with some cladding boards removed to show joist substructure below
1:50



Section Plan - including External Corner Trim
1:1

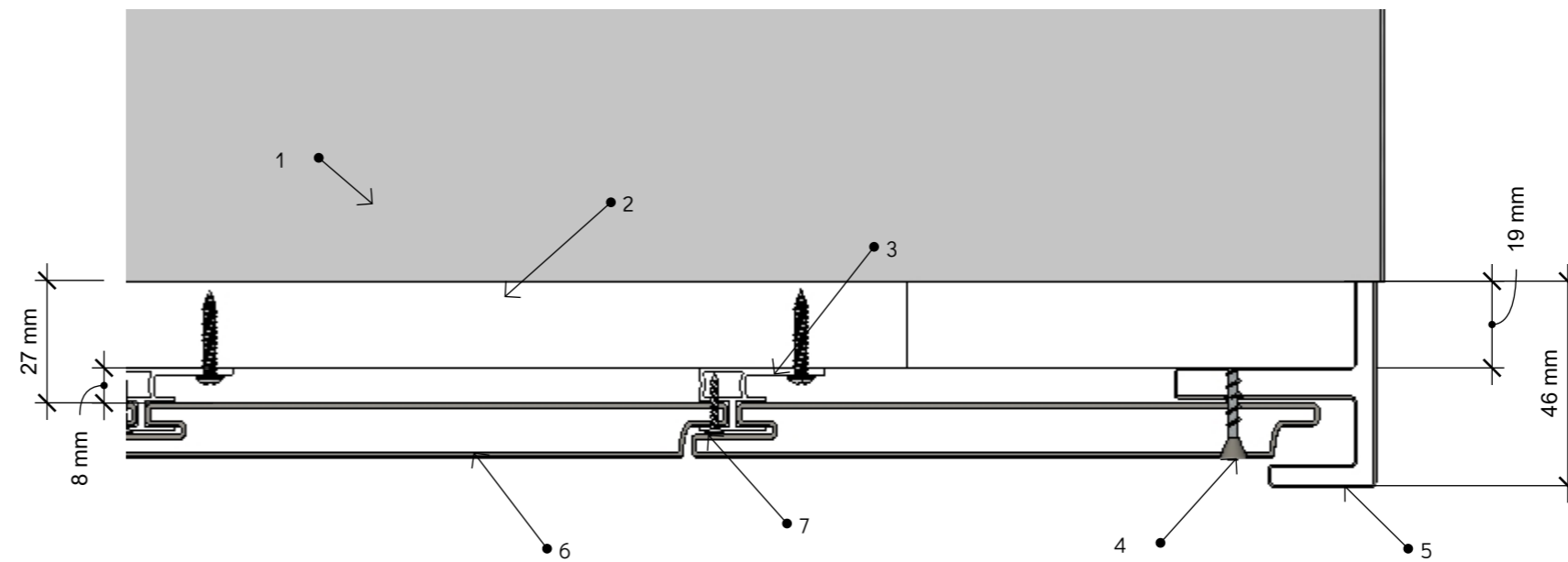
- 1: Building Wall Structure
- 2: Joists - Double joist detail required at wall corners - to allow cladding board. 50 x 50mm timber joist shown (N.B. Where using timber joists, it is recommended that the joists are protected using EcoTape decking and cladding substructure protection tape), applied to any adjacent surface directly adjacent to masonry, and to front and top face of timber cladding substructure)
- 3: Cladding Clips - 1 per joist - fixed to joist using 'Wood Screws for Cladding'
- 4: Colour-coded screw - to the adjacent first cladding board. (Ensure all holes are pre-drilled and countersunk)
- 5: Ecoscape Panel External Corner Trim
- 6: Ecoscape Panel Cladding Board
- 7: Locking screw - For 2no. adjacent cladding clips per board (placed no more than 100mm apart and usually placed centrally) an additional screw is required through front of cladding clip, and pre-drilled tongue of cladding board - to support the cladding board vertically.

Panel Cladding End Trim Typical Fixing Detail



Iso: Cladding Corner Detail - showing interface of vertical Panel cladding with a render or brick wall finish
1:50

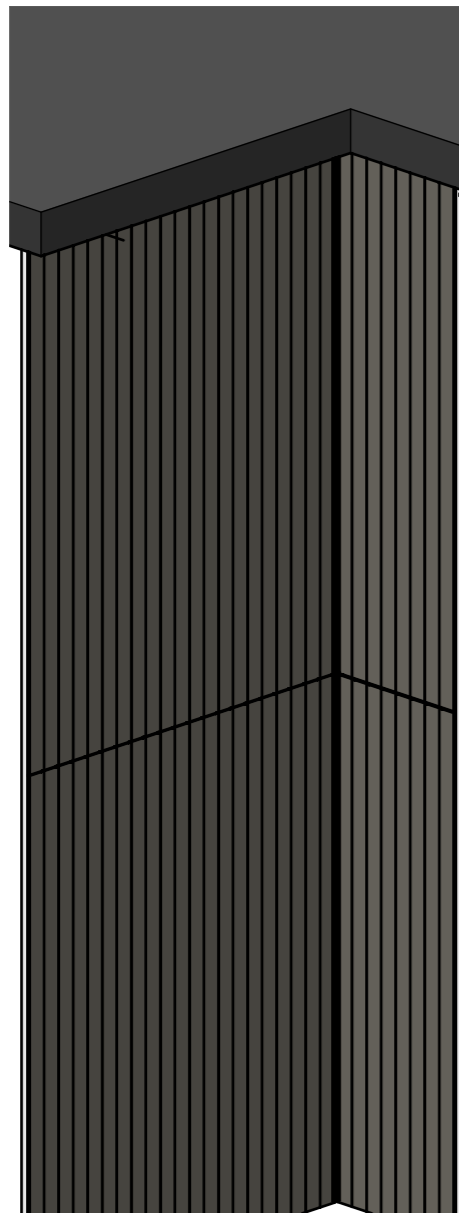
Alternate wall finish
(i.e. render, brick etc.)



Section Plan - including F-Shaped End Trim
1:1

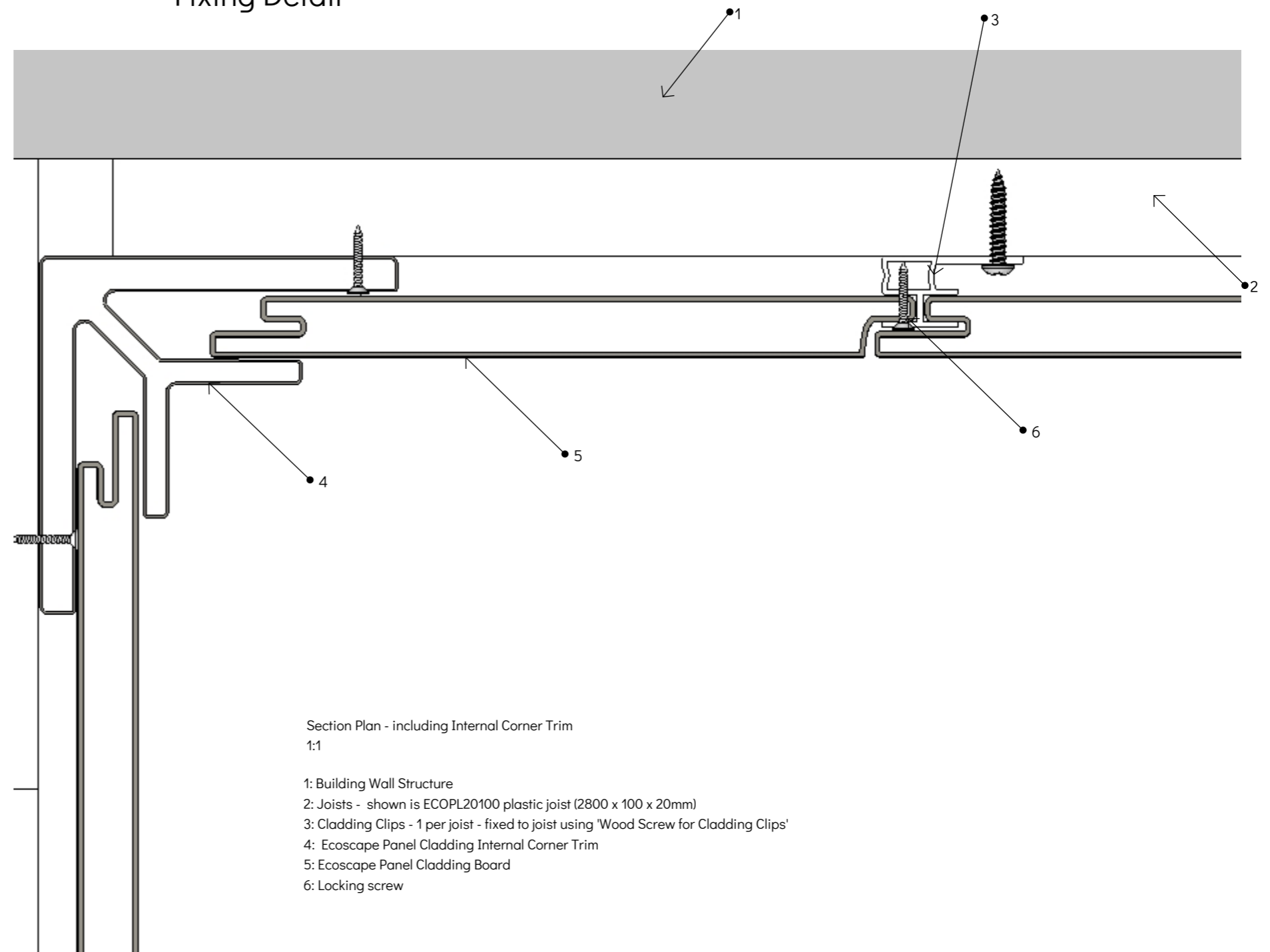
- 1: Building Wall Structure
- 2: Joists - shown is ECOPL20100 plastic joist (2800 x 100 x 20mm)
- 3: Cladding Clips - 1 per joist - fixed to joist using 'Wood Screws for Cladding'
- 4: Colour-coded screw - to recess of the adjacent first cladding board. (Ensure all holes are pre-drilled and countersunk)
- 5: Ecoscape Panel Cladding F-Shaped End Trim
- 6: Ecoscape Panel Cladding Board
- 7: 'Wood screw for Cladding' - To fix trim - applied into recess - at no more than 1000mm centres vertically. (Ensure all holes are pre-drilled and countersunk)
- 8: Locking screw - For 2no. cladding clips per board (placed no more than 100mm apart and usually placed centrally) an additional screw is required through front of cladding clip, and pre-drilled tongue of cladding board - to support the cladding board vertically.

Panel Cladding Internal Corner Typical Fixing Detail



Iso: Cladding Corner Detail - showing internal corner and interface of vertical slatted cladding with a render or brick wall finish

1:50



Section Plan - including Internal Corner Trim
1:1

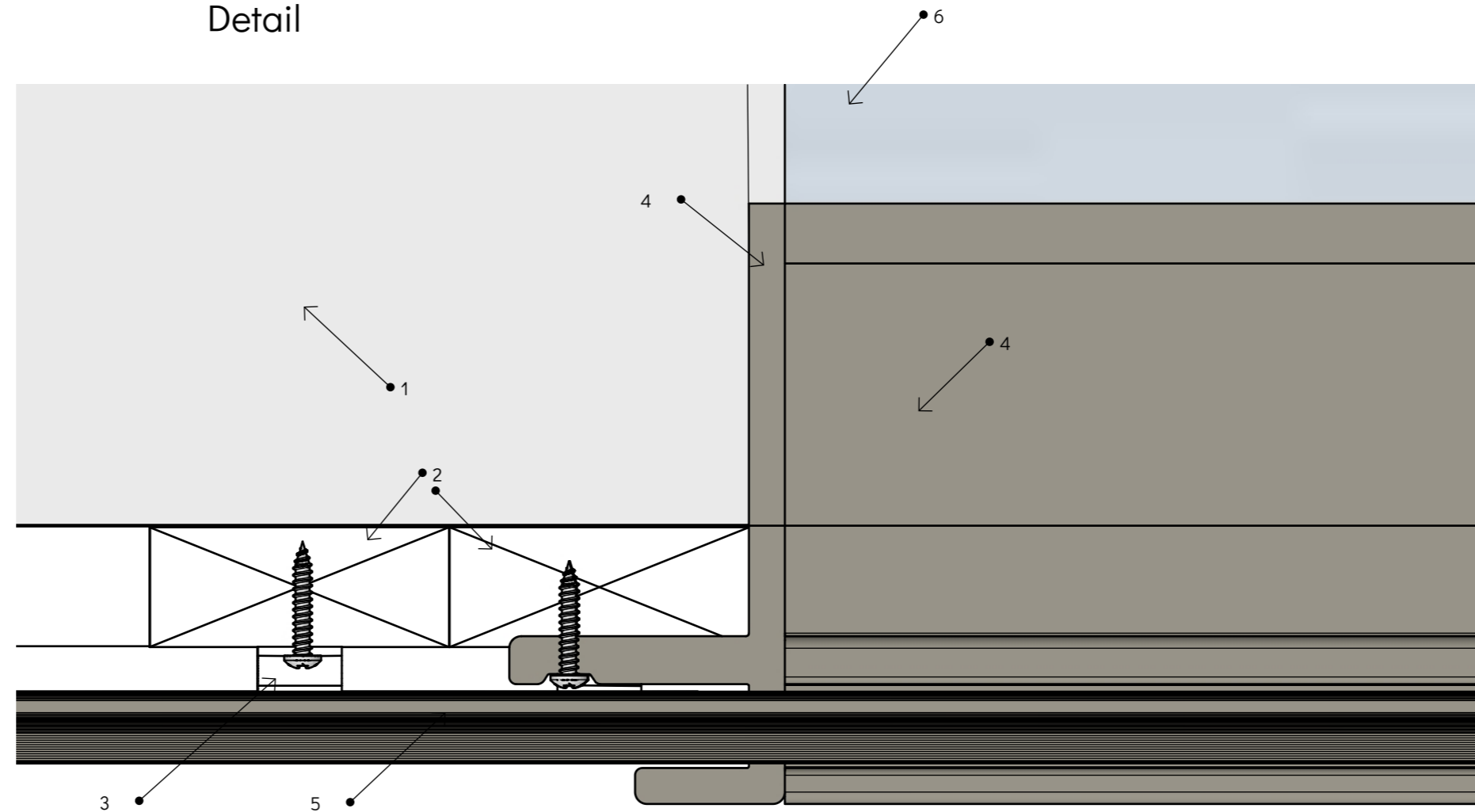
- 1: Building Wall Structure
- 2: Joists - shown is ECOPL20100 plastic joist (2800 x 100 x 20mm)
- 3: Cladding Clips - 1 per joist - fixed to joist using 'Wood Screw for Cladding Clips'
- 4: Ecoscape Panel Cladding Internal Corner Trim
- 5: Ecoscape Panel Cladding Board
- 6: Locking screw

Panel Cladding Reveal Typical Fixing Detail



Iso: Cladding Corner Detail - showing internal corner and interface of vertical slatted cladding with a render or brick wall finish

1:50



Section Plan - including Window Reveal Corner Trim
1:1

- 1: Building Wall Structure
- 2: Joists - shown is ECOPL20100 plastic joist (2800 x 100 x 20mm)
- 3: Cladding Clips - 1 per joist - fixed to joist using 'Wood Screw for Cladding Clips'
- 4: Ecoscape Panel Cladding Reveal Trim
- 5: Ecoscape Panel Cladding Board
- 6: Window Frame