

DACATIE

GREEN BUILDING SOLUTIONS

AUG 2016



FREE APP NOW
AVAILABLE ON:



Uniclass
L3272:P7114

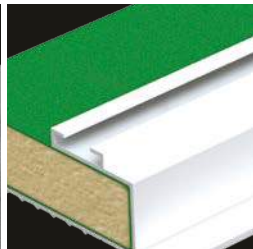
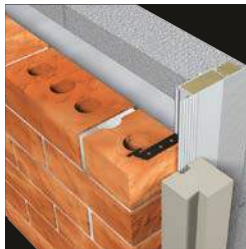
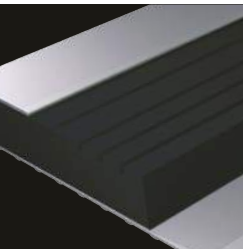
EPIC
F642:X725

CI/SfB

(31.9)

Hn6

AUG 2016



INSULATED CAVITY CLOSERS

FRAME FORMERS | INSULATED DPC'S



CONTENTS

	PAGE
Why use a Cavity Closer?	2
INSULATED CAVITY CLOSERS	
Supafix	3
Supafix Flexicloser	4
SF Multicloser	5
TF Multicloser	6
TF1000	7
TF2000	8
FIRE RATED CAVITY CLOSERS	
Supafix Fire Rated	9
TFR1000 Fire Rated	10
TFR2000 Fire Rated	11
XFR2000 Fire Rated	12
FRAME FORMERS	
FF4/5000	13
D2000	13
INSULATED DPCs	
Dacaproof	15
Dacablock Fire Rated	15
Dacastop Fire Rated	15
Dacasock Acoustic Fire Stop	16
ACCESSORIES	
Fixing Ties	16
Insulation Data	18-19



QPSLean

At QPSL we embrace the five Lean principles:

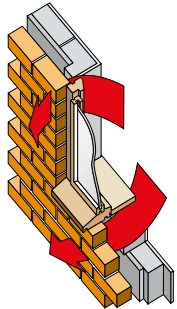
- » Create **Value** as our customers see it.
- » Improve **Value Stream** to do things that create Value for our customers.
- » Generate **Flow** to eliminate job queues.
- » Allow **Customer Pull** to make and deliver what the customer wants, when they want.
- » Strive for **Perfection** and never to be satisfied. We, all of us at QPSL, will always find better ways of providing value.

We are always **Learning** to be **Leaner**.

Why use a Cavity Closer?

HEAT LOSS AND COLD PENETRATION

The problems of cold bridging are recognised in the Part L Building Regulation 2010 and Scottish Building Regulations 2004 (amended 2013). Dacatie Insulated Cavity Closers are used to overcome thermal loss that occurs around unprotected cavities and reveals. Thermal loss can result in problems of condensation, staining and mould growth at the reveals of these openings. Prolonged exposure to such factors will lead to a deterioration of the internal plaster and paint work. The use of Dacatie Cavity Closers will help to prevent the occurrence of such factors.

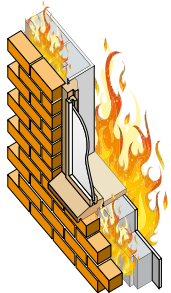


PREVENT MOISTURE PENETRATION

The use of a Dacatie Cavity Closer or frame former will prevent the ingress of water around a window or door, as required for compliance with Part C of the Building Regulations. To achieve this it is important to specify a frame setback position of 30mm with a recognised sealant around the frame.

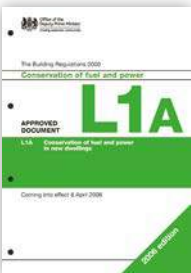
CREATE A FIRE BARRIER FOR PART 'B' COMPLIANCE

Where a fire barrier is required, a Dacatie Fire Rated Cavity Closer (pages 9-12) should be used. The closers have fire integrity ratings from 30 minutes to an hour.

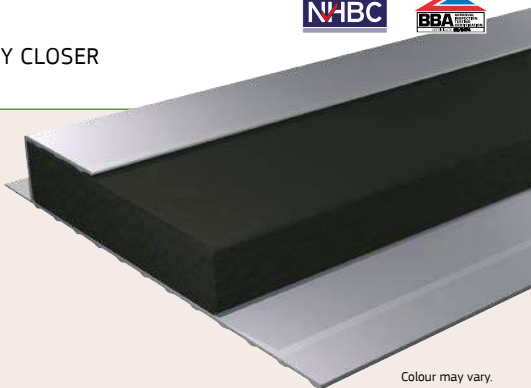


COMPLY WITH PART L OF THE BUILDING REGULATIONS

Building Regulation (Part L) compliance is important. The minimum thermal resistance path through the closer must be at least 0.45 m²K/W. Dacatie Closers well exceed this required value.



Zero GWP
& Zero ODP
Insulation



Colour may vary.

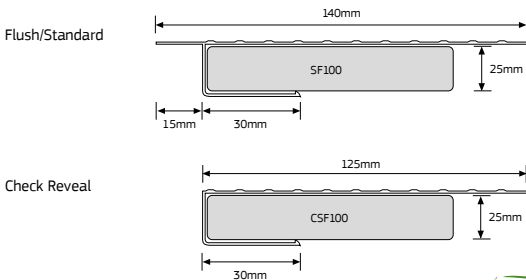
WEATHER RATING

Flush: Severe (with 30mm set back) **Check Reveal:** Very Severe

USAGE

A versatile and economic PVCu insulated closer for cavity widths between 50 and 100mm. Second fix applications.

- » Complies with new Part L Building Regulations 2010
- » Accepts all window and door frame material
- » Zero GWP - Zero ODP

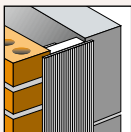


INSULATION DATA
AVAILABLE ON
PAGES 18-19

SIZES AND ORDER CODES

Stock Lengths	2.1m and 3.0m
Packing	10 lengths per pack
Cavity Widths	5mm intervals between 50 and 100mm

TYPE	CODE	EXAMPLE
Standard	SF plus cavity width in mm	SF75
Check Reveal	CSF plus cavity width in mm	CSF75



FREE APP NOW AVAILABLE



- » Product Selector
- » Sample Request
- » Contractor info
- » Stockists

Supafix Flexicloser

INSULATED CAVITY CLOSER



Zero GWP
& Zero ODP
Insulation

BEST
ENVIRONMENTAL
OPTION



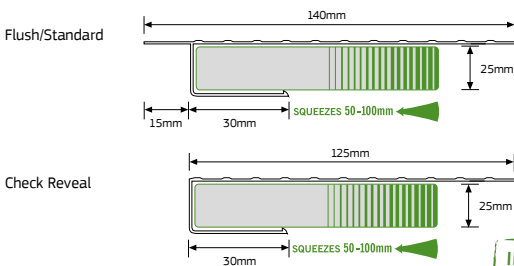
WEATHER RATING

Flush: Severe (with 30mm set back) **Check Reveal: Very Severe**

USAGE

Supafix Flexicloser is easy to use to achieve building regulations where cavity widths are unknown or vary on site. The product is a particularly useful solution in a second fix installation when a frame former is not required.

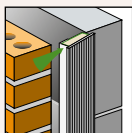
- » Insulation with Ecosse technology – Green Guide Rating A+
- » Zero GWP – Zero ODP
- » BRE Compliant (Doc. L 2010)
- » One size fits all 50 – 100mm
- » 60Kg/m³ Density



INSULATION DATA
AVAILABLE ON
PAGES 18-19

SIZES AND ORDER CODES

Stock Lengths	2.4m	
Packing	10 lengths per pack	
Cavity Widths	100mm - compresses down to 50mm	
TYPE	CODE	EXAMPLE
Standard	SF Flexicloser	SF Flexi
Check Reveal	CSF Flexicloser	CSF Flexi



Patent no. GB 2305 448 C



FREE APP NOW AVAILABLE



- » Product Selector
- » Sample Request
- » Contractor info
- » Stockists

Ecosse is a registered Trade Mark of Knauf Insulation.

SF Multicloser

MULTI-WIDTH INSULATED
CAVITY CLOSER



Zero GWP
& Zero ODP
Insulation

5 WIDTHS
IN 1 CAVITY CLOSER

50mm
65mm
75mm
85mm
100mm



Colour may vary.

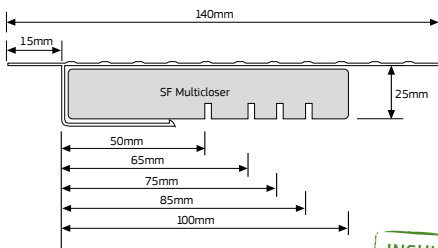
WEATHER RATING

Flush: Severe (with 30mm set back) **Check Reveal:** Very Severe

USAGE

A versatile and economic PVCu insulated closer for cavity widths between 50 and 100mm. Second fix applications.

- » Economic and versatile on site (easily trimmed)
- » One profile suits 5 cavity widths – insulation trimmed on site
- » Complies with new Part L Building Regulations 2010
- » Accepts all window and door frame material
- » Insulation is zero rated for ozone depletion potential (ODP)

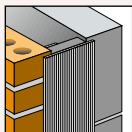


INSULATION DATA
AVAILABLE ON
PAGES 18-19

SIZES AND ORDER CODES

Stock Lengths	2.4m
Packing	10 lengths per pack
Cavity Widths	50, 65, 75, 85 and 100mm

TYPE	CODE	EXAMPLE
Standard	SF Multi	SF Multi
Check Reveal	CSF Multi	CSF Multi



FREE APP NOW AVAILABLE



- » Product Selector
- » Sample Request
- » Contractor info
- » Stockists

TF Multicloser

MULTI-WIDTH INSULATED
CAVITY CLOSER



Zero GWP
& Zero ODP
Insulation

FOR WIDER
CAVITIES



Colour may vary.

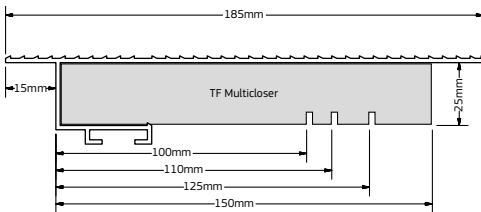
WEATHER RATING

Flush: Severe (with 30mm set back) **Check Reveal:** Very Severe

USAGE

A versatile insulated cavity closer that is easy to use to achieve building regulations where cavity widths are 100mm - 150mm. Can be used for first or second fix.

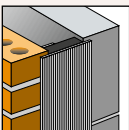
- » Complies with new Part L Building Regulations 2010
- » Overcomes cavity width variations with one profile to cover 4 cavity widths.
- » Easy to install



INSULATION DATA
AVAILABLE ON
PAGES 18-19

SIZES AND ORDER CODES

Stock Lengths	2.4m	
Packing	6 lengths per pack	
Cavity Widths	100, 110, 125 and 150mm	
TYPE	CODE	EXAMPLE
Standard	TF Multicloser	TF Multi
Check Reveal	CTF Multicloser	CTF Multi



Patent no. GB 2305 448 C



FREE APP NOW AVAILABLE



- » Product Selector
- » Sample Request
- » Contractor info
- » Stockists

TF1000

INSULATED CAVITY CLOSER



Zero GWP
& Zero ODP
Insulation



Colour may vary.

WEATHER RATING

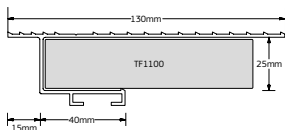
Flush: Severe (with 30mm set back) **Check Reveal:** Very Severe

USAGE

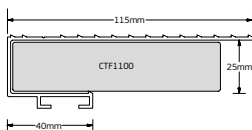
A versatile insulated closer for cavities between 50 and 100mm (5mm increments). Suitable for first or second fix applications. Check reveal option also available.

- » Complies with new Part L Building Regulations 2010
- » Accepts all window and door frame material
- » Insulation is zero rated for ozone depletion potential (ODP)

Flush/Standard



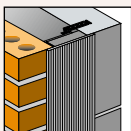
Check Reveal



INSULATION DATA
AVAILABLE ON
PAGES 18-19

SIZES AND ORDER CODES

Stock Lengths	2.1m and 3.0m	
Packing	10 lengths per pack	
Cavity Widths	5mm intervals between 50 and 100mm	
TYPE	CODE	EXAMPLE
Standard	TF1 plus cavity width in mm	TF1075
Check Reveal	CTF1 plus cavity width in mm	CTF1085
Fixing Ties	Fix with DTU ties every 225mm (100 ties per pack)	



For first fix installations
use **FIXING TIES**
on page 16

TF2000

INSULATED CAVITY CLOSER - wider cavities



Zero GWP
& Zero ODP
Insulation



Colour may vary.

WEATHER RATING

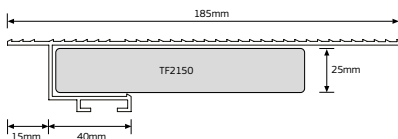
Flush: Severe (with 30mm set back) **Check Reveal: Very Severe**

USAGE

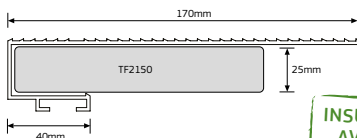
A versatile insulated closer for wider cavities between 110 and 160mm (5mm increments). Suitable for first or second fix applications. Check reveal option also available.

- » A closer for wider cavities 110 - 160mm (160+POA)
- » Complies with new Part L Building Regulations 2010
- » Accepts all window and door frame material
- » Insulation is zero rated for ozone depletion potential (ODP)

Flush/Standard



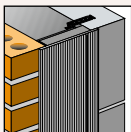
Check Reveal



INSULATION DATA
AVAILABLE ON
PAGES 18-19

SIZES AND ORDER CODES

Stock Lengths	2.1m and 3.0m	
Packing	6 lengths per pack	
Cavity Widths	5mm intervals between 110 and 160mm	
TYPE	CODE	EXAMPLE
Standard	TF2 plus cavity width in mm	TF2120
Check Reveal	CTF2 plus cavity width in mm	CTF2140
Fixing Ties	Fix with DTU ties every 225mm (100 ties per pack)	



Patent no. GB 2305 448 C

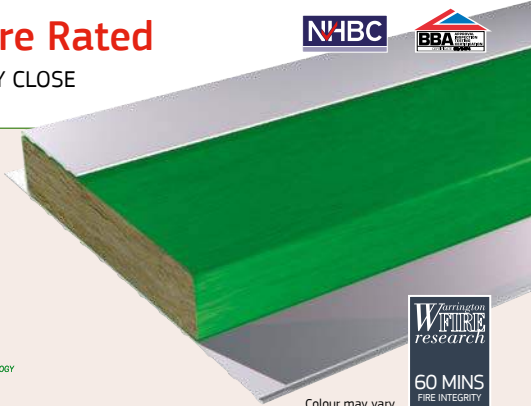
WIDER CAVITY WIDTHS
Up to 300mm can be closed with
these profiles as "Specials".
Available only on request.

Supafix Fire Rated

INSULATED CAVITY CLOSE



Zero GWP
& Zero ODP
Insulation



Colour may vary.

WEATHER RATING

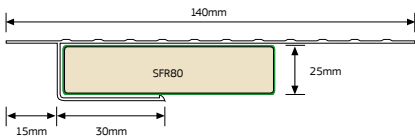
Flush: Severe (with 30mm set back) **Check Reveal:** Very Severe

USAGE

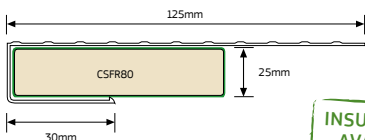
Supafix Fire Rated (SFR) is a PVCu cavity closer with mineral wool insulation offering 60 minute fire integrity. It can be used in conjunction with any window or door material or system, is suitable for second fix applications & timber frame construction.

- » 60 minute Fire Integrity
- » Complies with new Part L Building Regulations 2010
- » Accepts all window and door frame material
- » 140Kg/m³ Density

Flush/Standard



Check Reveal



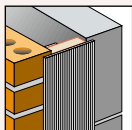
INSULATION DATA
AVAILABLE ON
PAGES 18-19

SIZES AND ORDER CODES

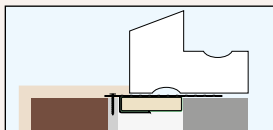
Stock Lengths 2.4m
Packing 10 lengths per pack
Cavity Widths 50 – 100mm

TYPE	CODE	EXAMPLE
Standard	SFR plus insulation width in mm	SFR80
Check Reveal	CSFR plus insulation width in mm	CSFR100

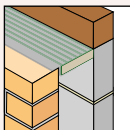
STANDARD INSTALLATION



TIMBER FRAME INSTALLATION



WALL PLATE INSTALLATION

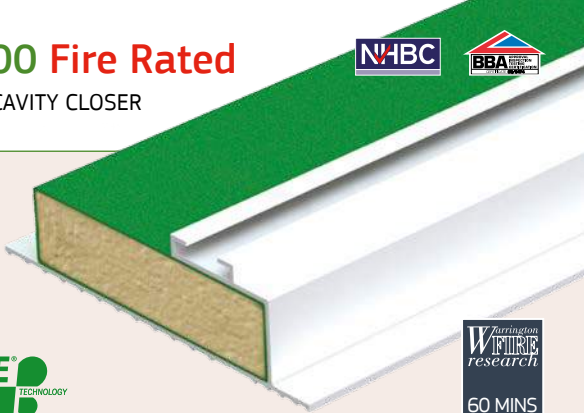


TFR1000 Fire Rated

INSULATED CAVITY CLOSER



Zero GWP
& Zero ODP
Insulation



Colour may vary.

WEATHER RATING

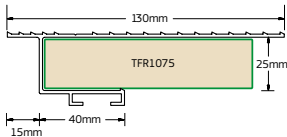
Flush: Severe (with 30mm set back) **Check Reveal:** Very Severe

USAGE

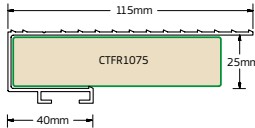
TFR1000 has a rigid PVCu profile containing a mineral wool insulation that forms a continuous fire rated insulated cavity closer around door and window openings. Suitable for first or second fix applications. Check reveal option also available.

- » 60 mins Fire Integrity
- » Complies with new Part L Building Regulations 2010
- » Accepts all window and door frame material
- » 140Kg/m³ Density

Flush/Standard



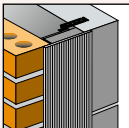
Check Reveal



INSULATION DATA
AVAILABLE ON
PAGES 18-19

SIZES AND ORDER CODES

Stock Lengths	2.4m	
Packing	10 lengths per pack	
Cavity Widths	50 - 100mm	
TYPE	CODE	EXAMPLE
Standard	TFR1000 plus insulation width in mm	TFR80
Check Reveal	CTFR1000 plus insulation width in mm	CTFR100
Fixing Ties	Fix with DTU ties every 225mm (100 ties per pack)	



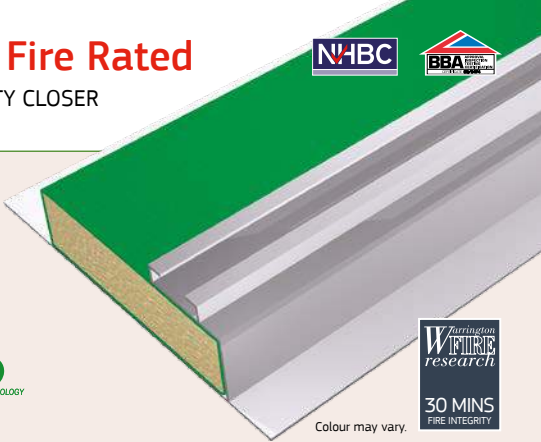
For first fix installations
use **FIXING TIES**
on page 16

TFR2000 Fire Rated

INSULATED CAVITY CLOSER



Zero GWP
& Zero ODP
Insulation



Colour may vary.

WEATHER RATING

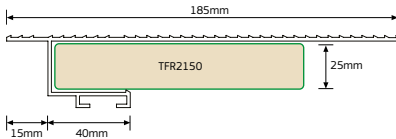
Flush: Severe (with 30mm set back) **Check Reveal:** Very Severe

USAGE

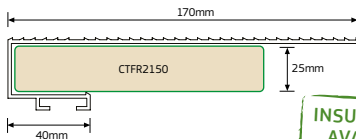
TFR2000 has a rigid PVCu profile containing a mineral wool insulation that forms a continuous fire rated insulated cavity closer around door and window openings. Suitable for first or second fix applications. Check reveal option also available.

- » 30 mins Fire Integrity
- » Complies with new Part L Building Regulations 2010
- » Accepts all window and door frame material
- » 140Kg/m³ Density

Flush/Standard



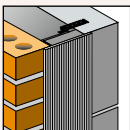
Check Reveal



**INSULATION DATA
AVAILABLE ON
PAGES 18-19**

SIZES AND ORDER CODES

Stock Lengths	2.4m	
Packing	6 lengths per pack	
Cavity Widths	5mm intervals between 110mm & 160mm	
TYPE	CODE	EXAMPLE
Standard	TFR2000 plus insulation width in mm	TFR2160
Check Reveal	CTFR2000 plus insulation width in mm	CTFR2160
Fixing Ties	Fix with DTU ties every 225mm (100 ties per pack)	



FREE APP NOW AVAILABLE



- » Product Selector
- » Sample Request
- » Contractor info
- » Stockists

XFR2000 Fire Rated

INSULATED CAVITY CLOSER FIRE BARRIER



Zero GWP
& Zero ODP
Insulation



Colour may vary.

WEATHER RATING

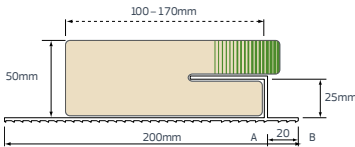
Flush: Severe (with 30mm set back) **Check Reveal:** Very Severe

USAGE

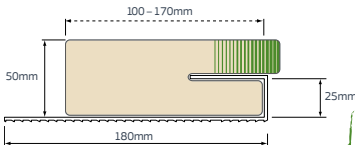
XFR2000 is a fire rated insulated cavity closer with mineral wool insulation for wider cavities. It is suitable for second fix installations when a fire barrier is required.

- » 60 minute Fire Integrity / 30 minute Fire Insulation
- » Complies with new Part L Building Regulations 2010
- » Accepts all window and door frame material
- » 100Kg/m³ Density

Flush/Standard



Check Reveal



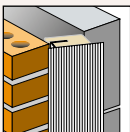
INSULATION DATA
AVAILABLE ON
PAGES 18-19

SIZES AND ORDER CODES

Stock Lengths	2.4m
Packing	4 lengths per pack
Cavity Widths	100 - 125 - 150 - 170mm*
TYPE	CODE
Standard	XFR plus insulation width in mm
Check Reveal	CXFR plus insulation width in mm

EXAMPLE
XFR2100
CXFR2170

*In-between sizes available



Patent no. GB 2305 448 C



FREE APP NOW AVAILABLE



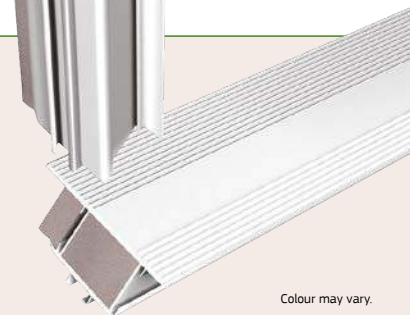
- » Product Selector
- » Sample Request
- » Contractor info
- » Stockists

Frame Formers

INSULATED CAVITY CLOSER

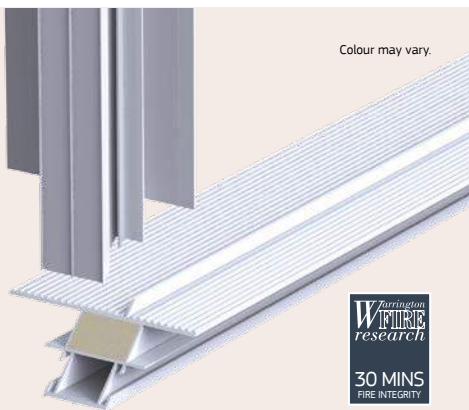


FF4/5000



Colour may vary.

D2000/FR



Colour may vary.



*30 minutes fire rating as bar length

WEATHER RATING

Flush: Severe (with 30mm set back) **Check Reveal:** Very Severe

USAGE

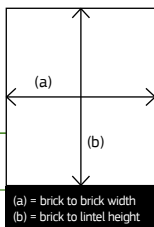
A fully insulated cavity closer made up into sturdy factory built frame former eliminating the need for site fabricated timber templates around window and door reveals.

FIXING METHODS

Frame formers can be manufactured with welded corners or using corner brackets - both available through Dacatie. Contact us for further details.

- » Saves time on site
- » Part L 2010 compliant
- » Accepts all window and door materials
- » Insulation is zero rated for ozone depletion potential (ODP)
- » Available in two profiles FF4000 and FF5000 (for internal fixing)
- » Cavity Widths: FF4000: 75 – 110mm, FF5000: 110 – 160mm
- » D2000 also available as a 50 - 100mm fire rated frame former (FR)

Ordering & Installation



HOW TO ORDER

For Dacatie Frame Former, the following information should be supplied:

1. Overall width (a - structural opening)	mm
2. Overall height (b - structural opening)	mm
3. Cavity width	mm
4. Three or four sided former	3/4
5. Plaster stop required? (30mm offset)	yes/no
6. Check reveal	yes/no

It is the responsibility of the contractor to ensure frames are supplied as ordered before installation, as no responsibility for any incorrect dimensions can be considered after the frame former has been built into the brickwork.

Note: when ordering for timber frame constructions, please contact our technical department.

APPLICATION/FIXING DETAILS

The Dacatie frame Former is suitable for use with all window and door frames, including timber, PVCu and aluminium. For easy installation follow these steps.

Step 1

Build wall up to sill height and locate the Dacatie Frame Former in the cavity (check former is square and propped up vertically).

Step 2

Build up courses of brickwork/blockwork inserting brick ties alternately between the brick and the block every 225mm (every three bricks or every course of block work).

Step 3

Brick up to lintel height and remove bracing (if applicable).

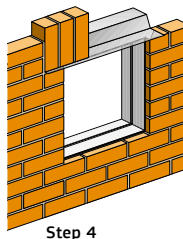
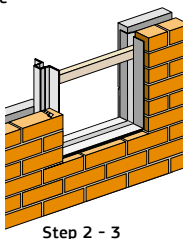
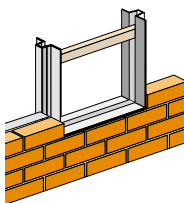
Step 4

Build in lintel and upper brickwork.

NOTES FOR WINDOW AND DOOR INSTALLATION

Check window or door is within tolerances; windows should be 10mm less than inside width of former and 8mm less than the inside height of former. Fix with standard window fixings (e.g. lugs, reveal straps or bolt fixings).

Non standard shapes available



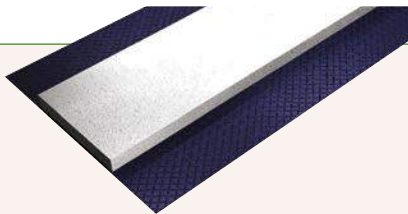
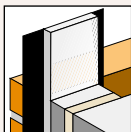
Dacaproof, Dacablock & Dacastop

INSULATED DPC



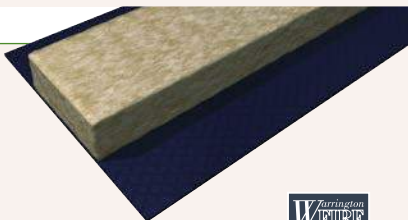
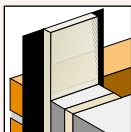
- » Economical
- » Easy to install as brickwork is constructed
- » CFC and HCFC free
- » Dacablock provides 60 minutes Fire Integrity – with mineral wool insulation (MW)
- » Dacastop provides Vertical and Horizontal applications

Dacaproof



Product	Size	Insulation	Length	No / Pack
DP1	165 x 100 x 18mm	EPS	2.5m	10
DP2	225 x 150 x 18mm	EPS	2.5m	10
DP3	165 x 100 x 12mm	PE	10m coil	5
DP4	225 x 150 x 12mm	PE	10m coil	5

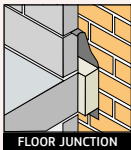
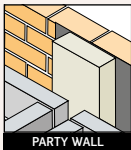
Dacablock Fire Rated



Product	Size	Insulation	Length	No / Pack
DB5	165 x 100 x 25mm	MW	1.2m	10
DB6	225 x 150 x 25mm	MW	1.2m	10



Dacastop Fire Rated



Product	Size	Insulation	Length	No / Pack
Vertical				
DS1/75 or 100	360 x 260 x 75mm	MW	1.2m	5
DS2/75 or 100	400 x 300 x 75mm	MW	1.2m	5
Horizontal				
DS3/75 or 100	500 x 150 x 75mm	MW	1.2m	5
DS4/75 or 100	600 x 250 x 75mm	MW	1.2m	5



Daca Multisock Acoustic Fire Stop

INSULATED DPC

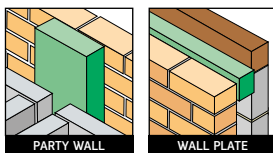


Designed to prevent fire penetration, aid reduction of sound transmission and help maintain the thermal integrity of the insulation requirements under Building Regulations through wall cavity in both masonry / block and brick timber frame and steel cavity wall structures.

1.2m length of semi rigid ECOSE™ mineral wool slab fully encapsulated in a recycled polythene printed sleeve, supplied winged.



- » Economical
- » Easy to install
- » Vertical and horizontal application
- » Non-combustible
- » Chemically inert
- » Does not rot or degrade
- » Will not grow fungi, mould or bacteria
- » Will not support vermin



Also available, DACATIE MULTISOCK WIDE 200mm & 300mm (std) and 225 & 450mm (to order) Wide Cavity Socks to suit cavity sizes from 40 to 225mm.

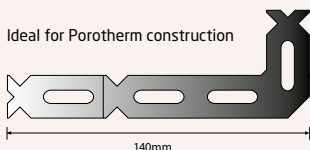
Product	Cavity Width	No / Pack	Colour	Product	Cavity Width	No / Pack	Colour
MDK50-STD	40-50mm	40	Red	MDK185-STD	166-185mm	6	Purple
MDK65-STD	51-65mm	30	Blue	MDK205-STD	186-205mm	4	Green
MDK75-STD	66-75mm	25	Pink	MDK225-STD	206-225mm	4	Pink
MDK90-STD	76-90mm	20	Purple	MDK250-STD	226-250mm	4	Blue
MDK100-STD	91-100mm	20	Green	MDK265-STD	251-265mm	4	
MDK120-STD	101-120mm	15	White	MDK285-STD	266-285mm	4	
MDK130-STD	121-130mm	15	Brown	MDK295-STD	286-295mm	4	
MDK140-STD	131-140mm	15	Red	MDK315-STD	296-315mm	4	
MDK150-STD	141-150mm	12	Yellow	MDK335-STD	316-335mm	4	
MDK165-STD	151-165mm	12	Grey	MDK350-STD	336-350mm	4	

Accessories

FIXING TIES

DTS Fixing Ties

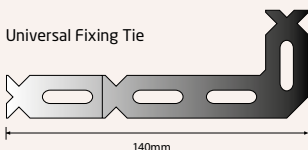
Ideal for Porotherm construction



Product	DTS Fixing Tie
Size	0.6mm
Material	Steel
No / Pack	100

DTU Fixing Ties

Universal Fixing Tie



Product	DTU Uni-Tie
Thickness	2mm
Material	Polypropylene
No / Pack	100

Cavity Closer fitting guidelines

CAVITY CLOSER ORIENTATION

Standard Installation



Check Reveal Installation



Note: not to scale - showing orientation only

FIRST FIX

When building cavity closer into the brick/block work using a timber former or window.
Products: TF1000, TF2000, TFR1000, TFR2000, TF Multi - Standard and Check Reveal.

- If using a timber former, make an accurate timber template the same size as the structural opening.
- Cut closer to the size of the sill and jamb adding a minimum of 50mm run on at the base of the jambs.
- Tack/nail the cavity closer to the window or former along the sill and jamb ensuring the run on is at the base of the jamb.
- Remove the relevant flanges on the run on so you are left only with the cavity width portion.
- If building in the window, position the frame with 30mm overlap of cavity closer from the inside of the outer skin. (For Check Reveal installations position the closer flush with the outside of the window, with the closer's single flange projecting to the inside).
- Build the inner and outer skins up to the sill level.
- Position the window/former with the cavity closer attached onto the sill in the required position.
- Ensure the timber window/former is level and upright then prop up in position.
- Build up the two skins ensuring that they butt up tight to the closer.
- Use a Dacatie fixing tie every 225mm alternating between the two skins as you build up to the height of the window/former.
- For check reveal installations, build inner skin up to the inside flange of the cavity closer and butt to the outer skin – allowing for the required check reveal overlap.

SECOND FIX

Used where the cavity is already formed eg. Refurbishment work.

Products: SF, SF Multi, SF Flexi, SFR, TF Multi, XFR2000 – Standard and Check Reveal (first fix products can also be installed using this method).

- Follow stages 1a. and 1b. to cut the closer to size.
- When using a multi width cavity closer, cut the insulation to cavity size.
- Push fit the closer into the jamb cavity opening ensuring the orientation is correct (exposed insulation points towards the internal skin).
- Push fit the sill section in place, ensuring the correct orientation.
Check the closer butts up to the jambs.
- To secure in place, use galvanised or non-ferrous nails or screw through the flange into masonry.
- For check reveal installations, cut to size as mentioned, ensure the single flange sits on the internal skin, and the front butts up against the inside of the external skin.

If you require further installation guidance please visit the website or call 0161 627 4222.

Please note: above guidelines are based on 3 sided window installations for 3+ sides please contact Dacatie. The guidelines have been produced to aid the installer, Dacatie cannot be held responsible for the installation of their products on site.

FABRICATING TIMBER WINDOWS? qwood.co.uk



ENHANCED TIMBER COMPOSITE COMPONENTS

DACATIE Insulated Cavity Closers

INSULATION ENVIRONMENTAL DATA

GWP LEVELS LESS THAN 5, ODP ZERO AND GREEN GUIDE A+

Dacatie Insulated Cavity Closers offer different insulation materials with the option of GWP levels of <5, ODP levels of zero and Green Guide ratings of A+.

**GWP&ODP
ZERO**

BREEAM (and Code for Sustainable Homes)

BRE has advised that Insulated Cavity Closers as a product do not gain Green Guide credits, since they do not enhance BREEAM scheme categories.

BUILDING REGULATIONS

Building Regulation (Part L) compliance is important. The path of minimum thermal resistance through the closer must be at least 0.45 m²K/W, which Dacatie closers achieve.

RECYCLED CONTENT

All Dacatie Cavity Closers are produced with a recycled content of approx. 50%. The materials used predominately comprise a blend of post-consumer and/ or post-industrial recycled material. The insulation materials used can typically contain a recycled content of approx. 5%.

Product ***	Insulation	Cavity widths mm	ISO 9001: 2008	BBA Certificate	Part L* Compliance 2010	Robust Detail BR262	INSULATION Ψ90/90 W/mK	(25MM THICK EXCEPT XFR2000 & DPCs) R value m ² K/W	GWP	ODP	Green Guide	WEATHER RATING 30 mm s/b	Check Reveal	Fire Integrity Minutes
CAVITY CLOSERS														
Supafix SF	EPS	50 – 100	✓	✓	✓	✓	0.038	0.658	0	zero	A+	Severe	Very Severe	n/a
SF Multicloser	EPS BLACK	50 – 100	✓	✓	✓	✓	0.032	0.781	0	zero	A+	Severe	Very Severe	n/a
SF Flexicloser****	ECOSE RS60**	50 – 100	✓	✓	✓	✓	0.037	0.676	0	zero	A+	Severe	Very Severe	n/a
TF Multicloser	EPS BLACK	100 – 150	✓	✓	✓	✓	0.032	0.781	0	zero	A+	Severe	Very Severe	n/a
TF1000	EPS BLACK	50 - 100	✓	✓	✓	✓	0.032	0.781	0	zero	A+	Severe	Very Severe	n/a
TF2000	EPS BLACK	110 - 160	✓	✓	✓	✓	0.032	0.781	0	zero	A+	Severe	Very Severe	n/a
FF4000/FF5000	EPS	75 – 170	✓	✓	✓	✓	0.038	0.658	0	zero	A+	Severe	Very Severe	n/a
Supafix Fire Rated SFR	ECOSE RS140	50 – 100	✓	✓	✓	✓	0.036	0.694	0	zero	B	Severe	Very Severe	60
TFR1000 Fire Rated	ECOSE RS140	50 - 100	✓	✓	✓	✓	0.036	0.694	0	zero	B	Severe	Very Severe	60
TFR2000 Fire Rated	ECOSE RS140	110 – 160	✓	✓	✓	✓	0.036	0.694	0	zero	B	Severe	Very Severe	30
XFR2000	ECOSE RS100	100 - 170	✓	✓	✓	✓	0.036	1.389	0	zero	A+	Severe	Very Severe	60
INSULATED DPC														
Dacaproof	PE (12mm)	n/a	✓				0.040	0.300	0	zero	A+	n/a	n/a	n/a
	EPS (18mm)	n/a	✓				0.038	0.474	0	zero	A+	n/a	n/a	n/a
Dacablock (75mm)	ECOSE RS60	n/a	✓				0.037	2.027	0	zero	A+	n/a	n/a	60
	(100mm)	n/a	✓				0.037	2.703	0	zero	A+	n/a	n/a	60
Dacastop (75mm)	ECOSE RS60	n/a	✓				0.037	2.027	0	zero	A+	n/a	n/a	60
	(100mm)	n/a	✓				0.037	2.703	0	zero	A+	n/a	n/a	60
Dacasock	ECOSE RS45	n/a	✓				0.037	-	0	zero	A+	n/a	n/a	240

NEED MORE HELP?

Download our app for all the latest product information. Just search the Dacatie app on the App Store & Google Play or scan here:



QPSL Group strives for continuous improvement in our environmental, health and safety management systems and in the environmental quality of our products, processes, and services.

n/a = not applicable.

- * Path of minimum thermal resistance > 0.45 m²K/W (Assign default heat loss - Ψ values – rates in accordance with BRE paper IP 1/06).
- ** Ecose is a registered Trade Mark of Knauf Insulation.
- *** Closers include extruded PVCu carrier (GWP <5) of which 5% recycled. Produced under BS EN ISO 9001:2000. PVCu sourced from ISO 14001 rated UK suppliers.

**** Best environmental option.

Insulation thickness.

Cavity closers: 25mm (Except XFR2000 - 50mm thickness)
Insulated DPCs: See guide for details.

WANT MORE?



More information available from the website



Online specification video, how to pick the right closer. (RIBA Approved CPD)



CAD drawings available online



DACATIE

GREEN BUILDING SOLUTIONS

www.dacatie.co.uk



TIMBER COMPOSITE
BEADS FOR WINDOW
FABRICATORS



SAVE
TIME



REDUCE
COST



MINIMISE
WASTE



qwood.co.uk

A RANGE OF PRODUCTS YOU CAN TRUST

Supafix

INSULATED
CAVITY CLOSER

Supafix Flexicloser

INSULATED
CAVITY CLOSER

SF Multicloser

MULTI-WIDTH INSULATED
CAVITY CLOSER

TF Multicloser

MULTI-WIDTH INSULATED CAVITY
CLOSER FOR WIDER CAVITIES

TF1000

INSULATED
CAVITY CLOSER

TF2000

INSULATED
CAVITY CLOSER

SFR Fire Rated

INSULATED
CAVITY CLOSER

TFR1000 Fire Rated

INSULATED
CAVITY CLOSER

TFR2000 Fire Rated

INSULATED
CAVITY CLOSER

XFR2000 Fire Rated

INSULATED
CAVITY CLOSER

Frame Formers

INSULATED
CAVITY CLOSER

DPC Fire Rated

INSULATED
DPC

DACATIE

GREEN BUILDING SOLUTIONS

SALES & TECHNICAL SUPPORT: +44 (0) 161 627 4222

fax: +44 (0) 161 627 4333 info@dacatie.co.uk

www.dacatie.co.uk

Quantum Profile Systems Ltd, Salmon Fields,
Royton, Oldham, OL2 6JG, UK

QUANTUM
FLOORINGSOLUTIONS

DACATIE
GREEN BUILDING SOLUTIONS

Qwood
TIMBER INNOVATION

QLEANSOLUTIONS
INNOVATIVE PROFILE SUPPLY

PART OF



QPSL

LEAN, GREEN, SAFE & CLEAN

QPSL Group strives for continuous improvement in our environmental, health and safety management systems and in the environmental quality of our products, processes and services.

DACATIE is a registered trade mark of Quantum Profile Systems Limited.

Details correct at time of publication but please visit the website for the latest product information.