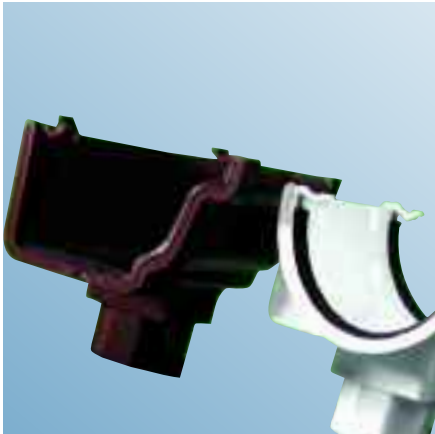


# Kayflow™



**Rainwater  
Underground  
& Soil  
Systems**

[www.kayflow.co.uk](http://www.kayflow.co.uk)



## Rainwater Systems

- Suitable for all types of projects including commercial, domestic and industrial
- Easy to fit with a complete range of colour matched fittings
- Choice of 4 designs
- 10 year guarantee\*
- High gloss finish with a choice of up to 5 colours
- Lightweight for ease of storage and transportation
- Low maintenance
- Durable and tough

The Kayflow Rainwater System is manufactured to the latest industry standards:

- BS EN 607:2004 (gutters and fittings)
- BS EN 12200/1:2000 (downpipes and fittings)
- BS EN 1462:2004 (fascia brackets)
- BSI kitemark KM508760



\* See Kayflow Rainwater guarantee for details

# Half Round



	Part No.	Description	Pack Qty.	Colour
	KF/P/2.5/*	Down Pipe 2.5m	6	W, BL, BR, C, GY
	KF/P/4/*	Down Pipe 4m	6	W, BL, BR
	KF/P/5.5/*	Down Pipe 5.5m	6	W, BL, BR, GY
	KF/G/4/*	Gutter 4m	6	W, BL, BR, GY
	KF/G/5/*	Gutter 5m	6	W, BL
	KF/A/1/*	90° Angle	20	W, BL, BR, GY
	KF/A/2/*	135° Angle	20	W, BL, BR, GY
	KF/E/1/*	External Stopend	100	W, BL, BR, GY
	KF/E/2/*	Internal Stopend	100	W, BL, BR, GY
	KF/K/1/*	Fascia Bracket	100	W, BL, BR, GY
	KF/O/1/*	Running Outlet	20	W, BL, BR, GY
	KF/DS/1/*	Sq/Rd Gutter Adaptor	40	W, BL, BR
	KF/U/1/*	Union Bracket	30	W, BL, BR, GY
	KF/B/1/*	92.5° Offset Bend	30	W, BL, BR, C, GY
	KF/B/2/*	112.5° Offset Bend	30	W, BL, BR, C, GY
	KF/B/3/*	Shoe	30	W, BL, BR, C, GY
	KF/C/1/*	Pipe Clip	100	W, BL, BR, C, GY
	OG/C/3/*	Concealed Fixing Pipe Clip	100	W, BL, BR, C
	KF/HS/1/*	Hopper (Sq/Rd)	10	W, BL, BR, C, GY
	KF/S/1/*	Pipe Socket	50	W, BL, BR, C, GY
	KF/Y/1/*	112.5° Branch	20	W, BL, BR, C, GY
	KF/DS/2/*	Sq/Rd Downpipe Adaptor	40	W, BL, BR, C

\* Indicate colour required by adding the following codes W=White, BL=Black, BR=Brown, C=Caramel, GY=Grey  
 Note: Please order in multiples of pack quantity only

	Part No.	Description	Pack Qty.	Colour*
	KF/PS/2.5/*	Down Pipe 2.5m	6	W, BL, BR, C
	KF/PS/4/*	Down Pipe 4m	6	W, BL, BR
	KF/PS/5.5/*	Down Pipe 5.5m	6	W, BL, BR, C
	KF/GS/4/*	Gutter 4m (114mm)	6	W, BL, BR, C
	KF/GS/5/*	Gutter 5m (114mm)	6	W, BL, BR
	KF/AS/1/*	90° Angle	20	W, BL, BR, C
	KF/AS/2/*	135° Angle	20	W, BL, BR, C
	KF/ES/1/*	External Stopend	100	W, BL, BR, C
	KF/ES/2/*	Internal Stopend	100	W, BL, BR
	KF/KS/1/*	Fascia Bracket	100	W, BL, BR, C
	KF/OS/1/*	Running Outlet	20	W, BL, BR, C
	KF/US/1/*	Union Bracket	30	W, BL, BR, C
	KF/OS/2/*	Stopend Outlet	20	W, BL, BR, C
	KF/DS/1/*	Sq/Rd Gutter Adaptor	40	W, BL, BR
	KF/BS/1/*	92.5° Offset Bend	30	W, BL, BR, C
	KF/BS/2/*	112.5° Offset Bend	30	W, BL, BR, C
	KF/BS/3/*	Shoe	30	W, BL, BR, C
	KF/CS/1/*	Pipe Clip	100	W, BL, BR, C
	KF/CS/2/*	Pipe Clip (Flush)	100	W, BL, BR, C
	KF/HS/1/*	Hopper (Sq/Rd)	10	W, BL, BR, C
	KF/SS/1/*	Pipe Socket	50	W, BL, BR, C
	KF/YS/1/*	112.5° Branch	20	W, BL, BR, C
	KF/DS/2/*	Sq/Rd Downpipe Adaptor	40	W, BL, BR, C

\* Indicate colour required by adding the following codes **W=White, BL=Black, BR=Brown, C=Caramel**  
**Note: Please order in multiples of pack quantity only**

	Part No.	Description	Pack Qty.	Colour*
	KF/PS/2.5/*	Down Pipe 2.5m	6	W, BL, BR, C
	KF/PS/4/*	Down Pipe 4m	6	W, BL, BR
	KF/PS/5.5/*	Down Pipe 5.5m	6	W, BL, BR, C
	OG/G/4/*	Gutter 4m	4	W, BL, BR, C
	OG/A/1/*	90° Angle (Internal)	10	W, BL, BR, C
	OG/A/2/*	90° Angle (External)	10	W, BL, BR, C
	OG/A/3/*	135° Angle (Internal)	10	W, BL, BR, C
	OG/A/4/*	135° Angle (External)	10	W, BL, BR, C
	OG/A/5/*	150° Angle (External)	10	W, BL, BR, C
	OG/E/1/*	External Stopend L/H	50	W, BL, BR, C
	OG/E/2/*	External Stopend R/H	50	W, BL, BR, C
	OG/K/1/*	Fascia Bracket	100	W, BL, BR, C
	OG/K/2/*	Top Hung Fascia Bracket	100	W, BL, BR, C
	OG/O/1/*	Running Outlet	10	W, BL, BR, C
	OG/O/2/*	Stopend Outlet R/H	10	W, BL, BR, C
	OG/O/3/*	Stopend Outlet L/H	10	W, BL, BR, C
	OG/U/1/*	Union Bracket	30	W, BL, BR, C

\* Indicate colour required by adding the following codes **W=White, BL=Black, BR=Brown, C=Caramel**  
**Note: Please order in multiples of pack quantity only**

	Part No.	Description	Pack Qty.	Colour*
	KD/G/4/*	Deep Gutter 4m	6	W, BL, BR
	KF/P/2.5/* KF/P/4/* KF/P/5.5/*	Down Pipe 2.5m Down Pipe 4m Down Pipe 5.5m	6 6 6	W, BL, BR W, BL, BR W, BL, BR
	KD/A/1/*	90° Angle	10	W, BL, BR
	KD/A/2/*	135° Angle	10	W, BL, BR
	KD/E/1/*	External Stopend	50	W, BL, BR
	KD/E/2/*	Internal Stopend	10	W, BL, BR
	KD/K/1/*	Fascia Bracket	100	W, BL, BR
	KD/O/1/*	Running Outlet	10	W, BL, BR
	KD/U/1/*	Union Bracket	30	W, BL, BR

\* Indicate colour required by adding the following codes W=White, BL=Black, BR=Brown  
 Note: Please order in multiples of pack quantity only



## Underground Systems

- User friendly easy fit system
- Lightweight, easy to handle
- 10 year guarantee\*
- Impact resistant and extremely durable in use
- A full range of products and ancillary fittings

The range has been tested in line with the following British standards:

- BS EN 1401-1 : 1998 PVC-U Underground Drainage Systems

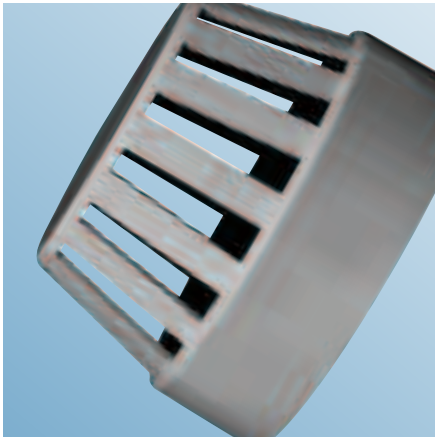
\* See Kayflow Underground guarantee for details

	Part No.	Description	Pack Qty.
	UG1	110mm Plain End Pipe 3m	1
	UG1/160	160mm Plain End Pipe 3m	1
	UG2	110mm Plain End Pipe 6m	1
	UG2/160	160mm Plain End Pipe 6m	1
	UG3	110mm Single Socket Pipe 3m	1
	UG3/160	160mm Single Socket Pipe 3m	1
	UG4	110mm Single Socket Pipe 6m	1
	UG4/160	160mm Single Socket Pipe 6m	1
	UG10	110mm DS Coupler (Double Socket)	1
	UG10/160	160mm DS Coupler (Double Socket)	1
	UG12	110mm DS Slip Coupler (Double Socket)	1
	UG12/160	160mm DS Slip Coupler (Double Socket)	1
	UG16	45° x 110mm DS Bend (Double Socket)	1
	UG16/160	45° x 160mm DS Bend (Double Socket)	1
	UG18	30° x 110mm DS Bend (Double Socket)	1
	UG18/160	30° x 160mm DS Bend (Double Socket)	1
	UG20	15° x 110mm DS Bend (Double Socket)	1
	UG20/160	15° x 160mm DS Bend (Double Socket)	1
	UG21	87° x 110mm Double Socket Bend (Swept)	1
	UG22	87° x 110mm SS Bend (Single Socket)	1
	UG22/160	87° x 160mm SS Bend (Single Socket)	1
	UG24	45° x 110mm SS Bend (Single Socket)	1
	UG24/160	45° x 160mm SS Bend (Single Socket)	1
	UG26	30° x 110mm SS Bend (Single Socket)	1
	UG26/160	30° x 160mm SS Bend (Single Socket)	1
	UG28	15° x 110mm SS Bend (Single Socket)	1
	UG28/160	15° x 160mm SS Bend (Single Socket)	1
	UG29	87° x 110mm Single Socket Bend (Swept)	1
	UG38	45° x 110mm Junction (Triple Socket)	1
	UG38/160	45° x 160mm Junction (Triple Socket)	1
	UG39	87° x 110mm Junction (Triple Socket) (Swept)	1
	UG44	87° x 110mm Junction (Double Socket)(Swept)	1
	UG44/160	87° x 160mm Junction (Double Socket)(Swept)	1



# Underground

	Part No.	Description	Pack Qty.
	UG47	45° x 110mm DS Junction (Double Socket)	1
	UG47/160	45° x 160mm DS Junction (Double Socket)	1
	UG48/160	87° x 160 x 110mm Junction (Double Socket)	1
	UG49/160	45° x 160 x 110mm Junction (Double Socket)	1
	UG100	110mm P Trap	1
	UG101	110 x 160mm Standard Bottle Gully	1
	UG102	100 x 160mm x 100mm Bottle Gully (Rear Inlet)	1
	UG111	110mm Socket Plug	1
	UG111/160	160mm Socket Plug	1
	UG115	160 x 110mm Level Invert Reducer	1
	UG117	110mm Solvent Weld Socket	1
	UG117/160	160mm Solvent Weld Socket	1
	UG1000	320 Manhole Cover	1
	UG1001	450 Manhole Cover	1
	UG1002	320 Raising Piece	1
	UG1003	450 Raising Piece	1
	UG1004	320 Manhole Base	1
	UG1005	450 Manhole Base	1
	UG1007	Riser Seals for 450 Bases	Bag 10
	UG103	Square Hopper	1
	UG104	Rectangular Hopper	1
	UG1010	Ranwater Adapter	1
	UG45	Rest Bend - Single Socket	1
	UG46	Rest Bend - Double Socket	1
	UG1006	Gulley Raising Piece	1
	UG1008	Round to Square Grid Adaptor	1
	UG1009	Plastic to Clay Adaptor	1



## Soil Systems

The Kayflow soil system is the ideal solution for soil and waste drainage in most applications from homes to schools and industrial buildings.

The system has a complete range of profiles and fittings manufactured from PVC-U with its low maintenance and long lifetime benefits.

- Comprehensive range of products and fittings
- High gloss PVC-U for low maintenance
- Lightweight, durable and easy to install
- 10 year guarantee\*
- Compatible with most other UK systems

\* See Kayflow Soil guarantee for details

	Part No.	Description	Pack Qty.	Colour*
	S1/*	Single Socket Pipe 3m	1	BL, GY
	S2/*	Single Socket Pipe 6m	1	BL, GY
	S3/*	90° DS Bend (Double Socket)	10	BL, GY
	S4/*	45° DS Bend (Double Socket)	10	BL, GY
	S5/*	30° DS Bend (Double Socket)	10	BL, GY
	S6/*	15° DS Bend (Double Socket)	10	BL, GY
	S7/*	90° SS Bend (Single Socket)	18	BL, GY
	S8/*	45° SS Bend (Single Socket)	18	BL, GY
	S9/*	30° SS Bend (Single Socket)	18	BL, GY
	S10/*	15° SS Bend (Single Socket)	18	BL, GY
	S11/*	Short Access Bend (Single Socket)	12	BL, GY
	S12/*	90° TS Brance (Triple Socket) Incl Boss	10	BL, GY
	S13/*	45° TS Brance (Triple Socket) NO Boss	10	BL, GY
	S14/*	90° DS Brance (Double Socket) Incl Boss	10	BL, GY
	S15/*	45° DS Brance (Double Socket) NO Boss	10	BL, GY
	S16/*	Coupler	24	BL, GY
	S17/*	Slip/Repair Coupler	24	BL, GY
	S18/*	Access Junction (Double Socket)	10	BL, GY
	S19/*	Access Junction (Triple Socket)	10	BL, GY
	S20/*	End Plug/Cap	1	BL, GY
	S21/*	Cowl	1	BL, GY
	S22/*	Pipe Clip	1	BL, GY

\* Indicate colour required by adding the following codes BL=Black, GY=Grey



FM 09180



**SBP Limited**

Unit D, Stafford Park 7,  
Telford TF3 3BQ.

**Tel: 01952 292511**

Fax: 01952 292025

Email: [info@plaslyne.co.uk](mailto:info@plaslyne.co.uk)

[www.kayflow.co.uk](http://www.kayflow.co.uk)

© Plaslyne - Our policy is one of continuous improvement and we reserve the right to change specification and design at any time without prior notice.

Ref: plyn9505 (Jan 2010)