

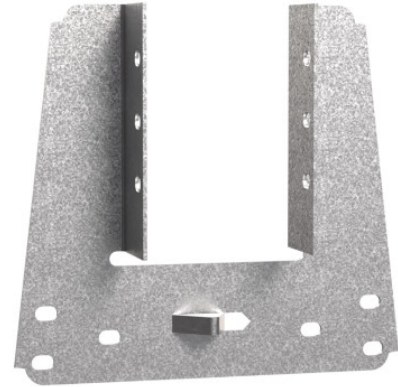
Technical data sheet



TCP Truss Clip

The TCP truss clip attaches girders, trusses and rafters to wall plates to provide wind restraint.

- TCP Truss Clips may be used for general purposes, to resist uplift wherever one member crosses another.
- Speed prong provides temporary attachment for ease of installation.
- Obround holes for easier nail driving.



Features

Features

.

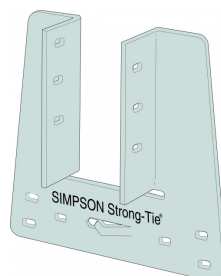
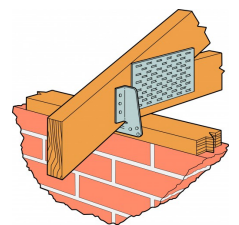
Applications

Material

- Pre-galvanised mild steel

Installation

- Use all specified fasteners



TCP
Truss Clip

Technical Data

TCP

References	Connector Dimensions [mm]					Header Holes	Joist Holes
	A	B	C	D	t	Obround Ø4x6	Obround Ø4x6
TCP38	38	100	18	107	0.9	6	6
TCP47	47	100	23	107	0.9	6	6
TCP50	50	100	26	107	0.9	6	6

Performance Values

References	Fasteners		Characteristic Capacity [kN]	Safe Working Loads [kN]
	Truss	Wall Plate	$R_{2,k}$	R_2 , SWL, Short Term
	Qty	Qty	N3.75x30	N3.75x30
TCP	6	6	3.3	2.1

