



Somerset

COMMERCIAL AND UTILITY SLABS

to BS EN 1339

Our hydraulically pressed paving range is available in a variety of sizes, thicknesses and finishes.

Please refer to the tables for full details of our range, weights and packs.



Somerset



Avon



Chamfered



Blister



Barface



Hazard



Cycleway

X-TEX TEXTURED PAVING



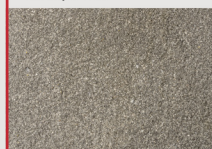
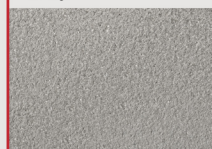
Grey



Buff



Graphite



50MM SLABS

SIZE (mm) nominal	GREY	BUFF	NO. PER TONNE	NO. PER PACK
900x600x50	✓		16	20
750x600x50	✓		19	20
600x600x50	✓	✓	24	20
600x450x50	✓	✓	32	20
450x450x50	✓	✓	42	40
400x400x50	✓		54	40
600x300x50	✓	✓	48	20

CHAMFERED SLABS

SIZE (mm) nominal	GREY	NO. PER TONNE	NO. PER PACK
400x400x65	✓	40	30
400x400x50	✓	54	40

AVON SLABS - UTILITY PAVING

SIZE (mm) nominal	GREY	BUFF	CHARCOAL	NO. PER TONNE	NO. PER PACK
600x600x35	✓	✓	✓	34	28
450x450x32	✓	✓	✓	65	60

SOMERSET SLABS - UTILITY PAVING

SIZE (mm) nominal	GREY	BUFF	NO. PER TONNE	NO. PER PACK
600x600x35	✓	✓	34	28
450x450x32	✓	✓	65	60

BAR FACED PAVING

SIZE (mm) nominal	GREY	BUFF	NO. PER TONNE	NO. PER PACK
600x600x50	✓	✓	24	20

TACTILE AND PATTERNED PAVING

SIZE (mm) nominal	GREY	RED	BUFF	NO. PER TONNE	NO. PER PACK
Blister 400x400x50	✓	✓	✓	54	40
Blister 400x400x65		✓	✓	40	30
Blister 450x450x50	✓	✓	✓	40	40
Hazard 400x400x50	✓	✓	✓	54	40
Cycleway 400x400x50	✓		✓	54	40
Barface 600x600x50	✓		✓	24	20

X-TEX TEXTURED PAVING

SIZE (mm) nominal	NO. PER PACK	APPROX. WEIGHT KG	NO. PER M ²	NO. PER TONNE
600x600x35	25	30	2.8	34
450x450x32	54	15.5	4.9	65