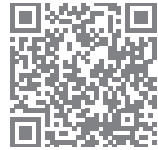


NEW

VillaFix™ paving solutions



✓ Lay ✓ Finish ✓ Protect ✓ Care

Congratulations on your decision to purchase one of our products. The quality of the installation and your pavings longevity, are greatly influenced by the materials used during four key stages.

We are delighted to introduce **VillaFix™ Porcelain and Paving Solutions**, made specifically to help you Lay, Finish, Protect and Care for your new patio.

Protect your new investment with our **VillaFix™ Homeowner Patio Guard** (see page 67). Ask your local stockist for more information.



RAPID BASE MIX 25KG

A rapid setting and ultra-rapid drying cement replacement that creates a fast-track patio base, which can then have porcelain tiles fixed over it using VillaFix™ Porcelain & Stone Adhesive after only 3 days. This innovative, fast track system negates the need to wait for a traditional patio base to dry before tiling. For a base thickness of 40mm at 1 part Rapid Base Mix, 3 parts sharp sand and 2½ parts aggregate.

- ✓ Coverage 2m² approx.
- ✓ Shrinkage Compensated
- ✓ Rapid High Strength Development
- ✓ Excellent Workability
- ✓ Environmentally friendly as 25% less cement used within mix



PORCELAIN & STONE ADHESIVE 15KG

A high-performance polymer modified, single part, highly flexible, rapid setting, non-slip, cement based adhesive, formulated to provide enhanced properties of adhesion to a variety of surfaces on walls and floors in external and internal situations.

- ✓ Coverage 4-7.5m² approx.
- ✓ Rapid bond strength development
- ✓ Excellent initial grab
- ✓ Highly flexible
- ✓ Exceeds requirements of BS/EN 12004 C2FTS1



PORCELAIN & STONE PRIMER 15KG

A highly polymer modified slurry bond coat for use with porcelain tiles and natural stones. Creates an exceptionally strong bond between the paving and bedding mortar. Essential for porcelain and granite. Dramatically reduces the potential of staining and framing from the cement-based bedding mortar.

- ✓ Coverage 15m² approx.
- ✓ Easy to mix & apply
- ✓ Brush application
- ✓ Long working time
- ✓ Exceeds the requirements of BS/EN7533



SBR 5LTR

A professional grade SBR bonding agent and mortar additive formulated especially for the paving industry. Promotes the adhesion of natural stone and concrete paving to bedding mortar whilst also offering excellent freeze thaw resistance. Increases the water resistance and handling characteristics of mortar.

- ✓ 200ml per 1kg of cement
- ✓ Reduces shrinkage & cracking
- ✓ Freeze thaw resistance
- ✓ High solids content over 30%
- ✓ Improves the strength and workability of sand & cement bases and rendering

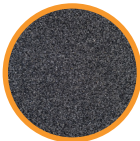


JOINTING COMPOUND 15KG

Ready to use Brush in Patio Jointing Compound - just wet surface thoroughly and brush the material into the joints. Then sweep of excess material, finally washing the paved area with clean water. Left over material can be stored in the tub if completely covered in water.

Not suitable for driveways and porcelain tiles or other impermeable flagstones.

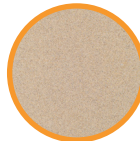
- ✓ Coverage 8-12m² approx.
- ✓ Ready to use - no mixing
- ✓ Strong & flexible
- ✓ Cement & epoxy free
- ✓ Permeable
- ✓ Walk on in 24 hours



Basalt



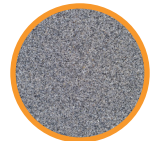
Black



Buff



Granite Sand



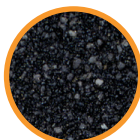
Grey Stone



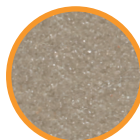
PORCELAIN & STONE GROUT 15KG

A highly polymer modified, flexible and fast setting grout range suitable for use with porcelain tiles and natural stones. Perfect for use on patios and wall cladding as well as on interior walls and floors. It is efflorescence free and offers anti mould properties. It is extremely easy to mix, apply and clean off and offers market leading handling characteristics.

- ✓ Efflorescence free
- ✓ Fast setting and flexible
- ✓ High water resistance
- ✓ Available in 5 colours
- ✓ Easy to mix, apply and clean off



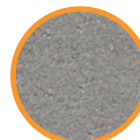
Black



Cappuccino



Cream



Slate Grey



Silver Grey

For coverage please see P27



COLOUR ENHANCING SEALER 5LTR & 1 LTR

Use to protect your stone and enhance its look at the same time. A water-based, breathable high performance sealer and enhancer which deepens and brings out the natural colour of stone, leaving a sheen to the surface. It seals and protects against water penetration and liquid spills. Suitable for all unpolished natural stone.

- ✓ Coverage 8 -16m² per litre
- ✓ Enhances, seals, and protects
- ✓ Single coat application for speed and cost savings
- ✓ Stain resistant
- ✓ Ideal for use on unpolished natural stones



INVISIBLE SEALER 5LTR & 1 LTR

Use to help prevent staining of your stone patio or driveway. A water-based, breathable high performance sealer. This product protects and seals all types of natural stone and concrete paving with minimal change to the original character, ensuring your paving looks the same as when installed. Protecting your paving from stains and spills will help enhance their lifespan, durability, and appearance.

- ✓ Coverage 15-20m² per litre
- ✓ Minimises water penetration
- ✓ Single coat application for speed and cost savings
- ✓ Stain resistant
- ✓ Ideal for use on unpolished natural stones



PORCELAIN GROUT REMOVER 5LTR & 1 LTR

Use to remove grout films. A trade formulation acid-based cleaning solution that helps to remove, grout. Suitable for porcelain.

- ✓ Acid based cleaner
- ✓ Cleans off building site dirt and grime
- ✓ Removes grout residues from porcelain tiles
- ✓ Powerful and effective
- ✓ Porcelain safe

HOMEOWNER PATIO GUARD™

Speak to your local stockist to get your approved maintenance pack



BLACKSPOT & ALGAE REMOVER 5LTR & 1 LTR

Use to remove algae and blackspot (a type of lichen) that often thrive in damp and shaded areas. This is a powerful and easy to use treatment that breaks down and eliminates algae & blackspot growing on walls, patios, decking, fences, roofs, paths, driveways, garden containers and planters. Simply spray on and leave for 24 hours, no scrubbing required. Provides long lasting protection against re-growth.

- ✓ Removes algae & black spot
- ✓ Results in 24 hours
- ✓ Simple to use. 1 ltr with spray applicator
- ✓ Long lasting protection
- ✓ Prevents re-growth



PORCELAIN & STONE CLEANER 5LTR & 1 LTR

Use to keep a patio or driveway looking like new. This advanced formulation quickly removes years of dirt and grime. Apply to the area to be treated to remove everyday dirt and grime and stubborn stains. Suitable for all-natural stone and porcelain tiles. Ideal for all brickwork, walls, masonry, steps, driveways, and patios.

- ✓ Removes everyday dirt and grime
- ✓ Heavy duty cleaner
- ✓ Ideal for patios & driveways, stonework, brick, ornaments & steps
- ✓ 2 in 1 formulation
- ✓ Cleans and prevents re-growth



RUST STAIN REMOVER 5LTR & 1 LTR

A powerful organic formulation designed to break down and remove orange oxide (rust) stains left by iron objects rusting. Suitable for all-natural stone and porcelain paving.

- ✓ Removes rust stains
- ✓ Powerful and effective
- ✓ Organic formulation

