



DRY FIX CONTINUOUS VERGES FOR SLATE

30 YEAR GUARANTEE

The continuous verge range are made up of preformed GRP continuous profiles designed to be used with natural or man-made slates. Designed to fix continuously along the verge with under batten fixing for new projects and face fixing for refurbishment work.

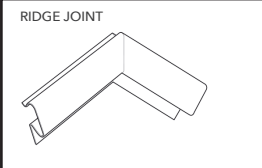
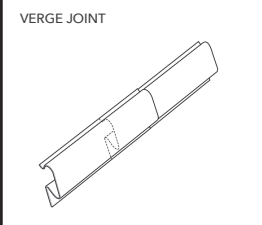
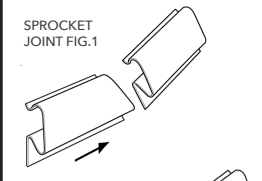
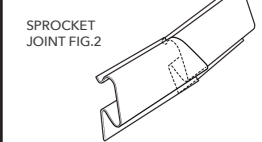
FEATURES AND BENEFITS

- Quick and simple to install
- Thermally stable
- UV and acid rain resistant
- Lead alternative
- Reduced theft risk
- Creates no harmful run off into water courses
- Dry fix products eliminate the mortar installation and maintenance issues

MATERIAL AND COLOUR

GRP and Anthracite

TYPICAL DRY VERGE JOINT DETAILS

 <p>RIDGE JOINT</p>	<p>Ridges</p> <p>The Dry Verges are cut with a vertical mitre and butt jointed. A lead saddle may be fitted under or over the joint if required. The ridge tile should be trimmed if necessary to suit.</p>
 <p>VERGE JOINT</p>	<p>Verge.</p> <p>Where joints in the dry verge are required along the edge of the roof, they should be overlapped with the lower section fitted over/ around the upper section.</p>
 <p>SPROCKET JOINT FIG.1</p>	<p>Sprockets</p> <p>Slight or gentle sprockets can easily be accommodated by cutting the lower section to a slight rake and fitting over the upper or main dry verge section.</p>
 <p>SPROCKET JOINT FIG.2</p>	<p>These jointing methods are suitable for all of the dry verge profiles.</p>

PRODUCT CODES AND SUITABILITY



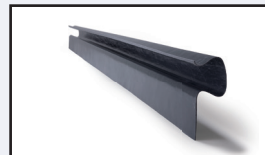
Product code: HDL DV6
Slate gap: 40mm
Length: 3000mm
 Designed to fit underneath the slating battens. Suitable for slate roofs both new and refurbishment work.



Product code: HDL DV7
Slate gap: 16mm
Length: 3000mm
 Designed to fit underneath the roofing underlay and directly on top of the sark boarding in a typical Scottish roof detail.



Product code: HDL DV8
Slate gap: 55mm
Length: 3000mm
 Designed primarily for face fixing as a refurbishment system but can be used on new build if required.

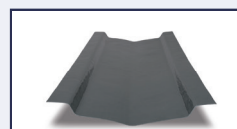


Product code: HDL DV9
Slate gap: 35mm
Length: 3000mm
 Designed primarily as a refurbishment system but can be used on new build if required and where the slates are fixed directly to the sark board roof in typical Scottish slating practice.

RELATED PRODUCTS



SwiftRidge® & SwiftRidge+® Roll Top ridge and Hip System
 An alternative to the traditional lead or zinc roll top ridge and hip systems suitable for slates & plain tiles at pitches of 20° to 50°. Codes: HD SWR & HD SWR+



Open Valley Troughs
 Three different profiles for slate and Scottish slate roofs, manufactured from GRP in Anthracite colour, codes: HDL SVTU, SVT, SSVT



Slate Vent Range
 Manufactured from polypropylene, suitable for batten or sark board fixing, codes: HD SRV5U, SRV10U, SRV10/20, SRV680, ILSRV10/20, ILSRV10/24, ILSRV10/U