



Bradstone

Reconstructed stone walling portfolio

The Bradstone range of walling

An overview

The Bradstone range of walling combines the look and feel of traditional natural stone with the high performance, long life and low maintenance qualities of modern materials.

Suitable for both new build, refurbishment or renovation projects, each range is carefully designed to make detailing and construction as simple and straightforward as possible with a range of sizes and proven building systems that saves time and money onsite. The Bradstone reconstructed walling range is widely accepted by planners for use in sensitive areas, moulds taken from natural stone recreate the subtle textures and characteristics of the virgin material and the wide range of authentic shades match the traditional originals often now unobtainable.

Providing the finished building with that authentic appearance of hand crafted stone.

So if you want your building exterior to have the good looks and lasting performance of natural stone, without the difficulties and premium cost, then the Bradstone range of walling and complementary products are the best choice.

A glance through this literature will showcase our range and diversity of projects across the country we have been the solution. Contact us for more information on how we can add value to your project.

Life™

We introduced Life to help our customers source sustainable solutions under one simple and easy brand.

Each of the solutions that carry the Life logo meet or exceeds at least one of the three benchmarks that we have set in the key areas of carbon reduction, non-primary material content and water treatment or control within a SUDS solution as shown below. The sustainable contribution of each Life solution is clearly and simply quantified for our customers to reference.

For more information on our Life range of solutions, please visit www.aggregate.com/life



04-05

StoneMaster
Smooth and Washed



06-09

Facing Masonry
Textured and Split



10-23

Reconstructed stone walling
Rough Dressed, Traditional, Tooled, Masonry, Square Dressed,
Squared Coursed Rubble and Stone Slips



Why use the Bradstone range of walling solutions?

Technical helpline
T: 01285 646884
www.aggregate.com/walling

03

Masonry faced cavity wall construction is one of the most widely used forms of building methods for new residential construction in the UK. It is understood by builders and tradesmen alike and, when used in conjunction with the latest good practice detailing and guidance for energy efficient buildings, it can be built to more exacting standards than the current Building Regulations.

Recent changes to the Building Regulations, and the introduction of the Code for Sustainable Homes in the UK, aim to improve energy efficiency of new buildings and in turn improve their impact on the environment. Bradstone products have been certified as being from a responsible source, under BES BRE 6001 certification which can further enhance assessment ratings.

When the Bradstone range of walling is used in conjunction with the Masterblock range of internal blockwork, together with high performance insulation products and best practice detailing, the very highest standards can be achieved.

Masonry external walls, when built with a concrete block inner skin, have the benefit of excellent levels of durability, sound resistance (when built in accordance with current robust detailing guidance), inherent fire resistance and the ability to cope with potential flood damage.

The wall can also be detailed to allow good levels of air-tightness to be achieved, thus preventing air leakage through any gaps in the envelope, resulting in the loss of heated air from inside the building.

The incorporation of a concrete block envelope with insulation will also give the wall a degree of thermal mass.

For example, when outside temperatures are fluctuating throughout the day, a large thermal mass within the insulated inner skin portion of a house can serve to "flatten out" the daily temperature fluctuations, since the thermal mass will absorb thermal energy when the surroundings are higher in temperature than the mass, and give thermal energy back into the interior of the house when the surroundings are cooler e.g. during the evening time.

Thermal mass can also now be included within the SAP calculations of the Building Regulations. Please consult our technical team for more details.



Full technical information including coursing options is available in our technical guide, which is available to download from www.aggregate.com/walling

Guide to symbols

We have placed the following symbols on each product page to help you quickly identify the key features of our products.



BREEAM

All Bradstone walling products are rated as 'VERY GOOD' under the BES 6001 Responsible Sourcing accreditation scheme.



Life

Denotes that the product shown meets or exceeds at least one of the three benchmarks which we have set in the key areas of carbon reduction, non-primary material content and water treatment or control within a SUDS solution.



NBS

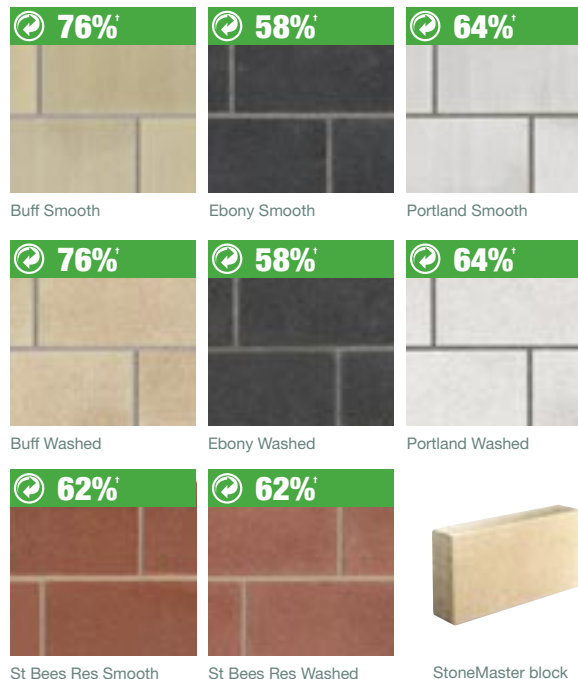
Indicates that National Building Specification details can be supplied with this product.

StoneMaster

Technical data information
www.aggregate.com/stonemaster



nbsPlus



StoneMaster blocks provide a revolutionary walling product with the inherent beauty of indigenous stone, and added benefits including cost effectiveness, and a high recycled content. The range of colours is designed to replicate both regional sandstones and limestones. The product lends itself to both traditional or exciting contemporary architecture, and looks striking when combined with other architectural claddings.

- Perfect for adding value and visual appeal to any commercial or residential building
- Bradstone's unique manufacturing process provides greater than 50% recycled content and greater than 75% secondary aggregate in the face mix units
- Available in two finishes, Smooth for a classic finish, and Washed which exposes the beauty and sparkle of the natural aggregate
- Both finishes are available in a pencil chamfer edge profile
- 90mm on bed, to assist in complying with the manual handling regulations
- Available in four colours, Portland, Buff, St Bees Red, and Ebony
- Through mix units can be ordered for items such as window and door reveals. Cut and bonded Quoin units are also available (restricted faces on washed units)
- Designed to be laid with a 6mm joint
- Cut half blocks are also available upon request.

StoneMaster

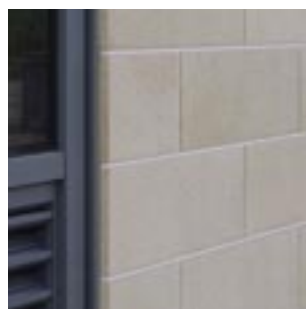
product data

Size (mm)	444 x 219
Thickness (mm)	90
Density (kg/m³)	2050
Weight (kg)	19.0
Units/m² (approx)	9.9
m² per pack	5.4
Pack weight (T)	1.05
Colour	Portland, Buff, St Bees Red, Ebony
Finish	Smooth or Washed



† Represents non-primary material within the complete mix design.

StoneMaster in application



Facing Masonry Textured

Technical data information
www.aggregate.com/facingmasonry



nbsPlus



A lightly shotblasted surface exposes the colour and texture of the natural aggregates used.

- Available in solid and hollow format for ultimate versatility with a standard strength of 10.4 N/mm² in solid format and 7.3 N/mm² in cellular or hollow
- High strength blocks are available in Buff or Grey
- Manufactured from carefully selected aggregates to give both a close texture and a natural colour
- For use internally and externally (solid units only) both above and below dpc.



Buff textured



Grey textured



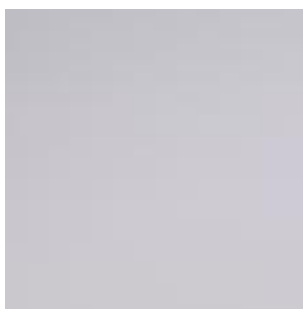
Facing Masonry Textured block

Facing Masonry Textured

product data

Size (mm)	440 x 215	440 x 215	440 x 215	440 x 215	440 x 215	440 x 215
Thickness (mm)	75	100	140	140 Holl	140 Cell	215 Holl
Density (kg/m ³)	1900	1900	1900	1900	1900	1960
Weight	13.7	18.3	25.6	19.8	17.6	25.1
Units/m ²	9.88	9.88	9.88	9.88	9.88	9.88
Colour	Buff/Grey	Buff/Grey	Buff/Grey	Buff/Grey	Buff/Grey	Buff/Grey
Finish	Textured	Textured	Textured	Textured	Textured	Textured

Facing Masonry Textured in application



Facing Masonry Split

Technical data information
www.aggregate.com/facingmasonry



nbsPlus



Reproducing the traditional dressed appearance of natural stone, with a heavier texture to the face than that of the textured block.

- Available as a 100mm solid with a standard strength of 10.4N/mm²
- Manufactured from carefully selected aggregates to give both a close texture and a natural colour
- High strength blocks are available in Buff or Grey
- For use internally and externally both above and below dpc.



Buff split



Grey split



Facing Masonry Split block

Facing Masonry Split

product data

Size (mm)	440 x 215
Thickness (mm)	100
Density (kg/m ³)	1900
Weight	18.3
Units/m ²	9.88
Colour	Buff/Grey
Finish	Split

Facing Masonry Split in application



Rough Dressed

Technical data information

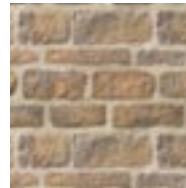
www.aggregate.com/roughdressed

BES 6001
Responsible Sourcing
www.greenbook.co.uk

nbsPlus



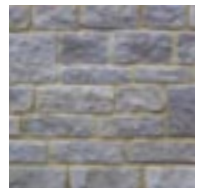
Buff



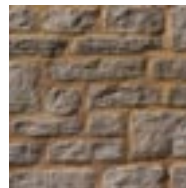
Iron Ham



Southwold



Keinton



Brecon



Silver Grey



Limestone Buff

As its name suggests, Rough Dressed walling is strongly reminiscent of roughly dressed quarried stone. A wide choice of block sizes and shades allows for regional variations in coursing styles and indigenous stone characteristics.

- Replicates roughly dressed natural stone
- Accepted in appropriate conservation areas
- Rationalised sizes are compatible with conventional cavity wall construction and every walling block has a profiled end
- Unique walling block design allows for consistent mortar joint, but when fully pointed the finished wall appears to have a more varied joint width.



Rough Dressed

product data

Course height (mm)	75	100	125	150	225 Jumper	225 Jumper	225 Dressed end	225 Dressed end	225 Soldier course coping unit	Twice weathered coping
Lengths (mm)	200, 225, 250 275, 300, 325	200, 225, 250 275, 300, 325	200, 225, 250 275, 300, 325	200, 225, 250 275, 300, 325	250	337	225	337	450	445L x 150W, 495L x 300W
Walling area m ² per pack	7.09	6.62	7.09	5.67	6.08	6.14	n/a	n/a	n/a	n/a
Run/rise (m)	n/a	n/a	n/a	n/a	n/a	n/a	29.7	20.25	29.7	27, 15
No per pallet	360	252	216	144	108	81	135	90	66	60, 30
Pack weight (T)	1.42	1.33	1.42	1.13	1.22	1.22	1.31	1.36	1.36	-

Walling blocks are supplied in single height/random length packs. All dimensions are coordinated sizes to include allowance for a 10mm joint. All blocks are 100mm on bed. 135° splayed quoins, all internally and externally faced are also available in course heights of 75, 100, 125 and 150mm. Internal lengths of all are 180 + 270mm. External lengths of all are 215 + 310mm.

For full technical details and accessories, please refer to the Rough Dressed technical data sheet on the quick web link stated on the page header.

Rough Dressed in application



Traditional

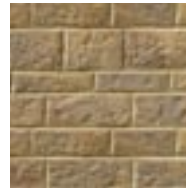
Technical data information
www.aggregate.com/traditional



nbsPlus



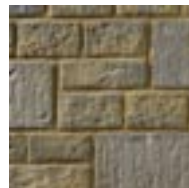
Buff



Iron Ham



Keinton



Weathered Cotswold



Limestone Buff

Traditional walling has a squared and lightly dressed finish and is specified as an alternative to natural stone masonry in many regions. It is also popular in brick and other material areas where it adds distinction and visual appeal to any development. Traditional walling can be laid to course, or random brought to course using jumper blocks.

- Squared, lightly dressed finish, each block features a profiled end
- Distinctive alternative to brick
- Rationalised sizes are compatible with conventional cavity wall construction
- Choice of block sizes for different coursing options.



Walling block



Jumper block



Dressed end



Soldier course/coping unit



Twice weathered coping

Traditional

product data

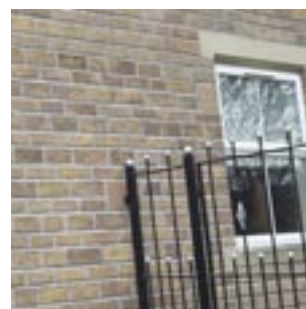
Course height (mm)	75 Walling	100 Walling	125 Walling	150 Walling	225 Jumper block	225 Jumper block	225 Dressed end	225 Dressed end	225 Soldier course coping unit	Twice weathered coping
Lengths (mm)	200, 225, 250, 275, 300, 325	200, 225, 250, 275, 300, 325	200, 225, 250, 275, 300, 325	200, 225, 250, 275, 300, 325	250	337	225	337	450	445L x 150W, 495L x 300W
Walling area m ² /per pack	7.87	7.35	7.87	6.30	6.75	6.82	n/a	n/a	n/a	n/a
Run/rise (m)	n/a	n/a	n/a	n/a	n/a	n/a	29.7	20.25	29.7	27, 15
No per pallet	400	280	240	160	120	90	90	66	66	60, 30
Pack weight (T)	1.34	1.25	1.34	1.07	1.15	1.16	1.00	1.40	1.36	-

Walling blocks are supplied in single height/random length packs. All dimensions are coordinated sizes to include allowance for a 10mm joint. All blocks are 100mm on bed.

Soldier course can be used as coping block.

For full technical details and accessories, please refer to the Traditional technical data sheet on the quick web link stated on the page header.

Traditional in application



Tooled

Technical data information
www.aggregate.com/tooled

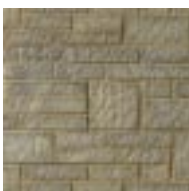


nbsPlus

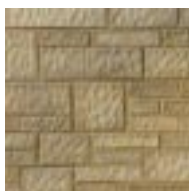


Tooled walling is the original Bradstone walling finish. It was developed to reproduce the look of chiselled stone featuring vertical tool marks. Toolled walling gives the appearance of high quality dressed Ashlar, lending itself to Georgian style architecture or contemporary designs. Toolled walling can also be striking as a string or plinth course with other claddings.

- Perfect for adding value and visual appeal to any commercial or domestic build
- Often used in contemporary new builds across the UK
- Reminiscent of sawn Bath stone perfect for matching across South West England
- Produced in moulds originated from natural stone masters for a high quality aesthetic detail
- Available in two shades.



North Cerney



Buff



Walling block



Twice weathered coping

Tooled

product data

Course height (mm)	76	153	229	Twice weathered coping
Lengths (mm)	229, 305, 458	229, 305, 458	229, 305, 458	445L x 150W 495L x 300W
Walling area m ²	4.53	4.53	4.71	n/a
No per pallet	180 (60 of each)	90 (30 of each)	70 (30, 30, 10)	60, 30
Pack weight (T)	0.95	0.95	1.00	-

Walling blocks supplied in single height/random length packs.

All dimensions are co-ordinated sizes to include allowance for a 10mm joint

All blocks are 100mm on bed.

For full technical details and accessories, please refer to the Tooled technical data sheet on the quick web link stated at the page header.

Tooled in application



Masonry

Technical data information

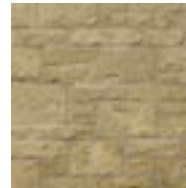
www.aggregate.com/masonryblock



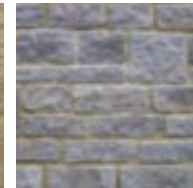
nbsPlus



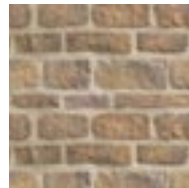
Brecon



Buff



Keinton



Iron Ham



Southwold



Silver Grey



North Cerney



Limestone Buff (made to order)

Masonry Block walling has been developed as a simple and ingenious method of reproducing the appearance of traditional random rubble walling found in natural stone areas. With this walling, the coursing is not apparent, and Masonry blocks are cast in a unique 'T' shape with false joints, so that they appear to be made of individual stones. A single size infill block completes the system.

■ Accepted in appropriate conservation areas and areas of outstanding natural beauty

■ Mortar joints and filled false joints create an effective random coursing pattern

■ Rationalised detailing and construction using only an interlocking 'multi-stone' block and infill block

■ An economic alternative to random rubble masonry.



Walling block



Masonry end



Infill block



Masonry DPC block



Dressed end



Twice weathered coping

Masonry Block

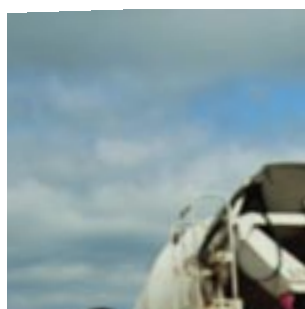
product data

Course height (mm)	225 Walling	150 DPC block	225 Masonry end	225 Masonry end	225 Dressed end	225 Dressed end	225 Soldier course coping unit	Twice weathered coping
Lengths (mm)	450	450	225	337	225	337	450	445L x 150W 495L x 300W
Walling area m ²	7.00	n/a	n/a	n/a	n/a	n/a	n/a	n/a
Run/rise (m)	n/a	45.0	27.0	18.2	29.7	20.25	29.7	27, 15
No per pallet	66 + 45 infills	100	120	81	132	90	66	60, 30
Pack weight (t)	1.38	1.38	1.22	1.19	1.35	1.43	1.31	-

All dimensions are co-ordinated sizes to include allowance for 10mm joint.
All blocks are 100mm on bed.
Soldier course can be used as coping block.

For full technical details and accessories, please refer to the Masonry Block technical data sheet on the quick web link stated on the page header.

Masonry in application



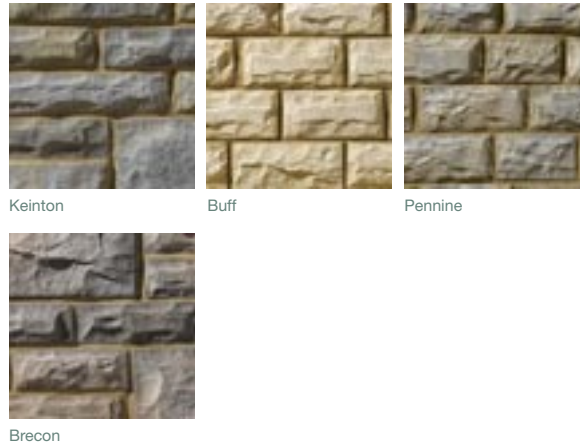
Square Dressed

Technical data information

www.aggregate.com/squaredressed

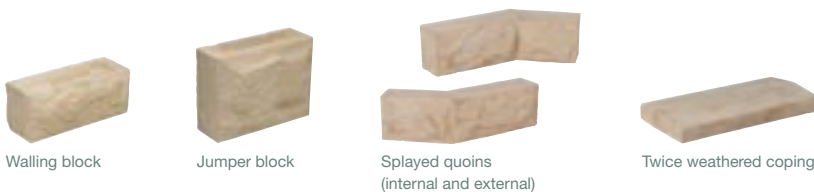


nbsPlus



Square Dressed walling captures the rugged style of quarried dressed walling stone common to many regions. It also offers an interesting alternative to other cladding such as brick or render in non stone localities where it can be used to build whole structures or simply to create a feature. Our variety of sizes enables the product to be laid coursed, brought to course, or random.

- Square dressed finish similar to natural quarried and dressed stone
- Choice of block sizes for different coursing options
- Rationalised sizes are compatible with conventional cavity wall construction
- Range of 225mm blocks for commercial/industrial applications.



Square Dressed

product data

Course height (mm)	75	100	125	150	225 Jumper	225 Jumper	225 Jumper	Twice weathered coping
Lengths (mm)	200, 225, 250, 275, 300, 325	200, 225, 250, 275, 300, 325	200, 225, 250, 275, 300, 325	150, 200, 225, 250, 275, 300, 325, 375, 525	225	300	450	445L x 150W 495L x 300W
Walling area m ² per pack	7.09	7.56	5.91	5.67	6.08	6.08	6.08	n/a
No per pallet	360	288	180	144	120	90	60	60, 30
Pack weight (T)	1.42	1.52	1.18	1.14	1.28	1.30	1.29	-

Walling blocks are supplied in single height/random length packs. All dimensions are coordinated sizes to include allowance for a 10mm joint. All blocks are 100mm on bed. 135° splayed quoins, all internally and externally faced are also available in course heights of 75, 100, 125 and 150mm. Internal lengths of all are 180 + 270mm. External lengths of all are 215 + 310mm.

For full technical details and accessories, please refer to the Square Dressed technical data sheet on the quick web link stated on the page header.

Square Dressed in application



Squared Coursed Rubble

Technical data information

www.aggregate.com/squaredcoursedrubble

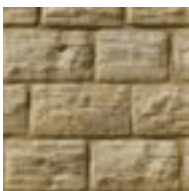


nbsPlus



Squared Coursed Rubble has been developed to faithfully reproduce the classic horizontal stratum lines of natural stone. The product is offered in either large or small course modules to satisfy regional custom and is laid straight. The large block is especially dramatic in appearance but both options are quick, economical and easy to lay.

- Reproduces the horizontal stratum lines of natural stone, often found in northern Britain
- Large and small modules available
- Rationalised sizes are designed for speedy construction with low wastage
- Moulded from natural stone to give a texture close to the original squared coursed rubble.



Buff



Pennine



Walling block



Jumper block



Twice weathered coping

Squared Coursed Rubble

product data

Course height (mm)	75 Small module	100 Small module	125 Small module	150 Small module	125 Large module	150 Large module	175 Large module	225 Jumper blk	225 Jumper blk	Twice weathered
Lengths (mm)	200, 225, 250 275, 300, 325	200, 225, 250 275, 300, 325	200, 225, 250 275, 300, 325	200, 225, 250 275, 300, 325	200, 225, 250 275, 300, 325	200, 225, 250 275, 300, 325	200, 225, 250 275, 300, 325	250	337	445L x 150W 495L x 300W
Walling area m ² /per pack	5.66	7.55	4.72	5.66	4.72	5.66	6.61	6.07	6.14	n/a
No per pallet	288	288	144	144	144	144	144	108	81	60, 30
Pack weight (T)	1.20	1.59	0.99	1.19	0.99	1.19	1.39	1.28	1.25	-

All dimensions are co-ordinated sizes to include allowance for a 10mm joint.
All blocks are 100mm on bed.

For full technical details and accessories, please refer to the Squared Coursed Rubble technical data sheet on the quick web link stated on the page header.

Squared Coursed Rubble in application



Stone Slips

Technical data information
www.aggregate.com/stoneslips



nbsPlus

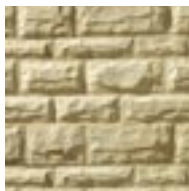


Designed to be economical, cost effective and highly aesthetic, Stone Slips maintain the authentic appearance of natural stone for external and internal applications. Stone Slips are designed to suit modern methods of construction techniques and cladding/slip systems.

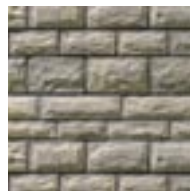
- Very quick and easy to lay
- Thicknesses vary from 20mm at the edge to 30-35mm at the centre for a true stone effect
- Eliminates the manual handling issues associated with traditional stone or brick materials
- Suitable for both internal and external applications.



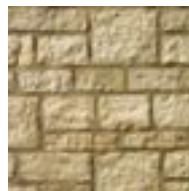
Buff (Traditional)



Buff
(Square dressed finish)



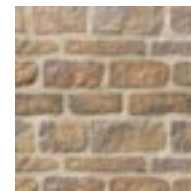
Pennine
(Square dressed finish)



Buff
(Rough dressed finish)



Southwold
(Rough dressed finish)



Iron Ham
(Rough dressed finish)

Stone Slips (traditional)

product data

Course height (mm)	75 Slip	150 Slip	225 Slip
Lengths (mm)	200, 225, 250, 275, 300, 325	200, 225, 250, 275, 300, 325	250, 337
Walling area m ² per pack	4.90	5.30	4.09
No per pallet (based on 525mm units)	114	68	31
Pack weight (T)	0.20	0.26	0.21

(rough dressed)

product data

Course height (mm)	75 Slip	150 Slip	225 Slip
Lengths (mm)	200, 225, 250, 275, 300, 325	200, 225, 250, 275, 300, 325	250, 337
Walling area m ² per pack	4.90	5.30	4.09
No per pallet (based on 525mm units)	114	68	31
Pack weight (T)	0.20	0.26	0.21

(square dressed)

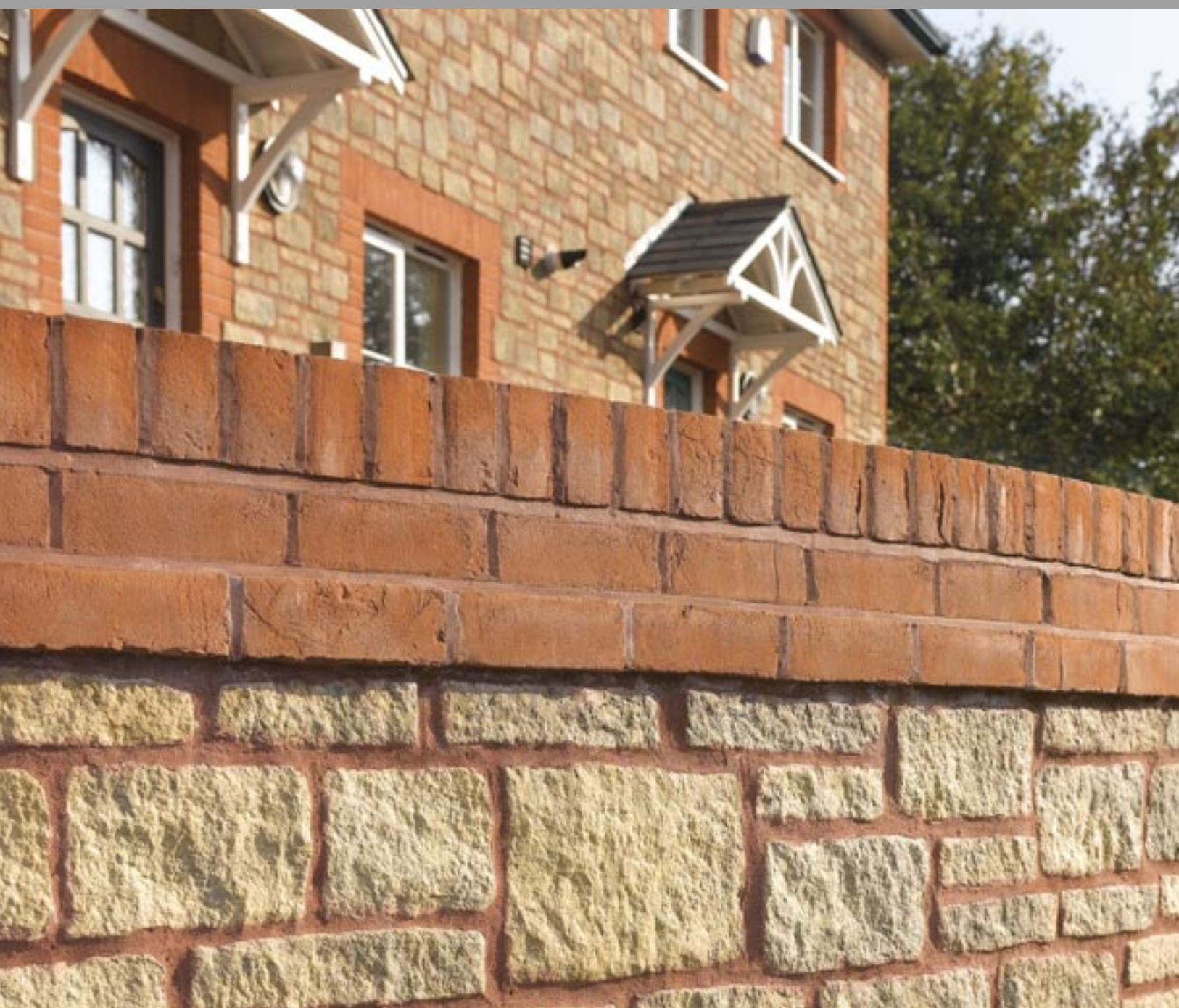
product data

Course height (mm)	75 Slip	150 Slip	225 Slip
Lengths (mm)	200, 225, 250, 275, 300, 325	200, 225, 250, 275, 300, 325	215, 300
Walling area m ² per pack	4.90	5.30	4.09
No per pallet (based on 525mm units)	114	68	31
Pack weight (T)	0.20	0.26	0.21

Stone Slips are supplied in single height/random length packs.
All dimensions are co-ordinated sizes to include allowance for a 10mm joint.
Pistol blocks are available in 75mm, 150mm and 225mm courses on a MTO basis.

For full technical details and accessories, please refer to the Stone Slips technical data sheet on the quick web link stated on the page header.

Stone Slips in application



Case study

De Lacy Fields, Bicester, Oxfordshire

A prestigious housing development calls upon our range of Rough Dressed walling blocks

When David Wilson Homes needed a building material for a major development in the Bicester area, close to Oxford, Aggregate Industries provided the ideal solution.

An outstanding development of three, four and five bedroom homes combining rural and modern living in an enviable location, De Lacy Fields borders the Cotswolds and the developer was looking for a material that would reflect the area's tradition of using stone for housebuilding and complement the Cotswold stone, render and brick.

Rough Dressed walling matched the developer's requirements perfectly. Produced in moulds from original stone masters, the material offers superb aesthetic appeal and visual detail. Moreover, the blocks are produced in rational sizes for ease, speed and flexibility of construction.

Combined with brick to accentuate features, the Rough Dressed walling blocks have been exceptionally well received and the site is now on its third stage.

Client: David Wilson Homes

Contractor: David Wilson Homes

Architect: David Wilson Homes

Materials: Rough Dressed walling



Other ranges available

Technical helpline
T: 01285 646884
www.aggregate.com/walling

25

Bradstone roofing

The continued decline of stone slate quarrying has been followed by an increasing dependence on second-hand slates with a questionable further life expectancy.

Sourcing reclaimed natural stone roofing is becoming increasingly difficult and expensive.

Bradstone roofing is a readily available, highly acceptable reconstructed stone alternative, which retains the essential characteristics of the original natural stone slates from which it is moulded.

For more information on our product range please request a brochure by calling 01285 646884 or emailing building.products@aggregate.com



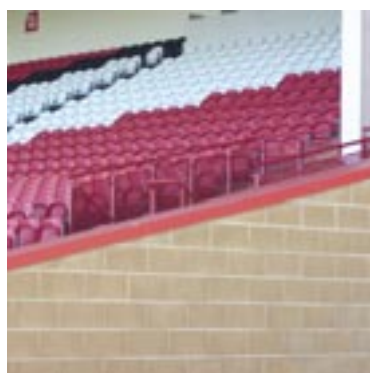
Masterblock fairfaced concrete blocks

Masterblock fairfaced concrete building blocks are designed to have a consistent high quality aesthetic appearance demanded of facing masonry.

Available in either Buff or Grey, the use of carefully selected aggregates gives a close texture with a high degree of colour consistency and a natural colour.

As well as outstanding products, Masterblock offers all the technical support functions that are expected of a major industry force, backed up by the resources and technologies of the Aggregate Industries group of companies.

For more information on our product range please request a brochure by calling 01285 646800 or emailing building.products@aggregate.com



You can obtain technical data sheets using the link from the top of each product page in this brochure and further information about our products and services (including case studies) is available at www.aggregate.com.



CPD

We are able to offer FREE RIBA accredited CPD seminars. We provide a high quality programme which is continually reviewed and updated to give grounding to specifiers on the products, their performance characteristics, and environmental benefits, as well as keeping them up to date with best practice.

1. Design considerations when specifying masonry

Contact us on 01285 646884 for more information or to book.



Technical services

A full range of technical services is available including information on quantities, coursing details, thermal solutions and the product's environmental advantages. We can also help with NBS specifications and give advice on achieving Code for Sustainable Homes levels or BREEAM ratings.

Contact us on 01285 646884.

Efflorescence: Aggregate Industries cannot accept responsibility for the effect of "efflorescence" which can be a characteristic of all building products with a high cement content. The phenomenon may be exhibited by an apparent loss of intensity of colour and the appearance of a milky white bloom on the face of the product. The effect generally disappears with time and is in no way detrimental to the performance of the product.

Colours: We take great care in the photographic accuracy of products shown, however due to variables in both the photographic and printing processes, colours may not exactly match current production. We recommend that clients obtain current production samples in suitable quantities as a general indication of colour before final selection. To minimise colour and texture variation, we recommend that products are ordered from one batch. In manufacturing precast concrete products, variation in colour and texture may arise, and therefore total consistency cannot be guaranteed. The degree of rumbling on block paving products may also vary from product to product and between batches. Multi-coloured products are produced randomly therefore colour proportions in different blocks may vary. Colours may vary slightly between production batches and customers are advised to mix and select product from at least three different packs on site. Natural stone products will feature more colour variation than concrete products.

Product development: Aggregate Industries has a policy of continuous product development and product information is subject to change without notice. All products are manufactured to the appropriate British, (BS) standard or harmonised European standards, (BS EN) wherever possible. If no standard currently exists then Aggregate Industries' own standard is applied. All the products or services shown in this brochure are supplied subject to Aggregate Industries UK Ltd terms and conditions of sale.

Use of information within literature: The designs shown in this literature are illustrative only, and all dimensions are nominal. Every effort is made to ensure the accuracy of all textual and pictorial content in this guide. No charge is levied for this brochure or the advice therein, and accordingly the company, its employees and authorised agents can accept no liability whatsoever, either indirectly or directly arising from the use of its products in connection with any information or advice contained in this guide. It is the responsibility of Clients and Installers to check that installations achieve the appropriate standard. The relevant British or European standard should be referenced at all times.

You can obtain technical data sheets using the link from the top of each product page in this brochure and further information about the Bradstone range, our products and services (including case studies) is available at www.aggregate.com

Aggregate Industries

The complete service



Aggregates

We supply crushed rock, sand and gravel, stone and fill materials for construction. These can be delivered by road, rail or marine transport. We also produce silica and specialist sands.

Tel: 01455 285200

Email: aggregates@aggregate.com



Asphalt

We are a leading supplier of a full range of coated materials with over 40 locations in the UK, serving major conurbations, including sites for collect business.

Tel: 01455 288222

Email: asphalt@aggregate.com



Contracting

We strengthen our construction materials portfolio through our involvement in infrastructure, surfacing and civil contracting works.

Tel: 01530 510066

Email: contracting@aggregate.com



Overseas

Aggregate Industries Overseas supplies high quality aggregates to Europe from bases in the UK, Poland, Germany, Norway and Latvia.

Tel: 01530 512025

Email: overseas.sales@aggregate.com



Commercial landscaping

Flag paving, block paving and kerb products are available in both concrete and natural stone. Surface water drainage products are also part of a wide ranging portfolio.

Tel: 01335 372222

Email: landscaping@aggregate.com

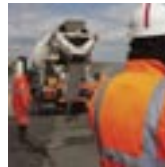


Building products

We produce decorative masonry building blocks, reconstructed stone walling and roofing slates.

Tel: 01285 646884

Email: building.products@aggregate.com



Concrete

We offer a complete range of ready-mixed concretes and screeds, operating from over 70 sites. We also have an operation that caters for smaller collect loads

Tel: 01283 714187

Email: concrete@aggregate.com

North End, Ashton Keynes,
Wiltshire SN6 6QX

Tel: 01285 646884
Fax: 01285 646891

building.products@aggregate.com
www.aggregate.com

