

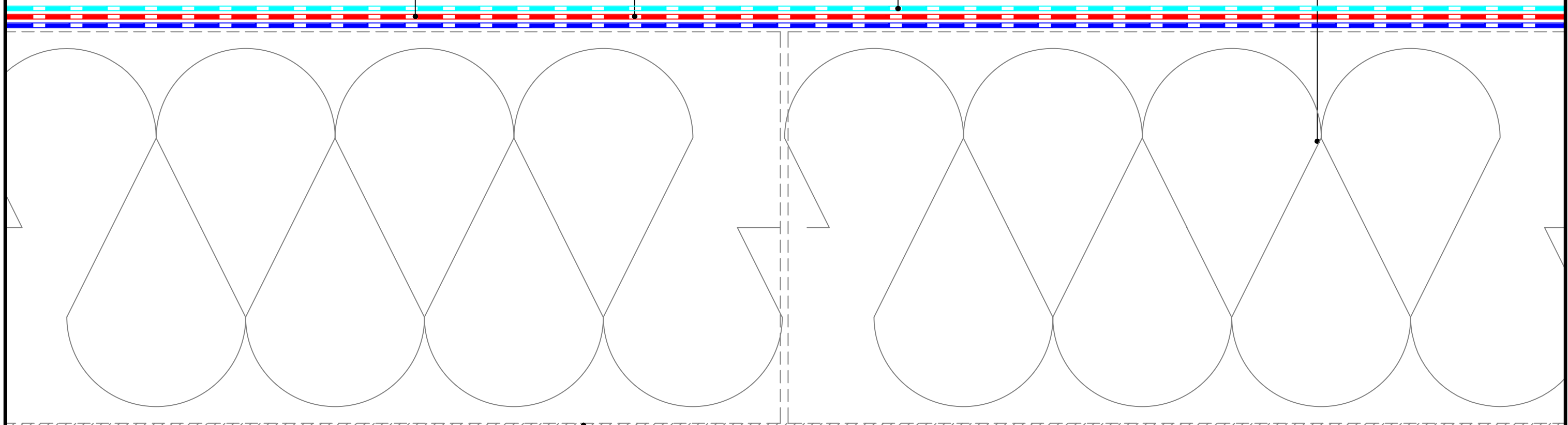
Fatra Fatra Liquid System
Section through metal deck

FF816 Self adhesive
vapour control layer

FLS101 / 102 Primer
(see spec for details)

FLS104 Liquid
waterproofing
(see spec for details)

Foil faced
insulation

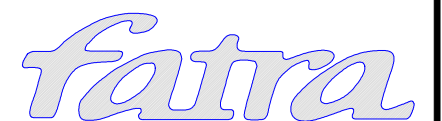


Metal deck

FF816 Self adhesive
vapour control layer

FF867 Insulation
adhesive

FATRA UK LTD.
 UNIT 12
 THE TIMBER YARD
 EAST MOORS ROAD
 OCEAN PARK
 CARDIFF, CF24 5EE



T 029 2048 7954
 F 029 2048 9226

E technical@fatra.co.uk
 W www.fatra.co.uk

**Fatra Liquid System
 SECTION THROUGH METAL DECK**

DATE:
JULY 2017

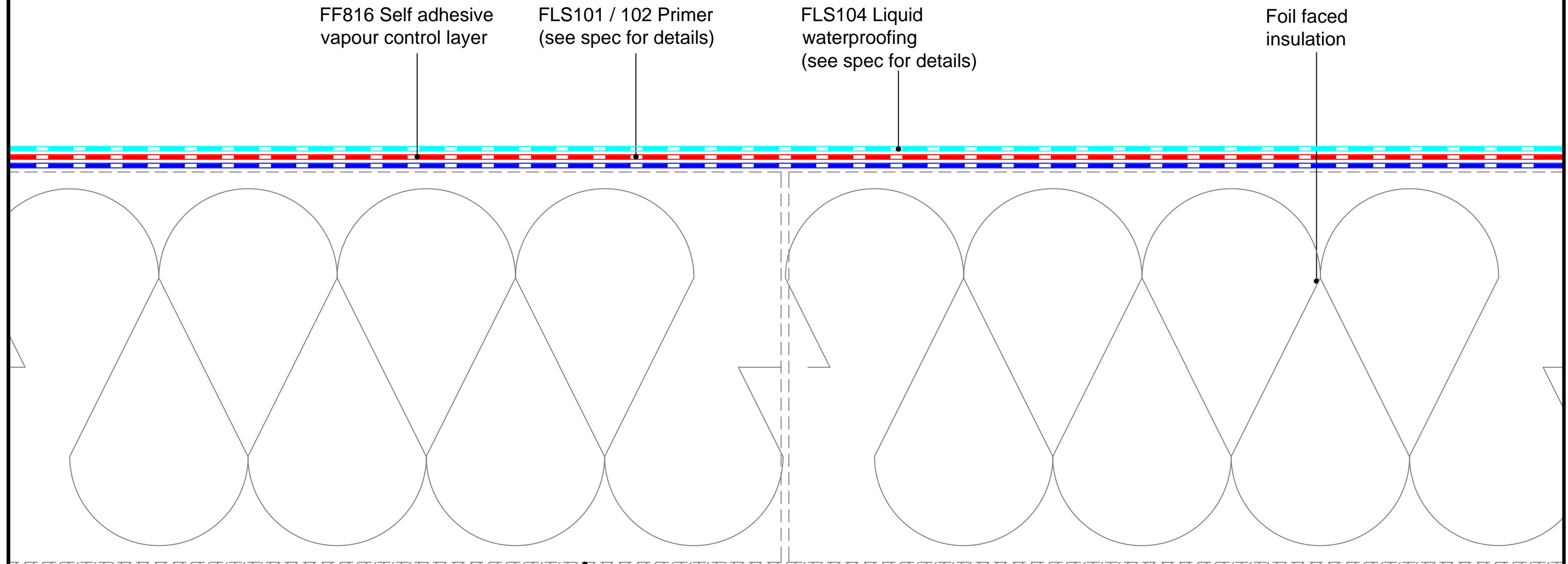
SCALE:
1:1 @ A3

DRAWN:
LB

DRAWING NO:
FATRA LS-01

REVISION:
 -

Fatra Fatra Liquid System
Section through plywood deck



FF816 Self adhesive
vapour control layer

FLS101 / 102 Primer
(see spec for details)

FLS104 Liquid
waterproofing
(see spec for details)

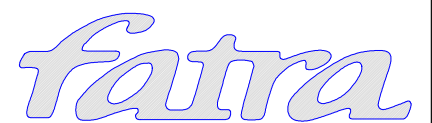
Foil faced
insulation

Timber deck

FF816 Self adhesive
vapour control layer

FF867 Insulation
adhesive

FATRA UK LTD.
 UNIT 12
 THE TIMBER YARD
 EAST MOORS ROAD
 OCEAN PARK
 CARDIFF, CF24 5EE



T 029 2048 7954
 F 029 2048 9226

E technical@fatra.co.uk
 W www.fatra.co.uk

Fatra Liquid System
SECTION THROUGH PLYWOOD DECK

DATE:
JULY 2017

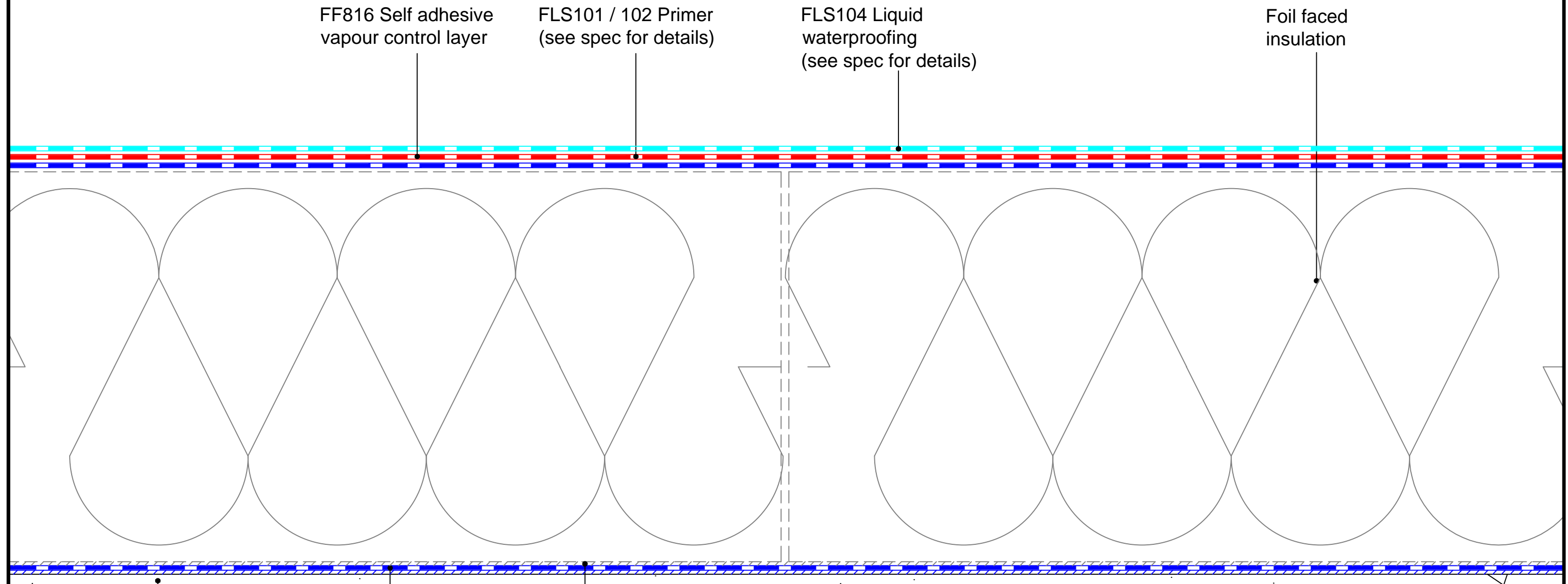
SCALE:
1:1 @ A3

DRAWN:
LB

DRAWING NO:
FATRA LS-02

REVISION:
 -

Fatra Fatra Liquid System
Section through concrete deck



FF816 Self adhesive vapour control layer

FLS101 / 102 Primer (see spec for details)

FLS104 Liquid waterproofing (see spec for details)


Foil faced insulation

Metal deck

FF816 Self adhesive vapour control layer

FF867 Insulation adhesive

FATRA UK LTD.
 UNIT 12
 THE TIMBER YARD
 EAST MOORS ROAD
 OCEAN PARK
 CARDIFF, CF24 5EE

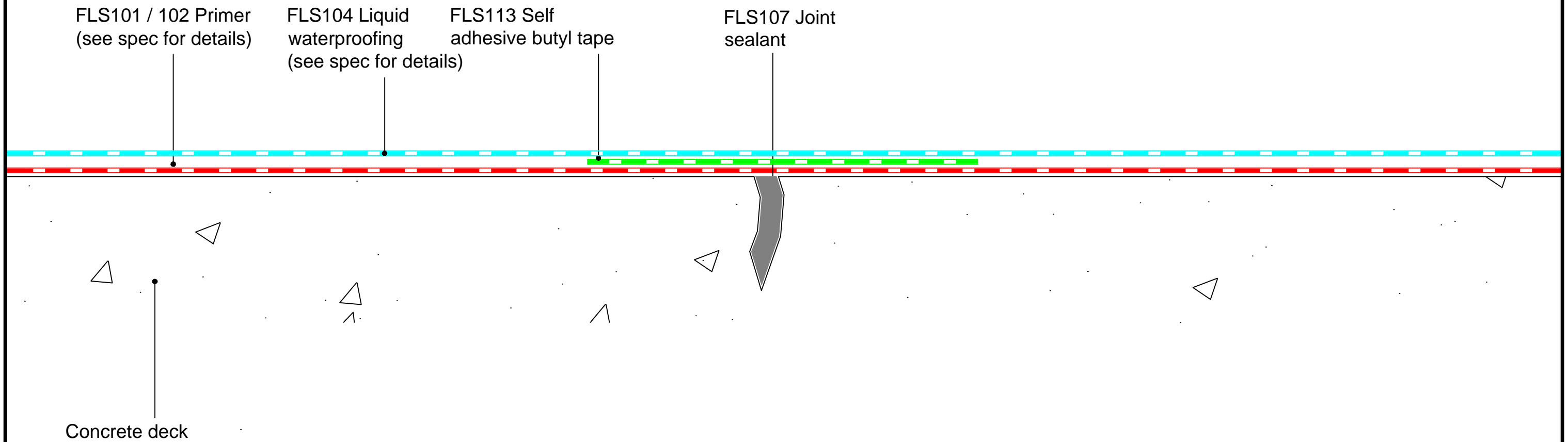


T 029 2048 7954 E technical@fatra.co.uk
 F 029 2048 9226 W www.fatra.co.uk

Fatra Liquid System
SECTION THROUGH CONCRETE DECK

| | | |
|-----------------------------------|---------------------------|---------------------|
| DATE: JULY 2017 | SCALE: 1:1 @ A3 | DRAWN: LB |
| DRAWING NO: FATRA LS-03 | | REVISION: - |

Fatra Fatra Liquid System
Section through cracked concrete deck



| | | | |
|--|---------------------------|--|---|
| FATRA UK LTD. UNIT 12 THE TIMBER YARD EAST MOORS ROAD OCEAN PARK CARDIFF, CF24 5EE | | |  |
| T 029 2048 7954 F 029 2048 9226 | | E technical@fatra.co.uk W www.fatra.co.uk | |
| Fatra Liquid System SECTION THROUGH CRACKED CONCRETE DECK | | | |
| DATE: JULY 2017 | SCALE: 1:1 @ A3 | DRAWN: LB | |
| DRAWING NO: FATRA LS-04 | | | REVISION: - |

**Fatra Fatra Liquid System
Parapet detail**

FLS103 PVC Primer

FLS104 Liquid waterproofing
(see spec for details)

FLS101 / 102 Primer
(see spec for details)

Fatra FF885
fascia drip trim

FLS101 / 102 Primer
(see spec for details)

FLS113 Self adhesive butyl tape

Composite wall
panel / render

FLS104 Liquid waterproofing (see spec for details)
with added FLS106 Thickening agent

FLS104 Liquid waterproofing
(see spec for details)

FLS101 / 102 Primer
(see spec for details)

FLS113 Self adhesive butyl tape

FATRA UK LTD.
UNIT 12
THE TIMBER YARD
EAST MOORS ROAD
OCEAN PARK
CARDIFF, CF24 5EE



T 029 2048 7954
F 029 2048 9226

E technical@fatra.co.uk
W www.fatra.co.uk

**Fatra Liquid System
PARAPET**

DATE:
JULY 2017

SCALE:
1:2 @ A3

DRAWN:
LB

DRAWING NO:
FATRA LS-05

REVISION:
-

**Fatra Fatra Liquid System
Parapet handrail detail**

FLS103 PVC Primer

FLS104 Liquid waterproofing
(see spec for details)

FLS101 / 102 Primer
(see spec for details)

Fatra FF885
fascia drip trim

FLS101 / 102 Primer
(see spec for details)

FLS113 Self adhesive butyl tape

FLS105 Detailing liquid

FLS101 / 102 Primer
(see spec for details)

Composite wall
panel / render

FLS105 Detailing liquid

FLS104 Liquid waterproofing (see spec for details)
with added FLS106 Thickening agent

FLS104 Liquid waterproofing
(see spec for details)

FLS101 / 102 Primer
(see spec for details)

FLS113 Self adhesive butyl tape

FATRA UK LTD.
UNIT 12
THE TIMBER YARD
EAST MOORS ROAD
OCEAN PARK
CARDIFF, CF24 5EE



T 029 2048 7954

E technical@fatra.co.uk

F 029 2048 9226

W www.fatra.co.uk

**Fatra Liquid System
PARAPET HANDRAIL**

DATE:
JULY 2017

SCALE:
1:2 @ A3

DRAWN:
LB

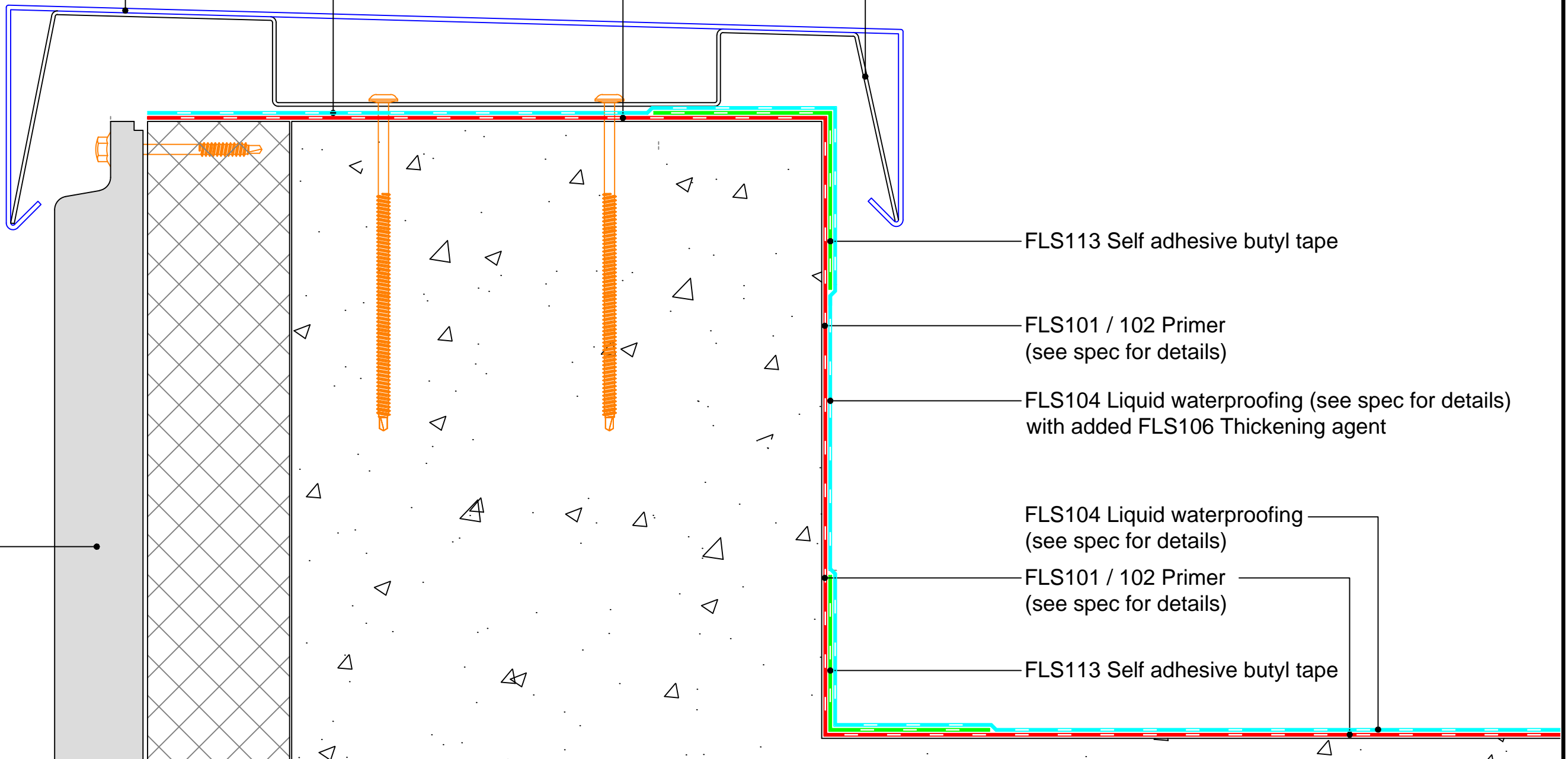
DRAWING NO:
FATRA LS-06

REVISION:
-

**Fatra Fatra Liquid System
Parapet coping detail**

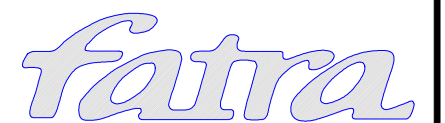
Coping by others FLS104 Liquid waterproofing (see spec for details) FLS101 / 102 Primer (see spec for details) Steel bracket by others

Composite wall panel / render



FLS113 Self adhesive butyl tape
 FLS101 / 102 Primer (see spec for details)
 FLS104 Liquid waterproofing (see spec for details) with added FLS106 Thickening agent
 FLS104 Liquid waterproofing (see spec for details)
 FLS101 / 102 Primer (see spec for details)
 FLS113 Self adhesive butyl tape

FATRA UK LTD.
 UNIT 12
 THE TIMBER YARD
 EAST MOORS ROAD
 OCEAN PARK
 CARDIFF, CF24 5EE

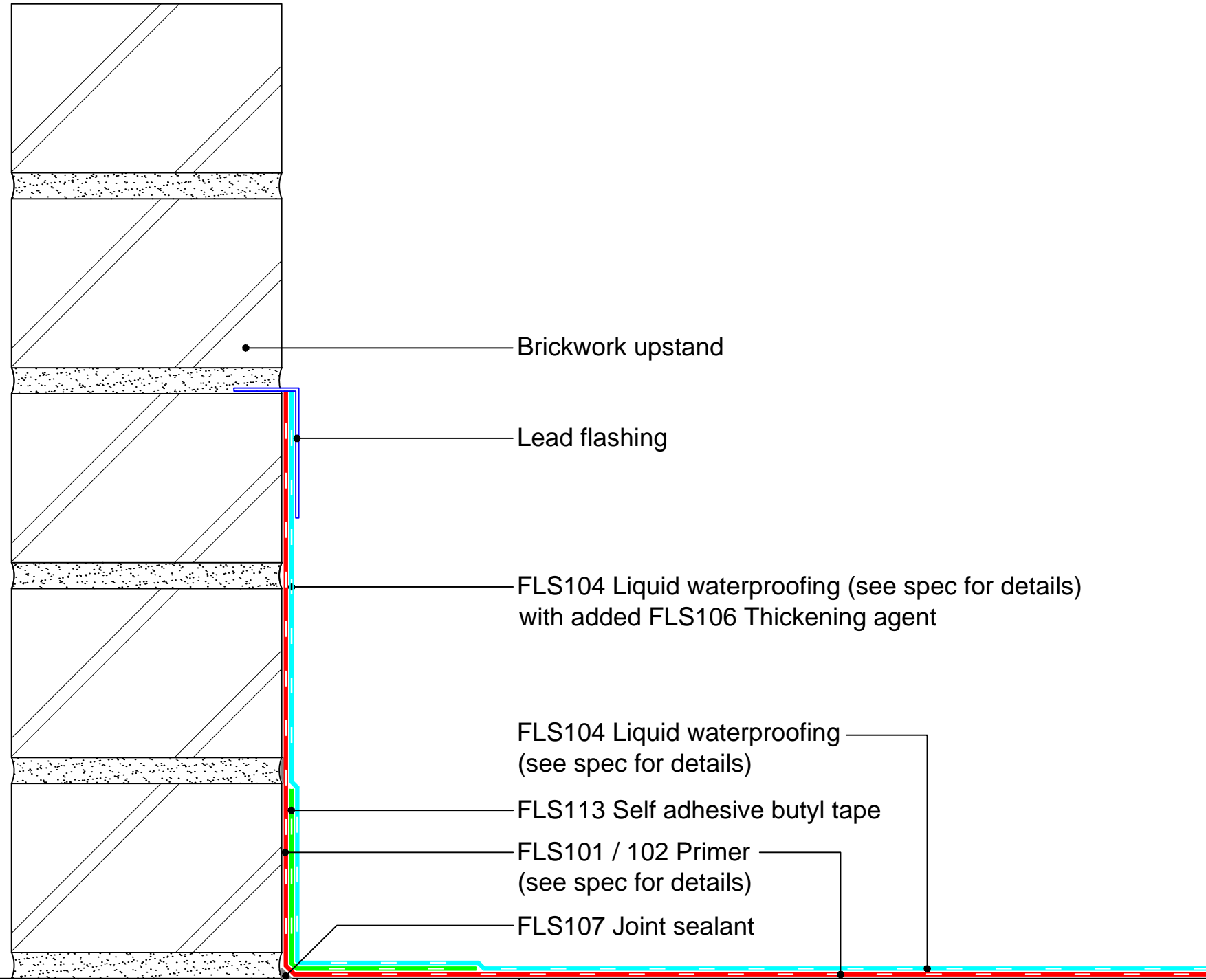


T 029 2048 7954 E technical@fatra.co.uk
 F 029 2048 9226 W www.fatra.co.uk

**Fatra Liquid System
PARAPET COPING**

| | | |
|-----------------------------------|---------------------------|---------------------|
| DATE: JULY 2017 | SCALE: 1:2 @ A3 | DRAWN: LB |
| DRAWING NO: FATRA LS-07 | | REVISION: - |

Fatra Fatra Liquid System
Brick upstand detail



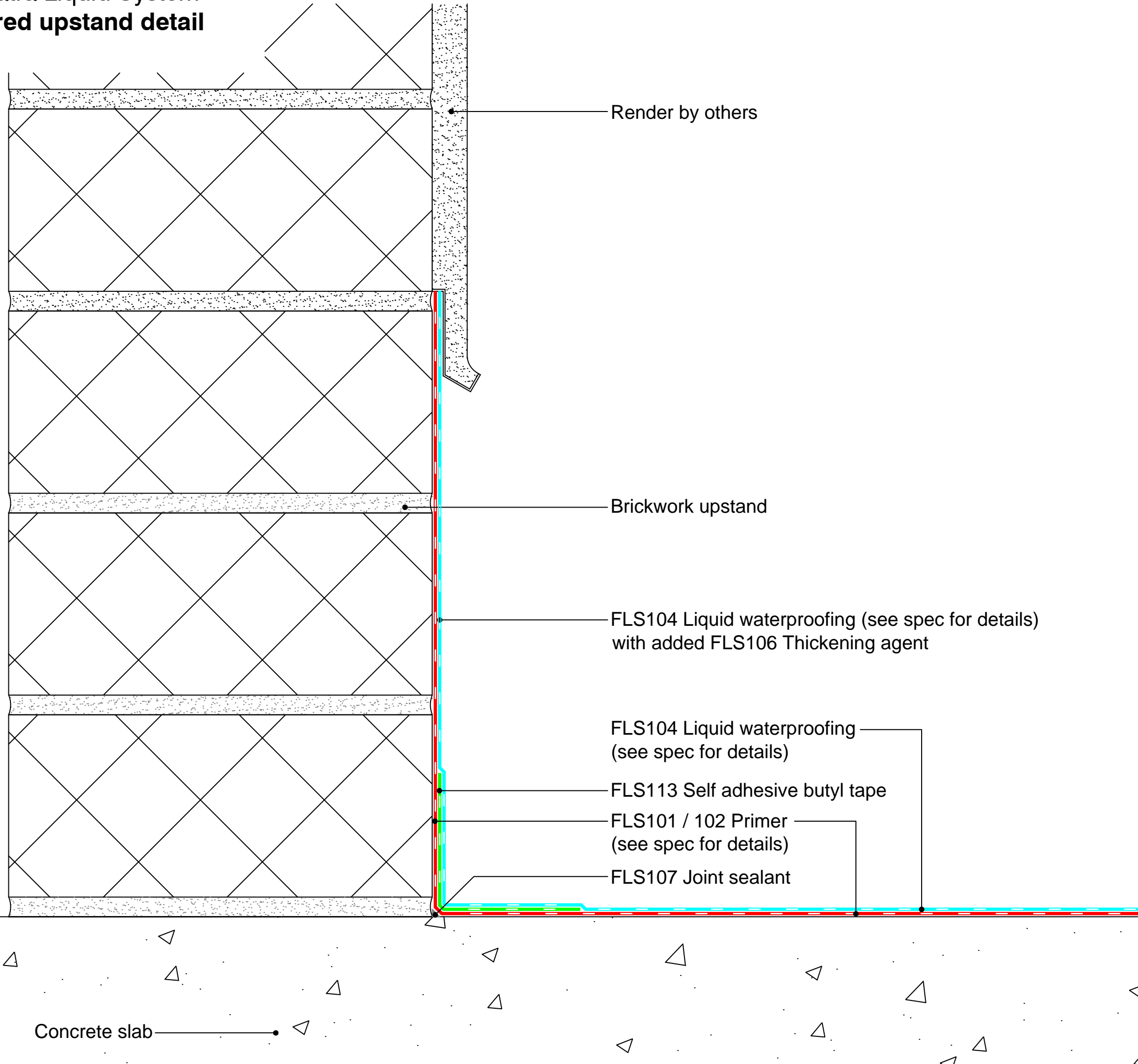
FATRA UK LTD.
 UNIT 12
 THE TIMBER YARD
 EAST MOORS ROAD
 OCEAN PARK
 CARDIFF, CF24 5EE

fatra

T 029 2048 7954 E technical@fatra.co.uk
 F 029 2048 9226 W www.fatra.co.uk

| | | |
|--|---------------------------|---------------------|
| Fatra Liquid System BRICK PARAPET | | |
| DATE: JULY 2017 | SCALE: 1:2 @ A3 | DRAWN: LB |
| DRAWING NO: FATRA LS-08 | | REVISION: - |

Fatra Fatra Liquid System
Rendered upstand detail



Render by others

Brickwork upstand

FLS104 Liquid waterproofing (see spec for details)
 with added FLS106 Thickening agent

FLS104 Liquid waterproofing
 (see spec for details)

FLS113 Self adhesive butyl tape

FLS101 / 102 Primer
 (see spec for details)

FLS107 Joint sealant

Concrete slab

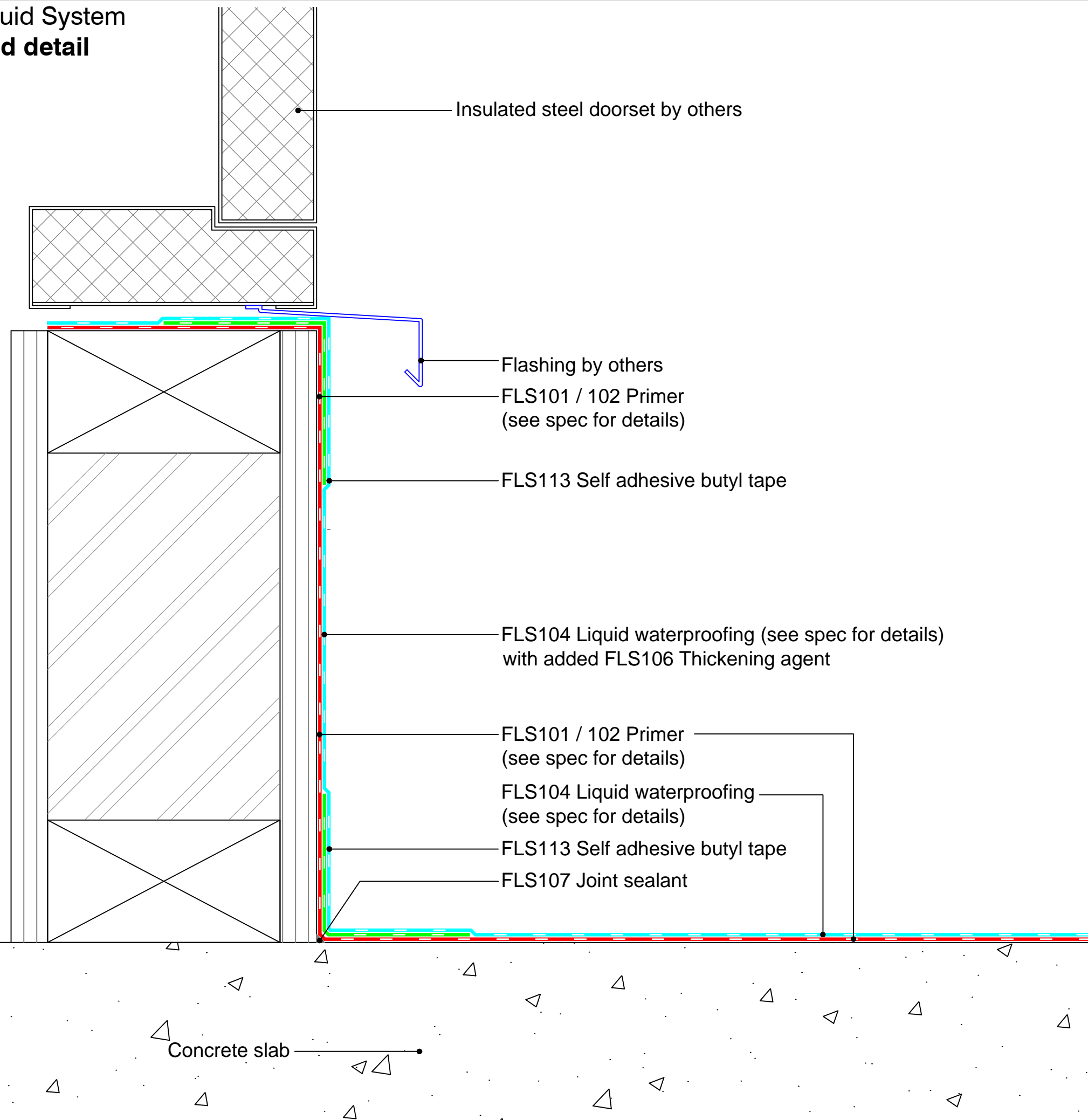
FATRA UK LTD.
 UNIT 12
 THE TIMBER YARD
 EAST MOORS ROAD
 OCEAN PARK
 CARDIFF, CF24 5EE

fatra

T 029 2048 7954 E technical@fatra.co.uk
 F 029 2048 9226 W www.fatra.co.uk

| | | |
|--|---------------------------|---------------------|
| Fatra Liquid System RENDERED UPSTAND | | |
| DATE: JULY 2017 | SCALE: 1:2 @ A3 | DRAWN: LB |
| DRAWING NO: FATRA LS-09 | | REVISION: - |

**Fatra Fatra Liquid System
Door threshold detail**



Insulated steel doorset by others

Flashing by others

FLS101 / 102 Primer
(see spec for details)

FLS113 Self adhesive butyl tape

FLS104 Liquid waterproofing (see spec for details)
with added FLS106 Thickening agent

FLS101 / 102 Primer
(see spec for details)

FLS104 Liquid waterproofing
(see spec for details)

FLS113 Self adhesive butyl tape

FLS107 Joint sealant

Concrete slab

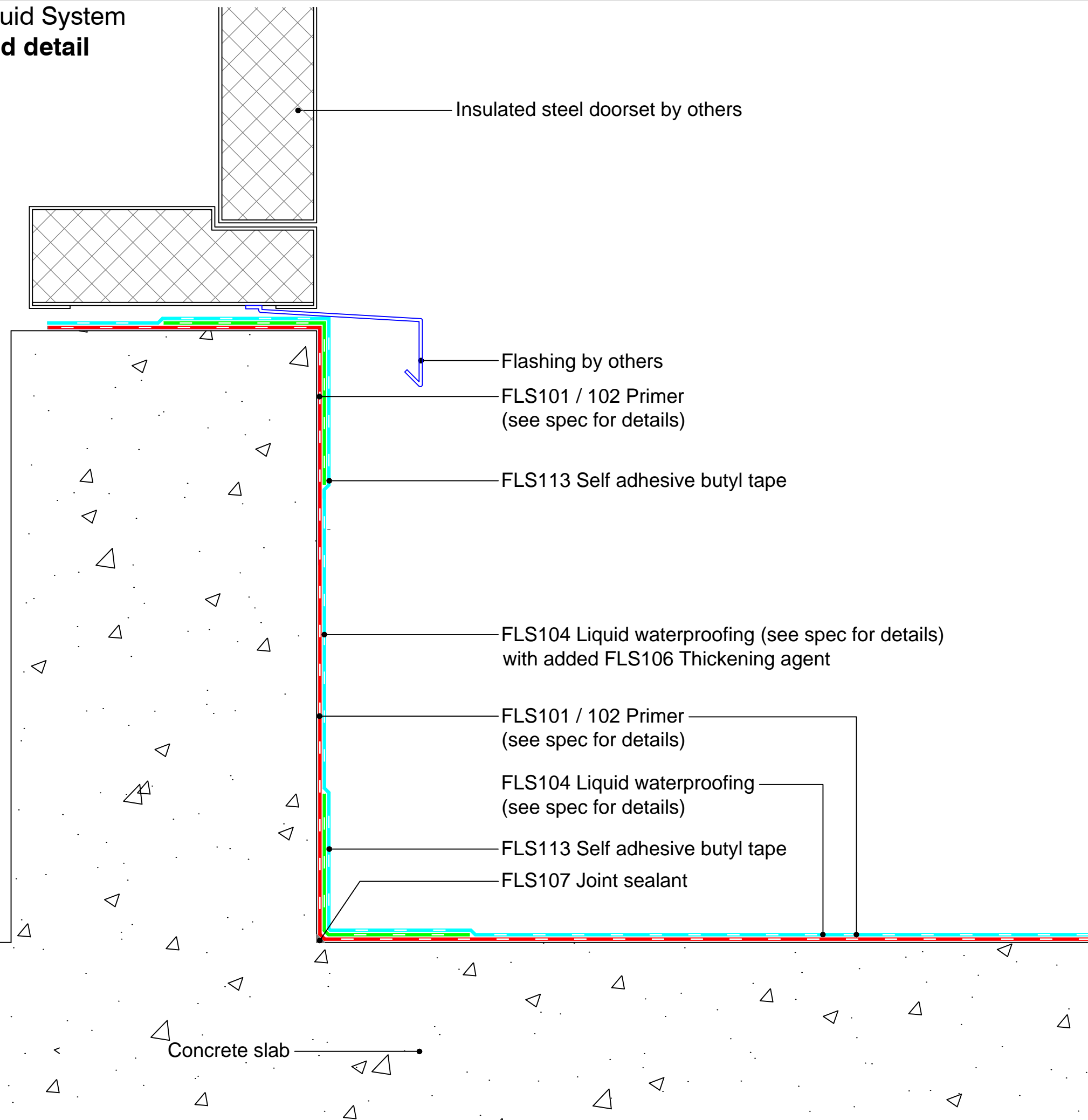
FATRA UK LTD.
UNIT 12
THE TIMBER YARD
EAST MOORS ROAD
OCEAN PARK
CARDIFF, CF24 5EE

fatra

T 029 2048 7954 E technical@fatra.co.uk
F 029 2048 9226 W www.fatra.co.uk

| | | |
|--|---------------------------|---------------------|
| Fatra Liquid System DOOR THRESHOLD DETAIL | | |
| DATE: JULY 2017 | SCALE: 1:2 @ A3 | DRAWN: LB |
| DRAWING NO: FATRA LS-10 | | REVISION: - |

Fatra Fatra Liquid System
Door threshold detail
(concrete)



Insulated steel doorset by others

Flashing by others

FLS101 / 102 Primer
 (see spec for details)

FLS113 Self adhesive butyl tape

FLS104 Liquid waterproofing (see spec for details)
 with added FLS106 Thickening agent

FLS101 / 102 Primer
 (see spec for details)

FLS104 Liquid waterproofing
 (see spec for details)

FLS113 Self adhesive butyl tape

FLS107 Joint sealant

Concrete slab

FATRA UK LTD.
 UNIT 12
 THE TIMBER YARD
 EAST MOORS ROAD
 OCEAN PARK
 CARDIFF, CF24 5EE

fatra

T 029 2048 7954 E technical@fatra.co.uk
 F 029 2048 9226 W www.fatra.co.uk

Fatra Liquid System
DOOR THRESHOLD (CONCRETE)

| | | |
|-----------------------------------|---------------------------|---------------------|
| DATE: JULY 2017 | SCALE: 1:2 @ A3 | DRAWN: LB |
| DRAWING NO: FATRA LS-11 | | REVISION: - |

Fatra Liquid System
Step / change of height detail

FLS104 Liquid waterproofing (see spec for details)
 with added FLS106 Thickening agent

FLS101 / 102 Primer
 (see spec for details)

FLS113 Self adhesive butyl tape

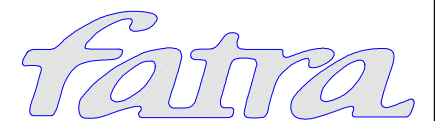
FLS104 Liquid waterproofing
 (see spec for details) with added
 FLS106 Thickening agent

FLS101 / 102 Primer
 (see spec for details)

FLS104 Liquid waterproofing
 (see spec for details)

FLS113 Self adhesive butyl tape

FATRA UK LTD.
 UNIT 12
 THE TIMBER YARD
 EAST MOORS ROAD
 OCEAN PARK
 CARDIFF, CF24 5EE

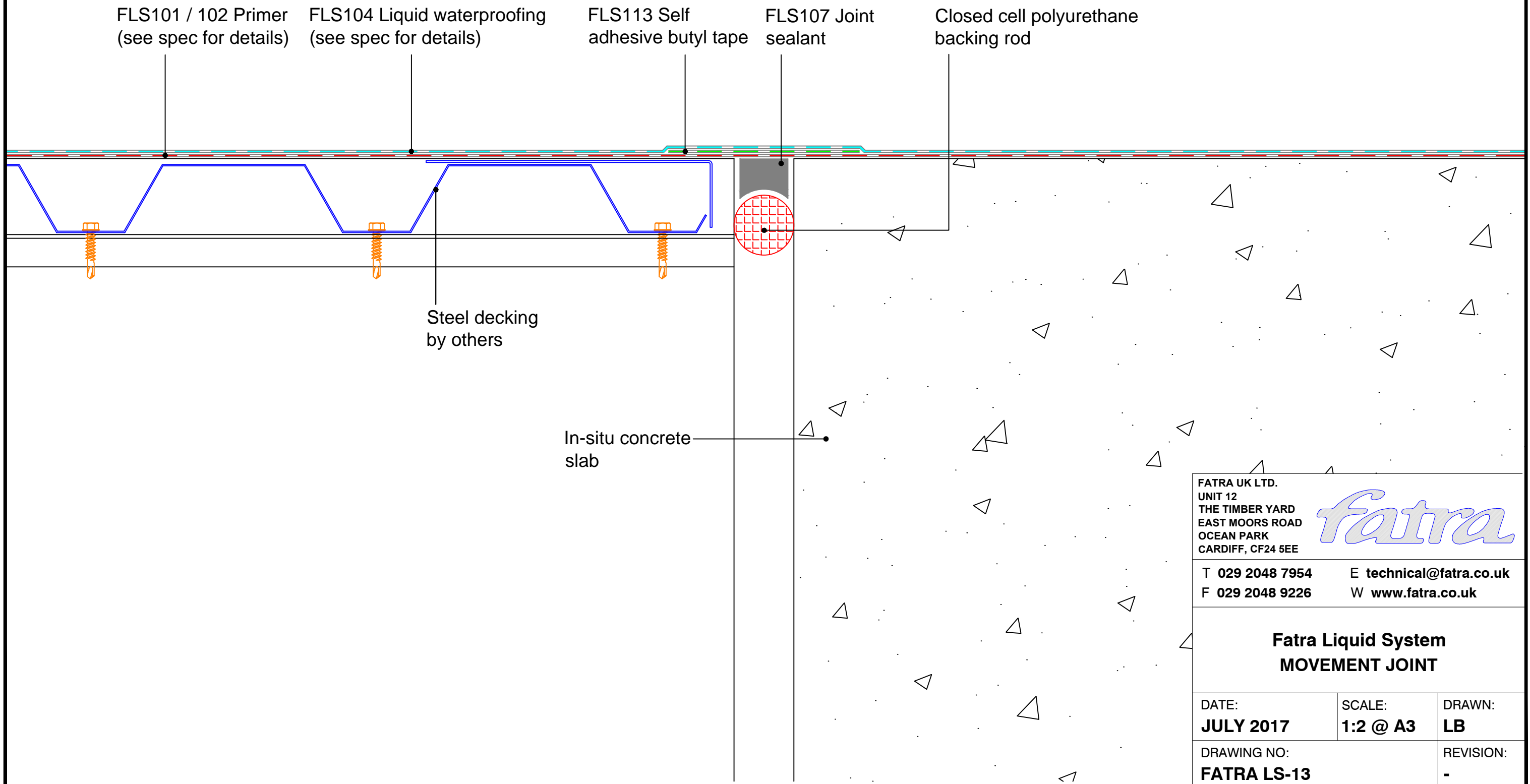


T 029 2048 7954 E technical@fatra.co.uk
 F 029 2048 9226 W www.fatra.co.uk

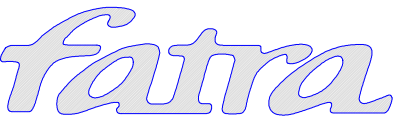
**Fatra Liquid System
 STEP/CHANGE OF HEIGHT**

| | | |
|-----------------------------------|---------------------------|---------------------|
| DATE: JULY 2017 | SCALE: 1:2 @ A3 | DRAWN: LB |
| DRAWING NO: FATRA LS-12 | | REVISION: - |

Fatra Liquid System
Movement joint detail



FATRA UK LTD.
 UNIT 12
 THE TIMBER YARD
 EAST MOORS ROAD
 OCEAN PARK
 CARDIFF, CF24 5EE

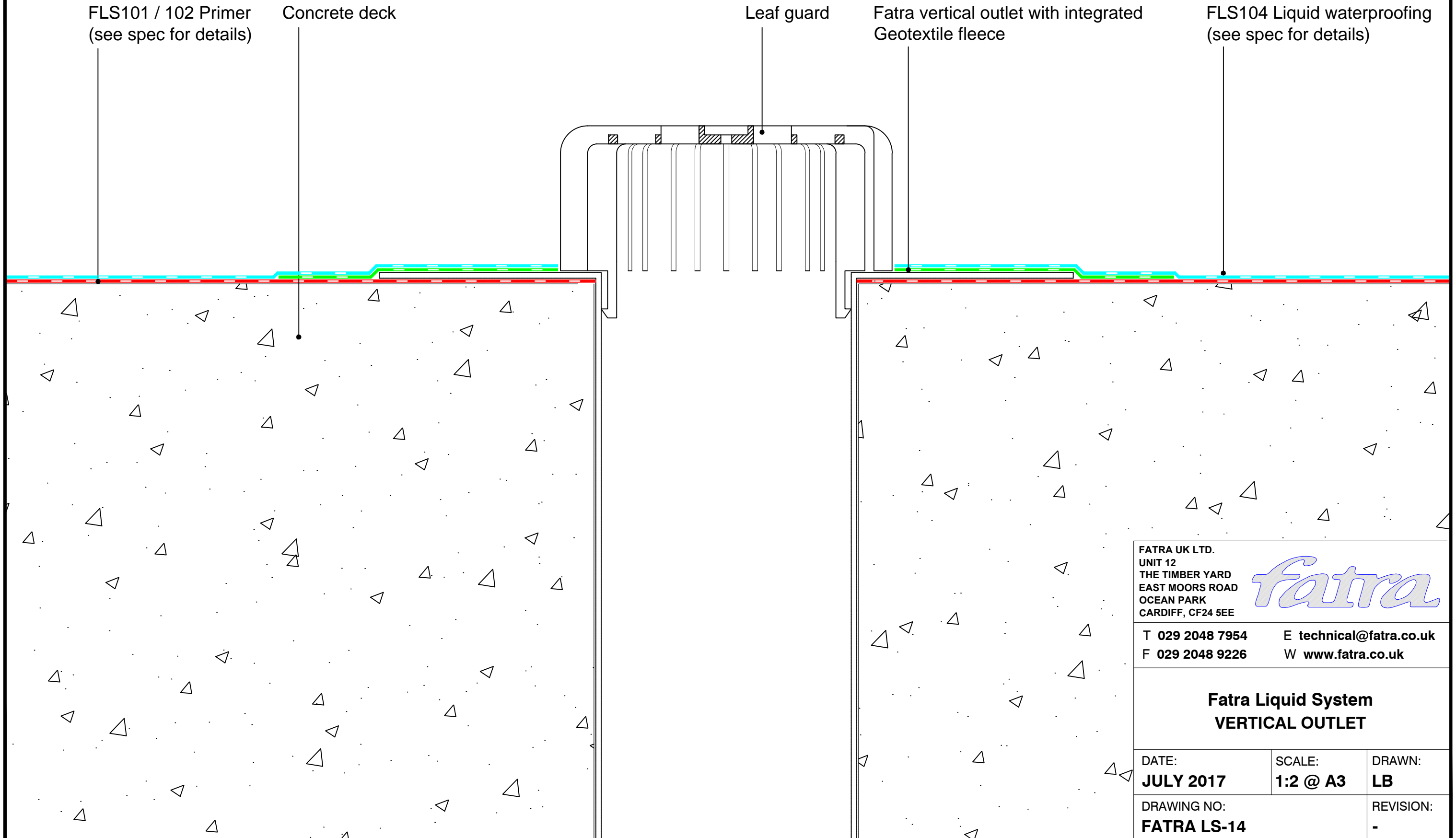


T 029 2048 7954 E technical@fatra.co.uk
 F 029 2048 9226 W www.fatra.co.uk

**Fatra Liquid System
 MOVEMENT JOINT**

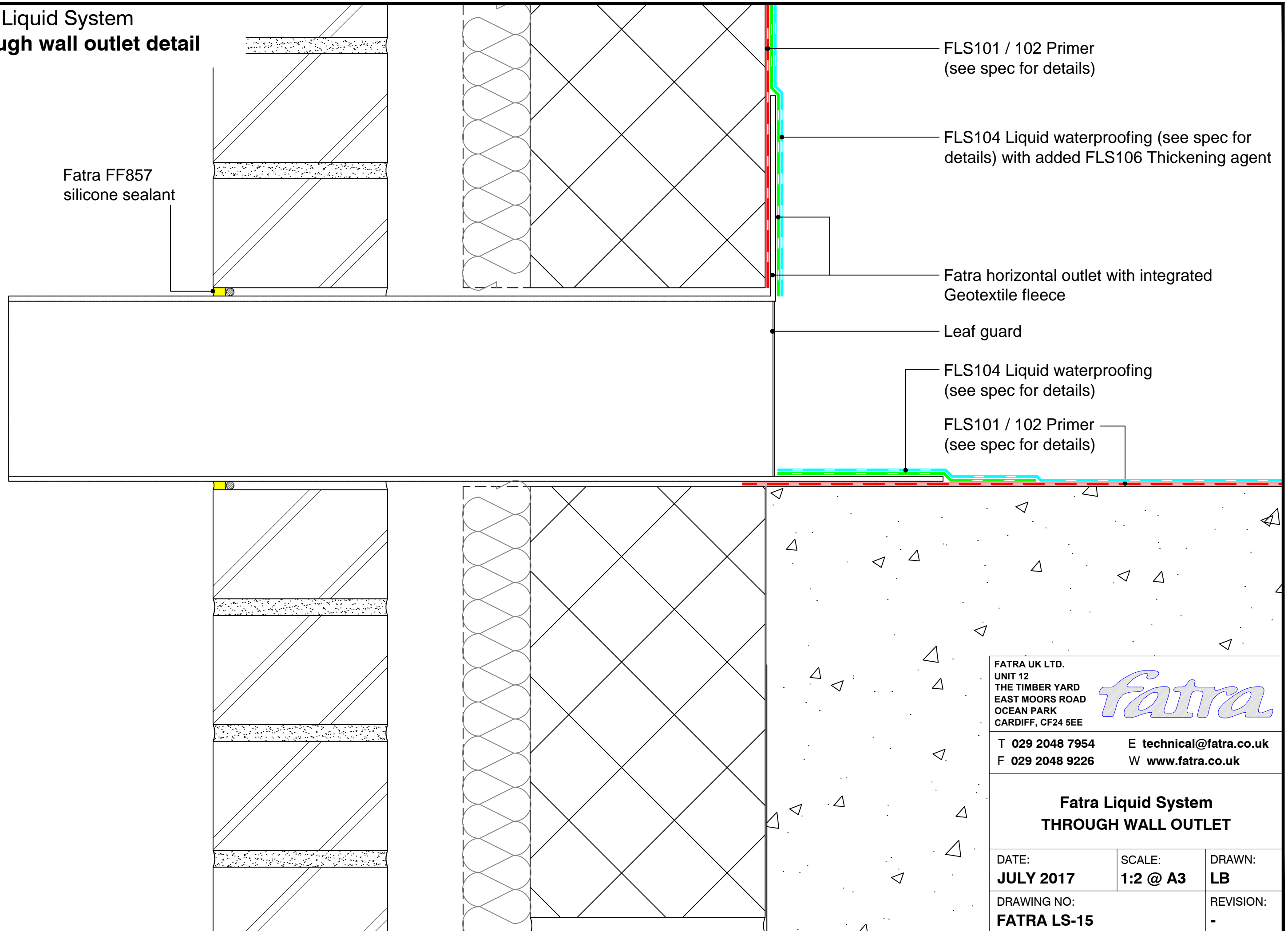
| | | |
|-----------------------------------|---------------------------|---------------------|
| DATE: JULY 2017 | SCALE: 1:2 @ A3 | DRAWN: LB |
| DRAWING NO: FATRA LS-13 | | REVISION: - |

Fatra Liquid System
Vertical outlet detail



| | | |
|---|--|---|
| FATRA UK LTD. UNIT 12 THE TIMBER YARD EAST MOORS ROAD OCEAN PARK CARDIFF, CF24 5EE | |  |
| T 029 2048 7954 F 029 2048 9226 | E technical@fatra.co.uk W www.fatra.co.uk | |
| Fatra Liquid System VERTICAL OUTLET | | |
| DATE: JULY 2017 | SCALE: 1:2 @ A3 | DRAWN: LB |
| DRAWING NO: FATRA LS-14 | | REVISION: - |

**Fatra Liquid System
Through wall outlet detail**



Fatra FF857
silicone sealant

FLS101 / 102 Primer
(see spec for details)

FLS104 Liquid waterproofing (see spec for details)
with added FLS106 Thickening agent

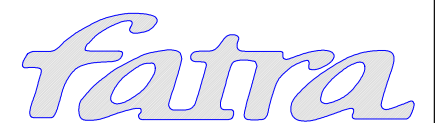
Fatra horizontal outlet with integrated
Geotextile fleece

Leaf guard

FLS104 Liquid waterproofing
(see spec for details)

FLS101 / 102 Primer
(see spec for details)

FATRA UK LTD.
UNIT 12
THE TIMBER YARD
EAST MOORS ROAD
OCEAN PARK
CARDIFF, CF24 5EE



T 029 2048 7954
F 029 2048 9226

E technical@fatra.co.uk
W www.fatra.co.uk

**Fatra Liquid System
THROUGH WALL OUTLET**

DATE:
JULY 2017

SCALE:
1:2 @ A3

DRAWN:
LB

DRAWING NO:
FATRA LS-15

REVISION:
-

**Fatra Liquid System
Overflow detail**

Fatra FF857
silicone sealant

FLS101 / 102 Primer
(see spec for details)

FLS104 Liquid waterproofing (see spec for details)
with added FLS106 Thickening agent

Fatra horizontal outlet with integrated
Geotextile fleece

Leaf guard

FLS104 Liquid waterproofing (see spec for details)
with added FLS106 Thickening agent

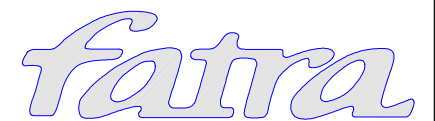
FLS101 / 102 Primer
(see spec for details)

FLS104 Liquid waterproofing
(see spec for details)

FLS113 Self adhesive butyl tape

FLS107 Joint sealant

FATRA UK LTD.
UNIT 12
THE TIMBER YARD
EAST MOORS ROAD
OCEAN PARK
CARDIFF, CF24 5EE



T 029 2048 7954

E technical@fatra.co.uk

F 029 2048 9226

W www.fatra.co.uk

**Fatra Liquid System
OVERFLOW DETAIL**

DATE:
JULY 2017

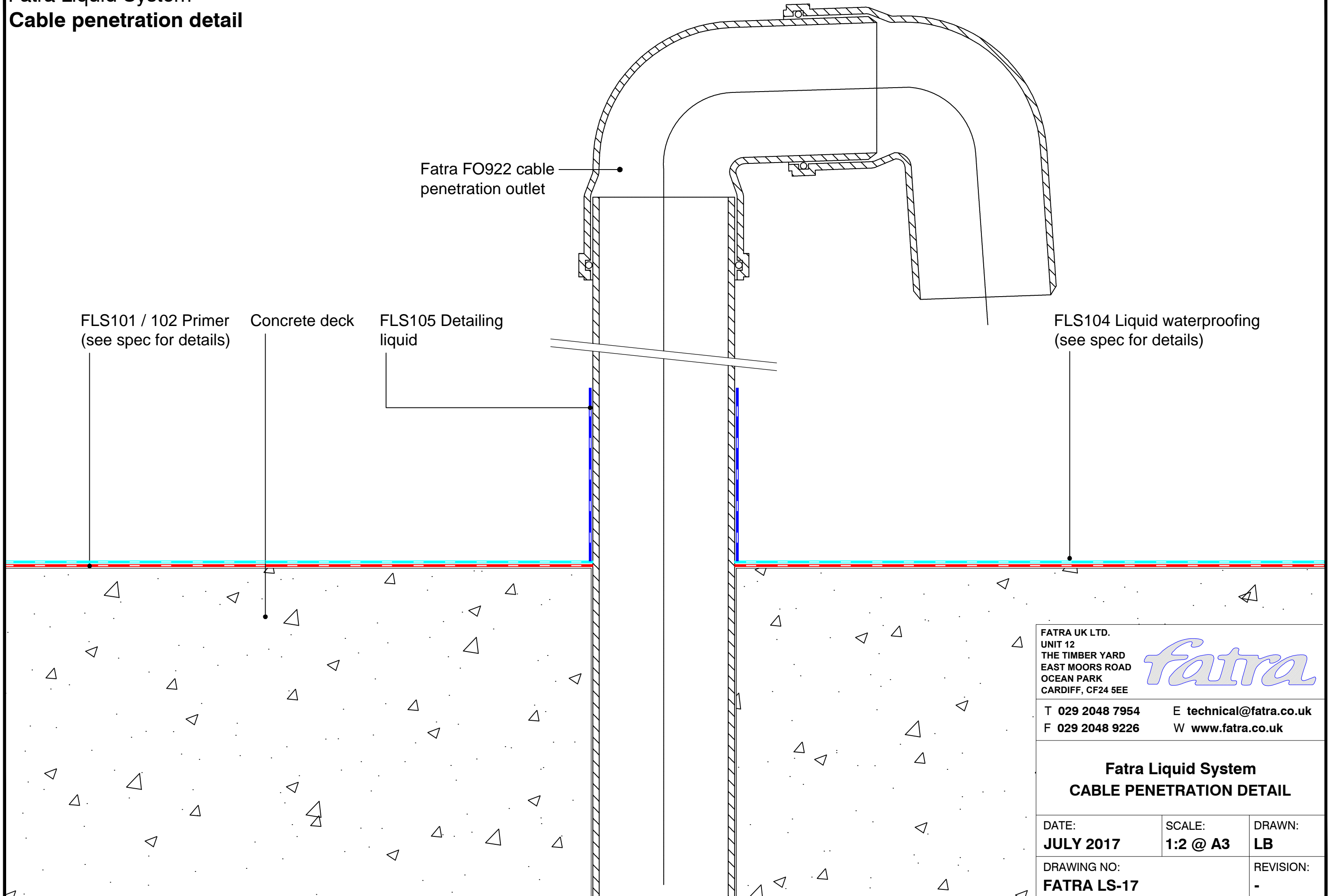
SCALE:
1:2 @ A3

DRAWN:
LB

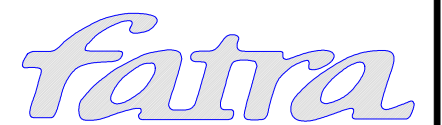
DRAWING NO:
FATRA LS-16

REVISION:
-

Fatra Liquid System
Cable penetration detail



FATRA UK LTD.
 UNIT 12
 THE TIMBER YARD
 EAST MOORS ROAD
 OCEAN PARK
 CARDIFF, CF24 5EE



T 029 2048 7954 E technical@fatra.co.uk
 F 029 2048 9226 W www.fatra.co.uk

**Fatra Liquid System
 CABLE PENETRATION DETAIL**

| | | |
|-----------------------------------|---------------------------|---------------------|
| DATE: JULY 2017 | SCALE: 1:2 @ A3 | DRAWN: LB |
| DRAWING NO: FATRA LS-17 | | REVISION: - |

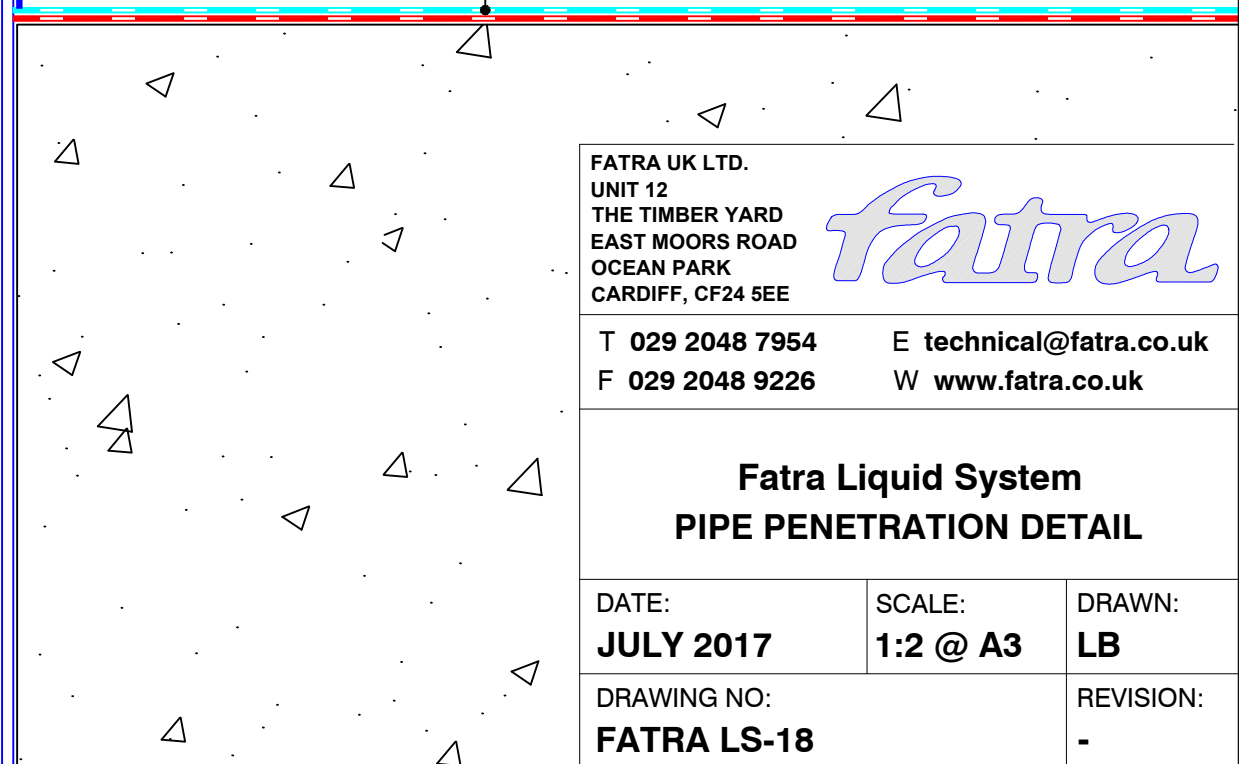
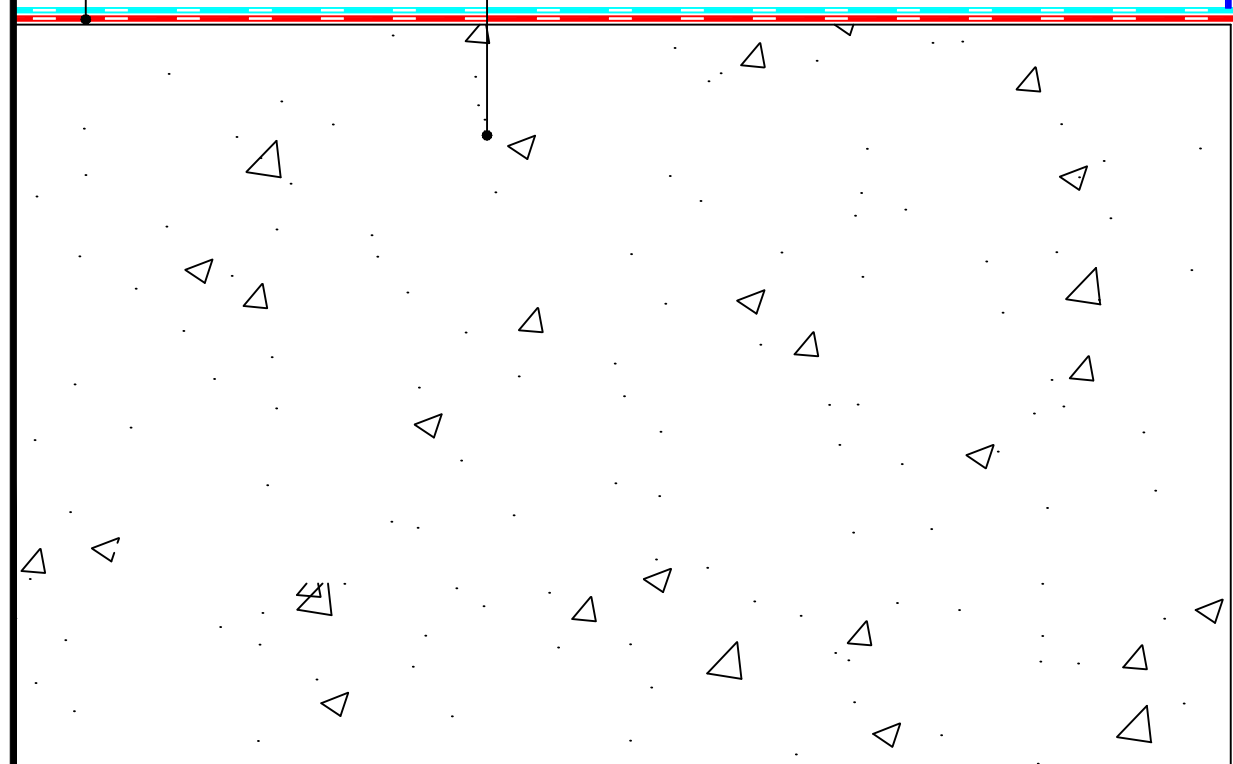
Fatra Liquid System
Pipe penetration detail

FLS101 / 102 Primer
 (see spec for details)

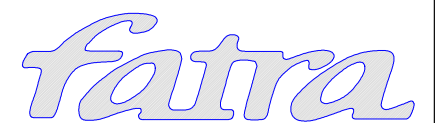
Concrete deck

FLS105 Detailing
 liquid

FLS104 Liquid waterproofing
 (see spec for details)



FATRA UK LTD.
 UNIT 12
 THE TIMBER YARD
 EAST MOORS ROAD
 OCEAN PARK
 CARDIFF, CF24 5EE



T 029 2048 7954
 F 029 2048 9226

E technical@fatra.co.uk
 W www.fatra.co.uk

**Fatra Liquid System
 PIPE PENETRATION DETAIL**

DATE:
JULY 2017

SCALE:
1:2 @ A3

DRAWN:
LB

DRAWING NO:
FATRA LS-18

REVISION:
 -