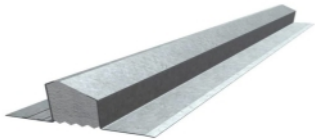
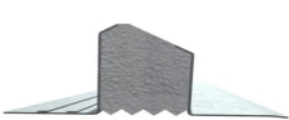




ST90

GALLERY



Length	750-1050	1200-1350	1500-1650	1800-2100	2250-2400
--------	----------	-----------	-----------	-----------	-----------

PRODUCT INFORMATION

ST90 | Thermally Broken Lintel

Supatherm Standard Duty Cavity Wall Lintel Cavity Size: 90-105mm Not suitable for point loads or concrete floors **Features**

- Up to 80% reduction in heat loss compared with standard cavity wall lintels
- Contributes to meeting Part L Building Regulations and the Future Homes Standard
- Options suit all types of masonry and wall construction
- Avoids propping associated with single leaf lintels

[here](#)

Psi	0.098-0.057	0.053-0.048	0.043-0.039	0.06-0.052	0.048-0.043
Value*W/m					
K					

(L) Load SWL/UDL value (W) Weight (H) Height

PRODUCT ATTRIBUTES

Brand	Supatherm
Generic Ref	ST90
Product Range	Supatherm Lintels