

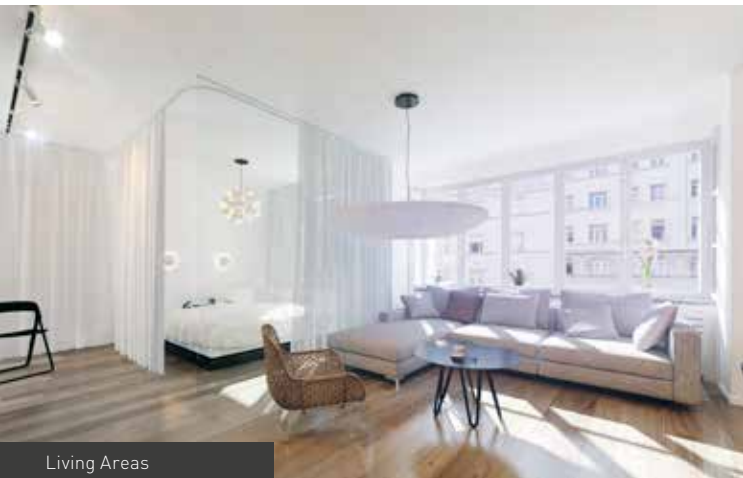
fermacell

Dry lining solutions

The quick guide for your home

fermacell





Living Areas



Kitchens



Kitchens



Bathrooms

Imagine a building board versatile enough to be used virtually anywhere.

Using a multi-purpose board that eliminates unnecessary wet trades makes practical, technical and commercial sense.

fermacell Gypsum Fibreboard literally has it all:

Performance

Hanging strength, acoustic performance, moisture resistance, impact resistance and fire resistance combined in one board, developed to the highest standards of German engineering (where it has been proven for over 40 years) and tested to both British and European building regulations.

Flexibility

Having only one type of board on-site makes your life easier, it is easy to fit and with no wet trades needed, you will find it quicker to complete the job too. Also, the flexibility of fixing directly to fermacell means you can put your shelves or cupboards where you want to, with no need for plastering and therefore at no extra cost.

Not only that, fermacell is produced using recycled gypsum and recycled waste paper – making it one of the greenest materials around.

fermacell Gypsum Fibreboard



With fermacell building boards, your partition will have all the properties of solid masonry with the speed and flexibility of dry wall – and the construction is often thinner, quicker

and cheaper to install with no wet trades. Change the position of your wall fixings and cupboards with ease - with fermacell, there is no requirement for plywood patressing.

- Walls, ceilings and floors
- High strength, fast installation
- Room layouts easily changed
- No wet trade requirement
- Environmentally friendly
- BBA Certified



The single board solution with fewer layers and less insulation than plasterboard is one of the many attractions that fermacell holds for those seeking the best for their property.

fermacell Gypsum Fibreboard accepts direct decoration. This means you can design the look of your walls according to your wishes – simple and reliable.

- Painting
- Tiling
- Wallpaper



fermacell Gypsum Fibreboard



fermacell Gypsum Fibreboard is moisture resistant and further offers a good degree of mould resistance making it suitable for residential bathrooms and kitchens. fermacell has a strong

hanging strength. Many items can be fixed directly to the boards without fastening to the sub-structure.

- 50 kg per toggle bolt
- 30 kg per screw



See how fermacell ticks all the boxes

	Moisture Resistance	Fire Protection	Sound Insulating	Impact Resistance	Load Carrying
Standard Plasterboard	-	-	-	-	-
Performance Moisture Board	●	-	-	-	-
Performance Fire Board	-	●	-	-	-
Performance Sound Board	-	-	●	-	-
Performance Impact Board	-	-	-	-	●
fermacell Gypsum Fibreboard	●	●	●	●	●



Load Carrying

With a load-bearing capacity of up to 50 kg per toggle-bolt and 30 kg per screw, fermacell gives greater flexibility as many items can be fixed directly to the boards rather than the sub-structure.



Impact Resistance

The dense material has a severe duty rating, able to withstand impact from people as well as objects such as door handles, reducing the need for double layering or sheathing ply.



Moisture Resistance

High resistance to moisture makes fermacell an ideal choice for humid areas such as kitchens and bathrooms.



Sound Insulating

Greater acoustic performance, often with fewer layers than plasterboard constructions, enables slimmer partitions and simple party wall construction. A single layer of 12.5 mm fermacell can achieve 41 Rw of sound insulation.



Fire Resistance

With 60 minutes fire resistance from single layer partitions up to 10 m high, fermacell boards carry Class 'O' certification and have been approved under ETA 03/0050, classified as Euroclass A2.



Rapid Finishing

To achieve a finish identical to skim plaster, fermacell can be easily coated with FST (Fine Surface Treatment), drying in 45 minutes and eliminating the need for plastering.



Ready to decorate

fermacell building board offers a sufficiently smooth finish to readily accept paint, wall paper or tiles without the need for plastering.



Environmental

Manufactured from recycled materials to produce a sustainable building board that is recyclable.



Healthy Living

With such a high resistance to mould it is the healthy choice for use in bathrooms, laundries, kitchens and shower rooms.



Figure 1:
Measuring &
scoring



Figure 2:
Breaking the
section / cuttings



Figure 3:
Sawing with
circular handsaw



The fermacell finishing range can achieve a skim plaster type finish in a fraction of the time without the need of specialist skills

Board Cutting

Once the timber or metal framework is in place, the fermacell boards can be scored or snapped using a **fermacell** knife or cut using a circular saw or jigsaw. When using a circular saw, use vacuum attachments, select a blade with fewer teeth (a maximum of 16 is advisable) and reduce the cutting speed.

Fixing

For metal frames, boards should be screwed to the vertical studs only. With a wooden frame, they must be screwed or stapled to the whole timber frame. Because of the density of the board, it should only be fixed using **fermacell**'s self embedding screws.

Joint

fermacell Greenline Jointstik is applied to the edge of the board in a continuous 3 mm bead prior to fixing the next board. The next board is then placed at the sub frame, 10 mm away from the joint then pushed firmly against the first board spreading the adhesive across the board edge and ensuring that the joint gap is less than 1 mm. Allow the adhesive to harden fully (12-24 hours) before scraping it off.

Finish

At this stage the **fermacell** surface is smooth enough for wallpapering or tiling directly onto. For a skim plaster-type finish, simply use **fermacell** Fine Surface Treatment (FST) – a ready mixed face filler. Easily applied using a spatula, coat the entire surface and remove any excess immediately to leave a coating 0.5 mm thick which will be dry in just 45 minutes.

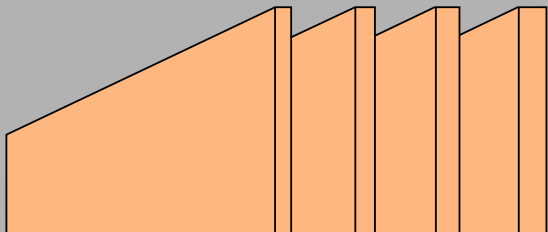


Figure 4:
Guide the Greenline Jointstik along the edge of the board. The special nozzle releases the exact amount of adhesive for 10 and 12.5 mm boards. The nozzle must be cut for 15 and 18 mm boards.



Figure 5:
Tools for installing **fermacell** Gypsum Fibreboard

fermacell board dimensions in standard sizes

Thickness	10 mm	12.5 mm	15 mm	18 mm
Weight per m ²	11.5 kg	15 kg	18 kg	21 kg
				
Square edge boards				
1500 x 1000 mm	●			●
1200 x 1200 mm		●		
2400 x 1200 mm	●	●	●	●
2700 x 1200 mm		●	●	
3000 x 1200 mm		●	●	
Tapered edge boards				
1200 x 800 mm (4 s.)		●		
2400 x 1200 mm (4 s.)	●	●	●	
2400 x 1200 mm (2 s.)	●	●	●	
Special cut sizes on request				

fermacell
Fine Surface
Treatment (FST)







fermacell
greenline Jointstik




fermacell
Joint Filler



Do you have your accessories?

	Part Number	EAN	Size	Usage
Joint Filler – For bedding tapes on tapered edge boards, filling 5-7 gap between boards and stopping screwheads				
	79001	... 00153 3	5 kg bag, 144 bags / pallet	5 m ² per kg - filling tapered edges 10 m ² per kg - finishing glue joints
	79003	... 00544 9	20 kg bag, 48 bags / pallet	5 m ² per kg - filling tapered edges 10 m ² per kg - finishing glue joints
Fine Surface Treatment – For giving standard fermacell boards a skim type finish				
	79007	... 00593 7	3 ltr tub / 3.6 kg	4-5 m ² per litre
	79002	... 00215 8	10 ltr tub / 12 kg 44 tubs / pallet	4-5 m ² per litre
Spatula 250mm – For applying Fine Surface Treatment				
	79030	... 00216 5	0.25 kg	-
greenline Jointstik – Quicker and more simple than traditional dry lining methods of jointing / A stronger joint without the need for further reinforcement / Tested by the ECO Institute				
	79224	... 01438 1	310 ml / 25 per carton	approx. 20 ml / linear meter joint

	Part Number	EAN	Screw size mm	Box quantity	Usage
3.9 x 30 / 40 / 55 / 45 / 63mm Screws – For fixing standard fermacell boards to timber or DIN standard metal frame systems					
	79021	... 00166 3	3.9 x 30 mm	250 - 0.65 kg	13 screws per m ² for walls (for each side) 30 screws per m ² for ceilings
	79011	... 00160 1	3.9 x 30 mm	1000 - 2.1 kg	13 screws per m ² for walls (for each side) 30 screws per m ² for ceilings
	79047	... 01402 1	3.9 x 40 mm	1000 - 2.6 kg	13 screws per m ² for walls (for each side) 30 screws per m ² for ceilings
	79053	... 01401 4	3.9 x 55 mm	1000 - 3.4 kg	13 screws per m ² for walls (for each side) 30 screws per m ² for ceilings
	79221	... 01401 4	3.9 x 45 mm	7500 - 26 kg	13 screws per m ² for walls (for each side) 30 screws per m ² for ceilings
	79220	... 01402 1	3.9 x 63 mm	4500 - 26 kg	13 screws per m ² for walls (for each side) 30 screws per m ² for ceilings

Frequently asked questions

How long has fermacell been available?

About 40 years – it was first produced on a commercial scale in Germany in 1971. It has been in the U.K. since 1989.

What is the difference between fermacell Gypsum Fibreboard and standard plasterboard?

fermacell is heavier than standard plasterboard due to the added density. You do not have to skim fermacell, you can paint, wallpaper or tile directly onto the board. If you want a skim type finish, use **fermacell** Fine Surface Treatment (FST).

What is FST?

It is a ready mixed filler – but it is more like a very thick paint. You put it onto the whole wall surface (with a trowel or a spatula) then scrape it all back off again.

Do I need special tools?

No – you can cut fermacell board with a **fermacell** knife or a circular saw.

Can I use standard drywall fixings?

No – fermacell is very dense and normal fixings won't pull into the board surface. **fermacell** screws are designed for the job and work on timber or metal stud work.

Do I need a bead on external corners?

No – you can do this if you wish but all you have to do is joint the boards, finish and make good then round off the corner with some sandpaper to about 3 mm – to mimic the effect of a bead.



Fermacell UK
7 The Priory
Old London Road
Canwell
Sutton Coldfield
B75 5SH
Telephone: 0121 311 3480
Fax: 0121 311 1882
E-Mail: fermacell-uk@xella.com

www.fermacell.co.uk

fermacell[®]

The latest versions of this
datasheet can be found digitally
on our website at

www.fermacell.co.uk

All information and data is correct
at the time of print. We reserve the
right to make technical changes at
any time.