

# Rosemount

smooth flagstones

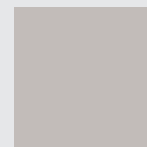
## DEPTHS

40  
Millimetres

## FINISH

Smo

Smooth

400 x  
400mm600 x  
600mmRosemount  
colours

## COLOURS

For 'Stock Information' on colours availability - see page 3.



SILVER



SLATE

NATURAL GREY **NEW**

BUFF

Frost  
ResistantPedestrian  
UseAbrasion  
Resistant



# Rosemount

smooth flagstones

Rosemount  
technical information

## STANDARDS + PERFORMANCE

<b>Product Type</b>	Functional flagstones with a smooth finish
<b>Manufactured to</b>	hEN 1339:2003
<b>Surface Layer</b>	Durable and hard wearing with a minimum surface layer of 8mm
<b>Efflorescence</b>	State-of-the-art factory controlled vapour curing significantly reduces this naturally occurring chemical reaction
<b>Bending Strength</b>	>3.5Mpa Class 1
<b>Slip / Skid Resistance</b>	(USRV) >75 extremely low potential for slip. Specific slip / skid resistance test results are available on request from our Technical Specification Department
<b>Installed to</b>	BS 7533-4:2006
<b>NBS Plus</b>	Q25 315

## SUSTAINABILITY

<b>Energy Use</b>	100% renewable
<b>Water Used</b>	100% recycled water
<b>Recyclable</b>	100% of this product can be recycled
<b>Manufacturing</b>	Produced in the UK using responsibly sourced materials
<b>Non-Primary Materials</b>	52 – 60% (surface layer)
<b>Waste Wood + Plastic</b>	100% recycled
<b>BREEAM</b>	A Rating – according to the Green Guide to Specification 4th edition 2009. A+ Rating can be achieved when used in conjunction with a prepared recycled sub-base

## EDGES

**Rosemount** is supplied with a nominal 5mm wide x 3mm deep straight chamfer edge as standard.



Straight Chamfer

## SPACER NIBS

No formed spacer.

## FINISHES

Smooth finish.

Frost  
ResistantPedestrian  
UseAbrasion  
Resistant

## AG RECOMMENDATIONS

### Close Jointing

AG recommends a close joint of between 2mm - 5mm as per BS 7533 to cater for product alignment (butt jointing should be avoided).

### Jointing Sand

AG recommends that silver and slate coloured products are jointed with AG's Granite Sand.

### Colour blending

AG recommends that products are blended from 3 packs from alternate sides using full vertical sections.

Please contact our Technical Specification Department for further details.

## ADVICE + GUIDANCE

For advice and guidance on ordering, installation, good site practice, etc. visit our website:  
[www.ag.uk.com/advice+guidance](http://www.ag.uk.com/advice+guidance)

For maintenance guidance and health and safety advice visit our website:  
[www.ag.uk.com/maintenance](http://www.ag.uk.com/maintenance)

SPECIFICATION REFERENCE: NBS PLUS: Q25 SLAB/BRICK/SETT/COBBLE PAVINGS: 31, 315; hEN: 1339:2003

# Rosemount

smooth flagstones

## DEPTHS



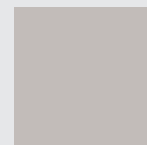
40

Millimetres

## FINISH

Smo

Smooth

400 x  
400mm600 x  
600mmRosemount  
stock information

## STOCK INFORMATION

Standard product depth	Size (mm)	In Stock	Available Colours	m <sup>2</sup> per pack	Units per m <sup>2</sup>	Units per pack	Unit weight (kg)	Weight per pack (t)	Packs per 8 wheeler (Ireland)	Packs per unit lorry (GB/Ireland)
40mm	600 x 600	Yes	Slate / Natural Grey / Buff	9	2.77	25	36	0.9	15	GB 29 / IRE 26
	400 x 400	Yes	Silver / Slate / Natural Grey / Buff	16	6.25	100	16.09	1.609	10	GB 17 / IRE 15

Information for a specific colour / depth is available on request from our Technical Specification Department.

Frost  
ResistantPedestrian  
UseAbrasion  
Resistant

## MANUFACTURING

Rosemount flags are manufactured from quality locally sourced aggregates. PLANT OF MANUFACTURE: Made at our Fivemiletown production plant.

## CERTIFICATION

ISO 9001  
ISO 14001  
ISO 45001  
CE Marking

Quality Management.  
Environmental Management.  
Occupational Health and Safety Management.  
Download our Declaration of Performance (DOP) data at: [www.ag.uk.com/resources](http://www.ag.uk.com/resources)