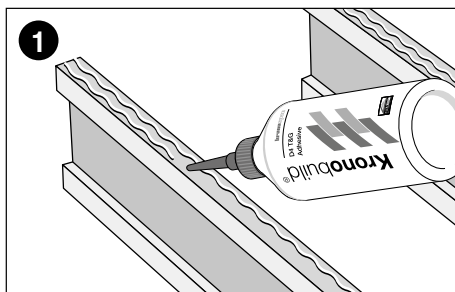


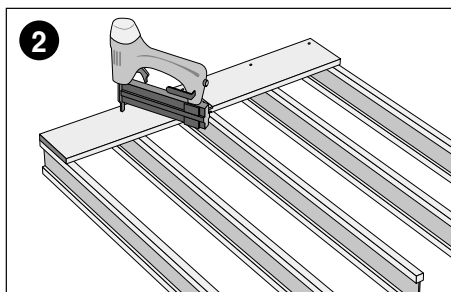
Kronobuild®

# Fast Shield T&G Flooring

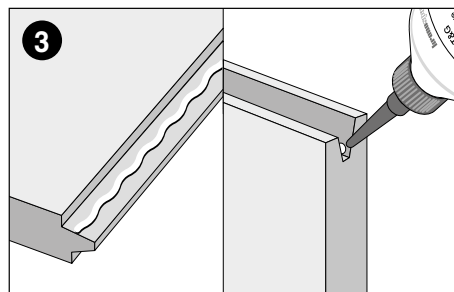
## Fitting recommendations



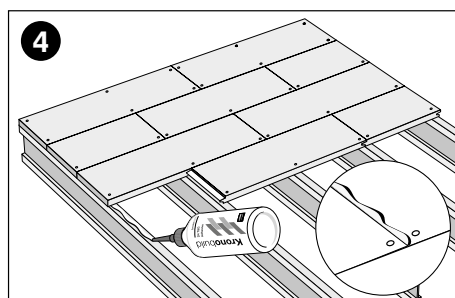
Using Kronobuild® specially formulated D4 Adhesive lay two 6mm beads to the top of the joist the first boards are to be fitted to.



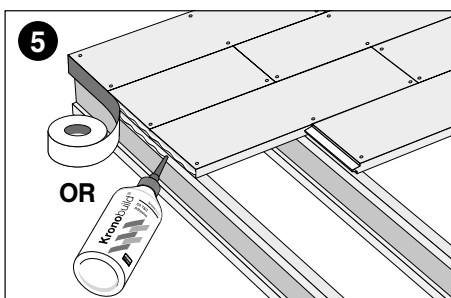
Mechanically fix the first row of boards over the joist using a fixing not less than 2 ½ times the thickness of the board. Apply Kronobuild® D4 Adhesive along the open edge profile and joists in readiness for the next board to be fitted.



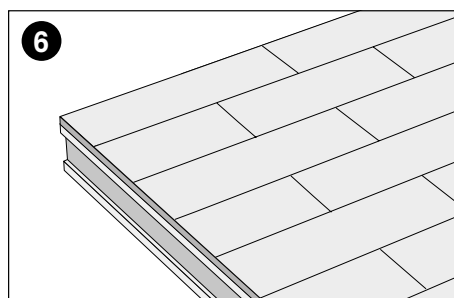
Apply Kronobuild® D4 Adhesive along the full length of both the tongue and groove profile as boards are fitted. The joints should be securely bonded when the boards are interlocked.



Repeat the application steps on subsequent rows of boards which should be laid in a staggered pattern. Short end joints, including perimeter edges, must fall on a secured joist or noggin. The boards must be fixed at the rate of three per board (i.e., one at each end and one in the middle). This nailing pattern gives a mechanical fixing every 1200 mm along each joist. Any excess adhesive should be left to dry then removed at the end of the build process. If in doubt consult NHBC guidelines.



Use Kronobuild® specially formulated D4 Adhesive or Kronobuild® reinforced weather resistant tape to seal cut edges, perimeter edges, stairwells and mechanical fixing heads to reduce the risk of moisture ingress.



Once construction work is complete the surface can be brushed with a stiff broom to remove site spoil and then use a damp mop to finish.

### Storage and conditions

Boards should be stored properly stacked, out of contact with the ground and protected from the weather. They should not be laid in wet conditions or onto wet joists. A constructed floor, correctly installed, will have satisfactory resistance to weather and can be left exposed for up to 60 days. Adhesives and adhesive tape should be stored at room temperature and protected from frost. Seek specialist advice before fitting underfloor heating systems.

### Joist Centres

18mm or 22mm panels can be used on joist centres up to 450mm. Use only 22mm panels on joist centres from 450 to 600mm.

### Expansion Provision

Gaps must be left around the perimeter of the room to allow for expansion (either 10mm or 2mm per 1 metre run of floor whichever is greater). With floors longer than 6 metres we would specify intermediate movement gaps of at least 10mm.



### Adhesive Coverage

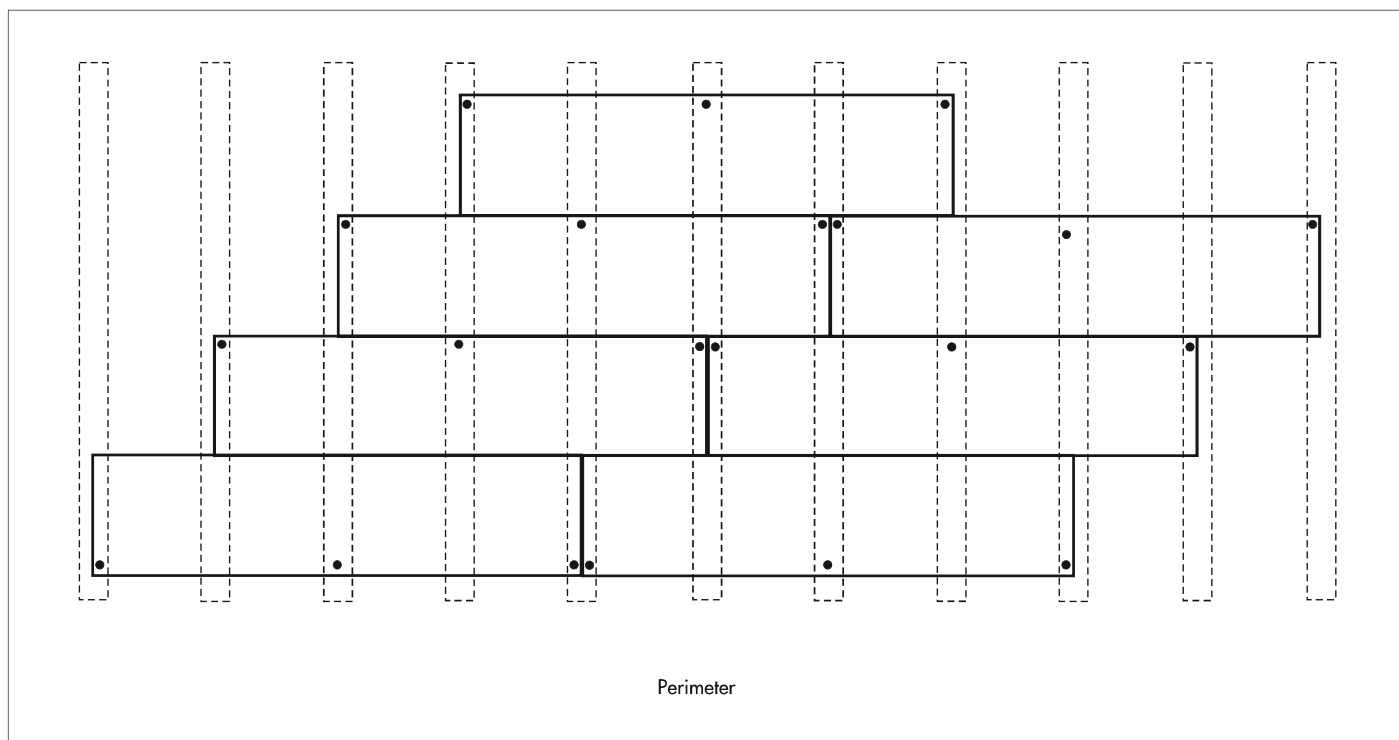
A 1 litre bottle of Kronobuild® D4 Adhesive should be enough to fix seven standard boards. Kronobuild® D4 Adhesive **MUST** be used.

### Mechanical Fixings

For 18mm boards mechanical fixing should be a minimum of 2.8mm diameter and minimum 50mm in length. For 22mm boards a minimum 3.5mm diameter and 55mm length

Board thickness	18 mm	22 mm
Minimum Fixing Length	50 mm	55 mm
Minimum Fixing Diameter	2.8 mm	3.5 mm

## Mechanical fixing pattern for 2400 mm x 600 mm boards fixed to joists.

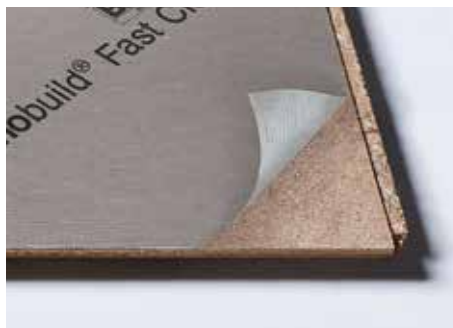


## Other Kronobuild® Fast Products



### P5 Fast Protect T&G

P5 with a permanent protective smooth coating and removable peel-off layer. 22mm thickness.



### P5 Fast Clean T&G

P5 with a removable peel-off layer to protect against spillages and damage. 22mm thickness.



### OSB 3 Fast Clean T&G

OSB 3 with a removable peel-off layer to protect against spillages and damage. 18mm thickness.

For more information visit: [www.kronospan.com](http://www.kronospan.com)