



ULTRA[®]
SCAPE

A GUIDE TO DOMESTIC PAVING



Contents

Transforming landscapes for over 25 years.....	4-5	slipbond.....	20-21
Types of suitable base for paving.....	6-7	cempoint	22-23
prem-prime.....	8-9	ProClean	24-25
prembed.....	10-11	Case Studies.....	26-31
premjoint.....	12-13	Inspiration	32-35
porcelpoint	14-15	Supporting your journey	36
flowpoint fine	16-17	Reducing our environmental impact.....	37
eco-bed	18-19	Product Selector.....	38-39

Transforming landscapes for over 25 years...

UltraScape has been helping to transform landscapes for over 25 years. Our range of high performance, rapid strength, bedding, priming, pointing and jointing solutions, has been used and specified by contractors, landscapers, architects and engineers on a range of major schemes worldwide.



Over recent years, homeowners have increasingly invested in their outdoor living areas and become inspired by seamless indoor to outdoor living spaces. This is often realised by maintaining key design elements in both your home and garden, while maximizing the view of your outdoor spaces.

Creating a seamless indoor-outdoor living design is a great way to make a small space feel bigger, flood your home with natural light and let in the natural beauty of your home's outdoor spaces.

Our range of paving installation materials work perfectly with natural stone pavers, including porcelain and granite. We have grouts and mortars that can be used internally and externally, creating a truly unified transition, with long-lasting results.

Read on to discover how UltraScape can help to reinvent your outdoor space...

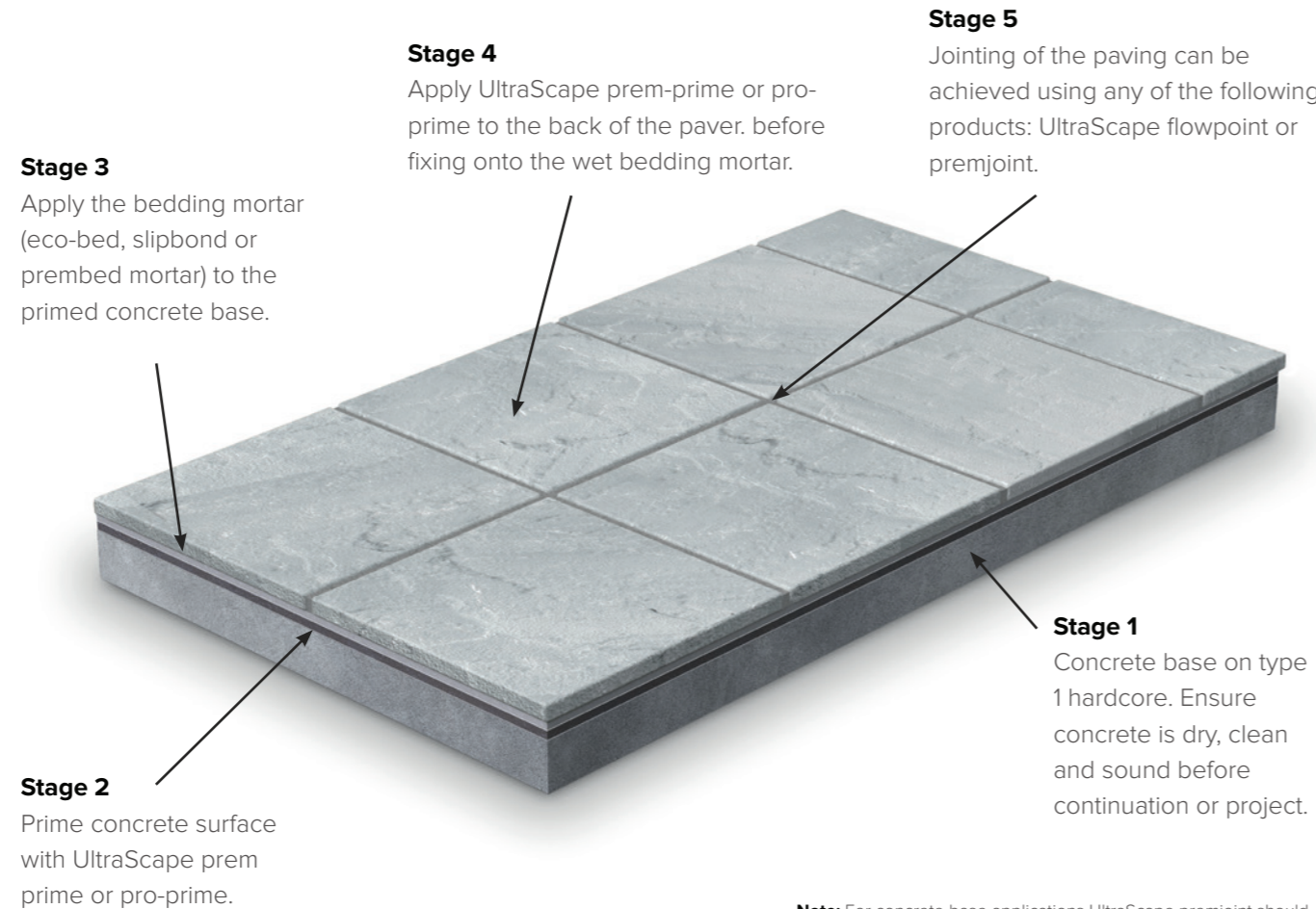


Types of suitable base for paving

The key to a successful and durable installation, is making sure you apply product to the correct substrate.

Option one Concrete Base

Traditionally, when paving externally, a concrete base is required. A typical concrete base is made up of 100mm of type one compacted stone. Once the stone has been compacted, a 200mm concrete screed should be poured over the base. It is really important that the screed is left to fully cure - we recommend leaving a concrete screed to cure for at least 6 weeks in dry conditions, prior to applying an adhesive bed. A fully cured screed will not only provide a solid base, but it will also provide a foundation to create 'falls' - a slight gradient in the bedding mortar bed that will allow water to run off.

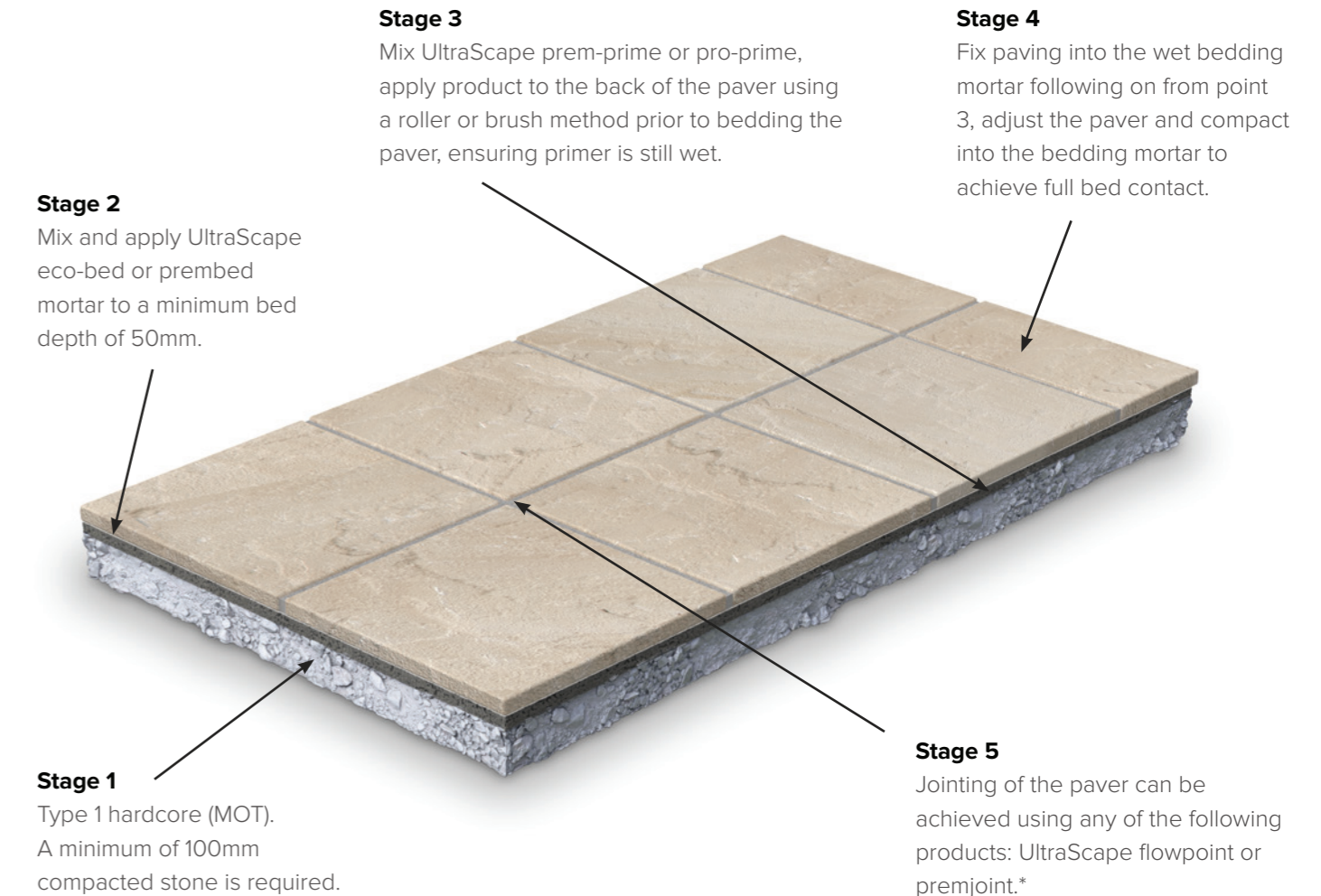


Note: For concrete base applications UltraScape premjoint should be applied using the dry method and once grouting is in place, the joint should be struck using a pointing iron.

Option two Compacted Stone

An alternative method for external paving would be a sub-base of 100mm of type one compacted stone. This is made up of one 50mm layer of compacted stone, followed by a second 50mm layer. Once this has been achieved, the pavers can be applied onto a bedding mortar such as UltraScape eco-bed.

Note: For compacted stone applications in colder conditions, UltraScape premjoint should be applied using the dry method to avoid frost damage.



For a semi permeable system, use UltraScape's prebed bedding mortar and premjoint jointing compound. This method allows the passage of water back through to the ground, eliminates surface flooding and ponding and allows foot traffic within 12 hours.

EASE OF USE



Easiest

Hardest



prem-prime

Slurry primer / bonding mortar

- Provides exceptional bond and durability
- Ideal for use with 20mm porcelain tiles
- Just add water
- Quick and easy application
- BS 7533 compliant

TOOLS REQUIRED



Mixing
Bucket

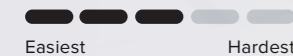


Brush or
Roller



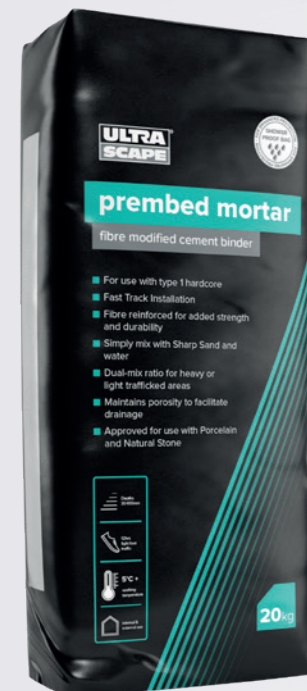
Water

EASE OF USE



Easiest

Hardest



prebed

Fibre modified cement binder

- For use with type 1 hardcore and concrete
- Simply mix with Sharp sand and water
- Dual mix ratio for heavy or light trafficked areas
- Maintains porosity to facilitate drainage

TOOLS REQUIRED



Mixing Bucket



Trowel



Sharp Sand



Water

EASE OF USE



Easiest

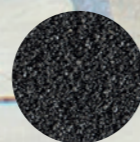
Hardest



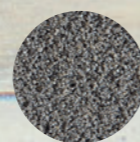
premjoints

All weather, brush-in external paving grout

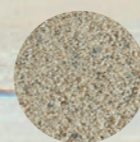
- Superior colour range to match popular stone options
- Walk on: 24-48 hours
- Quick and easy to apply



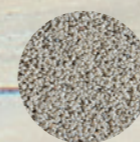
COSMIC BLACK



STORM GREY



NATURAL CASHMERE



PEBBLE GREY

TOOLS REQUIRED

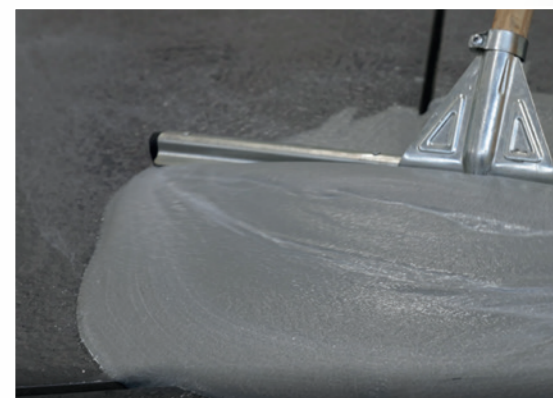


Broom



Water

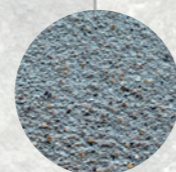
EASE OF USE



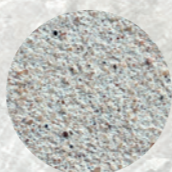
porcelpoint

Flowable porcelain grout

- Designed for use with Porcelain
- Walk on: 1 hour
- Joint widths 2-50mm



STONE GREY



LIMESTONE

TOOLS REQUIRED



Mixing Bucket



Neoprene Squeegee



Water

EASE OF USE



Easiest

Hardest



flowpoint fine

Flowable grout

- Joint widths: 2-50mm
- Walk on: 1 hour
- Set time: 15 mins



CHARCOAL



NATURAL
GREY

TOOLS REQUIRED



Mixing
Bucket



Neoprene
Squeegee



Water

EASE OF USE



Easiest

Hardest



eco-bed

An environmentally friendly bedding mortar

- Contains 20% recycled material
- Depth: 10-100mm
- Walk-on: 12 hours
- Drive on: 24 hours
- BS 7533 compliant

TOOLS REQUIRED



Mixing
Bucket



Trowel



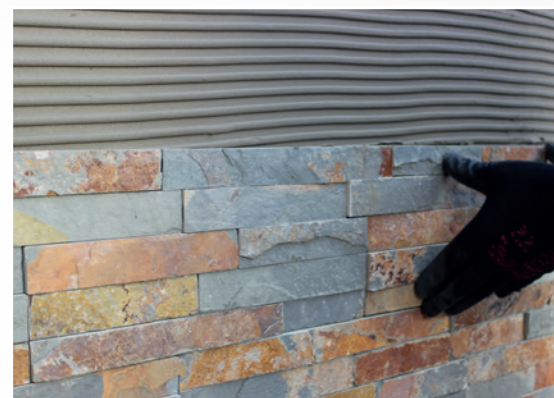
Water

EASE OF USE



Easiest

Hardest



slipbond

Flexible cladding adhesive for internal and external wall and floor installations

- Provides exceptional bond and durability
- Bed thickness: 3-20mm, up to 1m²
- Set time: 16 hours
- Extended workability
- For vertical and horizontal applications

TOOLS REQUIRED



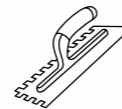
Mixing Bucket



Measuring Jug



Drill and Paddle

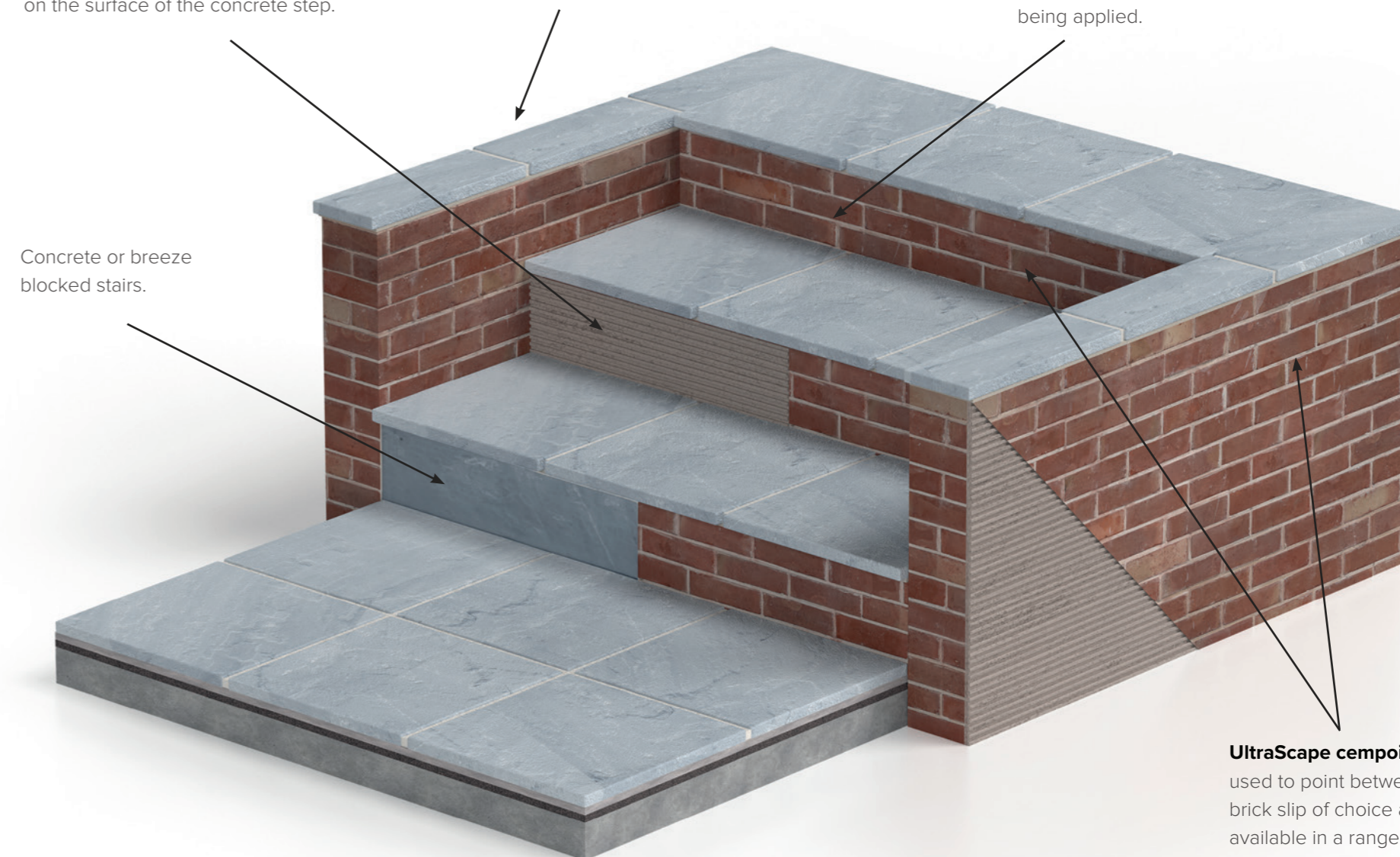


Notched Trowel

Simply apply **UltraScape slipbond** on the surface of the concrete step.

UltraScape slipbond is also suitable for coping stone applications.

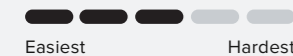
Apply brick slips or stone within 25 minutes of **slipbond** being applied.



Concrete or breeze blocked stairs.

UltraScape cempoint can be used to point between your brick slip of choice and is available in a range of colours.

EASE OF USE



Easiest

Hardest



cempoint

Gun injected mortar for vertical applications

- Ideal for pointing and repointing many types of brickwork
- Set time: 2.5 hours
- Minimum joint width: 5mm
- Just add water

TOOLS REQUIRED



Mixing Bucket



Measuring Jug



Drill and Paddle



Small Trowel



Pointing Gun



Pointing Tool



Small Brush



Sponge

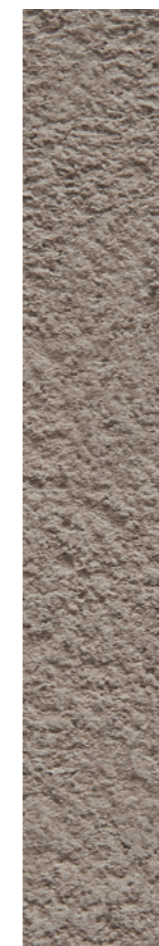
Available Colours



WHITE



SANDSTONE



YORKSTONE



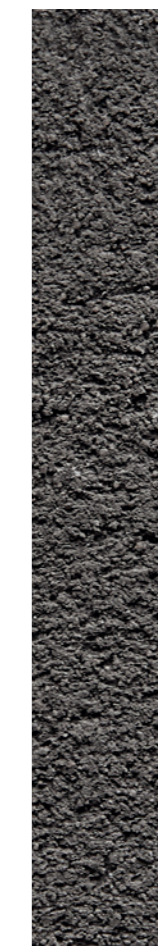
LIGHT BROWN



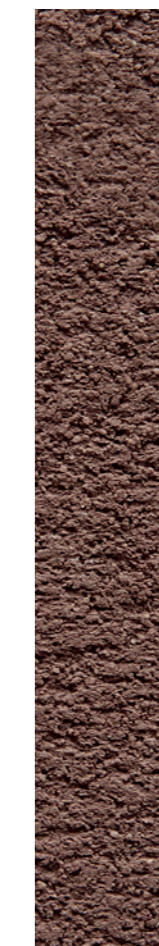
LIGHT GREY



NATURAL



DARK GREY



BRICK RED



DARK BROWN



BLACK



ProClean

A range of dedicated, specialist cleaners, sealers and maintenance solutions to keep stone and tiles looking pristine.

Seal. Protect. Maintain.



Xtreme Clean

Heavy duty tile, stone & grout cleaner



Epoxy Resin-off

Grout & Polymer Residue Remover



Grout Aid

Final rinse additive



Tile & Grout Sealer

Impregnating Sealer for grout and tiles



Grout Haze Remover

Cement & Grout Residue Cleaner



Easy Clean Tile Protector

Temporary protective sealer for use prior to grouting or jointing



Porcelain Tile & Stone Cleaner

Everyday cleaner



UltraScape's summer with the Royal Horticultural Society



Designer, **Rachel Platt**, won a Silver Gilt Medal, Best Construction and Best Young Designer at RHS Tatton Park for her Covid Recovery Garden. Several UltraScape materials were used in the construction of it including pro-bed HS bedding mortar, pro-prime slurry primer, flowpoint fine in Natural Grey and slipbond brick slip adhesive. Rachel's breath-taking garden featured a tree with messages of support and remembrance, transparent arbour and rain garden.

Silver Gilt Medal Award winner, **Bea Tann**, the youngest gardener to feature at RHS Chelsea Flower Show, used UltraScape slipbond and cempoint to install the reclaimed rough stone bricks in her 'Enchanted Rain Garden', inspired by a rainy day in Manchester.



Joe Swift, much-loved garden designer and TV Presenter, had the honour of designing BBC Radio 2 and The One Show's 'Sow Grow and Show Garden' at 2022 RHS Tatton Park. Created to celebrate and encourage 'growing our own' Joe's stunning garden featured a potting bench, raised beds full of salad and vegetables and an abundance of beautiful grasses and perennials.

UltraScape's bedding and priming materials were used to install the paving which framed the wooden seating areas.

The RHS and Eastern Eye Garden of Unity Horticultural Society



Materials used:
UltraScape eco-bed
UltraCrete Super Fix



Designed by Manoj Malde, the RHS's Ambassador for diversity and inclusivity, this beautiful and vibrant garden promotes horticulture for everyone, everywhere.

Inspired by Manoj's Indian heritage, the garden has inclusivity and sustainability at its heart. Alongside peat-free planting, the garden also embraced the use of reclaimed materials to create the limestone path and used eco-bed to install the limestone paving.



This stunning Silver-Gilt show garden draws creative inspiration from the way knowledge is passed down from generation to generation and interpreted in the modern world. The inspiration of the garden is that of a young couple who have used the knowledge passed to them from their grandparents to create a garden that expresses their ideals of longevity, biodiversity and habitat for the future.

To assist with the longevity and sustainable features of this garden, landscaping expert and garden consultant, G K Wilson Landscapes, opted to use UltraScape eco-bed environmentally friendly bedding mortar and slipbond brick slip adhesive to install the beautiful Lunar Sand pavers and Dover Taupe porcelain wall tiles.

For the finishing flourish, the paving was grouted using UltraTile ProGrout Flexible in Almond and Grey.

RBC Brewin Dolphin Garden



Materials used:
UltraScape eco-bed
UltraScape slipbond
UltraTile ProGrout Flexible
in Grey and Almond
UltraCrete Super Fix

UltraScape creates picture perfect landscapes

Multi award-winning Fritch Landscape Design & Build have created a beautiful garden landscape using UltraScape’s market-leading flowable grout.

Background

A beautiful domestic garden and patio in Southey Green in Essex has undergone a transformation thanks to the expertise of Fritch Landscape Design & Build.

The Challenge

It was the homeowners dream to use reclaimed Yorkstone cobbles as part of their design. A robust, but beautiful, grout was required due to constant use and because of the variances in depth, a flowable grout was preferred to save time, and the landscapers knees.



The Solution

Experts at creating unique and contemporary outdoor spaces, Fritch Landscape Design & Build used UltraScape flowpoint to joint the reclaimed Yorkstone cobbles and pavers to create a picture-perfect sidewalk and generous patio.

UltraScape flowpoint is a flowable grout which allows for large areas of paving to be grouted quickly. Suitable for joints from 3mm to 50mm and as deep as 200mm, flowpoint has been developed over a number of years to provide a durable and aesthetically pleasing finish which will not crack or stain.

With an initial set after just 15 minutes, and a walk on time of one hour, it is unsurprising that flowpoint has become synonymous with fast application, cost-effective and robust jointing.

UltraScape flowpoint is available in two colours – Natural Grey and Charcoal – and four varieties. There is something for all designs and tastes.



Results

The results of this project are clear to see. On the performance of flowpoint, Fritch Landscape Design & Build commented: “UltraScape flowpoint is always our go to product whether it be Yorkstone or Porcelain. It is completely versatile, incredibly durable and makes light work of pointing or grouting.”

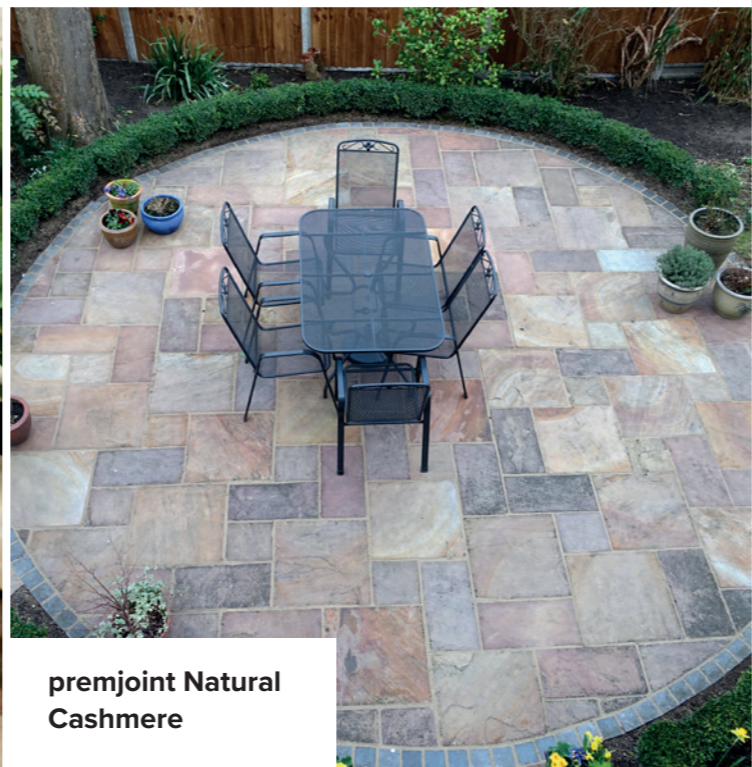


Reinvent your garden space...

Homeowners have increasingly invested into their outdoor living spaces and the UltraScape Domestic Range can help create picture perfect gardens for all to enjoy.



slipbond Brick Slip Adhesive



prejoint Natural Cashmere





porcelpoint Stone Grey
Flowable Grout



flowpoint fine
Natural Grey

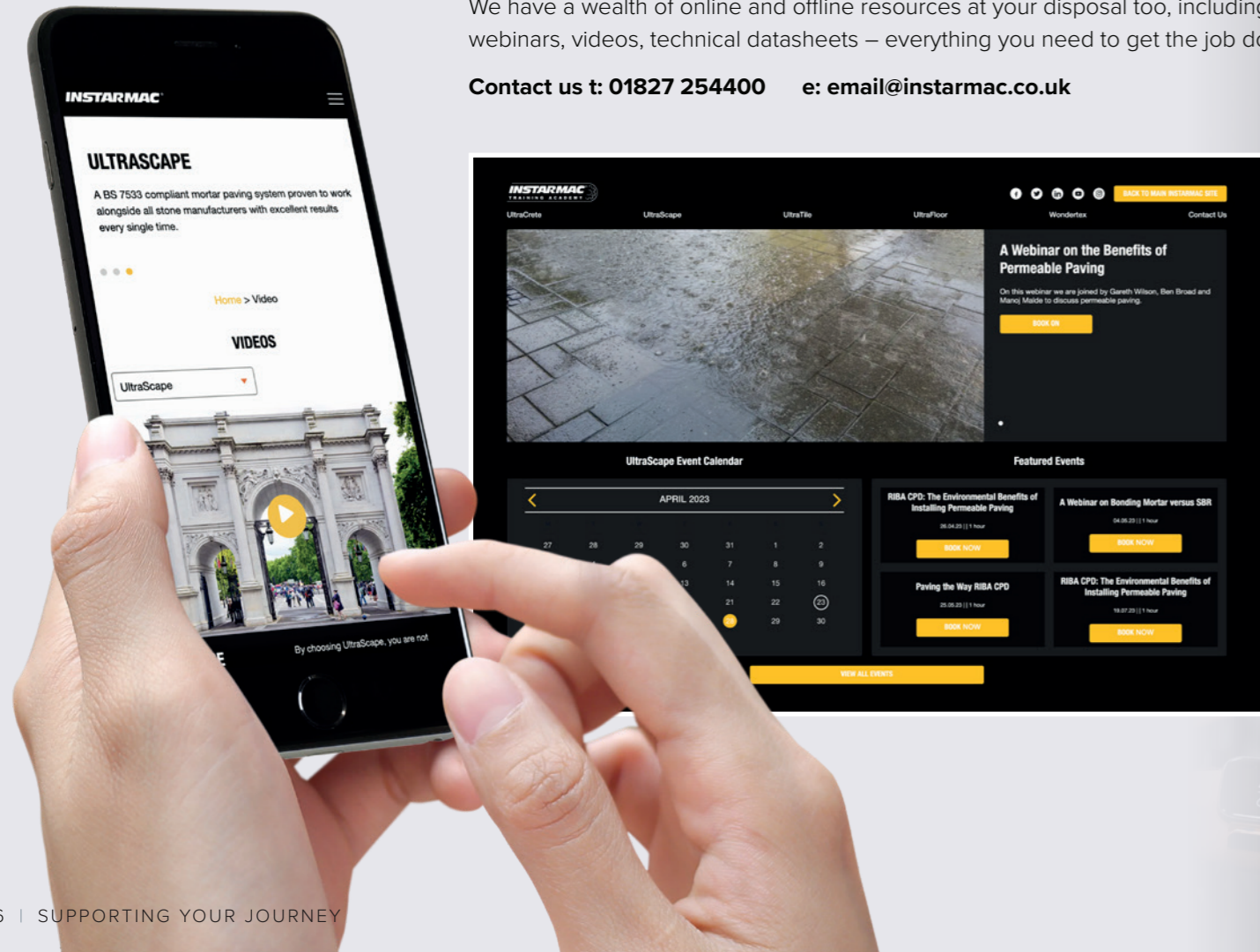


Supporting your journey

The UltraScape team will be on hand to help you every step of the way, from initial design, specifying the right product and after sales support.

We have a wealth of online and offline resources at your disposal too, including webinars, videos, technical datasheets – everything you need to get the job done!

Contact us t: 01827 254400 e: email@instarmac.co.uk



Reducing our environmental impact

We are committed to continuously re-evaluating and reducing environmental impact to encourage a positive, long-term future.

1. Resources

Less Raw Materials: Many of our products contain recycled materials. We look to do this wherever possible to reduce our reliance on declining raw materials, producing more sustainable products.

2. Manufacturing

Operating Responsibly: We take all the necessary measures needed to ensure our products are manufactured efficiently and with as little environmental impact as possible.

Our other brands...

**ULTRA
CRETE**

Proven and trusted highways maintenance and repair materials

**ULTRA
TILE**

Ready mixed and cement-based wall and tile adhesives, grouts and ancillaries

**ULTRA
FLOOR**

Levelling and smoothing compounds, DPM and primer for commercial flooring applications

wondertex

A range of internal finishing solutions to include drylining, decorative texturing, coving, jointing and joint tapes



3. Transport

Delivering Efficiently: We own a 37-strong fleet and invest in the most up-to-date logistics technology and efficiency procedures to ensure that we offer an award-winning delivery service, with minimal carbon footprint.

4. Usage

Expert Guidance: Our highly skilled and experienced training team annually deliver over 100 customer training sessions to ensure the correct installation of our products, increasing their lifespan and reducing waste.

5. Recycling

No Waste: We have been a zero waste to landfill since 2014, meaning all of our postproduction waste is reused or recycled and operate a successful pallet recycling scheme.

Product Selector Guide



	eco-bed	slipbond	cempoint	prembed mortar
Product overview	Single part, pre-blended, fine bedding concrete. Contains 20% recycled glass	Vertical stone and brick slip adhesive	Single part, pre-blended, gun applied mortar for vertical and horizontal jointing	A fibre modified cement binder which, when mixed with graded aggregates and water, can produce a rapid drying high strength bedding mortar ready to receive floor finishes such as Porcelain / natural stone tiles etc.
Working time at 20°C	40-50 minutes	2 hours	45 minutes	-
Set time for foot traffic at 20°C	12 hours	-	12 hours	12 hours
Set time for vehicular traffic at 20°C	24 hours	-	24 hours	24 hours
Unit size	25kg bag	20kg bag	25kg bag	20kg bag
Product yield	13.36 litres	15 litres	14.5 litres	-
Coverage	0.45m ² per bag at 30mm bed depth	5m ² at 3mm depth	1m ² per bag using 215mm x 102.5mm x 65mm with a 12mm joint	A 30mm layer of prembed mortar will cover 1.65m ² per 20Kg bag
Minimum and maximum width/depth	10-100mm	3-20mm	5-25mm width, 25-100mm depth	10-100mm
Compressive strength	45N/mm ² (28 days)	N/A	49.6N/mm ² (28 days)	>35N/mm ² (28 days)
Bond strength	2.5N/mm ² (28 days)*	> 2.5N/mm ²	> 1.5N/mm ² (28 days)	2.5N/mm ² (28 days)*

*With prem-prime



	prem-prime	porcelpoint	flowpoint fine	premjoint
Product overview	Single part, pre-blended slurry primer	Flowable porcelain grout	Fine slurry jointing mortar	A high specification, decorative, brush-in pave jointing solution, suitable for use with granite, porcelain and other premium quality natural stone
Working time at 20°C	3 hours	20 mins	20 mins	35-45 mins
Set time for foot traffic at 20°C	N/A	1 hour	1 hour	24-48 hours
Set time for vehicular traffic at 20°C	N/A	4 hours	4 hours	N/A
Unit size	17kg bucket	20kg bucket	20kg bucket	15kg bucket
Product yield	14.37 litres	11.12 litres	11.12 litres	-
Coverage	13m ² per bucket	50m ² per bucket using 900 x 600 x 20mm porcelain (4mm joint)	1m ² per bucket using 100 x 100 x 100mm setts (6mm joint) 7m ² per bag using 600 x 400 x 60mm flags (6mm joint)	Joint width x joint depth: 8-9.5 sqm based on a paving size of 450mm x 450mm x 25mm (depth) for an 8mm joint gap
Minimum and maximum width/depth	2-3mm	2-50mm	2-50mm	3-20mm
Compressive strength	N/A	49.6N/mm ² (28 days)	49.6N/mm ² (28 days)	6.70N/mm ² (28 days)
Bond strength	2.5N/mm ² (28 days)	1.5N/mm ² (28 days)	1.5N/mm ² (28 days)	-



Head Office
Danny Morson Way
Birch Coppice Business Park
Dordon, Tamworth
Staffordshire, B78 1SE

t: +44 (0) 1827 254400
e: email@instarmac.co.uk

f in @ ultrascape.co.uk

All information contained within this brochure was correct at time of print.