

Market Leading
Underfloor
Heating Systems



PRODUCT CATALOGUE





WHY THERMRITE?

INDUSTRY LEADING UNDERFLOOR HEATING & MULTI-LAYER PIPE SYSTEMS.

ThermRite are recognised designers and suppliers of innovative market leading underfloor heating products.

Feel free to get in touch to discuss your requirements.

01625 912220 | info@thermrite.co.uk





Market Leading Underfloor Heating Systems

Thermrite Limited are recognised designers and suppliers of market leading underfloor heating components and systems.

As a company, we combine our wealth of experience and technical expertise in the Underfloor Heating sector, to create innovative and efficient heating solutions. The Thermrite range of products are designed to ensure we can supply a heating system for all size and type of building construction ranging from an individual room, to heating solutions for large housing contracts, commercial properties, schools and care home, where dependable consistent warmth is a prerequisite.

At Thermrite our team of professional designers will work closely on a one to one basis with the customer and building designers to ascertain the individual requirements of any project. We will then combine our bespoke design software & unrivalled product knowledge, in order to create the most efficient and appropriate heating system for any build or application. Bespoke CAD drawings will be produced from the floor plans and supplied with all underfloor heating systems. Upon completion of any design an itemised product list and competitive quotation will be produced and supplied to the customer.

All Thermrite products are stocked in large quantities in our dedicated 12,000 square foot warehouse. This stock holding ensures we have the ability to fulfil orders at short notice and on a same day despatch / next day delivery basis, whether this be for a one off delivery or as part of a large call of process.

Thermrite Limited combine their market knowledge and experience, with their high quality innovative products, Thermrite warranties and a price beating guarantee, to ensure customers have peace of mind when choosing Thermrite as their specialist designer and supplier for all underfloor heating requirements.



Price Match Guarantee



Lifetime Warranty



Free Design Service



**Please note that images are for illustrative purposes
and products provided may vary in appearance.*

CONTENTS



Introduction to UFH	5
Underfloor Heating Manifolds, Connectors & Ball Valves	7
Multi-Layer Pipe	8
Pumps & Connections	9
Thermostats & Wiring Centres	10
Boards & Adhesives	11-12
Electric Underfloor Heating	13
Press Fittings	14-16
Transition Fittings	17
Compression Fittings	18
Tools	19
UFH Kits	20
Bespoke Design Service	21

Water Underfloor Heating

Our years of experience dedicated to the design and supply of underfloor heating systems on projects ranging from single room extensions and new build homes to large office blocks, schools and care homes allows us to offer guaranteed systems tailor made specifically to each individual application.



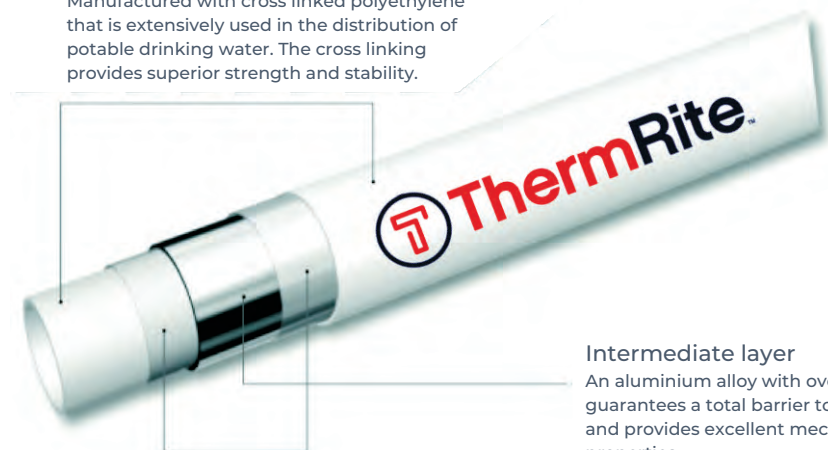
Advantages

- * Easy to cut, bend and fit
- * Broad Operating Temperature Range
- * 100% Oxygen Barrier
- * Corrosion Free
- * 25 Year Insurance Backed Guarantee

Multi-Layer Pipe System

The Multi-Layer Pipe System (MLP) is an advanced, very hard wearing and easy to work system. It is manufactured using a well engineered combination of toughened plastic and overlap welded aluminium. This composite of high quality materials means that Multi-Layer Pipe has similar durability to metal pipes such as copper, but is also light weight, easy to cut, shape and install like plastic pipes. It is a tried and tested product designed to give plumbers and installers the perfect balance of dependability and ease of installation.

External and Internal layers
Manufactured with cross linked polyethylene that is extensively used in the distribution of potable drinking water. The cross linking provides superior strength and stability.



Intermediate layer
An aluminium alloy with overlapped welding that guarantees a total barrier to the passage of oxygen and provides excellent mechanical and chemical properties.

Bonding layers
Manufactured with a powerful adhesive that bonds the intermediate aluminium layer with the internal and external layers.



Water Underfloor Heating * Electric Underfloor Heating * Plumbing * Thermostats & Controls * Boards *
Adhesives & Floor Levellers * Priority CAD Design Services * Tools & Accessories

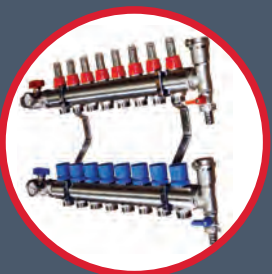
Underfloor Heating Manifolds, Connectors & Ball Valves



Pipe Connectors



Ball Valves



Underfloor Heating Manifolds

Pipe Connectors

Description	Product Number
Connector Cores / Eurocone 16mm x 3/4"	TR1-C1216x3/4
Connector Cores / Eurocone 12mm x 3/4"	TR1-C0912x3/4

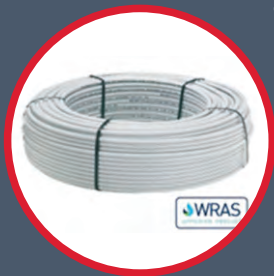
Ball Valves

Description	Product Number
Isolation Ball Valve Set with Temperature Gauges (Pair)	TM-BallValve-Pair-01
Fill and Drain Valve Set - with Automatic Air Vent (Pair)	TM-Fill-Drain-Pair-01

Underfloor Heating Manifolds

Description	Product Number
2 Port Underfloor Heating Manifold	TM-2SS-1F-3/4-AA-01
3 Port Underfloor Heating Manifold	TM-3SS-1F-3/4-AA-01
4 Port Underfloor Heating Manifold	TM-4SS-1F-3/4-AA-01
5 Port Underfloor Heating Manifold	TM-5SS-1F-3/4-AA-01
6 Port Underfloor Heating Manifold	TM-6SS-1F-3/4-AA-01
7 Port Underfloor Heating Manifold	TM-7SS-1F-3/4-AA-01
8 Port Underfloor Heating Manifold	TM-8SS-1F-3/4-AA-01
9 Port Underfloor Heating Manifold	TM-9SS-1F-3/4-AA-01
10 Port Underfloor Heating Manifold	TM-10SS-1F-3/4-AA-01
11 Port Underfloor Heating Manifold	TM-11SS-1F-3/4-AA-01
12 Port Underfloor Heating Manifold	TM-12SS-1F-3/4-AA-01

Multi-Layer Pipes



ThermRite Multilayer Pipe
comes in 5 Diameters

- * 12mm
- * 16mm
- * 20mm
- * 25mm
- * 32mm



Pert-Al-Pert Pipe

Description	Product Number
12mm Multilayer Pipe 80m	TP2-0912-80-W
16mm Multilayer Pipe 100m	TP2-1216-100-W
16mm Multilayer Pipe 150m	TP2-1216-150-W
16mm Multilayer Pipe 200m	TP2-1216-200-W
16mm Multilayer Pipe 300m	TP2-1216-300-W
16mm Multilayer Pipe 500m	TP2-1216-500-W

Pex-Al-Pex Pipe (WRAS Approved)

Description	Product Number
16mm Multilayer Pipe 75m	TP1-1216-75-W
16mm Multilayer Pipe 100m	TP1-1216-100-W
16mm Multilayer Pipe 150m	TP1-1216-150-W
16mm Multilayer Pipe 200m	TP1-1216-200-W
16mm Multilayer Pipe 300m	TP1-1216-300-W
16mm Multilayer Pipe 500m	TP1-1216-500-W
20mm Multilayer Pipe 50m	TP1-1620-50-W
25mm Multilayer Pipe 50m	TP1-2025-50-W
32mm Multilayer Pipe 50m	TP1-2632-50-W

Pumps & Connections

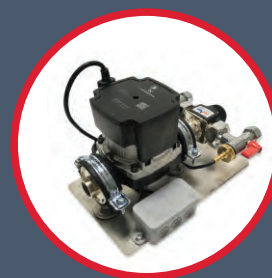


Underfloor Heating Controls & Pumps

Description	Product Number
MultiZone Temperature Control Pump	ESS-T4-G-210
Single Zone Temperature Control Pump	ESS-SL-G-TB
Pre-Assembled Heat Pump Circulation Pack	ESS-HP-G-210
Grundfos UPM3 Auto-A-Rated Circulation Pump (Pump Only)	ESS-G-25-7.5

Adaptors, Valves & Actuators

Description	Product Number
Pump Connection Pack with Isolation Valves 22m (Pack of 2x22m copper - 3/4" Male)	ESS-ISO-PAIR-22
Pump Connection Pack with Isolation Valves 28m (Pack of 2x28m copper - 3/4" Male)	ESS-ISO-PAIR-28
Pump Isolation Ball Valves (Pair)	ESS-ISOPAIR
Watts 230V Electrothermic Actuator	22CX230NC2
2 Port Motorized Zone Valve	ZONE250305



Underfloor Heating Controls & Pumps



Adaptors, Valves & Actuators



Thermostats and Wiring Centres

*Most heatmiser products are also available in Black or Silver

Wired Thermostats

Description	Product Number
Heatmiser Slimline Programmable Thermostat	SLIMLINE
Heatmiser Touchscreen Programmable Thermostat	TOUCH
Heatmiser Dial Thermostat	DS1
Manual Underfloor Heating Room Thermostat - DS1 Basic 230volt	DS1 BASIC
Heatmiser NeoStat	NEOSTAT
Heatmiser NeoStat-HW-Hot Water Programmer	NEOSTAT-HW

Wireless Thermostats

Description	Product Number
Heatmiser Slimline-RF Wireless Thermostat	SLIMLINE-RF
Heatmiser NeoAir Wireless Thermostat	NEOAIR
Two Channel Wireless Receiver	RF-SWITCH

Electric Thermostats

Description	Product Number
Heatmiser Slimline-E	SLIMLINE-E
Heatmiser NeoStat-E	NEOSTAT-E



Wiring Centres



Wired/Wireless & Electric
Battery Powered Thermostats



Accessories

Battery Powered Thermostats

Description	Product Number
Heatmiser Slimline-B	SLIMLINE-B

Wiring Centres

Description	Product Number
Heatmiser 4 Zone Wiring Centre	UH4
Heatmiser 6 Zone Wiring Centre	UH6
Heatmiser 8 Zone Wiring Centre	UH8
Heatmiser 8 Zone Wireless Wiring Centre	UH8-RF

Accessories

Description	Product Number
Heatmiser Sensor Probe	SENSOR PROBE
Heatmiser Thimble Sensor	THIMBLE SENSOR
Heatmiser Sensor Probe Housing	ENO30
Heatmiser NeoHub	NEOHUB
Heatmiser NeoPlug	NEOPLUG

Boards & Adhesives

Standard XPS Board

Description	Product Number
6mm XPS Insulation Board 1200x600mm	XP-PRO 6mm
10mm XPS Insulation Board 1200x600mm	XP-PRO 10mm

Tile Backer Board

Description	Product Number
6mm Tile Backer Board 1200x600mm	TTBB 06
10mm Tile Backer Board 1200x600mm	TTBB 10

Floating Floor Routed and Foiled Panels

Description	Product Number
ThermRite Routed & Foiled EPS - 1200x600x18mm, 6 Grooves @ 100mm Centres to suit 12mm Pipe	RTEPS0186001200RF-100
ThermRite Routed & Foiled EPS - 1200x600x18mm, 4 Grooves @ 150mm Centres to suit 12mm Pipe	RTEPS0186001200RF-150
ThermRite Routed & Foiled EPS - 1200x600x25mm, 8 Grooves @ 150mm Centres to suit 16mm Pipe	RT FOIL-EPS-R200-25x1200-150
ThermRite Routed & Foiled EPS - 1200x600x25mm, 6 Grooves @ 200mm Centres to suit 16mm Pipe	RT FOIL-EPS-R200-25x1200-200

Solid Floor Panels (Tile Direct)

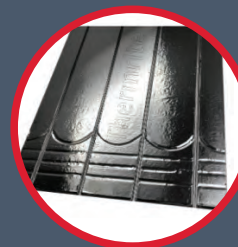
Description	Product Number
ThermRite Solid Floor Panel - XPS Routed Insulation 1200x600x18mm - 4 Grooves @ 150mm Centres for 12mm Pipe	SFP120-60-4-150x18mm
ThermRite Solid Floor Panel - XPS Routed Insulation 1200x600x25mm - 4 Grooves @ 150mm Centres for 16mm Pipe	SFP120-60-150x25mm
ThermRite Solid Floor Panel - XPS Routed Insulation 1200x600x25mm - 3 Grooves @ 200mm Centres for 16mm Pipe	SFP120-60-200x25mm

Premium Dual Purpose Panel for Tile or Wood Floors (Tile Direct)

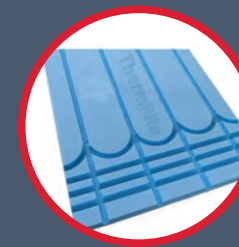
Description	Product Number
ThermRite™ PRO - Premium Dual Purpose 16mm Insulation Panel EPS400 - Accepts Tile or Wood Floors Directly - High Output 120mm Pipe Centres for 12mm pipe	TRPRO-120x60-120-16
ThermRite™ PRO - Premium Dual Purpose 20mm Insulation Panel EPS400 - Accepts Tile or Wood Floors Directly - High Output 150mm Pipe Centres for 16mm pipe	TRPRO-120x60-150-20
ThermRite PRO Contact Adhesive 500ml	TRPROAdh-500



Solid Floor Panel



Floating Floor Routed and Foiled Panels

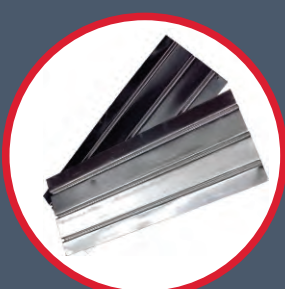


Standard XPS Board

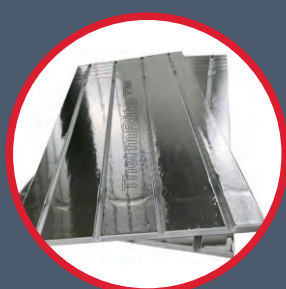
Boards & Adhesives



HeatBoard ONE
Routed Chipboard
Panel



Spreader Plates



Low Profile Panels

HeatBoard ONE Routed Chipboard Panels

Description	Product Number
HeatBoard ONE - Grooved P5 MR Chipboard 2400x600x22mm, 4 Grooves @ 150mm Centres + radius returns @ both ends for 12mm pipe	RTCHIP0226002400R
HeatBoard ONE PLUS - Foil Faced Grooved P5 MR Chipboard 2400x600x22mm, 4 Grooves @ 150mm Centres + radius returns @ both ends for 12mm pipe	RTCHIP0226002400R-FF

Spreader Plates

Description	Product Number
Double Groove Aluminium Spreader Plate	AHDP-2
Triple Groove Aluminium Spreader Plate	AHDP-3
Fit From Below Aluminium Double Spreader Plate - 150mm Wide	FFB-150
Fit From Below Aluminium Double Spreader Plate - 250mm Wide	FFB-250

Low Profile Panels

Description	Product Number
Profix Panel - 600x600x15mm - Pack of 10 - Holds 12mm Pipe @ 150mm pipe centres	PP600
Profix™ Plus Panel -1200x600x20mm - Low Profile 20mm Panel to hold 14-17mm Pipe	PP1200-PLUS

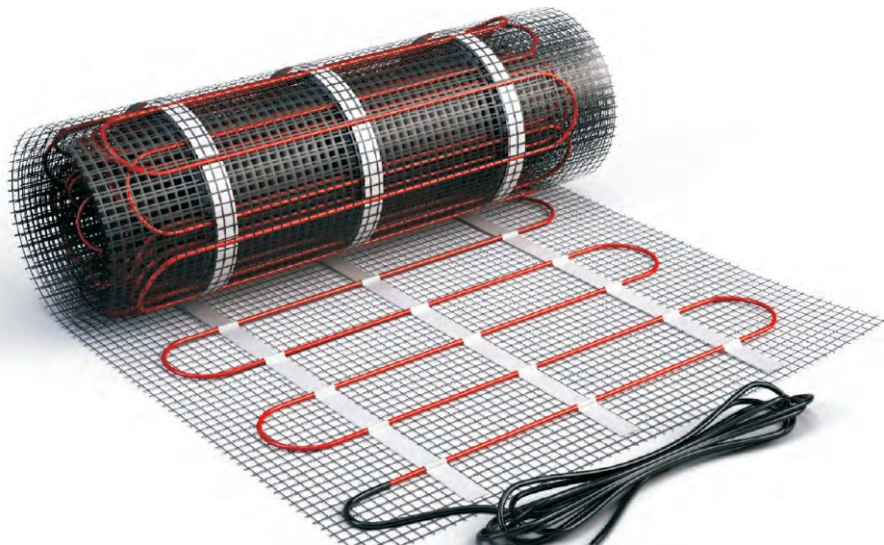
Castellated Floor Panels

Description	Product Number
1220x820x20mm for 16mm Pipe @ 50/100/150 or 200mm Pipe Spacings (1.00m ² /panel)	CPUFH002CP
1220X820X15mm for 12mm Pipe, with Screened Holes and Self-Adhesive Backing (1.00m ² /panel)	UFH003CP+SH+SA

Electrical Underfloor Heating

ThermRite supply a variety of Electric Underfloor Heating solutions. They are all designed to make installation as quick and as easy as possible. We have different solutions to suit specific projects such as Loose Cable Systems designed for tile / stone floors and In-Screed Cable System that is perfect for new build projects.

- * Undertile Heating Mats
- * Undertile Heating Cables
- * Under Wood Heating Foil
- * Insulation Boards



Description	Product Number
ThermRite 1.0m2 Mat - 150 Watts/m2	TRM150-150
ThermRite 1.5m2 Mat - 150 Watts/m2	TRM150-225
ThermRite 2.0m2 Mat - 150 Watts/m2	TRM150-300
ThermRite 2.5m2 Mat - 150 Watts/m2	TRM150-375
ThermRite 3.0m2 Mat - 150 Watts/m2	TRM150-450
ThermRite 4.0m2 Mat - 150 Watts/m2	TRM150-600
ThermRite 5.0m2 Mat - 150 Watts/m2	TRM150-750
ThermRite 6.0m2 Mat - 150 Watts/m2	TRM150-900
ThermRite 7.0m2 Mat - 150 Watts/m2	TRM150-1050
ThermRite 8.0m2 Mat - 150 Watts/m2	TRM150-1200
ThermRite 9.0m2 Mat - 150 Watts/m2	TRM150-1350
ThermRite 10.0m2 Mat - 150 Watts/m2	TRM150-1500
ThermRite 1.0m2 Mat - 200 Watts/m2	TRM200-200
ThermRite 1.5m2 Mat - 200 Watts/m2	TRM200-300
ThermRite 2.0m2 Mat - 200 Watts/m2	TRM200-400
ThermRite 2.5m2 Mat - 200 Watts/m2	TRM200-500
ThermRite 3.0m2 Mat - 200 Watts/m2	TRM200-600
ThermRite 4.0m2 Mat - 200 Watts/m2	TRM200-800
ThermRite 5.0m2 Mat - 200 Watts/m2	TRM200-1000
ThermRite 6.0m2 Mat - 200 Watts/m2	TRM200-1200
ThermRite 7.0m2 Mat - 200 Watts/m2	TRM200-1400
ThermRite 8.0m2 Mat - 200 Watts/m2	TRM200-1600
ThermRite 9.0m2 Mat - 200 Watts/m2	TRM200-1800
ThermRite 10.0m2 Mat - 200 Watts/m2	TRM200-2000

Press Fittings

Equal Straight Connector

Description	Product Number
Equal Straight Connector 16mm	TR5-S1216x1216
Equal Straight Connector 20mm	TR5-S1620x1620
Equal Straight Connector 25mm	TR5-S2025x2025
Equal Straight Connector 32mm	TR5-S2632x2632



Equal Straight Connector



Unequal Straight Reducing Connector



Male Straight Connector



Demountable Male Straight Connector

Unequal Straight Reducing Connector

Description	Product Number
Unequal Straight Reducing Connector 20-16mm	TR5-S1620x1216
Unequal Straight Reducing Connector 25-16mm	TR5-S2025x1216
Unequal Straight Reducing Connector 25-20mm	TR5-S2025x1620
Unequal Straight Reducing Connector 32-16mm	TR5-S2632x1216
Unequal Straight Reducing Connector 32-20mm	TR5-S2632x1620
Unequal Straight Reducing Connector 32-25mm	TR5-S2632x2025

Male Straight Connector

Description	Product Number
Male Straight Connector 16mm-1/2	TR5-S1216x1/2
Male Straight Connector 16mm-3/4	TR5-S1216x3/4
Male Straight Connector 20mm-3/4	TR5-S1620x3/4
Male Straight Connector 25mm-1	TR5-S2025x1
Male Straight Connector 32mm-1	TR5-S2632x1

Demountable Female Straight Connector

Description	Product Number
Demountable Female Straight Connector 16mm-1/2	TR5-S1216x1/2F(H)
Demountable Female Straight Connector 16mm-3/4	TR5-S1216x3/4F(H)
Demountable Female Straight Connector 25mm-1	TR5-S2025x1F(H)
Demountable Female Straight Connector 32mm-1	TR5-S2632x1F(H)

Press Fittings

Equal Elbow

Description	Product Number
Equal Elbow 16mm	TR5-L1216x1216
Equal Elbow 20mm	TR5-L1620x1620
Equal Elbow 25mm	TR5-L2025x2025
Equal Elbow 32mm	TR5-L2632x2632

Male Elbow

Description	Product Number
Male Elbow 16mm-1/2"	TR5-L1216x1/2
Male Elbow 16mm-3/4"	TR5-L1216x3/4

Wall Plated Female Elbow

Description	Product Number
Wall Plated Female Elbow 16mm-1/2"	TR5-L1216x12F(Z)

Radiator Elbow

Description	Product Number
Radiator Elbow 16-25mm	TR5-L1216x15S

Equal Tee

Description	Product Number
Equal Tee 16mm	TR5-T1216x1216x1216
Equal Tee 20mm	TR5-T1620x1620x1620
Equal Tee 25mm	TR5-T2025x2025x2025
Equal Tee 32mm	TR5-T2632x2632x2632



Equal Elbow



Male Elbow



Wall Plated Female Elbow



Radiator Elbow



Equal Tee

Press Fittings



Unequal Tee

Description	Product Number
Unequal Tee 16-25-16mm	TR5-T1216x2025x1216
Unequal Tee 20-16-20mm	TR5-T1620x1216x1620
Unequal Tee 25-16-25mm	TR5-T2025x1216x2025
Unequal Tee 25-20-25mm	TR5-T2025x1620x2025
Unequal Tee 32-16-32mm	TR5-T2632x1216x2632
Unequal Tee 32-20-32mm	TR5-T2632x1620x2632

Connector Core

Description	Product Number
Connector Core 16mm - 1/2"	TR5-C1216x1/2 IIA
Connector Core 16mm - 3/4"	TR5-C1216x3/4 IIA

Press Fit End Caps

Description	Product Number
End Cap 16mm	TR5-D1216
End Cap 20mm	TR5-D1620
End Cap 25mm	TR5-D2025
End Cap 32mm	TR5-D2632



Unequal Tee



Connector Core



Press Fit End Cap

Transition Fittings



Press Fit - Compression Copper Adaptors

Description	Product Number
Press-Compression 16-15mm	TR1-S1216x15 C
Press-Compression 20-22mm	TR1-S1620x22 C
Press-Compression 25-22mm	TR1-S2025x22 C
Press-Compression 32-28mm	TR1-S2632x28 C

Press Fit - Brass Tail Adaptors

Description	Product Number
Press-Brass Tail 16-15mm	TR5-S1216x15 BT
Press-Brass Tail 20-15mm	TR5-S1620x15 BT
Press-Brass Tail 25-22mm	TR5-S1620x22 BT
Press-Brass Tail 25-28mm	TR5-S2025x22 BT
Press-Brass Tail 25-28mm	TR5-S2025x28 BT
Press-Brass Tail 32-28mm	TR5-S2632x28 BT

Compression - Compression Copper Adaptors

Description	Product Number
Compression-Copper Adaptors 16-15mm	TR1-S1216x15 COM
Compression-Copper Adaptors 20-15mm	TR1-S1620x15 COM
Compression-Copper Adaptors 25-22mm	TR1-S2025x22 COM
Compression-Copper Adaptors 25-28mm	TR1-S2025x28 COM



Press - Brass Tail



Press-Compression



Compression-Compression

Compression Fittings

Male Terminal Adaptor

Description	Product Number
Male Terminal adaptor 16-15mm	TR1-MTA 1216x1/2

End Cap

Description	Product Number
End Cap 16mm	TR1-D1216 C

Equal Straight Connector

Description	Product Number
Equal Straight Connector 12mm	TR1-S0912x0912 C
Equal Straight Connector 16mm	TR1-S1216x1216 C

Male Straight Connector

Description	Product Number
Male Straight Connector 12mm-1/2"	TR1-S09012x1/2 C
Male Straight Connector 16mm-1/2"	TR1-S1216x1/2 C



Male Terminal Adaptor



Equal Straight Connector



Male Straight Connector



End Cap

Tools



Manual Pressing Tool Kit
with Adjustable
Clamp Head Sizes



Tacker Gun



Pipe Cutter



Pipe Decoiler
Bending Spring



Tools

Description	Product Number
Adjustable Length Manual Pressing Tool	SYQ-14-32U
16mm External Bending Spring	BS-1216
20mm External Bending Spring	BS-1620
25mm External Bending Spring	BS-2025
32mm External Bending Spring	BS-2632

UFH Accessories

Description	Product Number
1m Length Self-Adhesive Clip Rail	GRAIL-16-100
60mm UFH Pipe Staples x100	KU-60
50m Perimeter Edge Insulation	EI-50

UFH Accessories

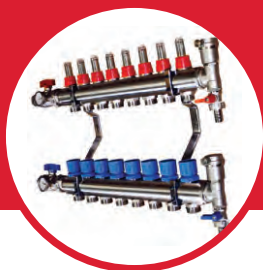
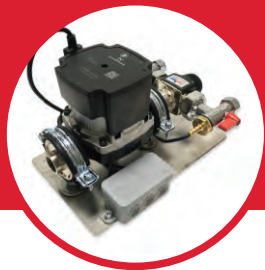
Description	Product Number
Tacker Gun for UFH Clips	Tacker 100
Pipe Decoiler	DECOILER 120
10mm, 12mm, 16mm Pipe Reamer	ZY0-10-12-16
16mm, 20mm, 25mm Pipe Reamer	ZY2-16-20-25
20mm, 25mm, 32mm Pipe Reamer	ZY3-20-25-32
12mm-32mm Multi-Layer Pipe Cutter	GJIII-1

Underfloor Heating Kit

ThermRite pre-packaged underfloor heating kits are designed for an easy order solution.

Each kit will include:

- * Pump & Mixing Valve
- * Multi-Layer Pipe
- * Digital Thermostat
- * Clips
- * Edge Insulation
- * Pipe Reamer
- * Pipe Cutter

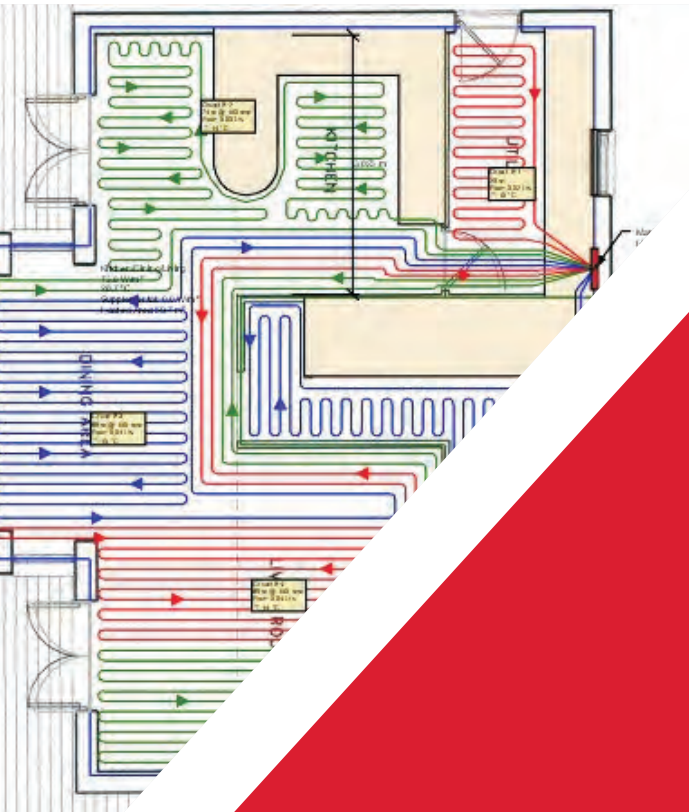


Description	Product Number
10sqm Single Zone UFH Kit	SZ-10
12sqm Single Zone UFH Kit	SZ-12
14sqm Single Zone UFH Kit	SZ-14
16sqm Single Zone UFH Kit	SZ-16
18sqm Single Zone UFH Kit	SZ-18
20sqm Single Zone UFH Kit	SZ-20
22sqm Single Zone UFH Kit	SZ-22
24sqm Single Zone UFH Kit	SZ-24
26sqm Single Zone UFH Kit	SZ-26
28sqm Single Zone UFH Kit	SZ-28
20sqm Multi Zone UFH Kit	MZ-20
30sqm Multi Zone UFH Kit	MZ-30
40sqm Multi Zone UFH Kit	MZ-40
50sqm Multi Zone UFH Kit	MZ-50
60sqm Multi Zone UFH Kit	MZ-60
70sqm Multi Zone UFH Kit	MZ-70
80sqm Multi Zone UFH Kit	MZ-80
90sqm Multi Zone UFH Kit	MZ-90
100sqm Multi Zone UFH Kit	MZ-100
120sqm Multi Zone UFH Kit	MZ-120
140sqm Multi Zone UFH Kit	MZ-140
160sqm Multi Zone UFH Kit	MZ-160
180sqm Multi Zone UFH Kit	MZ-180
200sqm Multi Zone UFH Kit	MZ-200
220sqm Multi Zone UFH Kit	MZ-220
240sqm Multi Zone UFH Kit	MZ-240

BESPOKE DESIGN SERVICE

Design and Consultation Service:

Accurate design and a detailed understanding of our customers' requirements are an essential foundation of a great bespoke underfloor heating system. Our in-house design team utilise market leading design software to calculate heating requirements and produce bespoke underfloor heating system for each application. A full CAD pipe layout is tailored to each individual customers requirements to ensure every design perfectly suits the required concept and criteria behind their bespoke system.



CONTACT OUR TEAM

Contact us today and we can provide you with the information, understanding and underfloor heating system that is most suitable to bring comfort and warmth to your projects and homes. Whether it is for a new build, or a retrofit system where overlay systems can be placed on top of existing floors, we have the products and solutions for you!

01625 912220 | info@thermrite.co.uk





Market Leading Underfloor Heating Systems

Unit B | Radnor Park | Back Lane |
Congleton | Cheshire | CW12 4XJ

01625 912220
info@thermrite.co.uk

www.thermrite.co.uk