

INVENTIVE

Roof ventilation solutions

RTV-IS | Inline Slate Vent

Inline Slate Vent to enable ventilation directly into a roof space or connect to a ducted ventilation system

Uses

- On roofs with Natural or Synthetic Slates
- Enables ventilation directly into a roof space
- Can also be connected to a ducted ventilation system inside the building

Features and Benefits

- Suitable for roofs with a minimum pitch of 22.5°
- Free ventilation area of 9,450mm².
- Sized to replace one slate to provide a continuous visual appearance along the roof when viewed at all levels
- Shaped to manage and channel rainwater back down onto the roof tiles and away from the vent opening
- Provides a 110mm duct connection as standard with the optional RTV-ADIS duct adapter
- 4mm spaced external grille to prevent rainwater ingress and keep out large insects, vermin and debris
- Lightweight and easy to handle

Relevant Standards

- BS EN 490:2011 Concrete roofing tiles and fittings for roof covering and wall cladding - product specifications (+A1:2017)
- BS 5250: 2021 Management of moisture in buildings – Code of practice
- BS 5534:2014 Slating and tiling for pitched roofs and vertical cladding – code of practice (+A2:2018)
- Manufactured to BS EN ISO 9001:2015 and BS EN ISO 14001:2015
- Complies with all relevant sections of the Building Regulations 2010
- Satisfies all relevant NHBC requirements

Compatibility

Natural or Synthetic slates in sizes 600mm x 300mm or 500mm x 250mm from all major manufacturers.

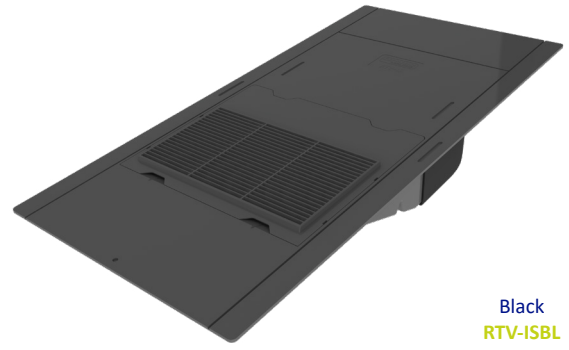
Material and Colour Choice

- Injection moulded Polypropylene with textured finish
- Available in Black

Product Codes

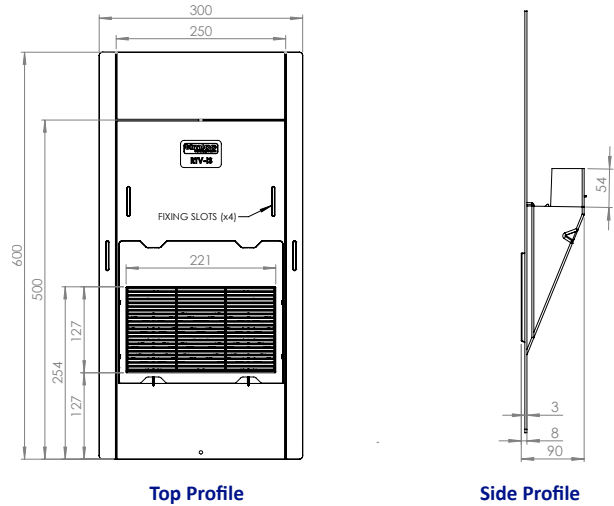
Product Description	Colour	Weight	Box Quantity	Product Code	Pack Quantity	Pack Code	Pallet Quantity
Inline Slate Vent	Black	0.78kg	1	RTV-ISBL	5	RTV/MULTI-ISBL	120

NB. RTV-ISBL available in single, pack or pallet quantities. For pack quantities, 5 Inline Slate vent assemblies are packaged in one large box.



Black
RTV-ISBL

Product Dimensions



Top Profile

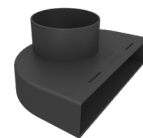
Side Profile

Airflow Test Data

RTV-IS (100mm duct)	
Flow Rate l/s	Static pressure difference Pa
10	2
20	8
30	19
40	34

Accessories

- Full datasheets available for all accessories
- 110mm Flexi-Pipe (RTV-KIT1) to aid connection to ventilation duct or soil vent pipe
- Inline Slate adapter (RTV-ADIS) to attach the roof tile vent to 110mm ductwork
- Multi adapter (RTV-ADMULTI) to aid connected to 100/110/125/150mm duct sizes
- RTV-ADIS and RTV-KIT1 available as one kit (RTV-KIT4)



Inline Slate Adapter
RTV-ADIS



Multi Adapter
RTV-ADMULTI



110mm Flexi-Pipe
RTV-KIT1