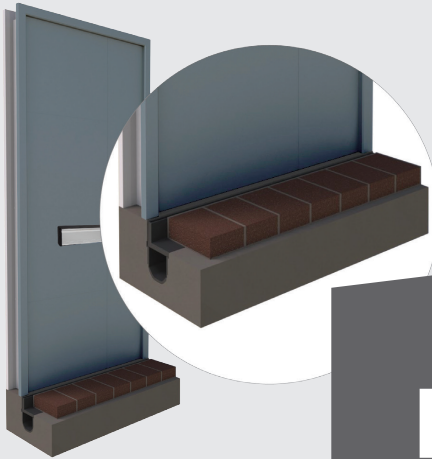




ej

ejco.com



LIBERTY DRAIN™

Lib Slot Domestic

BS EN 1433

Features & Benefits

A quality, discreet drainage channel for domestic block paved areas, commonly used in front of door thresholds.

- Ideal for domestic, threshold and light vehicle areas only
- Can handle a flow rate of 4.5 l/s
- 100% recycled polypropylene, so light & easy to install
- Base tested to BS EN 1433
- Positive mechanical joint between each channel length
- Can be installed with block paving or concrete surround

Product Range

Product Code	Description
Lib Slot Dom	1m slot drain channel, 2 x 0.5m grates
Lib Slot EC	End cap
Lib Slot EC/110	110mm base outlet
Lib Slot QD	Quad connector



How to install LIB SLOT Domestic



Installation Instructions

The LIB SLOT Domestic should be fitted in complete lengths. If it is necessary to cut a length of channel, the cut should be made at the end of the line and an end cap or outlet bonded at this point with waterproof mastic.

1. Excavate a trench 330mm wide (230mm wide if adjacent to a structure) by 240mm deep. Create a 50mm deep compacted sand base to bed the channel, or a 50mm concrete base if installed in a trafficked area. A minimum of 100mm concrete 'haunch' on each side of the channel is required to provide maximum stability.
2. Use a 'string line' in the line of dig to align the channel unit, setting the height of the grate at between 3-5mm below the final surface level.
3. Set at a slight gradient if conditions permit.
4. Install an end cap at the start or highest point of the channel.
5. The end or lowest point of the channel drain should be connected to a 110mm pipe (BS EN 1401) using either the end outlet or base outlet. The outlet pipe will need connecting to either a surface water drain or soakaway
6. Ensure that the slot grate is firmly connected to the base, and backfill using concrete. The channel will not need securing down provided the concrete is poked during the process to ensure it encapsulates the anti-flotation plates on the molding. Constant checks should be made to ensure the channel hasn't moved.
7. Once cured, the surface area can be constructed over the channel base. A 12mm layer of compacted sand should be applied in preparation for the block paving. Block paving can now be positioned up to the slot.

Note: Surfacing such as tarmac should be installed with due care, to protect the channel unit from possible heat distortion.

