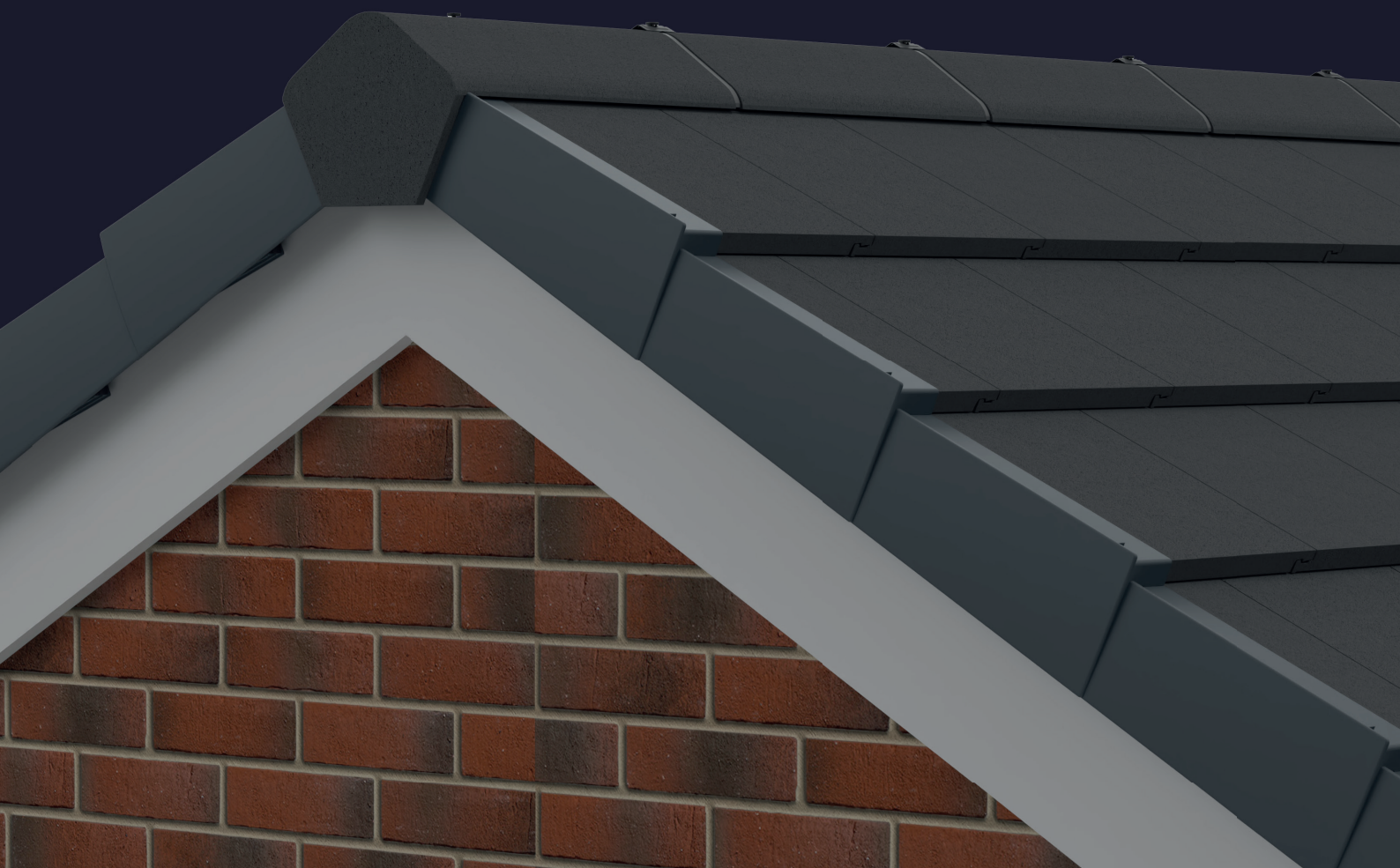


DANUM TLE

DRY VERGE

INSTALLATION GUIDE



The Sandtoft Danum TLE Dry Verge system has been specifically designed to suit the concrete large format Danum TLE tile.

The system is extremely quick and easy to fit and available in 3 colours to compliment the tile.

Components

Verge unit

(left and right handed versions available)

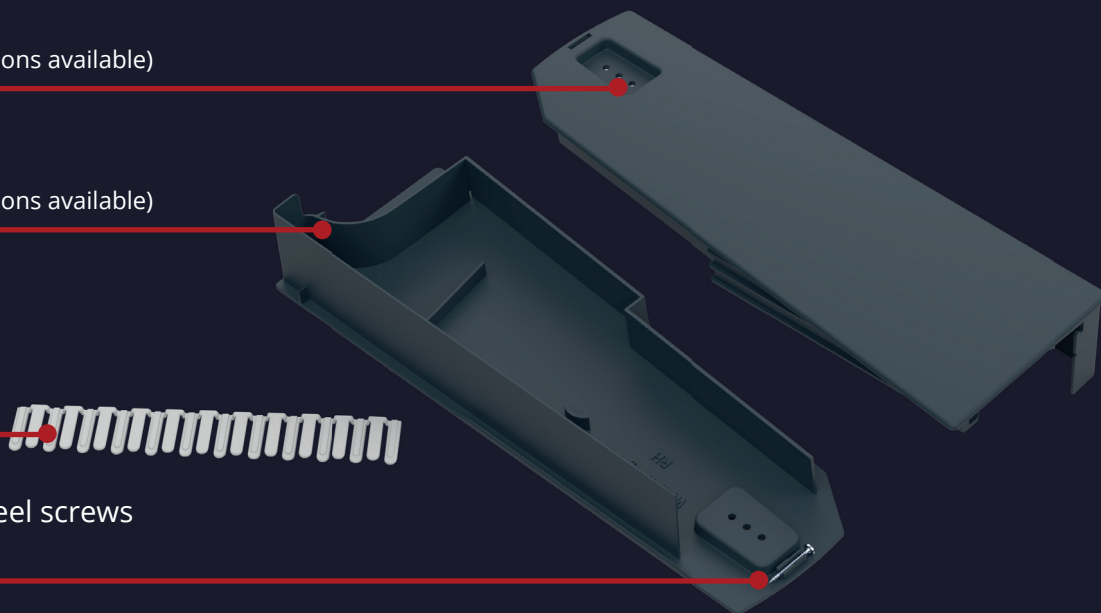
Eaves unit

(left and right handed versions available)

Ridge Closure Comb

35 x 4mm stainless steel screws

(attached to each unit)



Compatibility

Danum TLE

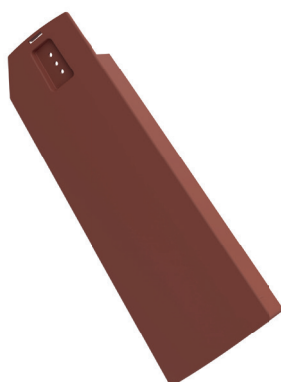
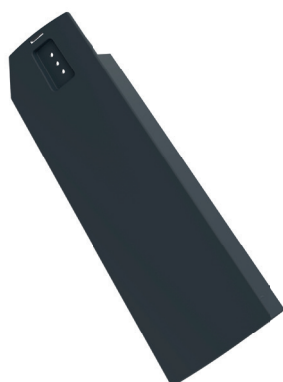
Dual Danum TLE

Colours

Dark Grey

Red Multi

Brown



Due to different computer monitors/calibrations the images shown may not be an accurate representation of the final products colour.

Installation

Before installation please note; the Sandtoft Danum TLE Dry Verge system is not intended to be waterproof. Rainwater running off the roof at the verge will run through the verge units (particularly when used with flat tiles) and drip from the underside of the verge units. Installing each batten and eaves unit

correctly will ensure the verge is sufficiently placed away from the gable wall to minimise any staining risks.

The use of a bargeboard with flat tiles will also help to minimise the risk of water staining on the gable wall.

- 1) Install a batten directly behind the fascia board with a 30mm extension from the bargeboard.

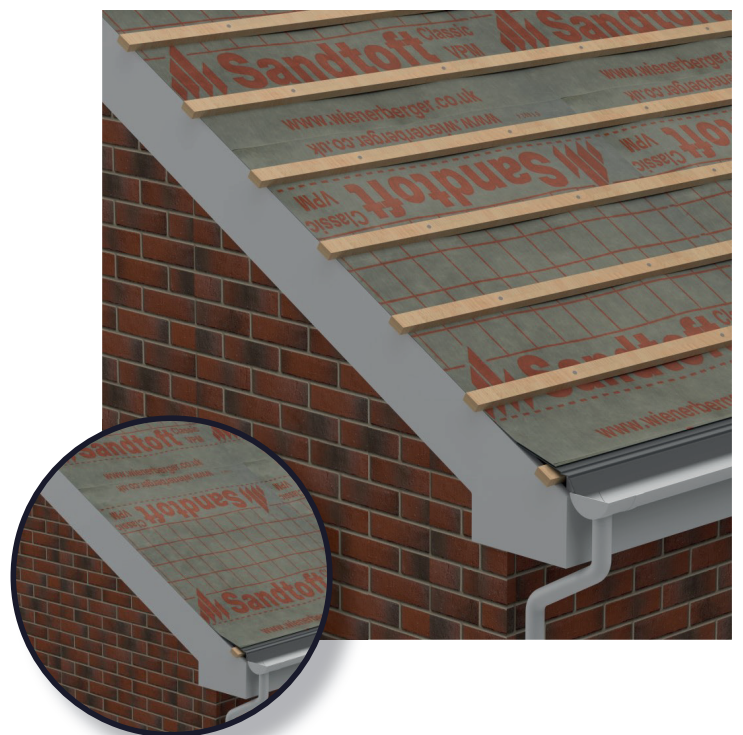
This will allow the eaves unit to have the required secondary fixing.



- 2) Lay the underlay in the usual way, allowing a 25mm overhang at the verge. Set out the tile battens at the appropriate gauge for the tile.

Extend each batten 30mm beyond the outer edge of the wall or the bargeboard and fix. This dimension positions the verge units approximately 5mm off the wall or bargeboard.

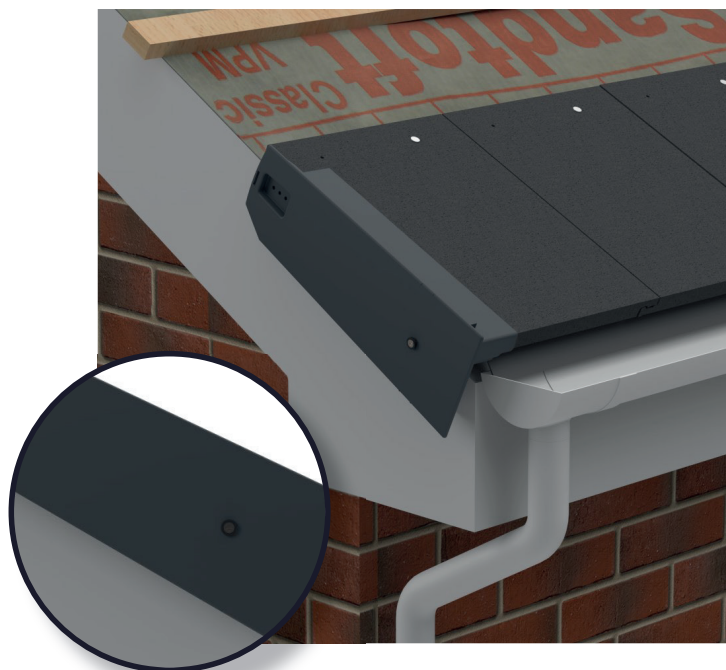
Alternatively, extend each batten 5mm beyond the outer edge of the wall or the bargeboard and install a 25mm thick vertical batten. Ensure that you fit the batten the correct way round to ensure the total dimension between the wall or bargeboard and the edge of your batten is 30mm.



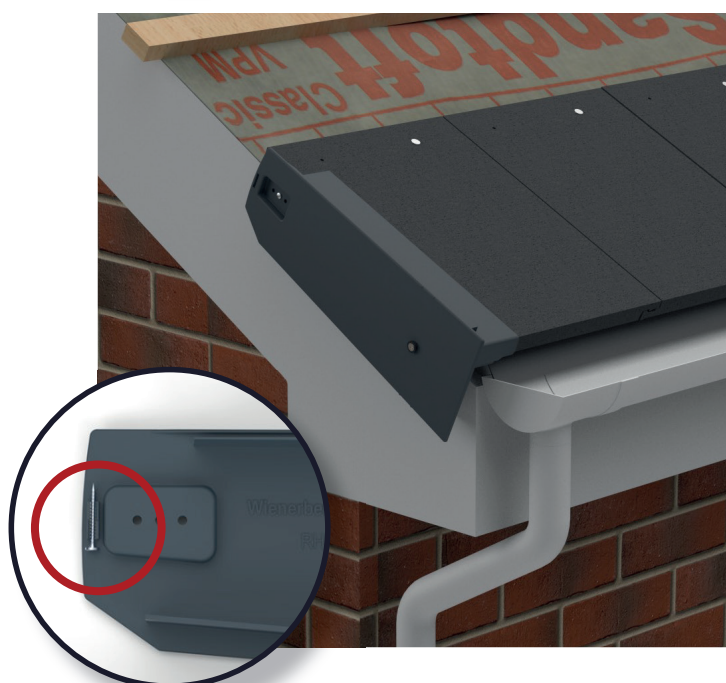
- 3) Position an eaves course tile at the verge with the correct overhang over the eaves and verge. Locate the eaves unit onto the tile as shown.

Using the markers shown on the unit securely fix the eaves unit to the batten placed in step 1) with a screw no less than 60mm in length (screws - not supplied).

Screw caps can be used in addition to the fixing if it is desired that the fixing be hidden (not supplied).



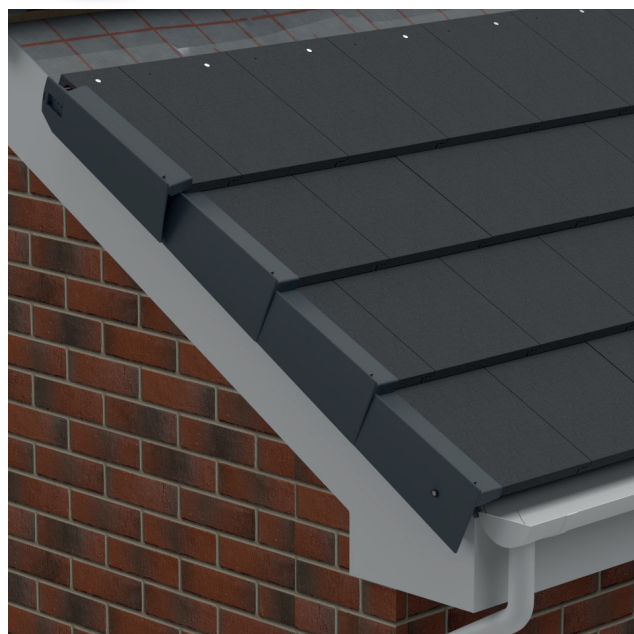
- 4) Screw through the central fixing hole into the centre of the tile batten using a 35 x 4mm stainless steel screw (supplied in the verge unit).



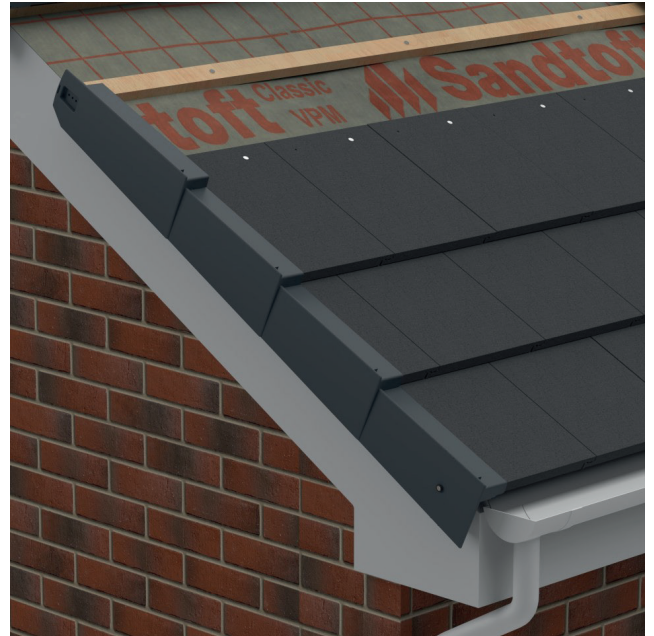
The verge unit is versatile and can be installed in several ways: (see below)

- 5a) This method is the recommended way to install the unit with a standard installation.

Hook the underside of the unit under the unit below. Lift the unit over the next unit and click into place.



5b) Alternatively the unit can be slid into place prior to the next course of tiles.



Note: When placing the unit ensure the flap is connected to the unit below as shown.

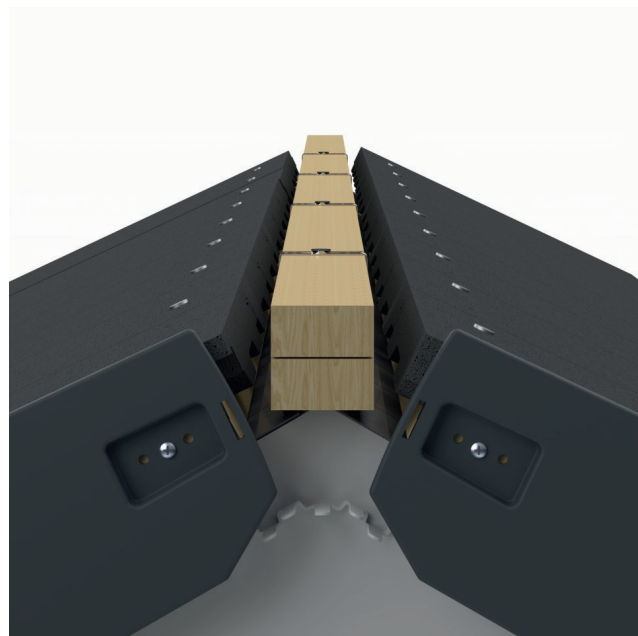


Note: Ensure the unit is clipped into the next unit before moving on.



- 6) Before inserting the top course verge units into their final positions locate the ridge closure comb onto the lower edges of each verge unit as shown. This will close the gap between the verge units and the wall. If you are using a plastic ridge end cap the ridge closure comb is not required.

For some roof pitches it may be necessary to cut the top course verge units to form a mitre either side of the ridge apex.



- 7) Start/terminate the ridge with a block end ridge tile or plastic ridge cap to cover the top of the verge units.



Sandtoft Technical Support

T 0330 3830 379

E sandtofttechnical@wienerberger.com

Sandtoft Roof Tiles

Belton Rd
Sandtoft
Doncaster
DN8 5SY

T 01427 871 200

sandtoftorders@wienerberger.com

www.wienerberger.co.uk