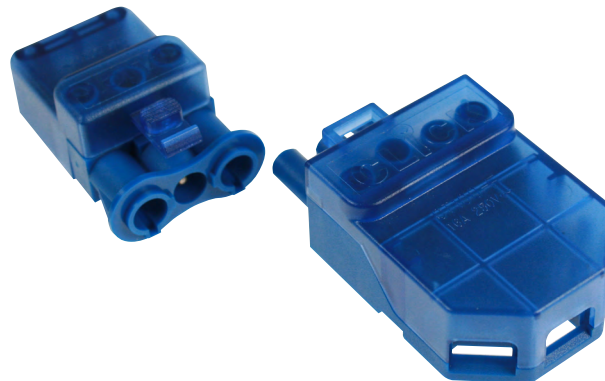


Product Code: CT101C

Luckinslive 392590561

Description: 250V~ 20A 3 Pole Complete Connector



## General Information

CT100F Dimensions (mm)	68 (W) x 40 (D) x 22 (H)	
CT101M Dimensions (mm)	52 (W) x 30 (D) x 22 (H)	
Minimum Aperture Diameter (mm)	46	
<b>Materials</b>	Cover: Polycarbonate	Base & Terminal Housing: Nylon (PA66)
	Terminals: Silver Plated Brass	Terminal Screws: Steel and Yellow Passivated
Operating Voltage (AC)	250	Frequency (Hz) 50
Resistive Load Rating (A)	20	
Rated Impulse Voltage (kV)	4	
Recommended Inner Core Strip Length (mm)	Male: L&N: 20; E: 28; Female: L&N: 35; E: 43	
Recommended Conductor Strip Length (mm)	10	
Termination Type	Screw	
Terminal Size (mm)	Ø4.2	Terminal Torque Value (Nm) 0.8
Terminal Capacity - Solid (mm²)	3 x 2.5	
Terminal Capacity - Flex (mm²)	3 x 1.5	
Termination Layout (Male)	(CT101M) N - E - L	
Termination Layout (Female)	(CT100F) L - E - N - Loop	
Cable Restraint Supplied	On Male Only	
Ingress Protection	IP20	
Operational Temperature (°C)	-5 to +40	
Warranty (Years)	20	

**Standards** BS 5733

## Additional Information

For cleaning / polishing of products, use only a soft, dry, clean cloth.  
 Ensure that the mains supply is isolated before commencing installation.  
 Always refer to the circuit diagram supplied with the relevant product.  
 Bare earth cables must always be covered with appropriate sleeving and wired to the earth terminal.  
 Pre-fabricating wiring systems manufactured to BS 8488 by other manufacturers may not be compatible or safely inter-connectable with this system. Any dangerous compatibility between different manufactures installation coupler systems is not automatically prevented by compliance with IEC 61535.





Product Code: SKU

# Technical Specification



```
@@if LuckinsTSICode
{LuckinsTSICode} <>
"@@Luckinslive@@
endif@@
```

Description: Description

## Wiring Example

MALE - CT101M

FEMALE - CT100F



UK Design Register Registered

Catalogue



Range



DoC



Installation

