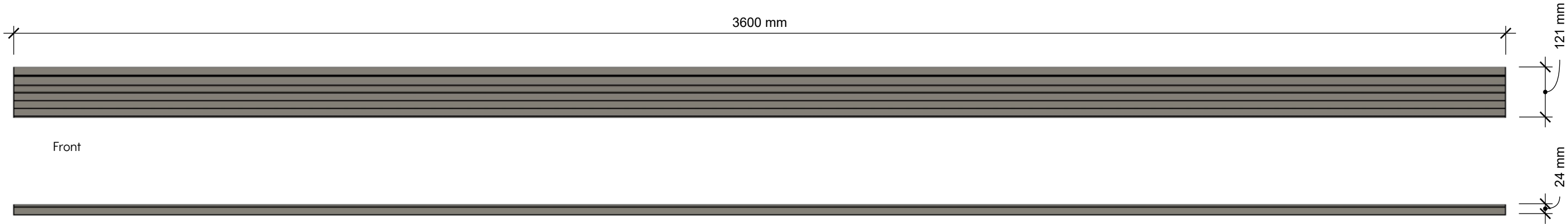
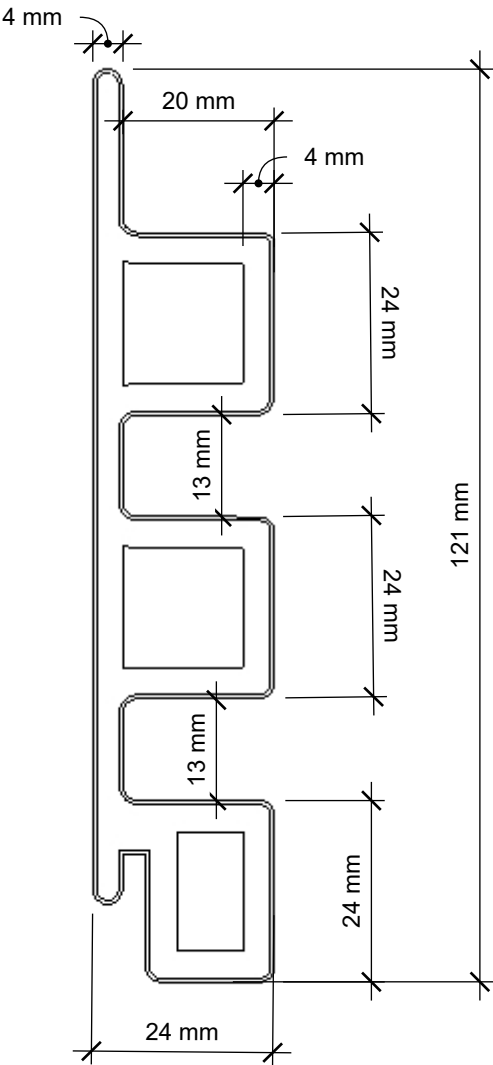


Do not scale from this drawing.
The Contractor shall be responsible for checking dimensions, tolerances & references.
Discrepancies to be verified with Ecoscpae UK before commencement of works.



Front

Side
Scale 1:10



Section
Scale 1:1

Iso
Scale 1:1



Ecoscape Forma Slatted Cladding Board

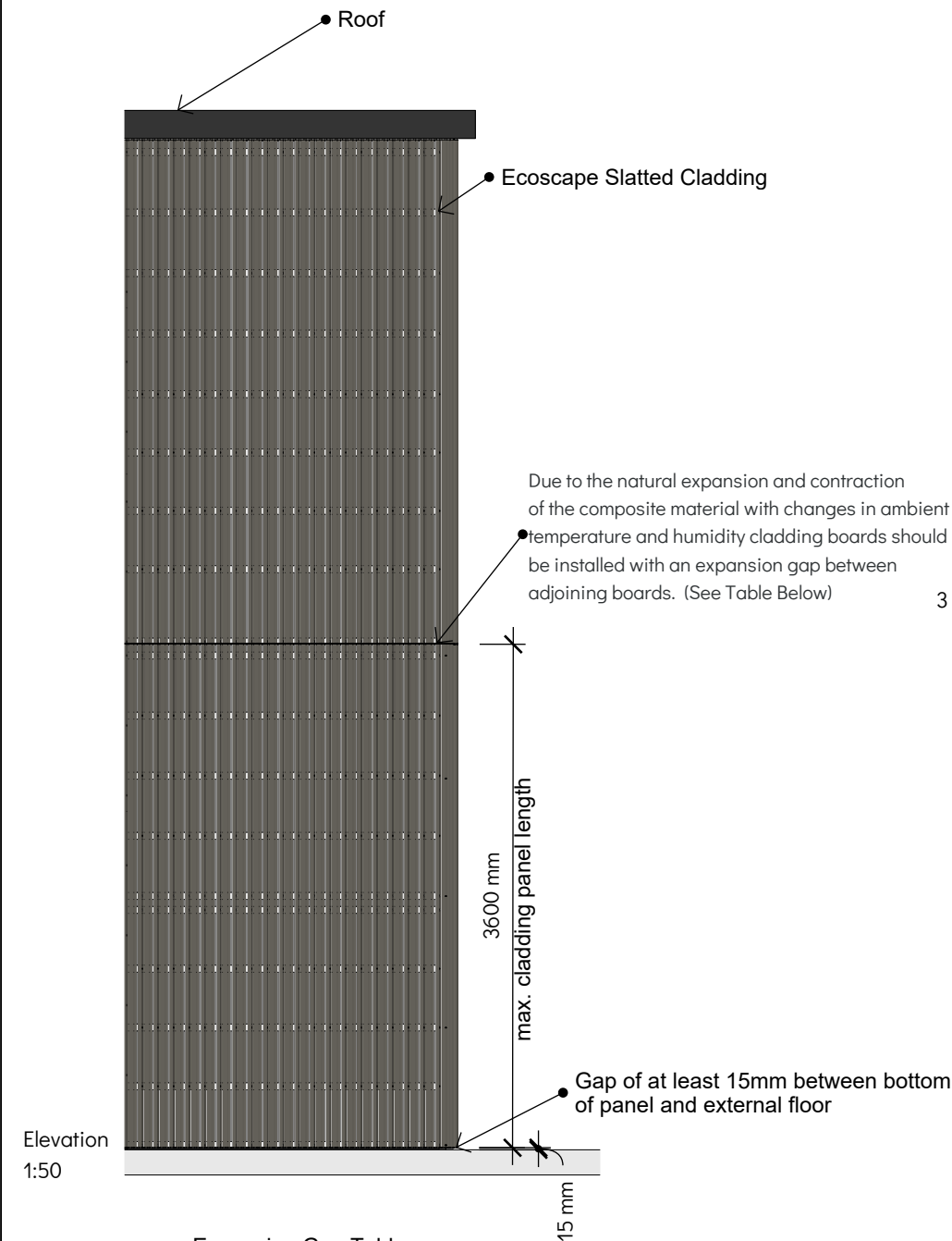
Material: Wood Plastic Composite
Finish: Brushed Finish
Slatted with 24mm Batten

Product Variants:

	Midnight	Silver Birch	Spiced Oak	Argent	Light Oak	Natural Oak
2500mm	ECOSLATMD25	ECOSLATSB25	ECOSLATSB25	ECOSLATAR25	ECOSLATLO25	ECOSLATNO25
3600mm	ECOSLATMD	ECOSLATSB	ECOSLATSO	ECOSLATAR	ECOSLATLO	ECOSLATNO

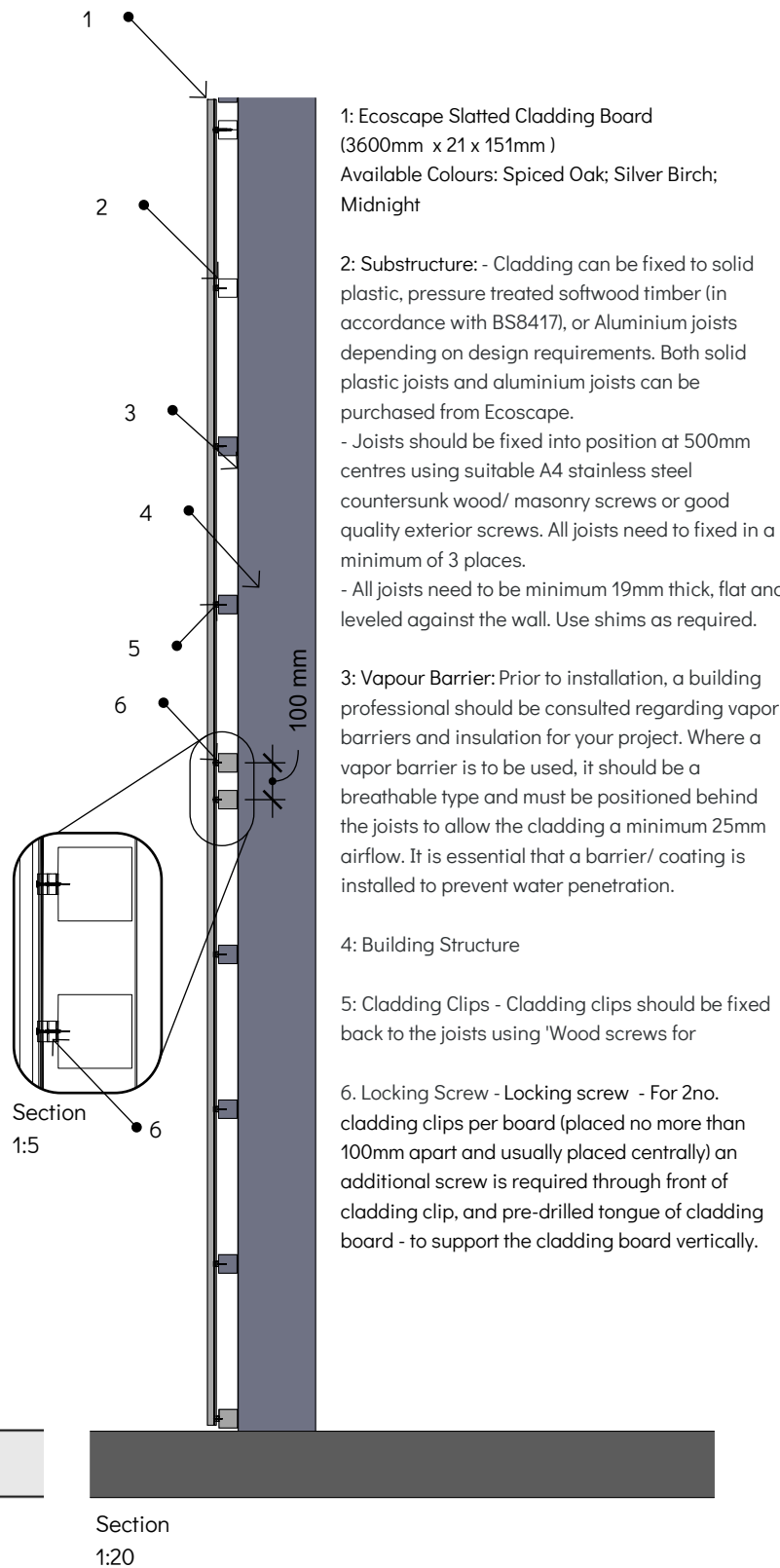
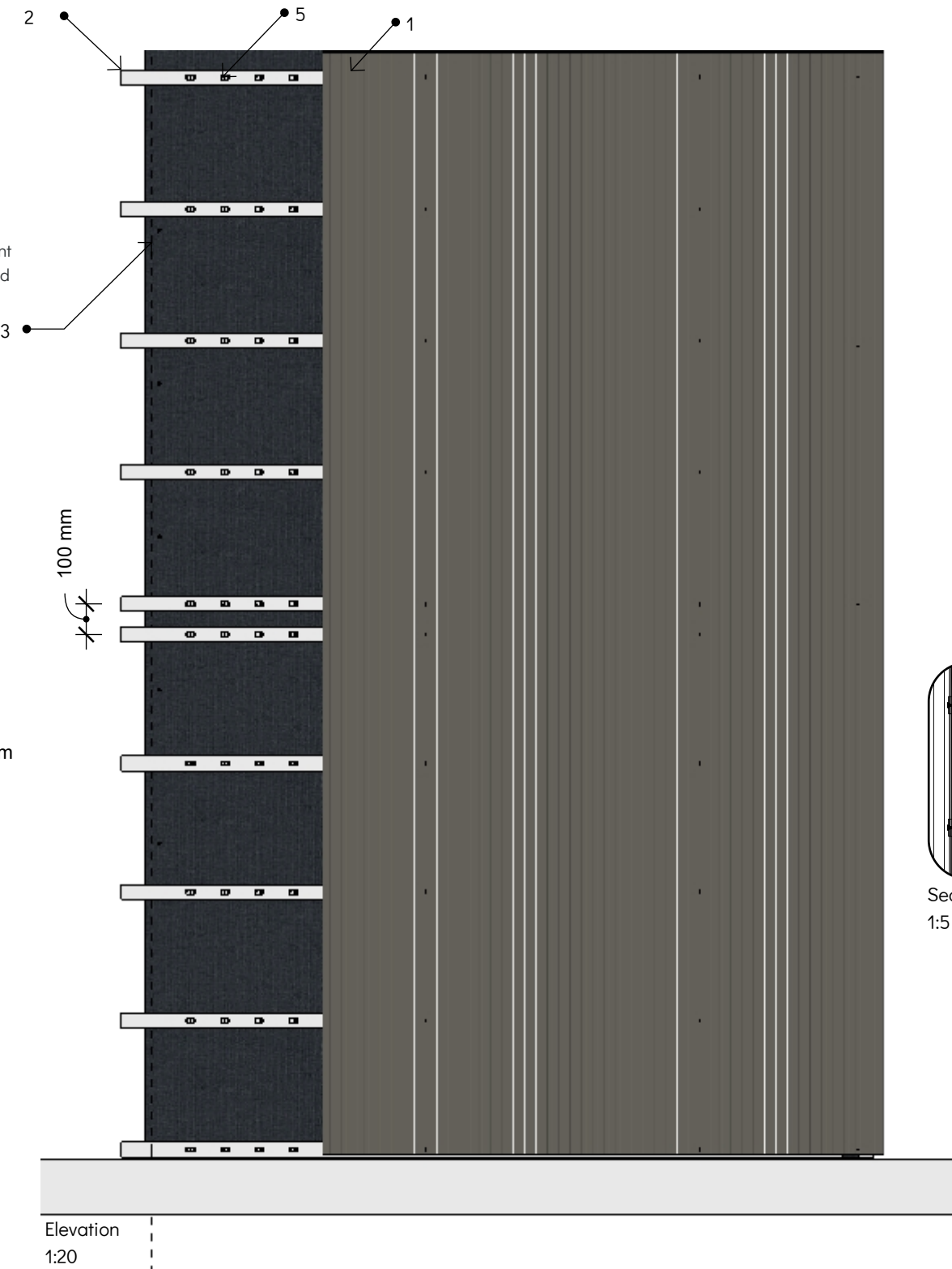
© 2024 Ecoscape UK Ltd

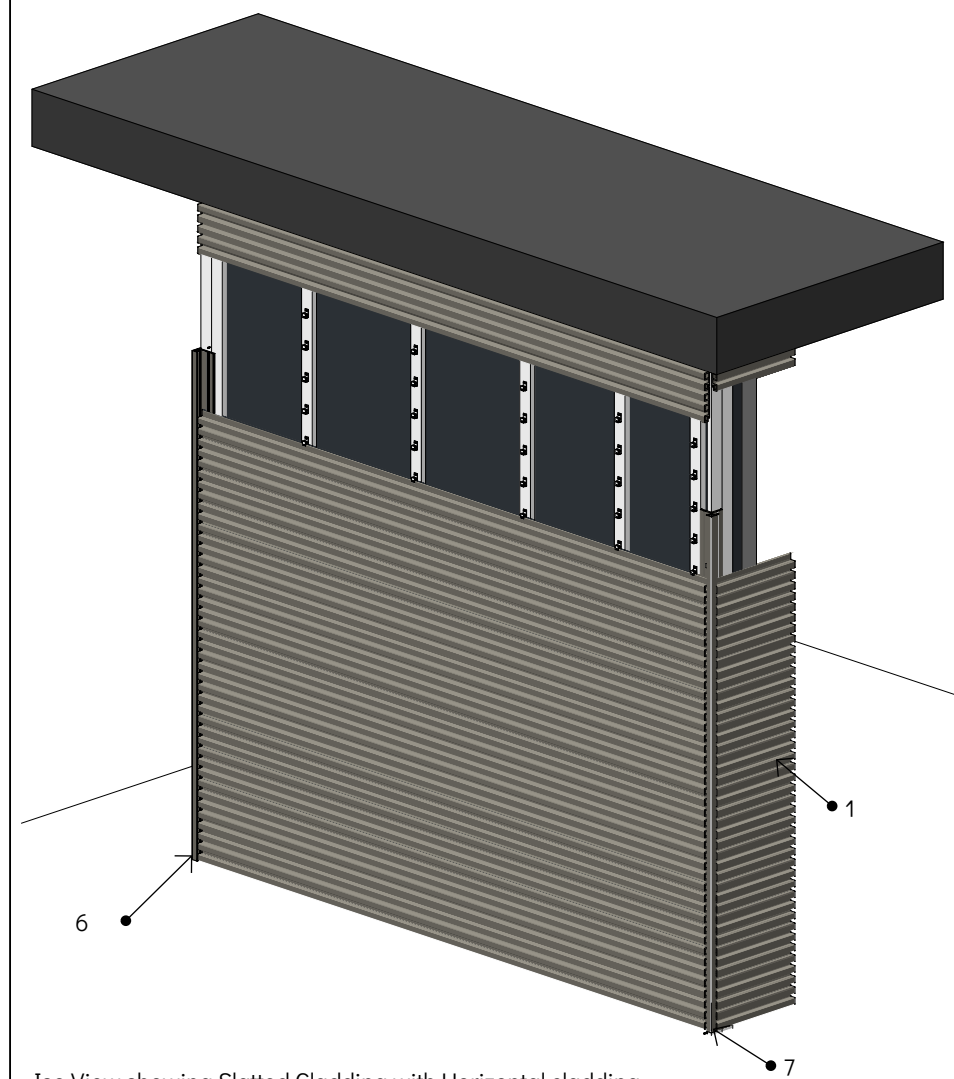
Slatted Cladding Vertical Orientation
Typical Detail



Expansion Gap Table

Length (Meters)		1	2.44	2.8	3	3.66	3.9	4	4.88	5.4	Gap (mm)
Installation Temperature (°C)	-10	2.4	5.9	6.7	7.2	8.8	9.4	9.6	11.7	13.0	
	-5	2.2	5.4	6.2	6.6	8.1	8.6	8.8	10.7	11.9	
	0	2.0	4.9	5.6	6.0	7.3	7.8	8.0	9.8	10.8	
	5	1.8	4.4	5.0	5.4	6.6	7.0	7.2	8.8	9.7	
	10	1.6	3.9	4.5	4.8	5.9	6.2	6.4	7.8	8.6	
	15	1.4	3.4	3.9	4.2	5.1	5.5	5.6	6.8	7.6	
	20	1.2	2.9	3.4	3.6	4.4	4.7	4.8	5.9	6.5	
	25	1.0	2.4	2.8	3.0	3.7	3.9	4.0	4.9	5.4	
	30	0.8	2.0	2.2	2.4	2.9	3.1	3.2	3.9	4.3	
	35	0.6	1.5	1.7	1.8	2.2	2.3	2.4	2.9	3.2	
	40	0.4	1.0	1.1	1.2	1.5	1.6	1.6	2.0	2.2	



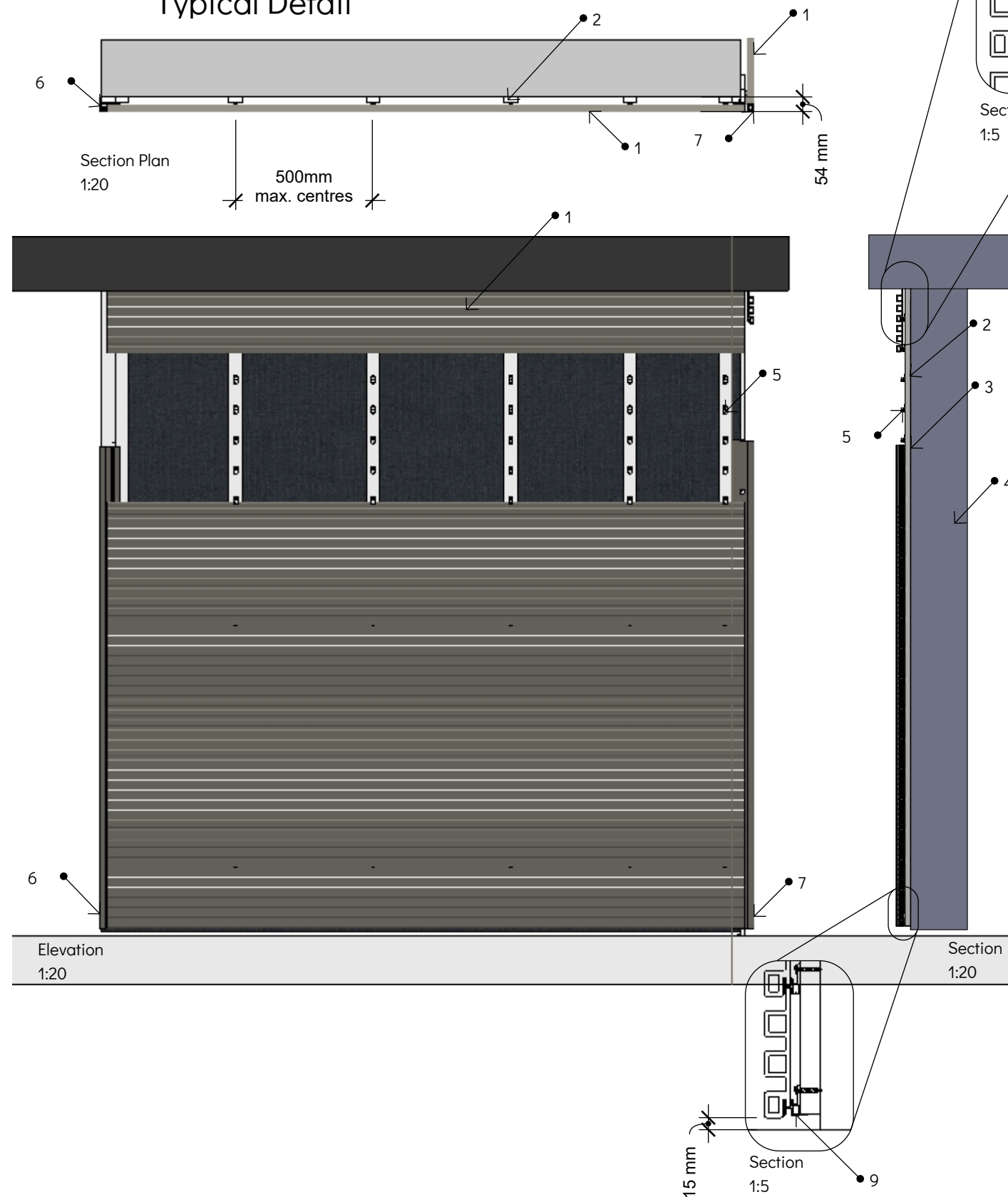


Iso View showing Slatted Cladding with Horizontal cladding (some boards removed to show substructure below) 1:50

Expansion Gap Table

		Length (Meters)										Gap (mm)
		1	2.44	2.8	3	3.66	3.9	4	4.88	5.4		
Installation Temperature (°C)	-10	2.4	5.9	6.7	7.2	8.8	9.4	9.6	11.7	13.0		
	-5	2.2	5.4	6.2	6.6	8.1	8.6	8.8	10.7	11.9		
	0	2.0	4.9	5.6	6.0	7.3	7.8	8.0	9.8	10.8		
	5	1.8	4.4	5.0	5.4	6.6	7.0	7.2	8.8	9.7		
	10	1.6	3.9	4.5	4.8	5.9	6.2	6.4	7.8	8.6		
	15	1.4	3.4	3.9	4.2	5.1	5.5	5.6	6.8	7.6		
	20	1.2	2.9	3.4	3.6	4.4	4.7	4.8	5.9	6.5		
	25	1.0	2.4	2.8	3.0	3.7	3.9	4.0	4.9	5.4		
	30	0.8	2.0	2.2	2.4	2.9	3.1	3.2	3.9	4.3		
	35	0.6	1.5	1.7	1.8	2.2	2.3	2.4	2.9	3.2		
	40	0.4	1.0	1.1	1.2	1.5	1.6	1.6	2.0	2.2		

Slatted Cladding Horizontal Orientation Typical Detail



1: Ecoscape Slatted Cladding Board (3600mm x 21 x 151mm)
Available Colours: Spiced Oak; Silver Birch; Midnight

2: Substructure: - Cladding can be fixed to Ecoscape solid plastic joists, or pressure treated softwood timber* (in accordance with BS8417), or Aluminium joists depending on design requirements.
- Joists should be fixed into position at 500mm centres using suitable A4 stainless steel countersunk wood/ masonry screws or good quality exterior screws. All joists need to be fixed in a minimum of 3 places.
- All joists need to be minimum 19mm thick, flat and leveled against the wall. Use shims as required.

3: Vapour Barrier: Prior to installation, a building professional should be consulted regarding vapor barriers and insulation for your project. Where a vapor barrier is to be used, it should be a breathable type and must be positioned behind the joists to allow the cladding a minimum 25mm airflow. It is essential that a barrier/ coating is installed to prevent water penetration.

4: Building Structure

5: Cladding Clips - The centre of each cladding board should be supported by double joists - spaced at 50mm apart - which should be fixed with 2no. colour-coded screws -fixed through the recess into pre-drilled and countersunk holes.

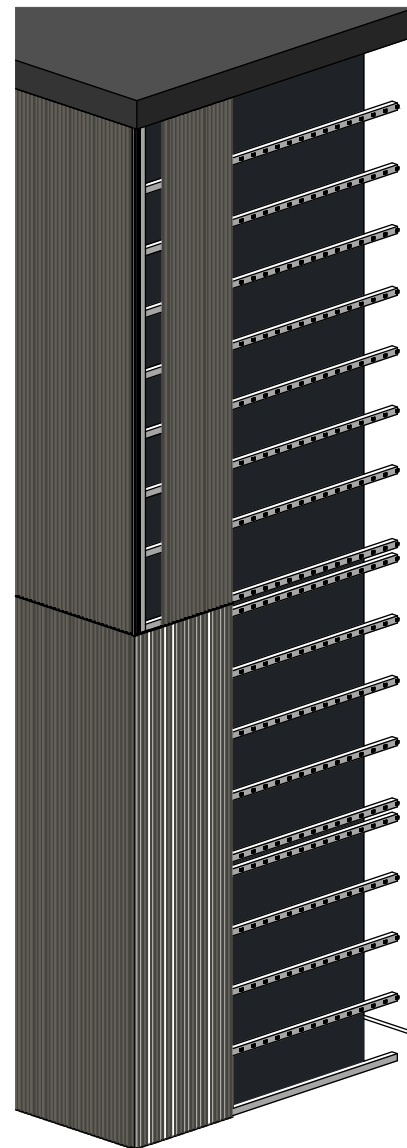
6: End Trim - to be fixed back to joist with good quality exterior screw. Cladding to be fixed to trim using Ecoscape Colour-coded screws (into recess), ensuring cladding is pre-drilled and countersunk.

7: Corner Trim - to be fixed back to joist with good quality exterior screw. Cladding to be fixed to trim using Ecoscape Colour-coded screws (into recess), ensuring cladding is pre-drilled and countersunk.

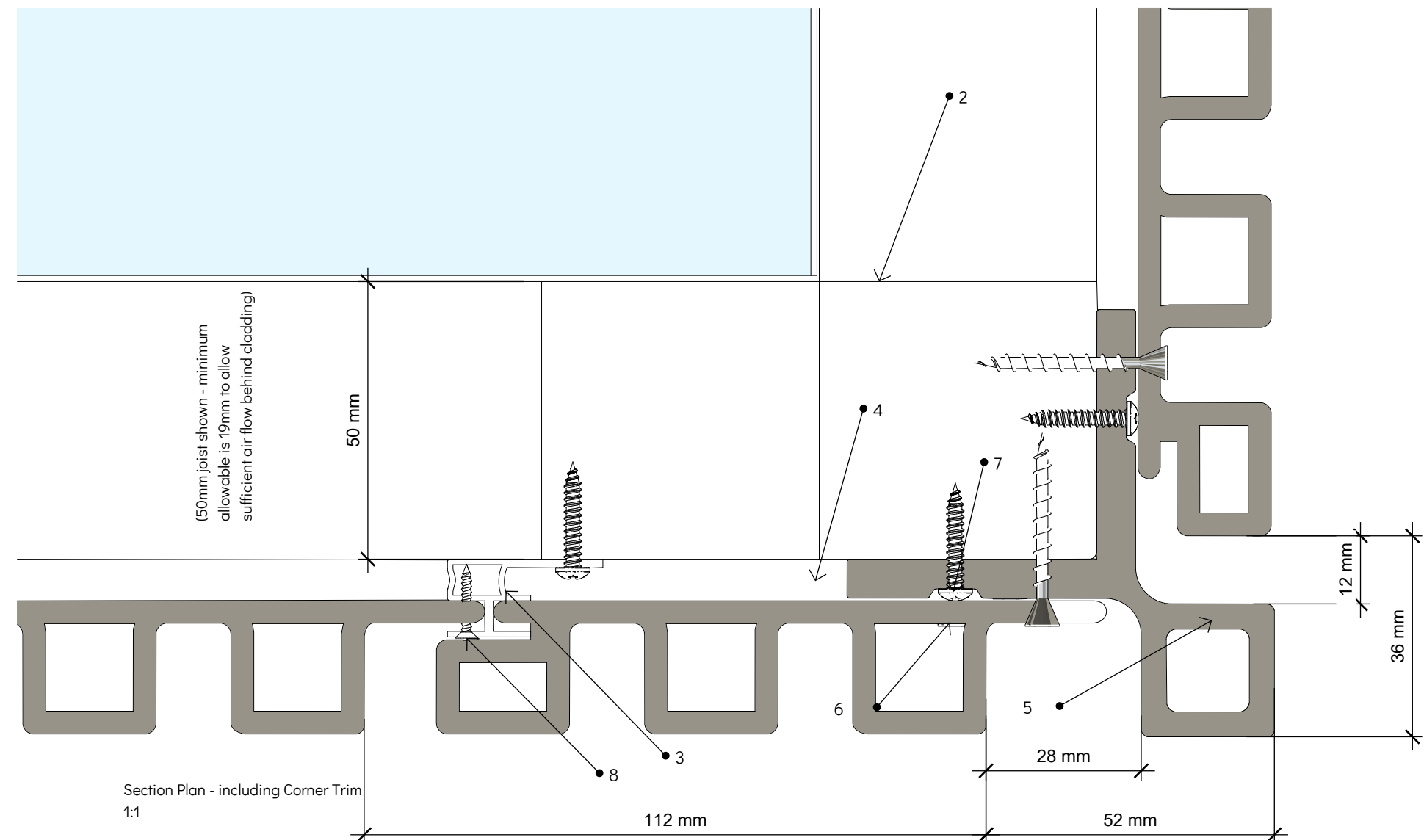
8: Plastic Pad - Where end trims are not used, the uppermost cladding board may be secured using a plastic pad and colour coded screw (pre-drilled and countersunk) through each joist)

9: Starter Bar - when cladding is installed in horizontal orientation - starter bar should be used in place of cladding clips for mounting the lowermost cladding board, ensuring a gap of 15mm between bottom of cladding and the floor, to avoid excessive moisture absorption.

Slatted Cladding Corner Trim Typical Fixing Detail

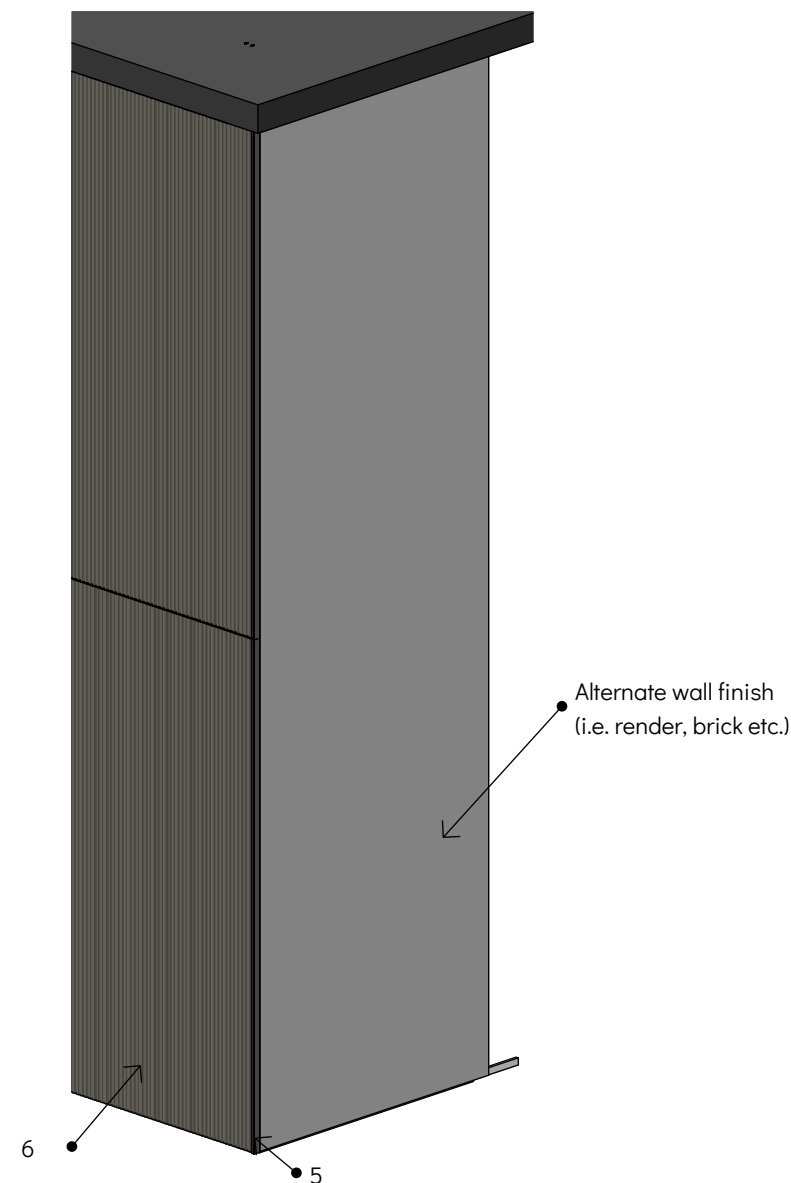


Iso: Cladding Corner Detail - shown
with some cladding boards removed to show joist
substructure below
1:50

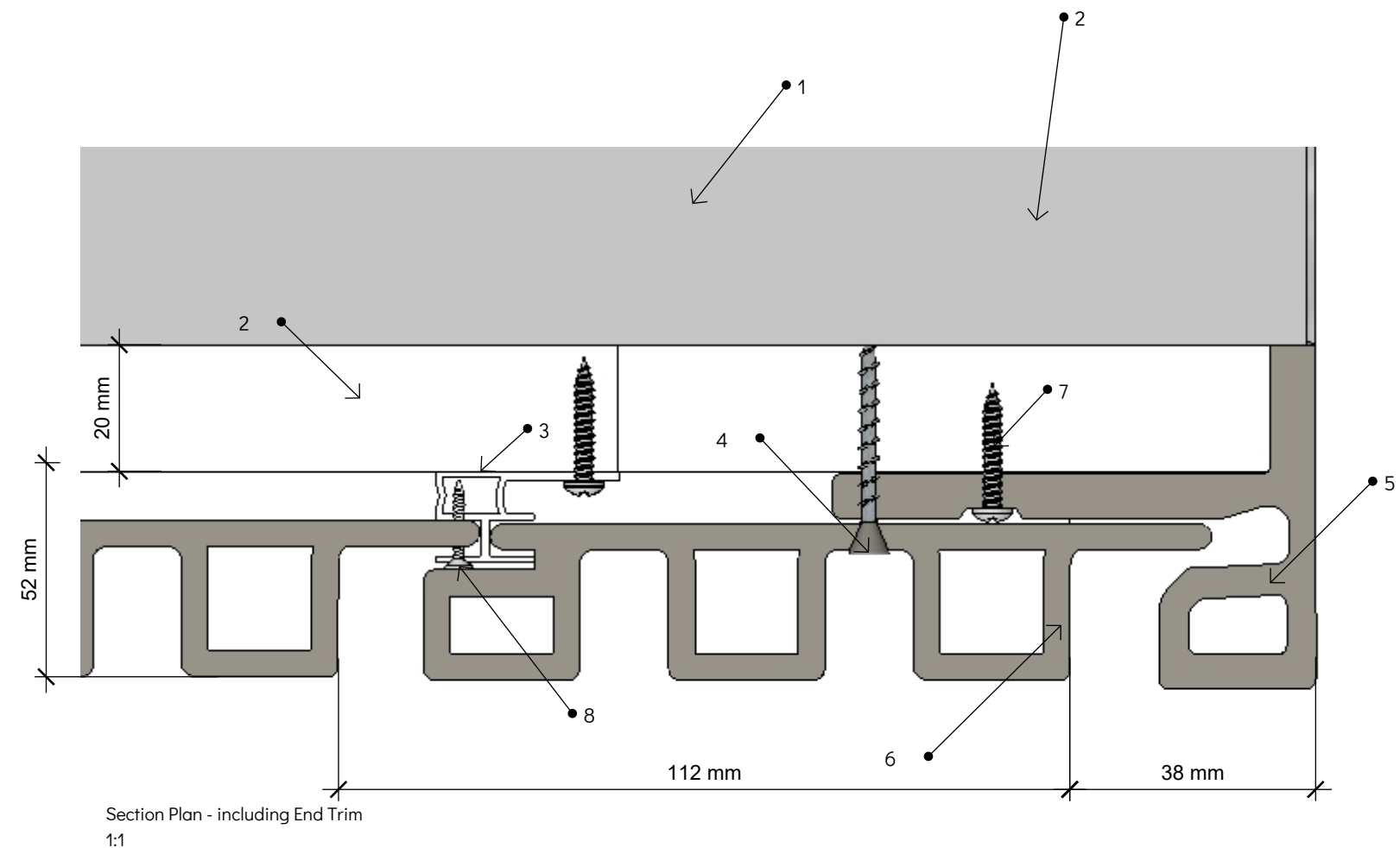


- 1: Building Wall Structure
- 2: Joists - Double joist detail required at wall corners - to allow cladding board. 50 x 50mm timber joist shown
(N.B. Where using timber joists, it is recommended that the joists are protected using EcoTape decking and cladding substructure protection tape), applied to any adjacent surface directly adjacent to masonry, and to front and top face of timber cladding substructure)
- 3: Cladding Clips - 1 per joist - fixed to joist using 'Wood Screws for Cladding'
- 4: Colour-coded screw - to recess of the adjacent first cladding board. (Ensure all holes are pre-drilled and countersunk)
- 5: Ecoscape Slatted Cladding Corner Trim
- 6: Ecoscape Slatted Cladding Board
- 7: Colour-coded screw - To fix corner trim - applied into recess - at no more than 1000mm centres vertically. (Ensure all holes are pre-drilled and countersunk)
- 8: Locking screw - For 2no. adjacent cladding clips per board (placed no more than 100mm apart and usually placed centrally) an additional screw is required through front of cladding clip, and pre-drilled tongue of cladding board - to support the cladding board vertically.

Slatted Cladding End Trim Typical Fixing Detail

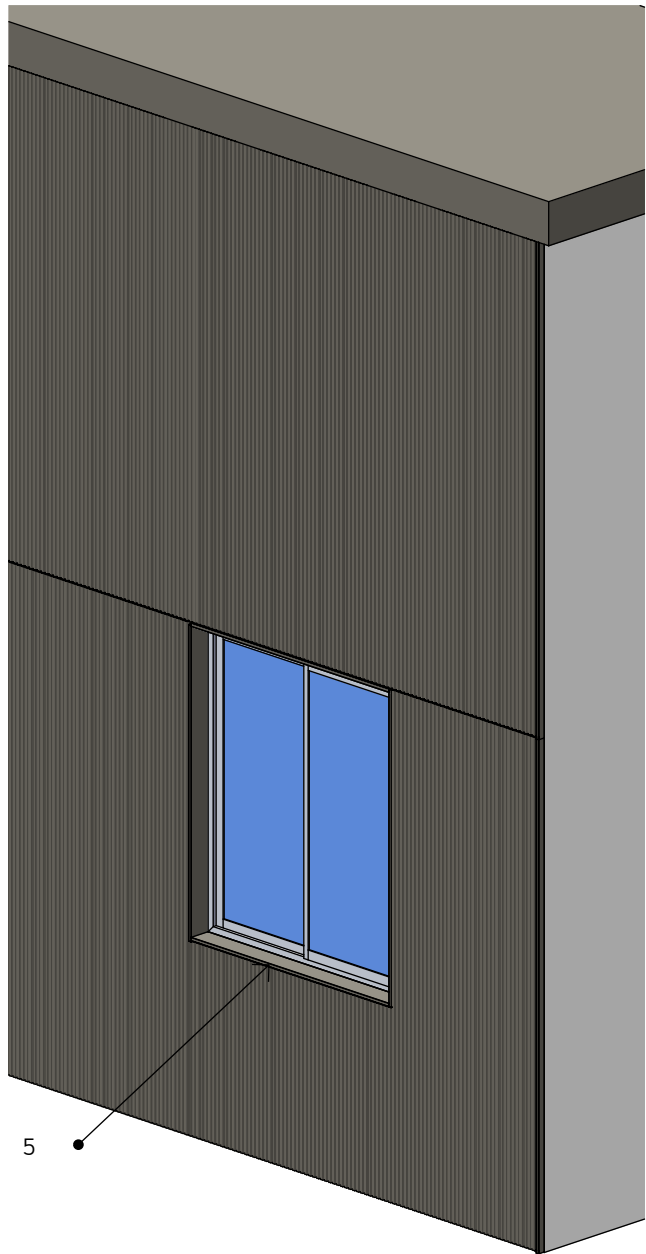


Iso: Cladding Corner Detail - showing
interface of vertical slatted cladding with a render or brick
wall finish
1:50

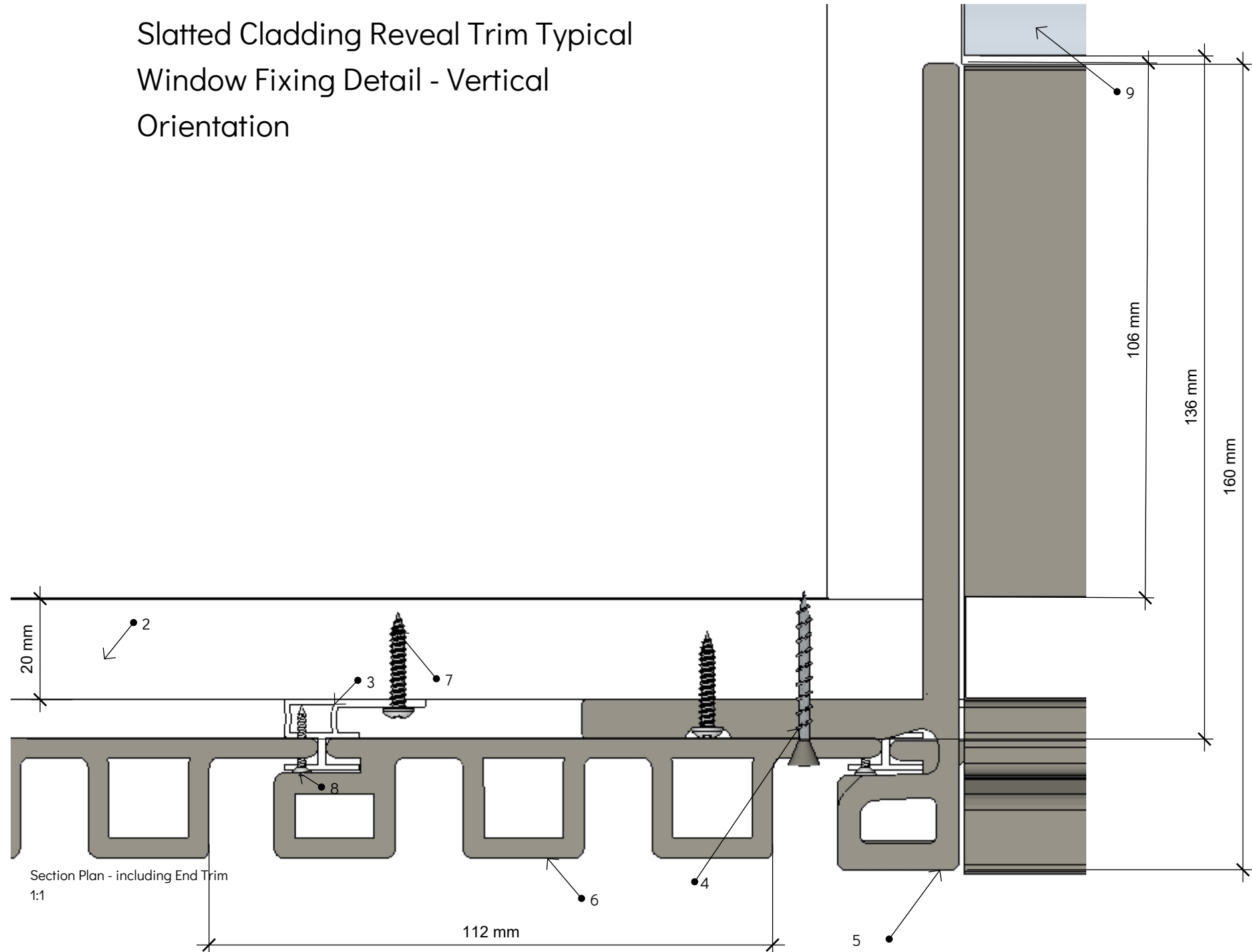


- 1: Building Wall Structure
- 2: Joists - shown is ECOPL20100 plastic joist (2800 x 100 x 20mm)
- 3: Cladding Clips - 1 per joist - fixed to joist using 'Wood Screws for Cladding'
- 4: Colour-coded screw - to recess of the adjacent first cladding board. (Ensure all holes are pre-drilled and countersunk)
- 5: Ecoscape Slatted Cladding End Trim
- 6: Ecoscape Slatted Panel Cladding Board
- 7: 'Wood screw for Cladding' - To fix trim - applied into recess - at no more than 1000mm centres vertically. (Ensure all holes are pre-drilled and countersunk)
- 8: Locking screw - For 2no. cladding clips per board (placed no more than 100mm apart and usually placed centrally) an additional screw is required through front of cladding clip, and pre-drilled tongue of cladding board - to support the cladding board vertically.

Slatted Cladding Reveal Trim Typical
Window Fixing Detail - Vertical
Orientation

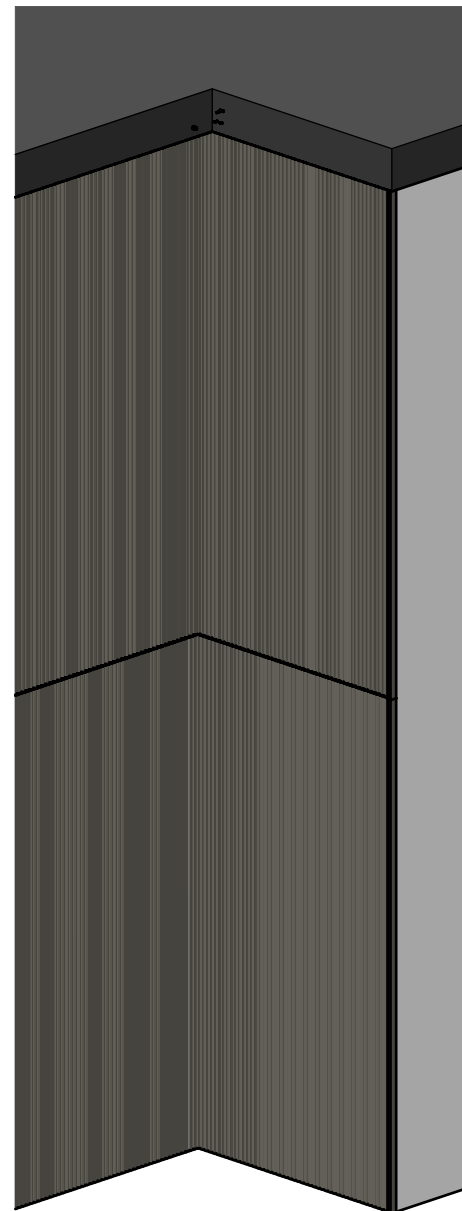


Iso: Cladding Corner Detail - showing
interface of vertical slatted cladding with a window reveal
1:50



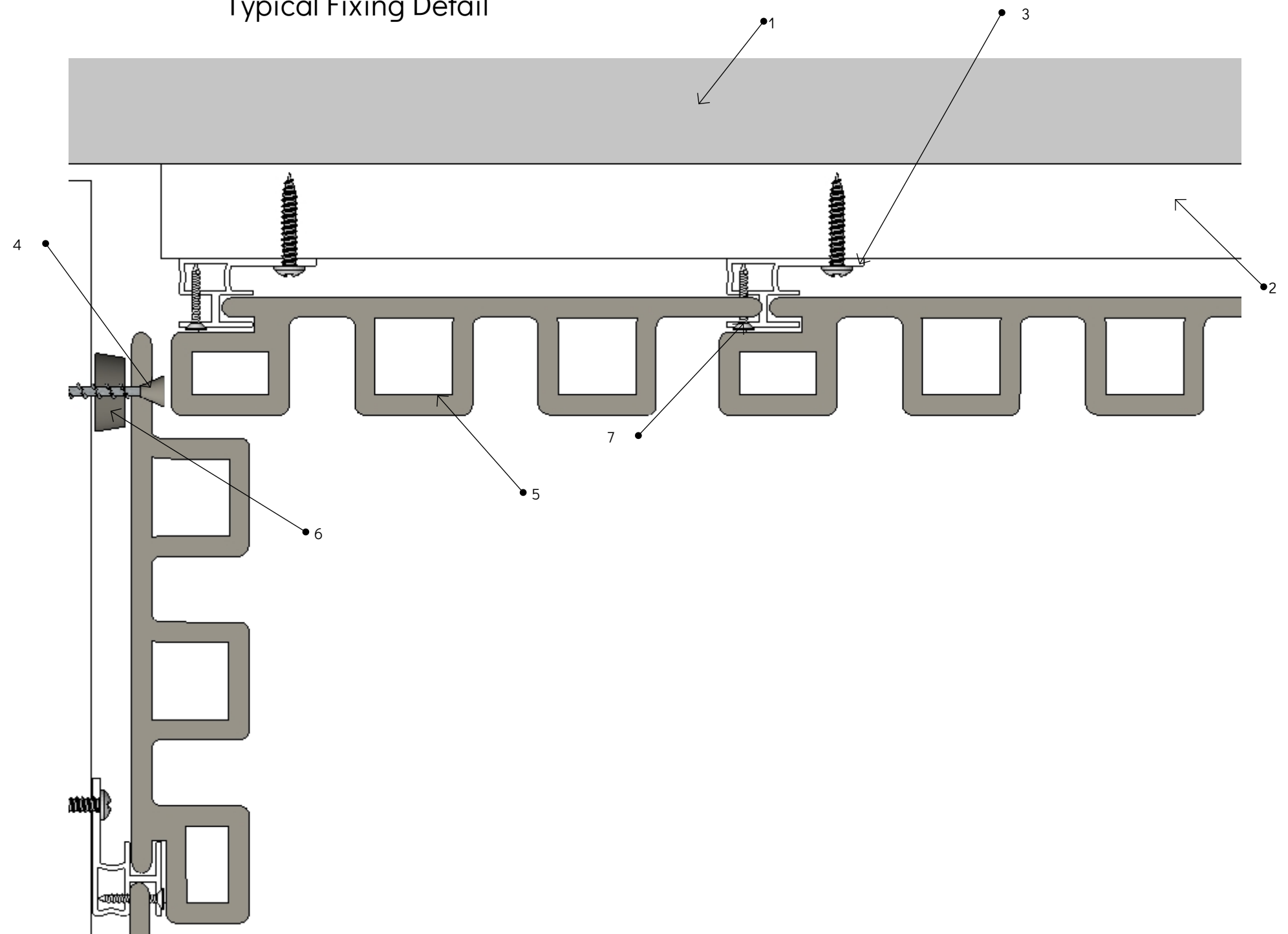
- 1: Building Wall Structure
2: Joists - shown is ECOPL20100 plastic joist (2800 x 100 x 20mm)
3: Cladding Clips - 1 per joist - fixed to joist using 'Wood Screws for Cladding'
4: Colour-coded screw - to recess of the adjacent first cladding board. (Ensure all holes are pre-drilled and countersunk)
5: Ecoscape Slatted Cladding Reveal Trim (Please Note: This can be ripped down to suit your window reveal)
6: Ecoscape Slatted Panel Cladding Board
7: 'Wood screw for Cladding' - To fix trim - applied into recess - at no more than 1000mm centres vertically. (Ensure all holes are pre-drilled and countersunk)
8: Locking screw - For 2no. cladding clips per board (placed no more than 100mm apart and usually placed centrally) an additional screw is required through front of cladding clip, and pre-drilled tongue of cladding board - to support the cladding board vertically.
9: Window Frame

Slatted Cladding Internal Corner Typical Fixing Detail



Iso: Cladding Corner Detail - showing internal corner and interface of vertical slatted cladding with a render or brick wall finish

1:50



- 1: Building Wall Structure
- 2: Joists - shown is ECOPL20100 plastic joist (2800 x 100 x 20mm)
- 3: Cladding Clips - 1 per joist - fixed to joist using 'Wood Screw for Cladding Clip'
- 4: Colour-coded screw - to recess of the adjacent first cladding board. (Ensure all holes are pre-drilled and countersunk)
- 5: Ecoscape Slatted Panel Cladding Board
- 6: Plastic Pad
- 7: Locking screw for cladding clip