

Installation Instructions

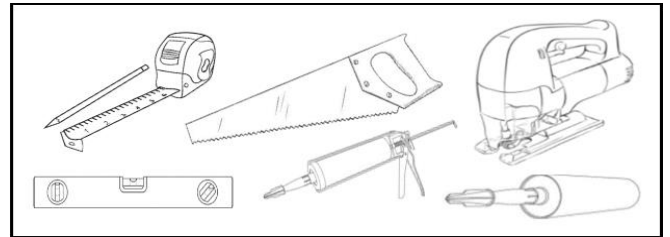
Easy to install creating a design feature in any area. Designed for use in bathrooms, showers and wet-rooms and areas of humidity and 'traffic' our panels can be adhered directly onto any surface including ceramic tiles, plaster, wallpaper, vinyl and timber. The ease of installation saves time, money and labour on renovations and gives a timeless design to any area.

Before you start installation ...

1. Decide on the preferred orientation of the panels. The panels can be installed horizontally, vertically or diagonally dependant on the finished design preference required.
2. Prepare the installation area by ensuring that the base surface is free of all nails, screws and any other pre-existing fixing, any holes are filled and sanded to a smooth finish and the surface is clean and clear of any dirt and debris. If the panels are being installed in a 'wet' area such as a shower or wet room or areas of high humidity, it is recommended although not essential that the installation surface is protected from moisture using a tanking kit or another form of water proofing membrane designed for wet areas.
3. Panels should be climatized before installation for at least 24 hours in the room or area in which installation is to be made. This should be done with the packaging removed.

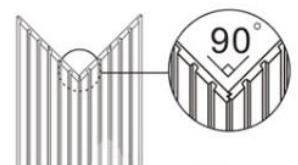
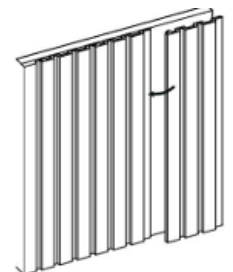
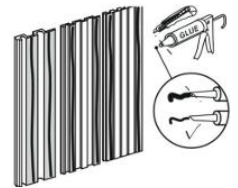
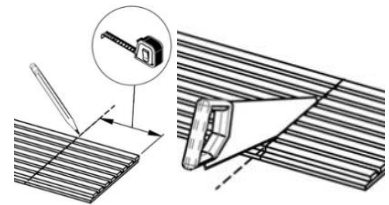
Tools required:

- Tape Measure
- Pencil
- Spirit Level
- Fine-toothed saw
- Electric jig-saw (for cut-outs)
- Spirit Level
- Skeleton Gun
- Strong waterproof solvent-free grab adhesive
- Clear Silicone Sealant



Installation Instructions:

1. Measure the height of the installation wall. If panels need to be cut, mark the panels using a pencil and square edge (remember measure twice, cut once!) Cut the panels face up to the required size using a sharp small-toothed handsaw.
**Top tip – placing tape along the line of the cut reduces mess and risk of marking. Edges can be smoothed with a fine sandpaper if required.*
2. Using a solvent free waterproof grab adhesive and skeleton gun, apply adhesive to the back of the panel to each of the raised ridges.
3. Place the panel against the install surface ensuring it is level and in the correct position and the tongue is to the right. Apply pressure to the front of the panel to give a good fix to the wall. Remove any excess sealant with a soft, damp cloth before fixing subsequent panels.
4. For the next and subsequent panels, apply adhesive to the ridged areas and also to the 'lip' of the panel which will interlock with the panel already in place to help create a waterproof seal between panels.
5. Apply a clear silicone sealant to the joints wiping away any excess to ensure the area is waterproof.
6. Co-ordinating mouldings are available to finish off the top edge and external corners of the install if required. This is fixed using the same adhesive and clear silicone sealant.



*For finishing exposed edges where co-ordinating mouldings are not desired, we recommend the use of an L-shape PVC, plastic or aluminium bonded using a waterproof adhesive to ensure waterproofing.