

2023

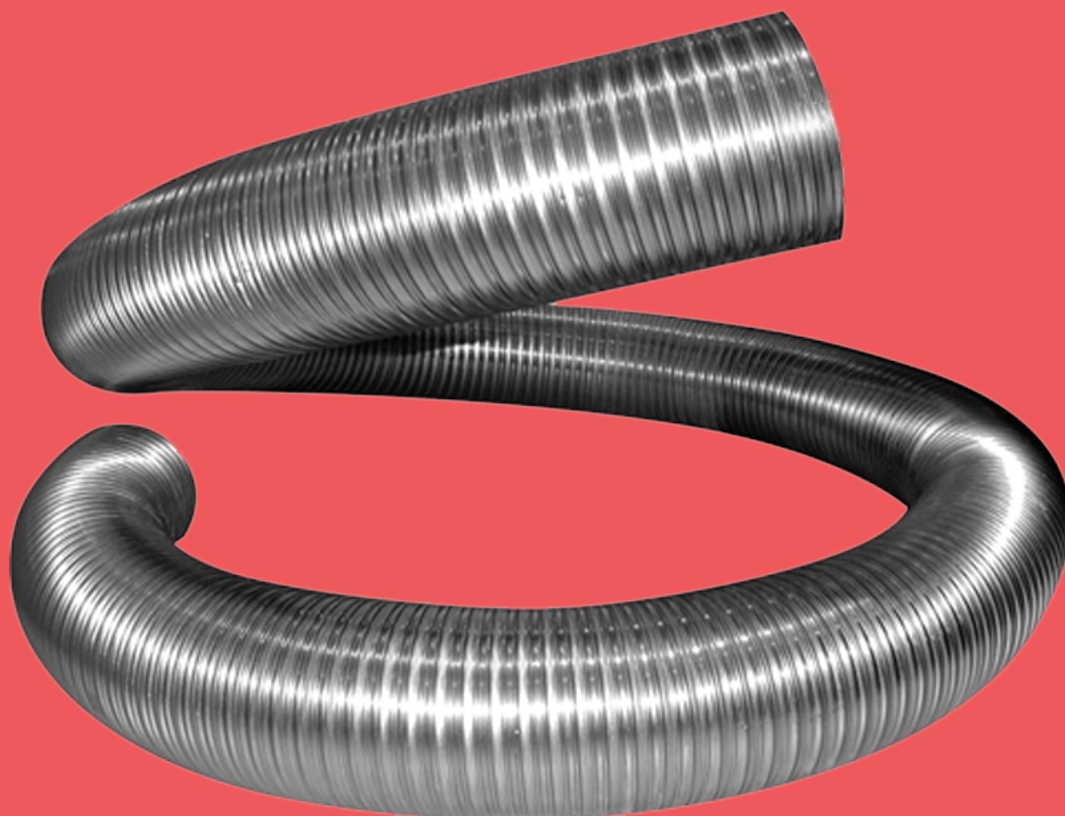


PRICE LIST

FLEXIBLE FLUE LINERS



SYSTEM	DESCRIPTION	ISSUE	DATE	PAGE
	Flexible Flue Liners - Introduction			3A
MF35	316L Mi-FLEX - Multifuel Flexible Liner	16	JUN 22	4A
MF36	904L Mi-FLEX - Multifuel Flexible Liner	16	JUN 22	4A
MF20	Mi-FLEX Accessories (Solid Fuel)	1	JUN 22	5A
MF25	Mi-FLEX Standard Fittings	3	JUN 22	8A
MF25	Mi-FLEX ScrewFIX Fittings	3	JUN 22	8A
MF90	Mi-FLEX Insulation	8	JUN 22	10A
MF94	Mi-FLEX Register Plates	8	JUN 22	11A
MF4	GAS FLEX - Triplelock 316L Gas / Oil Flexible Flue Liner	25	JUN 22	12A
MF34	GAS FLEX - Fittings	11	JUN 22	12A
MF8	GAS FLEX - Gas / Fire Boxes	1	JUN 22	13A



INTRODUCTION

Flue Liners can only be installed completely enclosed inside a masonry chimney. A non-masonry enclosure such as a timber frame with plasterboard is not acceptable.

The type of flue liner used depends on the appliance and the fuel used to burn in the appliance.

Triplelock gas and oil flue liner is suitable for gas and kerosene (28 second) oil appliances. It is manufactured from a single skin of 316L grade stainless steel.

Mi-Flex comes in two grades of stainless steel:

- 316L grade stainless steel

Suitable for wood burning, solid fuel can be used up to 20% of overall use (Applicable for the lifetime of the appliance).

- 904L grade stainless steel

Suitable for smokeless fuels and has a lifetime warranty (Applicable for the lifetime of the appliance).



Maintenance

Provision should be made for inspecting and cleaning the liner especially for multi-fuel liners on solid fuel applications. The liner should be swept at least once a year by a qualified chimney sweep.

Chemical chimney cleaners which contain chlorine, fluorine or metal scarifying devices cannot be used under any circumstances and will invalidate your warranty.

Mechanical cleaning with a stiff nylon brush and rods is the only method recommended.



Insulation

Insulation or back-filling should be done on tall, large or exposed chimneys as a matter of course. On the installations, whilst not essential, an insulated flue should ensure maximum performance and minimise condensation in the flue lining.

To insulate the chimney either use a loose fill granular insulating material such as Vermiculite or Leca, or use Rockwool insulating tubes that can be secured around the flue liner during installation.



Life Expectancy

Under normal operating conditions and providing that the flue liner has been installed and sized correctly, a flexible flue liner should last the lifetime of the appliance.



Fuels

Only fuels which are HETAS approved or recommended by the appliance manufacturer can be used.

Household refuse or rubbish must not be burned.

Wood must be well seasoned for at least a year and must not contain more than 20% moisture to avoid creosote deposits building up which can cause chimney fires.

If the appliance is slumbered overnight or for long periods, then it is essential to run the appliance at a high fire for a minimum of 30 minutes per day. Failure to meet this requirement may result in premature liner failure and in these circumstances the warranty is invalid.



Packaging

Our flue liners are packaged in different ways to suit your business.

Mi-Flex Multifuel Flexible Liner



FUEL TYPE:	Gas, oil & approved solid fuels
DIAMETER RANGE:	80mm to 300mm
316L MATERIAL:	0.11mm 316L Grade Stainless Steel
904L MATERIAL:	0.11mm 904L Grade Stainless Steel
JOINT METHOD:	Omega-Lock
DESIGNATIONS:	BS EN 1856-2 T600 N1 W Vm L50011 G BS EN 1856-2 T600 N1 W Vm L70011 G BS EN 1856-2 T200 P2 W Vm L50011 O BS EN 1856-2 T200 P2 W Vm L70011 O
HETAS APPROVED:	Yes
CE APPROVED:	Yes
WARRANTY:	LIFETIME warranty
CPR:	2797-CPR-603464



316L FLUE LINER

INTERNAL MM	316L WOOD, SOLID FUEL		COIL SIZE
CUT LENGTHS 1M - 20M			
Ø 80	35Z-80-1	£23.95	44M
Ø 100	35Z-100-1	£27.63	44M
Ø 125	35Z-125-1	£29.03	44M
Ø 150	35Z-150-1	£33.40	44M
Ø 180	35Z-180-1	£46.59	32M
Ø 200	35Z-200-1	£51.68	30M
CUT LENGTHS 1M - 6M			
Ø 250	35Z-250-1	£110.52	6M
Ø 300	35Z-300-1	£154.00	6M

904L FLUE LINER

INTERNAL MM	904L WOOD, SOLID FUEL		COIL SIZE
CUT LENGTHS 1M - 20M			
Ø 80	36Z-80-1	£56.48	44M
Ø 100	36Z-100-1	£74.70	44M
Ø 125	36Z-125-1	£76.94	44M
Ø 150	36Z-150-1	£88.48	44M
Ø 180	36Z-180-1	£141.76	32M
Ø 200	36Z-200-1	£157.90	30M
CUT LENGTHS 1M - 6M			
Ø 250	36Z-250-1	£377.41	6M
Ø 300	36Z-300-1	£607.94	6M

FLEX DISPENSER

FLEX DISPENSER (FLEX SOLD SEPARATELY)

39-FLX-DSPNSR	£367.98
---------------	---------



Flex Dispenser



40 metre 904L Coil




Mi-Flex Accessories (solid fuel)



To be used in conjunction with Mi-FLEX Flue Liner

TERMINALS & TOP FIXINGS

					
Ø INT. MM	TOP PLATE	TOP CLAMP	PROTECTION SLEEVE	POT HANGER	POT HANGING BRACKET
Ø 80	20-80-P £19.69	20-80-C £15.60			
Ø 100	20-100-P £19.69	20-100-C £19.29			
Ø 125	20-125-P £19.69	20-125-C £17.16	20-125-PS £18.68	20-125-PHS £40.27	20-125-PHB £18.51
Ø 150	20-150-P £19.69	20-150-C £18.28	20-150-PS £22.26	20-150-PHS £45.96	20-150-PHB £19.15
Ø 175	20-180-P £19.69	20-180-C £18.91	20-180-PS £27.78	20-180-PHS £62.26	
Ø 200	20-200-P £19.69	20-200-C £19.75	20-200-PS £31.47	20-200-PHS £71.26	
Ø 250	20-250-P £20.90	20-250-C £21.40			
Ø 300	20-300-P £26.34	20-300-C £27.01			

					
Ø INT. MM	MI-FLEX POT HANGER COWL NATURAL	MI-FLEX POT HANGER COWL TERRACOTTA	MI-FLEX POT HANGER COWL BLACK	MI-FLEX SUPPORT CLAMP HANGING COWL - NATURAL	MI-FLEX SUPPORT CLAMP HANGING COWL - TERRACOTTA
Ø 125	20-125-PHCM £117.02	20-125-PHCMT £122.87	20-125-PHCMB £115.70	20-125-PHCM-S £127.17	20-125-PHCMT-S £133.34
Ø 150	20-150-PHCM £117.02	20-150-PHCMT £122.87	20-150-PHCMB £179.10	20-150-PHCM-S £127.17	20-150-PHCMT-S £133.34
Ø 175	20-180-PHCM £150.41	20-180-PHCMT £173.82			
Ø 200	20-200-PHCM £203.04	20-200-PHCMT £208.57			

MI-FLEX INSTALL METHODS

OPTION 1 - Standard fit with inner jubilee band (all included with pro pot hangers)

Pass the smaller jubilee band through the hoops on the inner legs of the cowl, slide the spigot into the inside of the flexible liner and push down the cowl fully. Tighten the inner band so the flex is held in place securely.

Push the liner down the chimney and fix to the outside of the pot using the second jubilee band.

OPTION 2 - Pot hanger support clamp method

When used in conjunction with the pot hanging cowl the three inner support straps and locking band are not required, these can be cut off or left.

The additional support clamp is used in their place, this method allows for the cowl to be fitted last, and also allows for easy backfilling of the chimney.

Take any slack out of the liner and place the bracket over the liner making sure that the buckle strap is on the underside allowing the legs of the bracket to rest on top of the chimney pot, tighten the clamp until the clamp grips the flex securely.

The liner is then cut 3-5mm above the clamp, the neck of the cowl is then slid down the inside of the flue liner until it sits on top of the pot, then secure to the outside of the pot using the support straps and jubilee band.

**DOWNLOAD
OUR POT HANGING
COWLS GUIDE
SCAN THIS QR CODE**



TERMINALS & TOP FIXINGS

Ø INT. MM	RAIN CAP		SQUARE POT HANGER C/W MESH		POT HANGER C/W AD COWL		POT HANGING COWL C/W MESH TERRACOTTA		PROTECTION SLEEVE C/W RAIN CAP		POT HANGER C/W AD COWL TERRACOTTA	
Ø 100	20-100-RC	£36.75										
Ø 125	20-125-RC	£45.41	20-125-SPHCM	£123.75	20-125-PHAD	£176.54	20-125-SPHCMT	£132.18	20-125-PSRC	£54.88	20-125-PHADT	£176.54
Ø 150	20-150-RC	£52.69	20-150-SPHCM	£123.75	20-150-PHAD	£176.54	20-150-SPHCMT	£132.18	20-150-PSRC	£56.82	20-150-PHADT	£176.54
Ø 175	20-180-RC	£69.25	20-180-SPHCM	£189.95	20-180-PHAD	£218.97	20-180-SPHCMT	£238.76	20-180-PSRC	£73.72	20-180-PHADT	£229.91
Ø 200	20-200-RC	£96.92	20-200-SPHCM	£198.88	20-200-PHAD	£223.91	20-200-SPHCMT	£244.37	20-200-PSRC	£102.53	20-200-PHADT	£235.47
Ø 250	20-250-RC	£103.23										
Ø 300	20-300-RC	£148.58										

STANDARD BOTTOM FIXINGS

Ø INT. MM	ADAPTOR TO FLEX		INCREASER TO FLEX		LONG ADAPTOR TO FLEX		LONG INCREASER TO FLEX	
Ø 80			20-80-MR	£35.84				
Ø 100			20-100-MR	£36.72				
Ø 125	20-125-MAE	£33.80	20-125-MR	£39.50	20-125-MAELT	£43.83	20-125-MRLT	£67.91
Ø 150	20-150-MAE	£33.80	20-150-MR	£51.41	20-150-MAELT	£49.44	20-150-MRLT	£82.36
Ø 175	20-180-MAE	£55.35	20-180-MR	£61.01				
Ø 200	20-200-MAE	£58.47						
Ø 250	20-250-MAE	£59.35						
Ø 300	20-300-MAE	£63.55						

Ø INT. MM	ADAPTOR TO FLEX DOUBLE STEP		STOVE-MATE PLATE AND GASKET		REGISTER PLATE ADAPTOR TO FLEX		REGISTER PLATE INCREASER TO FLEX	
Ø 100					20-100-THA	£99.67	20-100-THAR	£114.83
Ø 125	20-125-MRD	£119.44	20-125-SM	£35.02	20-125-THA	£102.35	20-125-THAR	£153.42
Ø 150	20-150-MRD	£127.76	20-150-SM	£49.28	20-150-THA	£109.39	20-150-THAR	£145.50
Ø 175					20-180-THA	£118.74		
Ø 200					20-200-THA	£126.99		

ACCESSORIES

							
Ø INT. MM	FLEX JOINER		NOSE CONE		CHIMNEY NOTICE PLATE	CHIMNEY NOTICE PLATE (48 PACK)	JUBILEE STRAP
Ø 100	20-100-J £40.80		20-100-NC £10.26		20-CNP £3.35	20-CNP48 £157.72	Ø200-800MM LENGTH
Ø 125	20-125-J £38.51		20-125-NC £9.80				13-JUBILEE-200 £11.13
Ø 150	20-150-J £41.56		20-150-NC £10.08				
Ø 175	20-180-J £50.37		20-180-NC £13.05				Ø300-1000MM LENGTH
Ø 200	20-200-J £57.34		20-200-NC £13.99				13-JUBILEE-300 £11.79
Ø 250	20-250-J £173.03		20-250-NC £267.25				
Ø 300	20-300-J £173.03		20-300-NC £96.79				

GATHER HOODS

If a chimney is being relined above an open fire, it is necessary to have a gather fitted above the fireplace to which the flexible flue liner is attached. All London Gathers are 9" deep.

GATHER HOODS - STANDARD

			
Ø INT. MM	GATHER HOOD 200 X 300	GATHER HOOD 300 X 300	GATHER HOOD 300 X 400
Ø 125	20-125-GHS £205.36	20-125-GHM £220.96	
Ø 150	20-150-GHS £206.94	20-150-GHM £224.57	
Ø 175	20-180-GHS £210.96	20-180-GHM £228.00	20-180-GHL £244.70
Ø 200	20-200-GHS £213.46	20-200-GHM £239.59	20-200-GHL £248.95



LONDON GATHER HOODS

					
Ø INT. MM	GATHER HOOD 9 INCH 200 X 300 X H200	GATHER HOOD 9 INCH 225 X 225 X H200	GATHER HOOD 12 INCH 225 X 300 X H200	GATHER HOOD 19 INCH 225 X 485 X H250	GATHER HOOD 26 INCH 225 X 660 X H250
Ø 125	61-125-LG6 £122.73	61-125-LG9 £137.31	61-125-LG12 £137.31	61-125-LG19 £170.85	
Ø 150	61-150-LG6 £122.73	61-150-LG9 £137.31	61-150-LG12 £137.31	61-150-LG19 £170.85	61-150-LG26 £172.62
Ø 175	61-180-LG6 £130.74	61-180-LG9 £147.07	61-180-LG12 £147.07	61-180-LG19 £177.09	61-180-LG26 £181.10
Ø 200	61-200-LG6 £136.07	61-200-LG9 £152.32	61-200-LG12 £152.32	61-200-LG19 £178.61	61-200-LG26 £186.09

Mi-Flex ScrewFIX Fittings

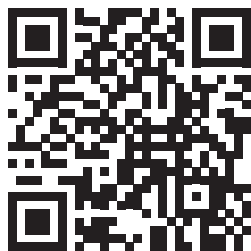


To be used in conjunction with Mi-FLEX Flue Liner

THE SCREW-FIX Adaptor

It's simple, no screws, no cement, just screw the adaptor onto the liner until tight.

JOB DONE!



Scan the code to take a look at just how easy it is to fit with our video installation guide!



TERMINALS



AI-FLEX POT HANGING COWL C/W MESH



AI-FLEX POT HANGING COWL C/W MESH TERRACOTTA



RAIN CAP

Ø INT.
MM

Ø 80

Ø 100

Ø 125

Ø 150

Ø 175

Ø 200

25-125-PHCM2

£100.00

25-150-PHCM2

£100.00

25-125-PHCMT2

£111.92

25-150-PHCMT2

£111.92

25-80-RC

£35.23

25-100-RC

£38.88

25-125-RC

£41.99

25-150-RC

£48.25

25-175-RC

£62.54

25-200-RC

£77.30



POT HANGING COWL C/W MESH



POT HANGING COWL C/W MESH TERRACOTTA



POT HANGER

Ø INT.
MM

Ø 80

Ø 100

Ø 125

Ø 150

Ø 175

Ø 200

25-80-PHCM

£59.71

25-100-PHCM

£70.15

25-80-PHCMT

£76.25

25-100-PHCMT

£86.72

25-125-PHCMT

£314.20

25-150-PHCMT

£113.48

25-175-PHCMT

£156.20

25-200-PHCMT

£194.90

25-80-PHS

£35.43

25-100-PHS

£38.97

25-125-PHS

£40.66

25-150-PHS

£46.01

25-175-PHS

£61.28

25-200-PHS

£72.63

BOTTOM FIXINGS



LONG TAIL ADAPTOR TO FLEX

Ø INT.
MM

Ø 80	25-80-MAELT	£35.85
Ø 100	25-100-MAELT	£40.25
Ø 125	25-125-MAELT	£45.73
Ø 150	25-150-MAELT	£51.29
Ø 175	25-175-MAELT	£59.86
Ø 200	25-200-MAELT	£68.37



LONG TAIL INCREASER TO FLEX

25-80-MRLT	£49.24
25-100-MRLT	£62.95
25-125-MRLT	£69.34
25-150-MRLT	£83.52
25-175-MRLT	£98.13



REGISTER PLATE INCREASER TO FLEX

25-80-THAR	£72.77
25-100-THAR	£80.04
25-150-THAR	£100.70



ADAPTOR TO FLEX

Ø INT.
MM

Ø 80	25-80-MAE	£20.25
Ø 100	25-100-MAE	£22.62
Ø 125	25-125-MAE	£25.54
Ø 150	25-150-MAE	£28.53
Ø 175	25-175-MAE	£31.45
Ø 200	25-200-MAE	£34.44



INCREASER TO FLEX

25-80-MR	£37.82
25-100-MR	£38.84
25-125-MR	£41.55
25-150-MR	£53.20
25-175-MR	£62.61



ADAPTOR TO FLEX (1MM)

25-125-MAE1	£52.34
25-150-MAE1	£56.91
25-175-MAE1	£76.25
25-200-MAE1	£86.72

ACCESSORIES



FLEX JOINER

Ø INT.
MM

Ø 80	25-80-J	£48.86
Ø 100	25-100-J	£54.57
Ø 125	25-125-J	£66.48
Ø 150	25-150-J	£74.19
Ø 175	25-175-J	£75.84
Ø 200	25-200-J	£82.94



NOSE CONE

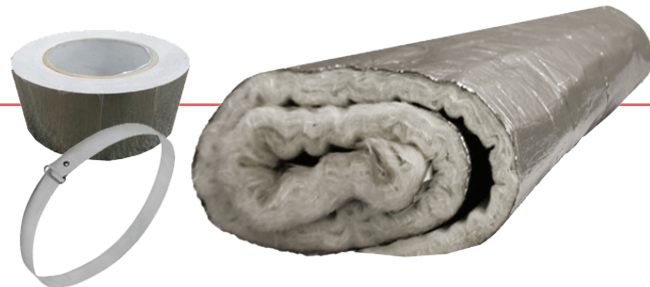
25-80-NC	£23.56
25-100-NC	£24.96
25-125-NC	£26.61
25-150-NC	£28.70
25-175-NC	£30.96
25-200-NC	£33.15



INSULATION BACK FILLER

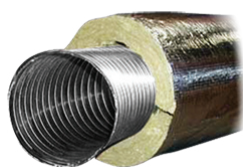
25-125-VBF	£69.89
25-150-VBF	£69.89

Mi-Flex Insulation



To be used in conjunction with
Mi-FLEX Flue Liner

FLEX INSULATION



Ø INT. MM	ROCKWOOL TUBE 1000MM LONG		T303 ALUMINIUM FOIL TAPE 50MM WIDE		MI-FLEXWRAP KIT 10M BLANKET, 20 BANDS, 12M TAPE	
Ø 125	90-RPS-125	£62.79	90-RPS-T	£33.48	90-FW600-10K	£542.02
Ø 150	90-RPS-150	£75.00			90-FW600-10K	£542.02
Ø 175	90-RPS-200	£98.07			90-FW850-10K	£774.40
Ø 200	90-RPS-200	£98.07			90-FW850-10K	£774.40

LOOSE FILL INSULATION



Ø INT. MM	VERMICULITE (100L BAG)		LECA (50L BAG)		LOOSE INSULATION CHIMNEY BACK FILLER	
Ø 125	90-VERM	£69.48	90-LECA	£55.04	25-125-VBF	£69.89
Ø 150					25-150-VBF	£69.89

CHIMWRAP

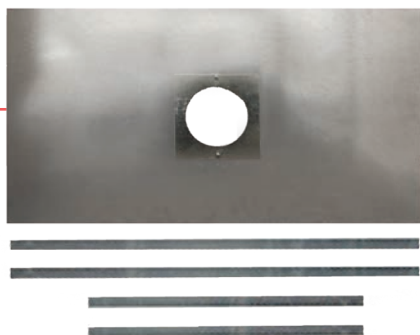


INSULATING SLEEVE FOR FLEXIBLE FLUE LINERS

The inner lining of Chimwrap is manufactured using long strand textile grade borosilicate glass fibre, which is mechanically consolidated to form a felt product.

- The product is stable in arduous environments and does not accelerate corrosion of metallic components and contains low resins and binder that can volatilize.
- The outer fabric is manufactured from e-glass cloth, which is low in resin and binder, this reduces smoke development and the prevention of volatilization. The straps are manufactured using a high weight e-glass cloth which is weave locked to prevent fraying and tearing.

Ø INT. MM	CHIMWRAP 1000MM LONG	
Ø 125	90-CW125150	£140.33
Ø 150	90-CW125150	£140.33
Ø 175	90-CW175200	£166.99
Ø 200	90-CW175200	£166.99



Register Plates



A register plate is a piece of light metal with a circular hole cut out of it to accommodate the diameter of the stove flue pipe.

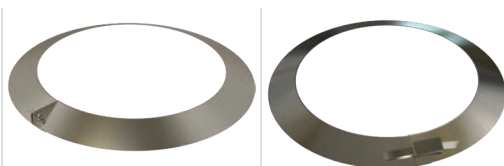
The plate is placed in the fireplace opening where the stove pipe meets the chimney flue section. It is a necessary item as the chimney flue must be sealed around the stove pipe.

REGISTER PLATES

PLATE SIZE	REGISTER PLATE (F) 900MM X 495MM	REGISTER PLATE (G) 900MM X 495MM	REGISTER PLATE (H) 900MM X 600MM	REGISTER PLATE (J) 900MM X 600MM	REGISTER PLATE (K) 900MM X 600MM
FLUE DIAMETER	125/150MM HOLE Ø	125/150MM HOLE Ø	NO HOLE	180/200MM HOLE Ø	180/200MM HOLE Ø
ACCESS HOLES	NO ACCESS HOLE	2 ACCESS HOLES	NO ACCESS HOLE	NO ACCESS HOLE	2 ACCESS HOLES
	94-REG-F £114.07	94-REG-G £129.28	94-REG-H £118.99	94-REG-J £101.28	94-REG-K £113.42

PLATE SIZE	REGISTER PLATE (A) 800MM X 400MM	REGISTER PLATE (B) 1000MM X 400MM	REGISTER PLATE (D) 1250MM X 600MM	STRIP (A) 2000MM X 100MM
FLUE DIAMETER	125/150MM HOLE Ø	125/150MM HOLE Ø	NO HOLE	
ACCESS HOLES	1 ACCESS HOLE	2 ACCESS HOLES	NO ACCESS HOLE	
	94-REG-A £106.48	94-REG-B £124.74	94-REG-D £145.76	94-STRIP-A £25.04

REGISTER PLATE COLLAR



Ø INT. MM	DEBRIS COLLAR NUT AND BOLT	DEBRIS COLLAR JUBILEE CONNECTOR
Ø 100		
Ø 125	94-COLLAR-125 £33.27	94-COLLAR-J-125 £33.27
Ø 150	94-COLLAR-150 £36.39	94-COLLAR-J-150 £36.39
Ø 175	94-COLLAR-175 £56.27	94-COLLAR-J-175 £56.27
Ø 200	94-COLLAR-200 £61.88	94-COLLAR-J-200 £61.88

Gas Flex - Triplelock 316L Gas/Oil Flexible Flue Liner



FUEL TYPE:	Gas and Oil
DIAMETER RANGE:	80mm to 300mm
MATERIAL:	0.10mm 316L Grade Stainless Steel
JOINT METHOD:	Triplelock
DESIGNATIONS:	EN1856-2 T250 NI D V3 L50010 G
KITEMARKED:	Yes
CE APPROVED:	Yes
WARRANTY:	10 year conditional warranty
CPR:	2797-CPR-603464



80m Wooden Spider



44m Coil wrapped in plastic

GAS FLEX - TRIPLELOCK 316L FLUE LINER

Ø INT. MM	GAS FLEX PER METRE		COIL LENGTH
CUT LENGTHS 4M TO 20M			
Ø 80	4Z-80-1	£20.46	50M / 80M
Ø 100	4Z-100-1	£21.08	50M / 80M
Ø 125	4Z-125-1	£21.08	44M / 80M
Ø 150	4Z-150-1	£30.67	40M
Ø 180	4Z-180-1	£38.70	32M
Ø 200	4Z-200-1	£43.16	30M
CUT LENGTHS 1M TO 6M			
Ø 250	4Z-250-1	£124.49	6M
Ø 300	4Z-300-1	£174.06	6M

INSTALLATION PACKS



Ø INT. MM	INSTALL PACK B		INSTALL PACK C	
Ø 100	34-100-PB	£21.87	34-100-PC	£33.63
Ø 125	34-125-PB	£22.77	34-125-PC	£33.79
Ø 150	34-150-PB	£26.78	34-150-PC	£36.08

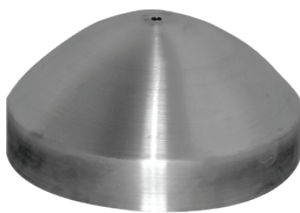


TERMINALS & TOP FIXINGS

Ø INT. MM	GC1 COWL		GCL COWL		CAST TERMINAL		GAS FLUE BUG		OIL COWL	
Ø 100	34-100-C	£13.93							34-100-O	£35.50
Ø 125	34-125-C	£13.93			34-125-CT	£105.05	34-125-FB	£50.82	34-125-O	£47.76
Ø 150	34-150-C	£17.76							34-150-O	£80.64
Ø 180			34-180-C	£136.31						
Ø 200			34-200-C	£139.35						
Ø 250			34-250-C	£214.19						
Ø 300			34-300-C	£239.06						

Ø INT. MM	CLAMP PLATE (2 PIECE)		TOP PLATE		TOP CLAMP		POT HANGING GAS COWL		POT HANGING GAS COWL - TERRACOTTA	
Ø 100	34-100-P	£7.82	20-100-P	£19.69	20-100-C	£16.29	34-100-PHCM	£65.66	34-100-PHCMT	£81.54
Ø 125	34-125-P	£7.82	20-125-P	£19.69	20-125-C	£17.16	34-125-PHCM	£67.75	34-125-PHCMT	£83.62
Ø 150	34-150-P	£7.82	20-150-P	£19.69	20-150-C	£18.28	34-150-PHCM	£69.85	34-150-PHCMT	£85.72
Ø 180	34-180-P	£48.26	20-180-P	£19.69	20-180-C	£18.91				
Ø 200	34-200-P	£39.16	20-200-P	£19.69	20-200-C	£19.75				
Ø 250			20-250-P	£20.90	20-250-C	£21.40				
Ø 300			20-300-P	£26.34	20-300-C	£27.01				

BOTTOM FIXINGS



ACCESSORIES

Ø INT.
MM

ADAPTOR TO SW

NOSE CONE ALUMINIUM

DEBRIS PLATE SPRING FIX

NOSE CONE PLASTIC

Ø 100

34-100-A

£31.66

20-100-NC

£10.26

34-125-DP

£48.26

34-125-N

£3.71

Ø 125

34-125-A

£35.98

20-125-NC

£9.80

Ø 150

34-150-A

£31.66

20-150-NC

£10.08

Ø 175

34-180-A

£46.18

20-180-NC

£13.05

Ø 200

34-200-A

£47.91

20-200-NC

£13.99

Ø 250

34-250-A

£51.77

20-250-NC

£267.25

Ø 300

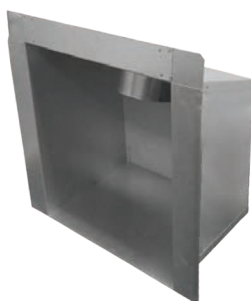
34-300-A

£101.19

20-300-NC

£96.79

GAS / FIRE BOXES

Ø INT.
MM

FLUE GAS COLLECTOR

VISA FLUE GAS COLLECTOR

STANDARD FIRE BOX

RECESSED FIRE BOX

Ø 125

8-FGC-SF

£179.74

8-VISA-SF

£163.33

8-SFB

£263.37

8-RFB

£289.12

Ø INT.
MM

ILFE FIRE BOX

VMF (SINGLE) FIRE BOX

SHEFFIELD PATTERN BOX

Ø 125

8-ILFE

£444.08

8-VMFS

£172.21

8-SHEF

£231.21

TRADING TERMS AND CONDITIONS

CONDITIONS OF TRADING

1. Definitions:

'The Company' shall mean Mi-Flues Ltd, Taymin Ltd, Ai-Flues Ltd and The Flue House Ltd and any trading name under those companies. 'The Buyer' means any persons or body corporate who accept a quotation of the Seller. 'Goods' shall mean all the Products, Articles, Material and Components supplied or otherwise dealt in the Company.

2. Acceptance:

(a) All orders are subject to these Terms and Conditions unless otherwise agreed by a director of the Company in writing. No terms or conditions forwarded by the Buyer, nor verbal representations, warranties guarantees or other statements made by or on behalf of the Company, shall be binding on the Company unless confirmed by a director of the Company in writing.

(b) Notwithstanding acceptance of the Buyer's order the Company can give no warranty or undertaking that the Goods are available and reserves the right to cancel the order if it should be unable to effect the order within a reasonable period of time for any reason beyond its control and in such a case the Company shall not be liable to compensate the Buyer.

3. Quotations & Published Prices:

(a) Any quotation or published price is subject to alteration or withdrawal without prior notice as a result of fluctuations in exchange rates or labour, materials, transport or other costs, beyond the control of the Company, so that the Company has the right to adjust its prices to those prevailing at the time of dispatch.

4. Cancellation / Variations and Returns:

(i) Cancellation of an order cannot be accepted or goods returned for credit unless previously agreed to in writing by the Seller and in the case of goods returned for credit, proof of the original purchase is provided in the form of a delivery note or invoice.

(ii) No variation of any order shall be binding upon the Seller unless the same shall be agreed in writing.

(iii) In the event that the Seller agrees in writing to accept the return of stock items, a charge of 20% of invoice price will be made, such sum representing a reasonable pre-estimate of the Seller's average costs of collection and administration. Stock items means items normally held in stock by the Seller.

(iv) Items specially ordered or manufactured or not normally held by the Seller as stock and will not be accepted for return and credit.

(v) Any goods accepted by the Seller for credit must be returned in re-saleable condition.

(vi) Where the Buyer deals as a consumer he shall be entitled to cancel the contract within seven working days following the placing of the order by sending written notification to the seller at Taymin Business Park, Mitcham Road, Blackpool, Lancashire, FY4 4QN or by sending a fax to 01253 600061 or an email to sales@mi-flues.com

5. Delivery:

(a) Except when order value is less than agreed delivery charge, the Goods will be delivered free of charge to the delivery address given with the Buyer's order and unless there shall be any specific instructions as to whom the consignment should be delivered and whose signature shall be given by way of acknowledgement of receipt of the Goods then the Company shall be obliged only to accept the signature of an apparently authorised person.

(b) The Company cannot permit Goods to be left at any delivery address otherwise than in exchange for a signed receipt nor can such receipt be qualified in any way whatsoever other than to identify a missing item or by describing the damage to any item alleged to be found damaged on delivery.

(c) The Company shall only be obliged to deliver the Goods to the destination given with the order unless such destination is changed by notification in writing and if on delivery an apparently authorised person shall on behalf of the Buyer provide to the Company's driver a written request to deliver the Goods to an alternative address then the driver may at his discretion honour such a request and this shall be entirely at the Buyer's risk and the Company shall not be responsible for any losses thereby occasioned.

(d) The Company reserves the right to levy an additional charge in respect of delivery where it agrees to a change in the address for delivery of the Goods in the event that the value of the order for such Goods is below a minimum order value as determined by the Company from time to time and notified to the Buyer verbally or in writing.

(e) Times and dates quoted for dispatch or completion represent the Company's best estimates only and are given in good faith, time not being of the essence. In the event of the Buyer failing to take delivery at the appointed time and/or place, the Company shall be entitled to charge for all expenses which may be incurred by reason of such failure. The Company shall have no liability to the Buyer for any late delivery or short delivery.

6. Damage or Loss in Transit:

(a) Unless delivery is made by the Company's own transport or personnel, damage or loss in transit will be the responsibility of the carrier, Carrier receipts should

be signed unexamined, if so applicable and any Goods broken or damaged in transit should be notified to the carrier and the company within three days of receipt. Goods should be returned to the Company in the original packing within seven days of clearance by the carrier's inspectors otherwise no claim will be entertained.

(b) Any alleged shortages or defects must also be notified to the Company in writing within three days of receipt of Goods. Should Goods not be delivered within seven working days of date of receipt of invoice for the Goods, immediate notice in writing must be given to the carrier and the Company. In certain circumstances, the Company may agree to the return of Goods for credit but any agreement to accept such returns will always be subject to such Goods being deemed by the Company upon inspection at the Company's premises, to be in a re-saleable condition. In the event of this not being the case, such Goods will be returned to the original delivery address and no credit will be issued.

7. Transfer of Risk and Passage of Title:

(a) Subject to 5(a) but notwithstanding any other provisions hereof, risk in the Goods shall pass to the Buyer at the moment the Goods leave the Company's premises.

(b) Notwithstanding the provisions of sub clause (a) hereof, all property legal and equitable in the Goods or in the case of contracts for the sale or supply of Goods to a Buyer in Scotland, all property title and ownership in the Goods, shall remain in the Company and shall not pass to the Buyer unless and until the moment of payment of the due price of the Goods together with any interest which may have accrued there on pursuant to Clause 8. To assist the Company in asserting its property rights hereby retained, the Buyer shall (at the Buyer's expense) so store keep and record the Goods as to facilitate their recognition and identification and shall permit the Company to enter the Buyer's premises and re-take such retained Goods.

(c) If the Buyer (i) fails to make any payment to the Company when due, or (ii) proposes to compound with its creditors, applies for an interim order under the Insolvency 1986 or has a bankruptcy petition presented against it or (iii) being a company, enters into voluntary or compulsory liquidation, has a receiver, an administrator or administrative receiver appointed over all or any of its assets or takes or suffers similar action, or if the Company has reasonable cause to believe that any of these events is likely to occur then the Company shall have the right, without prejudice to any other remedies:

- To enter without prior notice, any premises of the Buyer where Goods owned by the Company may be and to repossess and dispose of any Goods owned by it so as to discharge any sums owed to it by the Buyer under this or any other contract;
- To require the Buyer not to resell or part with possession of any Goods owned by the Company until the Buyer has paid in full all sums due to the Company under this or any other contract;
- To withhold delivery of any undelivered Goods and stop any Goods in transit.

(d) The purpose of each contract of sale to which these Terms and Conditions apply is to provide the Buyer with stock for the Buyer's own business as seller of such stock and not to alter them so that they become or are absorbed into some new thing. The Buyer shall deal with the Goods only and strictly in a manner consistent with this purpose.

8. Warranties & Guarantees:

(a) The Company warrants that the Goods are a reasonable quality and will be delivered in a reasonable condition. Any complaint relating to the quality or condition or description of the Goods should be notified to the Company within 3 days of receipt of the Goods and if the Company so demands the Goods will be returned to the Company for examination whereupon if the complaint is found to be justified then the Goods will be replaced free of charge.

(b) Any complaints as to condition or quality relating to part of an order will not affect the liability of the Buyer to make payment within the stipulated time in respect of the remainder of the order. No claim by the Buyer in respect of the Goods shall be accepted or deemed to have been accepted by the Company save by an acceptance in writing signed by a director of the Company. For the avoidance of doubt no employee representative or agent of the Company is authorised to make any representations concerning the Goods or these Terms and Conditions save as agreed in writing and signed by a director of the Company and the Company shall not be liable for any such representations which were not so confirmed.

(c) The Company gives no guarantees or warranties whether specific or implied that the Goods are fit for the purpose for which the Buyer intends to use such Goods whether known or unknown to the Company at the time of the Buyer placing the order other than they are fit for the particular purpose or purposes specified by the manufacturer of the Goods in its literature published from time to time or contained inside the packaging of the Goods.

(d) All other warranties terms and conditions relating to the fitness for purpose of the Goods or otherwise and

whether implied by statute or common law or otherwise are hereby excluded to the extent permitted by law.

(e) Notwithstanding anything contained in these Terms and Conditions no liability for death or personal injury caused by negligence of the Company is excluded or limited in any way whatsoever.

9. Settlement Terms:

(a) Subject to any special terms agreed in writing between the Seller and the Buyer. The payment shall be made in full without set-off or counterclaim within 30 days of delivery of the Goods and the Company shall have the right to cancel or suspend any further orders for Goods in the event that earlier invoices are overdue at the time a further order is received or due to be dispatched.

(b) After the expiration of 30 days from delivery of the Goods the Company shall be entitled to charge interest on the outstanding balance at the rate of 24% per annum from that date until the date of settlement.

(c) In the event that payment is not made within 30 days of delivery of the Goods (without prejudice to any other rights or remedies of the Company) the Company shall be entitled to charge to the Buyer all costs expenses and other liabilities incurred by the Company in obtaining payment including without prejudice to the generality of the above the costs of any collection agency instructed by the Company.

10. Insolvency of Buyer:

(i) This clause applies if:

(a) the Buyer makes any involuntary arrangement with its creditors or (being an individual or firm) becomes bankrupt or (being a company) becomes subject to an administration order or goes into liquidation (otherwise than for the purpose of amalgamation or reconstruction); or (b) an encumbrance takes possession or a receiver is appointed of any of the property or assets of the Buyer; or (c) the Buyer ceases or threatens to cease to carry on business; or

(d) the Seller reasonably apprehends that any of the events mentioned above is about to occur in relation to the Buyer and notifies the Buyer accordingly.

(ii) If this clause applies then, without prejudice to any other right or remedy available to the Seller, the Seller shall be entitled to cancel the contract or suspend any further deliveries under the contract without any liability to the Buyer and if the goods have been delivered but not paid for, the price shall become immediately due and payable notwithstanding any previous agreement or arrangement to the contrary.

11. Liability:

(i) The Seller's liability whether in respect of one claim or in the aggregate arising out of any contract shall not exceed the purchase price payable under the contract.

(ii) Except as specifically provided in these Conditions, and for death or personal injury resulting from the Seller's negligence, no liability is accepted for any direct or indirect costs, damages or expenses relating to damage to property or injury or loss to any person, firm or company or for any loss of profits or production arising out of or occasioned by any defect in or failure of goods or materials or parts thereof supplied by the Seller.

(iii) The Seller will not be held responsible for unusual wind conditions or turbulence or climatic conditions or geographical conditions which may affect the operation of any chimney and/or appliance. It is for the Buyer to satisfy himself of the suitability of any product intended to be used in any particular location.

(iv) The seller will not be held responsible for opinions expressed by its sales team regarding suitability for installation or performance of its products.

12. Jurisdiction:

All orders accepted by the Company for sale and supply of Goods to a Buyer in Scotland and any dispute arising there from shall be governed by Scottish law and subject to the non-exclusive jurisdiction of the Scottish Courts otherwise all orders accepted by the Company shall be governed by English law and subject to the jurisdiction of the English Courts.

13. Force Majeure:

The Company shall not be deemed to be in breach of contract or otherwise be liable by reason of any delay in performance or non-performance of any of its obligations hereunder to the extent that such delay or non-performance is due to strike lockout, industrial action or any circumstance beyond the reasonable control of the Company.

14. Preservation:

Any order placed by the Buyer for Goods from the Company and which is governed by these Terms and Conditions may at the option of the Company be registered into books of Council and Session in Scotland for preservation and execution and the Buyer in placing such an order with the Company shall be deemed by their acceptance of the Terms and Conditions hereof, to have agreed to this.

Terms & Conditions issued January 2016

All Prices stated in this pricelist exclude VAT.

Trade counters

1 Greenflame Installations Limited (PH26 3TA)

Tel: 01479 872383
www.greenflameinstallations.com
info@greenflameinstallations.co.uk

2 G Christie and Sons Ltd (EH6 7HB)

Tel: 0131 554 6116
www.gchristies.co.uk
sales@gchristies.co.uk

3 1st Supplies Flue & Chimney Centre (FK2 9HG)

Tel: 01324 634 100
www.1stsuppliesscot.co.uk
office@1stsuppliesscot.co.uk

4 Auldtion Stoves (KA3 4DR)

Tel: 01560 480 002
www.auldtionstoves.co.uk
info@auldtionstoves.co.uk

5 Fires In Stone (NE23 1WF)

Tel: 0808 147 1401
www.firesinstone.com
fireinstone@hotmail.co.uk

6 Modern Stoves (SK7 1PS)

Tel: 0161 439 1400
www.modernstoves.co.uk
moderngroupuk@gmail.com

7 Saxon Homecare Ltd (LL14 5DG)

Tel: 01691 772153
www.saxonhomecare.co.uk
sales@saxonhomecare.co.uk

8 Fireplace Finesse Ltd (PE10 9HZ)

Tel: 01778 424 841
www.fireplacefinesse.co.uk
sales@fireplacefinesse.co.uk

9 The Flue House Ltd (B69 4NP)

Tel: 0121 555 6789
www.fluehouse.com
sales@fluehouse.com

10 Ecoflue Ltd (NR35 2PG)

Tel: 01508 518863
www.ecoflue-stoves.co.uk
info@ecoflue-stoves.co.uk

11 Chase Heating (WR10 2EY)

Tel: 01386 555333
www.chaseheating.co.uk
sales@chaseheating.co.uk

12 Welsh Dragon (SA18 3RY)

Tel: 01269 842620
www.welshdragonstoves.co.uk
info@welshdragonstoves.co.uk

13 The Flue And Chimney Warehouse (CF15 9HJ)

Tel: 0292 0810 608
www.flueandchimneywarehouse.com
info@poujoulatwales.com

14 Nonfumo Flue Systems Ltd (HP14 3RP)

Tel: 01494 482044
www.fluesystems.com
sales@fluesystems.com

15 J Day Stoneworks Ltd (AL4 0NH)

Tel: 01727 823326
www.jdaystoneworks.com
jdaystoneworks@btinternet.com

16 Essex Log Burners (SS12 0JX)

Tel: 01268 744555
www.essexlogburners.com
sales@essexlogburners.com

17 The Flue and Chimney Company (BS21 6RR)

Tel: 0117 4567977
www.theflueandchimneycompany.co.uk
sales@tfacc.co.uk

18 SNH Tradecentre (CT7 0LX)

Tel: 01843 842727
www.snhtradecentre.co.uk
sales@snhuk.co.uk

19 Croydon Fireplaces (RH10 4LN)

Tel: 020 8684 1495
www.croydonfireplaces.co.uk
info@croydonfireplaces.co.uk

Distribution Centres

NORTH

Mi-Flues Ltd
Taymin Business Park, Mitcham Rd
Blackpool Lancashire, FY4 4QN

CENTRAL

Mi-Flues Ltd
Unit 3, Martin Court
Blenheim Industrial Estate, Bulwell,
Nottingham, NG6 8US

SOUTH EAST

Mi-Flues Ltd
20 Brunel Way, Thetford, Norfolk,
IP24 1HP

SOUTH WEST

Mi-Flues Ltd
Unit 5, Merlin Industrial Park
Priorswood Industrial Estate
Venture Way, Taunton, TA2 8DG

BLACKPOOL Northern Distribution

NOTTINGHAM Central Distribution

THETFORD South East Distribution

TAUNTON South West Distribution

20 The Fireplace Warehouse (Andover) Ltd (SP10 3GQ)

Tel: 01264 359777
www.fireplacewarehouseandover.co.uk
fireplacewarehouse@hotmail.com

21 Warrior Stoves Ltd (Warehouse / Showroom) (TR15 1SS)

Tel: 01209 211381
www.warriorstoves.co.uk
info@warriorstoves.co.uk

22 Village Fireplaces and Stoves (IM1 4LX)

Tel: 01624 610914
www.villagefireplaces.im
villagefireplaces@outlook.com