

## INTA SAFE-GROUP

### Introduction

The all new Inta-Safe group wall fixing bracket comprising of a wall fixing bracket with an Automatic Air Vent, 3 bar Safety Relief Valve, and Vessel Connection. This unique assembly is the ideal product for heating systems where space is limited.



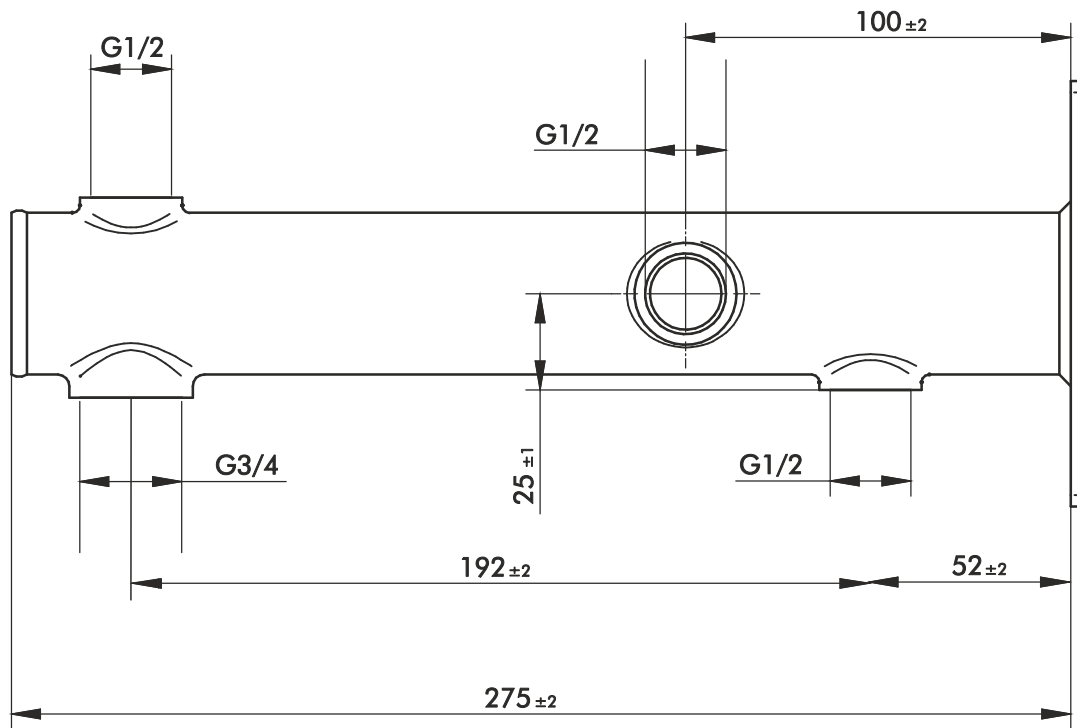
- Ease of Installation
- All In One Solution
- Robust Construction
- Brass Automatic Air Vent
- Ideal Solution for Installations Where Space is Limited

Inta Safe-group wall mounting bracket, including a automatic air vent, 3 bar safety relief valve, gauge and vessel connection with quick release

### Product Range

Description	Code
Inta Safe-group wall mounting bracket, including automatic air vent, 3 bar safety relief valve, gauge and vessel connection	ISG002
Inta Safe-group wall mounting bracket, including automatic air vent, 3 bar safety relief valve, gauge and vessel connection with quick release	ISG003

## INTA SAFE-GROUP



AIRFIELD INDUSTRIAL ESTATE, HIXON, STAFFORD, ST18 0PF  
T. 01889 272180 F. 01889 272181 SALES@INTATEC.CO.UK  
WWW.INTATEC.CO.UK