

BUTELINETM

PLUMBING SYSTEM



EQUAL TEES

BT10 - 10mm x 10mm x 10mm
BT16 - 16mm x 16mm x 16mm
BT22 - 22mm x 22mm x 22mm
BT28 - 28mm x 28mm x 28mm



REDUCING TEES

BRT020 - 10mm x 22mm x 10mm
BRT022 - 10mm x 22mm x 22mm
BRT110 - 16mm x 16mm x 10mm
BRT112 - 16mm x 16mm x 22mm
BRT220 - 22mm x 22mm x 10mm
BRT211 - 22mm x 16mm x 16mm
BRT212 - 22mm x 16mm x 22mm
BRT221 - 22mm x 22mm x 16mm



REDUCING TEES

BRT822 - 28mm x 22mm x 22mm
BRT881 - 28mm x 28mm x 16mm
BRT882 - 28mm x 28mm x 22mm
BRT828 - 28mm x 22mm x 28mm



IN LINE COPPER TO PB PIPE TEE

BTC16 - 15mm Cu x 15mm Cu x 16mm



PB PIPE TEE TO 15MM COPPER

BTKP16 - 16mm x 16mm x 15mm Cu



EQUAL CROSSES

BCX40 - 16mm x 16mm x 16mm x 16mm
BCX48 - 22mm x 22mm x 22mm x 22mm



REDUCING CROSSES

BCX42 - 22mm x 22mm x 22mm x 16mm
BCX44 - 22mm x 16mm x 22mm x 16mm
BCX46 - 22mm x 16mm x 16mm x 16mm



INLINE COUPLINGS

BS10 - 10mm x 10mm
BS16 - 16mm x 16mm
BS22 - 22mm x 22mm
BS28 - 28mm x 28mm



REDUCING COUPLINGS

BS1610 - 16mm x 10mm
BS2210 - 22mm x 10mm
BS2216 - 22mm x 16mm
BS2822 - 28mm x 22mm



MALE ADAPTORS

BMP16 - 1/2" BSPT x 16mm
BM316 - 3/4" BSPT x 16mm
BM32 - 3/4" BSPT x 22mm
BM328 - 3/4" BSPT x 28mm
BM128 - 1" BSPT x 28mm



BRASS MALE ADAPTORS

BBM16 - 1/2" BSPT x 16mm
BBM32 - 3/4" BSPT x 22mm



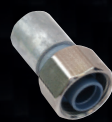
MALE BARREL NIPPLES

B421 - 1/2" BSPT x 1/2" BSPT
B422 - 1/2" BSPT x 3/4" BSPT
B423 - 3/4" BSPT x 3/4" BSPT



TAP CONNECTORS

BF16 - 1/2" BSP x 16mm
BF31 - 3/4" BSP x 16mm
BF32 - 3/4" BSP x 22mm
BSF328 - 3/4" BSP x 28mm
BSF128 - 1" BSP x 28mm



CHROME RADIATOR VALVE CONNECTOR

BF16C - 1/2" BSP x 16mm



CHROME ELBOW RADIATOR VALVE CONNECTOR

BFPE10C - 10mm Bute x 10mm Cu or Pushfit



CHROME EXTENDED ELBOW

BRE316C - 300mm 15mm CU x 16mm Bute



45 DEGREE ELBOWS

BE4516 - 16mm x 16mm
BE4522 - 22mm x 22mm
BE4528 - 28mm x 28mm



EQUAL ELBOWS

BE10 - 10mm x 10mm
BE16 - 16mm x 16mm
BE22 - 22mm x 22mm
BE28 - 28mm x 28mm



REDUCING ELBOWS

BER282 - 28mm x 22mm



MALE ELBOWS

BMEP16 - 1/2" BSPT x 16mm
BME32 - 3/4" BSPT x 22mm
BME328 - 3/4" BSPT x 28mm
BME128 - 1" BSPT x 28mm



MALE/FEMALE EXTENDED ELBOW

BMF60 - Male 1/2" BSP x Female 1/2" BSP



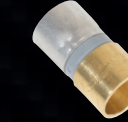
ELBOW TAP CONNECTORS

BEF16 - 1/2" BSP x 16mm
BEF32 - 3/4" BSP x 22mm
BEF328 - 3/4" BSP x 28mm
BEF128 - 1" BSP x 28mm



CHROME ELBOW TAP CONNECTOR

BEF16C - 1/2" BSP x 16mm



FEMALE SOLDERING TAILS

BF816 - 15mm Cu x 16mm Bute
BF822 - 22mm Cu x 22mm Bute
BF828 - 28mm Cu x 28mm Bute



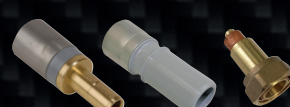
ELBOWED FEMALE SOLDERING TAILS

BFBE16 - 15mm Cu x 16mm Bute
BFBE22 - 22mm Cu x 22mm Bute



COMPRESSION FITTINGS

BMC16 - 16mm Bute PB x 15mm Cu
BMC21 - 16mm Bute PB x 22mm Cu
BMC22 - 22mm Bute PB x 22mm Cu



TRANSITION FITTINGS

BFP1610 - Brass 16mm Bute x 10mm Cu or Pushfit
BP1615 - Plastic 16mm Bute x 15mm Cu or Pushfit
BP2222 - Plastic 22mm Bute x 22mm Cu or Pushfit
BCT1510 - 15 Cu to 10mm Bute

COMPRESSION / ISOLATION TRANSITION

BCT1615 - 16mm Bute to 15mm compression



ELBOWED PUSHFIT TRANSITION FITTINGS

BPE1615 - 16mm Bute x 15mm Pushfit
BPE2222 - 22mm Bute x 22mm Pushfit



BUTE1

Adjustable 1/2" BSP Male Wall Elbow BUTE1 - 1/2" BSP x 16mm x 70mm
 Pack includes 2 adjustable male elbows, 1 red end cap, 1 blue end cap and 1 metal fixing brace



LUGGED ELBOWS

BLE76 - 1/2" BSPT x 16mm x 70mm
BLE106 - 1/2" BSPT x 16mm x 100mm



FEMALE BACK PLATE ELBOWS

BEW16 - 1/2" BSP x 16mm
BEW22 - 3/4" BSP x 22mm
BEW31 - 3/4" BSP x 16mm



MALE BACK PLATE ELBOWS

BWM16 - 1/2" BSP x 16mm x 65mm
BWM100 - 1/2" BSP x 16mm x 100mm



HOSE PLATES

BHP16 - 1/2" BSP x 16mm
BHP22 - 3/4" BSP x 22mm



HEATING MANIFOLDS

BMF310 - 22mm inlet, 3 x 10mm outlet
BMF410 - 22mm inlet, 4 x 10mm outlet
BMF316 - 22mm inlet, 3 x 16mm outlet
BMF416 - 22mm inlet, 4 x 16mm outlet



TEST PLUG

BPH15 - 1/2" BSPT



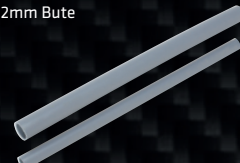
EXTENDED TEST PLUG

BP15 - 1/2" BSP Extended



PIPE END PLUGS

BPG10 - 10mm
BPG16 - 16mm
BPG22 - 22mm
BPG28 - 28mm



PB-I BARRIER PIPES (CUT LENGTHS)

BPL316 - 16mm x 3m
BPL322 - 22mm x 3m
BPL328 - 28mm x 3m



PB-I BARRIER PIPES (COILED)

BPC210 - 10mm x 25m
BPC510 - 10mm x 50m
BPC10 - 10mm x 100m
BPC26 - 16mm x 25m
BPC56 - 16mm x 50m
BPC106 - 16mm x 100m
BPC206 - 16mm x 200m
BPC22 - 22mm x 25m
BPC52 - 22mm x 50m
BPC28 - 28mm x 25m
BPC58 - 28mm x 50m



NAILED PIPE CLIPS

BC10 - 10mm
BC16 - 16mm
BC22 - 22mm
BC28 - 28mm



INTERLOCKABLE HINGED PIPE CLIPS

Can be connected together to make multiple clips
BCH16 - 16mm
BCH22 - 22mm
BCH28 - 28mm



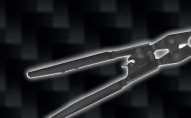
STANDARD CLAMP TOOLS

BFR16 - 16mm
BFR22 - 22mm
BFR28 - 28mm



PROCLAMP TOOLS

PRO16 - 16mm
PRO22 - 22mm
 Includes checking gauge.



MINI CLAMP TOOL

BMT10 - 10mm



ELECTRIC CLAMP TOOL AND JAWS

ET01 - Boxed kit includes tool fitted with battery, a spare battery, charger and a set of 3 jaws (as below)

ETJ16 - 16mm jaws
ETJ22 - 22mm jaws
ETJ28 - 28mm jaws
 Jaws for the electric tool are also available individually for purchase.



BUTE TOOL BELT

BT810 - Designed to fit your Bute ProClamp tools, Bute fittings, pipe cutter, tape measure, hammer, pencil and ruler.



PIPE CUTTER

BPC30 - Spring loaded



RADIATOR PIPE GUIDE & SEAL (BUILT IN)

BGRS - Part L Compliant. Provides a 'kink free', air tight, central location point for exit of 10mm pipe from internal walls



RADIATOR PIPE GUIDE & SEAL (FACE FIX)

BGRSF - Part L Compliant. Provides a 'kink free', air tight, central location point for exit of 10mm pipe from internal walls



CLAMP RINGS

BCR10 - 10mm Copper Clamp Ring
BCR10C - 10mm Chrome Effect Clamp Ring
 For use with 10mm Microbore System



BUTE GETS YOU GOING PACK

GGPI - 2 standard clamp tools (16mm and 22mm), a pipe cutter and a selection of the most popular fittings.



BUTE PRO STARTER PACK

BPP10 - 2 ProClamp Tools (PRO16 and PRO22), a pipe cutter and a selection of the most popular fittings.