

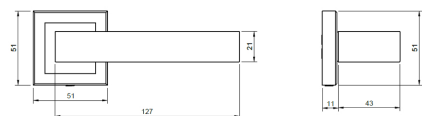
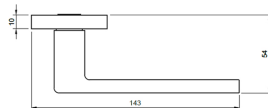
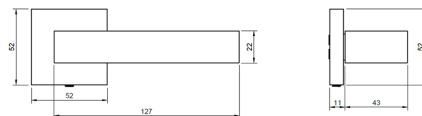
S40S(finish) STATUS[®] MONTANA

Product Code	S40S(finish)	
Product Name	STATUS [®] Montana Lever	
Product Description	Montana Lever on Square Rose	
Product Base Material	Zinc Alloy	
Available Finishes	Antique Brass (AB)	Polished Chrome (PC)
	Satin Brass (AB)	Satin Nickel (SN)
	Satin Chrome (SC)	Satin Nickel/Polished Chrome (SCPC)
	Matt Black (MB)	Urban Dark Bronze (UDB)

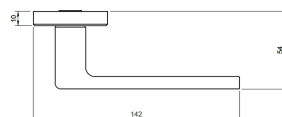
Other Information	To be cleaned using a soft damp cloth. Chemicals, solvents or abrasives will damage the applied finish. Supplied 2 x Bolt through Fixing, Wood Screws, 8 mm x 8 mm x 100 mm Split Spindle, 2 x Loctite coated Grub Screws & Allen Key. Bolt through Fixing and Grub Screws must be used. 10 Year Mechanical Guarantee subject to fitting requirements.	
Matching WC Turn:	S4WCS(finish)	
Matching ESC:	Key: S4ESCK(finish)	Euro: S4ESCE(finish)

Dimensions

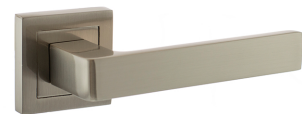
MB, AB, SB & UDB Lever Dimensions:



Other Finishes Lever Dimensions:



Product Image



Product Finish Pictured: Matt Black & Satin Nickel

Care of Finish

In the unusual event of this product failing mechanically, we will replace it free of charge, providing you can supply us with the faulty product and a receipt to show proof of purchase. If the items are not fitted in accordance with the fitting instructions, in a correct application, this may not apply.

Products have an applied finish, and we do recommend regular cleaning with a soft cloth. If necessary, you may moisten the cloth, with water. If this is not effective in removing accumulated deposits, try using a PH-neutral soap on a soft cloth, then remove the soap immediately after application, with the help of a clean, moist, soft cloth. Under no circumstances should you use an abrasive/hard tool, chemical, acidic or abrasive substance to clean these products. This will break down the applied finish. The finish may chip or scratch if subjected to impact from sharp items such as keys and jewellery. Atlantic UK retains the right to send items away for chemical testing to analyse if the product has come into contact with any abrasive or chemical substance before issuing replacements.

Please be aware that in environments where there are high concentrations of chemicals in the air, for example from the use of low-quality paint or corrosive agents,

the finish matters