

PRODUCT INFORMATION

RPC Ltd produce kerbs, channels and fitments to suit every requirement of the roadbuilder.

Our hydraulically-pressed pre-cast concrete units are strong and durable and manufactured to strict tolerances BS EN1340:2003 Concrete kerb.

Standard kerbs have a pimpled finish and come in a standard shade of concrete grey.

RPC Ltd can also offer these products in other colours such as Charcoal (CL), Buff (BF) and Red (RD).

PRODUCT SPECIFICATIONS

Product Type	Hydraulically pressed concrete kerb with a pimpled finish
Manufactured and Tested to	BS EN 1340:2003
Bending Strength	Class 3 – characteristic bending strength of 6.7 Mpa (125x255), 4.2 Mpa (125x150) with no individual result less than 4.0 Mpa
Abrasion Resistance (wide wheel test)	Class 4 - ≤ 20mm (wide wheel abrasion test)
Polished Slip Resistance Value (USRV)	potential for slip – low (dry & wet)
Tolerance on Work Dimensions	Class 3 – thickness ± 2mm: plan size ± 2mm, max difference on diagonals 2mm on < 850mm & 4mm > 850mm
Total Water Absorption	Class 2 - ≤ 6.0 as a percentage by mass
Freeze/ Thaw Resistance	Class 3 - ≤ 1.0 as a mean with no individual result value > 1.5

STANDARD DIMENSIONS

Nominal size (mm)	Product Weight (kg/approx.)	Pack Size	Pack Weight (kg/approx.)	Product Code	Colour
HB2 Half Batter Kerb 125x255x600	33	32	1056	BSKHB2600	GY/CH/BF/RD
HB2 Half Batter Kerb 125x255x914	67	16	1072	BSKHB2914	GY/CH/BF/RD
HB3 Half Batter Kerb 125x150x914	40	16	640	BSKHB3914	GY/CH/BF/RD
BN2 Bullnose Kerb 125x255x914	67	16	1072	BSKBN2914	GY/CH/BF/RD
BN3 Bullnose Kerb 125x150x914	42	16	672	BSKBN3914	GY/CH/BF/RD
Dished Channel 125x255x914	63	16	1008	BSKDC2914	GY/CH/BF/RD
Dished Channel 125x150x914	37	16	592	BSKDC3914	GY/CH/BF/RD
Dished Channel 75x255x914	41	15	615	BSKDCT914	GY/CH/BF/RD
Square Channel 125x255x914	69	16	1104	BSKSC2914	GY/CH/BF/RD

Product code ordering example: CODE+desired SIZE+desired COLOUR (i.e. BSKHB2600GY for 600mm HB2 kerb).

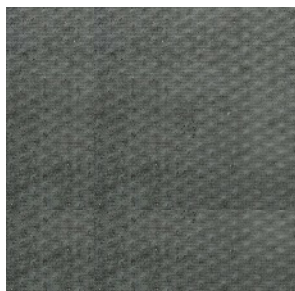
Also available in other nominal sizes, radiuses and chamfered or square edges.

STANDARD COLOURS

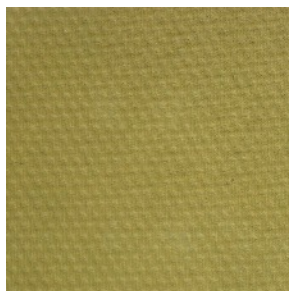
GREY (GY)



CHARCOAL (CH)



BUFF (BF)



RED (RD)



Please note that the actual product colour may slightly vary, therefore we always advice to view product samples prior ordering. Other sizes are available as a subject to consideration and lead times. For further assistance, please contact our Sales Office.