

INSTALLATION GUIDE

CAVIUS
WIRELESS
ALARM FAMILY



HEAT ALARM

Thermal heat alarm device
Model no.: 3106

This Thermal Heat Alarm is designed for areas not suitable for smoke alarms due to high risk of false alarms such as; kitchens, garages or workshops.

PLEASE READ THE INSTALLATION GUIDE CAREFULLY BEFORE INSTALLATION AND RETAIN FOR FUTURE USE.

SAFETY INSTRUCTIONS:

The device comes with a 3V lithium battery. Batteries are to be handled with care and battery powered devices should be kept out of reach of children. Do not try to recharge or burn the batteries.

TECHNICAL INFORMATION:

Cavius heat alarm detects:
1) rapidly increased temperature level
2) absolute heat level of 58 degrees C.

The maximum number of alarms that can be interlinked within a house group are 32.

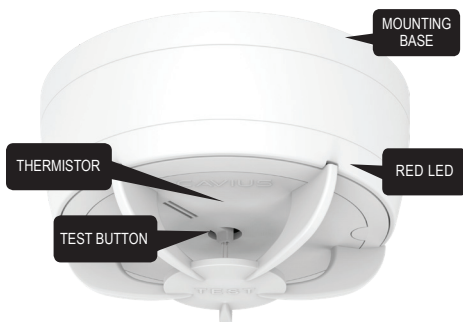
Please note: These must be alarms from the CAVIUS

WIRELESS
ALARM FAMILY

The distance between interlinked alarms depends on the house layout and they should always be tested after installation. It is not advised to get more than 10m distance between two alarms.

Diameter: 78mm. Height: 42mm.

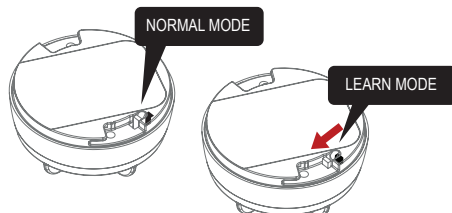
The alarm is powered by a non-replaceable 3v CR123A lithium battery.



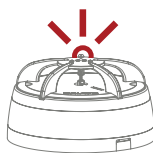
1. HOW TO SET UP AND CONNECT ALARMS:

Please note: The product label must not be removed as it contains important information regarding the product.

All alarms that need to be connected in the house should be put into 'Learn Mode' by sliding the switch on the back of the alarm to the 'Learn Mode' position.

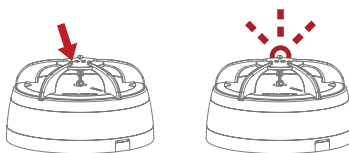


The red LED will light up to indicate that 'Learn Mode' has been selected.

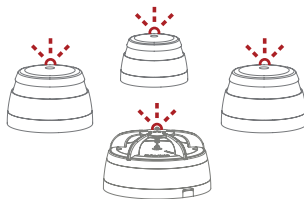


Please note that when the alarms are placed in 'Learn Mode' they can't be inserted into the mounting base.

Press and hold the test button at one alarm only, until it beeps and the LED flashes. This alarm will become the master and will start sending out a specific house code to the other alarms.



As the other alarms receive the specific house code, they will also flash the LED light.



When the red LED light flashes on all alarms, they are connected and **MUST BE SWITCHED OUT OF 'LEARN MODE' and installed.**

Label the original "Learn" alarm in order to easily add new CAVIUS Wireless Family alarms to the system.

Siting of Heat alarms



■ Heat

2. THE BEST AREAS TO INSTALL THE HEAT ALARM:

- Kitchen area
- Garage or workshop

Additional alarms increase the security.

3. AREAS WHERE NOT TO INSTALL HEAT-ALARMS:

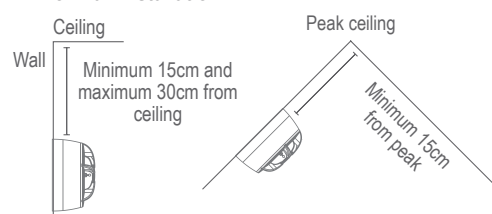
- In rooms where the temperature goes outside -10°C to +50°C.
- Bedrooms
- Lounge
- Dining room
- Hallway
- Family room

NOTE: In areas where smoldering fires occur over flaming fires, photoelectric smoke alarms are still the best to be installed.

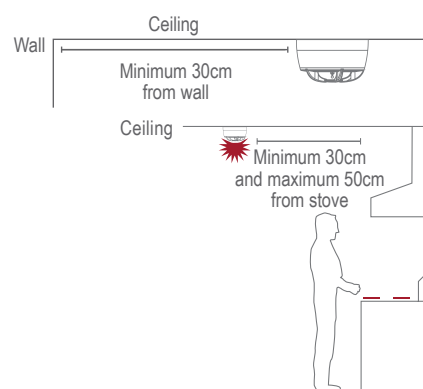
4. PLACEMENT:

The heat alarm is design to be installed on a ceiling or wall. Do not install too close to the oven/hob/stove (see drawing).

For wall installation:

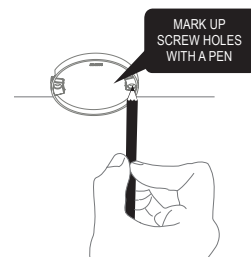


For ceiling installation:

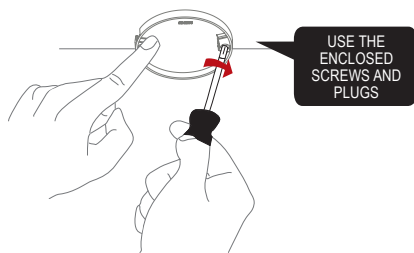


5. INSTALLING THE HEAT ALARM:

Detach the alarm from the mounting base by twisting counter clockwise.

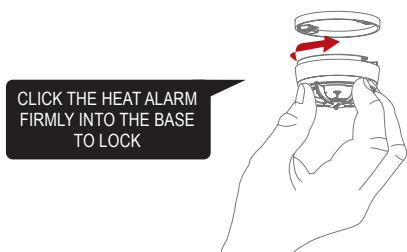


Use the mounting base ring to mark the screw holes on the ceiling or the wall.

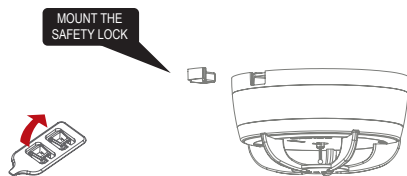


Once the mounting base is installed, attach the alarm by twisting clockwise until it clicks. If

the switch is in 'Learn Mode', the heat alarm will not be able to click into the mounting base.



6. SAFETY LOCK:



7. TEST FUNCTION:

After installation, and at least once per quarter, test all of your alarms to ensure they are operating correctly and are within range of each other.

It is recommended to check visually every week if the LED flashes correctly (every 48sec.)

Press the test button on any alarm for 2 sweeps of alarm signal. This will send out a test signal from the alarm; all other connected alarms should receive the signal within a short time. The alarms will emit a short beep and the LED will flash every 8 seconds for 2 minutes.

NOTE: Test function also allows to send a depleted RF signal to ensure an optimal operation in normal conditions.

When the test signal is sent out, the alarms will respond in two ways:

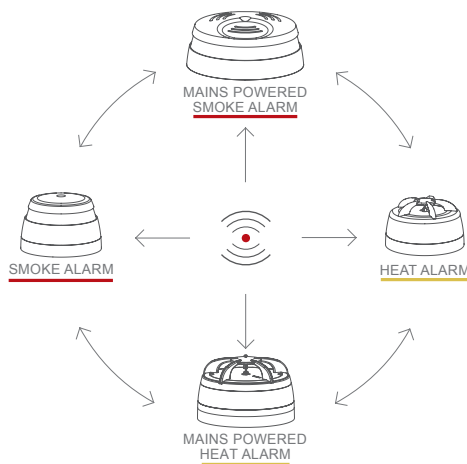
1. A single beep every 8 seconds indicates that the alarms are connected and functioning.

2. Three short beeps every 8 seconds indicates a heat sensor fault.

If required this indication can be stopped early on each alarm by a short press of the test button.

If the problem continues, please visit www.cavius.com for any trouble shooting.

8. ADD EXTRA DEVICE:



All CAVIUS interconnected alarms within the **WIRELESS** ALARM FAMILY

they run on the same frequency and use the same data protocol. This means that the wireless system can consist of a combination of smoke, heat etc.

Place all alarms into 'Learn Mode' and repeat section 1.

Always test connection to all devices by repeating test function section 7 after adding devices.

The alarm effected by the low battery will only beep, no other connected alarms will sound.

9. OTHER INFORMATION:

Do not paint the alarm.

Disposal: Please dispose properly at the end of life. This is electronic waste which should be recycled.

The heat alarm is not suitable for use as a fire safety device unless it is part of a planned fire safety system, i.e. when interconnected to one or more smoke alarm(s).

RF Frequency: 868 MHz.

Maximum radio-frequency power transmitted: 20 mW

WARNING: All alarms should be assumed as due to actual fire and the dwelling should be evacuated immediately.

WARNING: To prevent injury, this apparatus must be securely attached to the ceiling/wall in accordance with the installation instructions.

WARNING: Batteries shall not be exposed to excessive heat such as shine, fire, or the like.

Note the local country regulations regarding installation.

Hereby, Carrier Fire & Security Danmark A/S declares that the radio equipment type 3106 is in compliance with Directive 2014/53/EU.

The full text of the EU declaration of conformity is available at the following internet address: www.cavius.com

The CE mark affixed to this product confirms its compliance with the European Directives which apply to the product.

BSI Kitemark™ certified.



Carrier assumes no responsibility for any errors, which may appear in this manual. Furthermore, Carrier reserves the right to alter the hardware, software, and/or specifications detailed herein at any time without notice, and Carrier does not make any commitment to update the information contained herein. ©2023 Carrier. All Rights Reserved. All trademarks and service marks referred herein are property of their respective owners.

Manufacturer: Carrier Fire & Security Danmark A/S, Ellekær 9A, 2. Th, DK-2730. Made in China.