



ej

Product Guide

Access Covers & Gully Gratings



EJ have, since 1883, been providing expertise to service your needs

By adopting a strategy of continuous investment in our production sites, we confirm our commitment to remain a world leader in infrastructure access solutions.

Access solutions to underground networks and asset security specialist, EJ is able to offer you the most appropriate solutions with the most relevant material to suit your needs.



High-performance, resistant and elastic ductile iron for all your projects

Galvanized steel and aluminium, two high performance materials, suitable for your special projects

The **composite material**, innovative, lightweight, corrosion resistant, for your specific applications

Table of Contents

Manhole Cover Measuring	10
Manhole Cover Seals Explained	10
Iron Loading Classifications	11
Steel Loading Classifications	12
Steel Products Identification	13

Product	Description	Page
Steel Products	Pressed Steel Solid Top - Single Seal	16
	Pressed Steel Solid Top - Double Seal & Locked	17
	Chequer Plate Solid Top	18
	Internal Recessed Cover	19
	External Recessed Cover	20
	Heavy Duty External Recessed Cover	21
ALUMATIC®	ALUMATIC® Recessed	23
Aluminium Recessed	ALUMATIC® Lite Recessed	24
	ALUMATIC® Lite Vinyl	25
Iron Products	HA3 BRUNEL	28
	HA2 BRUNEL	29
	D 400 ULTRA™ Access Covers	30
	D 400 INTEGRITY™ Access Covers	31
	C 250 & B 125 Access Covers	32
	A 15 & Surface Boxes	33
	PPIC Access Covers	34
	Optional Extras	35-36
	AXIS™ Hinged Access Covers	37
	ERMATIC® Modular Access Solutions	38
	D 400 Hinged Gully Gratings	39
	D400 Double Triangular Gully Gratings	40
	C 250 Yard/Gully Gratings	41
	V-MAX™ 1:5 Profiled Gratings	42
Linear Channel Drainage	Domestic Linear Drainage	44
	Industrial Linear Drainage	46
	Industrial Linear Drainage Features	47
Access Chamber Solutions	NEXUS™ Structural	50
	NEXUS™ Structural Multiple Opportunities	51
	DATUM™ Non Structural	52
	ELITE Composite Covers	53
	SVELTO Composite Covers	54
	SWITCH™ Pole Retention System	55

Ensure the well-being and safety of your fellow citizens

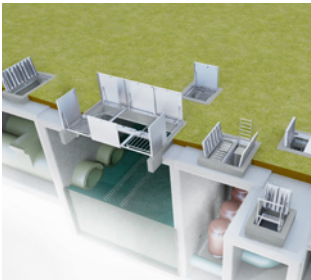
EJ, are global leaders in the design, manufacture and distribution of infrastructure access solutions.

Covering water and sewerage networks, rainwater harvesting, telecommunications and other public utility networks has been **EJ** expertise for decades.

Access your underground infrastructure in cities, railway stations, industries, water & wastewater treatment plants, airports, ports, exhibition halls, tunnels with **EJ access covers and drainage solutions**.

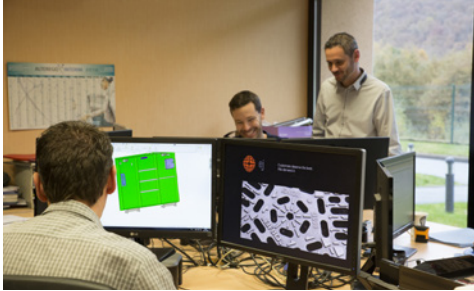
The group's strengths: achieving the highest quality standards, guaranteed safety and respect for the environment.

Its resources: qualified and committed employees.



EJ, your partner from design to completion

We operate worldwide and distinguish ourselves by providing services to our customers to offer that leverage both our global and local strengths.



To ensure every customer benefits from our global knowledge, we work together across sectors: from engineering to manufacturing, from research to customer service - from North America to Europe, from Australia to Ireland - we share facts, data and developments across all steps.



This expertise encompasses the cultural background we have acquired through internal research, road testing and participation in standardization bodies around the world.

Our research and our spirit, in targeted collaboration, have allowed us to develop the best available solutions in the field of infrastructure. Solutions that drive industry, set benchmarks for excellence and meet customers' highest expectations.

Our distribution network, manufacturing facilities and sophisticated understanding of local cultures and quality standards put us in the ideal position to offer our customers relevant and dynamic services alongside our solutions.

Our modern local production capacities and warehouses ensure fast product availability for our customers. The result: Our customers have unrivalled local access to innovations, inventories and services.



**Shared commitment.
Common bond.**

We've been on parallel paths: committed to creating the best infrastructure access solutions for our customers and backing them with unparalleled customer care. This commitment is our common bond. It melts distance, cultures and language. It's what strengthens us as a company under our name EJ.

Together, we are the world leader in the design, manufacture and distribution of access covers and gratings for water, sewer, drainage, telecommunications and utility networks.

**Global expertise.
Local understanding.**

As a worldwide company, we excel at serving our customers by leveraging our global and local strengths. To ensure every customer benefits from our global learning, we collaborate across departments. From Design to Manufacture, Research to Customer Care—from North America to France, Australia to UK: we share facts, data and developments across all disciplines.

This expertise includes the intelligence we gain through in-house research, on-road testing, and through participation in Standards committees around the world. Our research and collaboration give us the edge in creating the best infrastructure solutions available: solutions that lead the industry, act as best-in-class benchmarks, and satisfy the most demanding customer expectation.

Our distribution network, manufacturing facilities, and highly developed understanding of local cultures and standards puts us in a perfect place to back our solutions with knowledgeable and responsive customer service. Our modern, regional production capabilities put inventories within quick reach of our customers. The result: Our customers have unrivalled access to innovations, inventories and service in the field.

**Our people:
Our core strength.**

Along with our distributors and agents, we take pride in what we do. We are honest and genuinely committed to creating and maintaining real, long-lasting relationships. We work where you work, we live where you live. We hire the right people, and give them superior knowledge. It is our employees' world class knowledge and expertise that continues to keep us leading in our globally competitive industry.

We are fortunate to have a long history of attracting and retaining outstanding people. Our workforce is diverse, knowledgeable and loyal, and often includes multiple generations from the same family. Our passionate and dedicated teams repeatedly earn recognition for their high degree of professionalism.

We are now a global enterprise that spans 5 continents promoting innovation, quality and a commitment to customer service.



Our EMEA iron foundry is located in **Picardie**, France. With a 100,000 tonnes capacity, 42 hectares (over 100 acres). We are ISO 9001, ISO 14001, ISO 50001 and OHSAS 18001 certified for: quality, management, environment and health and safety.



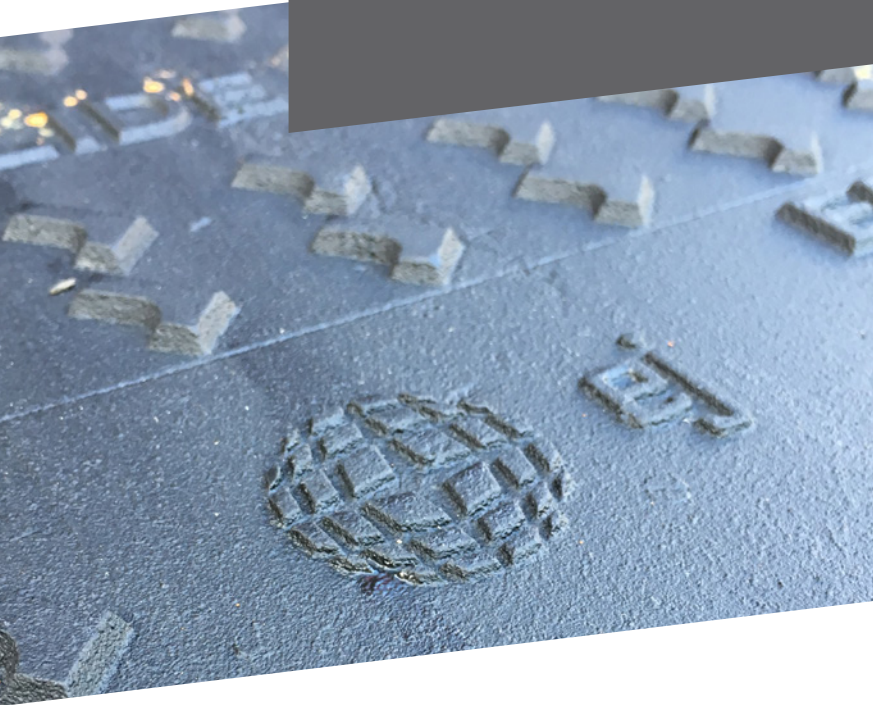
Our UK head office is located in **Nuneaton**. The primary UK operation is run from here and the site includes a fabricated steel facility and 3 acres of yard storage. Management system certification includes ISO 9001 for quality.



Located in **Ardennes**, France, we have another fabrication facility containing the most advanced technology in Europe such as plasma cutting & robotic welding, and provides high volume capacity as well as tailor-made solutions to the marketplace. Management system certification includes ISO 9001, ISO 14001, and OHSAS 18001 for quality, environment, health and safety.



The Basics

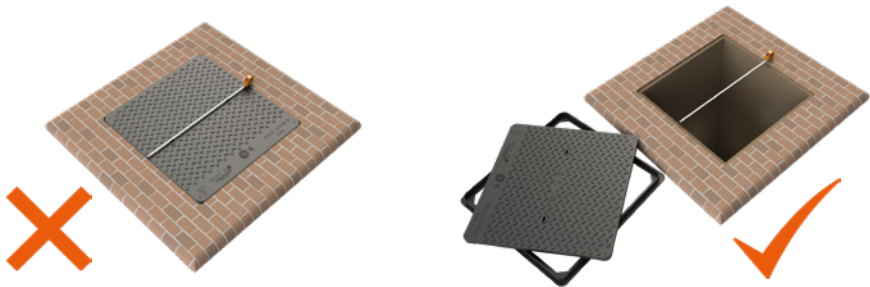


Product Guide

Manhole Cover Sizing Explained

All covers & frames are manufactured to clear opening sizes, put simply this is the size of the hole which the cover and frame is to span. The clear opening size of the cover is the inside frame dimension and consequently the cover & frame will then rest on the surrounding chamber.

It is vitally important to establish the clear opening of the chamber, as a cover which is too small will have an unsupported frame and will fail. A cover which is too large in some instances may be acceptable, however if the cover has underbracing to the lid (often the case on larger, heavier units) this may clash with the chamber and will not fit correctly.

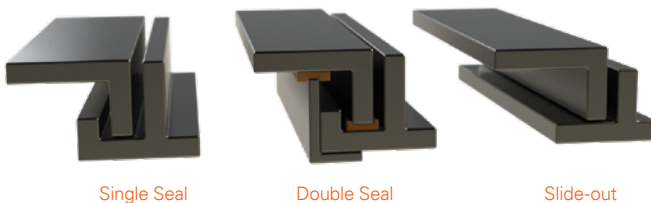


Product Guide

Manhole Cover Seals Explained

Covers and frames are available unsealed, single sealed and double sealed. D 400 iron covers & frames are unsealed as they are double triangular and each lid only sits on the frame in three places. Slide-out products are also unsealed.

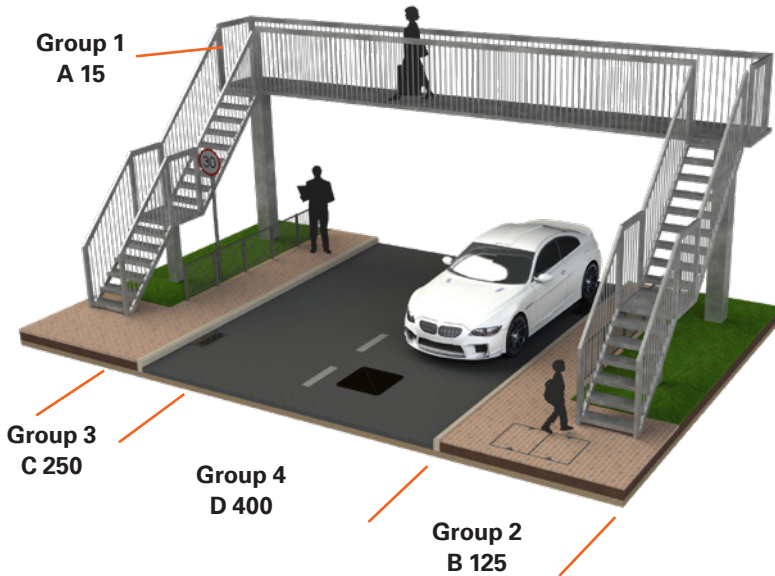
Most access covers are single seal as standard. A single seal cover can help prevent the egress of odours and ingress of water when the sealing groove is filled with grease. There are a small amount of covers that are available single rubber sealed, these usually feature a single 'O' ring seal. Double seal covers feature two rubber seals, the two rubber seals prevents odours escaping from the chamber when not under pressure.



Product Guide

Iron Products Loading Classifications

BS EN 124 is a performance standard which states the design and load performance of access covers and gully gratings to suit predefined types of applications. Products designed to BS EN 124 are grouped and classified depending on their place of installation, from pedestrian applications to airport applications.



Loadings	EN 124 Class	Area of Installation	BS EN 124 Test Load
Group 1	A 15	For use in pedestrian areas where vehicles have no access.	15 kN
Group 2	B 125	For use in car parks & pedestrian areas where infrequent vehicle access is likely.	125 kN
Group 3	C 250	For access covers & gully gratings in areas where slow moving heavy traffic have access and for gully gratings in carriageway not exceeding 500 mm from the kerbside & 200 mm into the verge/path.	250 kN
Group 4	D 400	For use in carriageways of roads, hard shoulders and parking areas.	400 kN
Group 5	E 600	For use in areas where high wheel loads are present.	600 kN
Group 6	F 900	For use in areas where extremely high wheel loads are present.	900 kN

Product Guide

Steel Products Loading Classifications

Steel products within this brochure fall into two different classifications, Domestic & FACTA loadings.

The domestic load classification state the gross laden vehicle weight (total vehicle weight) of vehicles which are likely to travel over them i.e. 5 tonne gross laden vehicle. This is where the abbreviation GLVW is derived. Domestic products are designed only for Pedestrian to Frequent use Domestic applications.

Products manufactured to FACTA load classifications have been designed to an industry standard load specification from Pedestrian applications to applications where slow moving lorries have access.

Please also note: steel covers and frames are only designed for slow moving traffic applications* not main roads - for main roads, heavy duty D400 ductile iron covers are required.

Pedestrian



5 Tonne



Class AA



Class AAA



10 Tonne



17 Tonne



25 Tonne



Class B



Class C



Class D



Domestic Loading (GLVW)	Domestic Application
Pedestrian	Pedestrian Only
5 Tonne	Garden/Landscaped Area
10 Tonne	Infrequent Use Domestic Application
17 Tonne	Moderate Use Domestic Application
25 Tonne	Frequent Use Domestic Application

FACTA Class	Wheel Load (Slow Moving Pneumatic)	Wheel Load (Slow Moving Solid)	Area of Installation
AA	1.5 tonne	N/A	Pedestrian Only
AAA	2.5 tonne	0.5 tonne	Occasional Slow Moving Cars
B	5.0 tonne	0.75 tonne	Slow Moving Cars
C	6.5 tonne	1.0 tonne	Slow Moving Heavy Vehicles
D	11 tonne	3.0 tonne	Slow Moving Lorries

* Slow moving wheel loads are deemed to be speeds no greater than 20 mph, in low intensity trafficked areas. Where higher intensity traffic is expected, a higher load classification of cover is recommended

Product Guide

Steel Products Identification

All steel products are labelled to help with identification. The label features the size, product code, loading and also barcode for easy identification.

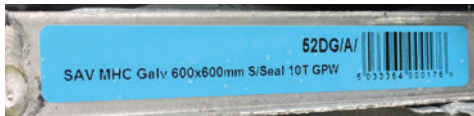
Certain steel products feature a coloured label to indicate the load classification of the product.



White = 2.5 tonne GLVW loading



Yellow = 5 tonne GLVW loading



Blue = 10 tonne GLVW loading



Green = 17 tonne GLVW loading



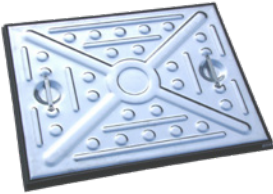
Red = 25 tonne GLVW loading



Steel Products



PRESSED STEEL
Domestic Solid Top



50CGP



51DG

Single Seal

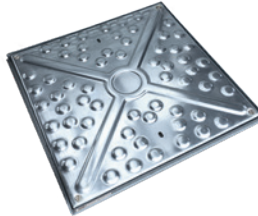
Standard Sizes

EJ Code	Clear Opening (mm)	Frame Depth (mm)	Description	Loading (GLVW)
50BG	450 x 450	25	Galvanised Steel Cover & Frame	Pedestrian
51BG	450 x 450	25	Galvanised Steel Cover & Frame	5 Tonne
52BG	450 x 450	25	Galvanised Steel Cover & Frame	10 Tonne
50CG	600 x 450	25	Galvanised Steel Cover & Frame	Pedestrian
50CGP	600 x 450	30	Galvanised Steel Cover & Polyprop Frame	Pedestrian
51CG	600 x 450	25	Galvanised Steel Cover & Frame	5 Tonne
51CGP	600 x 450	30	Galvanised Steel Cover & Polyprop Frame	5 Tonne
52CG	600 x 450	25	Galvanised Steel Cover & Frame	10 Tonne
52CGP	600 x 450	30	Galvanised Steel Cover & Polyprop Frame	10 Tonne
53CG	600 x 450	25	Galvanised Steel Cover & Frame	17 Tonne
53CGP	600 x 450	30	Galvanised Steel Cover & Polyprop Frame	17 Tonne
55CG	600 x 450	25	Galvanised Steel Cover & Frame	25 Tonne
55CGP	600 x 450	30	Galvanised Steel Cover & Polyprop Frame	25 Tonne
50DG	600 x 600	25	Galvanised Steel Cover & Frame	Pedestrian
51DG	600 x 600	25	Galvanised Steel Cover & Frame	5 Tonne
52DG	600 x 600	25	Galvanised Steel Cover & Frame	10 Tonne
53DG	600 x 600	25	Galvanised Steel Cover & Frame	17 Tonne

PRESSED STEEL
Domestic Solid Top



51CGP-LS



DS51DG/4

Double Seal & Locked

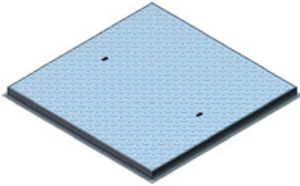
Standard Sizes

EJ Code	Clear Opening (mm)	Frame Depth (mm)	Description	Loading (GLVW)
50CGP-LS	600 x 450	30	Galvanised Steel Cover & Polyprop Frame, Locked & Sealed	Pedestrian
51CGP-LS	600 x 450	30	Galvanised Steel Cover & Polyprop Frame, Locked & Sealed	5 Tonne
52CGP-LS	600 x 450	30	Galvanised Steel Cover & Polyprop Frame, Locked & Sealed	10 Tonne
DS50DG/4	600 x 600	25	Galvanised Steel Cover & Frame, Locked & Double Steel Seal*	Pedestrian
DS51DG/4	600 x 600	25	Galvanised Steel Cover & Frame, Locked & Double Steel Seal*	5 Tonne
DS52DG/4	600 x 600	25	Galvanised Steel Cover & Frame, Locked & Double Steel Seal*	10 Tonne

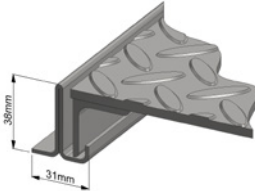
* Double steel seal suitable for grease

CHEQUER PLATE

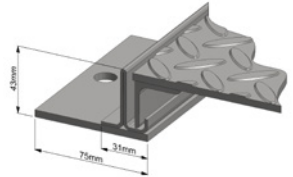
Solid Top



PS100 AA,AAA,B



Section Through - Class AA, AAA



Section Through - Class B

PS100

Standard Sizes

EJ Code	Clear Opening (mm)	Frame Depth (mm)	Description	Loading (FACTA)
F101EG	750 x 600	38	Galvanised Steel Cover & Frame, ST17506001112311	Class AA
F101EG/4	750 x 600	38	Galvanised Steel Cover & Frame, Locked & Double Seal, ST175060014S2F	Class AA
F102EG	750 x 600	38	Galvanised Steel Cover & Frame, ST17506002112311	Class AAA
F101FG	750 x 750	38	Galvanised Steel Cover & Frame, ST175075011010	Class AA
F101GG	900 x 600	38	Galvanised Steel Cover & Frame, ST19006001112311	Class AA
F101JG	900 x 900	38	Galvanised Steel Cover & Frame, ST19009001112311	Class AA
F102GG	900 x 600	38	Galvanised Steel Cover & Frame, ST19006002112311	Class AAA
F102JG	900 x 900	38	Galvanised Steel Cover & Frame, ST19009002112311	Class AAA
F104CG	600 x 450	43	Galvanised Steel Cover & Frame, ST16004504112311	Class B
F104DG	600 x 600	43	Galvanised Steel Cover & Frame, ST16006004112311	Class B

FACTA AA, AAA, B

38mm or 43mm Deep Frame Chequer plate solid top cover and frame. The product is underbraced where required to meet the stated load. All products are manufactured under an ISO 9001 Quality system. This product is hot dip galvanised to BS EN ISO 1461 as standard.

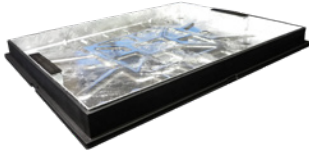
Options:

- Double Polyethylene Seal
- Locking - Stainless Steel Screws
- Locking - Hex Pin
- Peephole Inspection Point
- Engraved Badging e.g. Water, Gas

Other sizes available upon request, please contact sales for more information

FACTA Class C & D designs also available.

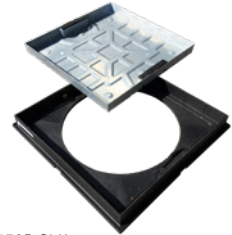
INTERNAL Concrete Infill Recessed Covers



3104C-SLK



D3104B



R2-T450P-SLK

Rubber Seal & Locked

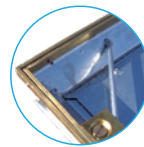
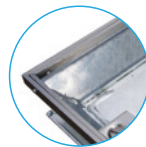
Standard Sizes

Code	Clear Opening (mm)	Frame Depth (mm)	Description	Loading (GLVW)*
D3104A	300 x 300	58	Galvanised Steel Cover & Frame, Double Rubber Sealed & Locked	10 Tonne
D3104B	450 x 450	58	Galvanised Steel Cover & Frame, Double Rubber Sealed & Locked	10 Tonne
D3104C	600 x 450	58	Galvanised Steel Cover & Frame, Double Rubber Sealed & Locked	10 Tonne
D3104D	600 x 600	58	Galvanised Steel Cover & Frame, Double Rubber Sealed & Locked	10 Tonne
D3104E	750 x 600	58	Galvanised Steel Cover & Frame, Double Rubber Sealed & Locked	10 Tonne
D3104F	750 x 750	58	Galvanised Steel Cover & Frame, Double Rubber Sealed & Locked	10 Tonne
D3104G	900 x 600	58	Galvanised Steel Cover & Frame, Double Rubber Sealed & Locked	10 Tonne
D3104H	900 x 750	58	Galvanised Steel Cover & Frame, Double Rubber Sealed & Locked	10 Tonne
R2-T450	Ø450	58	Galvanised Steel Cover & Frame, SQ to Round, Double Rubber Sealed	10 Tonne
R2-T450P-SLK	Ø450	56	Galvanised Steel Cover & Polyprop Frame, SQ to Round, SLK	10 Tonne
3104B-SLK	450 x 450	56	Galvanised Steel Cover & Polyprop Frame, SLK Lifting Keys	10 Tonne
3104C-SLK	600 x 450	56	Galvanised Steel Cover & Polyprop Frame, SLK Lifting Keys	10 Tonne
3104D-SLK	600 x 600	56	Galvanised Steel Cover & Polyprop Frame, SLK Lifting Keys	10 Tonne

*Must be infilled with C25 concrete to achieve full loading

SLK Lifting Keys

Covers which are infilled with concrete or block paving are notoriously heavy - the SLK heavy duty keys make lid removal considerably safer. The SLK keys have been tested and are capable of taking up to 600kg in force. UK Patent GB 2450631



Brass or Stainless Steel Edging

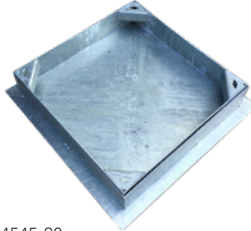
Brass or Stainless Steel Decorative edging is available on the D3104A-G.

EXTERNAL

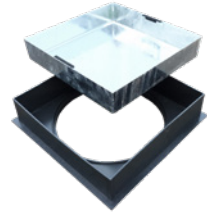
Recessed Covers



DR6045P-SLK



DR4545-80



R2-450P-SLK

Block/Slab/Paving Infill

Standard Sizes

Code	Clear Opening (mm)	Internal Recess (mm)	Description	Loading (GLVW)
DR3030-80	300 x 300	80	Galvanised Steel Cover & Frame	5 Tonne
DR4545-80	450 x 450	80	Galvanised Steel Cover & Frame	5 Tonne
DR4545	450 x 450	100	Galvanised Steel Cover & Frame	5 Tonne
DR6045	600 x 450	100	Galvanised Steel Cover & Frame	5 Tonne
M6045-100	600 x 450	100	Galvanised Steel Cover & Frame	10 Tonne
DR60P-SLK	600 x 450	65	Galvanised Steel Cover & Polyprop Frame, SLK Keys	5 Tonne
DR6045-SLK	600 x 450	80	Galvanised Steel Cover & Frame, SLK Keys	10 Tonne
DR6045P-SLK	600 x 450	80	Galvanised Steel Cover & Polyprop Frame, SLK Keys	10 Tonne
DR6060-80	600 x 600	80	Galvanised Steel Cover & Frame	5 Tonne
DR6060	600 x 600	100	Galvanised Steel Cover & Frame	5 Tonne
DR6060P-80SLK	600 x 600	80	Galvanised Steel Cover & Polyprop Frame, SLK Keys	5 Tonne
M6060P-80SLK	600 x 600	80	Galvanised Steel Cover & Polyprop Frame, SLK Keys	10 Tonne
DR6060P-100SLK	600 x 600	100	Galvanised Steel Cover & Polyprop Frame, SLK Keys	5 Tonne
M6060P-100SLK	600 x 600	100	Galvanised Steel Cover & Polyprop Frame, SLK Keys	10 Tonne
M6060-80	600 x 600	80	Galvanised Steel Cover & Frame	10 Tonne

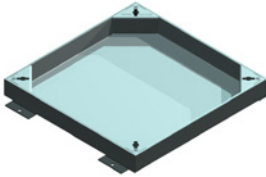
Square to Round Block/Slab/Paving Infill

Standard Sizes

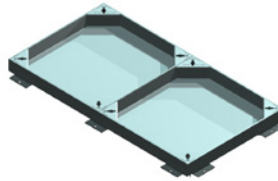
R2-300P-SLK	Ø320	80	Galvanised Steel Cover & Polyprop Frame, SQ to Round, SLK	10 Tonne
R2-450P-SLK	Ø450	80	Galvanised Steel Cover & Polyprop Frame, SQ to Round, SLK	10 Tonne

Other sizes available upon request, please contact sales for more information

HEAVY DUTY EXTERNAL Recessed Covers



PS6000



PS6700

PS6000

Standard Sizes

Clear Opening (mm)	Suffix
300 x 300	A
450 x 450	B
600 x 450	C
600 x 600	D
750 x 600	E
750 x 750	F
900 x 600	G
900 x 750	H
900 x 900	J

PS6700

Standard Sizes

Clear Opening (mm)	Suffix
900 x 600	G
900 x 750	H
900 x 900	J
1000 x 1000	K
1200 x 600	L
1200 x 750	M
1200 x 900	N
1500 x 600	P
1500 x 750	Q

PS6000/PS6700

Single/Twin recessed block pavior infill cover and frame. Recessed lids are designed to enable either a block or slab infill. The lids are underbraced where necessary to meet the stated FACTA load rating. All products are manufactured under an ISO 9001 Quality system. This product is hot dip galvanised to BS EN ISO 1461 as standard.

Product Loading Codes

Class AA = PS6001
Class AAA = PS6002
Class B = PS6004
Class C = PS6005
Class D = PS6006

Product Loading Codes

Class AA = PS6701
Class AAA = PS6702
Class B = PS6704
Class C = PS6705
Class D = PS6706

Options

Stainless Steel Edging
 Locking
 Unsealed
 Single Polyethylene Seal
 Double Polyethylene Seal
 Badged i.e. Water, Gas

Internal Depth Options

Block Size	Internal Recess	Frame Depth	Code
up to 50 mm	70 mm	83 mm	7
up to 65 mm	90 mm	103 mm	9
up to 80 mm	100 mm	113 mm	1
up to 100 mm	130 mm	143 mm	3

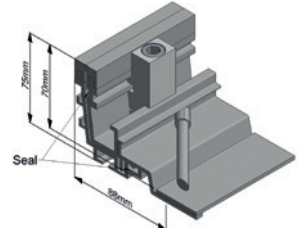
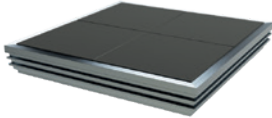
Specification/Ordering:

Please choose the product load code, size and lid recess suffix, and any extras i.e. PS6004D7

ALUMATIC®
Recessed & Solid Top



ALUMATIC®
Single Recessed
FACTA Class B - 5T (SMWL)



Section through detail.

Triple sealed recessed access cover suitable for a high-quality floor finish up to a depth of 50 mm of tile, carpet, blocks or terrazzo infill. Aluminium or brass edging strips are 8 mm deep, which allows edges to be ground and polished in-situ up to 6 mm.

Covers are designed to be infilled with C40 concrete to achieve full loading. The Alumatic® features M10/M12 Lock & Lift devices. The Alumatic® also boasts triple sealing facilities comprising of a primary and a secondary seal to protect against the ingress of dirt and fluids, alongside an inner grease seal to prevent the ingress/egress of gas, air and water. All products are manufactured under an ISO 9001 Quality system. This product is manufactured from Aluminium alloy 6063 and 6082 for low corrosion and superior finish.

Single units are gas, air and watertight at normal atmospheric pressure.

The ALUMATIC® range has a number of unique features designed to improve appearance and performance:

Features:

- 8 mm deep architectural edgings
- Lock & Lift as standard
- Stainless steel locking bolts
- Triple sealed (including grease seal)
- High resistance to corrosion
- Accommodates up to 50 mm infill

Options:

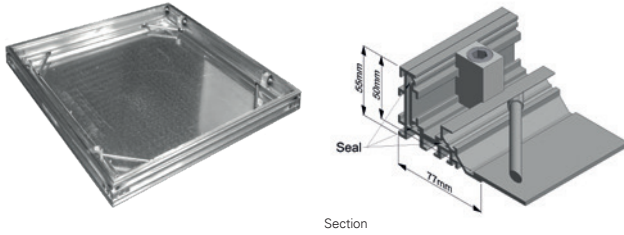
- Aluminium Edging
- Brass Edging
- 2 Hours Fire Integrity Rated

Standard Sizes

Code	Clear Opening (mm)	O/all Frame (mm)	Frame Depth (mm)	No of Covers
AL43030	300 x 300	428 x 428	76	Single
AL44545	450 x 450	578 x 578	76	Single
AL46045	600 x 450	728 x 578	76	Single
AL46060	600 x 600	728 x 728	76	Single
AL47560	750 x 600	878 x 728	76	Single
AL47575	750 x 750	878 x 878	76	Single
AL49075	900 x 750	1028 x 878	76	Single

Non-standard sizes available. Twin, duct, multiple configurations available.

ALUMATIC® LITE
Recessed
FACTA Class AA - 1.5T (SMWL)



Triple sealed recessed access cover suitable for up to 18 mm tile/floor finish infill. Covers are designed to be infilled with C40 concrete to achieve full loading. The Alumatic® Lite features M10/M12 Lock & Lift devices. The Lite also boasts triple sealing facilities comprising of a primary dirt seal to protect against the ingress of dirt, alongside secondary and tertiary EPE inner seals to prevent the ingress/ egress of gas, air and water. All products are manufactured under an ISO 9001 Quality system. This product is manufactured from Aluminium alloy 6063 and 6082 for low corrosion and superior finish.

Duct runs and beamed multiple configurations are available. Single units are gas, air and watertight at normal atmospheric pressure. Twin units feature a removable support beam and are watertight at normal atmospheric pressure.

Features:

- Lock & Lift as standard
- Stainless steel locking bolts
- Triple sealed
- High resistance to corrosion
- Accommodates up to 18 mm infill

Options:

- Aluminium Edging
- Brass Edging

Standard Sizes

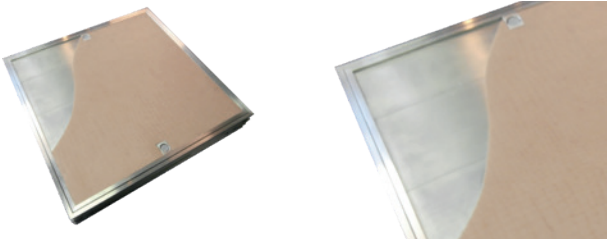
Code	Clear Opening (mm)	O/all Frame (mm)	Frame Depth (mm)	No of Covers
AL23030	300 x 300	410 x 410	55	Single
AL24545	450 x 450	560 x 560	55	Single
AL26045	600 x 450	710 x 560	55	Single
AL26060	600 x 600	710 x 710	55	Single
AL27560	750 x 600	860 x 710	55	Single
AL27575	750 x 750	860 x 860	55	Single
AL29075	900 x 750	1010 x 860	55	Single
AL29090	900 x 900	1010 x 1010	55	Twin
AL210060	1000 x 600	1010 x 710	55	Twin
AL210075	1000 x 750	1010 x 860	55	Twin
AL212060	1200 x 600	1310 x 710	55	Twin

[Non-standard sizes available](#)

ALUMATIC® LITE

Vinyl

FACTA Class A - 0.6T (SMWL)



Triple sealed recessed access cover suitable for up to 3 mm vinyl finish infill. Covers are infilled with aluminium planking to leave a 3 mm recess. The Alumatic® Lite features M10/M12 Lock & Lift devices. The Lite also boasts triple sealing facilities comprising of a primary dirt seal to protect against the ingress of dirt, alongside secondary and tertiary EPE inner seals to prevent the ingress/ egress of gas, air and water. All products are manufactured under an ISO 9001 Quality system. This product is manufactured from Aluminium alloy 6063 and 6082 for low corrosion and superior finish.

Single units are gas, air and watertight at normal atmospheric pressure. Twin units feature a removable support beam and are watertight at normal atmospheric pressure.

Features:

- Lock & Lift as standard
- Stainless steel locking bolts
- Triple sealed
- High resistance to corrosion
- Accommodates up to 18 mm infill

Options:

- Aluminium Edging
- Brass Edging

Standard Sizes

Code	Clear Opening (mm)	O/all Frame (mm)	Frame Depth (mm)	No of Covers
ALV3030	300 x 300	410 x 410	55	Single
ALV4545	450 x 450	560 x 560	55	Single
ALV6045	600 x 450	710 x 560	55	Single
ALV6060	600 x 600	710 x 710	55	Single
ALV7560	750 x 600	860 x 710	55	Single
ALV7575	750 x 750	860 x 860	55	Single
ALV9075	900 x 750	1010 x 860	55	Single
ALV9090	900 x 900	1010 x 1010	55	Twin

[Non-standard sizes available](#)

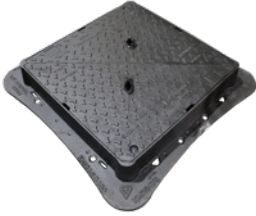


Iron Products

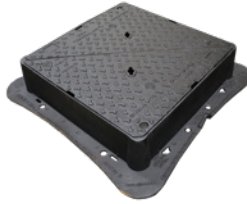


D400

HA³ BRUNEL



HA3 BRUNEL 600 S



HA3 BRUNEL 600 H

EN 124:2015 D 400, CD534 - High Intensity

Standard Sizes

EJ Code	Legacy Code	Clear Opening (mm)	O/all Frame (mm)	Frame Depth (mm)	D/Tri Lids
HA3 BRUNEL 600 S	KD10	600 x 600	790 x 790	100	1
HA3 BRUNEL 600 H	KD10-6	600 x 600	790 x 790	150	1
HA3 BRUNEL 675 S	KD12	675 x 675	845 x 845	100	1
HA3 BRUNEL 675 H	KD12-6	675 x 675	845 x 845	150	1

Features:

- Manufactured to BS EN 124 class D400
- BSI Kitemarked for third party assurance of quality
- HA3 BRUNEL products comply with CD 534
- Suitable for carriageways and fast moving traffic
- AMP™ anti-movement technology frames
- Non-rock three point suspension for stability and silent operation
- Ductile iron to ISO 1083 for improved weight to strength ratio
- Black coated finish
- Trademark 4L raised anti-slip pattern (78+ PSRV)
- Frame levelling features
- 80mm+ Depth of insertion
- Large/reinforced cover seating points
- Turreted corner frame for added strength and rigidity

Options:

- Standard Locking
- High Security Locking
- Badging e.g. FVV, SW, Motorway Comms
- Sealing Plates
- Pressure Plates (150mm deep products only)
- Ventilation
- Safety Grids
- Security Plates

D400

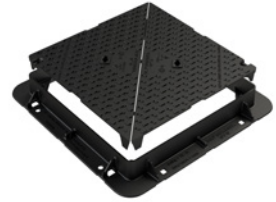
HA² BRUNEL



HA2 BRUNEL 600



HA2 BRUNEL 675



HA2 BRUNEL 675

EN 124:2015 D 400, CD534 - High Intensity

Standard Sizes

EJ Code	Legacy Code	Clear Opening (mm)	O/all Frame (mm)	Frame Depth (mm)	D/Tri Lids
HA2 BRUNEL 600 SL1	KD10	600 x 600	786 x 786	100	1
HA2 BRUNEL 600 HL1	KD10-6	600 x 600	786 x 786	150	1
HA2 BRUNEL 675 SL1	KD12	675 x 675	855 x 855	100	1
HA2 BRUNEL 675 HL1	KD12-6	675 x 675	855 x 855	150	1

Features:

- Manufactured to BS EN 124 class D400
- BSI Kitemarked for third party assurance of quality
- HA2 BRUNEL products comply with CD 534
- HA2 BRUNEL products comply with BS 7903
- Suitable for carriageways and fast moving traffic
- AMP™ anti-movement technology frames
- HA2 BRUNEL range had trademark 4L raised anti-slip pattern (78+ PSRV)
- HA2 BRUNEL range has frame levelling features
- Non-rock three point suspension for stability and silent operation
- Ductile iron to ISO 1083 for improved weight to strength ratio
- Black coated finish

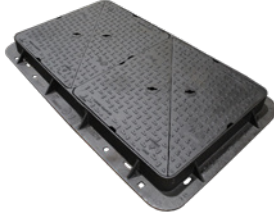
Options:

- Standard Locking
- High Security Locking
- Badging e.g. FW, SW, Motorway Comms
- Sealing Plates
- Pressure Plates (150mm deep products only)
- Ventilation
- Safety Grids
- Security Plates

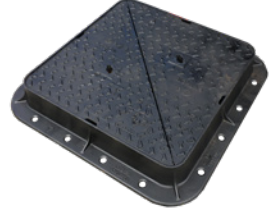
D400 ULTRA



ULTRA - KD16



ULTRA - KD19



PYTHON 100

EN 124 D 400 ULTRA CD534 Specification - High Intensity

Standard Sizes

EJ Code	Legacy Code	Clear Opening (mm)	O/all Frame (mm)	Frame Depth (mm)	D/Tri Lids
ULTRA - KD14	-	750 x 600	900 x 750	100	1
ULTRA - KD14-6	-	750 x 600	900 x 750	150	1
ULTRA - KD15	-	750 x 750	900 x 900	100	1
ULTRA - KD15-6	-	750 x 750	900 x 900	150	1
ULTRA - KD16	-	900 x 600	1050 x 750	100	1
ULTRA - KD16-6	-	900 x 600	1050 x 750	150	1
ULTRA - KD17	-	900 x 900	1050 x 1050	100	1
ULTRA - KD17-6	-	900 x 900	1050 x 1050	150	1
ULTRA - KD19	-	1220 x 675	1370 x 825	100	2
ULTRA - KD19-6	-	1220 x 675	1370 x 825	150	2
ULTRA - D1212*	-	1200 x 1200	1350 x 1350	150	2
PYTHON 100	-	600 x 600	750 x 750	100	1
PYTHON 150	-	600 x 600	750 x 750	150	1
WATT 100	-	675 x 675	830 x 830	100	1
WATT 150	-	675 x 675	840 x 840	150	1
SINCLAIR	-	750 x 600	910 x 760	100	1
HUDSON 100	-	1220 x 675	1365 x 830	100	2
HUDSON 150	-	1220 x 675	1365 x 830	150	2

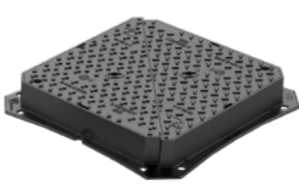
*Does not conform to EN 124 due to size.

Other sizes available upon request, please contact sales for more information

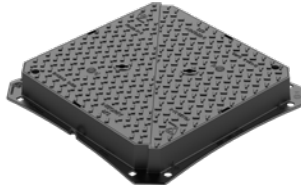
Features:

- Manufactured to BS EN 124 class D400
- BSI Kitemarked for third party assurance of quality
- ULTRA products comply with CD 534
- ULTRA products comply with BS 7903
- Suitable for carriageways and fast moving traffic
- AMP™ anti-movement technology frames
- Non-rock three point suspension for stability and silent operation
- Ductile iron to ISO 1083 for improved weight to strength ratio
- Black coated finish

D400
INTEGRITY



INTEGRITY 600 H

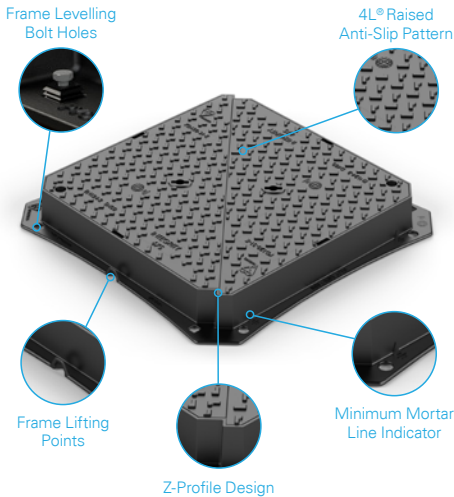


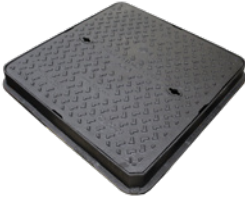
INTEGRITY 675 S

EN 124 D 400 INTEGRITY - Low Intensity

Standard Sizes

EJ Code	Legacy Code	Clear Opening (mm)	O/all Frame (mm)	Frame Depth (mm)	D/Tri Lids
INTEGRITY 450 S	KD800	450 x 450	585 x 585	100	1
INTEGRITY 6045 S	KD900	600 x 450	735 x 585	100	1
INTEGRITY 600 S	KD100	600 x 600	740 x 740	100	1
INTEGRITY 600 H	KD100-6	600 x 600	740 x 740	150	1
INTEGRITY 675 S	KD120	675 x 675	810 x 810	100	1
INTEGRITY 675 H	KD120-6	675 x 675	810 x 810	150	1

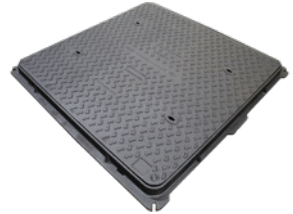


C250 & B125**WORTHINGTON & MACADAM**

WORTHINGTON 600



MACADAM 7560



MACADAM 900

EN 124 C250

Standard Sizes

EJ Code	Legacy Code	Clear Opening (mm)	O/all Frame (mm)	Frame Depth (mm)
WORTHINGTON 450R	KD31C	Ø450	Ø550	58
WORTHINGTON 450	KD60C	450 x 450	540 x 540	75
WORTHINGTON 6045	KD61C	600 x 450	700 x 550	75
WORTHINGTON 600	KD62C	600 x 600	700 x 700	75
WORTHINGTON 9060	KD65C	900 x 600	1000 x 700	75

EN 124 B125 Single Seal

Standard Sizes

MACADAM 300	KD300	305 x 305	385 x 385	47
MACADAM 450SR	KD30	Ø433	510 x 510	25
MACADAM 450R	KD31	Ø450	Ø555	22

EN 124 B125 Slide-out

Standard Sizes

MACADAM 450	KD3240S	450 x 450	540 x 540	40
MACADAM 6045	KD3340S	600 x 450	692 x 542	40
MACADAM 600	KD3440S	600 x 600	690 x 690	40
MACADAM 7560	KD3540S	750 x 600	840 x 690	40
MACADAM 9060	KD3740S	900 x 600	990 x 690	40
MACADAM 900	KD39	900 x 900	1000 x 1000	50
MACADAM 12267	KD3840S	1220 x 675	1320 x 775	40

Other sizes available upon request, please contact sales for more information

A15 & SURFACE BOXES
WREN & DERWENT



WREN 6045



DERWENT 150 S



DERWENT 3823 FH

EN 124 A15

Standard Sizes

EJ Code	Legacy Code	Clear Opening (mm)	O/all Frame (mm)	Frame Depth (mm)
WREN 6045	E10B1	600 x 450	672 x 530	26
WREN 600	E10C1	600 x 600	675 x 674	25

Surface Boxes & Fire Hydrants

Standard Sizes

EJ Code	Legacy Code	Clear Opening (mm)	O/all Frame (mm)	Frame Depth (mm)	Loading	BS 5834	Type
DERWENT 150 S	KB2D	150 x 150	230 x 230	100	Grade A	Part 2	Double triangular
DERWENT 225 S	KB3D	229 x 229	310 x 310	100	Grade A	Part 2	Double triangular
DERWENT 300 S	KB4D	300 x 300	385 x 385	100	Grade A	Part 2	Double triangular
TYPEA	-	140 x 115	152 x 152	75	Ped	-	Hinged solid top
TYPEA-P*	-	152 x 120	170 x 155	75	Ped	-	Hinged solid top
DERWENT 3823 FH	KFH125	380 x 230	500 x 350	125	Grade A	Part 3	Solid Top Fire Hydrant
DERWENT 4328 FH	KFH2	430 x 280	535 x 385	105	Grade A	Part 3	Solid Top Fire Hydrant

*Polypropylene

Other sizes available upon request, please contact sales for more information

PPIC & ACCESSORIES

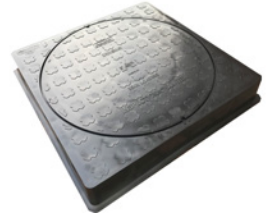
Access Covers



ECOPLAS 450R



CHAMBERMATE 450R



D45B

35 kN Polypropylene Covers & Frames

Standard Sizes

EJ Code	Legacy Code	Clear Opening (mm)	O/all Frame (mm)	Frame Depth (mm)	Features
D30B	-	Ø300	410 x 410	30	Locking
D45B	-	Ø442	562 x 562	85	Locking
ECOPLAS 450R	E10APL	Ø450	Ø550	30	Single Seal, Locking
CHAMBERMATE 450R	CM-450C	Ø450	Ø550	30	Single Seal, Recessed

A 15 Cast Iron Cover & Plastic Frame

Standard Sizes

WREN PF 450R	E10ACP	Ø450	Ø551	43	Single Seal
--------------	--------	------	------	----	-------------

Step Irons

Standard Sizes

EJ Code	Description
PE-STEPB	380 mm wide double width step iron - plastic encapsulated (building into brickwork)
PE-STEP C	380 mm wide double width step iron - plastic encapsulated (retro fixing into concrete)

Keys

Standard Sizes

EJ Code	Description
H-KEY	Heavy duty keys (per pair)
L-KEY	Light duty keys (per pair)
Q-KEY	Recessed covers lifting keys (per pair)



H-KEY



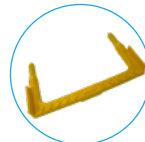
L-KEY



Q-KEY



PE-STEPB



PE-STEP C

Optional Extras

Sealing & Pressure Plates



Sealing Plates

Galvanised steel sealing plates fitted to the underside of the frame. The plate is bolted to a subframe and is fitted with a rubber seal. Prevents the ingress of surface water and the egress of odours at normal atmospheric pressure.

Pressure Plates

Galvanised steel pressure plates fitted to the underside of the frame. The plate is bolted to a subframe using M10 bolts at approximately 100 mm centres and is fitted with a neoprene seal. Designed to withstand 0.5 bar of pressure (5 metre head).

Fitted to 150 mm deep products only.

Badging

Badging options include 'Embossed' and 'Applied' badges. Badges include: GAS, CATV, FW, SW, FH, AV, SV, STREET LIGHTING, MOTORWAY COMMS etc. Bespoke badging is also available, contact sales for further information.



Locking

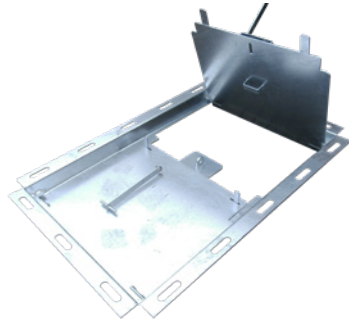
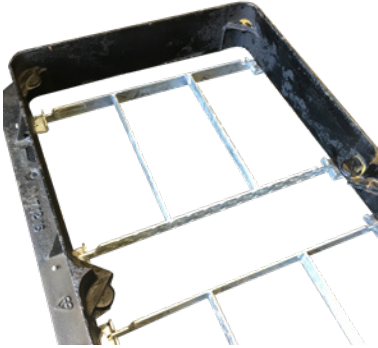
Various stainless steel locking options are available on most of our iron covers and gully gratings. For more information please contact sales.



Optional Extras

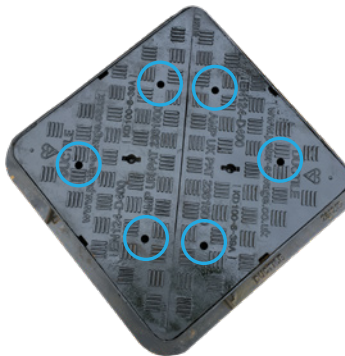
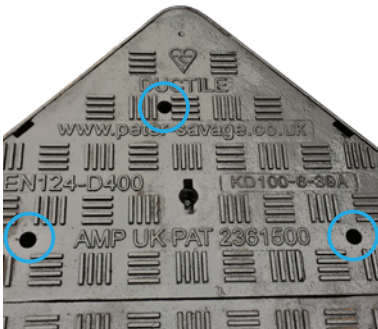
Safety Grids & Security Plates

Our safety grids & security plates are designed to fit our iron products where applicable. For more information please contact our sales department.



Air Release Holes

Access covers are drilled with 3 number 19 mm diameter holes per triangular cover



AXIS™ Hinged Access Covers



AXIS™ Hinged Access Covers

Manufactured to BS EN 124 class D 400 the range of AXIS™ hinged covers comply with CD534 & BS 7903. The maximum effort of 25Kg/f required to open the covers mean they also meet with HSE recommendations.



The AXIS™ range of hinged covers feature sequenced opening for ease of use and are supplied locked as standard with a single captive bolt.



For more information on the AXIS™ range of hinged covers [contact sales](#).

ERMATIC® Modular Access Covers



ERMATIC® Modular Access Covers

A comprehensive and highly specified range of access covers for a wide variety of underground services. The range consists of standard units made up of one, two or three covers as well as duct runs and beamed multiple units.



Cover types include recessed for concrete infill, recessed for block paving and solid top with anti-slip surface, in all loading classes from B 125 to F 900.



For more information on the ERMATIC® range of gratings [contact sales](#).

D400
SEVERN & TWEED
Hinged



TWEED 3743 S



TWEED PROMENADE 3743 S



SEVERN 450 S

EN 124 D 400 INTEGRITY™ - Low Intensity - CD534 Specification

Standard Sizes

EJ Code	Legacy Code	Over Grate (mm)	O/all Frame (mm)	Frame Depth (mm)	HA102	Waterway (cm ²)	Gully
TWEED 3743 S	KD500	430 x 370	580 x 483	100	-	1037	450
TWEED 3743 H	KD500-6	430 x 370	580 x 483	150	-	1037	450
TWEED PROMENADE 3743 S*	KD500P	430 x 370	580 x 483	100	-	864	450
TWEED PROMENADE 3743 H*	KD500P-6	430 x 370	580 x 483	150	-	864	450

*Pedestrianised

EN 124 D 400 ULTRA™ CD534 Specification - High Intensity

Standard Sizes

EJ Code	Legacy Code	Over Grate (mm)	O/all Frame (mm)	Frame Depth (mm)	HA102	Waterway (cm ²)	Gully
SEVERN 3138 S*	KD51D	380 x 310	480 x 370	100	-	876	375
SEVERN PROMENADE 3138 S*	KD51DP	380 x 310	560 x 410	100	-	370	375
SEVERN 3550 S	KD52D	495 x 345	645 x 440	100	-	1140	450
SEVERN 3743 S	KD50DNN	370 x 430	496 x 610	100	R	1200	450
SEVERN 3743 H	KD50D6N	370 x 430	496 x 610	150	R	1200	450
SEVERN 450 S	KD53D	450 x 450	640 x 540	100	R	1425	450
SEVERN 4560 S	KD54D	600 x 450	790 x 540	100	Q	1815	450
BUFFALO	-	375 x 430	530 x 525	100	-	1140	450
FORTH 100	-	446 x 443	592 x 530	100	-	1139	450
PROMENADE 100**	-	446 x 443	592 x 530	100	-	1139	450

*Not CD 534 Compliant

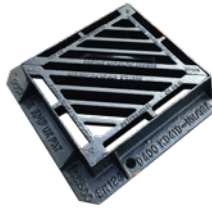
**Pedestrianised

Other sizes available upon request, please contact sales for more information

D400
AVON & HUMBER
Double Triangular



HUMBER 600 S



AVON 4044 S

EN 124 D 400 ULTRA™ CD534 Specification - High Intensity

Standard Sizes

EJ Code	Legacy Code	Over Grate (mm)	O/all Frame (mm)	Frame Depth (mm)	HA102	Waterway (cm ²)	Gully
AVON 4044 S	KD410	400 x 440	552 x 526	100	R	1138	450
AVON 4044 H	KD410-6	400 x 440	552 x 526	150	R	1138	450
HUMBER 600 S*	KD43D	600 x 600	752 x 752	100	P	2363	600
HUMBER 600 H*	KD43D6	600 x 600	752 x 752	150	P	2363	600
HUMBER 10045 H	KD44D6	1000 x 450	1170 x 547	150	P	3805	450

*4 Flanged

C250

**MERSEY & TEES
Gully/Yard Gratings**



MERSEY 3138 S



TEES DISHED 225



TEES 300

EN 124 Gully Gratings

Standard Sizes

EJ Code	Legacy Code	Over Grate (mm)	O/all Frame (mm)	Frame Depth (mm)	HA102	Waterway (cm ²)	Gully
MERSEY 3138 S	KD51C	380 x 310	480 x 370	75	S	890	375

EN 124 Yard Gratings

Standard Sizes

EJ Code	Legacy Code	Over Grate (mm)	O/all Frame (mm)	Frame Depth (mm)	HA102	Waterway (cm ²)	Gully
TEES 225	KD70	225 x 225	285 x 263	50	-	237	228
TEES DISHED 225*	KD71	225 x 225	285 x 263	50	-	215	228
TEES 300	KD72C	325 x 325	385 x 365	75	T	530	304
TEES DISHED 300*	KD73C	325 x 325	385 x 365	75	-	495	304

*Dished

All units rear hinged as standard

Other sizes available upon request, please contact sales for more information

V-MAX 1:5 Profiled Drainage Gratings



V-MAX 1:5 Profiled Drainage Gratings

Manufactured to BS EN 124 class D 400 the 1:5 profiled drainage gratings are designed for slip formed drainage channels. The design of the gratings allow for concrete slip forming machines to run over the gratings.



The V-MAX gratings feature fully removable gratings, non-rock wedge seats and AMP™ patented anti-movement technology frames.



For more information on the V-MAX range of gratings [contact sales](#).

Linear Channel Drainage



DOMESTIC

Linear Channel Drainage



LIB1



LIB GALV/ LIB PLAS



LIB SLOT DOMESTIC

EN 1433 Polymer Concrete

EJ Code	Internal Width (mm)	Invert Depth (mm)	O/all Width (mm)	O/all Depth (mm)	Description
LIB1	100	60	120	78	1000 mm c/w Galvanised Steel Grate
LIB3	-	-	120	288	500 mm Sump c/w Galvanised Steel Grate & basket
LIB4	-	-	120	78	End cap

EN 1433 Polypropylene

EJ Code	Internal Width (mm)	Invert Depth (mm)	O/all Width (mm)	O/all Depth (mm)	Description	Waterway (cm ² per grate)
LIB PLAS	100	65	144	90	1000 mm c/w Polypropylene Grate	299
LIB GALV	100	65	144	90	1000 mm c/w Galvanised Steel Grate	283
LIB CORNER	-	-	157	264	C/w 135 x 135 mm Polyprop Grate	-
LIB SUMP	-	-	157	264	C/w 135 x 135 mm Polyprop Grate inc basket	-
PLAS END	-	-	138	70	Polypropylene End Cap	-

EN 1433 Polypropylene - Lib Slot Domestic

LIB SLOT DOM	100	87	120	194	1m slot drain channel, 2 x 0.5m grates
LIB SLOT EC	-	-	115	110	End cap
LIB SLOT EC/110	-	-	117	130	110mm base outlet
LIB SLOT QD	-	-	123	194	Quad connector

LIB1 Accessories

LIB PLAS/LIB GALV Accessories

LIB SLOT DOMESTIC Accessories



LIB3



PLAS END



LIB SUMP



LIB SLOT QD



LIB SLOT EC/110



LIB SLOTEC



INDUSTRIAL Linear Channel Drainage



LDC100-6-100



LIBERTY SLOT



EN 1433 C 250 Loading - 100 mm Internal Width

Standard Sizes

EJ Code	Length (mm)	Invert Depth (mm)	Description	Waterway (cm ² per grate)
LDCP100-6-50	1000	72	Polypropylene channel base & edge, Iron grate c/w 6mm slots	282
LDCP100-6-100	1000	122	Polypropylene channel base & edge, Iron grate c/w 6mm slots	282
LDCP100-6-150	1000	172	Polypropylene channel base & edge, Iron grate c/w 6mm slots	282
LDCP100-6-400	500	422	Polypropylene base & edge, Iron grate c/w 6mm slots. Sump	282
LDC100-6-50	1000	72	Polypropylene channel base & steel edge, Iron grate c/w 6mm slots	282
LDC100-6-100	1000	122	Polypropylene channel base & steel edge, Iron grate c/w 6mm slots	282
LDC100-6-150	1000	172	Polypropylene channel base & steel edge, Iron grate c/w 6mm slots	282
LDC100-6-400	500	422	Polypropylene base & steel edge, Iron grate c/w 6mm slots. Sump	282
LDC100-8-50	1000	72	Polyprop channel base & steel edge, Composite grate c/w 8mm slots	144
LDC100-8-100	1000	122	Polyprop channel base & steel edge, Composite grate c/w 8mm slots	144
LDC100-8-150	1000	172	Polyprop channel base & steel edge, Composite grate c/w 8mm slots	144

EN 1433 D 400 Loading - 100 mm Internal Width

Standard Sizes

LDD100-6-50	1000	72	Polypropylene channel base & steel edge, Iron grate c/w 6mm slots	235
LDD100-6-100	1000	122	Polypropylene channel base & steel edge, Iron grate c/w 6mm slots	235
LDD100-6-150	1000	172	Polypropylene channel base & steel edge, Iron grate c/w 6mm slots	235
LDD100-6-400	500	422	Polypropylene base & steel edge, Iron grate c/w 6mm slots. Sump	235

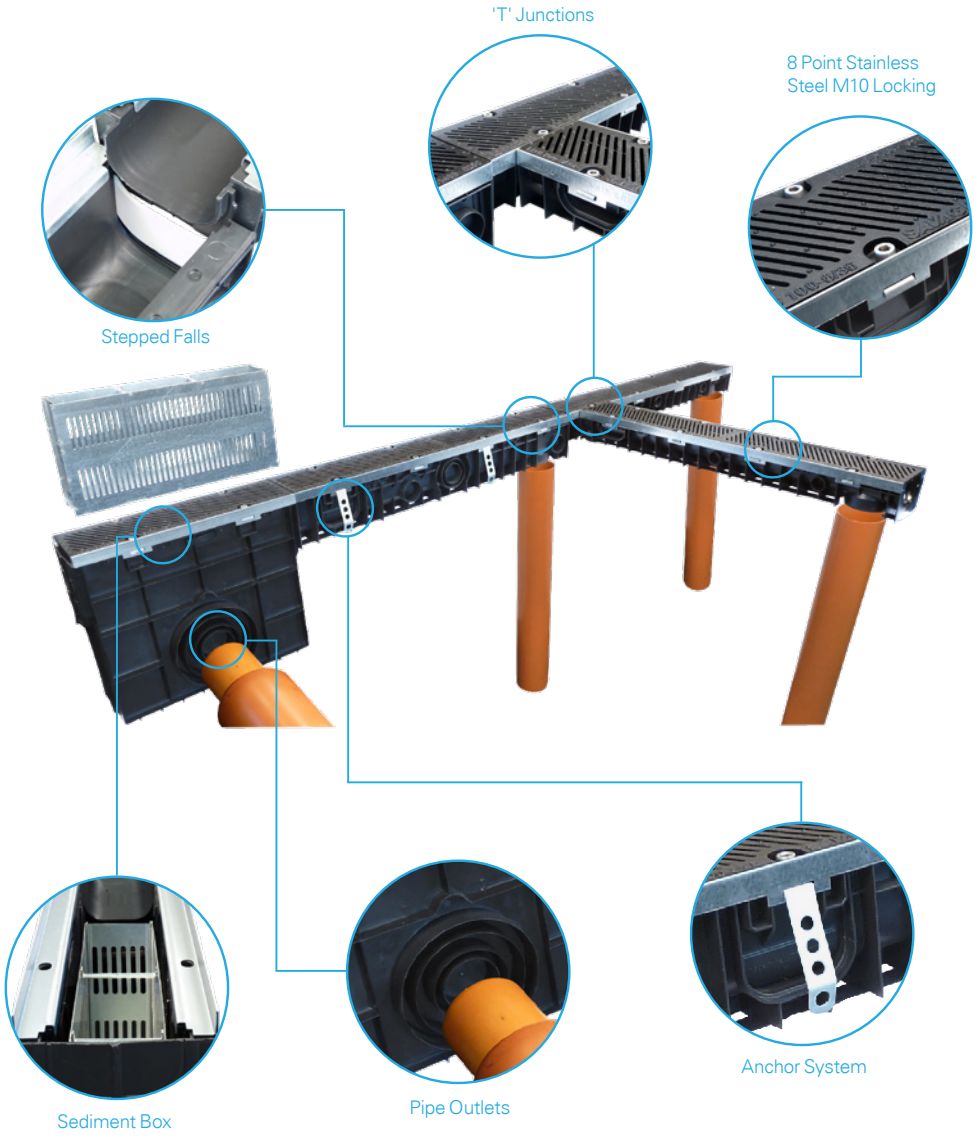
LIBERTY SLOT C 250 Loading

Standard Sizes

LDLS100-15-100	1000	121	Polypropylene channel base & Galvanised Steel Slot Drain	-
LDLS100-15-500	500	421	Polypropylene channel base & Galvanised Steel Slot Drain Sump	-

Other sizes available upon request, please contact sales for more information

Features



LIBERTY DRAIN™ Linear Channel Drainage



LIBERTY DRAIN™ Linear Channel Drainage

The system provides an economical and effective method for the collection and conveying of surface water. The innovative design and materials utilised enables the installation process to be easier than ever.



The LIBERTY DRAIN™ system is defined by EN 1433 and the range includes C 250, D 400 and F 900 loadings. Available in a variety of widths from 100 mm to 300 mm and depths from 50 mm to 300 mm.

For more information on the LIBERTY DRAIN™ system [contact sales.](#)

Access Chamber Solutions

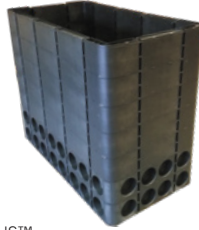


ACCESS CHAMBERS

Structural



NEXUS™



NEXUS™

NEXUS™ Structural Chambers

Standard Sizes

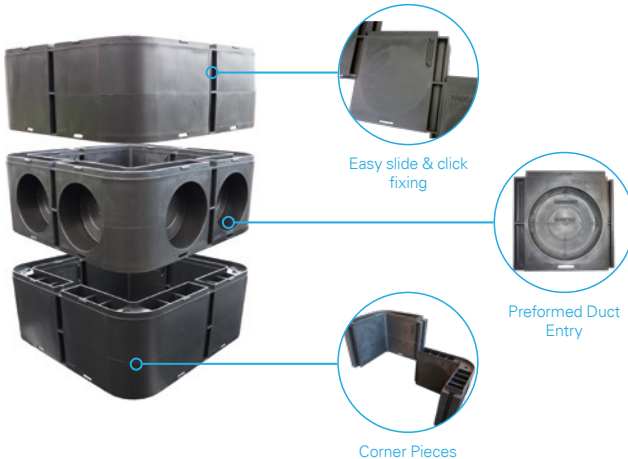
EJ Code	Clear Opening (mm)	O/all (mm)	Entry Points
NX3030DE	300 x 300	400 x 400	8
NX3030RP	300 x 300	400 x 400	-
NX4530DE	450 x 300	550 x 400	10
NX4530RP	450 x 300	550 x 400	-
NX4545DE	450 x 450	550 x 550	12
NX4545RP	450 x 450	550 x 550	-
NX6045DE	600 x 450	700 x 550	14
NX6045RP	600 x 450	700 x 550	-
NX6060DE	600 x 600	700 x 700	16
NX6060RP	600 x 600	700 x 700	-

NEXUS™ Features

- Twin Wall
- Vertical 40 Tonne Load Test
- Modular System
- Raiser & Duct Entry
- 64 & 114mm Duct Entry
- Increments of 150mm
- 150mm Deep Sections

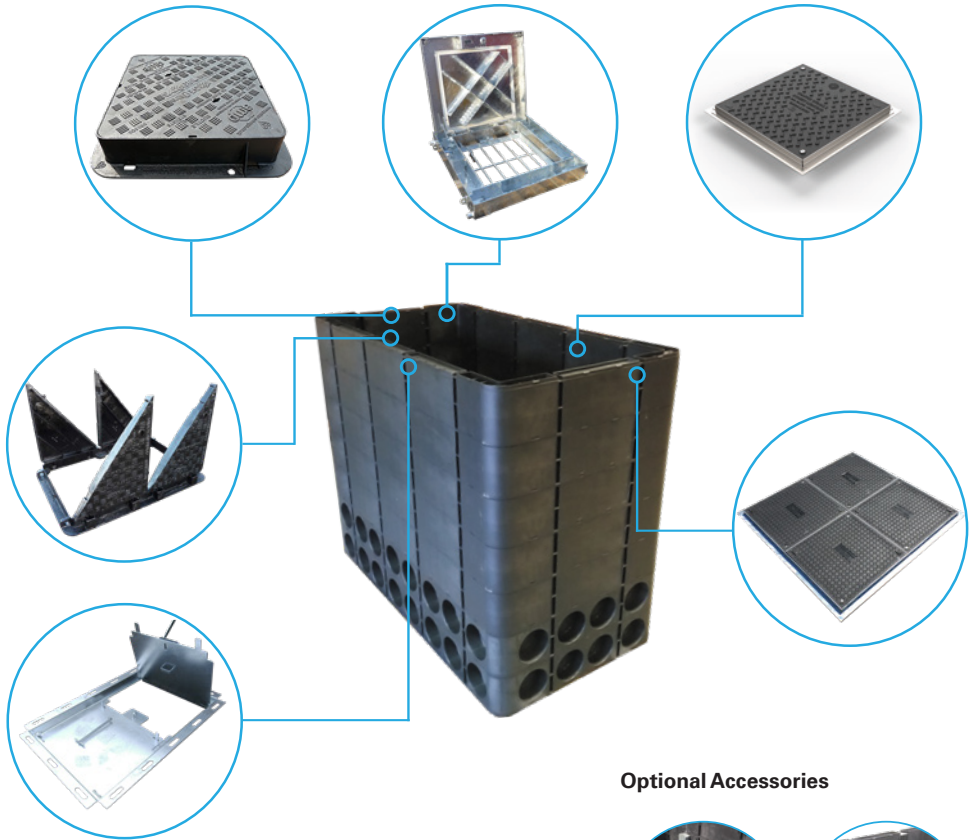
NEXUS™ Benefits

- Easy one way fit and construction.
- Lightweight system conforms to HSE recommendations.
- Strong twin wall structural design.
- Duct entry points easily knocked out with a hammer or cut with holesaw.
- Manufactured from a 100% recycled material.
- Larger sizes available in 150 mm increments.



Multiple Opportunities

The NEXUS™ structural chamber has been designed to work in conjunction with a vast range of EJ access covers and frames. This flexibility allows you to use the NEXUS™ chamber in a variety of applications including, Motorway Communications, Traffic Signals, Street Lighting, MOD and Turning Pit applications.



Optional Accessories



Bearer Bar & Brackets



Step Irons with Anti tear fixing plates

ACCESS CHAMBERS

Non-structural



Assembled



Assembled with Raiser



Assembled with Cover

DATUM™ Non-structural Chambers

Standard Sizes

EJ Code	Clear Opening (mm)	O/all Dim (mm)	Depth (mm)	Entry Points
MC1	275 x 295	374 x 394	380	8
MC2	450 x 300	545 x 390	380	10
MC3	450 x 450	550 x 550	380	12
MC4	600 x 450	690 x 545	380	14
MC5	600 x 600	680 x 680	380	16
MC7	900 x 450	1020 x 545	380	18

Raiser Units

MC2/R	450 x 300	545 x 390	250	-
MC3/R	450 x 450	550 x 550	250	-
MC4/R	600 x 450	690 x 545	250	-
MC5/R	600 x 600	680 x 680	250	-

DATUM™ Benefits

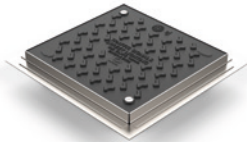
- Easy one way fit and installation.
- Lightweight system conforms to HSE recommendations.
- Single wall design.
- Duct entry points easily cut with holesaw.
- Manufactured from a 100% recycled material.
- Composite covers & frames designed to suit.

DATUM™ Features

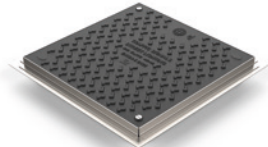
- Single Wall
- Non-structural
- High Strength & Rigidity
- Duct Entry Cut-outs
- B 125 Applications when encased in concrete

COMPOSITE COVERS
Anti-Slip Covers & Frames

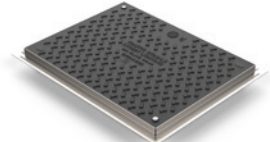
EN124-5:2015
Fully certified



IDS ELITE 3030B



IDS ELITE 4545B



IDS ELITE 4560B

IDS® ELITE Composite Covers

Standard Sizes

Product	Code	Nominal Size (mm)	Description	Covers	Weight (Kg)
IDS ELITE 3030B	CSF3030EN	300 x 300	B 125 Cover & Galvanised Steel Frame	1	6
IDS ELITE 3045B	CSF3045EN	300 x 450	B 125 Cover & Galvanised Steel Frame	1	9
IDS ELITE 4545B	CSF4545EN	450 x 450	B 125 Cover & Galvanised Steel Frame	1	11
IDS ELITE 4560B	CSF4560EN	450 x 600	B 125 Cover & Galvanised Steel Frame	1	13
IDS ELITE 6060B	CSF6060EN	600 x 600	B 125 Cover & Galvanised Steel Frame	1	16
IDS ELITE 9045B	CSF9045EN	900 x 450	B 125 Cover & Galvanised Steel Frame	2	45
IDS ELITE 9060B	CSF9060EN	900 x 600	B 125 Cover & Galvanised Steel Frame	2	53
IDS ELITE 9090B	CSF9090EN	900 x 900	B 125 Cover & Galvanised Steel Frame	4	78
IDS ELITE 12060B	CSF12060EN	1200 x 600	B 125 Cover & Galvanised Steel Frame	2	62
IDS ELITE 12090B	CSF12090EN	1200 x 900	B 125 Cover & Galvanised Steel Frame	4	93

Compatible with NEXUS and DATUM



Protective UV surface layer



Closed keyways



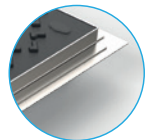
4L® Raised Anti-Slip Pattern



Stainless Steel locking



NSAI EN 124-5 certification



Galvanised Steel Frames



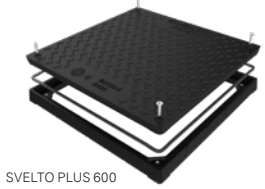
SVELTO & SVELTO PLUS

Anti-Slip Covers & Frames

EN124-5:2015
Fully certified



SVELTO 300



SVELTO PLUS 600

SVELTO Composite Covers & Iron Frames

Standard Sizes

Product	Clear Opening (mm)	Overall (mm)	Class	Frame Height (mm)	Weight (Kg)
SVELTO 300	200 x 200	300 x 300	B125	30	5
SVELTO 400	300 x 300	400 x 400	B125	30	8
SVELTO 500	400 x 400	500 x 500	B125	30	11
SVELTO 600	500 x 500	600 x 600	B125	31	15
SVELTO 700	600 x 600	700 x 700	B125	31	19

SVELTO Features

- Cover and frame is EN 124:2015 compliant
- Light weight, easy to handle and install, up to 70% lighter than the iron equivalent
- Ductile iron frame with a single seal groove for odour resistance
- Corrosion resistant even in the most aggressive environments
- Non-conductive of stray voltage or heat
- Coarse skid resistant upper surface featuring the trademarked 4L non-slip pattern

SVELTO PLUS Composite Covers & Frames

Standard Sizes

Product	Clear Opening (mm)	Overall (mm)	Class	Frame Height (mm)	Weight (Kg)
SVELTO PLUS 400	300 x 300	400 x 400	B125	44	6
SVELTO PLUS 500	400 x 400	500 x 500	B125	44	8
SVELTO PLUS 600	500 x 500	600 x 600	B125	44	12
SVELTO PLUS 700	600 x 600	700 x 700	B125	44	15

SVELTO PLUS Features

- Cover and frame is EN 124:2015 compliant
- Light weight, easy to handle and install, up to 70% lighter than the iron equivalent
- Composite frame with a single seal groove for odour resistance
- EPDM seal fixed to the frame for water and odour seal
- Locking by four stainless steel M8 bolts
- Coarse skid resistant upper surface featuring the trademarked 4L non-slip pattern

SWITCH™
Pole Retention System



SWITCH™



SWITCH™ Top



SWITCH™ Duck Foot Bend

SWITCH™ Pole Retention

Standard Sizes

EJ Code	O/all Height (mm)	Pole Planting Depth (mm)	Pole Diameter (mm)	Weight (kg)
SW115 450	450	335	115	38
SW115 600	600	485	115	39
SW115 750	750	635	115	40
SW115 900	900	785	115	42

SWITCH™ is a unique patented pole retention system which comprises of a high quality casting process and is engineered to securely retain in position all types of passive and non-passive street furniture and posts. The system offers a top housing unit comprising of an integrated levelling system, storage for pavement plug, and Total Grip & Release clamping system. The Switch range has been extensively tested at a UKAS accredited test facility. The flexibility of the Switch range allows for variable heights with minor adjustments available to meet site requirements.



Crash Test

Independent testing was carried out at a UKAS accredited test facility. Two SWITCH™ sockets were installed in the ground and a traffic signal post was inserted into each socket, 2 tests were then carried out where the posts were impacted by a car travelling at 100km/h and at 35km/h. The damaged posts were retained by the socket and were then removed in under 2 minutes with basic tools.



ej

ejco.com



Nuneaton

tel +44 (0) 24 7664 1777

fax +44 (0) 24 7637 5250

uk.sales@ejco.com

Nuneaton

Liberty House

Liberty Way - Nuneaton

CV11 6RZ - UK

Product Guide

Access Cover & Gully Grating

EJ © - 2023