



ej

# INTEGRITY™ KD100

## Technical Sheet

600x600mm



### Material

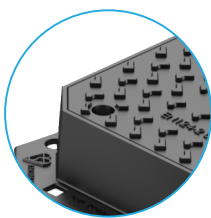
EN GJS 500-7 Iron  
ISO 1083 / EN1563

**INTEGRITY™** by EJ, a new access cover and frame range: completely re-imagined, and re-engineered. The range not only fully meets the requirements of BS EN 124-2:2015 but also incorporates significant and unique design advantages over competing products. INTEGRITY™ is a fully featured product, designed for lower traffic intensity applications. Paramount of these features is the chamfered and asymmetric Z-profile design, which triangulates and offsets the position of the covers within the frame, improving strength, reducing lateral movement/wear and reducing the cover weight for better manual handling. The product also features a 4L® top plate design, which gives excellent anti-slip characteristics, with a class-leading PSRV. BS keyways also come as standard on the INTEGRITY™ access cover range.

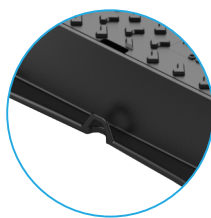
Code	Clear Opening (mm)	O/all Frame (mm)	Frame Depth (mm)	EN 124	Description	PSRV
KD100	600 x 600	720 x 720	100	D 400	Ductile Iron, D. Tri Lids Cover & Frame.	78
KD100-6	600 x 600	720 x 720	150	D 400	Ductile Iron, D. Tri Lids Cover & Frame.	78

### Features

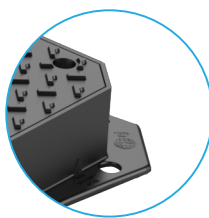
- EN 124-2:2015 Load Class D400
- BSI Kitemarked
- 4L® Raised Anti-Slip Pattern
- 3-Point Suspension - Non-Rock, Silent and Stable
- BS Keyways For Safe Operation
- Locking Available (Retro Drill & Tap Frame)
- Minimum Mortar Line Indicator
- AMP™ Patented Anti-Movement Technology
- Chamfered Corners For Increased Frame Strength
- Frame Lifting Points
- Reinforced Seating Shelf
- Large Surface Contact Area Between Cover & Frame



Blanked Locking point



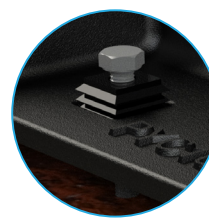
Frame Lifting Points



Chamfered Corners



Minimum Mortar Line Indicator



Frame Levelling Bolt Holes



BS Keyways For Safe Operation