



Titan Kerb, Natural, Basildon

Titan Kerb High Containment System

Type	Profile	Height (mm)	Face Length (mm)	Width (mm)	Weight (kg)	Item Code
Straight	Titan	400	1000	390	240	<b>RK9500000</b>
Straight (Compact Kerb)	Titan	360	1000	390	200	
Straight	Titan	400	665	390	160	RK9500010
Straight	Titan	400	495	390	119	RK9500020
Straight	Titan	400	325	390	78	RK9500030
Large Transition Left Hand	Titan to Half Battered*	400/310	1000	390/264	210	<b>RK9507000</b>
Small Transition Left Hand	Titan to Half Battered*	310/220	1000	264/137	130	<b>RK9507020</b>
Large Transition Right Hand	Titan to Half Battered*	400/310	1000	390/264	210	<b>RK9507010</b>
Small Transition Right Hand	Titan to Half Battered*	310/220	1000	264/137	130	<b>RK9507030</b>

\*When Titan is used in combination with bullnose or 45 splay kerbs, a conventional transition kerb unity will be required

Titan Quadrants

Type	Profile	Degrees Covered	Weight (kg)	Item Code
Quadrants*	Titan	90°	104	<b>RK9507400</b>
Quadrants*	Titan	45°	76	RK9507500
Internal Angle Left Hand**	Titan	90°	205	RK9508000
Internal Angle Right Hand**	Titan	90°	205	RK9508010

\*Each Quadrant has 100mm straight extensions at both ends to increase stability and reduce risk on site  
 \*\*Internal angles are supplied in two parts, the left hand and the right hand, with opposite splayed ends

Titan Radius

Type	Profile	Height (mm)	Face Length (mm)	Width (mm)	Radius Covered (Meters)	No, per ¼ Circle	Weight (kg)	Item Code
External								
Ext. Radius	Titan	400	965/975	390	76/25	122-40*	233	RK9502600
Ext. Radius	Titan	400	955/975	390	25/15	40-24*	232	RK9502500
Ext. Radius	Titan	400	945/975	390	15/11	24-18*	230	RK9501500
Ext. Radius	Titan	400	935/975	390	11/8.5	18-14*	229	RK9501100
Ext. Radius	Titan	400	797/841	390	7.5	14*	207	RK9500750
Ext. Radius	Titan	400	734/785	390	6.0	12*	194	RK9500600
Ext. Radius	Titan	400	807/884	390	4.5	8*	221	RK9500450
Ext. Radius	Titan	400	317/394	390	2.0	8*	104	RK9500200
Ext. Radius	Titan	400	217/294	390	1.5	8*	80	RK9500150
Internal								
Int. Radius	Titan	400	975/955	390	25/15	40-24*	232	RK9505500
Int. Radius	Titan	400	975/935	390	11/8.5	18-14*	229	RK9504100
Int. Radius	Titan	400	836/785	390	6.0	12*	182	RK9503600
Int. Radius	Titan	400	961/884	390	4.5	8*	198	RK9503450
Internal	Titan	400	589/666	390	3.0	6.0	132	RK9503300

Titan with reference numbers indicated in **bold** are available ex-stock

\* Indicates the number of radius units needed (per quarter circle) to cover the intended area

† Natural products are manufactured from aggregates sourced locally to the works and contain no pigmentation, therefore colour variation between products from different works is possible.



Natural†

# Titan Kerb

High Containment Concrete Kerb System



Titan Kerb

This specialist containment kerb system has been designed not only to provide clear visual delineation between trafficked and non-trafficked areas – its unusual design also redirects errant traffic to its intended path. This passive traffic control system provides an essential tool for designers and engineers who need to protect vulnerable street installations such as pedestrian refuges.

**N55Plus**  
Q10 115



For the latest carbon value visit  
[www.marshalls.co.uk/commercial/carbon-calculator](http://www.marshalls.co.uk/commercial/carbon-calculator)

Type	Profile	Height (mm)	Face Length (mm)	Width (mm)	Weight (kg)	Item Code
Straight	Half Battered 1	305	914	150	97	<b>RK0100000</b>
Straight*	Half Battered 2	255	914	125	69	<b>RK0300000</b>
Straight	Half Battered 3	150	914	125	42	<b>RK0500000</b>
Drop Kerb - Left Hand	Half Battered 1:12 Gradient	255/178	914	125	59	<b>RK4330010</b>
Drop Kerb - Right Hand	Half Battered 1:12 Gradient	255/178	914	125	59	<b>RK4330020</b>
Centre Stone	Half Battered	178	914	125	49	<b>RK4340000</b>
Drop Kerb - Left Hand	Half Battered 1:9 Gradient **	255/150	914	125	59	<b>RK4300010</b>
Drop Kerb - Right Hand	Half Battered 1:9 Gradient **	255/150	914	125	59	<b>RK4300020</b>
Transition - Left Hand	Half Battered to Bullnosed	255	914	125	69	<b>RK5050010</b>
Transition - Right Hand	Bullnosed to Half Battered	255	914	125	69	<b>RK5050020</b>
Transition - Left Hand	Half Battered to 45 Splayed	255	914	125	69	<b>RK5070010</b>
Transition - Right Hand	45 Splay to Half Battered	255	914	125	69	<b>RK5070020</b>
Side Offlet 1.27mm Diameter Outlet ***	Half Battered	255	914	125	62	<b>RK5300000</b>
Double Drop - Left Hand	Half Battered 1.24 Gradient	255/178	914	125	54	<b>RK4320010</b>
Double Drop - Right Hand	Half Battered 1.24 Gradient	255/178	914	125	54	<b>RK4320020</b>
Double Drop - Left Hand	Half Battered 1.24 Gradient	255/178	914	125	63	<b>RK4320030</b>
Double Drop - Right Hand	Half Battered 1.24 Gradient	255/178	914	125	63	<b>RK4320040</b>
Angle - External	Half Battered	255	305	125	36	<b>RK5100000</b>
Angle - Internal	Half Battered	255	305	125	36	<b>RK5100100</b>
Quadrant	Half Battered	255	n/a	305	43	<b>RK4720000</b>
Quadrant	Half Battered	255	n/a	455	99	<b>RK4710000</b>

\* Also available in 600mm lengths

\*\* Use 125 x 150 Bullnosed as centre stone

\*\*\* For use with 125x255 Half Battered Kerb

## Standard Radius Kerb - Half Battered

Type	Profile	Height (mm)	Face Length (mm)	Width (mm)	Radius* (m)	No. per 1/4 Circle**	Weight (kg)	Item Code		
<b>External Radius</b>	Half Battered 1	305	780	150	6	12	84.9	RK0105600		
		305	780	150	8	16	84.9	RK0105800		
		305	780	150	10	20	84.9	RK0106000		
<b>External Radius</b>	Half Battered 2	255	780	125	0.6	1	62	<b>RK0305060</b>		
		255	780	125	1	2	62	<b>RK0305100</b>		
		255	780	125	2	4	62	<b>RK0305200</b>		
		255	780	125	3	6	62	<b>RK0305300</b>		
		255	780	125	4	8	62	<b>RK0305400</b>		
		255	780	125	5	10	62	<b>RK0305500</b>		
		255	780	125	6	12	62	<b>RK0305600</b>		
		255	780	125	8	16	62	<b>RK0305800</b>		
		255	780	125	10	20	62	<b>RK0306000</b>		
		<b>External Radius</b>	Half Battered 3	150	780	125	3	6	34	<b>RK0306200</b>
				150	780	125	4	8	34	RK0505400
				150	780	125	8	12	34	RK0505600
150	780			125	10	16	34	RK0505800		
150	780			125	12	20	34	RK0506000		
<b>Internal Radius</b>	Half Battered 2			255	780	125	1	2	62	<b>RK0307100</b>
		255	780	125	3	6	62	<b>RK0307300</b>		
		255	780	125	4	8	62	<b>RK0307400</b>		
		255	780	125	5	10	62	<b>RK0307500</b>		
		255	780	125	6	12	62	<b>RK0307600</b>		
		255	780	125	8	16	62	<b>RK0307800</b>		
		255	780	125	10	20	62	<b>RK0308000</b>		
		255	780	125	12	24	62	<b>RK0308200</b>		
		<b>External Radius</b>	Half Battered and Bullnosed Left Hand	255/150	780	125	4	8	52.5	<b>RK4307400</b>
				255/150	780	125	6	12	52.5	<b>RK4307600</b>
				255/150	780	125	8	16	52.5	<b>RK4307800</b>
		<b>Drop Kerb</b>	Half Battered and Bullnosed Right Hand	255/150	780	125	4	8	52.5	<b>RK4305400</b>
255/150	780			125	6	12	52.5	<b>RK4305600</b>		
255/150	780			125	8	16	52.5	<b>RK4305800</b>		
Drop Kerb - Left Hand	Half Battered and Bullnosed	305/200	914	150			RK410001			
Drop Kerb - Right Hand	Half Battered and Bullnosed	305/200	914	150			RK410002			

\* For a Radius greater than 12m straights should be utilised

\*\*1/4 circles can be constructed without any cutting required, this applies when using units with a face length of 780mm. For all other face lengths cutting will be required.

## Standard Kerb - Bullnosed

Type	Profile	Height (mm)	Face Length (mm)	Width (mm)	Weight (kg)	Item Code
Straight	Bullnosed	305	914	150	100	<b>RK0150000</b>
Straight*	Bullnosed	255	914	125	70	<b>RK0350000</b>
Straight	Bullnosed	150	914	125	42	<b>RK0550000</b>
Drop Kerb - Left Hand	Bullnosed	255/150	914	125	59	<b>RK4350010</b>
Drop Kerb - Right Hand	Bullnosed	255/150	914	125	59	<b>RK4350020</b>
Centre Stone	Bullnosed	150	914	125	42	<b>RK0550000</b>
Transition - Left Hand	Half Battered to Bullnosed	255	914	125	69	<b>RK5050010</b>
Transition - Right Hand	Bullnosed to Half Battered	255	914	125	69	<b>RK5050020</b>
Angle - External	Bullnosed	255	305	125	37	<b>RK5150000</b>
Angle - Internal	Bullnosed	255	305	125	37	<b>RK5150100</b>
Quadrant	Bullnosed	255		305	45	<b>RK4820000</b>
Quadrant	Bullnosed	255		455	99	<b>RK4810000</b>

\* Also available in 600mm lengths

## Standard Radius Kerb - Bullnosed

Type	Profile	Height (mm)	Face Length (mm)	Width (mm)	Radius* (m)	No. per 1/4 Circle **	Weight (kg)	Item Code		
<b>External Radius</b>	Bullnosed	255	780	125	1	2.0	64.0	RK0355100		
		255	780	125	2	4.0	64.0	RK0355200		
		255	780	125	3	6.0	64.0	RK0355300		
		255	780	125	4	8.1	64.0	RK0355400		
		255	780	125	5	10.1	64.0	RK0355500		
		255	780	125	6	12.1	64.0	RK0355600		
		255	780	125	8	16.1	64.0	<b>RK0355800</b>		
		255	780	125	10	20.1	64.0	<b>RK0356000</b>		
		255	780	125	12	24.2	64.0	<b>RK0356200</b>		
		<b>External Radius</b>	Bullnosed	150	780	125	2	4.0	35.5	<b>RK0555200</b>
				150	780	125	3	6.0	35.5	<b>RK0555300</b>
				150	780	125	4	8.1	35.5	<b>RK0555400</b>
150	780			125	5	10.1	35.5	<b>RK0555500</b>		
150	780			125	6	12.1	35.5	<b>RK0555600</b>		
150	780			125	8	16.1	35.5	<b>RK0555800</b>		
150	780			125	10	20.1	35.5	<b>RK0556000</b>		
<b>Internal Radius</b>	Bullnosed			255	780	125	6	12.3	57	<b>RK0357600</b>
				255	780	125	10	20.4	57	<b>RK0358000</b>
				150	780	125	3	6.3	42	<b>RK0557300</b>
		150	780	125	4	8.3	42	<b>RK0557400</b>		
		150	780	125	5	10.3	42	<b>RK0557500</b>		
		150	780	125	6	12.3	42	<b>RK0557600</b>		
150	780	125	8	16.4	42	<b>RK0557800</b>				
150	780	125	10	20.4	42	<b>RK0558000</b>				

\* For a Radius greater than 12m straights should be utilised.

\*\*1/4 circles can be constructed without any cutting required, this applies when using units with a face length of 780mm. For all other face lengths cutting will be required.

## Standard Kerb - 45 splayed

Type	Profile	Height (mm)	Face Length (mm)	Width (mm)	Weight (kg)	Item Code
Straight *	45 Splayed	255	914	125	64	<b>RK0400000</b>
Straight*	45 Splayed	150	914	125	36	<b>RK0600000</b>
Drop Kerb - Left Hand	45 splayed	255/150	914	125	52	<b>RK4400010</b>
Drop Kerb - Right Hand	45 splayed	255/150	914	125	52	<b>RK4400020</b>
Centre Stone	n/a	150	914	125	42	<b>RK0550000</b>
Transition - Left Hand	Half Battered to 45 Splayed	255	914	125	69	<b>RK5070510</b>
Transition - Right Hand	45 Splayed to Half Battered	255	914	125	69	<b>RK5070520</b>
Angle - External	45 Splayed	255	305	125	36	<b>RK5200000</b>
Angle - Internal	45 Splayed	255	305	125	36	<b>RK5200100</b>
Quadrant	Splayed	255	n/a	455	101	RK4910000
Quadrant	Splayed	255	n/a	305	41	RK4920000

\* Also available in 600mm lengths

\*\* For use with 125x255 Splayed

## Standard Radius Kerb 45 splay

Type	Profile	Height (mm)	Length (mm)	Width (mm)	Radius*	No. per 1/4 Circle **	Weight (kg)	Item Code
<b>External Radius</b>	45 Splayed	255	780	125	1	2	53	<b>RK0405100</b>
		255	780	125	2	4	53	RK0405200
		255	780	125	3	6	53	RK0405300
		255	780	125	4	8	53	RK0405400
		255	780	125	6	12	53	RK0405600
		255	780	125	8	16	53	RK0405800
		255	780	125	10	20	53	RK0406000
		255	780	125	12	21	62.5	RK0406200

\* For a Radius greater than 12m straights should be utilised.

\*\*1/4 circles can be constructed without any cutting required, this applies when using units with a face length of 780mm. For all other face lengths cutting will be required.

Kerbs with reference numbers indicated in **bold** black are available ex stock.

Kerbs with reference numbers indicated in light black are manufactured to order upon request.

†Natural products are manufactured from aggregates sourced locally to the works and contain no pigmentation, therefore colour variation between products from different works is possible.

Keyedge

Profile Edge	Height (mm)	Face Length (mm)	Width (mm)	Weight (Kg)	Buff Item Code	Charcoal Item Code	Bracken Item Code	Brindle Item Code
Chamfered	50	800	150	12.64	ED5530750	ED5530500	ED5532250	ED5531750

\*All product items are available ex-stock



Keyedge Charcoal



Charcoal



Buff



Brindle



Bracken

# Keyedge

Coloured Edging Specifically Designed for the Housebuilder.

Coloured edging is perfect to create an attractive finishing landscaping touch. Keyedge can be used alongside a range of other Marshall's products including the most popular Keyblok paving and the 'New' Key pave flag which is an ideal landscape solution for a wide variety of housing schemes.

- Standard smooth surface finish
- Chamfered profile
- Four colour options to complement and contrast with other Marshall's products
- Product size: (H)150x(L)800x(W)50mm

**See my related products...**

- Key pave flag Paving* ..... pg 75A
- Keyblok Paving* ..... pg 41
- Keykerb Kerb* ..... pg 112

**n55Plus**  
Q10 10 Q10 112  
Q10 110



CO<sub>2</sub> per m<sup>2</sup>

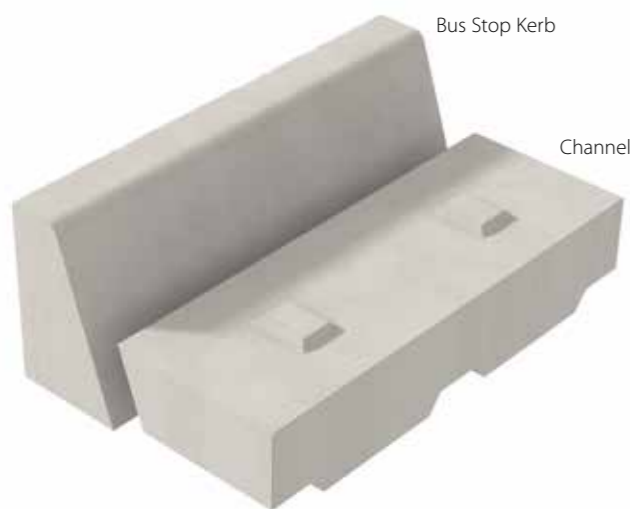
For the latest carbon value visit



Keyedge, Charcoal

Type	Height (mm)	Face Length (mm)	Width (mm)	No. Required	Weight (kg)	Item Code
Kerb	380	1000	100/240		145	<b>RK940010</b>
Channel	180	1000	350/385		120	RK940020
Kerb Radius Unit	380	250	240	8	145	
200 Drop Kerb Left Hand	380	1000	245	8	110	RK942030
200 Drop Kerb Right Hand	380	1000	245	12	110	RK942031
180 Drop Kerb Left Hand	360	734	228	14	100	RK942040
180 Drop Kerb Right Hand	360	734	228	18-14	100	RK942041
160 Drop Kerb Left Hand	340	472	125	24-18	90	RK942050
160 Drop Kerb Right Hand	340	472	125	40-24	90	RK942051

Bus Stop Kerb with reference numbers indicated in **bold** are available ex-stock  
 Bus Stop Kerb with reference numbers indicated in light black are manufactured to order. Contact our sales office to discuss your requirements  
 \*Natural products are manufactured from aggregates sourced locally to the works and contain no pigmentation, therefore colour variation between products from different works is possible.



# Bus Stop Kerb

Variable Height Concrete Bus Stop Kerb System



This two piece system has been designed to provide pedestrians with safe and easy access to buses and similar transportation of varying heights. The smooth, angle faced kerb can be installed at a variety of heights to coincide with the lowest steps of local buses, while the optional rumble channel allows bus drivers to position the vehicle as close to the kerb as possible.

**n55Plus**  
 Q10 10  
 Q10 110  
 CO<sub>2</sub> per m<sup>2</sup>

For the latest carbon value visit  
[www.marshalls.co.uk/commercial/carbon-calculator](http://www.marshalls.co.uk/commercial/carbon-calculator)



Bus Stop Kerb, Derby

Type	Profile	Height (mm)	Face Length (mm)	Width (mm)	Weight (kg)	Item Code
Channel	Square	100	914	150	33	RK325000
Channel	Square	125	914	255	70	<b>RK3050000</b>
Channel	Square	150	914	150	51	<b>RK3150000</b>
Channel	Square	125	914	150	43	<b>RK3200000</b>
Channel	Bullnosed	150	914	305	102	<b>RK0150000</b>
Channel	Bullnosed	125	914	255	70	<b>RK0350000</b>
Channel	Bullnosed	150	914	440	110	RK3500000
Channel	Dished	150	914	305	81	<b>RK3550000</b>
Channel	Dished	90	914	305	52	<b>RK3620000</b>
Channel	Dished	125	914	255	62	<b>RK3600000</b>
Channel	Dished	75	914	230	33	<b>RK3640000</b>
Channel	Dished	100	914	150	34	<b>RK3660000</b>
Channel	Grooved	100	914	150	35	<b>RK3680000</b>
Channel	Grooved	75	914	255	40	<b>RK3720000</b>
Edging	Flat Top	150	914	50	15	<b>ED500015</b>
Edging	Flat Top	200	914	50	19	<b>ED500025</b>
Edging	Flat Top	250	914	50	25	<b>ED500035</b>
Edging	Bullnosed	150	914	50	16	<b>ED510015</b>
Edging	Bullnosed	200	914	50	20	<b>ED510025</b>
Edging	Bullnosed	250	914	50	27	<b>ED510035</b>
Edging	Round Top	200	914	50	19	<b>ED520030</b>
Edging	Flat Top	200	914	75	34	<b>ED500125</b>
Edging	Round Top	150	914	50	15	<b>ED520015</b>
Edging	Round Top	200	914	50	20	<b>ED520025</b>
Edging	Round Top	250	914	50	25	ED520035
Edging	Round Top	230	914	75	39	<b>ED520350</b>

Channels & edging with reference numbers indicated in **bold** black are available ex-stock.  
 \*Natural products are manufactured from aggregates sourced locally to the works and contain no pigmentation, therefore colour variation between products from different works is possible.

Channels



Edgings



\*\* mostly used along footpath edges, \*\*\* mostly used as an aid to drainage, †used as a spacer between the kerb and the carriageway or used as off road parking and lay-bys



# Channels & Edgings

BS Standard Concrete Kerb

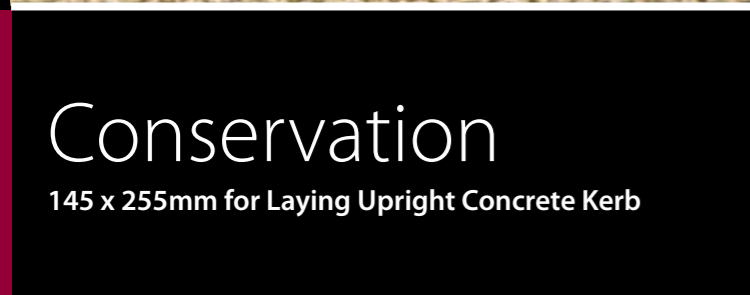


A highly durable precision-manufactured selection of channel and edging units used for a wide variety of landscaping purposes. These hydraulically pressed products are available in many different shapes and profiles to fulfil a wide range of design requirements.

Description	Size No. per 1/4 Circle Except Droppers	Radius	Size						Weight (kg)
			3	4	5	6	8	10	
Channel	Square	CS1	RK3070300	RK3070400	RK3070600	RK3070600	RK3070800	RK3071000	64.0



Type	Profile	Height (mm)	Face Length (mm)	Width (mm)	Radius (m)	No. per 1/4 Circle**	Weight (kg)	Silver Grey Item Code	Harvest Buff Item Code	Charcoal Item Code
Straights	Wider/Square	255	915	145	n/a	n/a	83	<b>RK6500000</b>	<b>RK6609500</b>	<b>RK6650000</b>
Straights	Wider/Square	255	600	145	n/a	n/a	55	RK6500010		
Straights	Wider/Square	255	450	145	n/a	n/a	41	RK6500020	Please call	
Straights	Wider/Square	255	300	145	n/a	n/a	27	RK6500030	Please call	Please call
External Radius	Wider/Square	255	780	145	2	4	83	<b>RK6505200</b>	RK6605200	RK6555200
External Radius	Wider/Square	255	780	145	3	6	83	<b>RK6505300</b>	RK6605300	RK6555300
External Radius	Wider/Square	255	780	145	4	8	83	<b>RK6505400</b>	RK6605400	RK6555400
External Radius	Wider/Square	255	780	145	6	12	83	<b>RK6505600</b>	RK6605600	RK6555600
External Radius	Wider/Square	255	780	145	8	16	83	<b>RK6505800</b>	RK6605800	RK6555800
External Radius	Wider/Square	255	780	145	10	20	83	<b>RK6506000</b>	RK6606000	RK6556000
Internal Radius	Wider/Square	255	729	145	1.85	4	83	RK6507200		
Internal Radius	Wider/Square	255	748	145	2.85	6	83	RK6507300		
Internal Radius	Wider/Square	255	757	145	3.85	8	83	RK6507400		
Internal Radius	Wider/Square	255	767	145	5.85	12	83	RK6507600		
Internal Radius	Wider/Square	255	771	145	7.85	16	83	RK6507800		
Internal Radius	Wider/Square	255	774	145	9.85	20	83	RK6508000		
Drop Kerb Left Hand	Wider/Square	255/145	915	145	n/a	n/a	68	<b>RK8000010</b>	RK8110010	RK8300010
Drop Kerb Right Hand	Wider/Square	255/145	915	145	n/a	n/a	68	<b>RK8000020</b>	RK8110020	RK8300020
Centre Stone	Wider/Square	145	915	145	n/a	n/a	51	<b>RK8010000</b>	RK8110030	RK8310000
Quadrant	Wider/Square	255	n/a	305	n/a	n/a	42	<b>RK8075400</b>	RK8150500	RK8075700
Conservation Kerb	Wider/Square	145	915	255	n/a	n/a	83	<b>RK6500000</b>	<b>RK6609500</b>	<b>RK6650000</b>
Edging	Wider/Square	150	915	63	n/a	n/a	19.5	<b>ED6405650</b>	ED500060	ED6406650
Step Tread - 1 Strip	Wider/Square	145	915	255	n/a	n/a	83	<b>RK9360100</b>		
Step Tread - 2 Strip	Wider/Square	145	915	255	n/a	n/a	83	<b>RK9360200</b>		
Internal Angle	Wider/Square	255	305	145	n/a	n/a	46	<b>RK8150560</b>	RK8075760	RK8075460
External Angle	Wider/Square	255	305	145	n/a	n/a	46	<b>RK8150550</b>	RK8075750	RK8075450
External Radius	Wider/Square	255	780	145	1	2	83	RK650015		
Drop Kerb Left Hand	Wider/Square	255	915	145	n/a	n/a	68	RK800061		
Drop Kerb Right Hand	Wider/Square	255	915	145	n/a	n/a	68	RK800062		



# Conservation

145 x 255mm for Laying Upright Concrete Kerb

Offered in a wider/square contemporary profile. An aesthetically superior kerb system featuring a lightly textured surface and exposed granite aggregate to create a sophisticated, contemporary look. The 145x255 size, based on traditional pre-metric dimensions provides a wider, more squared off profile than the British Standard, creating a striking aesthetic in schemes where design-led flair is of paramount importance.

**NSPlus**  
Q10 10 Q10 150  
Q10 110 Q10 510  
Q10 112



CO<sub>2</sub> per m<sup>2</sup>

For the latest carbon value visit [www.marshalls.co.uk/commercial/carbon-calculator](http://www.marshalls.co.uk/commercial/carbon-calculator)



Conservation Kerb, Silver Grey, Clay Farm



Type	Profile	Height (mm)	Face Length (mm)	Width (mm)	Radius (m)	No. per 1/4 Circle	Weight (kg)	Silver Grey Item Code	Harvest Buff Item Code	Charcoal Item Code
Straights	Wider/Square	205	915	255	n/a	n/a	96	<b>RK7000000</b>	<b>RK7100000</b>	<b>RK7050000</b>
	Wider/Square	205	600	255	n/a	n/a	62	RK7000010		RK7050010
	Wider/Square	205	450	255	n/a	n/a	48	RK7000020	Please call	Please Call
External Radius	Wider/Square	205	300	255	n/a	n/a	32			Please Call
	Wider/Square	205	500	255	1.48	4.6	58	<b>RK7000100</b>	RK7100100	
	Wider/Square	205	785	255	2.98	6	92	<b>RK7000300</b>	RK7100300	RK7050300
Internal Radius	Wider/Square	205	780	255	6.2	12.5	96	<b>RK7000700</b>	RK7100700	RK7050700
	Wider/Square	205	780	255	11	22	97	RK7001000		
	Wider/Square	205	415	255	1.23	4.6	58	RK7002100	RK7102100	RK7052100
1:18 Gradient Drop Left Hand Part 1	Wider/Square	205/152	915	255	n/a	n/a	97	RK8050010	Please call	
	Wider/Square	152/100	915	255	n/a	n/a	69	RK8020010	Please call	RK8250210
	Wider/Square	205/152	915	255	n/a	n/a	97	RK8050020	Please call	
1:18 Gradient Drop Right Hand Part 1	Wider/Square	205/152	915	255	n/a	n/a	97	RK8050020	Please call	
	Wider/Square	152/100	915	255	n/a	n/a	69	RK8020020	Please call	RK8250220
	Wider/Square	205/100	915	255	n/a	n/a	83	<b>RK8040010</b>		
1:9 Gradient Drop Left Hand	Wider/Square	205/100	915	255	n/a	n/a	83	<b>RK8040020</b>		
	Wider/Square	205/130	455	255	n/a	n/a	52	RK8060010		
	Wider/Square	205/130	455	255	n/a	n/a	52	RK8060020		
Chamfered Drop Right Hand	Wider/Square	205/130	915	255	n/a	n/a	71	RK8070000		RK8253000
	Wider/Square	100	915	255	n/a	n/a	55	<b>RK8030000</b>		RK8700000
	Wider/Square	145	915	255	n/a	n/a	83	<b>RK6500000</b>	<b>RK6609500</b>	<b>RK6650000</b>
Quadrant	Wider/Square	255	305	305	n/a	n/a	42	<b>RK8075400</b>	RK8150500	RK8075700
	Wider/Square	150	915	63	n/a	n/a	17	<b>ED6405650</b>		ED6406650
	Wider/Square	255	915	205	n/a	n/a	98	<b>RK9363200</b>		

Conservation Kerb with reference numbers indicated in **bold** black are available ex-stock. Conservation Kerb with reference numbers indicated in light black are manufactured to order. Contact our Sales Office to discuss your requirements. **Can't find the size you're looking for, please contact our sales office for further details.**



Charcoal



Harvest Buff



Silver Grey

# Conservation

255 x 205mm Concrete Kerb

Offered in a wider/square contemporary profile. A simple way to marry prestigious, traditional looks with modern, precision manufactured convenience. This lightly textured kerb system, featuring exposed aggregate, is supplied in sizes which mirror traditional granite kerbstones.

Conservation Kerb, Silver Grey, Ocean Estate

**n55Plus**  
Q10 10 Q10 150  
Q10 110 Q10 510  
Q10 112



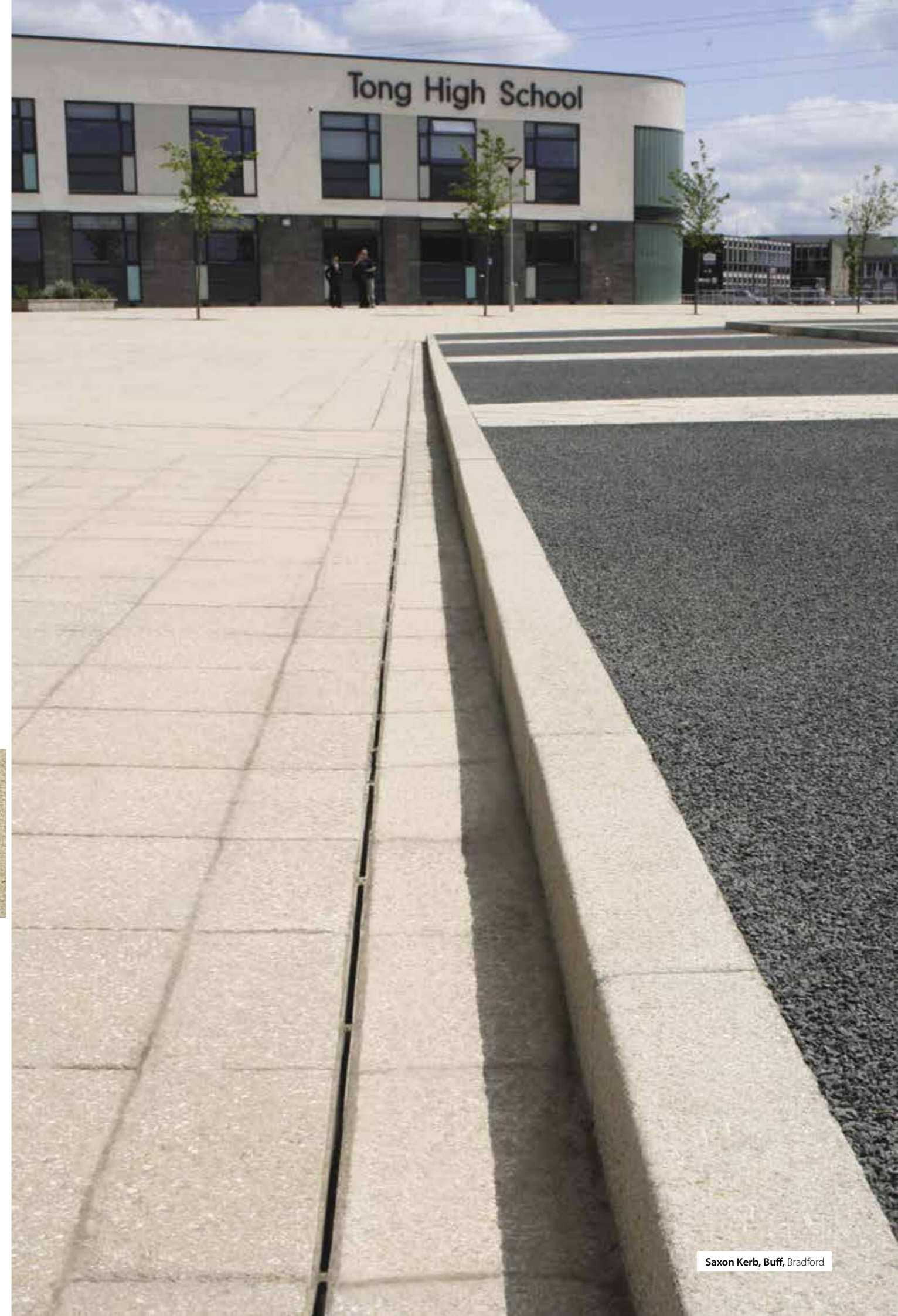
For the latest carbon value visit  
[www.marshalls.co.uk/commercial/carbon-calculator](http://www.marshalls.co.uk/commercial/carbon-calculator)

Type	Profile	Height (mm)	Face Length (mm)	Width (mm)	Radius (m)	No. per 1/4 Circle	Weight (kg)	Natural Item Code	Buff Item Code
Straights	Wider/Square	255	915	145	n/a	n/a	83	<b>RK6470000</b>	<b>RK6480000</b>
External Radius	Wider/Square	255	780	145	2	4	83	RK6475200	RK648520
	Wider/Square	255	780	145	4	8	83	RK647540	RK648540
	Wider/Square	255	780	145	6	12	83	RK6475600	RK6485600
Internal Radius	Wider/Square	255	780	145	10	20	83	RK6476000	RK648600
	Wider/Square	255	729	145	1.85	4	83	RK647720	
	Wider/Square	255	757	145	3.85	8	83	RK6477400	
	Wider/Square	255	767	145	5.85	12	83	RK647760	RK648760
Drop Left Hand	Wider/Square	255	915	145	n/a	n/a	68	RK6472010	RK648201
	Wider/Square	255	915	145	n/a	n/a	68	RK6472020	RK648202
Centre Stone	Wider/Square	145	915	145	n/a	n/a	51	RK6471000	RK6481000
Saxon Kerb Step	Wider/Square	145	915	255	n/a	n/a	83	<b>RK6470000</b>	
Quadrant	Wider/Square	255	305	305	n/a	n/a	42	RK6465000	RK646510
Internal Angle	Wider/Square	255	305	145	n/a	n/a	44	RK6461100	RK646150
External Angle	Wider/Square	255	305	145	n/a	n/a	44	RK6461000	RK6461400
Edgings	Wider/Square	150	915	63	n/a	n/a	17	ED6010500	ED6011000

Saxon Kerb with reference numbers indicated in **bold** black are available ex-stock.  
 Saxon Kerb with reference numbers indicated in light black are manufactured to order.

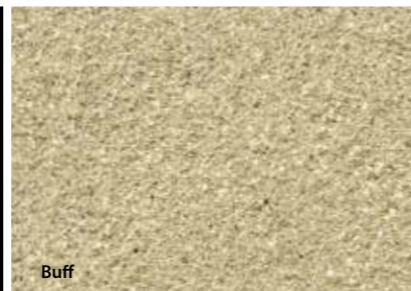
\*Natural products are manufactured from aggregates sourced locally to the works and contain no pigmentation, therefore colour variation between products from different works is possible.

Can't find the size you're looking for, please contact our sales office for further details.



# Saxon

145 x 255 Concrete Kerb



Buff



Natural\*

The Yorkstone aggregate in these kerb units is exposed via a gentle texturing process, creating a warm, rustic feel, ideal for use in traditional landscapes. The 145x255 sizes are based on pre-metric sizes, further reinforcing the traditional aesthetic.

**n55Plus**  
 Q10 10 Q10 150  
 Q10 110 Q10 510  
 Q10 112



CO<sub>2</sub> per m<sup>2</sup>

For the latest carbon value visit  
[www.marshalls.co.uk/commercial/carbon-calculator](http://www.marshalls.co.uk/commercial/carbon-calculator)