

**BREWER  
COWLS**

# Brewer Aerodyne Clamp model

## Fitting instructions

**IMPORTANT: THE AERODYNE IS FOR SOLID  
FUEL USE ONLY**

- Fits 150-240mm (6 - 9½ ") internal pot sizes
- Suitable for live or unused chimneys
- Stops downdraught fast
- Economical
- Other models available
- Available painted (terracotta, buff or black) or unpainted finish
- Simple, fast and secure fitting
- Can be fitted with an optional Birdguard mesh

## About the Brewer Aerodyne cowl

### Guaranteed

The Brewer Aerodyne cowl is guaranteed – satisfaction or your money back.

### Efficiency

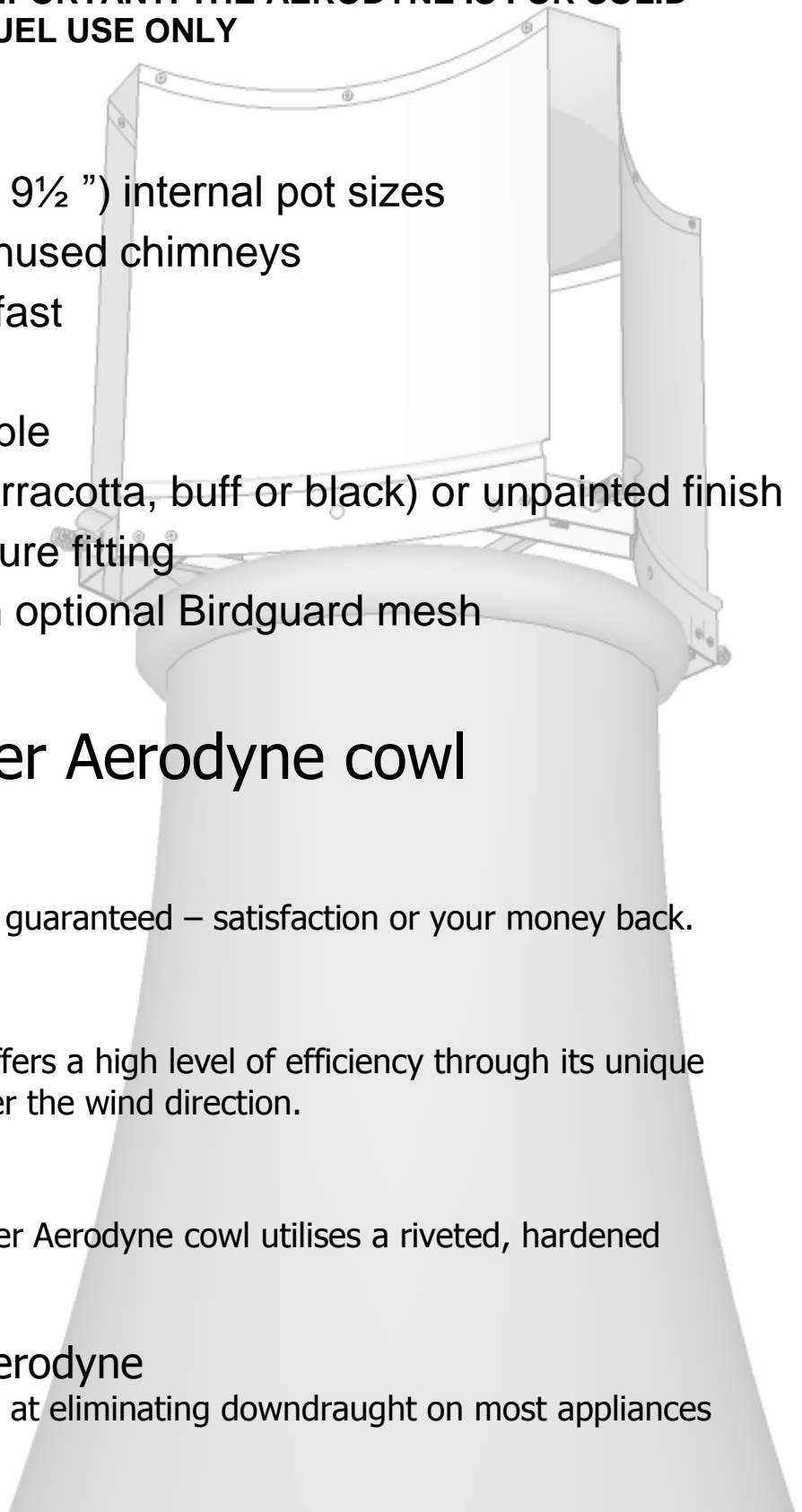
The Brewer Aerodyne cowl offers a high level of efficiency through its unique aerodynamic design, whatever the wind direction.

### Construction

The construction of the Brewer Aerodyne cowl utilises a riveted, hardened aluminium alloy.

### Benefits of a Brewer Aerodyne

Years of proven effectiveness at eliminating downdraught on most appliances burning solid fuel.



**IMPORTANT: THE AERODYNE IS FOR SOLID FUEL USE ONLY**

**Ensure you have the correct model of terminal to match your application.**

To fit the Aerodyne:

1. With the Aerodyne unpacked (Fig1), unscrew the wing nuts from the hook bolts.
2. Remove the hook bolts, rotate and refit them into the Aerodyne (Fig2).
3. Partly screw the wing nuts onto the hook bolts (Fig2).
4. Lower and centralise the Aerodyne onto the chimney (Figs 3&4)
5. Alternately tighten the wing nuts in equal amounts until the Aerodyne is securely fixed in place.

Fig1

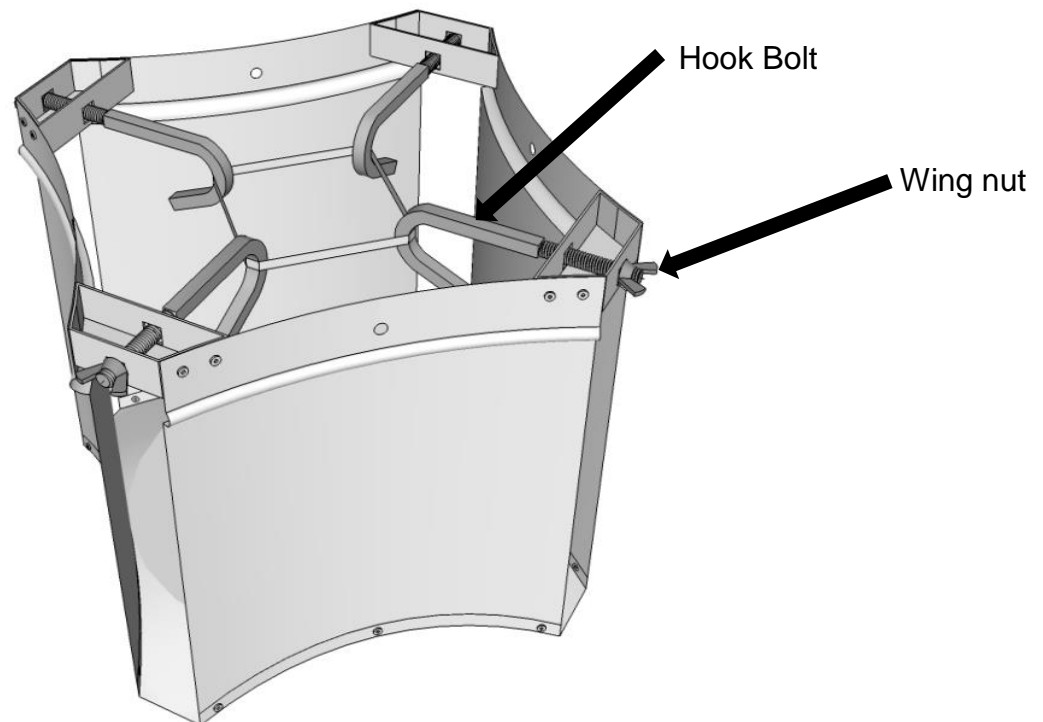


Fig2

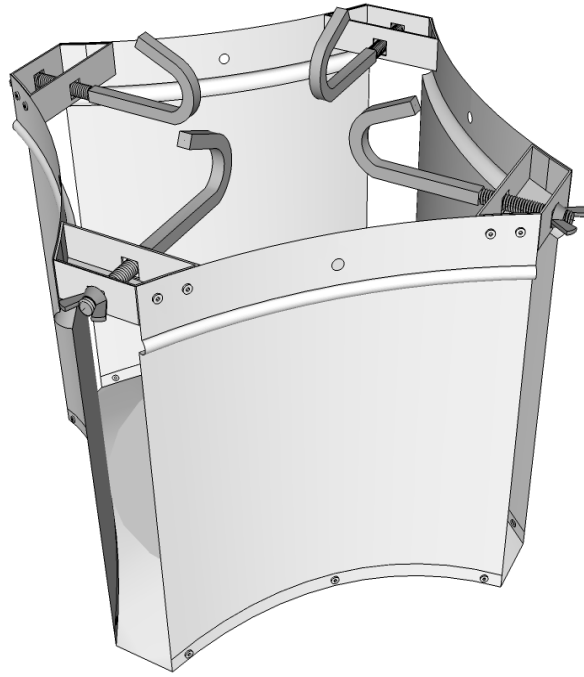


Fig3

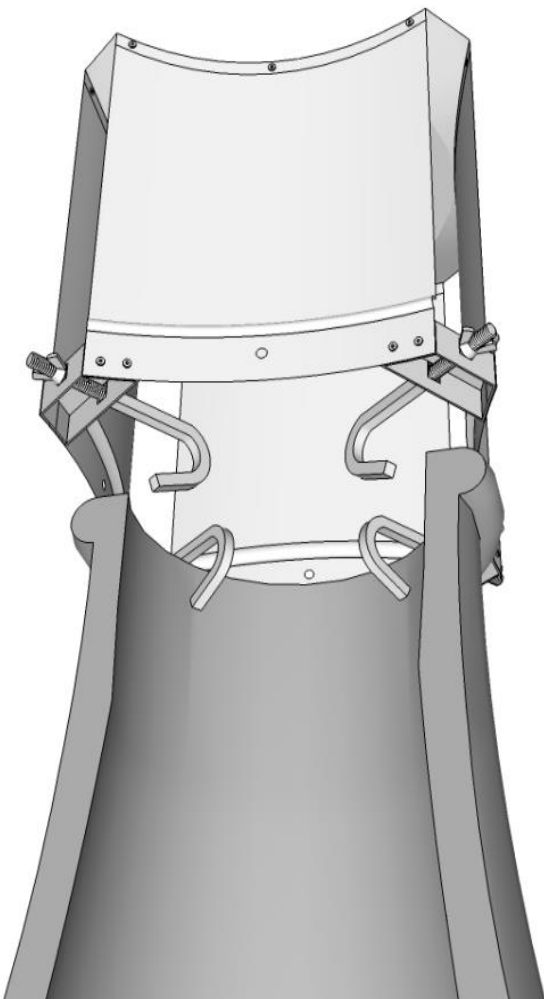
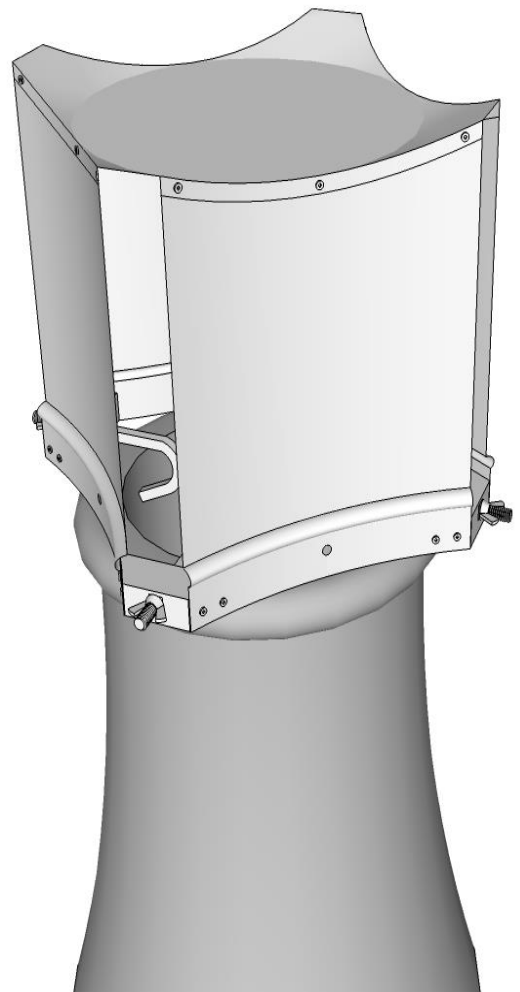


Fig4



# Declaration of conformity

Brewer Metalcraft Ltd Units C&D Ford Lane Industrial Estate Ford (Near Arundel) West Sussex BN18 0DF United Kingdom	
13	
1856-1:2009 Chimneys - Requirements for metal chimneys - Part 1: System chimney products	
Metal system chimney fitting - Terminal	
Essential Characteristic	Performance
Flow resistance Coefficient	$\zeta$ 0.016
Durability: Freeze thaw	Pass

## Technical Information

Model	Aerodyne
Fitting range (internal chimney diameter)	150-240mm
Coefficient of flow resistance	$\zeta$ 0.016