

Product Guide
Effective from 3rd January 2023

P23

ACO Building + Landscape

Domestic drainage and
landscaping systems





Lead Times and Delivery Charges	7
Channel Drainage	
ACO HexDrain®	8
ACO HexDrain® Garage Pack	9
ACO HexDrain® B 125	10
ACO HexDrain® Pro	11
ACO RainDrain®	12
ACO RainDrain® B 125	13
ACO Complete the Look Gratings	14
ACO CivicDrain®	16
Slot Drainage	
ACO HexDrain® Brickslot	17
ACO RainDrain® Brickslot B 125	18
Channel Lighting System	
ACO Eyeleds	19
Threshold Drainage	
ACO DoorWay Drain	21
ACO Threshold Drain	22
ACO StepDrain	24
ACO DrainMat	25
Matwells	
ACO InDoor	27
Landscaping Systems	
ACO GroundGuard	28
ACO GravelGuard	29
ACO BorderGuard	30
SuDS	
ACO SuDS Overflow Gullies	31
Domestic Soakaways	
ACO StormBrixx SD	32
Roof Drainage	
ACO RoofBloxx	33
ACO Rainwater Outlets	35
Domestic Stormwater Control	
ACO Junior	42
ACO Triplex	43
ACO Quatrix	44
Shower Drainage	
ACO ShowerDrain C Line	45
ACO Shower Gullies	47
Wildlife	
ACO Bat Box	49
ACO Nest Box	50
ACO Wildlife Refuges	51
Merchandising Options	52
Support Material	55
Conditions of Sale	56

Product selector

	LANDSCAPING	GARAGE THRESHOLD	DRIVEWAYS	CAR PARKING AREAS	ROOFS	SHOWERS	THRESHOLD DRAIN	BASEMENTS	LOAD CLASS	MATERIAL	HYDRAULIC CAPACITY	GRATING CHOICE
PRODUCTS												
ACO HEXDRAIN	✓	✓	-	-	-	-	-	-	A 15	Black	Medium	Wide
ACO HEXDRAIN GARAGE PACK	✓	✓	-	-	-	-	-	-	A 15	Black	Medium	Limited
ACO HEXDRAIN B 125	✓	-	✓	-	-	-	-	-	B 125	Black	Medium	Limited
ACO HEXDRAIN PRO	✓	-	✓	✓	-	-	-	-	C 250	Black	Medium	Limited
ACO RAINDRAIN	✓	✓	-	-	-	-	-	-	A 15	Yellow	Medium	Wide
ACO RAINDRAIN B125	✓	-	✓	-	-	-	-	-	B 125	Yellow	Medium	Limited
ACO CIVICDRAIN	✓	-	✓	✓	-	-	-	-	C 250	Yellow	Medium	Limited
ACO HEXDRAIN BRICKSLOT	✓	✓	-	-	-	-	✓	-	A 15	Black	Medium	Limited
ACO RAINDRAIN BRICKSLOT B 125	✓	-	✓	-	-	-	✓	-	B 125	Yellow/Black	Medium	Limited
ACO EYELED5	✓	-	✓	-	-	-	-	-	B 125	Black	Medium	Limited
ACO DOORWAY DRAIN	✓	-	-	-	-	-	✓	-	A 15	Black	Medium	Limited
ACO THRESHOLD DRAIN	✓	-	-	-	-	-	✓	-	A 15	Black	Medium	Limited
ACO STEPDRAIN	-	-	-	-	-	-	✓	-	N/A	Grey	Medium	Limited
ACO DRAINMAT	-	-	-	-	-	-	✓	-	N/A	Black/Yellow	N/A	Wide
ACO INDOOR	-	-	-	-	-	-	✓	✓	N/A	White	N/A	Small
ACO GROUNDGUARD	✓	-	✓	✓	-	-	-	-	N/A	Black	N/A	N/A
ACO GRAVELGUARD	✓	-	✓	-	-	-	-	-	N/A	Black	N/A	N/A
ACO BORDERGUARD	✓	-	-	-	-	-	-	-	N/A	Black	N/A	N/A
ACO SUDS OVERFLOW GULLIES	✓	-	-	-	-	-	-	-	N/A	Black	Medium	N/A
ACO STORMBRIX SD	✓	-	✓	✓	-	-	-	-	N/A	Black	Medium	N/A
ACO ROOFBLOXX	✓	-	✓	✓	✓	-	-	-	N/A	Black	N/A	N/A
ACO RAINWATER OUTLETS	-	-	-	-	✓	-	-	-	N/A	White	High	N/A
ACO JUNIOR	-	-	-	-	-	-	-	✓	N/A	Black	N/A	N/A
ACO TRIPLEX	-	-	-	-	-	-	-	✓	N/A	Black	N/A	N/A
ACO QUATRIX	-	-	-	-	-	-	-	✓	K3	Black	N/A	N/A
ACO SHOWERDRAIN C LINE	-	-	-	-	-	✓	-	-	K3	Grey	Medium	Wide
ACO SHOWER GULLIES	-	-	-	-	-	✓	-	-	K3	Grey	Medium	Wide

Key:

Load Classes And Typical Uses



A 15: Pedestrian, cycleways, minimally trafficked area (light domestic vehicles only)



K 3: Areas without vehicular traffic, such as dwellings, commercial and some public buildings.



B 125: Pedestrian precincts, light vehicles, private car parks.



C 250: Parking areas, service stations (cars) and slow-moving light commercial vehicles.

Material



Polymer Concrete



Plastic / Composite



Recycled Material



Steel



Aluminium

Suitability



Recommended



Not Recommended

Hydraulic Capacity



Low



Medium



High

Grating Choice



Limited



Small



Wide

Why choose ACO Water Management: Building + Landscape products?

ACO Water Management: Building + Landscape supplies intelligent drainage and landscaping solutions for building professionals.

The range offers a variety of building solutions, including compliance with Part M Building Regulations (England and Wales) and Section 4 Building Standards (Scotland) for level thresholds, to suit all prices and specifications.

These products save users' time and save stockists' space by keeping our product range strictly relevant to the building trade, self-build and DIY stockist.



General information

ACO products are subject to weight and dimensional tolerances. The weights and dimensions shown in this document are for guidance purposes only. ACO products are made from naturally occurring materials and may be subject to variations in colour, texture and marking. These aesthetic variations do not affect the performance or functionality of our goods. The appearance of products shown in our company documentation is for illustration purposes only.

Important information

Compliance documentation for ACO products that are covered by the Construction Products Regulation 2011 (CPR) can be downloaded at www.aco.co.uk



ACO Contact Details



Registered office address and contact details

ACO Technologies plc
ACO Business Park
Hitchin Road
Shefford
Bedfordshire
SG17 5TE

Tel: **+44(0)1462 816666**

Email: **technologies@aco.co.uk**

www.aco.co.uk

Company Registration No: 1854115

VAT No: GB 650 7977 05

Sales Office

Product availability, delivery lead times, and all other order queries including collections, returns and complaints.

Tel: **01462 816666**

Email: **customersupport@aco.co.uk**

Project Pricing

A complete pricing service to stockists, contractors and clients.

Tel: **01462 816666**

Email: **awmprojects@aco.co.uk**

Design Services Team

Technical and installation advice. Detailed design and “Value Engineering” advice. Hydraulic calculations and AutoCAD drawings. Advice on the suitability of ACO equivalent products.

Tel: **01462 816666**

Email: **technical@aco.co.uk**

For any stormwater control product technical queries please email **suds@aco.co.uk**

Product Training ACO Academy

ACO Academy is a flexible training resource that provides a range of courses that will keep you up to date with all the latest developments. Training is available either online, at branch or at the ACO Academy, Shefford

Tel: **01462 816666**

Email: **academy@aco.co.uk**

Marketing & Media Support

For all product brochures and imagery.

Tel: **01462 816666**

Email: **marketing@aco.co.uk**

ACO Merchant Zone: **www.aco.co.uk/merchant-zone**

ACO Building + Landscape Lead Times and Delivery Charges

Effective from 3rd January 2023

Deliveries

Product	Lead Time	All deliveries
Core Stock Products		
ACO HexDrain®	4 Days	<ul style="list-style-type: none"> Minimum order value is £450 nett. No split packs. Should order be < £450 carriage of £45 will be charged.
ACO HexDrain® Garage Pack		
ACO HexDrain® B 125		
ACO HexDrain® Pro		
ACO RainDrain®		
ACO RainDrain® B 125		
ACO CivicDrain®		
ACO HexDrain® Brickslot		
ACO RainDrain® Brickslot B 125		
ACO Threshold Drain		
ACO GroundGuard		
ACO GravelGuard		
ACO Complete the Look Gratings	4 Days	No carriage charge when ordered in full pack quantities.

Non Core Stock Products

ACO DoorWay Drain	Call sales office for best delivery	<ul style="list-style-type: none"> Minimum order value is £450 nett. Split packs available. Should order be < £450 carriage of £45 will be charged. Items marked with an asterisk are free delivery when ordered into stock only.
ACO StepDrain		
ACO BorderGuard		
ACO InDoor		
ACO DrainMat		
ACO Eyeleds		
ACO Rainwater Outlets*		
ACO StormBrixx SD*		
ACO Junior*		
ACO Triplex*		
ACO Quatrix*		
ACO ShowerDrain C Line*		
ACO Shower Gullies*		
ACO Bat Box	Should order be < £2,500 carriage of £50 will be charged.	
ACO Next Box		
ACO Wildlife Refuges		

Important Notes:

Areas	This document refers to England and Wales excluding post code areas (For Channel Islands, Isle of Wight, Isle of Man, N. Ireland & Eire please contact the Sales Office). This document refers to Scotland excluding post code areas IV, KW, AB, HS and ZE, for these post codes please contact the Sales Office.					
Pack Quantities	Minimum recommended order quantities are shown against individual products in this price list.					
Customer Orders	ACO do not accept verbal orders. Written orders can be sent via fax, e-mail or EDI					
Order Cut Off Times	All orders for stock items accepted before 12 noon will be delivered 3 working days later (for 4 day lead times) and are subject to public holidays.					
	Orders received by 12.00 noon on:	Monday	Tuesday	Wednesday	Thursday	Friday
	Delivery due:	Thursday	Friday	Monday	Tuesday	Wednesday
Lead times	Lead times quoted are subject to availability and order volumes.					
Deliveries	Standard deliveries are Monday to Friday between 8am and 5pm, out of hour's delivery may be possible. Please contact the Sales office for further details.					
Delivery Offload	All deliveries are made on curtain-sided vehicles for off-load by the customer. Specialist offload services may be available, check for availability and price. This may have an impact on lead times.					
Order Amendments	Any amendment request must be in writing and may affect quoted lead times/prices.					
Order Cancellations	Order cancellations must be received in writing and are subject to the current status of the order i.e. processed, picked or en-route. Charges may apply.					
Stock Returns	Returns are subject to prior written agreement and a 35% re-stocking charge. Additional transport charges may apply. Goods must be in a re-saleable condition as delivered, safely palletised and labelled prior to collection.					

Delivery Charges:

Standard delivery is £45.00. Other delivery services are available. Please contact the Sales Office for pricing and lead times.

Collection:

Collections must be pre-arranged 48 hours or more prior to collection date

ACO collection reference must be quoted at time of collection

Collections only possible Monday to Friday between 8am and 4pm

This document is in addition to our standard Conditions of Sale which can be found at the back of this price list or on the ACO website www.aco.co.uk
Further copies are also available from the Sales Office. To contact the Sales Office please call 01462 816666.

All material published in this price list is material for which copyright is owned by ACO Technologies plc and others. No part of any material may be copied or reproduced without prior permission of ACO Technologies plc or the copyright holder. If you would like permission to copy or reproduce the material from ACO Technologies plc, please contact us at marketing@aco.co.uk.

ACO HexDrain®



- ACO HexDrain® high quality, high strength domestic channel with plastic or galvanised steel gratings.
- Internal width 95mm. Channels manufactured using recycled polypropylene.
- Applications: Garage threshold, pedestrian precincts, block paving, patios and paths



Features

Choice of 'Complete the Look' gratings suitable for domestic applications

CE marked and fully certified to Load Class A 15 BS EN 1433:2002

Easy fit endcap for both male and female connections

Anti-splay and anti-shunt features for improved performance under trafficked conditions

Microgrip grating surface finish, provides increased grip for pedestrians (black plastic grating only)

Channels clip together for quick and easy on-site fabrication

Cutting guide to create half metre channels

Choice of eight vertical outlet positions on every channel

Installation guide clearly marked on the underside of the channel

COMPLETE THE LOOK

For more information on the ACO Complete The Look gratings please see pages 14-15

Product Code	Description	Length [mm]	Width Overall [mm]	Depth Overall [mm]	Invert [mm]	Weight [kg]	Pack Quantity
--------------	-------------	-------------	--------------------	--------------------	-------------	-------------	---------------

ACO HexDrain® channel assemblies

19310	Channel with black plastic grating 1m	1000	129	80	75	1.40	117
19313	Channel with galvanised steel grating 1m	1000	129	80	75	1.90	117

ACO HexDrain® accessories

399100	NEW FOR 2023! Corner unit with galvanised steel grating and vertical outlet	125	125	125	75	0.37	10
19559	Corner unit with black plastic grating and vertical outlet	125	125	125	75	0.20	10
19558	Black plastic sump unit †	174	Ø118	250	-	0.30	10
319288	Black plastic end cap	6	129	97	-	0.03	20
319289	Black plastic outlet end cap Ø110mm	-	129	135	-	0.07	8
19287	Accessory bag*	-	-	-	-	0.20	16
27123	Downpipe connector, HexDrain □65mm	142	133	48	-	0.89	1
27120	Downpipe connector, HexDrain Ø68mm	142	133	48	-	0.92	1



A 15 products are tested to a loading of 1.5 tonnes. No A 15 products are suitable for trafficking by heavy domestic vehicles such as 4x4s or SUVs.

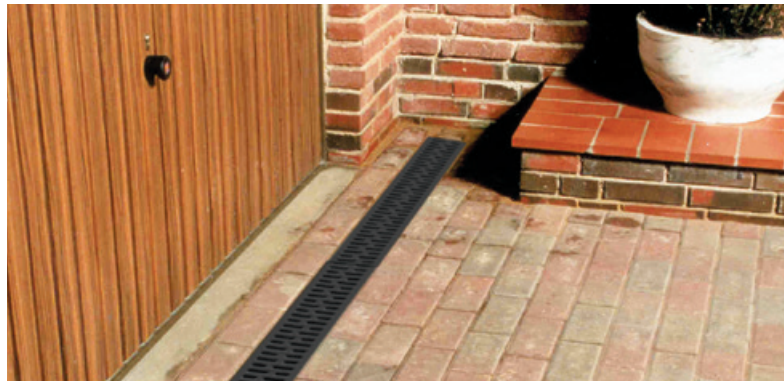
† Sump unit Ø110mm outlet spigot invert height from F.G.L = 285mm. Sump unit should be purchased with either corner unit c/w vertical outlet (Product code 19559) or the accessory bag containing the vertical outlet connector (Product code 19287).

* Accessory bag consists of ACO HexDrain' closing end cap (x2), ACO HexDrain' outlet connector, ACO HexDrain' leafguard and instruction document.

ACO HexDrain® Garage Pack



- ACO HexDrain® Garage Pack containing 3 x 1 metre black channels with black plastic gratings, accessories and installation instructions.
- Internal width 95mm. Channels and gratings manufactured using recycled polypropylene.
- Applications: Garage threshold



Features

Contains everything you need for a simple 3m installation
 3 x 1 m ACO HexDrain® channel and grating assemblies 2 x end caps
 1 x Ø110mm vertical outlet connector
 1 x leafguard



*complete
The look*

For more information
on the ACO Complete
The Look gratings
please see pages 14-15

Product Code	Description	Length [mm]	Width Overall [mm]	Depth Overall [mm]	Invert [mm]	Weight [kg]	Pack Quantity
43000	ACO HexDrain® Garage Pack	1048	129	240	75	4.40	24

Description	Length [mm]	Width Overall [mm]	Depth Overall [mm]	Invert [mm]	Weight [kg]
ACO HexDrain® Garage Pack contents					
3 x 1m Channel with black plastic grating	1000	125	80	75	4.20
2 x Closing end caps	6	125	97	-	0.06
1 x Ø110mm Vertical outlet connector	110	125	48	-	0.07
1 x Leafguard	70	70	65	-	0.02
1 x Instruction document	-	-	-	-	-

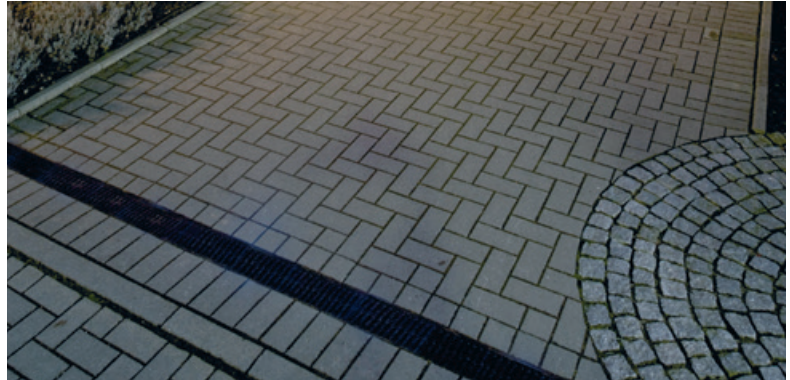
A 15 products are tested to a loading of 1.5 tonnes. No A 15 products are suitable for trafficking by heavy domestic vehicles such as 4x4s or SUVs.

Note: For more Information on accessories that can be used with the ACO HexDrain® Garage Pack, see page 6.

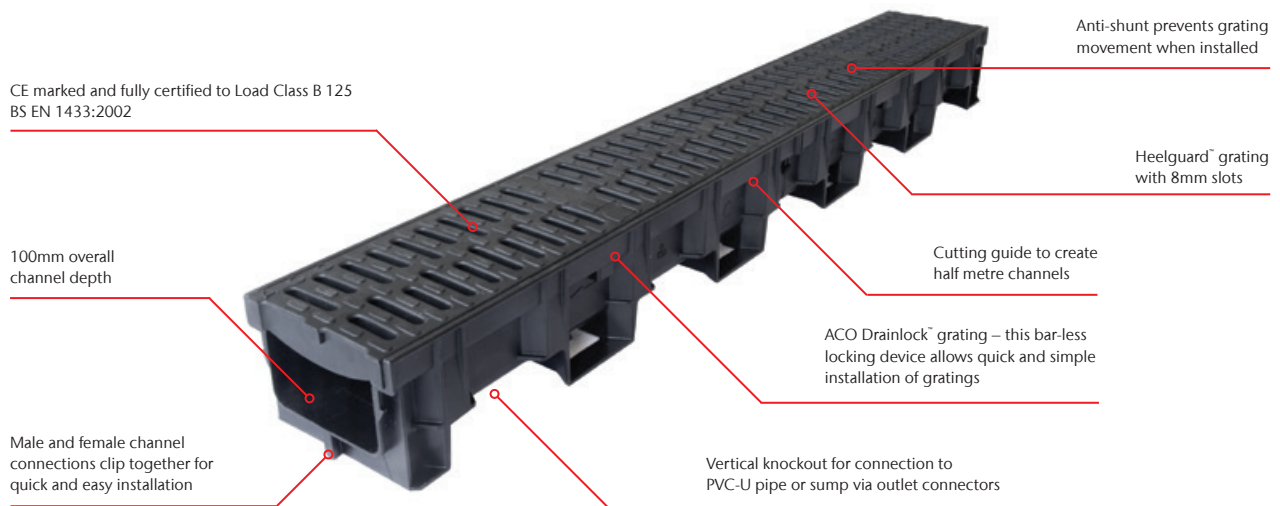
ACO HexDrain® B 125



- ACO HexDrain® B 125 high quality, high strength light duty channel drainage system with Heelguard™ grating.
- The system is available in one channel width.
- Applications: Driveways and small private car parks



Features



Product Code	Description	Length [mm]	Width Overall [mm]	Depth Overall [mm]	Invert [mm]	Weight [kg]	Pack Quantity
ACO HexDrain® B 125 channel assembly							
11019	Channel with 2 composite Heelguard™ gratings	1000	138	100	75	2.90	32
ACO HexDrain® B 125 drainage accessories							
11085	Universal closing end cap	11	138	105	-	0.10	10
11285	Ø110mm vertical outlet connector	-	Ø110	60	-	0.10	5
11191	Ø110mm roddable foul air-trap	240	Ø110	400	-	1.20	5
11385	Black plastic sump assembly c/w silt bucket*	-	Ø160	510	-	3.00	5
23415	Drainlock™ security locking assembly	-	-	-	-	0.10	1
23416	Drainlock™ security key	-	-	-	-	0.01	1
1367	Drainlock™ grating lifting tool 835	-	-	-	-	0.10	1



Universal closing end cap



Ø110mm vertical outlet connector



Ø110mm roddable foul air-trap



Sump unit with silt bucket

* Sump assembly consists of a Ø160mm vertical outlet connector, silt bucket and sump body. Sump unit: Ø110mm outlet (upper) invert height to F.G.L = 362mm. Ø110mm or Ø160mm outlet (lower) invert height to F.G.L = 632mm.

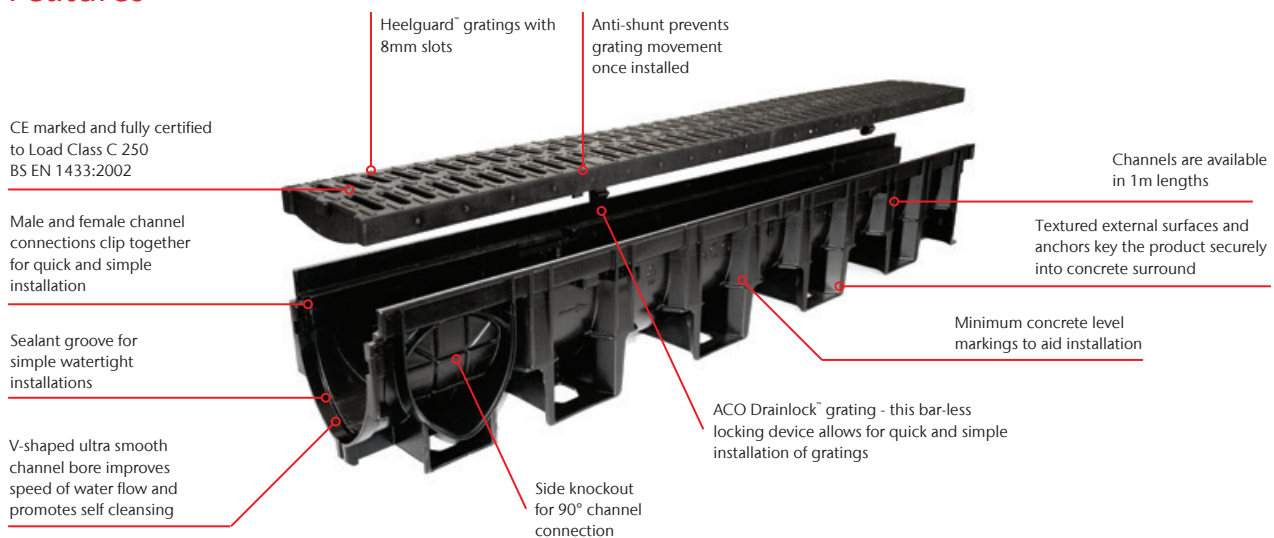
ACO HexDrain® Pro



- ACO HexDrain® Pro high quality, high strength general purpose channel drainage system with Heelguard™ grating.
- The system is available in one channel width. Channels with protective edge rail.
- Applications: Domestic landscaping, public landscaping, car parks



Features



Product Code	Description	Length [mm]	Width Overall [mm]	Depth Overall [mm]	Invert [mm]	Weight [kg]	Pack Quantity
--------------	-------------	----------------	-----------------------	-----------------------	----------------	----------------	---------------

ACO HexDrain® Pro channel assembly

11025	Channel with black composite Heelguard™ grating 1m	1000	138	150	125	3.7	24
-------	--	------	-----	-----	-----	-----	----

ACO HexDrain® Pro accessories

11086	Universal end cap	11	138	150	-	0.10	10
11285	Ø110mm vertical outlet connector	-	Ø110	60	-	0.10	5
11286	Ø160mm vertical outlet connector	-	Ø160	80	-	0.20	5
11191	Ø110mm roddable foul air-trap	240	Ø110	400	-	1.20	5
11192	Ø160mm roddable foul air-trap	340	Ø160	415	-	1.40	5
11385	Black plastic sump assembly c/w silt bucket*	-	Ø160	510	-	3.00	5
23415	Drainlock™ security locking assembly	-	-	-	-	0.10	1
23416	Drainlock™ security key	-	-	-	-	0.01	1
1367	Drainlock™ grating lifting tool 835	-	-	-	-	0.10	1



* Sump assembly consists of a Ø160mm vertical outlet connector, silt bucket and sump body. Sump unit: Ø110mm outlet (upper) invert height to F.G.L = 362mm. Ø110mm or Ø160mm outlet (lower) invert height to F.G.L = 632mm.

Note: System can be used with ACO Universal gully, please see ACO Water Management: Civils + Infrastructure Product Guide for details.

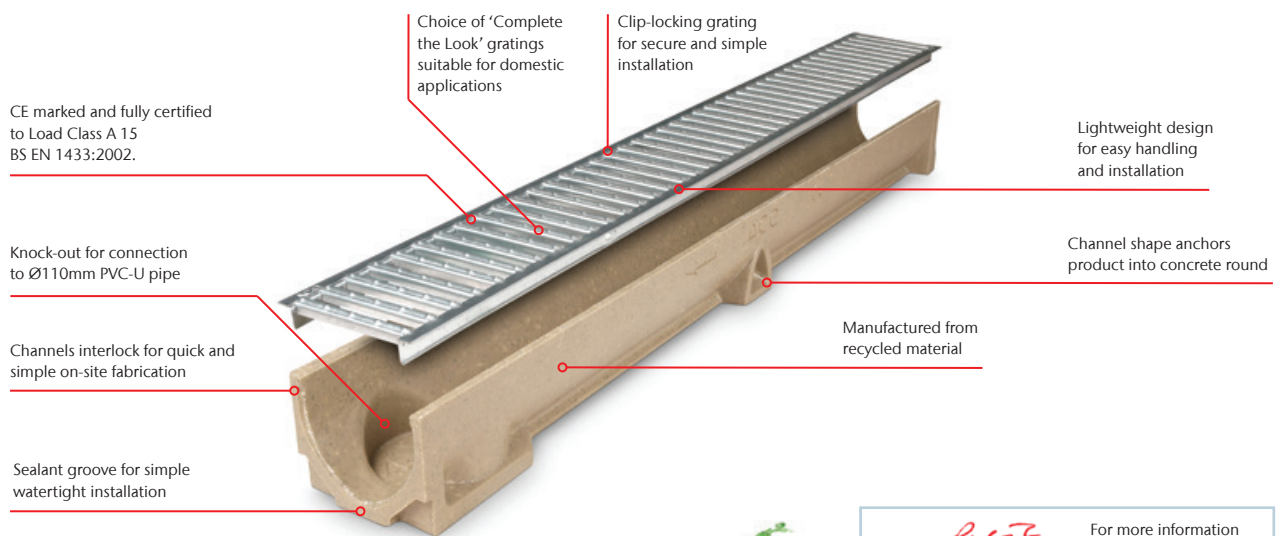
ACO RainDrain®



- ACO RainDrain® polymer concrete domestic channel with galvanised steel grating.
- Internal width 100mm.
- Channels manufactured from Vienite®, ACO's recycled polymer concrete material.
- Applications: Garage threshold, pedestrian precincts, block paving, patios and paths



Features



complete the look

For more information on the ACO Complete The Look gratings please see pages 14-15

Product Code	Description	Length [mm]	Width Overall [mm]	Depth Overall [mm]	Invert [mm]	Weight [kg]	Pack Quantity
ACO RainDrain® channel assembly							
47000	Channel with galvanised steel grating 1m	1000	118	97	87	7.38	81
ACO RainDrain® accessories							
38703	Sump with galvanised steel grating c/w silt bucket	500	118	303	275	11.3	1
47011	NEW! Corner Unit with galvanised steel grating and vertical outlet	120	135	156	60	0.47	6
319288	Closing end cap	6	129	97	-	0.03	20
319289	Outlet end cap Ø110mm	-	129	135	-	0.07	8
01684	Horizontal foul air-trap	100	Ø110	-	-	0.20	5
0056	820 Drain union PVC-U Ø110mm	100	Ø110	-	-	0.10	5
1367	Lifting tool 5mm slots	-	-	-	-	0.20	1
2618	Socket plug UPVC Ø110mm	110	110	42	-	0.12	1



Sump unit with silt bucket



Corner unit with galvanised steel grating



Closing end cap



Ø110mm outlet end cap



Ø110mm horizontal foul air-trap



Ø110mm drain union

A 15 products are tested to a loading of 1.5 tonnes. No A 15 products are suitable for trafficking by heavy domestic vehicles such as 4x4s or SUVs.

ACO RainDrain® B 125



- ACO RainDrain® B 125 polymer concrete light duty channel drainage system with cast iron grating.
- Internal width 100mm.
- Channels manufactured from Vienite®, ACO's recycled polymer concrete material.
- Applications: Driveways and small private car parks



Features

CE marked and fully certified to Load Class B 125 BS EN 1433:2002.

Channels interlock for quick and simple on-site fabrication

Profile improves speed of water and promotes self cleansing

Knock-out for connection to Ø110mm PVC-U pipe

Clip-locking grating for secure and simple installation

Cast iron Heel-guard™ A Tec grating for Load class B 125

Lightweight design for easy handling and installation

Channel shape anchors product into concrete surround

Sealant groove for simple watertight installation



Channel with Mosaic grating

Product Code	Description	Length [mm]	Width Overall [mm]	Depth Overall [mm]	Invert [mm]	Weight [kg]	Pack Quantity
ACO RainDrain® B 125 channel assembly							
47001	Channel with cast iron Heelguard™ A Tec grating 1m	1000	118	97	87	10.97	56
47008	NEW! Channel with Mosaic Heelguard™ A Tec grating 1m	1000	118	97	87	10.97	40
ACO RainDrain® B 125 accessories							
47006	Sump with cast iron Heelguard™ A Tec grating c/w silt bucket	500	118	303	275	13.6	1
47007	NEW! Sump unit with Mosaic Heelguard™ A Tec grating c/w silt bucket	500	118	303	275	13.6	1
47010	Corner Unit with cast iron grating and vertical outlet	120	135	159	60	0.93	6
319288	Closing end cap	6	129	97	-	0.03	20
319289	Outlet end cap Ø110mm	-	129	135	-	0.07	8
01684	Horizontal foul air-trap	100	Ø110	-	-	0.20	5
0056	820 Drain union PVC-U Ø110mm	100	Ø110	-	-	0.10	5
1367	Lifting tool 5mm slots	-	-	-	-	0.20	1
2618	Socket plug UPVC Ø110mm	110	110	42	-	0.12	1



Sump with cast iron Heelguard™ A Tec grating with silt bucket



Sump with Mosaic Heelguard™ A Tec grating with silt bucket



Corner unit with cast iron grating



Closing end cap



Ø110mm outlet end cap



Ø110mm horizontal foul air-trap



Ø110mm drain union

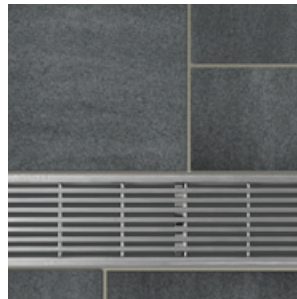
ACO Complete the Look Gratings

- ACO range of elegant and modern grating finishes provide choice and style to 'Complete the Look' of driveway and patio projects.
- Designed to be used with ACO's best-selling domestic drainage channels ACO HexDrain® and ACO RainDrain®, a choice of gratings are now available to provide the perfect finish.



Wedge Wire Grating

Add prestige and value to your patio with the contemporary elegance of ACO's stainless steel.



Polished Stainless Steel

Cool and contemporary, ACO's Polished Stainless Steel grating gives driveways and patios a modern look.



Anthracite

High quality looks can be achieved with the versatile Anthracite grating.



Galvanised Steel

Elegance and warmth to suit traditional and contemporary settings.



Black Plastic

Renowned for quality and durability, ACO's Black Plastic grating will maintain its looks for years.



Antique Iron Heelguard (ATec Grating)

ACO's stylish Antique Iron ATec coated grating is Heelguard™ certified, making it ideal for patio and driveway areas.



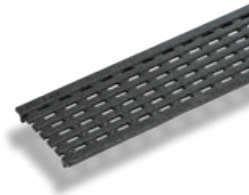
Mosaic Heelguard (ATec Grating)

Add long lasting style to your driveway or patio with the robust ATec coated, ACO Mosaic grating.



Intercept Heelguard (ATec Grating)

ACO's stylish Intercept ATec coated grating is Heelguard™ certified, making it ideal for patio and driveway areas.





Product Code	Description	Load class if used with HexDrain®	Load class if used with RainDrain®	Length [mm]	Width Overall [mm]	Depth Overall [mm]	Weight [kg]	Pack Quantity
ACO Complete the Look Gratings								
10323	Wedge Wire Stainless Steel	A 15	A 15	1000	118	15	3.00	5
310307	Polished Stainless Steel	A 15	A 15	1000	118	15	1.20	5
10305	Anthracite	A 15	A 15	1000	118	15	1.30	5
38516	Galvanised Steel	A 15	A 15	1000	118	15	1.30	5
319250	Black Plastic	A 15	A 15	1000	118	15	0.70	5
20400	Antique Iron Heelguard™ ATec	A 15	B 125	500	118	15	2.45	10
20401	Mosaic Heelguard™ ATec	A 15	B 125	500	118	15	2.85	10
20402	Intercept Heelguard™ ATec	A 15	B 125	500	118	15	2.53	10

Note: B 125 load classification can be achieved when the 20400 Antique Iron Heelguard™ A Tee grating, 20402 Intercept Heelguard™ ATec grating or the 20401 Mosaic Heelguard™ ATec grating is installed in conjunction with the ACO RainDrain- channel body. A 15 product] are tested to a loading of 1.5 tonnes. No A 15 products are suitable for trafficking by heavy domestic vehicles such as 4x4s or SUVs.

**BUILDING+
LANDSCAPE**
VISUALISER

For more information visit
www.aco.co.uk/building-landscape-visualiser



These complete the look gratings can be used with either RainDrain® or HexDrain® channel bodies



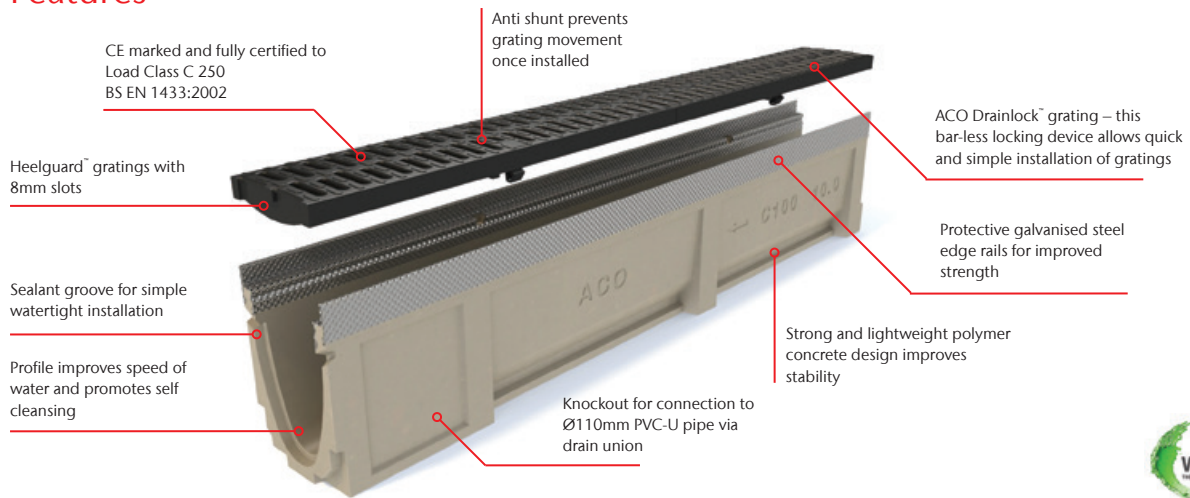
ACO CivicDrain®



- ACO CivicDrain® polymer concrete general purpose channel drainage system.
- Internal width 100mm.
- Channels with protective galvanised steel edge rails manufactured from Vienite®. ACO's recycled polymer concrete material. Available in three depths to create a stepped system where required.
- Applications: Domestic landscaping, public landscaping and car parks



Features



Product Code	Description	Length [mm]	Width Overall [mm]	Depth Overall [mm]	Invert [mm]	Weight [kg]	Pack Quantity
ACO CivicDrain® channel assembly							
25010	0.0 channel with black composite Heelguard™ grating	1000	135	150	130	14.4	24
25011	10.0 channel with black composite Heelguard™ grating	1000	135	200	180	18.8	40
25012	20.0 channel with black composite Heelguard™ grating	1000	135	250	230	22.5	32
ACO CivicDrain® accessories							
12680	522DL black composite Heelguard™ grating	500	123	21	-	1.20	1
12601	50mm step connector	100	75	50	-	0.40	10
23404	Multifunctional end cap	-	135	75/300	-	0.16	25
23410	Universal sump with plastic silt bucket*	500	135	635	615	32.80	8
0056	820 Drain union PVC-U Ø110mm	100	Ø110	-	-	0.10	5
2640	920 Foul air-trap PVC-U Ø110mm	-	Ø110	-	-	0.50	5
7931	940 Roddable foul air trap MDPE Ø110mm	-	Ø110	-	-	0.60	5
23415	Drainlock™ security locking assembly	-	-	-	-	0.10	1
23416	Drainlock™ security key	-	-	-	-	0.01	1
1367	Drainlock™ grating lifting tool 835	-	-	-	-	0.10	1



522DL Black composite Heelguard™ grating



50mm Step connector



Multifunctional end cap



Universal sump with plastic silt bucket



Ø110mm drain union PVC-U



Ø110mm foul air-trap PVC-U

* Grating must be purchased separately.

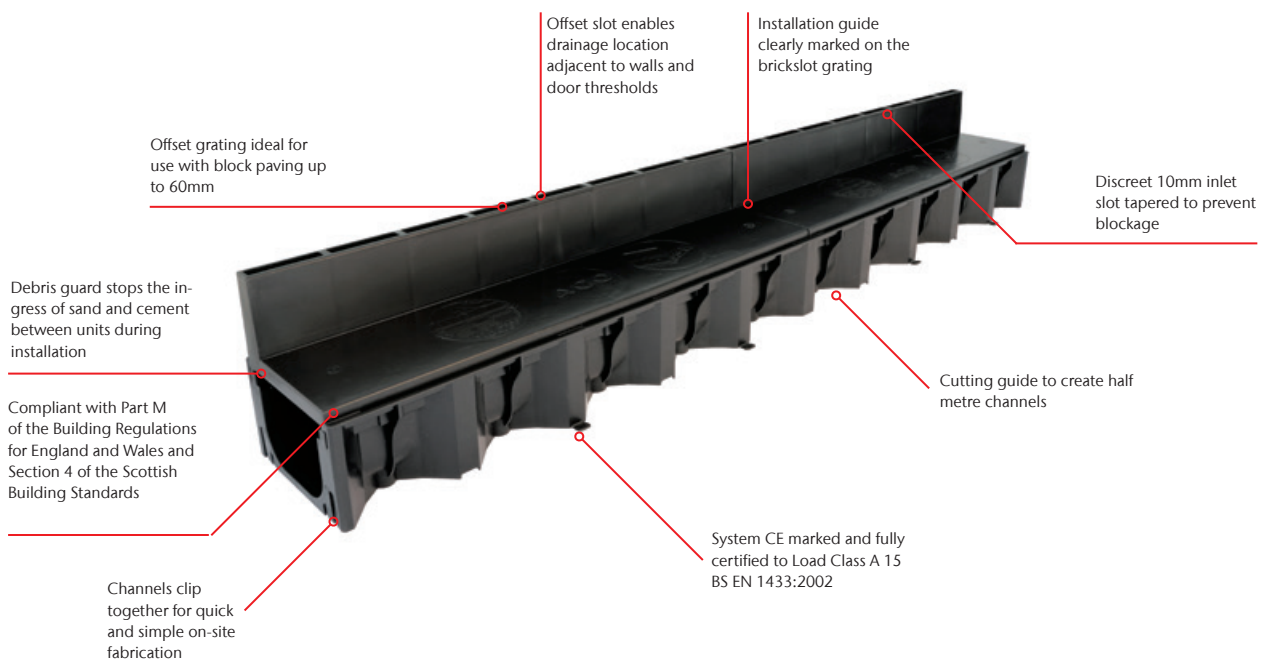
ACO HexDrain® Brickslot



- High quality, high strength domestic channel with black plastic 10mm slotted grating.
- Internal width 95mm.
- Channels and gratings manufactured using recycled polypropylene.
- Applications: Garage threshold, pedestrian precincts, block paving, patios and paths



Features



Product Code	Description	Length [mm]	Width Overall [mm]	Depth Overall [mm]	Invert [mm]	Weight [kg]	Pack Quantity
ACO HexDrain® Brickslot channel assembly							
319561	Channel with black plastic slotted grating 1m	1000	129	148	143	1.60	60
ACO HexDrain® Brickslot accessories							
319560	Corner unit with black plastic slotted grating and vertical outlet	125	125	193	143	0.40	10
19558	Black plastic sump unit ††	174	Ø118	250	-	0.30	10
319288	Closing end cap	6	129	97	-	0.03	20



Access unit/ corner unit with black plastic slotted grating and ø110mm vertical outlet



Sump unit



Closing end cap

†† Sump unit Ø110mm outlet spigot invert height from f.C.L. = 345mm. Sump unit should be purchased with corner unit with black plastic slotted grating and vertical outlet (Product code 319560).

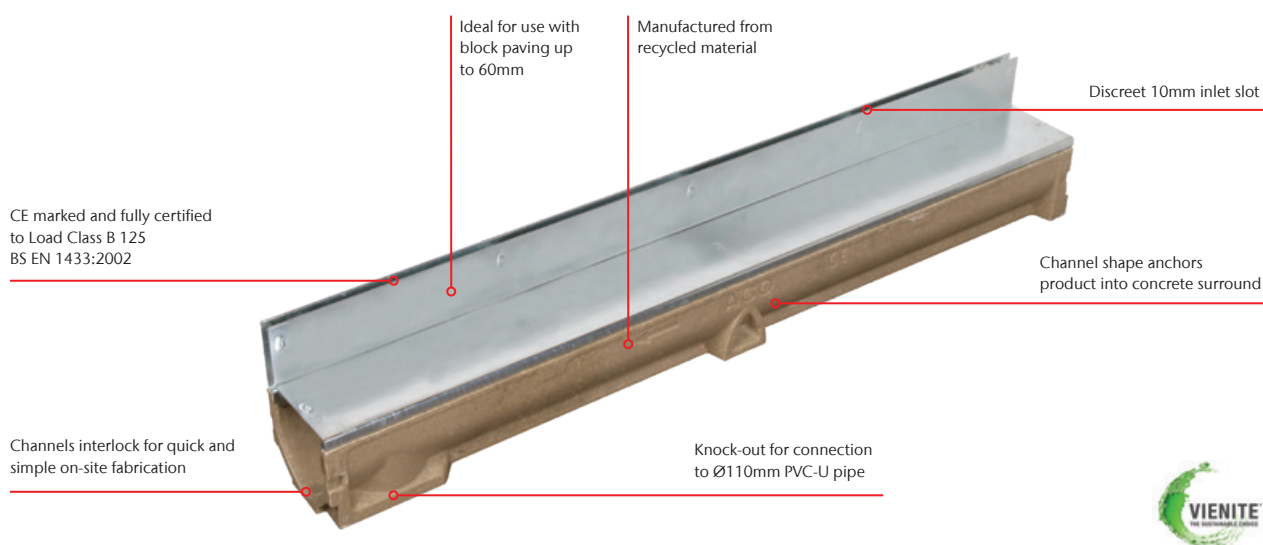
ACO RainDrain® Brickslot B 125



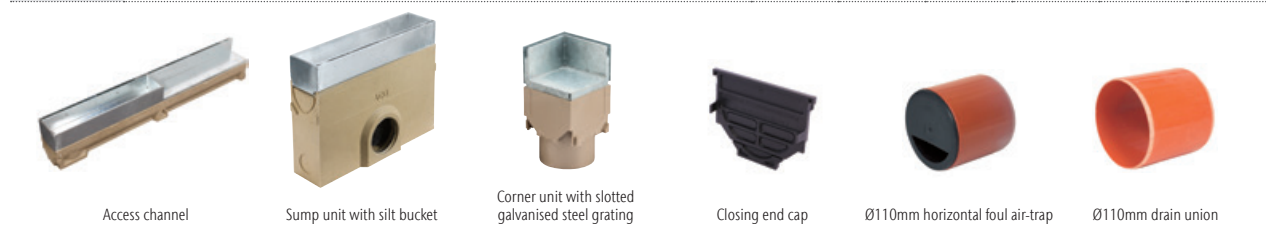
- ACO RainDrain® Brickslot B 125 high quality, high strength domestic channel with galvanised steel 10mm slotted grating.
- Internal width 100mm.
- Channels manufactured from Vienite®, ACO's recycled polymer concrete material.
- Applications: Driveways and small private car park



Features



Product Code	Description	Length [mm]	Width Overall [mm]	Depth Overall [mm]	Invert [mm]	Weight [kg]	Pack Quantity
ACO RainDrain® Brickslot B 125 channel assemblies							
47002	Channel with slotted galvanised steel grating	1000	118	173	163	10.0	32
47003	Channel with slotted galvanised grate and access cover	1000	118	173	163	11.0	8
ACO RainDrain® Brickslot B 125 accessories							
47004	Sump with galvanised access cover c/w silt bucket	500	118	378	360	12.8	1
47009	NEW! Corner Unit with slotted galvanised steel grating and vertical outlet	120	135	233	60	0.9	6
319288	Closing end cap	6	129	97	-	0.03	20
01684	Horizontal foul air-trap	100	Ø110	-	-	0.20	5
0056	820 Drain union PVC-U Ø110mm	100	Ø110	-	-	0.10	5
2618	Socket plug UPVC Ø110mm	110	110	42	-	0.12	1



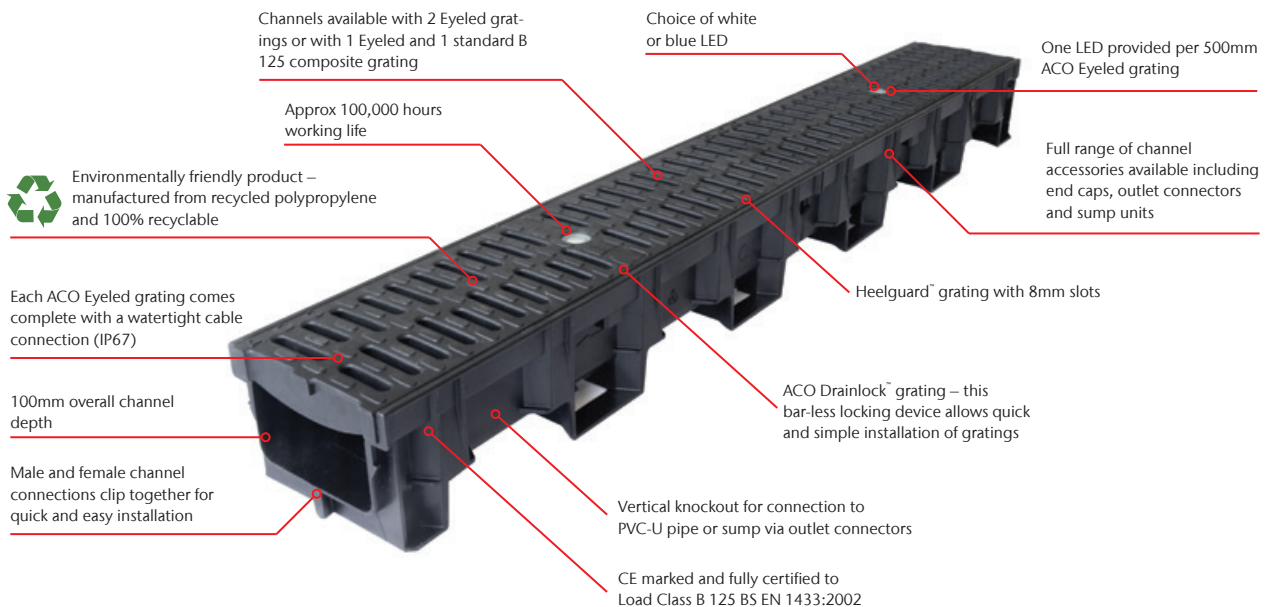
ACO Eyeleds



- Domestic lighting and drainage system for external applications.
- The ACO Eyeled gratings are fitted with LED lights which are available in a choice of colours, white or blue.
- Manufactured using recycled polypropylene.
- Applications: Block paving, driveways, patios and pedestrian precincts



Features



Product Code	Description	Length [mm]	Width Overall [mm]	Depth Overall [mm]	Invert [mm]	Weight [kg]	Pack Quantity
ACO Eyeleds channel assemblies							
11404	Channel with 2 Eyeled gratings (white LED)	1000	138	100	75	3.20	30
11405	Channel with 1 Eyeled grating and 1 B 125 composite grating (white LED)	1000	138	100	75	3.05	30
11406	Channel with 2 Eyeled gratings (blue LED)	1000	138	100	75	3.20	30
11407	Channel with 1 Eyeled grating and 1 B 125 composite grating (blue LED)	1000	138	100	75	3.05	30

Product Code	Description	Length	Width Overall	Depth Overall	Invert	Weight	Pack Quantity
		[mm]	[mm]	[mm]	[mm]	[kg]	

ACO Eyeleds lighting accessories

12736	Transformer unit	-	-	-	-	0.51	1
12714	Cable splitter 300 x 300mm	-	-	-	-	0.06	1
12726	Cable splitter 600 x 600mm	-	-	-	-	0.08	1
12713	Cable splitter 300 x 1500mm	-	-	-	-	0.11	1
12716	Extension cable 2000mm	-	-	-	-	0.10	1
12715	Extension cable 5000mm	-	-	-	-	0.23	1
12724	Cable connection plug	-	-	-	-	0.003	1



Transformer unit
(for up to 40 Eyeled gratings)



Cable splitter



Extension cable



Cable connection plug

Product Code	Description	Length	Width Overall	Depth Overall	Invert	Weight	Pack Quantity
		[mm]	[mm]	[mm]	[mm]	[kg]	

ACO Eyeleds drainage accessories

11085	Universal end cap	11	138	105	-	0.10	10
11285	Ø110mm vertical outlet connector	-	Ø110	60	-	0.10	5
11286	Ø160mm vertical outlet connector	-	Ø160	80	-	0.10	5
11191	Ø110mm roddable foul air-trap	240	Ø110	400	-	1.20	5
11192	Ø160mm roddable foul air-trap	340	Ø160	415	-	1.40	5
11385	Black plastic sump assembly c/w silt bucket*	-	Ø160	510	-	3.00	5



Universal
end cap



ACO Eyeleds Ø110mm
vertical outlet connector



ACO Eyeleds Ø160mm
vertical outlet connector



ACO Eyeleds Ø110mm
roddable foul air-trap



ACO Eyeleds Ø160mm
roddable foul air-trap



ACO Eyeleds sump unit

* Sump assembly consists of a Ø160mm vertical outlet connector, silt bucket and sump body. Sump unit: Ø110mm outlet (upper) invert height to F.G.L = 362mm. Ø110mm or Ø160mm outlet (lower) invert height to F.G.L = 632mm.

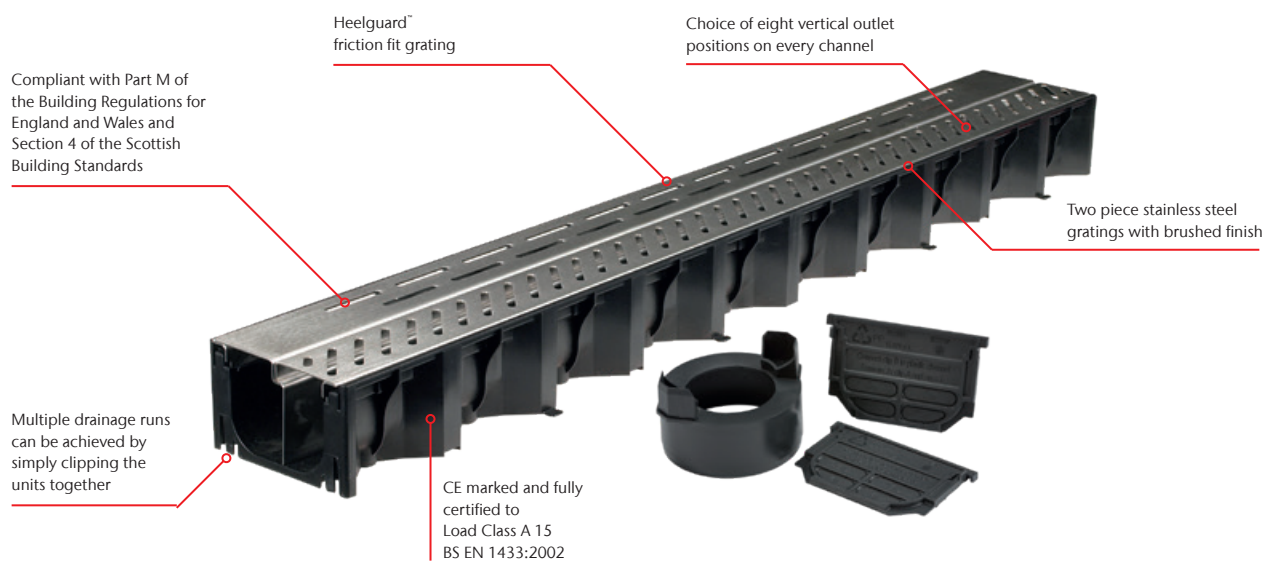
ACO Doorway Drain



- ACO Doorway Drain threshold drainage assembly.
- Overall width 125mm, level threshold drainage unit consists of 1m channel with removable two-piece stainless steel grating, 2 x end caps and Ø110mm vertical outlet.
- Applications: Level thresholds



Features



Product Code	Description	Length [mm]	Width Overall [mm]	Depth Overall [mm]	Invert [mm]	Weight [kg]	Pack Quantity
ACO DoorWay Drain channel assembly							
40015	ACO DoorWay Drain	1012	129	80	75	4.00	72

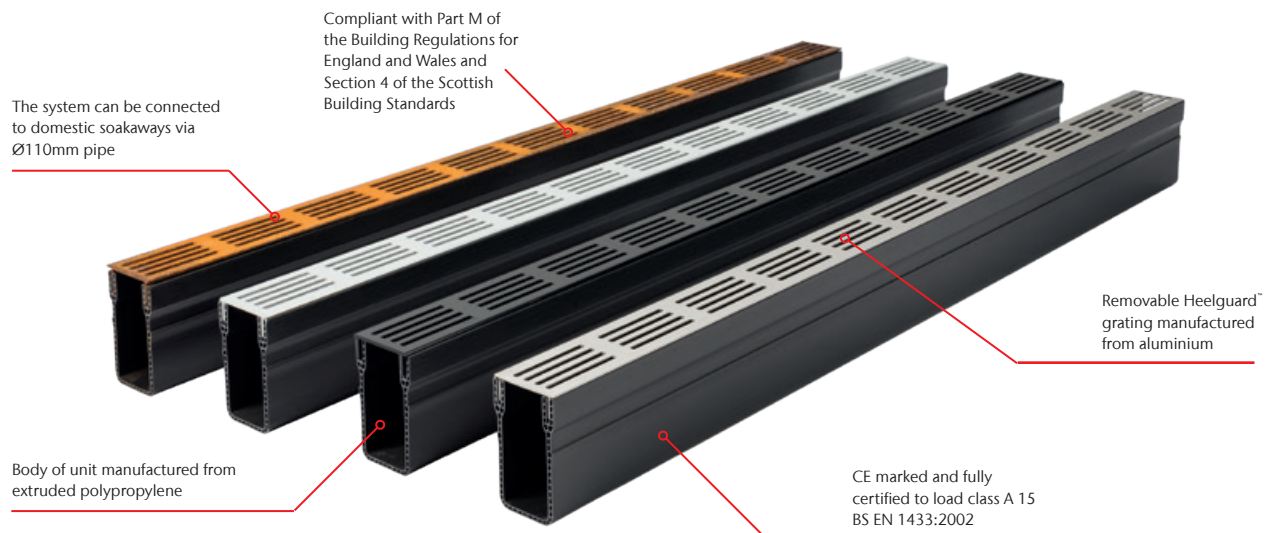
ACO Threshold Drain



- A discreet 60mm wide system.
- Choice of aluminium grate and casing made from extruded polypropylene.
- Easy to install and can be connected to domestic soakaways by Ø110mm pipe.
- Applications: Level thresholds



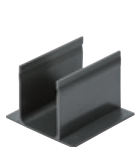
Features



Product Code	Description	Length [mm]	Width Overall [mm]	Depth Overall [mm]	Invert [mm]	Weight [kg]	Pack Quantity
ACO Threshold Drain							
19000	ACO Threshold Drain - silver aluminium grating	1000	61	100	93	1.63	36
19005	ACO Threshold Drain - black aluminium grating	1000	61	100	93	1.63	36
19012	ACO Threshold Drain - CorTen steel grating*	1000	61	100	93	1.63	36
19058	NEW! ACO Threshold Drain - stainless steel grating	1000	61	100	93	1.63	36



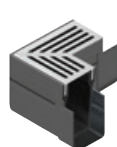
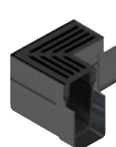
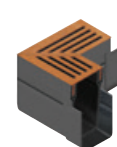
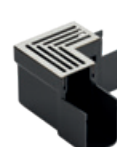
Product Code	Description	Length [mm]	Width Overall [mm]	Depth Overall [mm]	Invert [mm]	Weight [kg]	Pack Quantity
ACO Threshold Drain Accessories							
19001	Drain connector	100	100	70	N/A	0.11	5
19003	Outlet end cap Ø50mm	30	61	100	N/A	0.03	5
19004	End cap	20	61	100	N/A	0.03	5
19011	Bottom outlet Ø110mm	133	133	133	N/A	0.04	5
19006	Corner unit assembly c/w silver aluminium grating	159	61	100	N/A	0.40	4
19007	Corner unit assembly c/w black aluminium grating	159	61	100	N/A	0.40	4
19013	Corner unit assembly c/w CorTen steel grating*	159	61	100	N/A	0.40	4
19059	NEW! Corner unit assembly c/w stainless steel grating	159	61	100	N/A	0.40	4



Drain connector

Ø50mm outlet
end cap

End cap

Ø110mm
bottom outletSilver aluminium grating
corner unitBlack aluminium grating
corner unitCorten steel grating
corner unitStainless steel grating
corner unit

* CorTen develops its characteristic rusty appearance after it has been exposed to rainwater. This surface, the so called patina is an oxidation layer that protects the metal from further corrosion. During formation of the patina, the rainwater may also get a rusty brown colour and therefore can leave stains when it comes into contact with other (porous) surfaces. It is of great importance to install the channel 3-5mm below the adjacent paving level, such that during heavy rainfall, no water will flow back on the paving. When using very porous paving material and/or light coloured pavings are used, it is recommended to allow the CorTen gratings to corrode on a safe location and only install them on the channels when the patina has fully developed. ACO bears no responsibility for stains on pavings when using CorTen gratings. In case of doubt, we recommend to use our aluminium gratings with this channel.

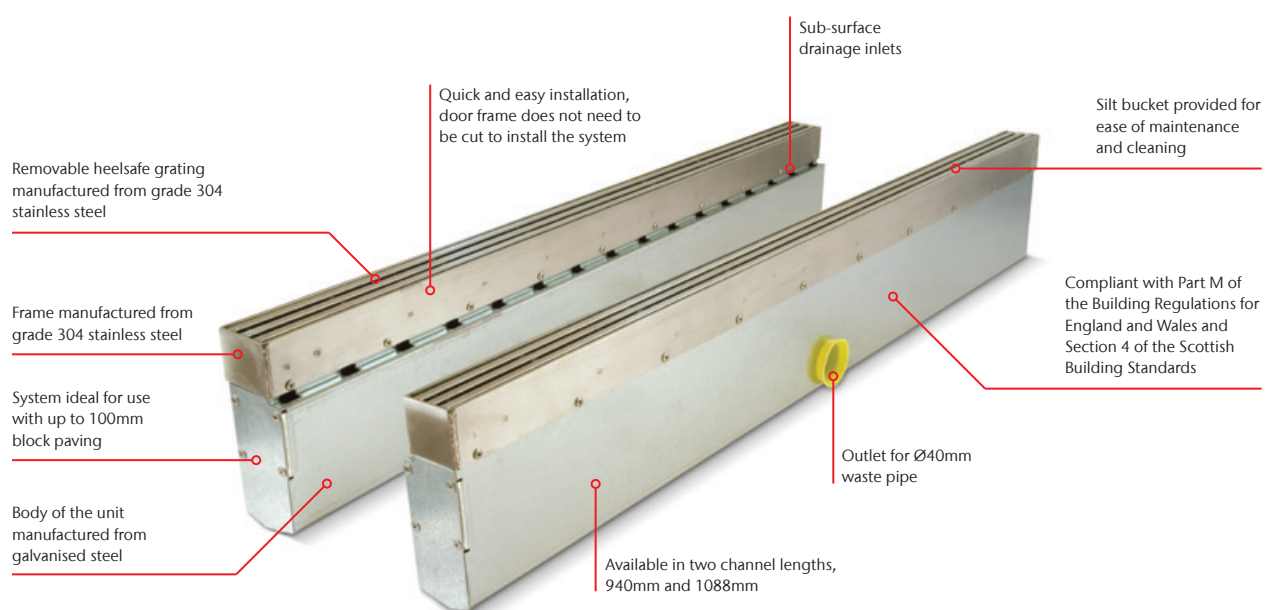
ACO StepDrain



- ACO StepDrain stainless steel doorway drainage unit.
- Internal width 44mm, level threshold drainage unit.
- Applications: Level thresholds



Features



Product Code	Description	Length [mm]	Width Overall [mm]	Depth Overall [mm]	Invert [mm]	Weight [kg]	Pack Quantity
ACO StepDrain channel assembly							
96809	ACO StepDrain channel assembly	940	53	159	150	9.0	35
96848	ACO StepDrain channel assembly	1088	53	159	150	10.4	30

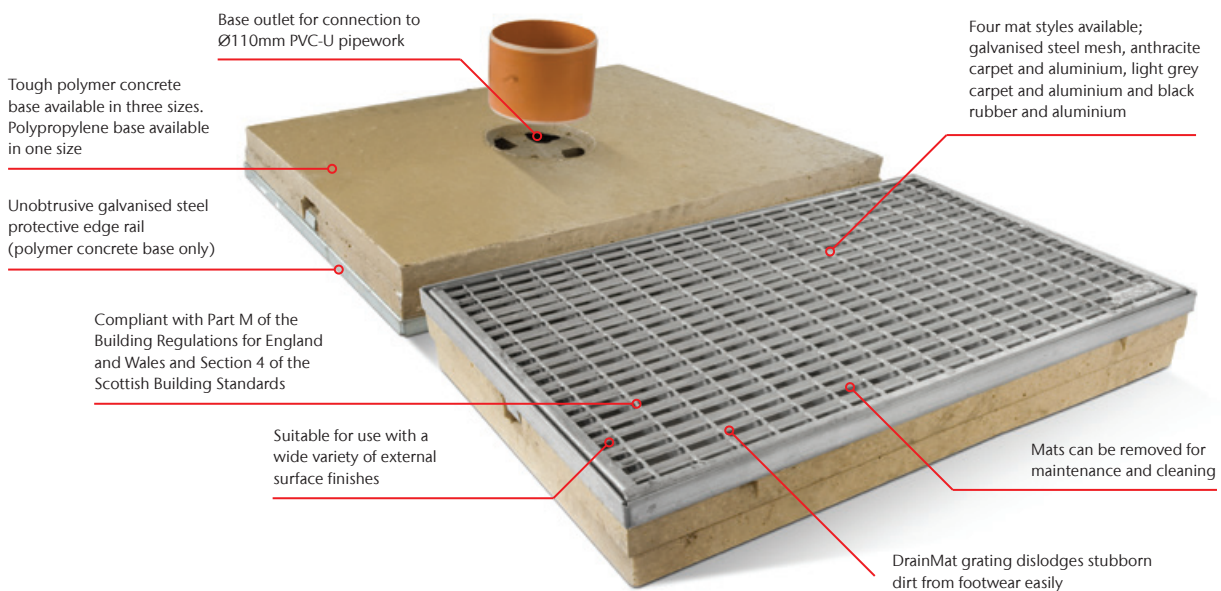


ACO DrainMat

- ACO DrainMat domestic matwell assembly.
- The system has the choice of either a polymer concrete or polypropylene base, available with four mat styles. All bases come complete with an Ø110mm vertical outlet for water drainage.
- Applications: External level thresholds



Features



Product Code	Description	Length [mm]	Width Overall [mm]	Depth Overall [mm]	Invert [mm]	Weight [kg]	Pack Quantity
ACO DrainMat polymer concrete bases							
0398	Polymer concrete base 600 x 400	600	400	80	-	12.0	20
0399	Polymer concrete base 750 x 500	750	500	80	-	18.0	20
0400	Polymer concrete base 1000 x 500	1000	500	80	-	21.6	20
ACO DrainMat polypropylene base							
82400	Polypropylene base 600 x 400	600	400	75	-	1.50	20



Polypropylene base

Note: For information on ACO DrainMat accessories please see page 26.

ACO DrainMat Accessories



Product Code	Description	Length [mm]	Width Overall [mm]	Depth Overall [mm]	Invert [mm]	Weight [kg]	Pack Quantity
ACO DrainMat accessories							
1207	Galvanised steel mesh 600 x 400	600	400	20	-	4.00	20
1208	Galvanised steel mesh 750 x 500	750	500	20	-	6.30	20
1209	Galvanised steel mesh 1000 x 500	1000	500	20	-	8.60	20
1210	Anthracite carpet and aluminium 600 x 400	600	400	20	-	3.50	4
1211	Anthracite carpet and aluminium 750 x 500	750	500	20	-	4.70	4
1212	Anthracite carpet and aluminium 1000 x 500	1000	500	20	-	6.30	4
02180	Light grey carpet and aluminium 600 x 400	600	400	20	-	3.50	4
02181	Light grey carpet and aluminium 750 x 500	750	500	20	-	4.70	4
02182	Light grey carpet and aluminium 1000 x 500	1000	500	20	-	6.30	4
1213	Black rubber and aluminium 600 x 400	600	400	20	-	3.50	4
1214	Black rubber and aluminium 750 x 500	750	500	20	-	5.60	4
1215	Black rubber and aluminium 1000 x 500	1000	500	20	-	7.50	4
0056	820 Drain union PVC-U Ø110mm	100	Ø110	-	-	0.10	5



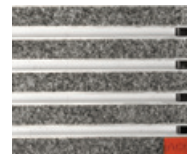
ACO DrainMat polypropylene base
(image shows base with mat,
mat supplied separately)



Galvanised steel mesh



Anthracite carpet and
aluminium mat



Light grey carpet and
aluminium mat



Black rubber and
aluminium mat



Ø110mm drain union

Note: For information on ACO DrainMat accessories please see page 25.

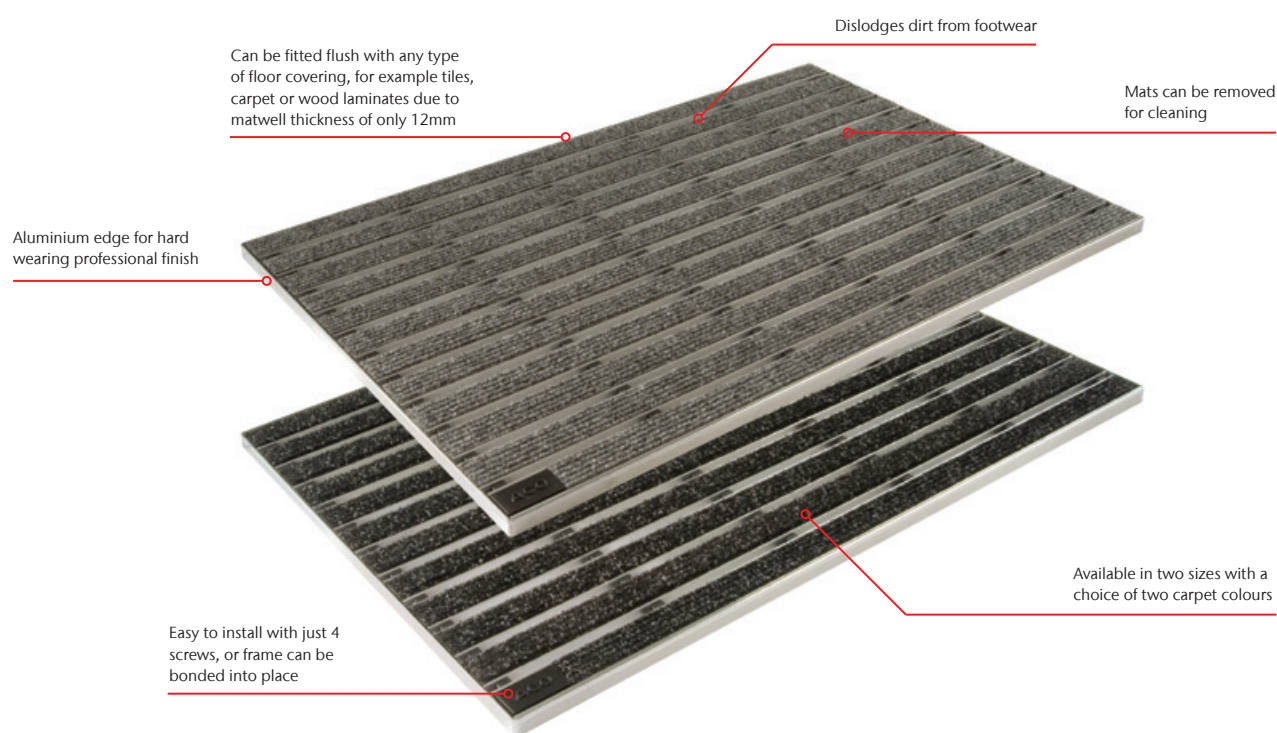


ACO InDoor

- ACO InDoor interior flush fitting matwell assembly.
- The aluminium frame and mat is available in two sizes and two carpet colour.
- Applications: Internal level thresholds



Features



Product Code	Description	Length [mm]	Width Overall [mm]	Depth Overall [mm]	Invert [mm]	Weight [kg]	Pack Quantity
ACO InDoor matwell assemblies							
37250	Anthracite carpet and aluminium 600 x 400	600	400	12	-	2.80	4
37255	Anthracite carpet and aluminium 750 x 500	750	500	12	-	4.40	4
37251	Light grey carpet and aluminium 600 x 400	600	400	12	-	2.80	4
37256	Light grey carpet and aluminium 750 x 500	750	500	12	-	4.40	4

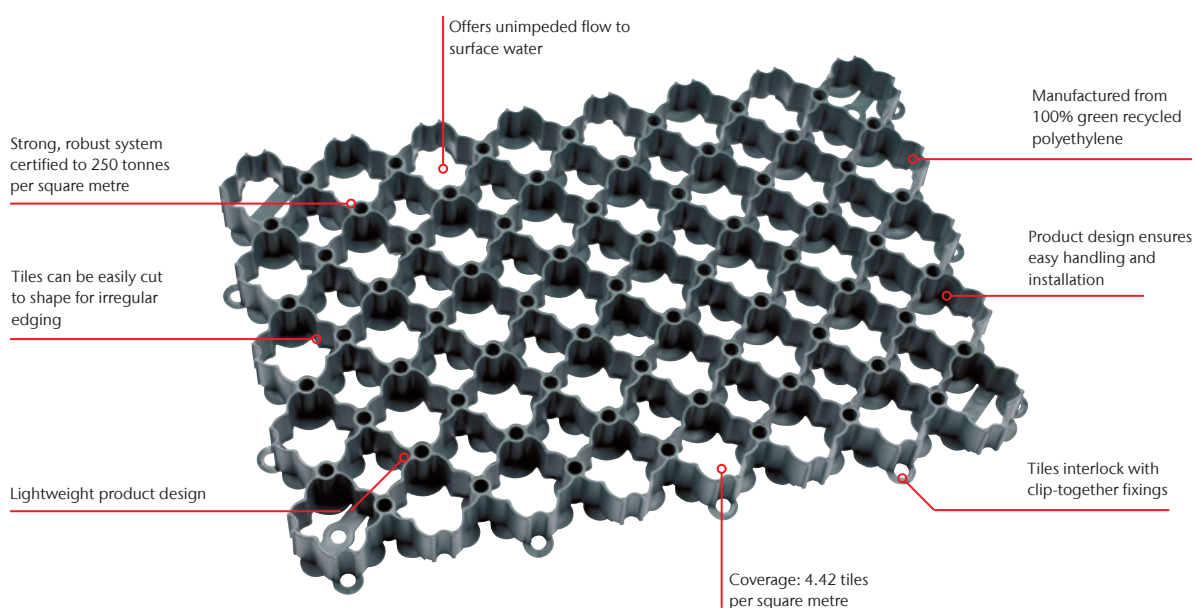
ACO GroundGuard



- Lightweight permanent ground reinforcement.
- Recycled green polyethylene plastic tiles, certified to 250 tonnes per square metre. Use seven white parking bay markers per metre of line required.
- Applications: Access routes, caravan parks, domestic drives, paths, private and public parking areas



Features



Product Code	Description	Length [mm]	Width Overall [mm]	Depth Overall [mm]	Weight [kg]	Pack Quantity
ACO GroundGuard						
81070	GroundGuard tile	585	385	38	1.30	112
81072	White parking bay marker	-	-	38	0.10	10
81073	ACO 180mm steel nails (bag 50)	180	6	-	1.30	1



White parking bay markers



ACO 180mm steel nail

Note: 4.42 tiles per 1m². One pallet covers 25.2m².

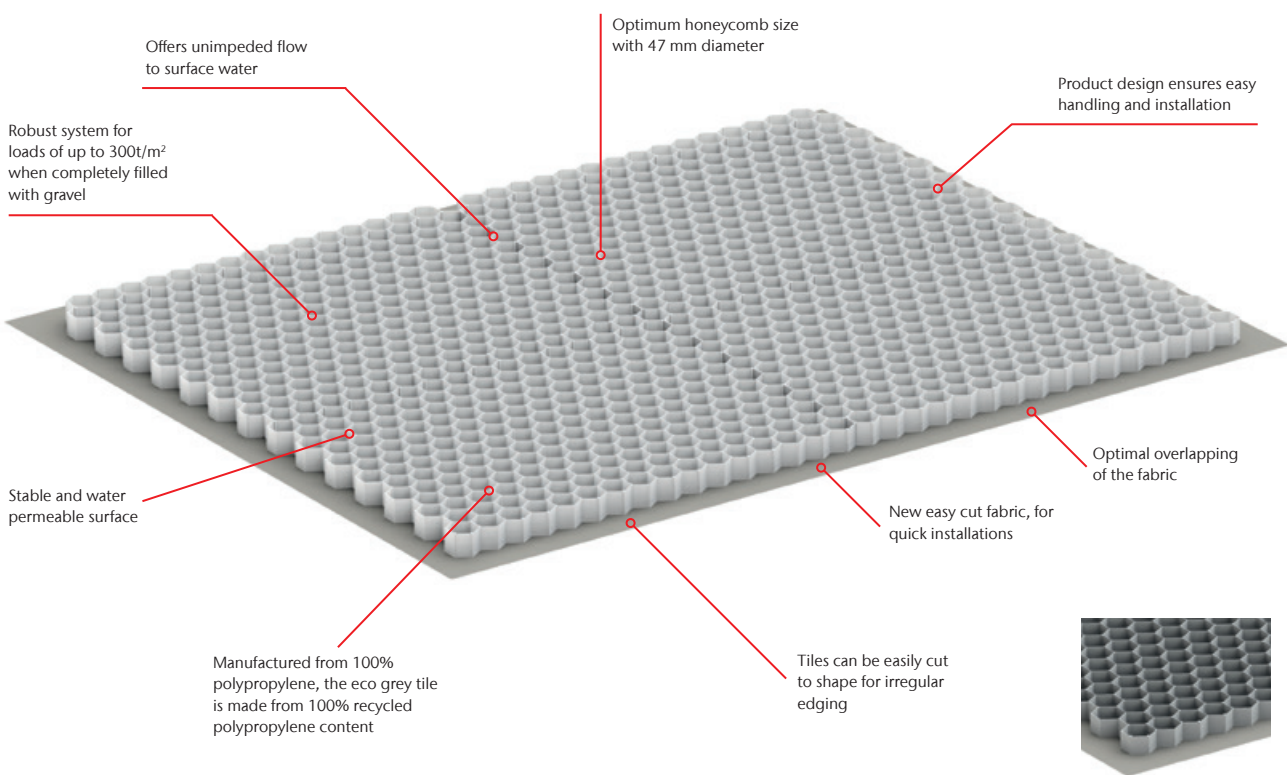
ACO GravelGuard



- ACO GravelGuard stabilises gravel for pedestrian and vehicle access.
- The incorporated geo-textile helps to reduce weed growth and speeds up installation.
- Designed to be installed with gravel 3-16mm in diameter, thanks to its large 47mm mm diameter honeycomb design.
- Applications: Driveways*, paths and shed bases



Features



GravelGuard grey option

Product Code	Description	Length [mm]	Width Overall [mm]	Depth Overall [mm]	Weight [kg]	Pack Quantity
281093	GravelGuard white tile	1176	1535	30	3	17
281095	GravelGuard grey eco tile	1176	1535	30	3	17
81073	ACO 180mm steel nails (bag 50)	180	6	-	1.30	1

Note: One pallet of GravelGuard covers per 30.68m².

* When completely filled with gravel

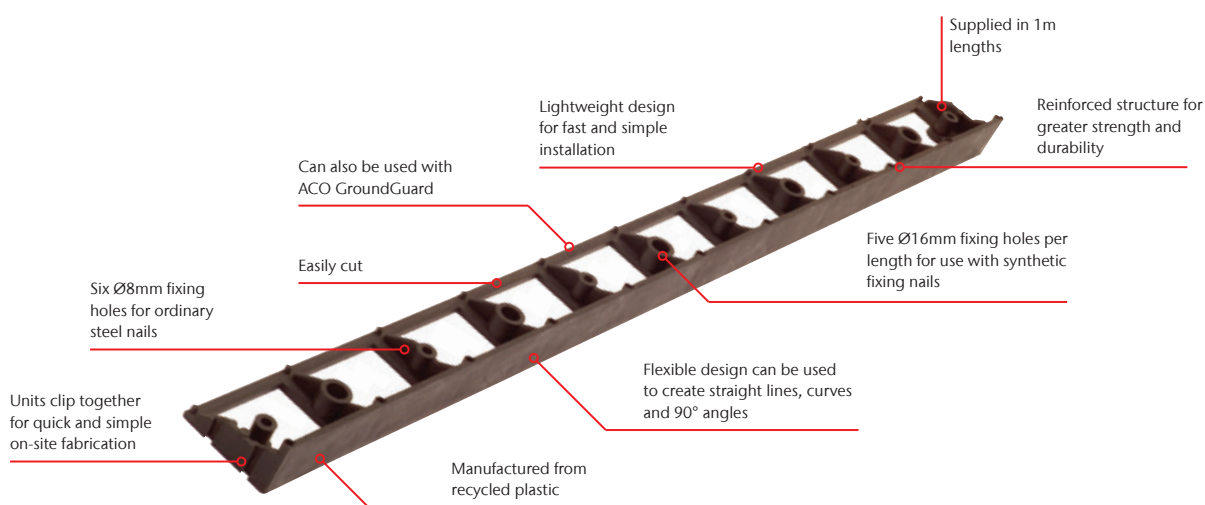
ACO BorderGuard



- Lightweight rapid paviour haunching system.
- Recycled plastic edging strip. For best results, use five synthetic or six steel nails per metre of ACO BorderGuard.
- Applications: Block paving, driveways and lawns



Features



Product Code	Description	Length [mm]	Width Overall [mm]	Depth Overall [mm]	Invert [mm]	Weight [kg]	Pack Quantity
ACO BorderGuard							
81100	BorderGuard unit	1000	80	45	-	0.40	200
81110	Synthetic fixing nails	250	14	-	-	0.10	20
81073	ACO 180mm steel nails (bag 50)	180	6	-	-	1.30	1

Synthetic fixing nail
Synthetic H-Section nails for
maximum stability
5 per metre



ACO 180mm steel nail Steel nail for use
with a compacted sub-base

6 per metre





ACO SuDS Overflow Gullies

- Accurate setting of overflow height.
- Restricts leaf and debris entry.
- Inconspicuous aesthetic.
- Quick and easy installation.



Features



Product Code	Description	Length [mm]	Width Overall [mm]	Depth Overall [mm]	Weight [kg]	Pack Quantity
ACO SuDS Overflow Gully						
25191	SuDS Overflow Gully ductile iron	250	250	200	10	1
310094	SuDS Overflow Gully black ABS plastic	200	200	126	1.5	1



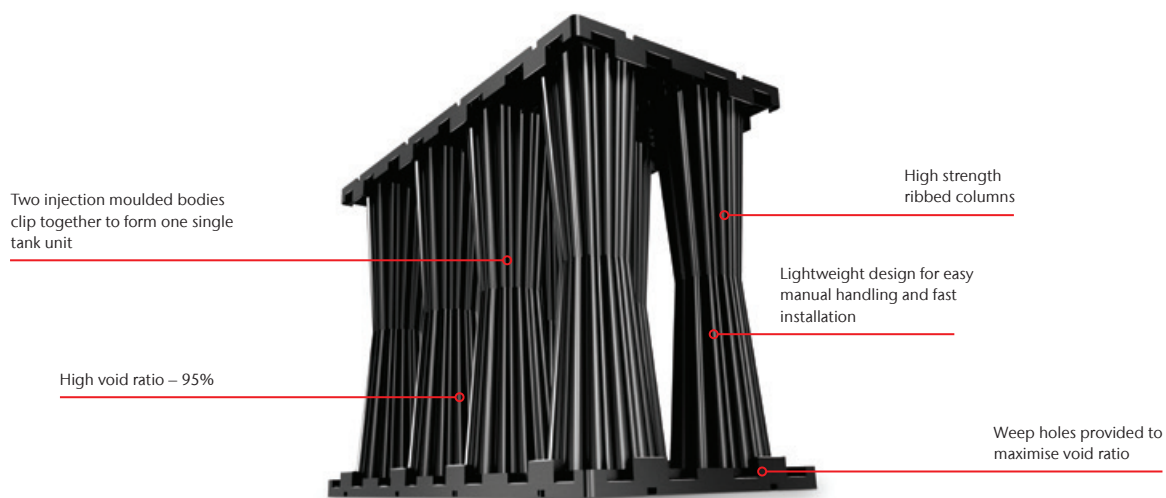
ACO StormBrixx SD



- ACO StormBrixx SD is a unique and patented plastic geocellular stormwater management system with compact stacking ability for easier logistics.
- Manufactured using recycled polypropylene, it benefits from a patented brick and cross bonding feature providing unparalleled stability to the strength of the structure.
- Applications: Driveways, patios, private and public parking, residential developments



Features



Product Code	Description	Length [mm]	Width Overall [mm]	Depth Overall [mm]	Weight [kg]	Pack Quantity
ACO StormBrixx SD						
314090	ACO StormBrixx half body	1200	600	494	9.41	16
314091	ACO StormBrixx side panel	580	592	104	3.13	100
314092	ACO StormBrixx top cover (set of 4)	550	550	45	0.76	144
ACO StormBrixx SD inlet/outlet pipe connectors						
27056	110mm pipe connector with flange	-	-	110	0.75	1
27057	160mm pipe connector with flange	-	-	160	1.25	1
27058	225mm pipe connector with flange	-	-	225	1.40	1
27059	300mm pipe connector with flange	-	-	300	1.75	1
314090	Layer connector	53.4	44.2	26.5	0.10	1



Side panel



Top covers



110mm / 160mm pipe connector

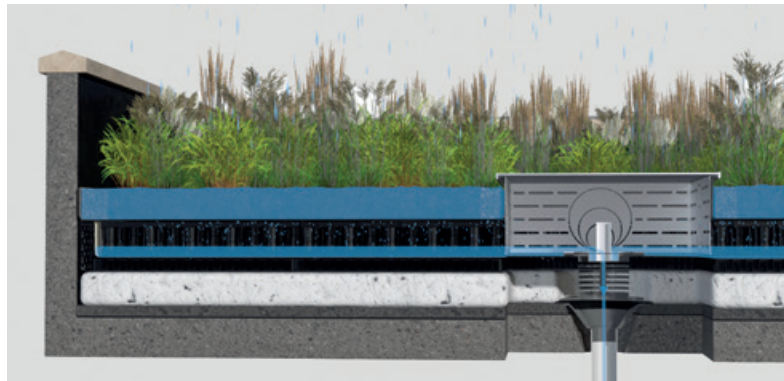


225mm / 300mm pipe connector



ACO RoofBloxx

- ACO RoofBloxx is a complete roof water attenuation system for blue and blue/green roofs.
- It enables you to create a drainage platform which gives architects the design flexibility required to create imaginative, multi-functional open green spaces at roof or podium level.



Features

Modular structure allows for design flexibility

90% void volume for maximum water discharge or storage

Nested packing for easy storage and delivery

Suitable for use beneath both permeable and impermeable surfaces. Stormwater attenuation at shallow depth

High loading bearing capacity in excess of 800 kN/m²

Interlocks in any orientation
Stackable without additional shear connectors

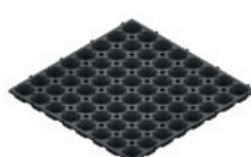
Product Code	Description	Length [mm]	Width Overall [mm]	Depth Overall [mm]	Weight [kg]	Pack Quantity
ACO RoofBloxx						
110000	RoofBloxx 50*	500	500	85	1.1	8
110001	RoofBloxx 85	500	500	85	2.2	4
110002	RoofBloxx 125	500	500	125	3.3	24
110003	RoofBloxx 165	500	500	165	4.4	2
110008	Drainage cell (30mm)	500	500	30	0.53	8
110009	Drainage flexicell (30mm)	500	500	30	0.5	16
110010	Reservoir tray (30 mm)	500	500	30	0.25	28
110007	Reservoir tray (60mm)	500	500	60	0.5	-
110005	Reservoir tray (60mm tray wall extender)	500	500	40	0.01	48
110004	Reservoir tray (60mm tray wall extender joiner)	500	500	40	0.1	1600
110006	Reservoir tray (150mm)	500	500	150	2.5	-



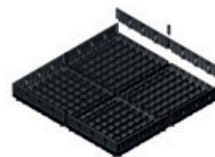
Drainage cell (30mm)



Drainage flexicell (30mm)



Reservoir tray (30mm)



Reservoir tray (60mm tray wall extender)



Reservoir tray (150mm)

* RoofBloxx 50 sheets used to make up Roofbloxx 85 (85mm tank), Roofbloxx 125 (125mm tank) and Roofbloxx 165 (165mm tank).

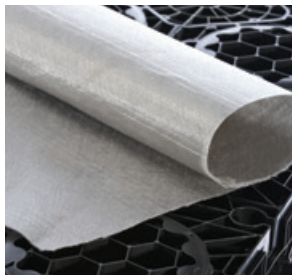
ACO RoofBloxx Accessories



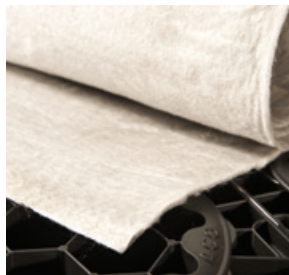
Product Code	Description	Length [m]	Width Overall [m]	Depth Overall [mm]	Weight [kg]	Pack Quantity
ACO RoofBloxx Accessories						
110011	Capillary wick Ø4mm	-	-	-	-	-
27038	ACOTex infiltration geotextile	100	4	1	51	1
27041	ACOTex infiltration geotextile	100	4	2.9	130	1
ACO Blue Roof Flow Restrictor						
BRFR1	Blue Roof 50/75 HP Restrictor Ø300mm	-	-	3	-	1
BRFR2	Blue Roof 100/150 HP Restrictor Ø380mm	-	-	3	-	1
BRFR3	Blue Roof 50/75 HP Overflow Ø300mm	-	-	3	-	1
BRFR4	Blue Roof 100/150 HP Overflow Ø380mm	-	-	3	-	1



Capillary wick



ACOTex infiltration geotextile



ACOTex infiltration geotextile



Blue roof flow restrictor

ACO GroundBloxx

- ACO GroundBloxx is a flexible shallow drain attenuation system for underground drainage applications that is easy to install, maintain and inspect.
- It enables engineers to create an attenuation system to prevent flooding and water pollution as part of a SUDs solution.
- ACO GroundBloxx makes possible the creation of a system that can be configured to enable the cleansing of storm water runoff of pollutants. It can also be incorporated as part of a tree planting system.



ACO Rainwater Outlets



- High performance rainwater outlets.
- Manufactured from marine grade aluminium alloy and powder coated for high corrosion resistance. 304 Stainless Steel fixings are used to ensure long service durability and reliability.
- Applications: Flat roofs, low-pitched roofs, balconies and roof terraces

These products are from our ACO Building Drainage range, please contact them on Tel: 01462 810400.



ACO HP Vertical Spigot Outlet



ACO HP Two-way Outlet



ACO HP 45° and 90° Outlets



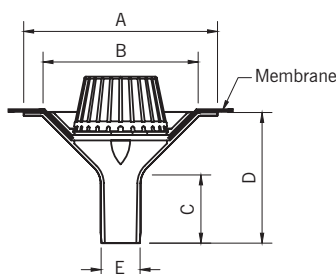
ACO HP Vertical Screw Outlet



ACO HP Balcony Spigot Outlet

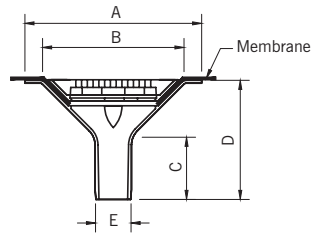


ACO HP Refurbishment Outlet

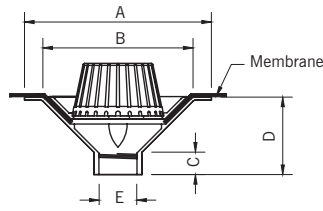


Product Code	Nominal Bore Pipe Size	Area Drained	Flow Rate	A	B	C	D	E	Weight	Pack Quantity
	[mm]	[m ²]	[l/s]	[mm]	[mm]	[mm]	[mm]	[mm]	[kg]	
105900	50	82	1.7	300	260	105	200	60	2.50	1
105901	75	240	5	300	260	110	200	83	2.40	1
105902	100	514	10.7	380	310	130	240	110	3.10	1
105903	150	725	15.1	380	310	160	240	160	3.60	1

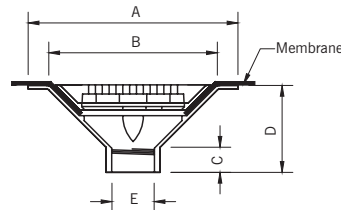
HP Vertical Spigot Outlet - Dome Grate



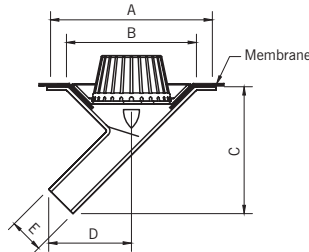
Product Code	Nominal Bore Pipe Size [mm]	Area Drained [m ²]	Flow Rate [l/s]	A [mm]	B [mm]	C [mm]	D [mm]	E [mm]	Weight [kg]	Pack Quantity
HP Vertical Spigot Outlet - Flat Grate										
105904	50	82	1.7	300	260	105	200	60	2.80	1
105905	75	240	5	300	260	110	200	83	2.70	1
105906	100	514	10.7	380	310	130	240	110	3.80	1
105907	150	787	16.4	380	310	160	240	160	4.20	1



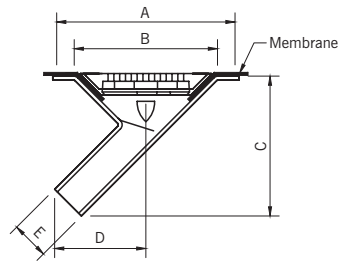
Product Code	Nominal Bore Pipe Size [mm]	Area Drained [m ²]	Flow Rate [l/s]	A [mm]	B [mm]	C [mm]	D [mm]	E [mm]	Weight [kg]	Pack Quantity
HP Vertical Screw Outlet - Dome Grate										
105908	50	82	1.7	300	260	45	130	2" BSP	2.20	1
105909	75	240	5	300	260	45	130	3" BSP	2.30	1
105910	100	514	10.7	380	310	45	130	4" BSP	3.00	1
105911	150	730	15.2	380	310	45	130	6" BSP	3.10	1



Product Code	Nominal Bore Pipe Size [mm]	Area Drained [m ²]	Flow Rate [l/s]	A [mm]	B [mm]	C [mm]	D [mm]	E [mm]	Weight [kg]	Pack Quantity
HP Vertical Screw Outlet - Flat Grate										
105912	50	82	1.7	300	260	45	130	2" BSP	2.50	1
105913	75	240	5	300	260	45	130	3" BSP	2.50	1
105914	100	514	10.7	380	310	45	130	4" BSP	3.70	1
105915	150	736	15.9	380	310	45	130	6" BSP	3.80	1



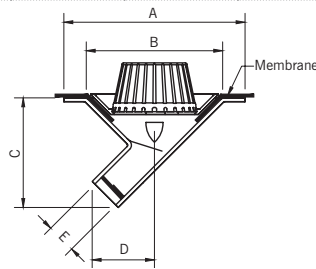
Product Code	Nominal Bore Pipe Size [mm]	Area Drained [m ²]	Flow Rate [l/s]	A [mm]	B [mm]	C [mm]	D [mm]	E [mm]	Weight [kg]	Pack Quantity
HP 45° Spigot Outlet - Dome Grate										
105916	50	82	1.7	300	260	245	135	60	2.90	1
105917	75	240	5	300	260	260	160	83	3.50	1
105918	100	422	8.8	380	310	275	200	110	5.00	1



Product Code	Nominal Bore Pipe Size	Area Drained	Flow Rate	A	B	C	D	E	Weight	Pack Quantity
	[mm]	[m ²]	[l/s]	[mm]	[mm]	[mm]	[mm]	[mm]	[kg]	

HP 45° Spigot Outlet - Flat Grate

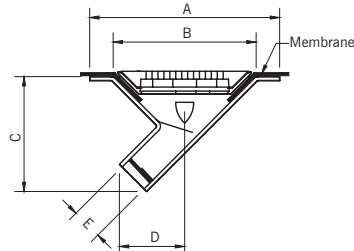
105919	50	82	1.7	300	260	245	135	60	3.60	1
105920	75	240	5	300	260	260	160	83	4.00	1
105921	100	494	10.3	380	310	275	200	110	6.20	1



Product Code	Nominal Bore Pipe Size	Area Drained	Flow Rate	A	B	C	D	E	Weight	Pack Quantity
	[mm]	[m ²]	[l/s]	[mm]	[mm]	[mm]	[mm]	[mm]	[kg]	

HP 45° Screw Outlet - Dome Grate

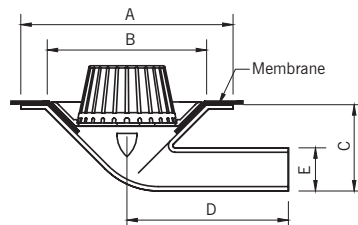
105922	50	82	1.7	300	260	190	80	2" BSP	3.10	1
105923	75	240	5	300	260	200	120	3" BSP	2.60	1
105924	100	418	8.7	380	310	210	145	4" BSP	4.40	1



Product Code	Nominal Bore Pipe Size	Area Drained	Flow Rate	A	B	C	D	E	Weight	Pack Quantity
	[mm]	[m ²]	[l/s]	[mm]	[mm]	[mm]	[mm]	[mm]	[kg]	

HP 45° Screw Outlet - Flat Grate

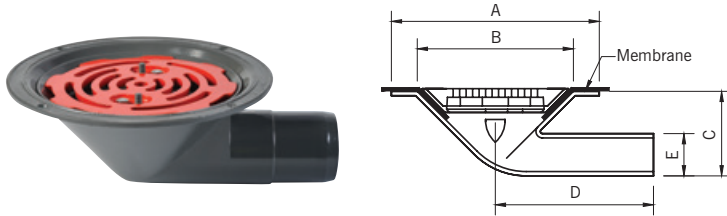
105925	50	82	1.7	300	260	190	80	2" BSP	3.50	1
105926	75	240	5	300	260	200	120	3" BSP	3.60	1
105927	100	485	8.7	380	310	210	145	4" BSP	5.10	1



Product Code	Nominal Bore Pipe Size	Area Drained	Flow Rate	A	B	C	D	E	Weight	Pack Quantity
	[mm]	[m ²]	[l/s]	[mm]	[mm]	[mm]	[mm]	[mm]	[kg]	

HP 90° Spigot Outlet - Dome Grate

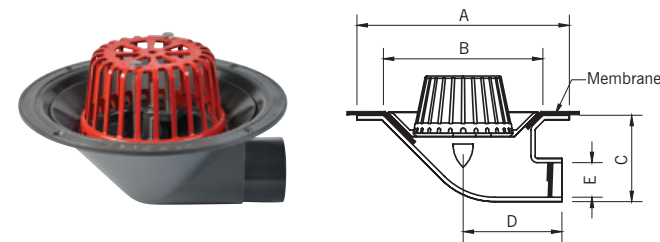
105928	50	82	1.7	300	260	130	230	60	3.00	1
105929	75	240	5	300	260	130	230	83	3.00	1
105930	100	346	7.2	380	310	160	290	110	5.10	1



Product Code	Nominal Bore Pipe Size [mm]	Area Drained [m ²]	Flow Rate [l/s]	A [mm]	B [mm]	C [mm]	D [mm]	E [mm]	Weight [kg]	Pack Quantity
--------------	-----------------------------	--------------------------------	-----------------	--------	--------	--------	--------	--------	-------------	---------------

HP 90° Spigot Outlet - Flat Grate

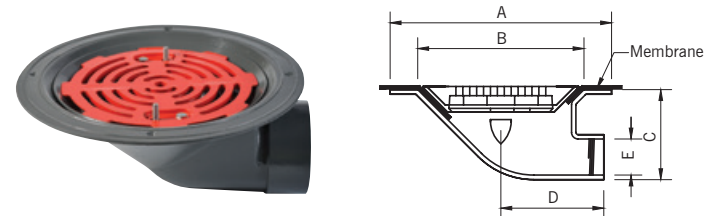
105931	50	82	1.7	300	260	130	230	63	3.30	1
105932	75	192	4	300	260	130	230	83	3.40	1
105933	100	398	8.3	380	310	160	290	110	6.00	1



Product Code	Nominal Bore Pipe Size [mm]	Area Drained [m ²]	Flow Rate [l/s]	A [mm]	B [mm]	C [mm]	D [mm]	E [mm]	Weight [kg]	Pack Quantity
--------------	-----------------------------	--------------------------------	-----------------	--------	--------	--------	--------	--------	-------------	---------------

HP 90° Screw Outlet - Dome Grate

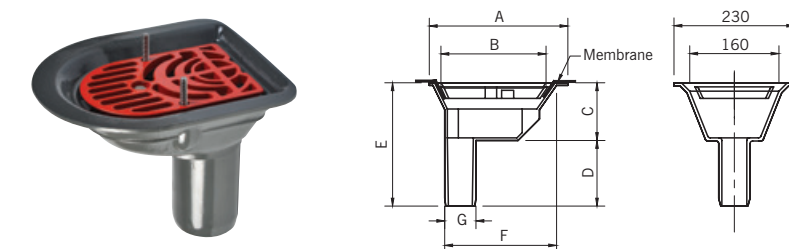
105934	50	82	1.7	300	260	130	160	2" BSP	2.90	1
105935	75	182	3.8	300	260	130	160	3" BSP	2.90	1
105936	100	341	7.1	380	310	170	190	4" BSP	4.70	1
105937	150	507	10.6	380	310	215	140	6" BSP	4.90	1



Product Code	Nominal Bore Pipe Size [mm]	Area Drained [m ²]	Flow Rate [l/s]	A [mm]	B [mm]	C [mm]	D [mm]	E [mm]	Weight [kg]	Pack Quantity
--------------	-----------------------------	--------------------------------	-----------------	--------	--------	--------	--------	--------	-------------	---------------

HP 90° Screw Outlet - Flat Grate

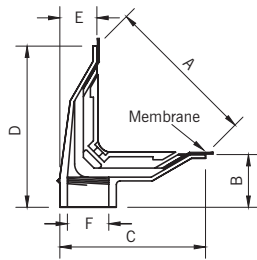
105938	50	82	1.7	300	260	130	160	2" BSP	3.30	1
105939	75	197	4.1	300	260	130	160	3" BSP	3.20	1
105940	100	389	8.1	380	310	170	190	4" BSP	5.50	1
105941	150	624	13	380	310	215	140	6" BSP	5.00	1



Product Code	Nominal Bore Pipe Size [mm]	Area Drained [m ²]	Flow Rate [l/s]	A [mm]	B [mm]	C [mm]	D [mm]	E [mm]	F [mm]	G [mm]	Weight [kg]	Pack Quantity
--------------	-----------------------------	--------------------------------	-----------------	--------	--------	--------	--------	--------	--------	--------	-------------	---------------

HP Balcony Spigot Outlet - Flat Grate

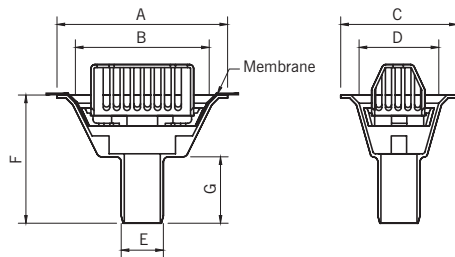
105942	50	82	1.7	265	205	90	125	215	210	60	2.60	1
105943	75	240	5	265	205	90	125	215	210	83	2.60	1
105944	100	345	7.6	265	205	90	125	215	210	110	2.80	1



Product Code	Nominal Bore Pipe Size [mm]	Area Drained [m ²]	Flow Rate Horizontal [l/s]	Flow Rate Vertical [l/s]	A [mm]	B [mm]	C [mm]	D [mm]	E [mm]	F [mm]	Weight [kg]	Pack Quantity
--------------	-----------------------------	--------------------------------	----------------------------	--------------------------	--------	--------	--------	--------	--------	--------	-------------	---------------

HP Two-Way Screw Outlet - Flat Grate

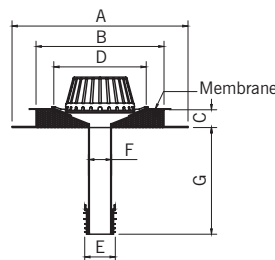
105945	50	82	1.7	1.7	202	70	193	213	50	2" BSP	2.10	1
105946	75	197	2	4.1	202	70	193	213	50	3" BSP	2.20	1
105947	100	374	2.4	7.8	202	70	193	213	50	4" BSP	2.20	1



Product Code	Nominal Bore Pipe Size [mm]	Area Drained [m ²]	Flow Rate [l/s]	A [mm]	B [mm]	C [mm]	D [mm]	E [mm]	F [mm]	G [mm]	Weight [kg]	Pack Quantity
--------------	-----------------------------	--------------------------------	-----------------	--------	--------	--------	--------	--------	--------	--------	-------------	---------------

HP Gully Spigot Outlet - Dome Grate

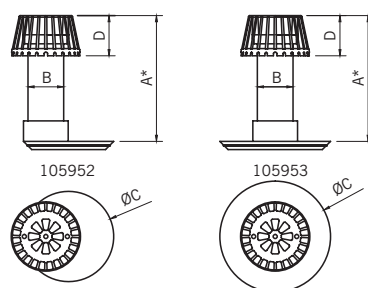
105948	75	240	5	345	260	240	160	80	230	125	3.10	1
105949	100	514	10.7	345	260	240	160	110	230	125	3.40	1



Product Code	Nominal Bore Pipe Size [mm]	Area Drained [m ²]	Flow Rate [l/s]	A [mm]	B [mm]	C [mm]	D [mm]	E [mm]	F [mm]	G [mm]	Weight [kg]	Pack Quantity
--------------	-----------------------------	--------------------------------	-----------------	--------	--------	--------	--------	--------	--------	--------	-------------	---------------

HP Refurbishment Outlet - Dome Grate

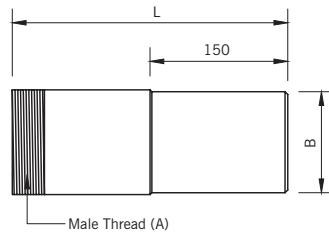
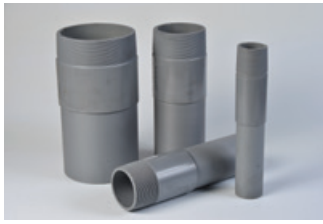
105950	75	240	5	494	354	50	236	89	64	285	7.70	1
105951	100	240	5	494	354	50	236	114	89	285	8.20	1



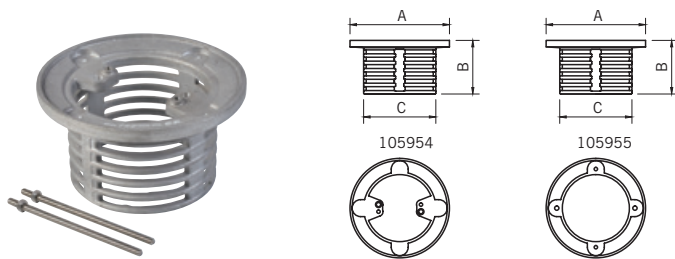
Product Code	Nominal Bore Pipe Size [mm]	Area Drained [m ²]	Flow Rate [l/s]	A [mm]	B [mm]	C [mm]	D [mm]	Weight [kg]	Pack Quantity
--------------	-----------------------------	--------------------------------	-----------------	--------	--------	--------	--------	-------------	---------------

HP Overflow Outlet Module - Dome Grate

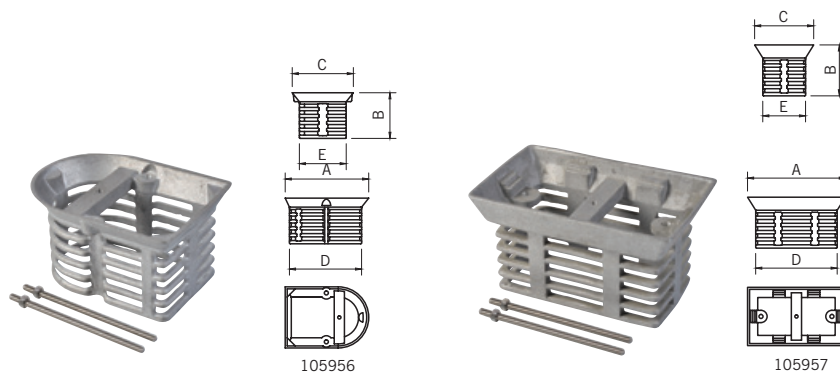
105952	50	-	2.4	310	90	215	95	2.20	1
105953	75	-	2.4	310	90	273	95	2.70	1



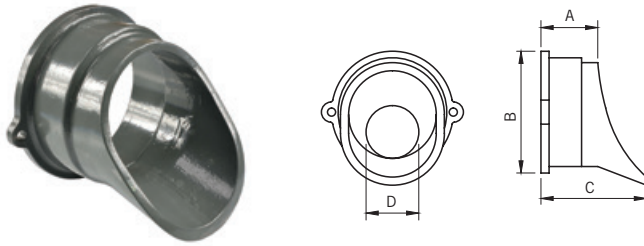
Product Code	Male Thread A [BSP]	Spigot Dia B [mm]	Length L [mm]	Weight [kg]	Pack Quantity
ABS Threaded Adaptors - For Use With HP Screw Outlets					
105958	2"	55	300	0.30	1
105959	3"	83	300	0.60	1
105960	4"	110	300	1.00	1
105961	6"	160	300	1.60	1



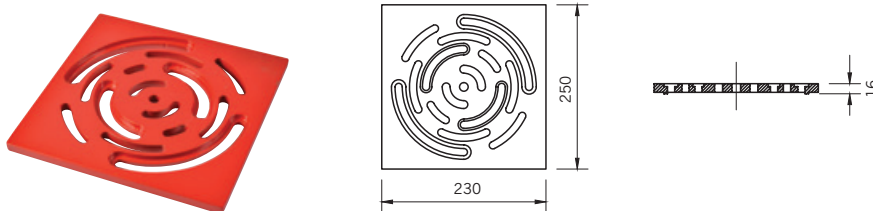
Product Code	Suitable for use with	A [mm]	B [mm]	C [mm]	Weight [kg]	Pack Quantity
Raising Rings for Circular Outlets						
105954	105900, 105901, 105904, 105905, 105908, 105909, 105912, 105913, 105916, 105917, 105919, 105920, 105922, 105923, 105925, 105926, 105928, 105929, 105931, 105932, 105934, 105935, 105938, 105939	230	125	170	1.50	1
105955	105954, 105902, 105903, 105906, 105907, 105910, 105911, 105914, 105915, 105918, 105921, 105924, 105927, 105930, 105933, 105936, 105937, 105940, 105941	230	125	170	1.40	1



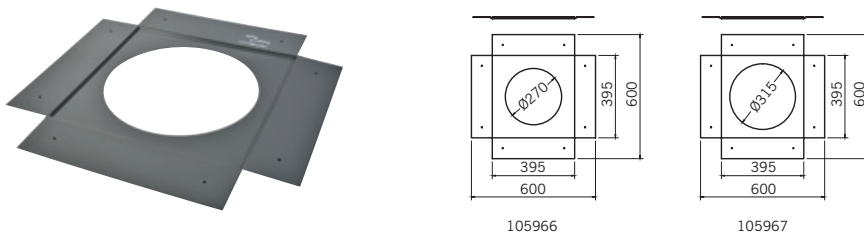
Product Code	Suitable for use with	A [mm]	B [mm]	C [mm]	D [mm]	E [mm]	Weight [kg]	Pack Quantity
Raising Rings for Balcony and Gully Outlets								
105956	105942, 105943, 105944	207	117	150	177	115	0.80	1
105957	105948, 105949	240	125	145	200	105	1.60	1



Product Code	A	B	C	D	Weight	Pack Quantity
	[mm]	[mm]	[mm]	[mm]	[kg]	
Discharge Spouts						
105962	75	150	135	64	1.20	1
105963	75	150	135	92	1.10	1
105964	75	150	135	118	0.90	1



Product Code	Description	Length	Width Overall	Depth Overall	Weight	Pack Quantity
		[mm]	[mm]	[mm]	[kg]	
Terrace Grate for Circular Outlet Raising Rings						
105965	105954 and 105955 Raising Rings	230	230	16	1.30	1



Product Code	Suitable for use with	Weight	Pack Quantity
		[kg]	
Deck Supports for Circular Outlets			
105966	105900, 105901, 105908, 105909, 105916, 105917, 105922, 105923, 105928, 105929, 105934, 105935	2.20	1
105967	105902, 105903, 105910, 105911, 105918, 105924, 105930, 105936, 105937	2.50	1

ACO Junior®



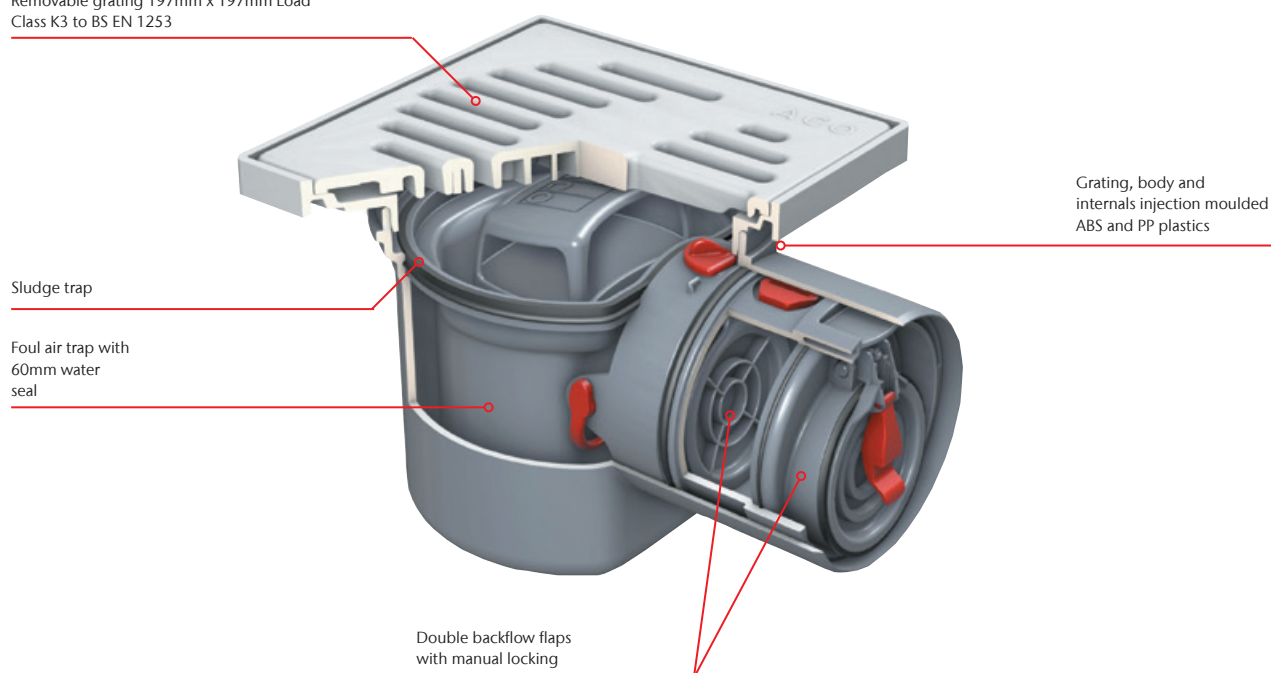
- Backflow floor drain for flood protection.
- Type 5 anti-flooding device for grey water applications and conforms to BS EN 13564. Compact Construction makes this backflow gully ideal for new build or refurbishment projects.
- Applications: Utility rooms and basements

This product is from our ACO Building Drainage range, please contact them on Tel: 01462 810400.



Features

Removable grating 197mm x 197mm Load Class K3 to BS EN 1253



Product Code	Description	Outlet Dia	Weight	Pack Quantity
		[mm]	[kg]	
ACO Junior® Assembly				
105602	Junior floor drain with plastic grating	110	1.50	1
105603	Back inlet option (Multifit)	50	0.30	1
105607	Seals maintenance kit	-	0.20	1
105440	Replacement Quadrato Grate S/S 304	-	1.46	1

ACO Triplex®

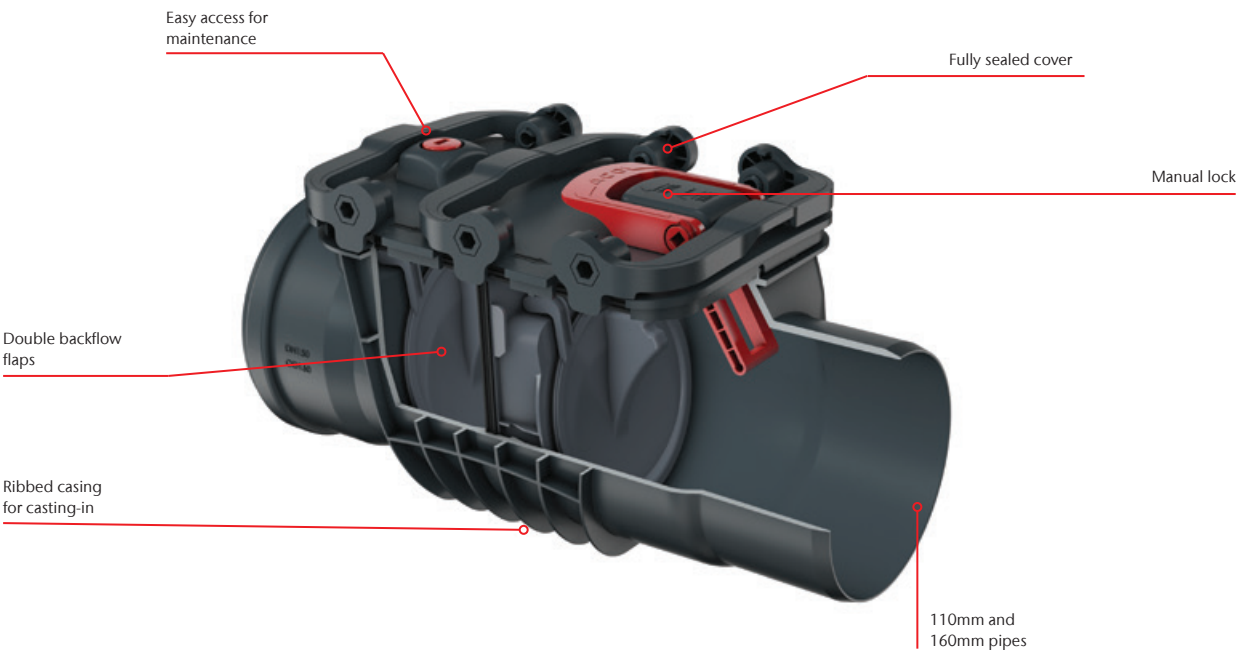


- Backflow valve for flood protection.
- Type 2 passive anti-flooding device for grey water applications and conforms to BS EN 13564. The Triplex unit is suitable for in-line pipe assembly.
- Applications: Utility rooms and basements

This product is from our ACO Building Drainage range, please contact them on Tel: 01462 810400.



Features



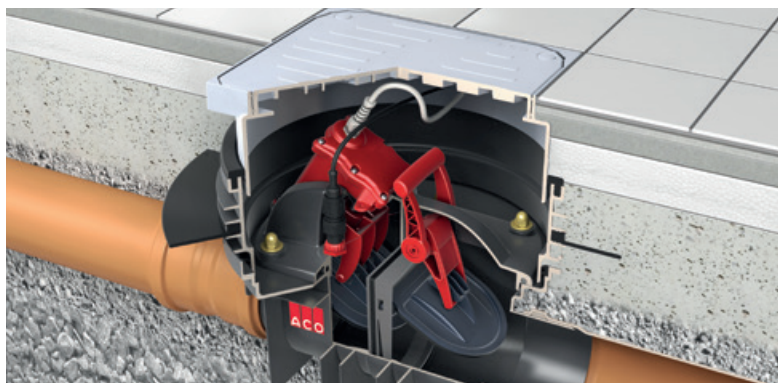
Product Code	Description	Outlet Dia [mm]	Weight [kg]	Pack Quantity
ACO Triplex® Assembly				
107000	Triplex-K-S plain 110mm	110	5.00	1
107001	Triplex-K-S plain 160mm	160	5.00	1

ACO Quatrix®

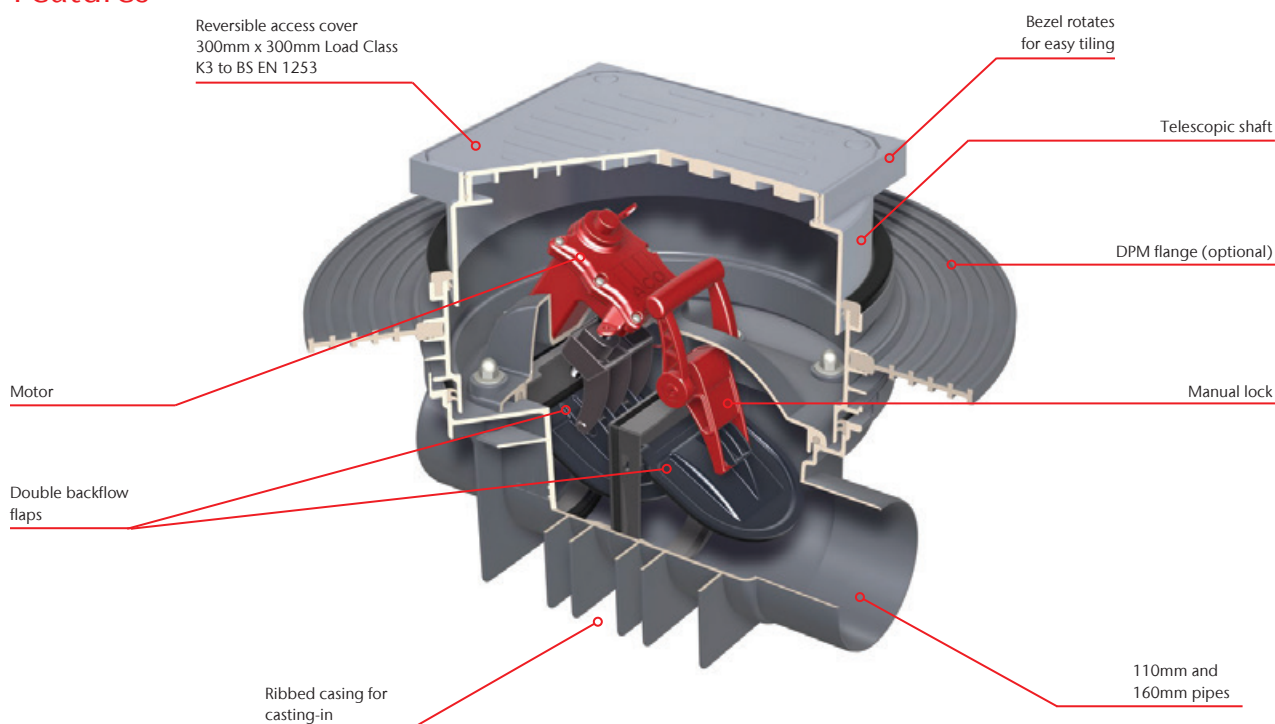


- Backflow valve for flood protection.
- Type 3 automated anti-flooding device for black and grey water applications and conforms to BS EN 1 3564. The Quatrix unit is available with or without access chamber.*
- Applications: Utility rooms and basements

This product is from our ACO Building Drainage range, please contact them on Tel: 01462 810400.



Features



Product Code	Description	Outlet Dia [mm]	Weight [kg]	Pack Quantity
ACO Quatrix® Assembly				
620368	Quatrix-K automatic plain 110mm*	110	9.20	1
620369	Quatrix-K automatic plain 160mm*	160	9.20	1
620370	Quatrix-K with access chamber and cover 110mm**	110	15.40	1
620371	Quatrix-K with access chamber and cover 160mm**	160	15.40	1
620381	100mm Chamber extension piece	110/160	2.40	1
620510	Sealing Flange	110/160	1.98	1

* 620368 and 620369 options are suitable for in site built access chamber and wall mounted applications.

** 620370 and 620371 options are complete with access chamber and are not suitable for wall mounted applications.

ACO ShowerDrain C Line

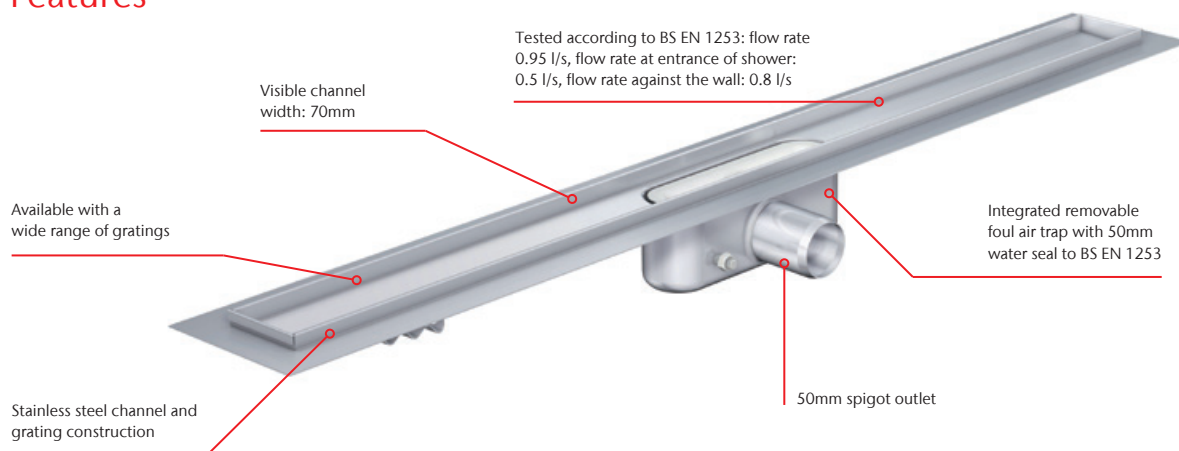


- High quality stainless steel shower system with integrated 0.5-0.8 l/s* foul air trap with 50mm water seal to BS EN 1253.
- 50mm spigot outlet. Available with a wide range gratings.
- Applications: Wetrooms

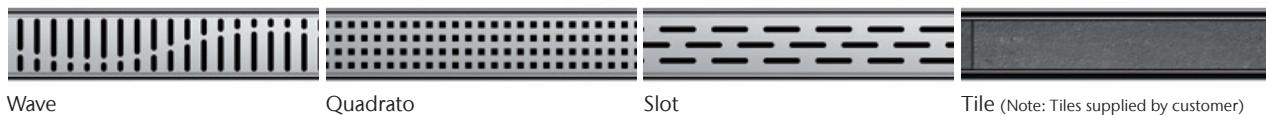
These products are from our ACO Building Drainage range, please contact them on Tel: 01462 810400.



Features



Designer Gratings



Product Code	Description	Length	Width Overall	Depth Overall	Weight	Pack Quantity
		[mm]	[mm]	[mm]	[kg]	
ACO ShowerDrain C Line Channel with Wave Grating						
404485	ACO ShowerDrain C Line channel with Wave grating	685	-	92	2.63	1
404486		785	-	92	2.93	1
404487		885	-	92	3.23	1
404488		985	-	92	3.53	1
404490		1185	-	92	4.13	1
ACO ShowerDrain C Line Channel with Quadrato Grating						
404493	ACO ShowerDrain C Line channel with Quadrato grating	685	-	92	2.63	1
404494		785	-	92	2.93	1
404495		885	-	92	3.23	1
404496		985	-	92	3.53	1
404498		1185	-	92	4.13	1



Product Code	Description	Length [mm]	Width Overall [mm]	Depth Overall [mm]	Weight [kg]	Pack Quantity
ACO ShowerDrain C Line Channel with Slot Grating						
403799	ACO ShowerDrain C Line channel with Slot grating	685	-	92	2.63	1
403800		785	-	92	2.93	1
403801		885	-	92	3.23	1
403802		985	-	92	3.53	1
403804		1185	-	92	4.13	1
ACO ShowerDrain C Line Channel with Tile Grating						
408652	ACO ShowerDrain C Line channel with Tile grating	685	-	92	3.53	1
408653		785	-	92	4.25	1
408654		885	-	92	4.48	1
408655		985	-	92	4.70	1
408657		1185	-	92	5.49	1
ACO ShowerDrain C Line Accessories						
91092	2" Multifit straight connector	-	-	-	0.01	1
91094	2" Multifit 90 degree bend	-	-	-	0.01	1
90561	Replacement screws	-	-	-	0.005	1
NM3562	Replacement lifting tool	-	-	-	0.05	1

* Please add 61mm to visible length of channel to allow for bonding flange. e.g. 885mm + 61mm = 946mm

ACO Shower Gullies

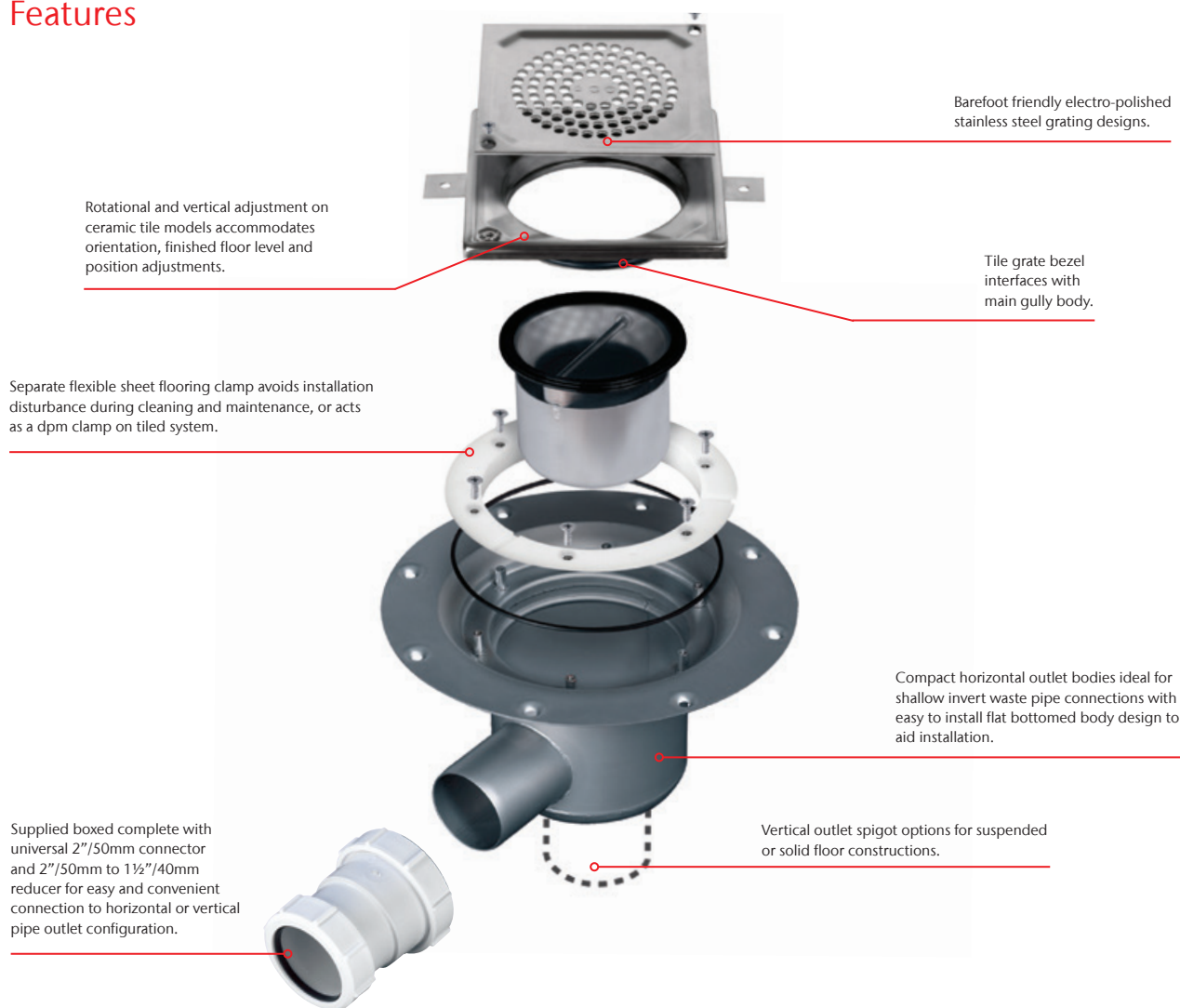


- Gully system for resin and cementitious tiled flooring.
- Integrated 1.2 l/s foul air trap with 50mm water seal to BS EN 1253. Wide range of Stainless Steel gratings available.
- Applications: Wetrooms

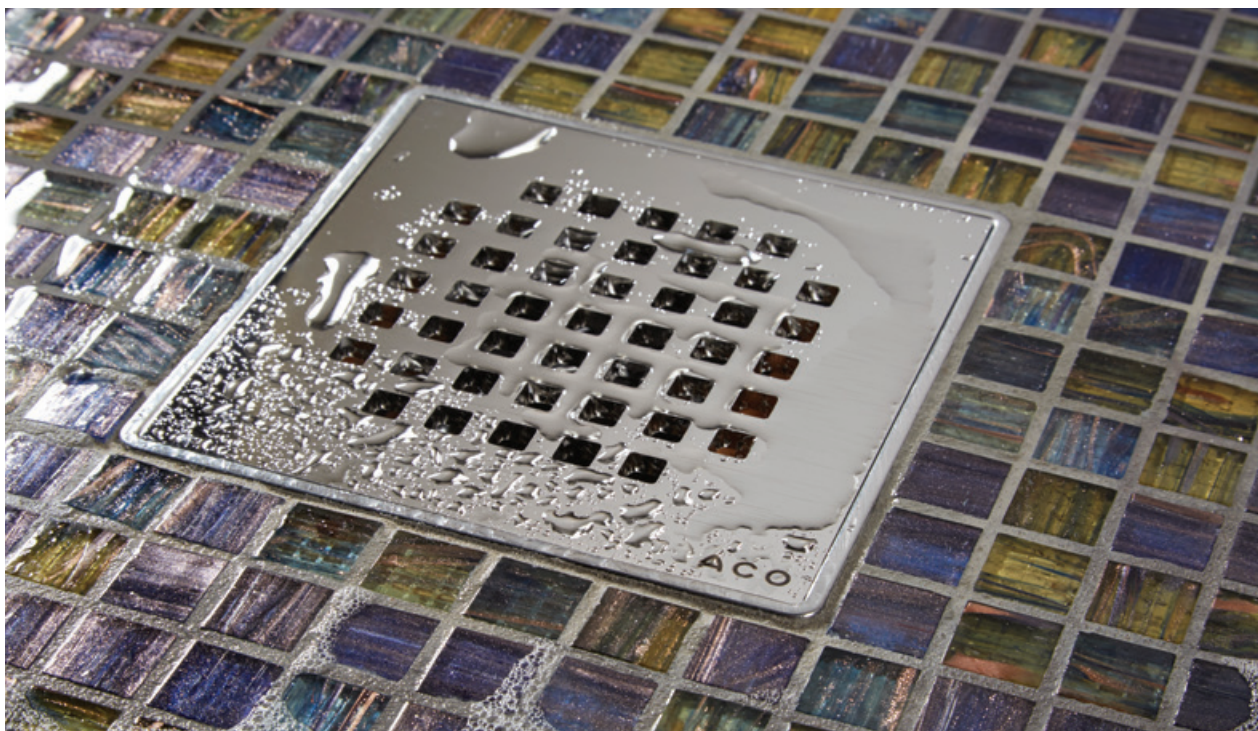
These products are from our ACO Building Drainage range, please contact them on Tel: 01462 810400.



Features



Product Code	Description	Flow Rate [l/s]	Weight [kg]	Pack Quantity
Step 1 – Select gully body				
405821	50mm ADJ Horizontal Outlet	1.2	1.30	1
405817	50mm ADJ Vertical Outlet	1.2	2.10	1
405854	110mm TELE Vertical Outlet	1.2	1.00	1
402725	Grating Bezel Extension	-	0.30	1



Quadrato



Wave



Mondo



Wellness



Classic



Arco

Perforated
SquareTextured
Square

Product Code	Description	Weight [kg]	Pack Quantity
Step 2 – Select grating			
104039	Quadrato	0.30	1
104040	Wave	0.30	1
104041	Mondo	0.30	1
104043	Wellness	0.30	1
104044	Classic	0.30	1
104045	Arco	0.30	1
401183	Perforated Square	0.30	1
104047	Textured Slip Resistant Square	0.30	1

Product Code	Description	Weight [kg]	Pack Quantity
Step 3 – Select accessories			
91092	2" Multifit straight connector	0.01	1
91094	2" Multifit 90° bend	0.01	1
91093	2"/1.5" Multifit reducer	0.01	1

Product Code	Description	Weight [kg]	Pack Quantity
Or select complete kit			
402595	50mm ADJ horizontal outlet gully with perforated grating and multifit connector, reducer and 90° bend	2.80	1

ACO Bat Box

- Designed to provide a sheltered roost for bats.
- The box is three standard brick courses high and half a brick course in width, so is easy to build in to a wall during construction. Alternatively the box may be retrospectively built in, by cutting out a suitable area.
- The front panel is removable for inspection and cleaning. This should only be done by a suitably licensed person when it is clear that the box is not being used.

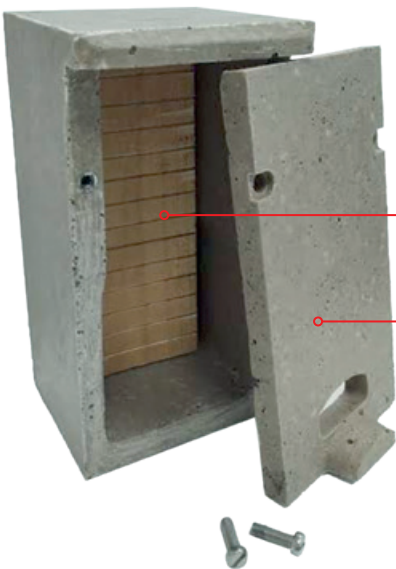


Features

Weathershield top lip prevents rain running into the box from above

Half-brick width, three courses high

Small platform at the base for bats to use when leaving or arriving



A wooden insert is fitted to the inside back face providing a suitable gripping surface

Removable front panel

Product Code	Description	Length [mm]	Width Overall [mm]	Depth Overall [mm]	Invert [mm]	Weight [kg]	Pack Quantity
ACO Bat Box							
18890	Bat box assembly	108	108	215	n/a	2.8	-

ACO Nest Box

- Shelter for birds that can be built into new or existing walls.
- Designed to provide a sheltered nesting refuge for small birds, specifically blue tits.
- The box is three standard brick courses high and half a brick course in width, so is easy to build in to a wall during construction. Alternatively the box may be retrospectively built in, by cutting out a suitable area, or it can be fixed to the face of an existing wall.



Features

Weathershield protruding top lip prevents rain running into the box from above

28mm access hole - Optimised for small birds such as blue tits

Long operational life

Two drainage holes at the bottom of the front plate

Top front plate is completely removable for inspection and cleaning. This should only be done when it is clear that the box is not in use

Polymer concrete construction

Easily built into standard walls

Product Code	Description	Length [mm]	Width Overall [mm]	Depth Overall [mm]	Invert [mm]	Weight [kg]	Pack Quantity
ACO Nest Box							
7487	Nest box assembly natural 28mm dia hole	108	108	215	n/a	2.7	-

ACO Wildlife Refuges

- Designed to provide shelter and sanctuary for various types of small animal.
- Different opening types and sizes prevent predators from gaining access while allowing smaller animals to move to safety.
- A completely open base, ensures that natural ground humidity is retained wherever they are installed.



Features

No metal reinforcement
- Animals are not disoriented by distortion of magnetic fields

Manufactured from Vienite, ACO's recycled polymer concrete material

Can be integrated into a variety of habitats

Refuges will not heat up excessively and are recyclable at end of working life

Promotes colonisation

Long operational life will not corrode or deteriorate with age

Will not desiccate or burn animals' skin

Can be concealed by a wide range of materials

Provide shelter and protection from predators for various types of animal

Product Code	Description	Length [mm]	Width Overall [mm]	Depth Overall [mm]	Invert [mm]	Weight [kg]	Pack Quantity
ACO Wildlife Refuges							
18891	Wildlife multi-use refuge Type 1	650	650	120	Open arch	21	-
18892	Wildlife multi-use refuge Type 2	650	650	120	60 x 10 slot	21	-
18893	Wildlife multi-use refuge Type 3	650	650	120	60 x 15 slot	21	-
18894	Wildlife multi-use refuge Type 4	650	650	120	ø30 semicircle	21	-
18895	Wildlife multi-use refuge Type 5	650	650	120	ø70 semicircle	21	-

Type 1 suitable for many types of small animal including hedgehogs.

Types 2 and 3 with slotted entrances are suited to newts, lizards, and invertebrates

Type 4 is intended for insects

Type 5 for snakes, lizards, mice, voles, and shrews.

ACO 'Point of Sale' Material

ACO 'Point of Sale' units are FREE of charge when ordered with stock. To receive your FREE 'Point of Sale' ensure product codes are detailed on stock orders.

Product Code	Description	Width Overall [mm]	Height Overall [mm]	Depth Overall [mm]	Lead Time
Merchandise frame					
40650	Pallet merchandise frame	1130	1894	600	3-4 weeks
40655	Bus stop holder for pallet frame	148	210	-	



Examples of an ACO merchandiser.

ACO 5 tier display stand.
Stand shown with products for illustration purposes only.
All products sold separately. Weight shown in chart is stand weight without products.

Product Code	Description	Length [mm]	Width Overall [mm]	Height Overall [mm]	Weight [kg]	Lead Time
5 tier display stand						
40640	Product display unit	1000	500	1550	25	3-4 weeks
40646	Bus stop holder for product display unit	-	148	210	-	3-4 weeks

Product Code	Description	Thickness [mm]	Width Overall [mm]	Depth Overall [mm]	Lead Time
--------------	-------------	-------------------	-----------------------	-----------------------	-----------

Talker card pack

40635	Talker card - ACO CivicDrain®	3	200	100	3-4 weeks
	Talker card - ACO HexDrain®	3	200	100	3-4 weeks
	Talker card - ACO HexDrain® Brickslot	3	200	100	3-4 weeks
	Talker card - ACO HexDrain® Pro	3	200	100	3-4 weeks
	Talker card - ACO RainDrain®	3	200	100	3-4 weeks
	Talker card - ACO RainDrain® Brickslot B 125	3	200	100	3-4 weeks
	Talker card - ACO RainDrain® B 125	3	200	100	3-4 weeks
	Talker card - ACO Threshold Drain	3	200	100	3-4 weeks

Bus Stop (optional)

40628	Bus stop - ACO RainDrain® B 125 corner units	3	148	200	3-4 weeks
40629	Bus Stop - ACO RainDrain® corner units	3	148	200	3-4 weeks
40630	Bus Stop - ACO RainDrain® Brickslot B 125 corner units	3	148	200	3-4 weeks
40631	Bus Stop - ACO Complete the Look	3	148	200	3-4 weeks
40632	Bus Stop - ACO HexDrain® Galvanised Corner Unit	3	148	200	3-4 weeks

Product Code	Description	Length [mm]	Width Overall [mm]	Lead Time
ACO stockist banner				
04298	ACO stockist banner	1800	600	3-4 weeks

Product Code	Description	Thickness [mm]	Width Overall [mm]	Depth Overall [mm]	Lead Time
Merchandise header boards					
40240	Header board - ACO CivicDrain®	3	1135	355	3-4 weeks
40241	Header board - ACO HexDrain® Brickslot	3	1135	355	3-4 weeks
40242	Header board - ACO HexDrain®	3	1135	355	3-4 weeks
40243	Header board - ACO HexDrain® B 125	3	1135	355	3-4 weeks
40244	Header board - ACO HexDrain® Pro	3	1135	355	3-4 weeks
40245	Header board - ACO RainDrain®	3	1135	355	3-4 weeks
40246	Header board - ACO RainDrain® B 125	3	1135	355	3-4 weeks
40247	Header board - ACO RainDrain® Brickslot B 125	3	1135	355	3-4 weeks
40248	Header board - ACO Threshold Drain	3	1135	355	3-4 weeks

Accessory boards

40618	Accessory board - ACO CivicDrain®	3	1135	150	3-4 weeks
40619	Accessory board - ACO HexDrain® Brickslot	3	1135	150	3-4 weeks
40620	Accessory board - ACO HexDrain®	3	1135	150	3-4 weeks
40621	Accessory board - ACO HexDrain® B 125	3	1135	150	3-4 weeks
40622	Accessory board - ACO HexDrain® Pro	3	1135	150	3-4 weeks
40623	Accessory board - ACO RainDrain®	3	1135	150	3-4 weeks
40624	Accessory board - ACO RainDrain® B 125	3	1135	150	3-4 weeks
40625	Accessory Board - ACO RainDrain® Brickslot	3	1135	150	3-4 weeks
40626	Accessory Board - ACO Threshold Drain	3	1135	150	3-4 weeks



ACO merchandise header boards

ACO stockist banner

Product Code	Description	Thickness [mm]	Length [mm]	Width Overall [mm]	Depth Overall [mm]	Lead Time
Complete the Look POS						
04301	Complete the Look display board	3	620	500	-	3-4 weeks
04255	Complete the Look grating display	-	1500	710	390	3-4 weeks



'Complete the Look' grating display



'Complete the Look' display board

Product Code	Description	Width Overall [mm]	Height Overall [mm]	Depth Overall [mm]	Lead Time
Pallet wrap					
04253	GroundGuard pallet wrap	1000	1000	1200	3-4 weeks



ACO GroundGuard merchandiser wrap.
Stand shown for illustration purposes only.
All products sold separately.

ACO Building + Landscape (House & Garden) support material

ACO has a range of support materials designed to help with the specification, design or installation of ACO's product ranges.

ACO website

On the ACO website you'll find – ACO stockist locator, product downloads, product videos, tips and installation details. To learn more please visit our website www.aco.co.uk/house-and-garden

ACO House & Garden literature

A full range of brochures are available to support ACO products. To request copies of any of our ACO House & Garden literature please contact our Marketing Department on **01462 816666** or email marketing@aco.co.uk. All our brochures are also available to download from our website www.aco.co.uk



Merchant online support

We have a full catalogue of content that can help support your online activity with ACO. If you would like product images, descriptions, videos, visualiser tool to support your ACO listings, please contact marketing@aco.co.uk. We also have merchant training which you can see here: www.aco.co.uk/merchant-zone

Get social with ACO House & Garden

LinkedIn: www.linkedin.com/company/aco-house-garden-uk
 Twitter: twitter.com/ACO_HouseGarden
 Pinterest: www.pinterest.co.uk/ACOHouseAndGarden
 Instagram: www.instagram.com/aco.co.uk
 Facebook: www.facebook.com/ACO.uk
 YouTube: www.youtube.com/c/AcoUk

Vienite®

For the 2012 London Olympics, ACO engineers sought to improve the environmental impact of key ACO products being used in the Olympic park. ACO rose to the challenge and successfully developed Vienite® in time for the construction of the Olympic site.



In the UK, polymer concrete channels are now manufactured from Vienite, a recycled material:

- Vienite® is a new polymeric based recycled material that contains post consumer waste previously destined for landfill in the UK.
- Vienite® is a highly durable material that meets all the high performance flexural and compressive strength characteristics to ensure ACO KerbDrain® and ACO Road Drain® meet all the requirements of BS EN 1433:2002 and the BSI Kitemark.
- Vienite® is recyclable, ie. it can be collected, processed and returned for re-use as raw material.



ACO TECHNOLOGIES PLC CONDITIONS OF SALE

1. INTRODUCTION

These conditions shall form part of every contract of sale entered into by ACO Technologies plc ("the Company") to the exclusion of all other terms and conditions including any which the Customer may purport to impose. They may not be varied except in writing signed by an officer of the Company. No contract comes into force until the Company, having received the Customer's purchase order, issues a written acceptance to the Customer pursuant to these Conditions of Sale.

2. DEFINITIONS AND INTERPRETATION

- (a) **"Customer"** means the person, firm or company buying or agreeing to buy the Goods and/or Services from the Company.
- "Contract"** means the contract for supply of Goods and/or Services and comprises the Company's written acknowledgement of the Customer's order, those parts of any design or instruction given by the Customer which have been expressly accepted by the Company in writing (if applicable), the Scheduled Sales Order Agreement (if applicable), the Terms and Conditions of Scheduled Order Agreement (if applicable), the proposal document for bespoke stainless steel design work (if applicable) and these Conditions of Sale.
- "Goods"** means any goods agreed in the Contract to be supplied to the Customer by the Company (including any part or parts of them).
- "Input Material"** means any documents, plans or other materials or specifications and any data or other information provided by the Customer in whatever format relating to the Goods and/or Services.
- "Output Material"** means any documents, plans or other materials or specifications and any data or other information provided by the Company in whatever format relating to the Goods and/or Services.
- "Services"** means (if applicable) any delivery, design, manufacture, advice or installation services provided by the Company or its sub-contractors.
- (b) The headings in these Terms and Conditions are for convenience only and shall not affect their construction.
- (c) References to any statute or statutory provision shall, unless the context otherwise requires, be construed as a reference to that statute or statutory provision as from time to time amended, consolidated, modified, extended, re-enacted or replaced.

3. VALIDITY AND ACCEPTANCE

- (a) Unless previously withdrawn, the Company's quotation is open for acceptance for the period stated, or if no period is stated, 30 days. All orders (including those not based upon a quotation) must be in writing or by email and are subject to the Company's acceptance in writing. The Customer must ensure that the terms of its order and any applicable Input Material are complete and accurate.
- (b) Any representations or warranties made or given by the Company or anyone on the Company's behalf prior to the Company's acceptance of an order and not contained in the Company's written quotation are hereby expressly excluded.
- (c) All quotations are made subject to availability of the Goods or materials on receipt of the order.

4. SPECIFICATIONS

- (a) All descriptive and shipping specifications, estimates, drawings and particulars of weights and dimensions supplied by the Company are approximate only and the descriptions and illustrations contained in its catalogues, price lists and other marketing materials are intended merely to present a general idea of the goods described therein, unless otherwise stated.
- ACO reserves the right to change its marketing materials from time to time without notice to the Customer.
- (b) The Company may correct any typographical or other errors or omissions in any marketing materials, quotation, written acknowledgement of the Customer's order, or other document relating to the provision of the Goods and/or Services without any liability to the Customer.
- (c) Any advice or recommendation given by the Company or its employees or agents to the Customer or its employees or agents as to the storage, application or use of the Goods and/or Services which is not confirmed in writing by the Company is followed or acted upon entirely at the Customer's own risk, and accordingly the Company shall not be liable for any such advice or recommendation which is not so confirmed.

5. SERVICES

- (a) Where the Company has undertaken to provide any Services to the Customer, the Company shall provide the Services subject to these Conditions. Any changes or additions to the Services must be agreed in writing by the Company and the Customer may be charged extra.
- (b) The Customer shall at its own expense supply the Company with all necessary documents, plans or other materials, and all necessary data or other information relating to the Services, within sufficient time to enable the Company to provide the Services in accordance with the Contract. The Customer shall ensure the accuracy of all Input Material.
- (c) The Customer shall at its own expense retain duplicate copies of all Input Material and insure against its accidental loss or damage. The Company shall have no liability for any such loss or damage, however caused. All Output Material shall be at the sole risk of the Customer from the time of delivery to or to the order of the Customer.
- (d) The Services shall be provided using reasonable care and skill and as far as reasonably possible in accordance with the Output Material, subject to these Conditions.
- (e) The Company may at any time without notifying the Customer make any changes to the Services and Goods which are necessary to comply with any applicable safety or other statutory requirements, or which do not materially affect the nature or quality of the Services and Goods.
- (f) The property and any copyright or other intellectual property rights in:
- (i) any Input Material shall belong to the Customer;
- (ii) any Output Material shall, unless otherwise agreed in writing between the Customer and the Company, belong to the Company, subject only to the right of the Customer to use the Output Material for the purposes of utilising the Services and/or Goods.
- (g) The Customer warrants that any Input Material and its use by the Company for the purpose of providing the Services and/or Goods will not infringe the copyright or other rights of any third party, and the Customer shall indemnify the Company against any loss, damages, costs, expenses or other claims arising from any such infringement.
- (h) The Company warrants that any Output Material and its use by the Customer for the purposes of utilising the Services and/or Goods will not infringe the copyright or other rights of any third party, and the Company shall indemnify the Customer against any loss, damages, costs, expenses or other claims arising from any such infringement.
- (i) Where the Company supplies in connection with the provision of the Services, any Goods (including Output Material) supplied by a third party, the Company does not give any warranty, guarantee or other term as to their quality, fitness for purpose or otherwise, but shall, where possible, assign to the Customer the benefit of any warranty, guarantee or indemnity given by the person supplying the Goods to the Company.
- (j) The Company shall have no liability to the Customer for any loss, damage, costs, expenses or other claims for compensation arising from any Input Material or instructions supplied by the Customer which are incomplete, incorrect, inaccurate, illegible, out of sequence or in the wrong form, or arising from their late arrival or non arrival, or any other fault of the Customer.
- (k) The Customer shall provide the Company or its sub-contractors or agents full and proper access to the Customer's site for the Company or its sub-contractors or agents to perform the Services and shall not hinder said performance in any way.

6. SUBSTITUTION

In the event of a shortage of raw materials or component parts specified in the contract for use in the production of Goods the Company shall be entitled to substitute such other materials as it shall consider reasonably fit for such purpose.

7. PRICES

- (a) Except where agreed in writing to the contrary, all prices quoted by the Company exclude carriage from the warehouse which shall be charged in addition.
- (b) All prices are subject to revision at any time (including after the Company has acknowledged the Customer's order) in the event of any increase in cost caused by circumstances beyond the Company's control and the Company reserves the right to charge such revised prices for Goods and/or Services affected by the increase and remaining to be delivered.
- (c) The Customer shall be liable for extra charges required as a result of its instructions, lack of instructions, the inaccuracy of any Input Material or any other cause attributable to the Customer.

8. PAYMENT

- (a) Unless otherwise agreed in writing, prices quoted are net of tax, which shall be payable in addition and:
- (i) payment for Goods and/or Services within the United Kingdom shall be made on the last day of the month following the month in which the Company's invoice is dated. Time for payment shall be of the essence.
- (ii) payment for Goods and/or Services outside the United Kingdom shall be made by irrevocable letter of credit deposited with a London Bank approved by the Company upon presentation of shipping documents or if the Company is unable by reason of the Customer's instructions or lack of instructions to ship Goods when ready, upon notification to the Customer that the Goods are ready for shipment.
- (b) In the event of any delay in payment the Company shall be entitled to charge interest at 4% over Bank of England minimum lending rate from time to time, accruing on a daily basis until payment is made, whether before or after any judgment. During any such period of default and at any time when the Company shall have reasonable grounds for doubting that payment will be made on the due date the Company shall be entitled to withhold deliveries on all contracts with the Customer without prejudice to its right to payment for Goods and Services delivered and for work undertaken and expenses incurred in connection with undelivered Goods and/or Services which shall become immediately due and payable on demand.
- (c) The Buyer shall make all payments due under the Contract without any deduction whether by way of set-off, counterclaim, discount, abatement or otherwise.

9. TERMINATION AND CANCELLATION

- (a) Either party may (without limiting any other remedy) at any time terminate the Contract by giving written notice to the other if the other commits any material breach of these Conditions and (if capable of remedy) fails to remedy the breach within 30 days after being required by written notice to do so, or if the other goes into liquidation, or (in the case of an individual or firm) becomes bankrupt, makes a voluntary arrangement with his or its creditors or has a receiver or administrator appointed.
- (b) No order for Goods or Services which has been accepted by the Company may be cancelled by the Customer except with the agreement in writing of the Company and on terms that the Customer shall indemnify the Company in full against all loss (including loss of profit), costs (including the cost of all labour and materials used), damages, charges and expenses incurred by the Seller as a result of cancellation.

10. DELIVERY DATES

Delivery dates are estimated only and not guaranteed and are not of the essence. The Company will endeavour to meet the Customer's delivery requirements but shall not be liable for any loss or damage whether direct, indirect, consequential or otherwise (all of which terms include, without limitation, loss of profits, loss of business, depletion of goodwill and like loss) caused by the delay in delivery. Any liability of the Company for non-delivery of the Goods and/or Services shall be limited to replacing the Goods and/or Services within a reasonable time or issuing a credit note at the pro-rata Contract rate against any invoice raised for such Goods and/or Services.

11. TITLE

The Company shall retain title to Goods until payment is made in full in cleared funds in respect of all Contracts. This provision shall not prevent the Customer from selling the Goods for full consideration or embodying them in any construction or apparatus in the normal course of business but in such event (to the extent of its indebtedness to the Company in respect of Goods) it shall act as trustee for the Company of the proceeds of sale or contract price and shall at the Company's request assign the right to receive the same to the Company. The Company's failure to enforce such rights in any case shall not affect its rights in any other case. Without prejudice to the above, until payment is made in full the Customer shall store the Goods (at no cost to the Company) separately from all other goods of the Customer or any third party in such a way that they remain readily identifiable as the Company's property and the Customer grants the Company and its agents an irrevocable licence at any time to enter any premises where the Goods are or may be stored in order to inspect them, or, where the Customer's right to possession has terminated, to recover them.

12. RISK

Risk in the Goods shall pass to the Customer on delivery or immediately prior to off-loading from the delivery vehicle where the Customer undertakes the off-loading or immediately after loading a Customer's vehicle at our premises. If the Customer fails to take delivery or has not provided appropriate instructions, documents or authorisations, risk will pass when delivery is tendered.

13. DELIVERY

- (a) The Company may deliver the Goods and/or Services to the Customer's premises or may agree to deliver the Goods and/or Services direct to the site of any third party.
- (b) Upon the Company notifying the Customer that the Goods are ready for collection or tendering delivery of the Goods the Customer shall agree to accept delivery of the Goods forthwith. If the Company has agreed to deliver the Goods and the Customer shall fail to give proper delivery instructions or to accept delivery as aforesaid it shall be liable for all costs incurred by the Company as a result of such failure (including without limitation storage and insurance) which shall become immediately due and payable on demand but such liability shall not affect its obligation to purchase the Goods or the right of the Company to damages for breach of such obligation.
- (c) Where the Goods and/or Services are to be delivered in installments, each delivery shall constitute a separate contract and failure by the Company to deliver any one or more of the installments in accordance with these Conditions or any claim by the Customer in respect of any one or more installments shall not entitle the Customer to treat the Contract as a whole as repudiated.

14. DAMAGE TO GOODS IN TRANSIT

- (a) The Company shall have no liability in respect of Goods lost or damaged in transit unless the Customer or its agent notes such loss or damage on the delivery receipt and gives notice thereof in writing to the Company and the carrier within three days of delivery or such shorter period as may be required by the carrier's conditions of carriage or in the case of a whole consignment failing to arrive gives notice thereof in writing to the Company within three days of receipt of the Company's invoice or despatch note.
- (b) The Company's liability in respect of Goods lost or damaged in transit shall be limited to repairing or replacing such Goods.

15. GUARANTEE

- (a) All Goods sold by the Company shall be of satisfactory quality but shall not be sold as fit for any particular purpose unless the Customer shall have informed the Company in writing that it is relying upon the Company's skill and judgment and the Company shall have accepted such stipulation in writing.
- (b) The Company will repair or replace any of the Goods or parts thereof in respect of which any defects arise solely from faulty materials or workmanship or (subject to Clause 6 (Substitution) above) from the Company's failure to supply Goods of the quality or specification ordered provided that such defects are notified to the Company in writing within three months of the date of delivery provided as follows:
 - (i) that in the case of defects which would have been apparent to the Customer on reasonable examination of the Goods on delivery the Customer shall notify the Company of the defects in writing within three days of the date of delivery.
 - (ii) that in the case of any other defects the Customer shall notify the Company of the defects in writing within three days of the date when the defects become apparent and
 - (iii) in respect of 15. (b) (i) and (ii) above, that the defective Goods are promptly returned carriage paid.
- (c) Except insofar as any statute provides to the contrary the undertakings contained in the preceding paragraphs of this Clause are given in lieu of and to the exclusion of all conditions, warranties and representations whether express or implied by statute or otherwise as to the quality of the Goods or their fitness for any particular purpose or otherwise and the Company shall have no liability in respect of the Goods and/or Services save as provided in paragraph (b) of this Clause.

16. LIMITATION OF LIABILITY

- (a) Except as expressly provided in these Conditions, the Company shall not be liable to the Customer by reason of any representation, or any implied warranty, condition or other term, or any duty at common law, or under the express terms of the Contract, for any loss of profit or any indirect, special or consequential loss, damage, costs, expenses or other claims (whether caused by the negligence of the Company, its servants or agents or otherwise) which arise out of or in connection with the provision of the Goods and/or Services or their use by the Customer, and the entire liability of the Company under or in connection with the Contract shall not exceed the amount of the Company's charges for the provision of the Goods and/or Services, except as expressly provided in these Conditions of Sale.
- (b) Nothing in these Conditions of Sale will exclude or limit the Company's liability for death or personal injury caused by its negligence or for fraudulent misrepresentation.

17. INDEMNITY

Except insofar as any statute provides to the contrary, the Company shall not be responsible for any loss or damage suffered by any third party caused directly or indirectly by the Goods and/or Services whether as a result of their operation or use or otherwise and whether as a result of any defect therein or otherwise and the Customer shall indemnify the Company from any claim arising from any such loss or damage.

18. THIRD PARTIES

- (a) Where the Customer is selling on the Goods to others it agrees to pass to those others full and accurate information supplied by the Company concerning the Goods, including without limitation product information, specification, advice as to usage and details of all exclusions and limitations.
- (b) The parties do not intend that any term of the Contract will be enforceable by virtue of the Contracts (Rights of Third Parties) Act 1999 by any person that is not a party to it.

19. FORCE MAJEURE

The Company will not be liable for any loss or damage sustained by the Customer by reason of act of God, war, riot, fire, strike, lock-out, governmental control or regulation, abnormal weather conditions, accident, breakdown or any other circumstances beyond the Company's control.

20. GENERAL

- (a) The contract shall be governed by English law and the English courts shall have non-exclusive jurisdiction to determine any dispute between the parties in connection with this Contract.
- (b) The Contract constitutes the entire agreement between the parties, supersedes any previous agreement or understanding and may not be varied except as stated herein. All other terms and conditions, express or implied by statute or otherwise, are excluded to the fullest extent permitted by law.
- (c) Any notice required or permitted to be given by either party to the other under these Conditions shall be in writing addressed to the other party at its registered office or principal place of business or such other address as may at the relevant time have been notified pursuant to this provision to the party giving the notice.
- (d) The Customer shall not be entitled to assign the Contract or any part of it without the prior written consent of the Company.
- (e) The Company may at any time assign, transfer, charge, mortgage, subcontract, declare a trust of or deal in any other manner with all or any of its obligations under the Contract to any third party or agent.
- (f) No failure or delay by either party in exercising any of its rights under the Contract shall be deemed to be a waiver of that right, and no waiver by either party of any breach of the Contract by the other shall be considered as a waiver of any subsequent breach of the same or any other provision.
- (g) If any provision of these Conditions is held by any competent authority to be invalid or unenforceable in whole or in part, the validity of the other provisions of these Conditions and the remainder of the provision in question shall not be affected.

Notes:



Handwriting practice lines consisting of 20 horizontal dotted lines.



-
- ACO Access
 - ACO Building Drainage
 - ACO Water Management
 - Civils + Infrastructure
 - Building + Landscape
 - ACO Sport
 - ACO Wildlife
-

ACO Water Management

A division of ACO Technologies plc
ACO Business Park
Hitchin Road
Shefford
Bedfordshire
SG17 5TE

Tel: 01462 816666
Sales: customersupport@aco.co.uk
Project pricing: awmprojects@aco.co.uk
Technical: technical@aco.co.uk

www.aco.co.uk



View this
brochure online

